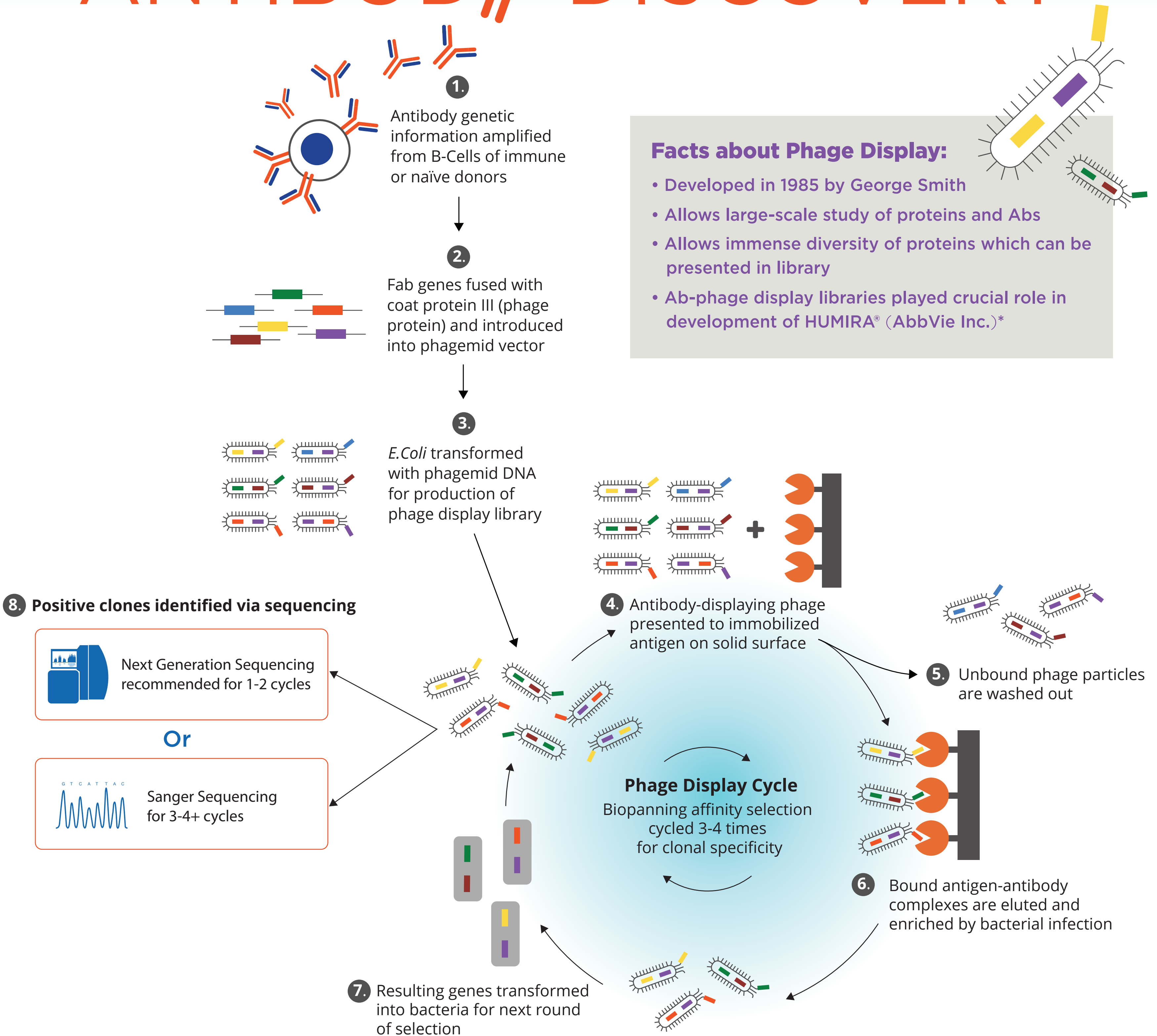


PHAGE DISPLAY FOR ANTIBODY DISCOVERY



Facts about Phage Display:

- Developed in 1985 by George Smith
- Allows large-scale study of proteins and Abs
- Allows immense diversity of proteins which can be presented in library
- Ab-phage display libraries played crucial role in development of HUMIRA® (AbbVie Inc.)*

*Lerner, R.A. Combinatorial antibody libraries: new advances, new immunological insights. *Nature Reviews Immunology* 16, 498–508 (2016).