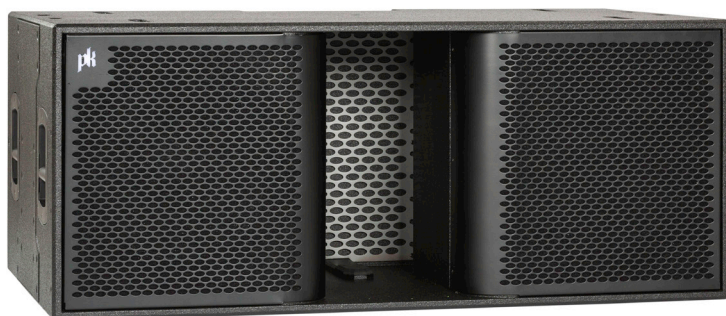


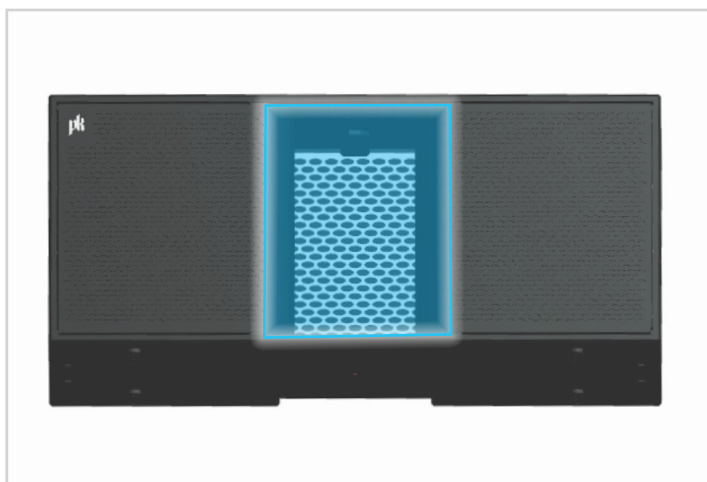
GRAVITY 218 SUBWOOFER



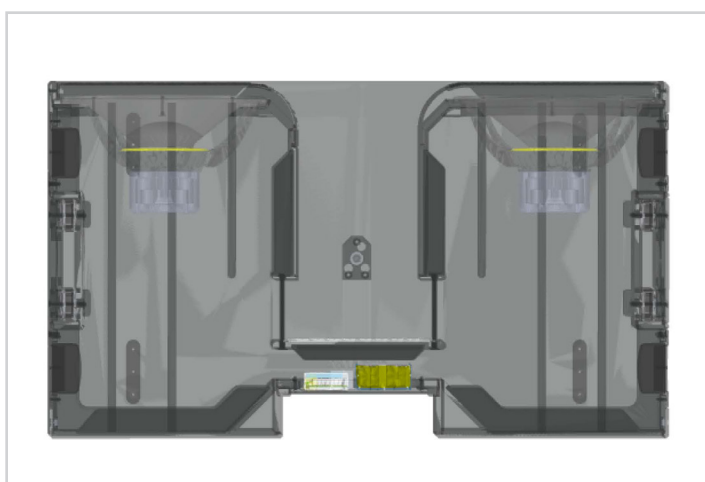
The Gravity 218 is a high-output, low-frequency subwoofer. Utilizing Integrated Powered Adaptive Loudspeaker (IPAL) technology to achieve exceptional tonality and low distortion. This space efficient low frequency module dramatically increases output per cubic volume compared to traditional dual 18" loudspeakers. The unrestricted vent ensures non-turbulent streamlined airflow, eliminating port noise and increasing output. An 8,000-watt class-D amplifier provides efficient high output power to two high-excursion 18" transducers.

The Gravity 218 is cardioid arrayable, providing the maximum amount of flexibility when creating large subwoofer arrays, especially when a high amount of directionality is required. The subwoofer is available in both touring and installation versions. Both models integrate seamlessly with PK's Kontrol™ software, enabling remote access to key DSP features and real-time monitoring. Automatic-Array detection utilizes the module's built-in IR sensors to quickly map the cabinet positions in Kontrol™ for a quick and seamless setup of subwoofer arrays. The touring model incorporates an integrated rigging assembly, allowing up to 12 cabinets to be suspended when coupled with custom flybar.

FEATURES



Vents optimized for minimal turbulence, increasing SPL and reducing distortion.



High output - compact bass reflex design.

GRAVITY 218 SUBWOOFER



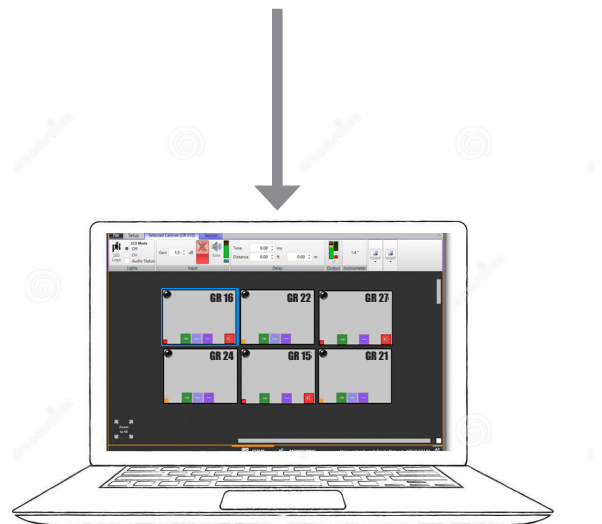
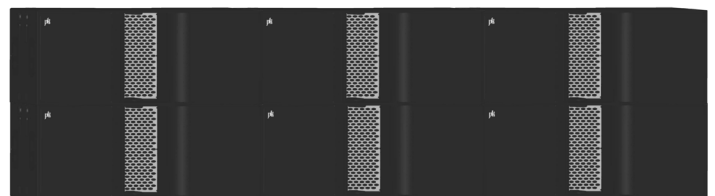
SPECIFICATIONS

PURPOSE	SUBWOOFER
Transducers	2 x 18" IPAL
Amplifier	8,000W class-D
Operating frequency	25Hz – 90Hz
Maximum SPL (1)	145.1dB
Audio input	Balanced XLR / 14 pin Amphenol
Transducer protection	Thermal & excursion limiting
Amplifier cooling	Temperature controlled fan
DSP pre-sets	1. 90Hz LP 2. Cardioid
AC power input	Powercon TRUE1 IP65
Input voltage	Auto-switching 100 - 250V
AC power consumption	920W
Current avg 120V/208V	7.6A / 3.8A
Maximum cabinets per 20A circuit 120V/208V	2 @ 120V / 4 @ 208V
Construction	High-grade void-free Baltic birch
Finish	Tour-grade high-impact EXL Polyurea
Grill	10 gauge steel
Dimensions (WxHxD)	54.8 x 22.6 x 21.5 (1395 x 575 x 800mm)
Weight	120kg / 264lb
Weight w/rigging	130kg / 286lb
Max cabinets suspended	12

(1) measured with pink noise crest factor 10 at 1m

AUTO ARRAY

The Gravity 218 sets up quick and easily. Auto-Array automatically arranges cabinets using IR sensors located in each loudspeaker. Kontrol™ software recognizes the cabinets and creates an exact virtual representation of the real world arrangement. This allows users to effortlessly set up large arrays and easily apply processing for low frequency control and array compensation.

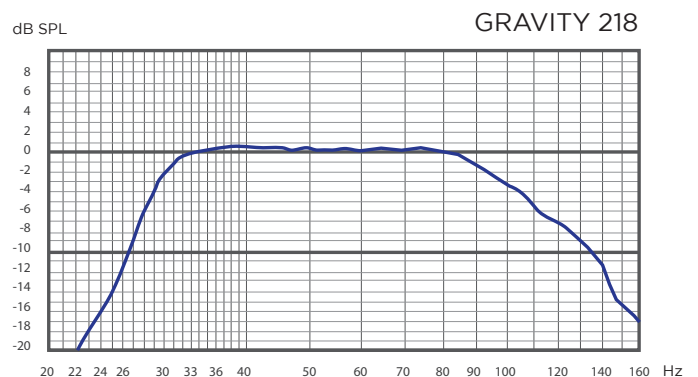


LOCAL CONTROL



Local LCD control panel allows for quick and easy adjustments to be made right from the module.

FREQUENCY RESPONSE

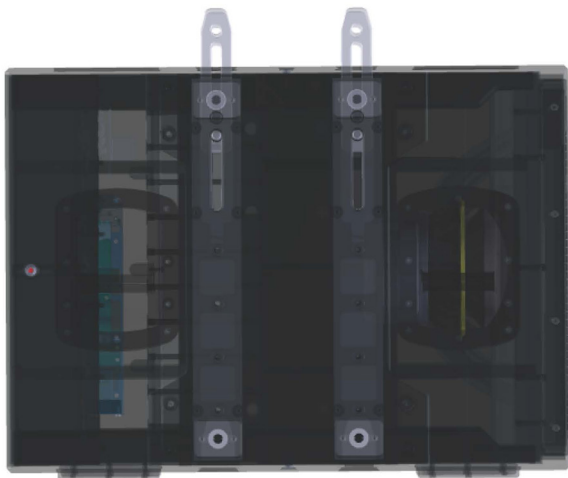
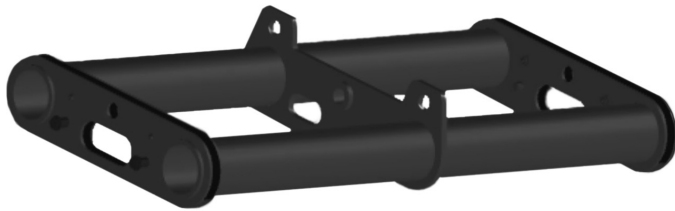


GRAVITY 218 SUBWOOFER



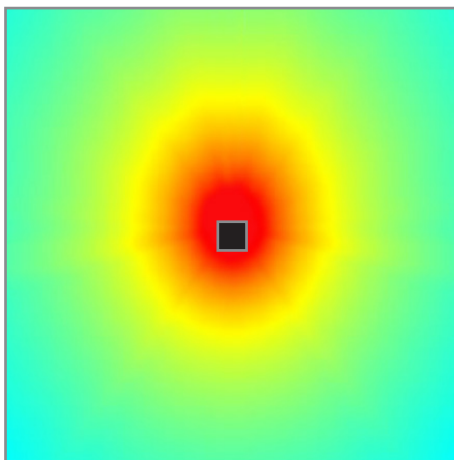
OPTIONAL RIGGING

The Gravity 30 has optional rigging for hanging applications. It can be flown vertically using standard or cardioid formations. The rigging and flybar system will support up to 12 cabinets in either formation.



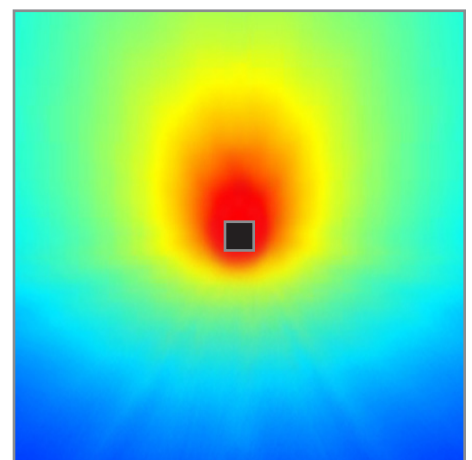
CARDIOID ARRAYABLE

SPL plot generated based on 50m area with 3 cabinets in standard formation.



Standard

SPL plot generated based on 50m area with 3 cabinets in cardioid formation.



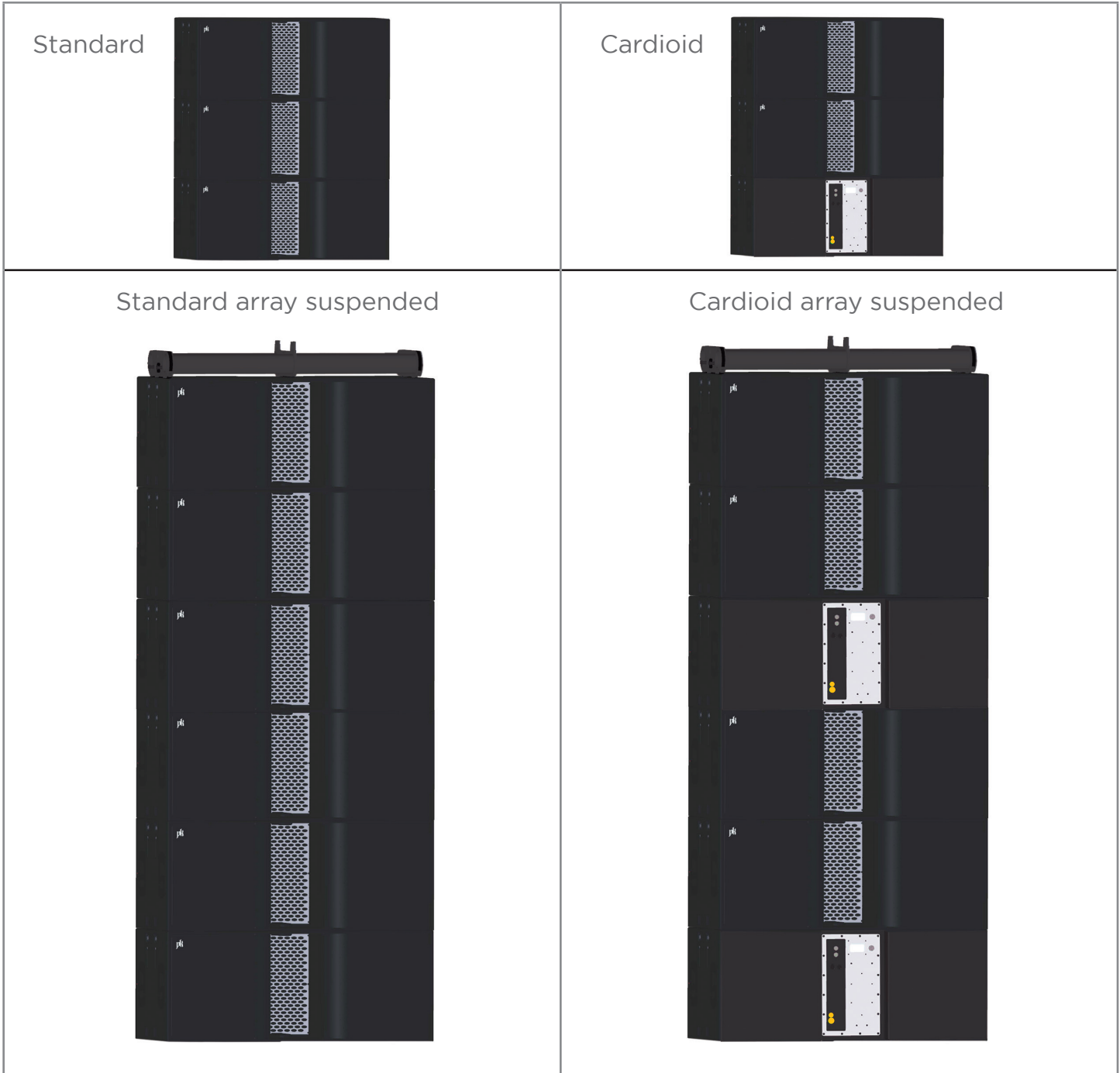
Cardioid

GRAVITY 218 SUBWOOFER



CONFIGURATIONS

The Gravity 218 can be flown or ground stacked depending on the application. With the optional rigging plates installed on the sides of the cabinets, up to 12 modules can be flown in standard or cardioid format when used in conjunction with the Gravity flybar. On the ground, the modules can be stacked horizontally in both cardioid or standard configuration, up to 3 modules high.



GRAVITY 218 SUBWOOFER



DIMENSIONS

