

STOP MAINTAINING YOUR WI-FI NETWORK AND START MANAGING IT

If you are like most manufacturing organizations, then your Wi-Fi network is mission critical. As a result, it's time to stop chasing down Wi-Fi issues with tools and it's time to start managing it centrally like a strategic asset.

As the Wi-Fi Performance Company, our mission is to help you identify issues before they impact operational efficiency. Our discrete and continuous Wi-Fi monitoring measures the quality of Wi-Fi experiences from the end-user's point of view on every device, in every location, all the time.

Value to Your Organization

Wi-Fi is a key piece to your organization's digital transformation. It's widely seen as a mission critical asset because of how it enables workflow performance, robotics, barcode scanners, Voice over IP, RFID and location tracking systems.

So instead of chasing down issues with tools and reacting to complaints, 7SIGNAL brings Wi-Fi performance analytics data to you, from every corner of your manufacturing facility.

With alerts and notifications indicating poor performance, IT professionals can address Wi-Fi issues proactively and make better device decisions for their organizations. In addition, they can avoid those "drop-everything" moments when connectivity and throughput disrupt productivity.

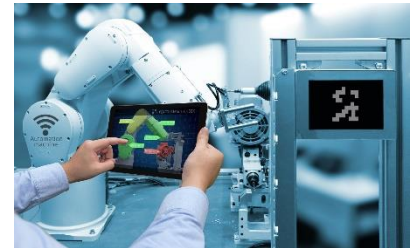
Products

Patented Wi-Fi sensors called **Sapphire Eyes™** use software as a service to benchmark the performance of locations with around-the-clock user experience testing and passive scanning of the 2.4 and 5 GHz frequency bands.

Sapphire Eye Capabilities

Active Tests	Throughput, packet loss, latency and jitter, radio association, authentication, IP and DNS services
Passive Tests	Beacon availability, airtime utilization, channel utilization, data rate utilization, spectrum analysis, packet capture
APs Measured	<ul style="list-style-type: none">• Sapphire Eye 2100, 4 to 8 APs based on signal strength• Sapphire Eye 500, 1 to 3 APs based on signal strength
Radio Specs	802.11ac 3x3:3

7SIGNAL's **Mobile Eye™** software crowdsources Wi-Fi performance data at pre-defined intervals from wireless devices on the network. Smartphones, tablets and laptops running Windows, macOS, iOS and Android operating systems execute discrete Wi-Fi performance tests in the background against test endpoints you strategically place in your environment, at a periodic interval you define.



WHY 7SIGNAL

- Increase uptime by ensuring machines and people are connected throughout your plant facilities
- Boost productivity by tracking wireless devices globally and enabling the efficient use of wireless devices that increase productivity
- Expand your visibility into production processes to increase uptime
- Adapt to changing IoT market conditions quickly using real-time Wi-Fi data analytics and intelligence
- Performance testing is discrete, at pre-defined intervals

How It's Different

Unlike your Wireless LAN vendor, 7SIGNAL provides visibility of the Wi-Fi experience from the end-user's point of view. 7SIGNAL software "lives on the edge", on client devices, where the wireless experience matters most.