




Changes in the Latest Update of SkyDesk Cards R



Aug 2018

Fuji Xerox Co., Ltd.

Summary

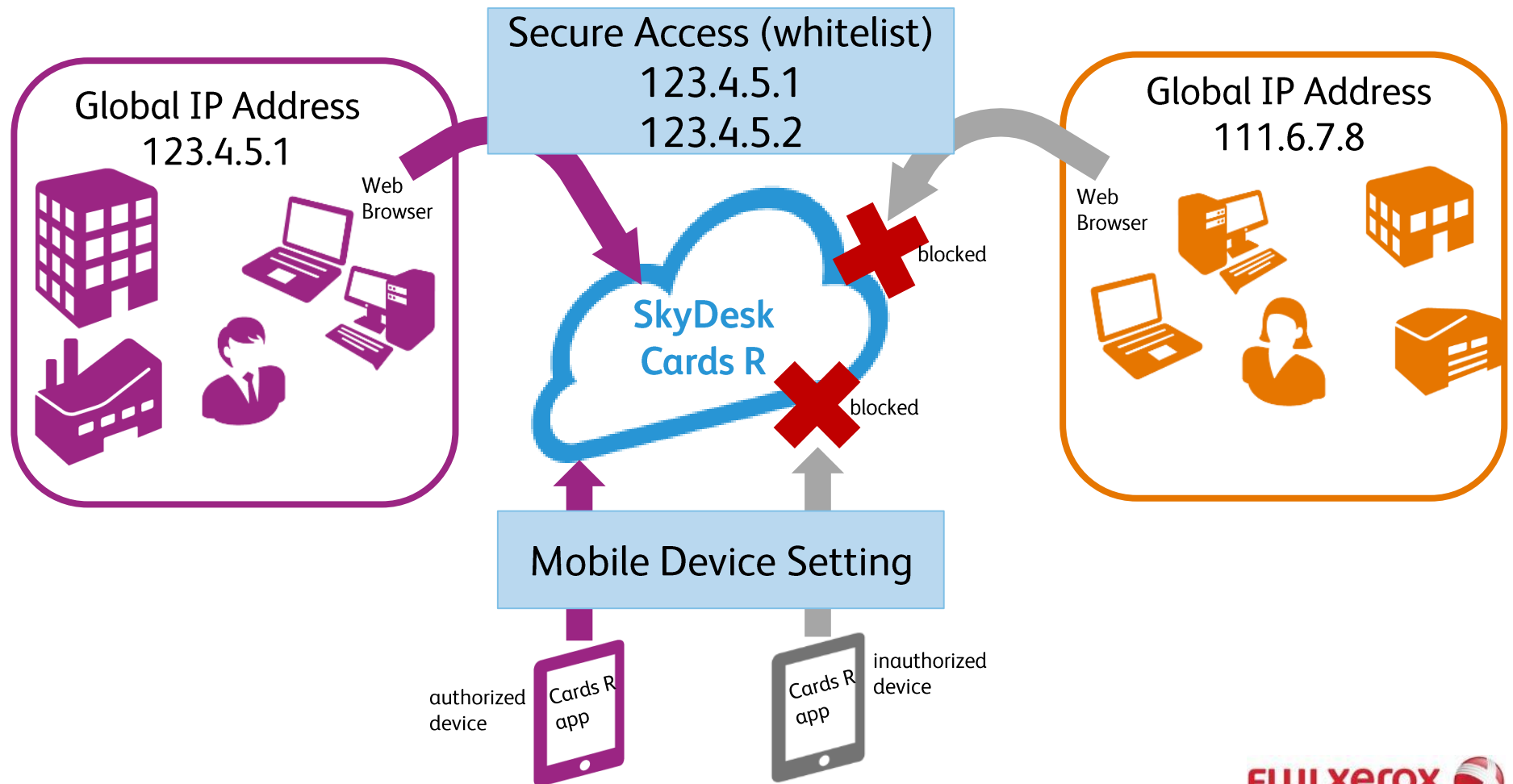
Thank you for using SkyDesk Cards R.

In order to improve your experience with SkyDesk Cards R, we have released a new paid option, Secure Access.

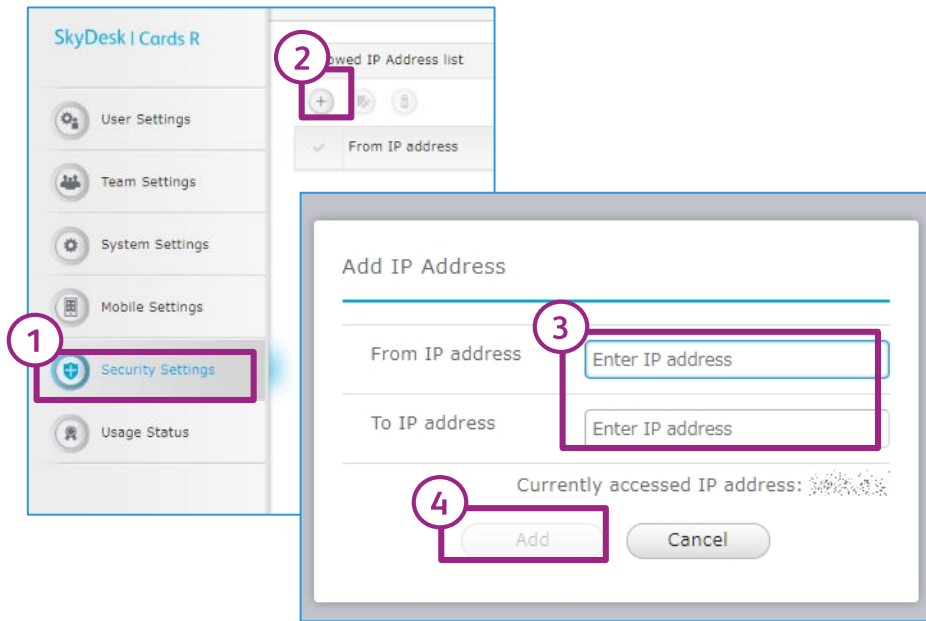
This document explains the important changes.

What is Secure Access?

In addition to Mobile Device Setting, the existing access control that allows you to manage mobile devices to access SkyDesk Cards R, Secure Access enables you to manage access from web browsers by setting the trusted global IP addresses to a "whitelist".



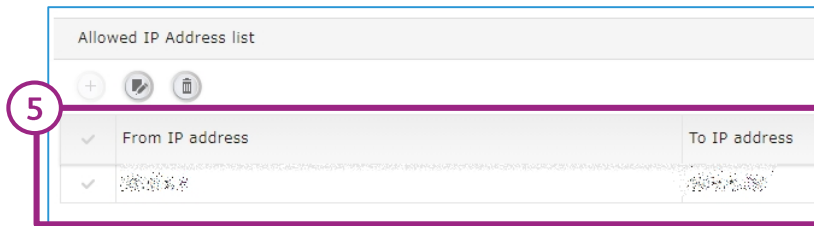
How to set IP addresses to whitelist



➤ How to set IP addresses to whitelist

Security Settings will be shown to the users with the administrators privilege when the SkyDesk Cards R Secure Access option is purchased and allocated to your organization.

1. Open Settings > Security Settings
2. Click on Add at Allowed IP address
3. Enter the range of IP address
4. Click on Add
5. The whitelisted IP addresses will be shown on the list



Note

Please note that

- you have to have global IP addresses to use Secure Access,
- you have to purchase Secure Access as many as the number of users in the organization,
- you cannot use SkyDesk Cards R from other than the allowed IP addresses once you specify them, and
- Allowed IP addresses of SkyDesk Accounts settings overrides SkyDesk Cards R Secure Option.

