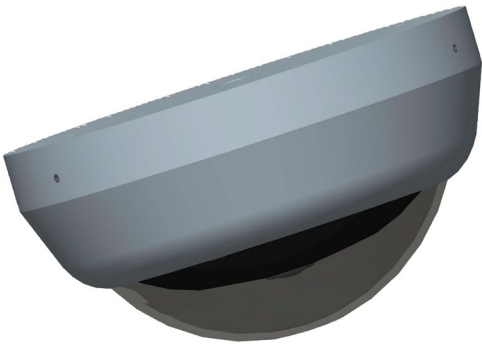


BDH-7500HB Outdoor Dome Housing

with heater/blower



This rugged housing with heater and blower for extreme environments allows the Bosch Panoramic 7000 series 12-megapixel camera to be deployed outdoors. Bosch camera not included.

Power: Housing - separate power supply rated at the housing at 24VAC @ .5A on separate power conductor. Camera - Bosch camera requires PoE

Environmental:

Housing -40C to +50C. Camera upper max 40C. This housing is not recommended for use in regions that will experience temperature in excess of 105F.

The heater/blower is designed to extend the low temperature operating range of the camera and minimize frosting on the bubble. Internal condensation should not be a problem when properly installed with desiccant pack inside the housing.

The high temperature operating range is not extended by the housing. Depending on how the unit is installed, the operating temperature could decrease by becoming hotter than the actual ambient temperature. In other words, if the housing is installed under the eave of a building or any area that is not in direct sunlight, there is little to no effect on the camera operating temperature. When mounted facing down, such as on the wall arm or wall arm on a vertical pole, there is little effect on the camera operating temperature. When mounted on a vertical surface, looking horizontally, and exposed to direct sunlight, the temperature rise of above ambient will be around 10 to 12 degrees C during time of peak exposure to the sun.

Example: if mid-day, temperature is 35C (95F), during the time the camera bubble is exposed to the sun, inside temperature will increase to approximately 46C (115F), for a change of 11C (20F). Note: it could be a little more or a little less of a temperature change based on where the housing is mounted in correlation to the path of the sun.

It is critical to understand these factors (avg max temp, mounting direction, and sun angle) for the location to determine if this housing with this camera is suitable for the application. If the application calls for extending the upper operating temperature range based on these factors, then an active cooling housing will be required. Contact our team for pricing for such systems.

Body: 6061-T6 Aluminum with powder coat finish

Dome: Optically Clear Nylon

Protection Levels: designed to meet ingress protection level of IP66 and impact protection level of IK10

Structure mounting: fasteners not included. Recommend selecting appropriate fastener for the structural material supporting the dome or mount with a minimum pull out strength of 150lbs, 4 fasteners required for dome. Hole pattern template included.

Wire Management: Includes one Heyco #M4520GCT for one cable up to 7/32" (0.219") diameter and five wires up to 5/64" (0.080") diameter or 11 wires up to 3/64" (0.047") diameter. The grommet has a thin layer of rubber covering each of the smaller holes. The idea is for the installer to push wires through the holes and break through the thin layer, leaving the unused holes sealed. The fitting is then tightened down to create a seal around the network cable and power wire.

Weight: 6.8 lbs. (Bosch panoramic 7000i weight 1.16lbs. – sold separately)

Dimensions (LxWxH): 8.88"x8.88"x4.60"

BDH-7500HB Outdoor Dome Housing

with heater/blower

PART NUMBER: BDH-7500HB

KITS

BDH-7500HB-CAK Conduit Mount Kit

BDH-7500HB-CMK Corner Mount Kit

BDH-7500HB-PCK Pendant Mount Kit

BDH-7500HB-PMK Pole Mount Kit

BDH-7500HB-WAK Wall Mount Kit

ACCESSORIES

BMT-75CA Conduit Base Adapter

BMT-75CM Corner Mount Adapter

BMT-75PC Pendent Cap Adapter

BMT-75PM Pole Mount Adapter

BMT-75WA Wall Arm Mount

Bosch UPA-2450 – recommended power supply

BMT-75T45 Field-adjustable Angle Mount

BMT-GA75A AutoDome wall Arm and Adapter

BMT-VG75A AutoDome Wall Arm Attachment Adapter

ORDERING & PRICING:

Online:

<https://midches.myshopify.com/collections/bdh-7500-kits>

Lead time +/- 30 days. No returns or exchanges, all sales final.

CONTACT:

Support@MidChes.com

+1 410 612 9640