

Bosch Tips and Benefits

How Bosch IP Cameras Integrate as Intrusion Panel Inputs and Outputs



BOSCH

Invented for life

Key benefits

- ▶ Add supervised motion or audio detection to intrusion panel using any Bosch IP camera
- ▶ Send video images with B Series personal notifications
- ▶ Control recording, PTZ and other camera features using intrusion panel
- ▶ No NVR needed; Capture video on SD memory cards



Supervised Motion Detectors Using Bosch IP Cameras

Bosch's B Series control panels have a built-in network connection and can network directly to **any** Bosch IP CCTV camera using them as fully supervised detection points. Bosch IP cameras support customizable motion detection, audio detection, and anti-masking which increases the level of detection without adding costs.

Step 1: Program the IP camera's DNS or IP address into the B Series Control panel and change the detection point's SOURCE to IP Camera.

Step 2: Log into the Bosch IP camera and program VCA to configure motion, audio, or any other analytical alarms. The camera will trigger the intrusion panel's point when the IP camera detects motion or with any other video analytical alarm.

IP CAMERAS		Camera 1	
Camera name		Front Door Camera	Network Address
Camera name (second language)			
URL or IP address		192.168.0.103	Point Supervision
Bosch Connected Cameras			
RCP+ port #		1756	
Service password			
Supervision period (sec.)		30	
Live (Video)			
Port #		80	
Use HTTPS?		No	
User Name			
Password			

SOURCE to IP
Camera

Point Source for Point 11

Point Source

☐ Unassigned
☐ Octo-input
☐ Wireless
☐ Onboard
☐ Output
☐ Keypad
☒ IP Camera

OK Cancel

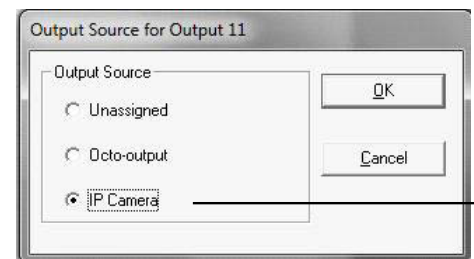


No NVR required: The surveillance software is included and video can be recorded on the IP camera's SD card or remotely on a PC, Drop Box account, or FTP server.

Personal Video Notifications Using Bosch IP Cameras

Bosch's B Series control panels can send personal notifications directly to the end-user at no cost using live images from the IP camera. Video images can be easily added to any B Series' personal notification such as opening/closings, alarm verifications, and motion detection.

Step 1: Program one of the B Series' output as IP CAMERA, and then program that output for alarms, openings/closings, or any other panel event. Over the customer's network, the B Series control panel will activate the IP camera's virtual input when its output activates.



Output
SOURCE
to IP
Camera

Alarm E-Mail	
Send alarm e-mail	On
Mail server IP address	mail.live.com
SMTP user name	alarmssystem@outlook.com
SMTP password	*****
Format	Standard (with JPEG)
Image size	720p
Attach JPEG from camera	
Destination address	john@anyone.com
Sender address	alarmssystem@outlook.com
Test e-mail	
Send Now	Set

Step 2: Log into the Bosch IP camera and program ALARM EMAIL to configure the destination email settings for the personal video notifications. The B Series' outputs can also control other IP camera options including PTZ and video recording.

Personal video notifications can also include the IP camera's DNS or IP address. This allows recipients to connect directly to the activated IP camera by simply clicking on the supplied DNS or IP address.

Application #1: Motion Detection with Video Analytics

- ▶ Every Bosch IP camera features a common programming platform for viewing, programming, and advanced video analytics.
- ▶ Video Content Analyses (VCA) allows for motion detection to be programmed in a selectable view. If sources of false alarms could be present, simply unmask them in the camera's field of view.



Application #2: Burglary Cross Zoning using IP Cameras

- ▶ Each IP camera is a detection point on the B Series intrusion panel so arming status and programmable options such as *Burglary Cross Zoning* can be utilized using the IP camera as the second alarm. The IP camera can detect motion within a selectable view, audio within a selectable frequency and volume, and tampering such as masking of the camera.

Application #3: Built-in Two-way Audio

- ▶ Most Bosch IP cameras feature built-in microphones and loudspeakers that allows remote users to listen in on an area and communicate messages to visitors or intruders via the loudspeaker.
- ▶ Audio detection can be used to generate an alarm if needed



To manage many IP cameras or multiple sites on a mobile device and control camera features such as pan, tilt, zoom (PTZ), and audio, Bosch Security offers additional free video apps at: apps.bosch.com

Bosch Security Video Portal

To watch Bosch Security products in action or demonstration of these features and more, visit: video.boschsecurity.us

Bosch Security Online Training Academy

To learn how to learn how to install and program Bosch Security products or register for one of our in-class trainings, visit: training.boschsecurity.us

