

Integrated Security Solutions



BOSCH

Invented for life



Table of Contents

Control Panels	4
Keypads	8
Communication Modules	16
I/O Expanders	20
Door Control	24
Home Automation	25
RF Receivers	26

Our integrated security solutions address the challenges you face every day. Intelligent control panels with more power and more capacity. Advanced communications solutions for flexibility and reliability. Keypads that are easier to use. Innovative detectors with superior false alarm immunity and catch performance. Combination intrusion and fire, access, IP video, and smart home integration all with one panel. Bosch provides the tools you need to create superior solutions for your customers.



Control Panels

Bosch offers a wide range of control panels to provide the right solution for any application, small or large.

Bosch B and G Series include advanced features such as:

- ▶ On-board Ethernet port with IPv4 and IPv6 compatibility for IP alarm communication and remote programming
- ▶ On-board USB means easy on-site RPS programming
- ▶ Plug-in PSTN and Cellular communication modules allow for simple installation and future-proof upgrades
- ▶ Notifications via email and text message
- ▶ System operation from an iOS or Android device with the Remote Security Control app
- ▶ IP Video Integration to support up to 16 Bosch IP surveillance cameras
- ▶ Bilingual user interface with multiple language support

B Series**G Series**

	B3512	B4512	B5512	B8512G	B9512G
Points	16	28	48	99	599
Areas	1	2	4	8	32
Point Indexes	20	20	20	31	64
Users	10 + Service	32 + Service	50 + Service	500 + Service	2,000 + Service
Doors	—	—	—	8	32
Supervised Keypads	4	8	8	16	32
IP cameras	—	2	4	8	16
Outputs	3	27	43	99	599
Custom Functions	1	2	4	8	32
Log Events	128	128	256	2,048	10,192
SKEDS	1	5	5	40	80
Fire	Residential	Residential	Residential	Residential / Commercial	Residential / Commercial

B Series



B Series Control Panels are the most advanced solutions available for small to mid-sized applications with support for up to 48 Points, 4 Areas and 50 Users.



- ▶ Bosch IP camera integration video motion detection to activate points on the panel, triggering camera actions such as sending video or snapshots via email
- ▶ Supports a full range of intrusion detectors and RADION wireless
- ▶ Certified for residential fire applications
- ▶ Integrates with Z-Wave devices—such as lighting controls, door locks and temperature sensors—for home automation and remote monitoring

G Series



G Series Control Panels are approved for combination burglar and fire alarm applications and offer integrated access control and IP video integration. It supports up to 32 doors of access control, 599 points of burglary and fire protection and 2,000 users.



- ▶ Compatibility with legacy peripherals allows you to easily and cost-effectively upgrade existing GV3 and GV4 systems
- ▶ Supports a full range of intrusion detectors and RADION wireless
- ▶ Advanced features such as Area Re-Arm and Monitor Delay to ensure sensitive areas are secured, even when disarmed
- ▶ Integrates with Z-Wave devices—such as lighting controls, door locks and temperature sensors—for automation and remote monitoring

Keypads

Choose from standard LCD keypads, a color graphical LCD touch screen or ATM-style keypads. Models are also available for fire alarm applications.

Bosch keypads feature:

- ▶ Highly visible status indicators
- ▶ User-adjustable options such as volume and brightness
- ▶ Simple menu-style user interface
- ▶ Dedicated function buttons for common commands, including status indication
- ▶ Simple installation with self-locking base and chassis, lift-gate terminal strips and built-in bubble level
- ▶ Audible tones from the keypad sounder alert personnel to fire events and assist fire fighters in locating the keypad



	B942	B921C	B920	B930	B915	B925F	B926F
Type	Touch Screen	2-line Capacitive	2-line Standard	5-line ATM	2-line Standard	2-line Fire	2-line Fire
Intrusion Function Keys	Menu	■	■	—	—	■	—
Fire Function Keys	—	—	—	—	—	■	■
Indicators: All/Part On	■/—	■/—	■/—	■/—	■/■	■/—	■/—
Ready	■	■	■	■	■	■	■
Trouble	■	■	■	■	■	■	■
Power	■	■	■	■	■	■	■
Gas Alarm	■	■	■	■	■	■	■
Fire Alarm	—	—	—	—	—	■	■
Silenced Alarm	—	—	—	—	—	■	■
Supervision Error	—	—	—	—	—	■	■
Audible Tones	■	■	■	■	■	■	■
On-screen Help	■	■	■	■	—	—	—
Inputs/Outputs	4/1	4/—	—/—	—/—	—/—	—/—	—/—
125 kHz EM Prox Reader	■	—	—	—	—	—	—

B942/B942W Color Graphic Touch Screen Keypad



- ▶ Features an illuminated touch screen and graphical interface
- ▶ Elegant design and low profile fits with any modern decor
- ▶ Shows system messages for all areas
- ▶ Built-in presence detector lights the display when user approaches keypad
- ▶ Built-in proximity reader allows use of a token or card as replacement for a passcode, or for use with dual authentication for high security areas
- ▶ Four inputs and one output provide cost-effective expansion
- ▶ 2015 GOOD DESIGN™ Award Winner, Electronics



B920 Basic LCD Keypad



- ▶ Two-line LCD display with up to 32 character point, user and area names
- ▶ Shows two-line system messages for all areas
- ▶ Simple menu-style user interface
- ▶ Dedicated function buttons
- ▶ Situation-sensitive on-screen help

B921C Capacitive Touch LCD Keypad



- ▶ Features capacitive touch keys, which are more resistant to wear than traditional buttons
- ▶ Smooth, sleek surface is easy to clean and fits with any modern decor
- ▶ Shows two-line system messages for all areas
- ▶ Simple menu-style user interface
- ▶ Situation-sensitive on-screen help
- ▶ Four inputs provide simple, lower-cost point expansion

B930 Deluxe Five-Line ATM-style Alphanumeric LCD Keypad



- ▶ Five-line ATM-style LCD display with up to 32 character point, user and area names
- ▶ Shows system messages for all areas
- ▶ Simple menu-style user interface
- ▶ Programmable keypad shortcuts
- ▶ Situation-sensitive on-screen help for easy operation

B915 Basic LCD Keypad



- ▶ Two-line LCD display with up to 18 character point, user, and area names
- ▶ Shows two-line system messages for all areas

B925F and B926F Fire LCD Keypad



- ▶ Fully supervised devices for fire (B926F) and combined fire/ intrusion (B925F) applications
- ▶ ACK, SILENCE, RESET and DRILL function keys
- ▶ Two-line LCD display with up to 32 character point, user and area names
- ▶ Simple menu-style user interface
- ▶ Distinct sounder tones to alert you to a fire alarm, a fire trouble or fire supervisory events as they occur



Legacy Keypads

The G Series panel supports a variety of legacy Bosch SDI keypads, including:



D1255 Series Keypads



D1260 Series Keypads



D1256RB Fire Keypad



D1257RB Remote Fire Alarm Annunciator

Communication Modules

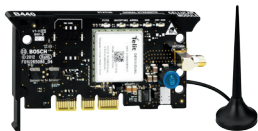
Plug-in communication modules simplify communication and allow for simple installation and future-proof upgrades.

Use an Ethernet or cellular data network (3G EVDO, CDMS or GSM/SPRS) to transmit alarm events to the central monitoring station and connect to the Remote Security Control app for remote configuration and service using RPS (Remote Programming Software).

Both Modem4 and Contact ID formats are supported over telephone and Conettix IP communication channels.

B44x Connetix Plug-in Cellular Communications

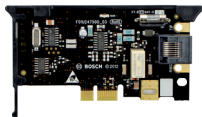
Enables secure two-way IP communication over cellular networks. Choose B440 (Verizon 3G EVDO), B441 (Verizon CDMA) or B443 (HSPA + for Latin America and Canada).



- ▶ Remote programming and monitoring of compatible panels
- ▶ Personal SMS message and e-mail notification options
- ▶ LED status information and advanced keypad diagnostics

B430 Plug-in Telephone (PSTN) Communicator

Provides communication over the PSTN (Public Switched Telephone Network) by connecting the PSTN to the control panel. Provides a single telephone line with RJ-31 connection for central station reporting and remote programming.



- ▶ Configured directly from Bosch Remote Programming Software (RPS) or a keypad, eliminating the need for separate configuration
- ▶ Easily installs into the control panel's on-board plug-in module connector

B450 Connetix Plug-in Communicator Interface

Four-wire powered SDI2, SDI, or option bus device that provides two-way communication over commercial cellular networks using a Plug-in Cellular Communicator (available separately).



- ▶ Full two-way IP communication
- ▶ Plug and Play installation
- ▶ Supports remote installation of cellular modules for improved signal

B426 Ethernet Communication Module

Four-wire powered SDI2 bus device that provides two-way communication over IPv4 or IPv6 Ethernet networks.



- ▶ Full two-way IP event reporting
- ▶ 10/100 Base-T Ethernet communication
- ▶ NIST-FIPS197 Certified for 128-bit to 256-bit encryption
- ▶ Plug and Play installation, including UPnP service to enable remote programming behind firewalls
- ▶ Advanced configuration by browser or Remote Programming Software (RPS)

I/O Expanders

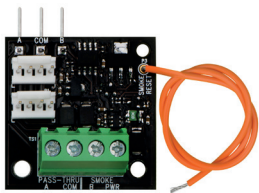
Hardware and wireless expansion options provide a variety of ways to customize the system to your needs.

New expansion modules can be mounted up to 1,000 feet away from the panel for added installation flexibility.

Any combination of hardwire, addressable and wireless expansion is possible to meet application requirements.

B201 2-wire Powered Loop Module

Provides a single, powered initiating device circuit. Supports compatible 12 V 2-wire smoke detectors and burglary devices.



- ▶ Supports up to 20 compatible smoke detectors
- ▶ Resets latching devices from the control panel
- ▶ Connects to the control panel terminal block with easy-to-install integrated pins
- ▶ Use with a D132A Smoke Detector Reversing Relay Module for smoke detectors with integrated sounders

B208 Octo-input Module

An 8 point expansion SDI2 device, this module is fully supervised and communicates all point status changes back to the control panel. The module's expansion points operate the same as the points on the control.



- ▶ Programmable input point functions
- ▶ Easy-to-read switch addressing
- ▶ Switches allow for ease of use in device addressing
- ▶ Interconnect wiring connectors for easy installation

B308 Octo-output Module

For applications requiring Form C outputs to operate auxiliary systems or to display fire system status at remote annunciators. Can interface with building components such as HVAC and door lock releases for complete system control and monitoring.



- ▶ Programmable output functions
- ▶ Easy-to-read switch addressing
- ▶ Provides 8 Form C relays
- ▶ Allows remote control of outputs
- ▶ Interconnect wiring connectors for easy installation

B299 POPEX Module

Communicates with control panel over the SDI2 bus. Provides support for up to 100 POPIT (Point Of Protection Input Transponder) devices over a single expansion loop using two pairs of terminals.



- ▶ Provides point identification for up to 100 connected addressable initiating devices using POPITs
- ▶ Supervises wiring to devices for circuit integrity
- ▶ Expands the number of points in the system

B600 ZONEX (retrofit) Module

Communicates to the control panel through a proprietary connection and provides support for two ZONEX buses.



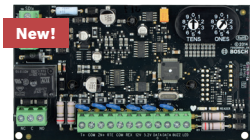
- ▶ Provides legacy ZONEX input/output support
- ▶ Includes two ZONEX buses for continued ZONEX support on G Series control panels
- ▶ Compact size and 3-hole mounting footprint for easy installation

Door Control

Allows access control integration for compatible Bosch control panels. Authority for access is controlled by the user level, the group of the user, the time of day, the door state and the area armed state. Control each authority restriction through automatic and manual functions.

B901 Access Control Module

The B901 Access Control Interface Module is a fully supervised, addressable SDI/SDI2 bus device.



- ▶ Direct interface to 26-bit Wiegand card readers
- ▶ 14 programmable levels of access authority
- ▶ Onboard buzzer output
- ▶ Supervised onboard point
- ▶ Request-to-Exit and Request-to-Enter inputs can have a shunt only option
- ▶ Four door states: Locked, Unlocked, Secured, Cycle

Home Automation

Using the G100 Gateway, B Series and G Series panels can use Z-Wave devices to create smart, connected systems that control security, lighting, heating, cooling and more—all customized for your home or business.

G100 Gateway



- ▶ Compatible with a wide range of Z-Wave devices
- ▶ Expandable applications
- ▶ Easy-to-use dashboard, web-based and mobile app interface
- ▶ Advanced energy metering capabilities



RF Receivers

Our range of wireless devices integrates with our control panels to provide secure, scalable solutions for any application.

B810 RADION Receiver

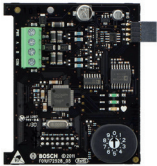
Connects RADION wireless peripherals to Bosch control panels over the SDI2 bus. Advanced RF diagnostics and multiple device enrollment options ensure efficient and effective installation.



- ▶ RF communication at 433.42 MHz
- ▶ Dual internal antennas improve reception and reliability
- ▶ Supports supervision of 504 wireless points, 1,000 keyfobs and 8 repeaters
- ▶ Cover and wall tamper protection

B820 Inovonics Interface Module

Allows communication between Bosch control panels and an Inovonics EN4200 EchoStream Serial Receiver with EchoStream Wireless transmitters.



- ▶ Install up to 1,000 ft. from the control panel
- ▶ Supports 350 wireless devices (points and keyfobs combined) and 8 repeaters