



**Winsted®**  
Control Room Consoles

**SIGHT-LINE™**  
PRESTIGE SERIES CONSOLES



# PRODUCT FEATURES AND HIGHLIGHTS

## Three Base Console Widths

Base consoles are available in three widths: 24", 48", and 72". Features the Insta-Lock fastening system for simple construction. Black powder-coat finish.

## Corner Fillers

Corner fillers help fit consoles into rooms, and deliver a convenient, ergonomic wrap-around operator console. Choose from 15°, 45°, and 90° concave corner options or 15° and 45° convex corner options.

## Easy-Access Cable Management

Enhance reliability while protecting and managing your cables. All Prestige consoles feature convenient cable management solutions that are easily accessible. A large drop-down interior tray is also available as an option.

## Multi-Purpose Locking Doors

Double-panel doors are extra-sturdy to support a CPU shelf or file/storage bin for convenient swing-out access.

## Anti-Tip Extension

Extensions stabilize the console on all in-line console configurations. Anti-tip extensions come standard with all end frames. Black powder-coat finish.

## Data/Power Access

Openings for a universal data mounting plate (RJ-45, HDMI, CAT-5, CAT-5E, CAT-6, BNC, and S-Video) and openings for duplex power are conveniently located at the back of the work surface. Data mounting plates not included, duplex power outlets included.

## Versa-Trak Monitor Mounting System

Integrated horizontal aluminum track system will support a wide variety of monitor arrays. Versa-Trak offers the ultimate in versatility with easy horizontal adjustment. Post-mounted VESA brackets provide vertical adjustability along with the ability to tilt and pivot the monitors.

## Decorative TruForm End Panels

Complete the look of your console with our popular TruForm end panels. TruForm panels are available in a wide variety of colors. End panels can also be custom ordered in laminate or solid-surface materials.

## Rack Mount Turret

Optional Sight-Line rack mount turrets can be positioned to meet your needs. Available in either 7" (4U), 10-1/2" (6U), or 19-1/4" (11U) by 19"W EIA rack space. Features a vented top. Decorative wood trim is available.

## Adjustable Monitor Mounts

VESA-compliant pivot/tilt mounts easily attach monitors to a support post, and provides smooth pivot and pitch adjustment for optimal viewing of flat panel monitors.

## Four Monitor Mount Post Heights

Available in four different heights: 15", 28-1/2", 42" and 60" so you can create a monitor array suitable for any application.

## Optional M-View Monitor Wall

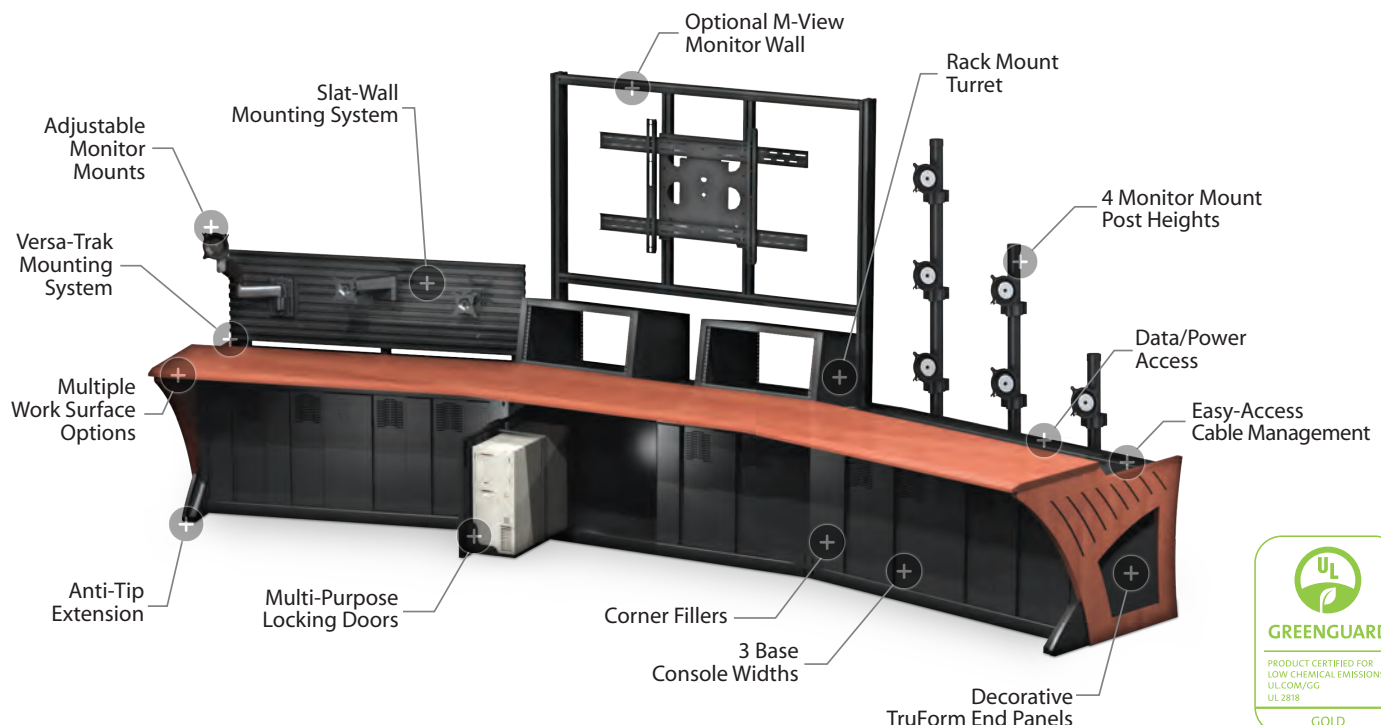
Sight-Line and Insight consoles work in tandem with our M-View monitor wall system to support large monitors over rack mount turrets.

## Multiple Work Surface Options

Choose from four durable work surface options. Our innovative Endurance Plus, our proprietary Comfort Edge, our popular laminate with Safeguard, and flexible Corian® work surfaces are all available for our Prestige consoles.

## Slat-Wall Mounting System

Constructed of high quality extruded 6105-T5 aluminum, the Slat-Wall system is 15" high and designed to support a variety of monitor mounts and accessories.



## VERSA-TRAK MONITOR MOUNTING SYSTEM

Integrated horizontal aluminum track system will support a wide variety of monitor arrays. Versa-Trak offers the ultimate in versatility with easy horizontal adjustment. Post-mounted VESA brackets provide vertical adjustability along with the ability to tilt and pivot the monitors.



## INTEGRATED DATA/POWER

Keep your electronics up and running. Sight-Line, Slat-Wall and Insight consoles feature openings for universal data mounting plates (not included) and openings for duplex power outlets (included). The openings are conveniently located at the back of the work surface where they are within easy reach to connect electronics.



## EASY-ACCESS CABLE MANAGEMENT

Enhance reliability while protecting and managing your cables. All Prestige consoles feature convenient cable management solutions that are easily accessible. A large drop-down interior tray for additional cable management is also available as an option.



## MULTI-PURPOSE DOORS

Double-panel front and rear doors are extra sturdy to support a CPU shelf or file/storage bin for convenient swing-out access. Prevents reaching and working in confined storage spaces.







## SIGHT-LINE™ SINGLE OPERATOR



### SINGLE-OPERATOR SIGHT-LINE CONSOLE

MODEL#	HEIGHT	WIDTH	DEPTH
W5723	28-1/2" (724mm)	78" (1981mm)	43-3/4" (1111mm)
COLOR	SIDE PANEL	WORK SURFACE	
BLACK	SHARK GREY TRUFORM	SHARK GRAY ENDURANCE PLUS	

Sight-Line console comes complete with three monitor mounts.

## SIGHT-LINE CONSOLES

Our flagship console is truly one-of-kind with a world class feature set, which is complimented by an impressive appearance, making it ideal for all control room applications. Sight-Line consoles are modular, reconfigurable and expandable to meet your changing needs. Sight-Line consoles can also be customized in numerous ways to create a unique solution.

Sight-Line consoles feature our integrated Versa-Trak monitor mounting system, which offers the ultimate in adjustability. The Versa-Trak system allows users to optimize and easily modify sight lines and viewing angles based on personal needs. If you are looking for unparalleled beauty and function designed specifically for your needs, you have found the solution. Whether you need a single workstation or a complete control room, Sight-Line consoles are perfect for all installations.





# SIGHT-LINE<sup>TM</sup>

## TRIPLE OPERATOR



### TRIPLE-OPERATOR SIGHT-LINE CONSOLE

MODEL#	HEIGHT	WIDTH	DEPTH
W5724	28-1/2" (724mm)	174-1/2" (4432mm)	61-1/2" (1562mm)
COLOR	SIDE PANEL	WORK SURFACE	
BLACK	WHITE TRUFORM	GRAPHITE NEBULA COMFORT EDGE	

Unique design provides ample space for three operators. Console includes three dual-mount LCD poles.

## AXIOM MONITOR MOUNTS: ( 1.5" DIA. MOUNTING POSTS)

### W6471

15" Post - Single Monitor  
Post Mount, Vertical



### W6472

28-1/2" Post - Dual Monitor  
Post Mount, Vertical



### W6473

42" Post - Triple Monitor Post  
Mount, Vertical



### W6491

15" Post - Single Monitor  
Articulating Arm



### W6492

28-1/2" Post - Single Monitor  
Articulating Arm



### W6493

28-1/2" Post - Dual Monitor  
Two Articulating Arms



*A custom Sky Track  
monitor wall can be  
integrated to support your  
larger monitors. Contact  
Winsted for details.*



## PRESTIGE MONITOR MOUNTS: ( 1.9" DIA. MOUNTING POSTS)

### E5081

15" Post - Single Monitor  
Post Mount, Vertical



### W5772

28-1/2" Post - Dual Monitor  
Post Mount, Vertical



### W5773

42" Post - Triple Monitor  
Post Mount, Vertical



### W5777

15" Post with  
Dual 15" Extension Arms



### W5690

Dual-Post Large Monitor Mount  
(Supports 42" - 63" Monitors)



### W5774

15" Post with  
15" Extension Arm



### W5775

28-1/2" Post with  
15" Extension Arm



### W5776

42" Post with Two  
15" Extension Arms



### W5778

15" Post with  
Height Adjustable Arm



### W5698

28-1/2" Post with VESA Mount  
(Supports 26" - 45" Displays)



*\* 60" Pole with mounts available. Contact Winsted for details.*



# PRESTIGE ACCESSORIES



**RADIAL END CREDENZA**  
W5630 / W5631



**RACK RAILS**  
56165



W5664



56679



10679

**TASK LIGHTS**



**CPU SHELF**  
(Door Sold Separately)  
56087



**FILE STORAGE BIN**  
(Door Sold Separately)  
56088



**RACK MOUNT TURRET**  
W5661



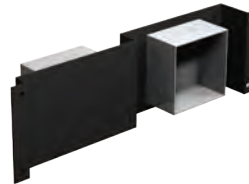
**RACK MOUNT TURRET**  
56030



**WOOD DOORS**  
56569



**TELEPHONE TRAY**  
W6469

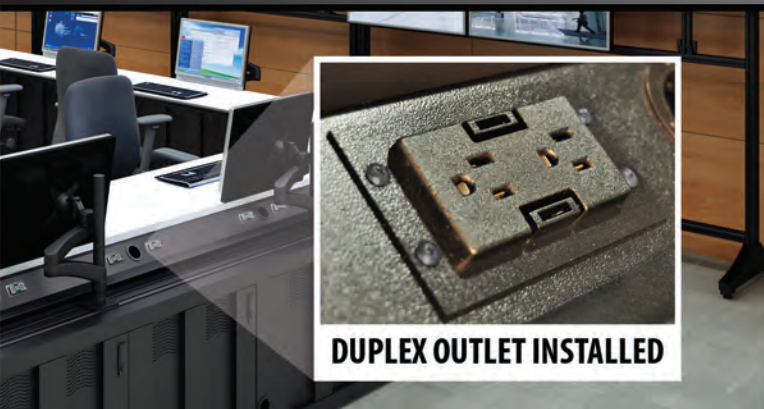


**ELECTRICAL BOX WITH BRACKET**  
56265



**POWER STRIP**  
W5650

## DYNA-LINQ™: MODULAR ELECTRICAL SYSTEM



**DUPLEX OUTLET INSTALLED**

## AIR COMMAND™: PERSONAL ENVIRONMENTAL CONTROL STATION



ADDITIONAL ACCESSORIES AVAILABLE: **CONTACT WINSTED FOR DETAILS**

# WORK SURFACE - OPTIONS



**LAMINATE WITH SAFEGUARD™** Choose from a broad range of colors, textures and patterns. We supply laminates from all the major manufacturers. The high pressure laminate is permanently bonded to an industrial grade 45 lb. density particle board core for strength. The work surface is finished with our durable Safeguard Edge.

**COMFORT EDGE™** Our urethane Comfort Edge work surface offers the ultimate in flexibility and durability. The black urethane edge is molded to an industrial grade 45 lb. density particle board and is available in a wide variety of colors. The Comfort Edge work surface features a smooth, contoured profile to improve operator comfort and maximize productivity.

**ENDURANCE EDGE™** Through a proprietary process, we insert a continuous protective bumper material in the front edge of the work surface. This protective bumper significantly increases the durability of the work surface, which is often subject to heavy physical stress in 24/7 control room environments.

**CORIAN®** work surfaces are durable and feature an attractive, seamless appearance. The solid colors penetrate through the entire thickness of the material so blemishes are easily repaired. The smooth, nonporous finish is hygienic and easy to clean, while being resistant to liquids and heat.

## CUSTOM END PANEL GRAPHICS



### SHOW YOUR IDENTITY

Add personality to your control room. We offer simple logo decals or complete end panel wraps with custom graphics. Contact Winsted for details.

LET WINSTED DESIGN A CONSOLE FOR YOU: [winsted.com/designservice](http://winsted.com/designservice)