



PARAMOUNT™

TECHNOLOGY CREDENZA

PRODUCT FEATURES AND HIGHLIGHTS

Laminate with Safeguard Top Panel

Paramount credenzas come standard with our durable laminated Safeguard Edge top panel. Our proprietary Endurance Plus and Comfort Edge top panels are also available as an option.

Base Racks

Welded EIA standard 19" wide base units offer 24-1/2" (14U) of rack space with front and rear tapped rack rails. The base racks come in one, two and three bay standard configurations and can be combined to create larger solutions.

Vented Bottom Base Panel

The vented base provides ample air flow for proper cooling of the electronics. The base also allows for optional 3" casters and 120mm fans to be integrated into the credenza.

Front & Rear Tapped Rack Rails

Paramount is equipped with front and rear 12-gauge tapped rack rails for equipment installation. Rails are stamped with numbered rack increments for easy equipment installation.

Side Panels

Side panels are available in steel, laminate or TruForm. Steel sides are black powder-coated. Laminate and TruForm are available in many colors. Contact Winsted for details.

Cable Routing

Thoughtful, well-engineered cable pathways accommodate the need for clean, convenient cable management.

Optional M-View Monitor Wall

One and two-bay monitor walls available for mounting large displays. Custom configurations also available. Contact Winsted for details

Optional Versa-Trak Mounting System

Integrated horizontal aluminum track system will support a wide variety of monitor mounts. Versa-Trak offers the ultimate in versatility with easy horizontal adjustment. Post-mounted VESA brackets provide vertical adjustability along with the ability to tilt and pivot the monitors.

Optional Adjustable Monitor Mounts

VESA-compliant pivot/tilt articulating monitor mounts easily attach monitors to the Versa-Trak and provide smooth pivot and pitch adjustment for optimal viewing angles and ergonomic sight lines.

Adjustable Leg Levelers

Easily fine-tune the height and level of your credenza with the adjustable leg levelers.

Thermal Management

Each base unit features a front-vented top panel with six 50mm fans to exhaust heat generated by the electronics.

Removable Rear Panels & Optional Hinged Doors

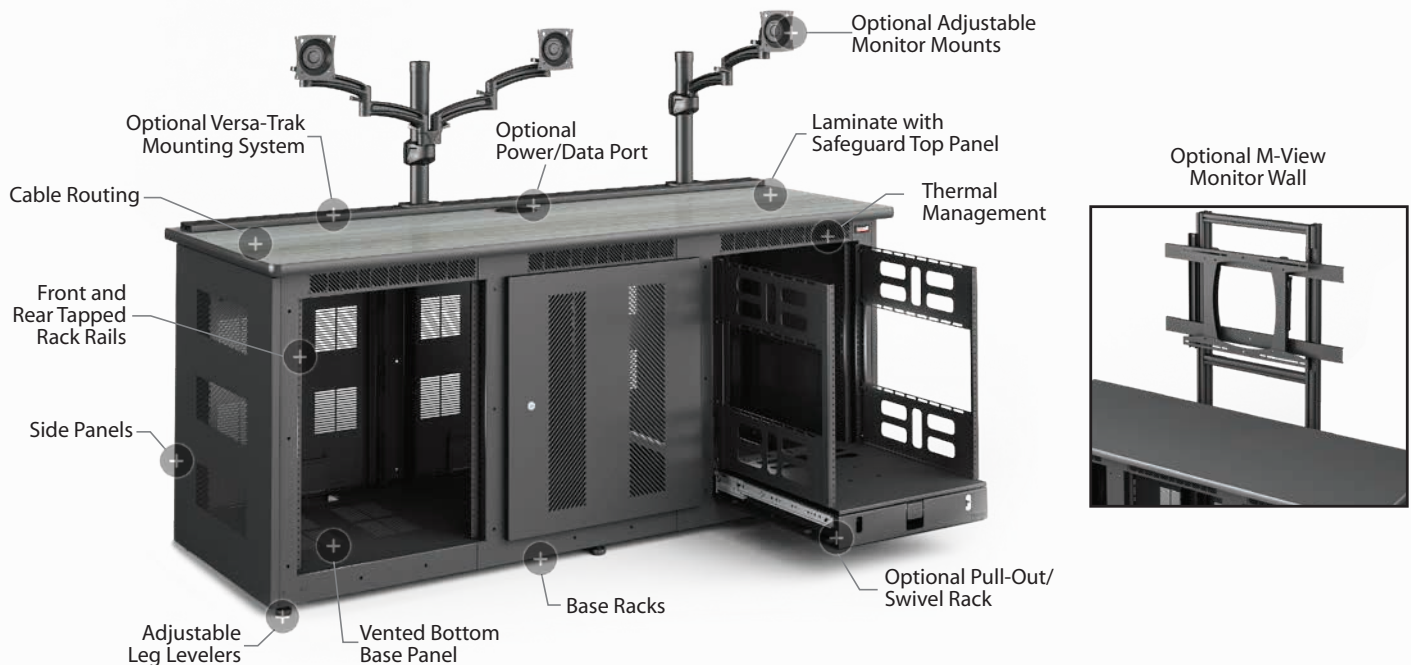
Paramount features full-length removable rear access panels and optional hinged front doors to provide quick, easy access to cables and equipment for simple installation and reduced maintenance time.

Optional Pull-Out/Swivel Rack

Pullout, swivel rack provides 12U of rack space and offers convenient, easy access to the electronics. Helps prevent reaching and working in confined spaces.

Optional Power/Data Port

Many options available. Contact Winsted for details.





TOP PANEL OPTIONS



LAMINATE WITH SAFEGUARD™ Choose from a broad range of colors, textures and patterns. We supply laminates from all the major manufacturers. The high pressure laminate is permanently bonded to a 1-1/8" thick industrial grade 45 lb. density particle board core for strength. The top panel is finished with our durable Safeguard Edge.

COMFORT EDGE™ Our urethane Comfort Edge top panel offers the ultimate in flexibility and durability. The black urethane edge is molded to a 1-1/8" thick industrial grade 45 lb. density particle board and is available in a wide variety of colors. The Comfort Edge work surface features a smooth, contoured profile to improve operator comfort and maximize productivity.

ENDURANCE EDGE™ Through a proprietary process, we insert a continuous protective bumper material in the front edge of the work surface. This protective bumper significantly increases the durability of the work surface, which is often subject to heavy physical stress in 24/7 control room environments.

MANY TOP PANEL COLORS AVAILABLE. [CONTACT WINSTED FOR DETAILS.](#)



PARAMOUNT - STANDARD ONE-BAY

MODEL#	HEIGHT	WIDTH	DEPTH
V9082	32" (813mm)	26-3/4" (679mm)	26-3/4" (679mm)
FRAME COLOR	SIDE PANEL	TOP PANEL	
BLACK	Black Laminate	Graphite Nebula Safeguard Edge	

Standard one-bay credenza with lift-off rear panel, black laminated sides and Graphite Nebula laminated top panel.



PARAMOUNT - STANDARD TWO-BAY

MODEL#	HEIGHT	WIDTH	DEPTH
V9084	32" (813mm)	50-1/8" (1273mm)	26-3/4" (679mm)
FRAME COLOR	SIDE PANEL	TOP PANEL	
BLACK	Black Laminate	Graphite Nebula Safeguard Edge	

Standard two-bay credenza with lift-off rear panels, black laminated sides and Graphite Nebula laminated top panel.



PARAMOUNT - STANDARD THREE-BAY

MODEL#	HEIGHT	WIDTH	DEPTH
V9086	32" (813mm)	73-1/2" (1867mm)	26-3/4" (679mm)
FRAME COLOR	SIDE PANEL	TOP PANEL	
BLACK	Black Laminate	Graphite Nebula Safeguard Edge	

Standard three-bay credenza with lift-off rear panels, black laminated sides and Graphite Nebula laminated top panel.



THREE-BAY TRUFORM CREDENZA

MODEL#	HEIGHT	WIDTH	DEPTH
V9030	32" (813mm)	73-1/2" (1867mm)	26-3/4" (679mm)
FRAME COLOR	SIDE PANEL	TOP PANEL	
BLACK	Carbon Fiber TruForm	Carbon Fiber Endurance Edge	

Three-Bay Paramount Credenza with Carbon Fiber TruForm front doors and side panels. Comes with matching Carbon Fiber Endurance Edge top panel.



THREE-BAY WITH VERSA-TRAK

MODEL#	HEIGHT	WIDTH	DEPTH
V9036	32" (813mm)	73-1/2" (1867mm)	26-3/4" (679mm)
FRAME COLOR	SIDE PANEL	TOP PANEL	
BLACK	Kentucky Kraftwood Laminate	Rugged Trail Safeguard Edge	

Three-Bay Paramount Credenza with Versa-Trak and dual-arm monitor mount. Also includes pop-up power/data port with two standard outlets and two Cat-5 ports.



THREE-BAY WITH STEEL DOORS

MODEL#	HEIGHT	WIDTH	DEPTH
V9032	32" (813mm)	73-1/2" (1867mm)	26-3/4" (679mm)
FRAME COLOR	SIDE PANEL	TOP PANEL	
BLACK	Black Vented Steel	Maroccino Safeguard Edge	

Three-Bay Paramount Credenza with hinged steel doors and vented steel side panels. Features a laminated Safeguard top panel.



TWO-BAY WITH STORAGE

MODEL#	HEIGHT	WIDTH	DEPTH
V9038	32" (813mm)	96-3/4" (2457mm)	26-3/4" (679mm)
FRAME COLOR	SIDE PANEL	TOP PANEL	
BLACK	Caluna Cherry Laminate	Caluna Cherry Safeguard Edge	

Two Single-Bay Paramount Credenzas with two middle bays of storage shelves.



FIVE-BAY WITH COMFORT EDGE TOP

MODEL#	HEIGHT	WIDTH	DEPTH
V9034	32" (813mm)	120-1/8" (3051mm)	26-3/4" (679mm)
FRAME COLOR	SIDE PANEL	TOP PANEL	
BLACK	Regency Mahogany Laminate	Regency Mahogany Comfort Edge	

Five-Bay Paramount Credenza with Comfort Edge top panel and laminated doors with clear polycarbonate panels.

PARAMOUNT ACCESSORIES



90320

PULL-OUT/SWIVEL RACK

MODEL#	DESCRIPTION	WEIGHT
90320	Pull-Out / Swivel Rack	45 LBS.

Pullout, swivel rack provides 12U of space and offers convenient, easy access to the electronics. Helps prevent reaching and working in confined spaces.

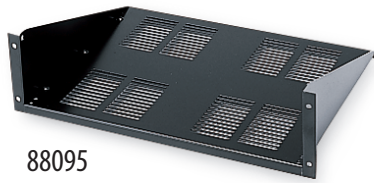


45701

DESKTOP POWER/DATA CENTER

MODEL#	DESCRIPTION	WEIGHT
45701	Two Power Outlets and Two Cat-5 Ports	3 LBS.

The pop-up power/data center easily installs into any work surface. Constructed of clear anodized aluminum. Many options and configurations available. Contact Winsted for details.



88095

UNIVERSAL RACK MOUNT SHELVES - BLACK

MODEL#	DESCRIPTION	WEIGHT
88091	3-1/2" (2U) Stationary shelf. 2-7/8"H x 18"D (73 x 457mm)	8 LBS.
88093	5-1/4" (3U) Stationary shelf. 4-5/8"H x 18"D (117 x 457mm)	9 LBS.
88095	8-3/4" (5U) Stationary shelf. 8-1/8"H x 18"D (206 x 457mm)	10 LBS.

Fits into any 19" EIA (482mm) rack. Heavy duty 14 gauge sides and 16 gauge bottom tray.



HINGED FRONT DOORS

MODEL#	DESCRIPTION	WEIGHT
90305	Laminated Door with Polycarbonate Pane	18 LBS.
90304	Custom Laminated Front Door	20 LBS.
90302	Standard Black Laminated Door	20 LBS.
90306	TruForm Front Door	20 LBS.
90307	Steel Vented Front Door	14 LBS.

Optional hinged front doors are available in five styles.



SIDE PANELS

MODEL#	DESCRIPTION	WEIGHT
90522	Standard Black Laminated Side Panels	45 LBS.
90524	Custom Laminated Side Panels	45 LBS.
90127	Steel Vented Side Panels	30 LBS.
90526	TruForm Side Panels	45 LBS.

Side panels are available in four styles.

MULTI-PURPOSE UTILITY DRAWER - BLACK

MODEL#	DESCRIPTION	WEIGHT
88323	3-1/2"H (2U) Utility Drawer	15 LBS.

Can be rack mounted or mounted to the underside of any wood work surface. 3-3/8" (86mm) inside height.

UTILITY DRAWER WITH LOCK - BLACK

MODEL#	DESCRIPTION	WEIGHT
88321	8-3/4" (5U) rack mountable pullout utility drawer	18 LBS.

All drawers feature heavy duty ball bearing slides for years of reliability.

COOLING FAN - WITH 5' CORD & PLUG

MODEL#	VOLTS	DECIBELS	CFM	WEIGHT
10705	115	43	105	2 LBS.
10724	220	43	105	2 LBS.
10725	115	30	55	2 LBS.

Easily mounts to vented side panels or vented base panel.

19" WIDE EIA BLANK PANELS



MODEL# BLACK	HEIGHT	RACK UNIT	WEIGHT
99140	1-3/4" (44mm)	(1U)	1 LB.
99141	3-1/2" (89mm)	(2U)	1 LB.
99142	5-1/4" (133mm)	(3U)	2 LBS.
99143	7" (178mm)	(4U)	3 LBS.
99144	8-3/4" (222mm)	(5U)	3 LBS.
99145	10-1/2" (267mm)	(6U)	4 LBS.
99146	12-1/4" (311mm)	(7U)	4 LBS.
99147	14" (356mm)	(8U)	6 LBS.
99148	15-3/4" (400mm)	(9U)	7 LBS.
99149	19-1/4" (489mm)	(11U)	8 LBS.
99152	24-1/2" (622mm)	(14U)	10 LBS.

Our 16 gauge steel blank panels are flanged for extra strength and they are finished attractively in textured powder coat paint. Just choose the appropriate size blank panel to provide the perfect finishing touch for all of your installations.

HORIZONTAL RACK LACING OPTIONS - BLACK

MODEL#	DESCRIPTION	WEIGHT
10220	1-3/4" Slotted lacing rack mount panel with horizontal slots	1 LB.
85276	Aluminum round bar rack mount cable guide extends cable life	0.5 LB.

All horizontal lacing options mount in any standard 19" opening.

RACK MOUNT POWER PANELS - BLACK



MODEL#	DESCRIPTION	AMP	CORD LENGTH	WEIGHT
98703	Six-Outlet	15	15' (4.5M)	4 LBS.
Six-outlet - 2 front, 4 back. 15 amp circuit breaker with on/off switch.				
98708	Eight-Outlet	15	15' (4.5M)	4 LBS.
Eight-outlet. Outlets rotated 90° to accept multiple transformer plugs.				
98709	Eight-Outlet	15	15' (4.5M)	4 LBS.
98714	Twelve-Outlet	15	15' (4.5M)	6 LBS.

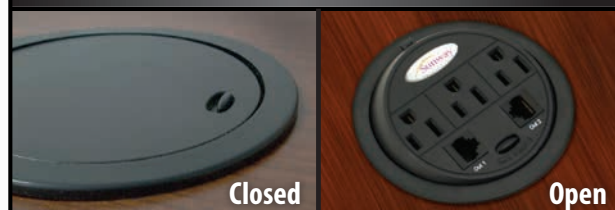
Rack mount power panels with surge suppressor.

3" PLATE CASTERS - SET OF FOUR

MODEL#	DESCRIPTION	WEIGHT
90782	Set of Casters for Paramount Credenza. One Set Per Frame.	5 LBS.

Heavy duty casters allow you to move your credenza with ease.

DESKTOP POWER GROMMET



MODEL#	DESCRIPTION	WEIGHT
10660	Three Power Outlets and Two Cat 5 Connections	1 LB.
10661	Three Power Outlets and Two USB Ports	1 LB.

Easily converts any desk, table or work surface into a ready-to-access power center. Simply rotate the grommet with its easy 180° rotation system and the grommet is ready to use. 4-3/8" outer ring requires 4.21" hole size. Eight foot power cord included. Many options and configurations available. Contact Winsted for more information.

VERSA-TRAK MONITOR MOUNTING SYSTEM

E5081

15" Post - Single Monitor Post Mount, Vertical



W5772

28-1/2" Post - Dual Monitor Post Mount, Vertical



W5773

42" Post - Triple Monitor Post Mount, Vertical



W5777

15" Post with Dual 15" Extension Arms



W5690

Dual-Post Large Monitor Mount (Supports 42" - 63" Monitors)



W5774

15" Post with 15" Extension Arm



W5775

28-1/2" Post with 15" Extension Arm



W5776

42" Post with Two 15" Extension Arms



W5778

15" Post with Height Adjustable Arm



W5698

28-1/2" Post with VESA Mount (Supports 26" - 45" Displays)



VERSA-TRAK		
MODEL#	DESCRIPTION	WEIGHT
90282	Single-Bay Versa-Trak	4 LBS.
90284	Two-Bay Versa-Trak	7 LBS.
90286	Three-Bay Versa-Trak	10 LBS.

Maximize flexibility by adding Winsted's exclusive Versa-Trak monitor mounting system to any Paramount Credenza.

THE MOST ADVANCED 3D CONSOLE DESIGN SOFTWARE IS HERE!

WELSTM 4

PRODUCT LINES	PARTY CATEGORIES	PARTS
Light-Line Consoles	Refracted Consoles	Height Consoles
Acoustic Consoles	Envision Consoles	LCD Consoles
Hi-Vision Studio Monitor Wall	Spectrum Consoles	Enhance-2
Insular Consoles	Collaboration Tables	Conference Tables
E-Goc Workstations	Multimedia Desks	Digital Desks
Credenzas	System/IS Gray Consoles	Pro Series C Vertical Racks
Security Credenzas	Task Storage Super Credenzas	

DOWNLOAD YOUR **FREE** COPY OF WELS AT: winsted.com/WELS

TEL: 800.447.2257 • WEB: winsted.com • EMAIL: info@winsted.com