

CHEMICAL PROCESSING



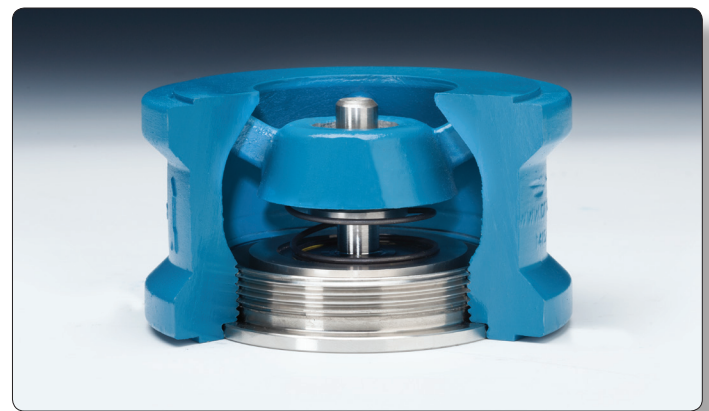
FACILITY:	APPLICATION PROBLEM:	SOLUTION:	SUCCESS SINCE:
Large Chemical Facility Southern, USA	Chemical Cooling Tower Service Water Loop System	DFT® Model ALC® Check Valve 10" 150/300# 316SS/316SS	2012

Challenge:

A large Chemical Facility in the Southern United States, was experiencing extreme water hammer and pressure spikes with their cycling double door check installed in a cooling tower loop pump discharge application. This caused damage to the check valves and also damaged components around the check valves. The 10" double door valves being used at the time, had to be replaced every 6 months due to the cycling.

Solution:

Three - 10", 150/300# ALC Check valves replaced the worn double door check valves eliminating the water hammer and the valves have performed well since installation. The ALC check valves provided improved longevity and have been in place since 2012.



DFT® Model ALC® Wafer Style Check Valve

Features:

- 2" to 24" line size
- ASME class 150 and 300
- RF wafer ends
- API 594 face-to-face dimensions
- Standard Body Materials:
 - A216 WCB carbon steel
 - A351 CF8M stainless steel
- Stainless steel seat, disc & bushing
- Nitronic® 60 stem
- Inconel® X-750 spring
- Center-guided stem
- Spring assisted silent closing, non-slam
- Tight shutoff – lapped disc & seat
- Horizontal or vertical installation
- Protected spring
- Wafer and wafer-lug designs
- Axial Flow
- Nozzle style
- Easy maintenance



Contact DFT for a solution to your problem.