

NATURAL GAS



FACILITY:	APPLICATION PROBLEM:	SOLUTION:	SUCCESS SINCE:
Major Gulf Coast Petrochemical Plant	Natural Gas/Methane OEM Turbo-Expander Vertical Installation	DFT® Model GLC® Check Valve	1999

Challenge:

A Major Gulf Coast Petrochemical Plant was experiencing swing check valve failures. The plant was part of an OEM turbo-expander that originally installed swing check valves. These original valves had failed quickly due to low flow and excessive cycling/pounding. DFT was called to find a solution to their problem.

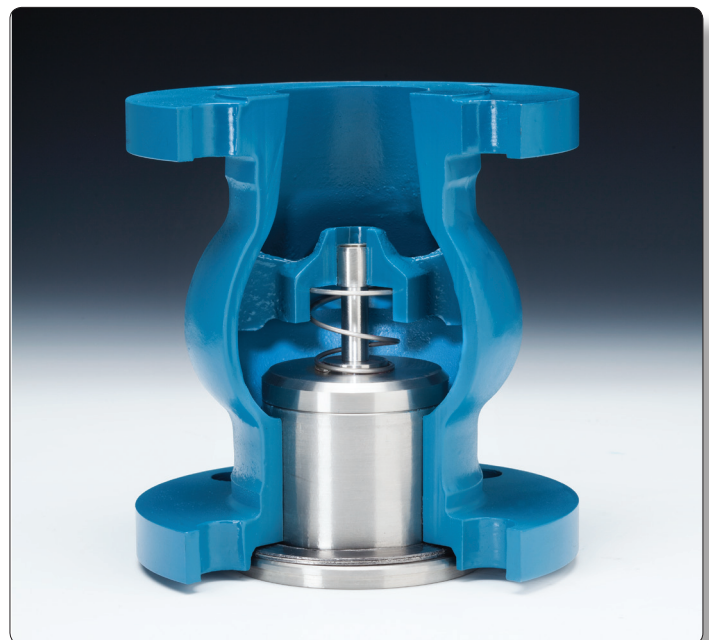
Solution:

The DFT® model GLC® Check Valves were custom-sized for this application to minimize excessive cycling and chattering problems that were seen with the previously installed swing-type check valves.

Installed were 16", 18" and 20" DFT GLCs with a carbon steel body and stainless steel trim.



DFT® Model GLC® Check Valve



Features:

- 2" to 42" line size*
 - ASME class 150 to 2500
 - RF & RTJ flanged ends
 - "Short" face-to-face dimensions
 - Standard Body Materials:
 - A216 WCB carbon steel
 - A351 CF8M stainless steel
 - Stainless steel trim
 - Center-guided/dual-guided stem
 - Spring assisted silent closing, non-slam
 - Tight shutoff – lapped disc & seat
 - Horizontal or vertical installation
 - Protected spring
- * Consult DFT for larger sizes

Contact DFT for a solution to your problem.