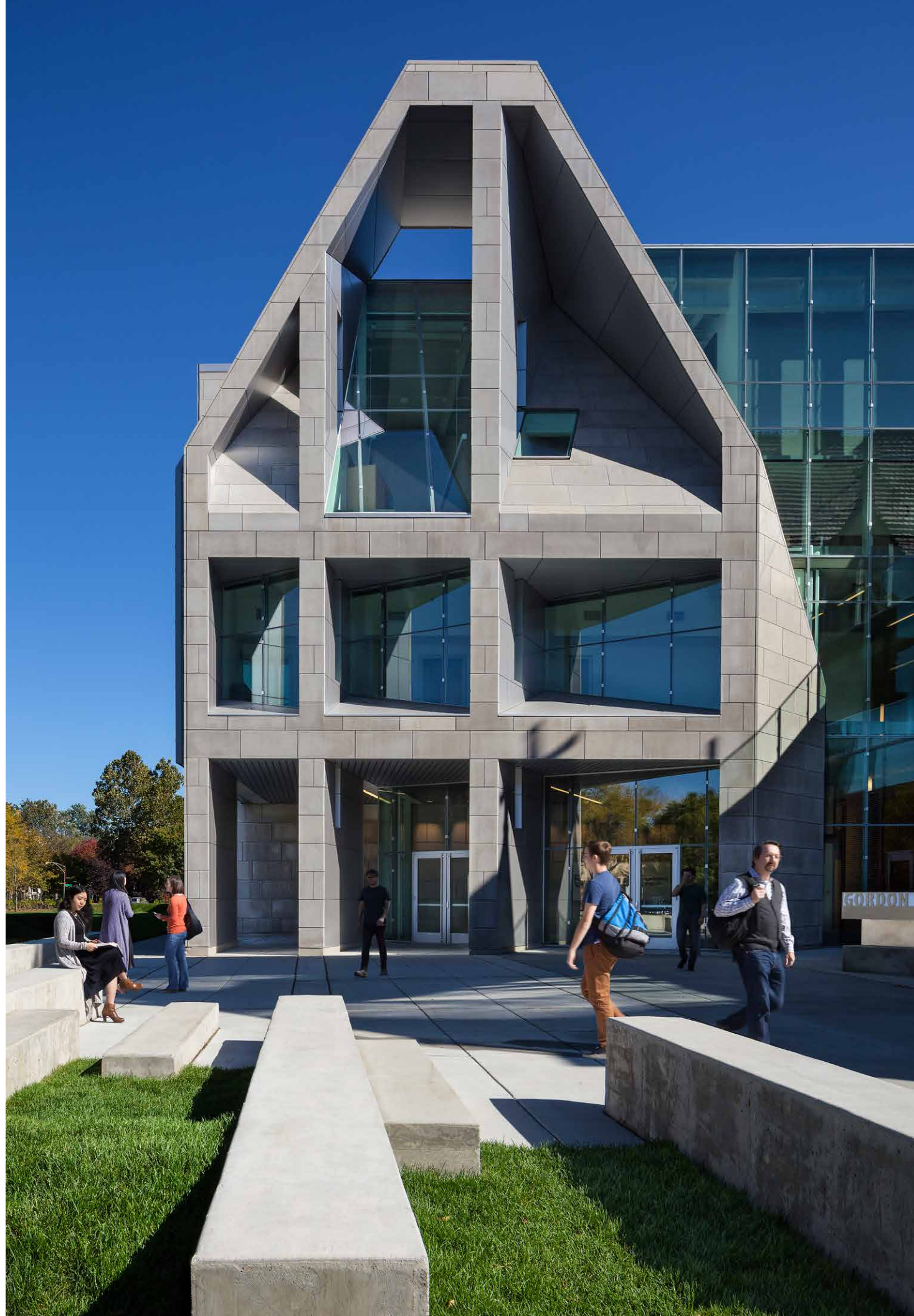


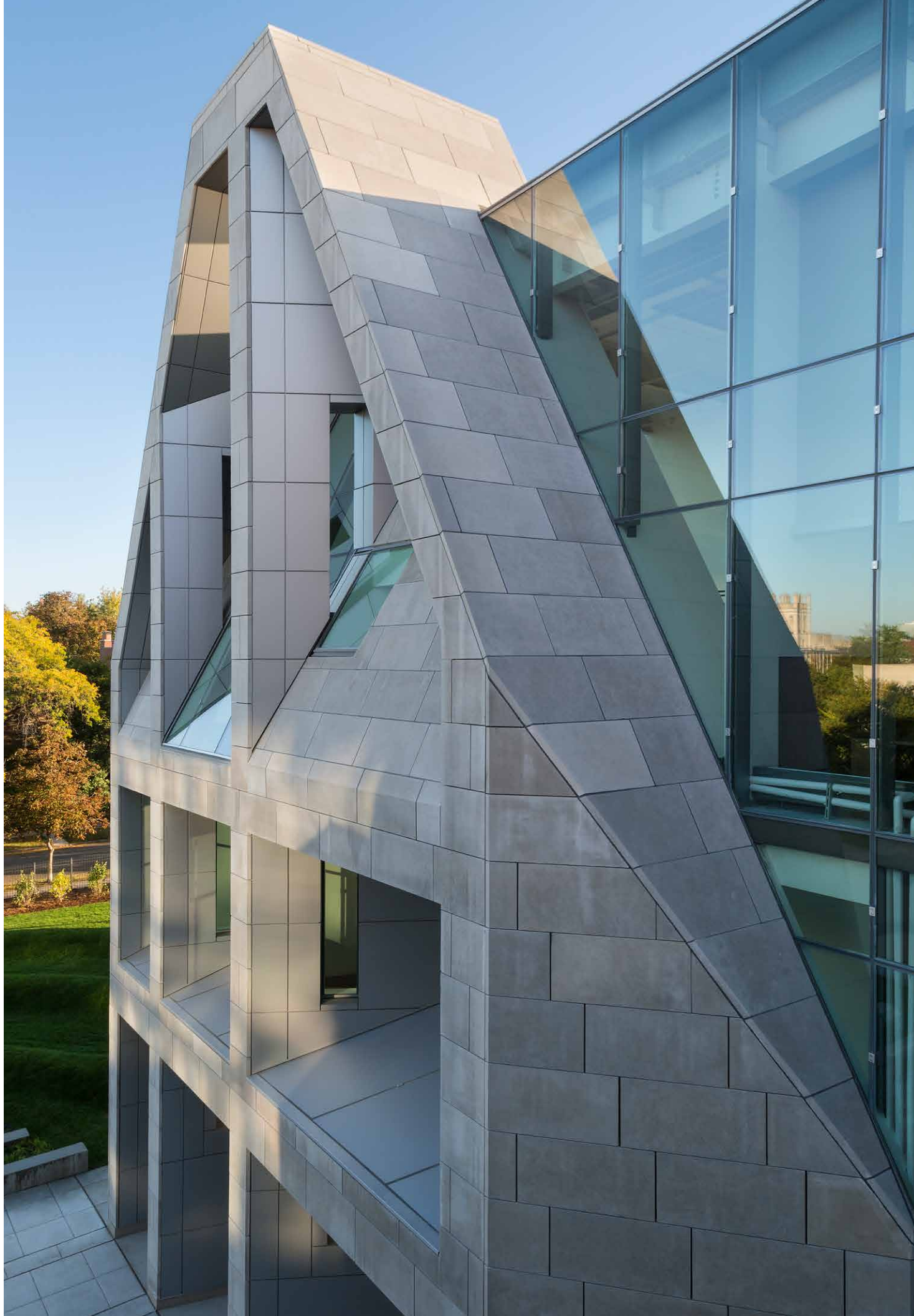
GORDON PARKS ARTS HALL
UNIVERSITY OF CHICAGO LABORATORY SCHOOLS

Valerio Dewalt Train Associates & FGM Architects





The primary entrance façade across a plaza from the west.



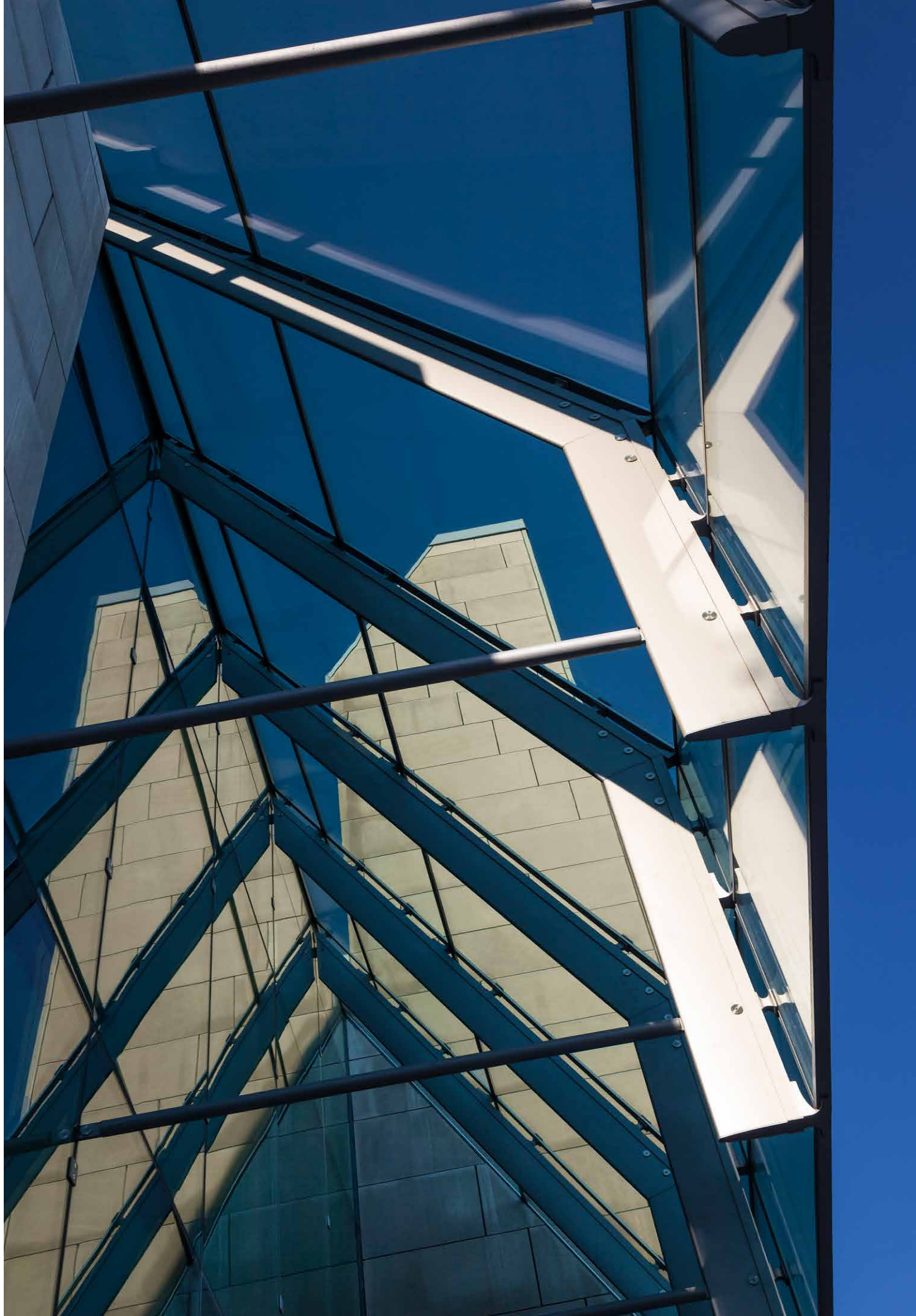
Entrance façade viewed from a bridge that connects new with old.







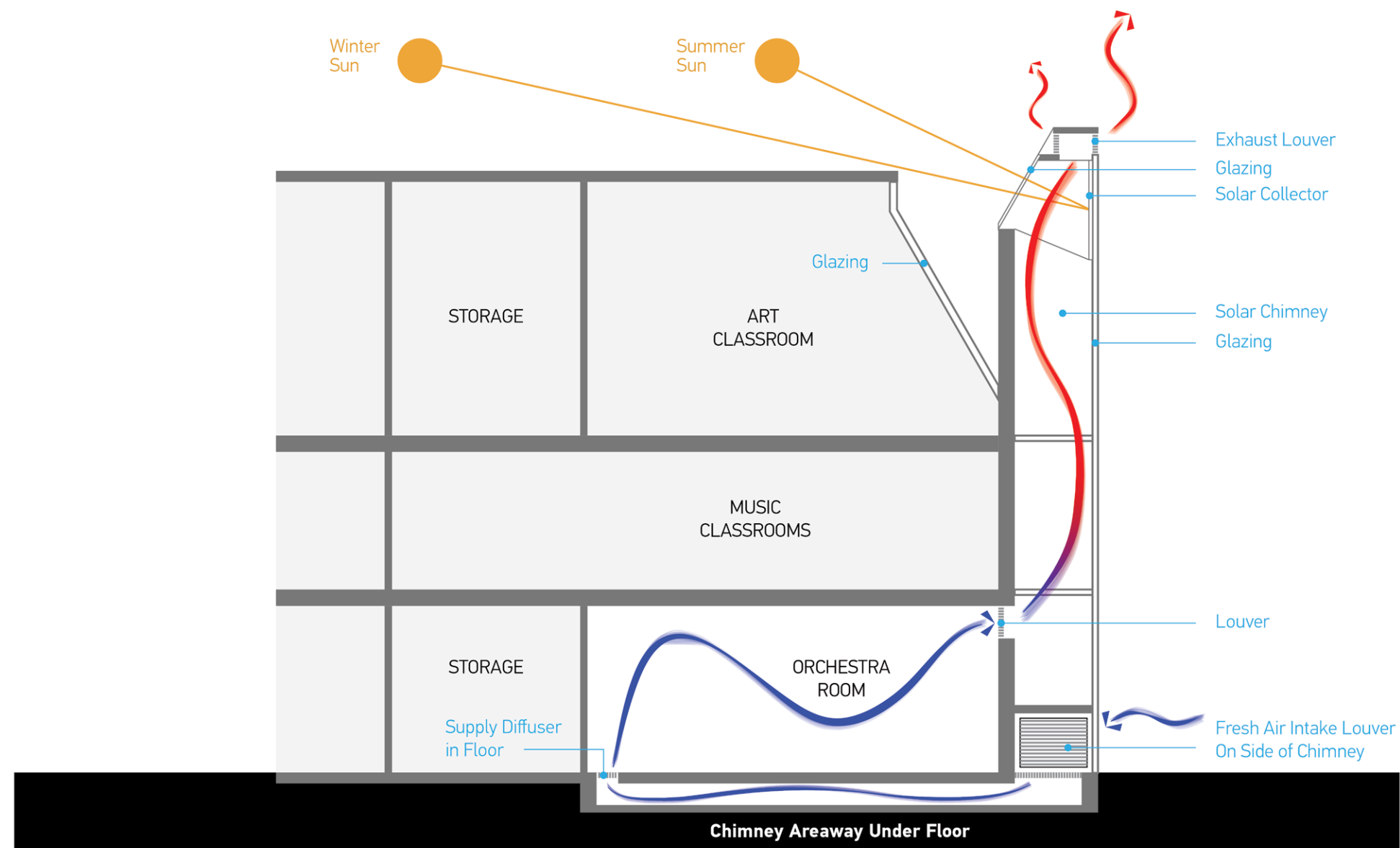






The new façade is in the 21st century with a mirror of historic Belfield Hall.

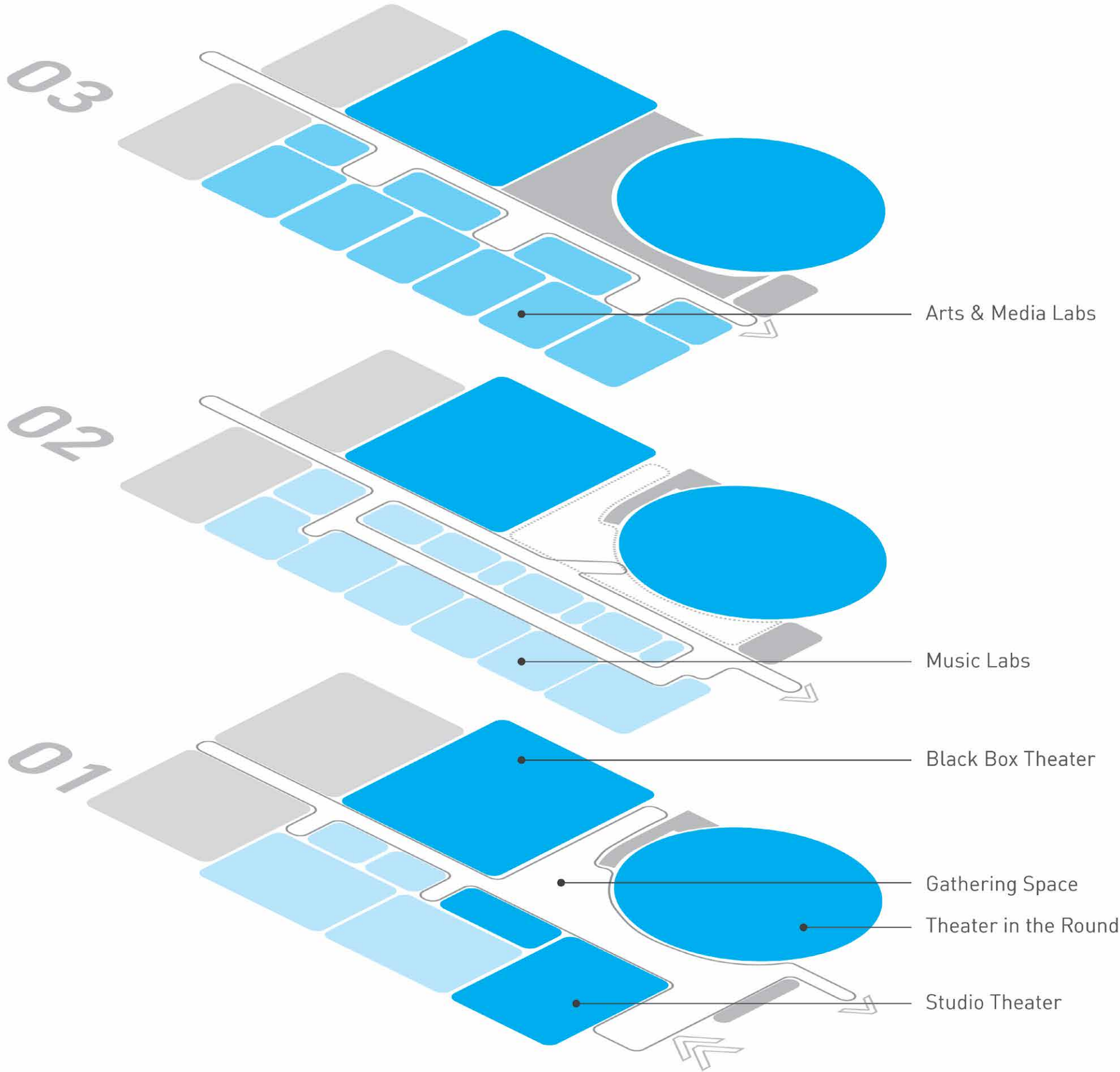




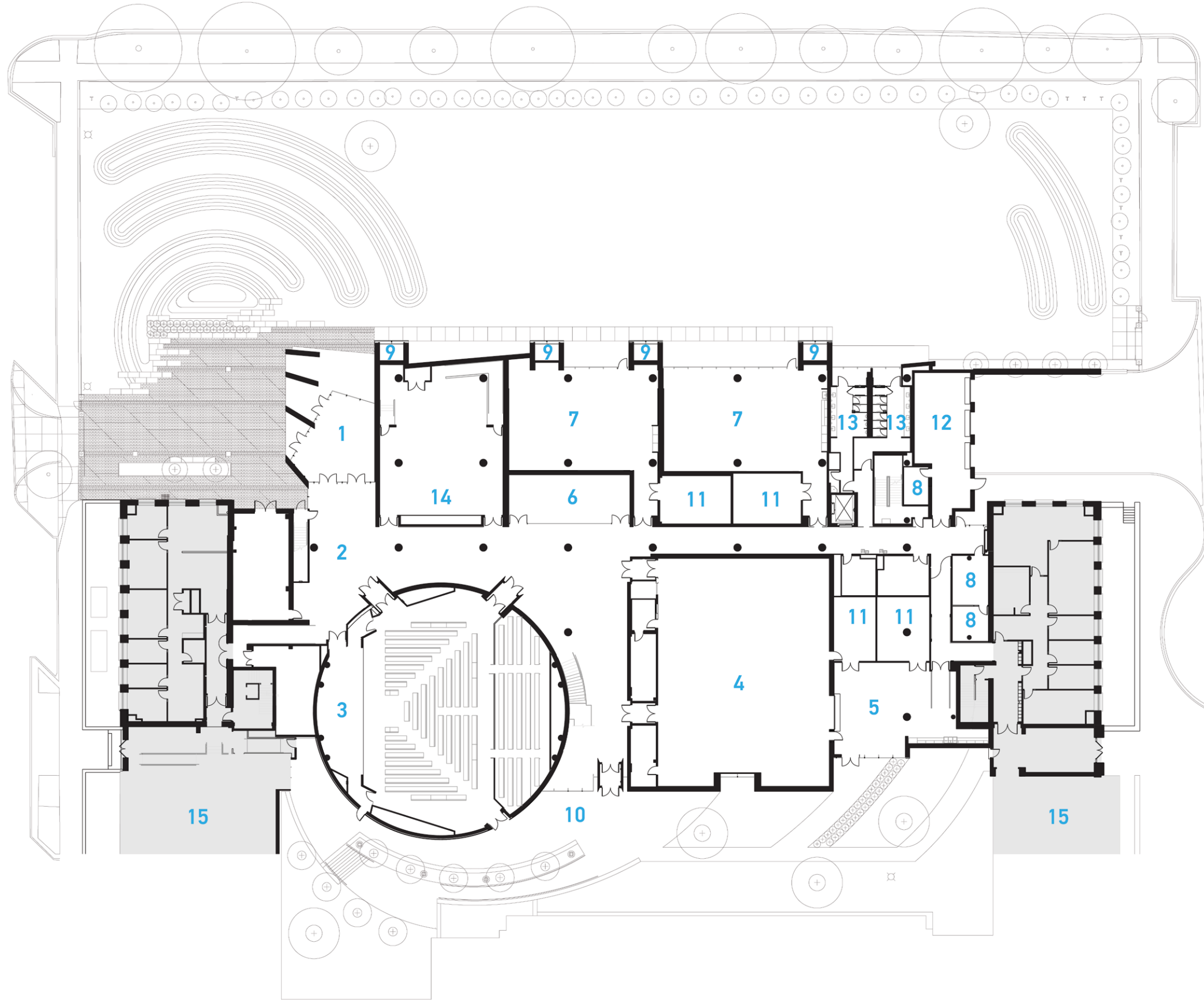
SOLAR CHIMNEY DIAGRAM

PROGRAM DIAGRAM

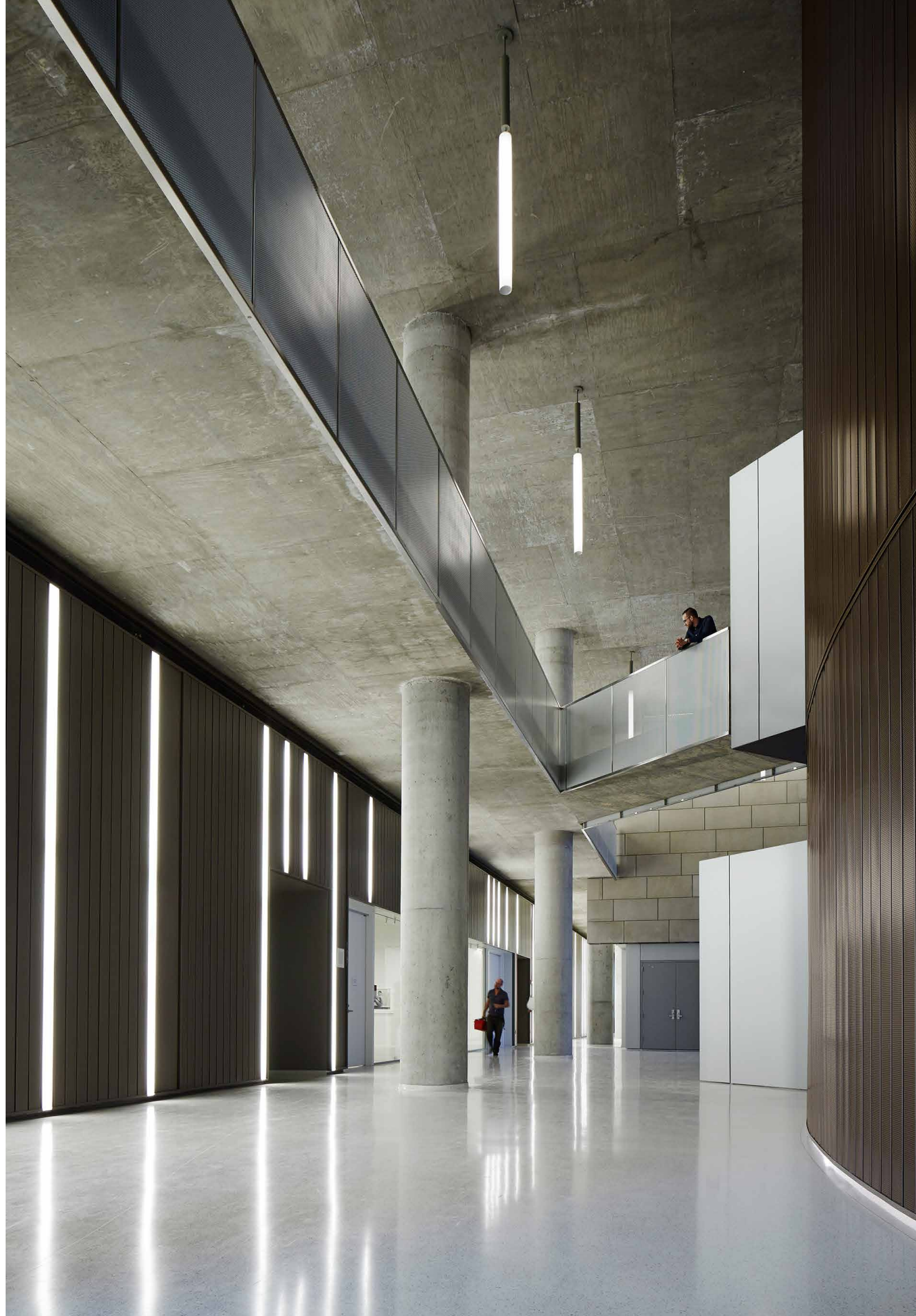
- Performance
- Arts & Media labs
- Music labs
- Stairs
- Service
- Circulation



FLOOR 01

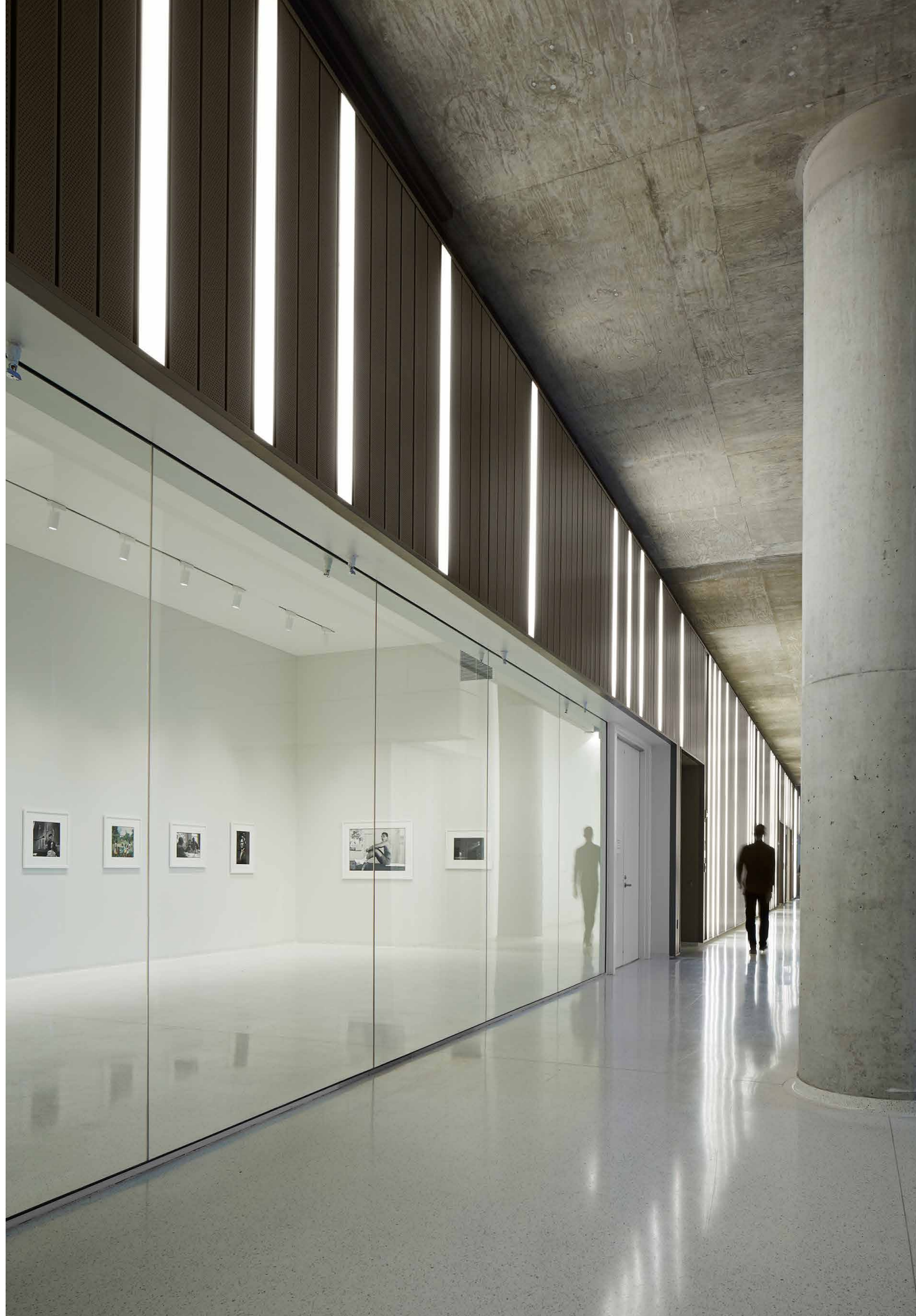


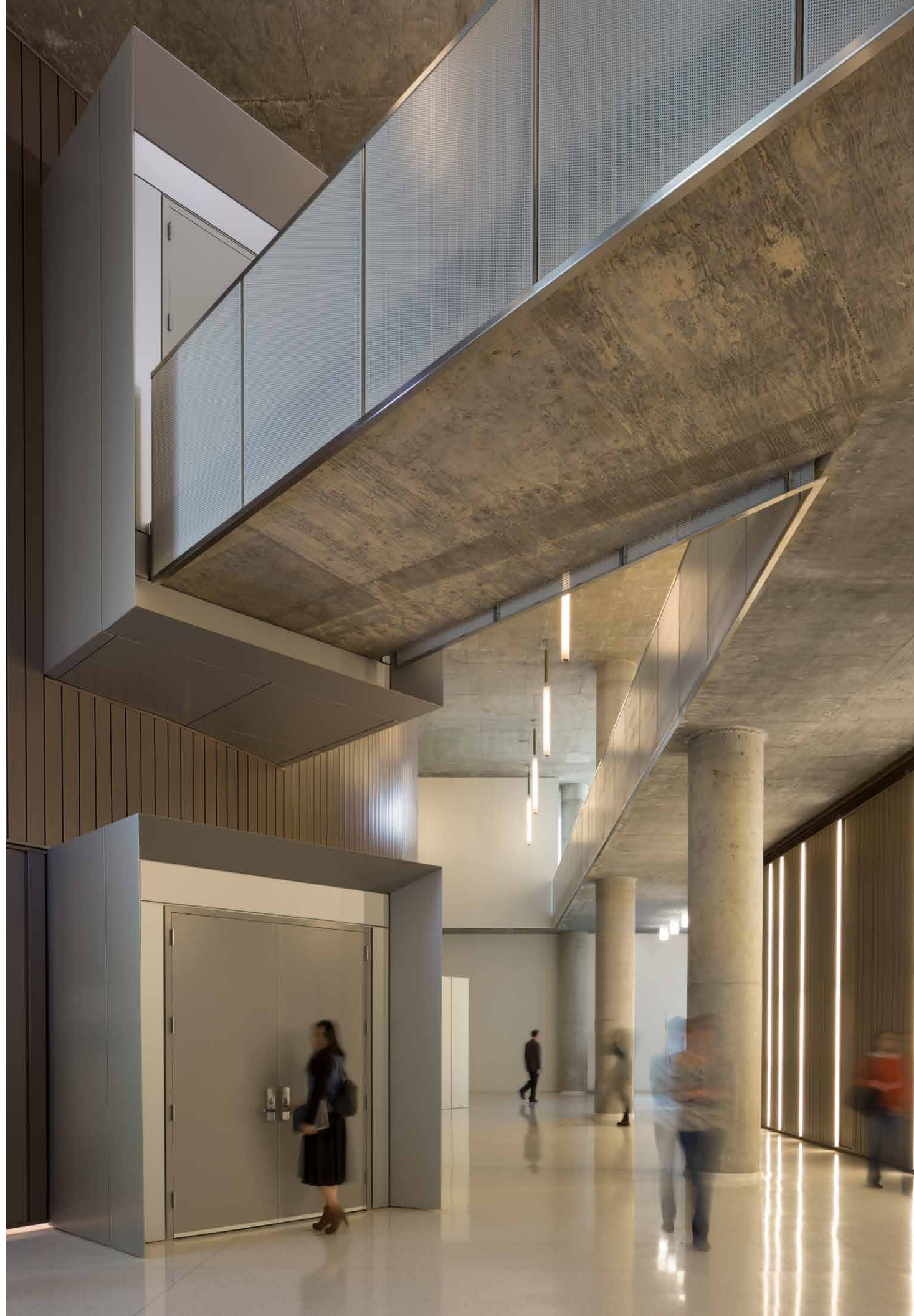
- | | | |
|--------------------------|---------------------------|------------------|
| 1 Entry | 6 Art Gallery | 11 Storage |
| 2 Lobby / Reception | 7 Classroom | 12 Dock |
| 3 Assembly / Performance | 8 Office / Administration | 13 Restroom |
| 4 Black Box Theater | 9 Solar Chimney | 14 Theater |
| 5 Scene Shop | 10 Courtyard | 15 Belfield Hall |



An art gallery opens into the main lobby space.

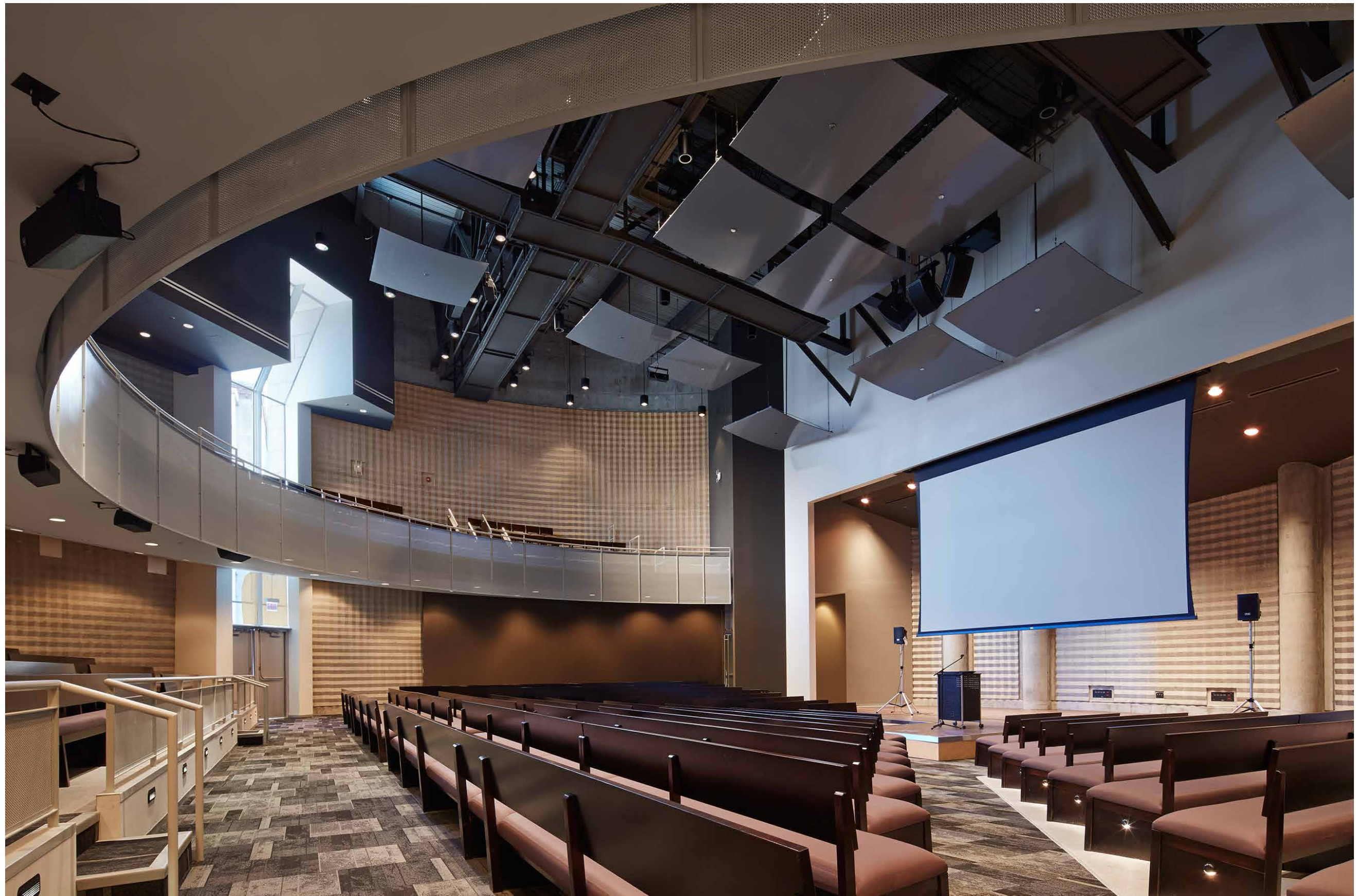


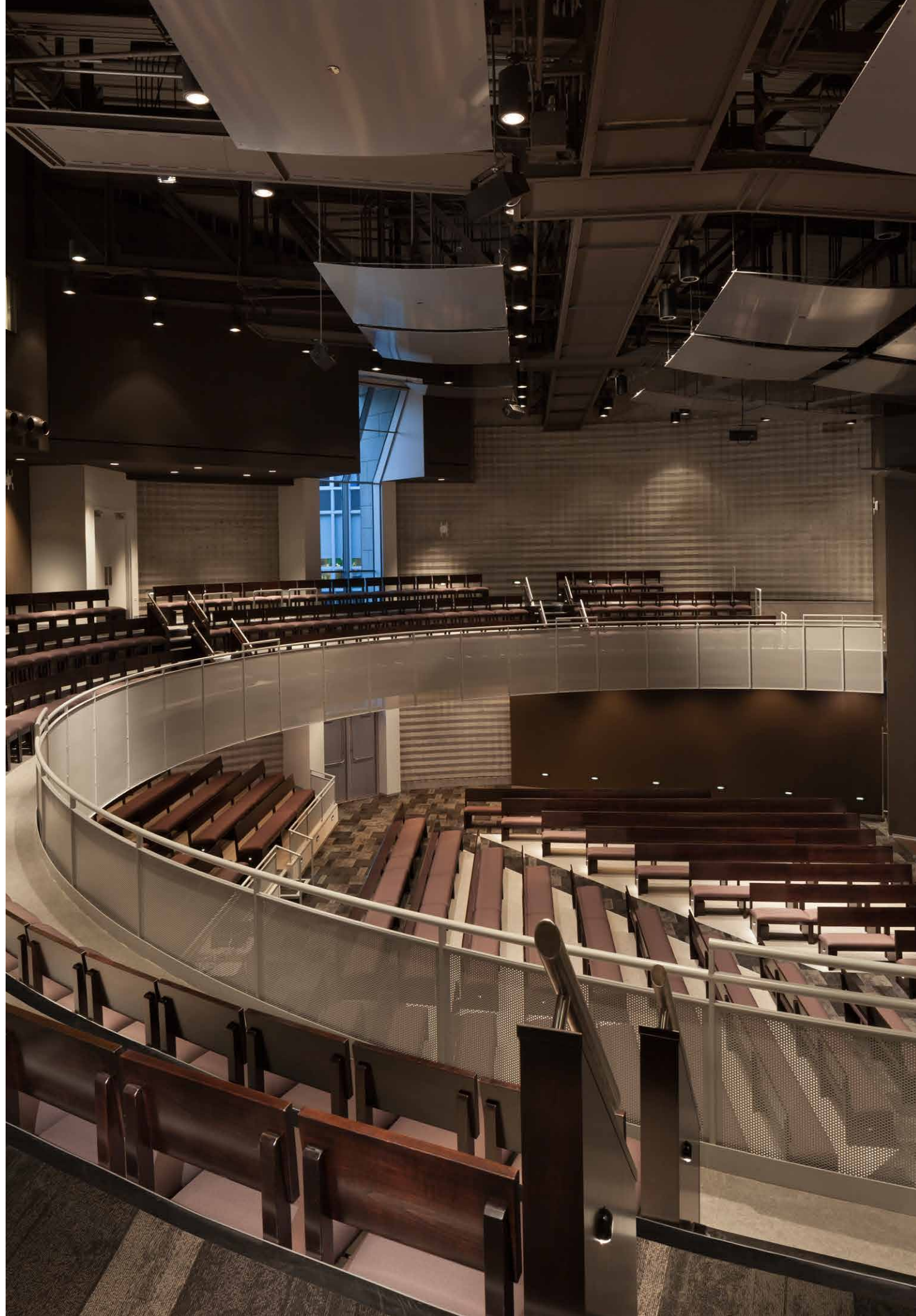


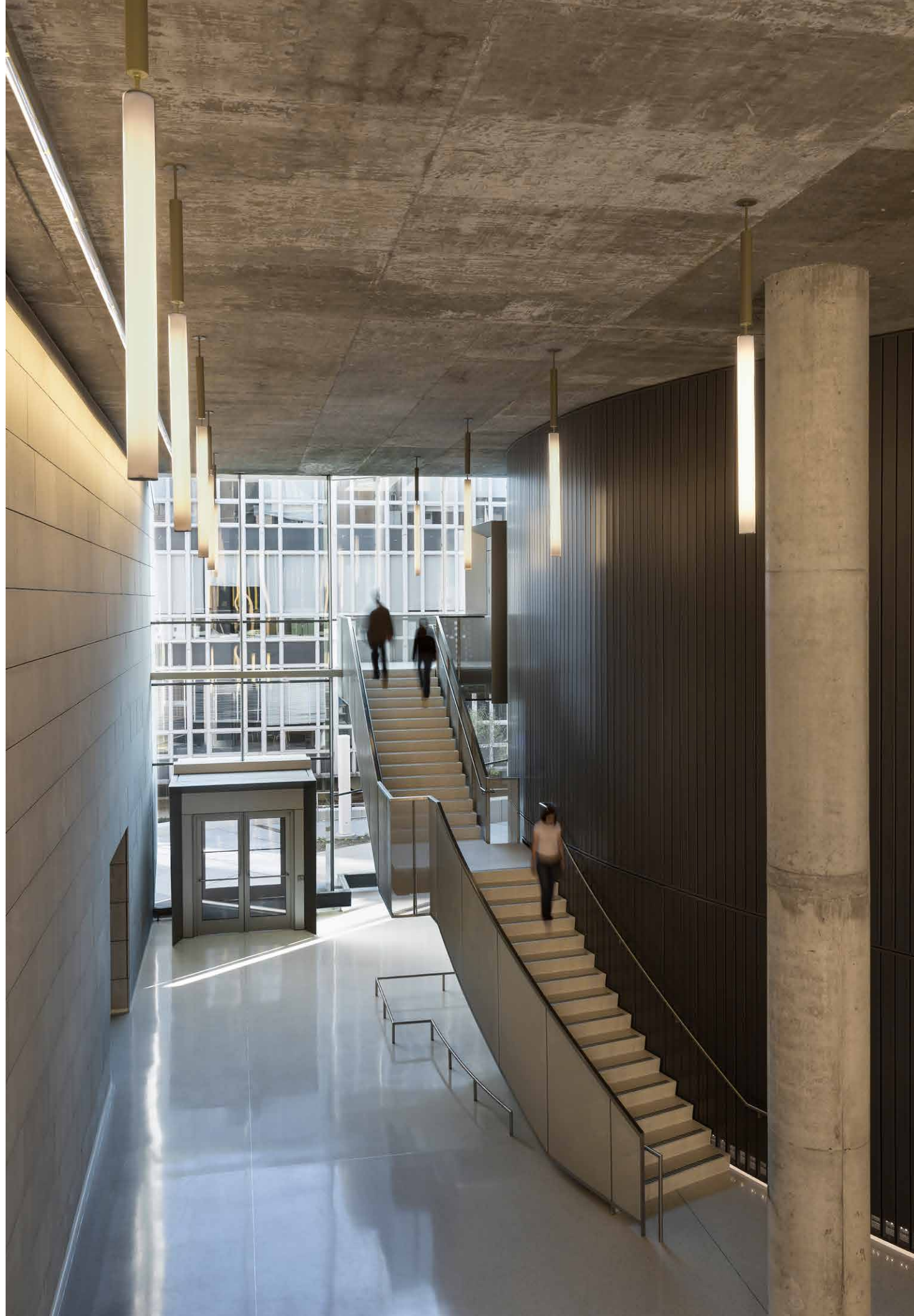


The main lobby space connects primary public functions including a large assembly space. A second story spine connects classrooms with a bridge extended to the upper level of assembly.





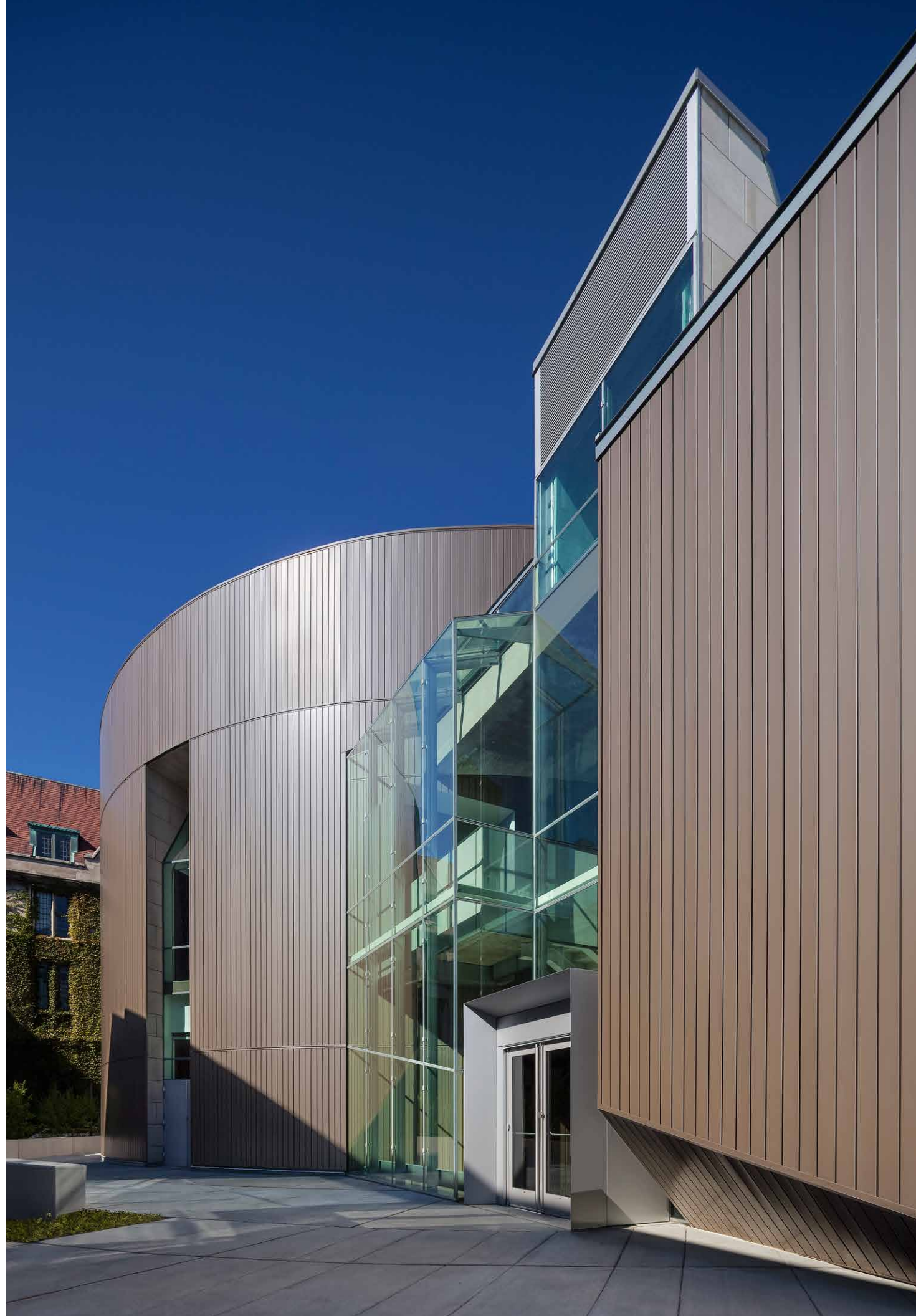




A stairway leads up to the assembly balcony level. The lobby space opens through a large glass wall into the south courtyard.



The south courtyard.



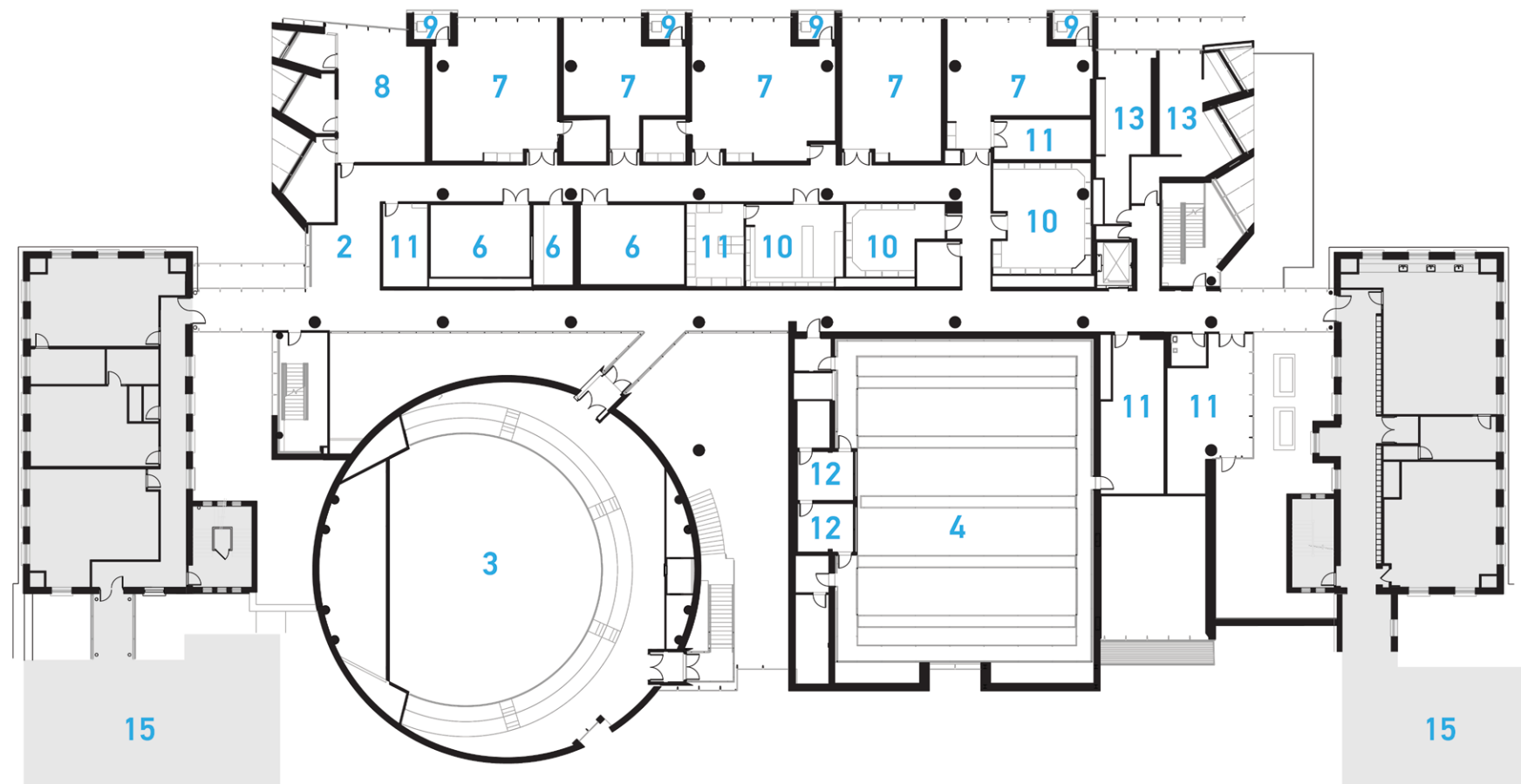
The vertical lines of light extend upward organizing the main circulation spine at the second and third levels of the building.



Ground floor of the assembly space places the entire high school class with a presenter, music, theater and media presentations.

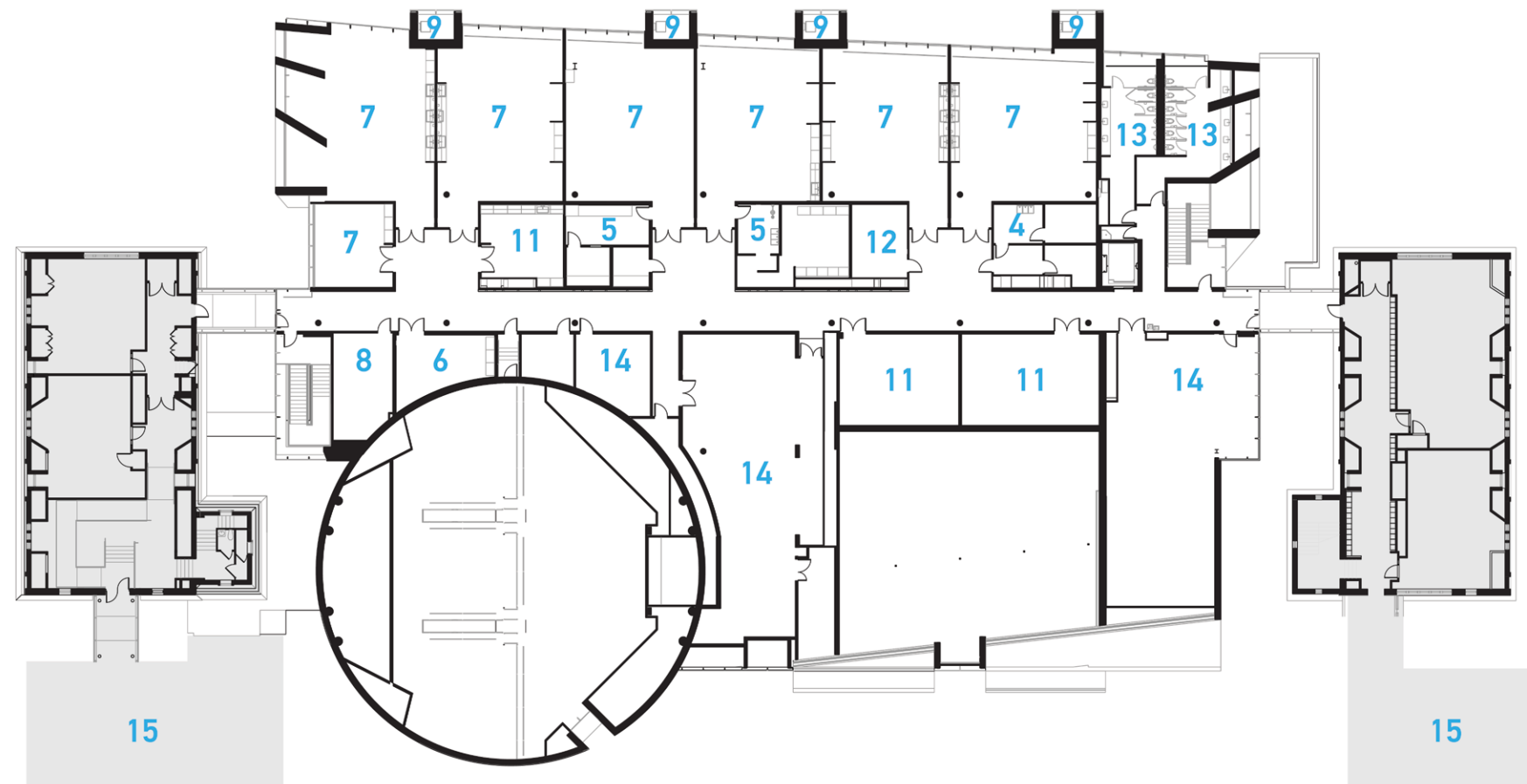
FLOOR 02

- | | | |
|---------------------------|----------------------------|------------------|
| 1 Entry | 6 Recording Studio / Room | 11 Storage |
| 2 Music Lobby / Reception | 7 Music Classroom | 12 Control Room |
| 3 Assembly | 8 Office / Administration | 13 Restroom |
| 4 Black Box Theater | 9 Solar Chimney | 14 MEP |
| 5 Scene Shop | 10 Dressing / Costume Shop | 15 Belfield Hall |



FLOOR 03

- | | | |
|------------------------|---------------------------|-------------------|
| 1 Entry | 6 Kiln Room | 11 Storage |
| 2 Lobby / Reception | 7 Art Studio / Classroom | 12 Digital Server |
| 3 Assembly Room | 8 Office / Administration | 13 Restroom |
| 4 Screen / Audio Room | 9 Solar Chimney | 14 MEP |
| 5 Editing / Developing | 10 Courtyard | 15 Belfield Hall |







The glass wall of the Jazz practice room creates a music shell for musicians.

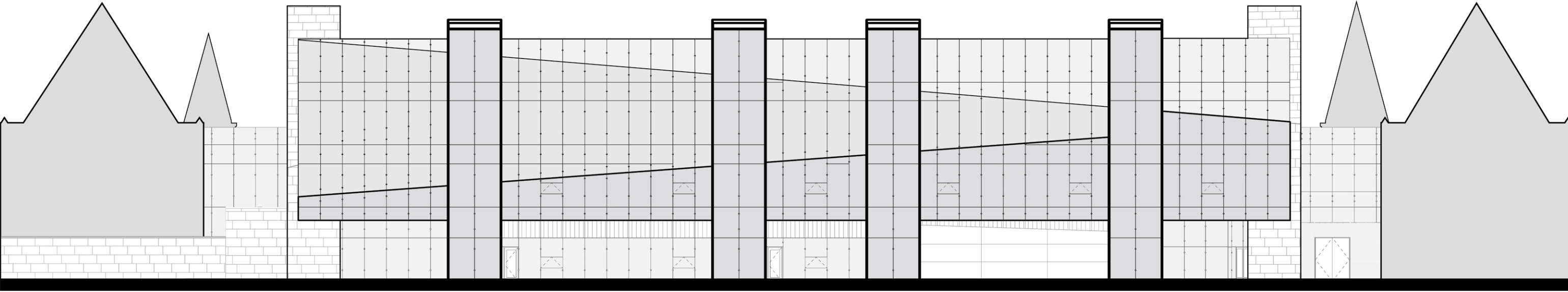


A visual art studio with north facing curtain wall.



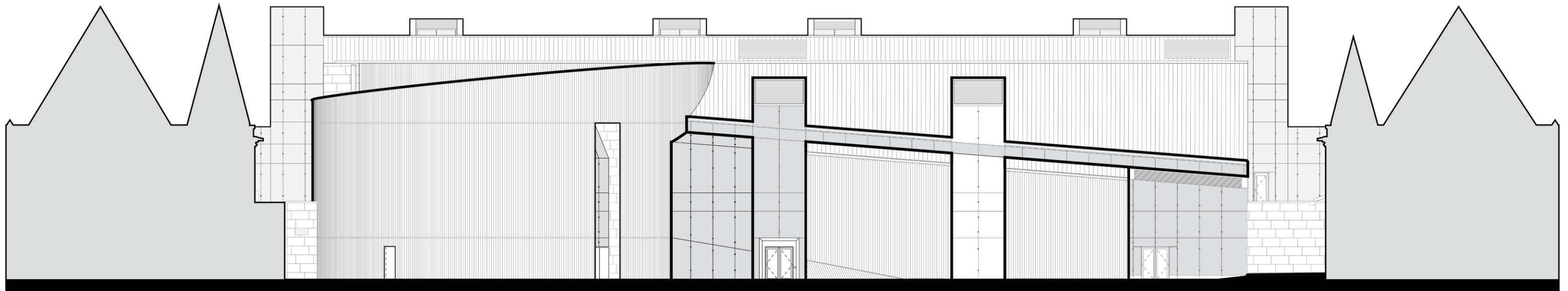


An art studio at the top level looks out and is visible through the main entrance façade.



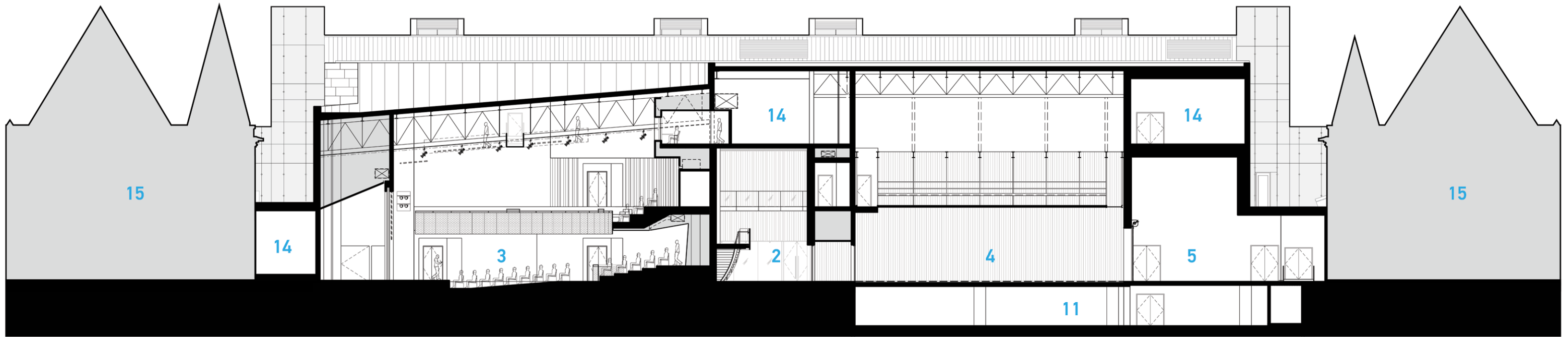
NORTH ELEVATION





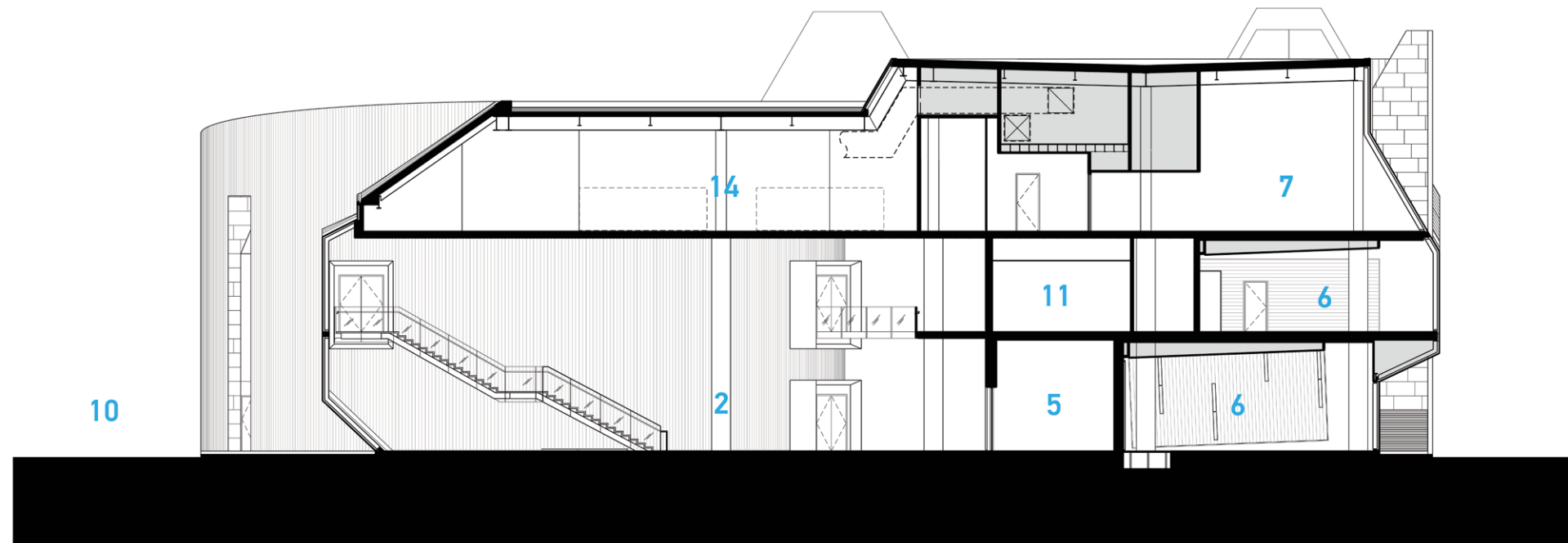
SOUTH ELEVATION





SECTION A

- | | | |
|---------------------|---------------------------|-------------------|
| 1 Entry | 6 Kiln Room | 11 Storage |
| 2 Lobby / Reception | 7 Art Studio / Classroom | 12 Digital Server |
| 3 Assembly | 8 Office / Administration | 13 Restroom |
| 4 Black Box Theater | 9 Solar Chimney | 14 MEP |
| 5 Scene Shop | 10 Courtyard | 15 Belfield Hall |



SECTION B

- | | | |
|-----------------------|---------------------------|-------------------|
| 1 Entry | 6 Music Classroom | 11 Storage |
| 2 Lobby / Reception | 7 Art Studio / Classroom | 12 Digital Server |
| 3 Assembly Room | 8 Office / Administration | 13 Restroom |
| 4 Screen / Audio Room | 9 Solar Chimney | 14 MEP |
| 5 Art Gallery | 10 Courtyard | 15 Belfield Hall |

The Gordon Parks Arts Hall is positioned at the north end of the University of Chicago Laboratory School’s main campus, sited in place of the demolished Belfield Hall single story workshop. The building serves the Middle School and High School Arts program by providing spaces for music and performing arts education and a 750 seat assembly hall. The Arts Hall maintains a connection to the existing East and West Belfield towers through glass enclosed corridors.

The new building faces Scammons Garden to the north and the Lab Schools’ central courtyard to the south. Both are important exterior spaces used for outdoor play, outdoor teaching and are an extension of the Arts Wing Main Lobby gathering space.

The geometry of the design is a modernized extension of the historic Lab Schools’ gothic architecture with Belfield’s angular gabled roof reflected in the angular glass and stone facades of the Arts Wing. Floor to ceiling glass along the north façade wash the interior spaces in natural light, creating a seamless connection between the outdoors and interior. Indiana limestone is used on the exterior to match the existing vernacular, while a glass curtain wall and ribbed metal panels are used to complement the existing building while providing a progressive architectural statement.

The Arts Hall’s four solar chimneys provide verticality and height to the north facing folded glass façade. Extensive green roofs are planted at both the high and low roofs, providing views of natural vegetation from within the Arts Hall and the existing adjacent buildings.

Project Name:	Gordon Parks Arts Hall, University of Chicago Laboratory Schools
Location:	Chicago, Illinois
Completion Date:	Fall 2015
Size:	90,000 SF Arts Hall / 300,000 SF Renovations
LEED:	Targeting LEED Silver
Client:	The University of Chicago
Architect of Record:	FGM Architects
Design Architect:	Valerio Dewalt Train Associates
General Contractor:	Lend Lease
Structural:	Rubinos & Mesia Engineers
MEP/FP:	ARUP
Electrical:	Primera
Sustainability:	HJ Kessler Associates
Photography:	Steve Hall, Hedrich Blessing Barbara Karant, Karant + Associates