

University  
Centre  
Somerset  
**PROSPECTUS**  
**2018/19**



[www.somerset.ac.uk](http://www.somerset.ac.uk)



University  
Centre  
Somerset

Part of Bridgwater & Taunton College

# University Centre Somerset

## WELCOME

### Say hello to your future, today

Welcome to University Centre Somerset, the Higher Education focus for Bridgwater & Taunton College, which is a new institution, created by the merger of two, very well-established Higher Education providers; Bridgwater College and Somerset College.

We currently have over 1,000 Higher Education students enrolled across our three main campuses in Bridgwater, Taunton and Cannington. We offer a wide variety of popular industry-led courses, so whatever your chosen path, you will be sure to join a vibrant community of students all focused on degree-level learning.

We understand that choosing the right education provider can be challenging. We want all our students to succeed and this is why Bridgwater and Taunton College continues to evolve! Our focus is always on your future, which is why we work closely with both local and national employers to shape the education

provision you receive, equipping you with the skills needed for a successful future in industry.

Our highly qualified tutors have worked in industry and bring that experience to the classroom. Tutors also engage in research and personal development to ensure that they are always up to date with the fast pace of industry.

Working with a selection of well-established Universities in the UK to validate our programmes, Bridgwater & Taunton College has absolute confidence in the quality of our teaching and assessment.

All of which means your future is in safe hands. Coming to the University Centre Somerset at Bridgwater & Taunton College is about preparing you for the world of work, and maximising your chances of success when you get there.

So say hello to your future. We're here to help you discover it.

## COME AND SEE US

There is no better way to get a handle on life at University Centre Somerset than coming to visit. We have Open Days throughout the year. Check the website for dates and call us to book your space, and we'll tell you all about the high-quality vocational programmes we provide.

## GET IN TOUCH

To find out more about University Centre Somerset, please visit [www.somerset.ac.uk](http://www.somerset.ac.uk) or call **01823 366366**.

# University Centre Somerset

## CONTENTS

<b>WELCOME</b>	1
<b>CONTENTS</b>	2
<b>REASONS TO STUDY AT UNIVERSITY CENTRE SOMERSET</b>	3
<b>STUDYING AT UNIVERSITY CENTRE SOMERSET</b>	5
<b>A GLIMPSE OF THE FUTURE: WHAT STUDENTS DO NEXT</b>	7
<b>OUR PARTNERS</b>	9
THE OPEN UNIVERSITY (OU)	11
PLYMOUTH UNIVERSITY	13
OXFORD BROOKES UNIVERSITY	15
UNIVERSITY OF THE WEST OF ENGLAND (UWE)	17
NATIONAL COLLEGE FOR NUCLEAR	19
<b>OUR CAMPUSES</b>	21
<b>FANTASTIC FACILITIES</b>	23
<b>A PLACE TO CALL HOME</b>	29
<b>HEART OF THE SOUTH WEST</b>	31
<b>HIGHER EDUCATION COURSE LEVELS EXPLAINED</b>	33
<b>BUSINESS AND COMPUTING</b>	36
<b>CREATIVE ARTS</b>	56
<b>CONSTRUCTION AND THE BUILT ENVIRONMENT</b>	98
<b>ENGINEERING, NUCLEAR AND MOTORSPORT</b>	112
<b>HEALTH, SOCIAL STUDIES AND SPORT</b>	130
<b>LAND-BASED STUDIES</b>	148
<b>PROFESSIONAL COURSES</b>	174
<b>ACCESS TO HIGHER EDUCATION DIPLOMA</b>	193
<b>HOW TO APPLY</b>	195
<b>FEES AND FINANCE</b>	196
<b>WHERE TO FIND US</b>	197
<b>SPORTS ACADEMY</b>	199
<b>INDEX</b>	201

# University Centre Somerset

## REASONS TO STUDY AT UNIVERSITY CENTRE SOMERSET

### University Centre Somerset: a unique place to study

The world of Higher Education is changing. As the cost of degree-level study escalates, undergraduates seek a better return on their investment. They want to pursue courses that yield positive outcomes for their future career, enhancing employability and giving them hands-on experience in the world of work.

That's why University Centre Somerset has been established. We're building on the legacy of Bridgwater College and Somerset College to enact a fresh new model in university education. It's a model that has you at its heart. Because we understand your needs, and know that we're well-placed to meet them.

Building on our enviable heritage in delivering vocational degrees, we're establishing an institution for the future. Our courses are focused on preparing you for the workplace, and we pride ourselves on the quality of our teaching. Here is what you can expect should you choose to put your future in our hands.

### High levels of tutor contact

We offer small class sizes and tutors with a real dedication to the student experience. As a result, you'll have loads of contact with teaching staff, and ample opportunity for discussion and deliberation with your peers. What is more, our inclusive and welcoming atmosphere gives everyone an opportunity to flourish in a supportive environment where diversity is celebrated.

### A long tradition in Higher Education

University Centre Somerset may be a new institution, but we're standing on the shoulders of giants. Somerset College and Bridgwater College have delivered Higher Education for more than two decades, and have a heritage that stretches back to the 19th century. So we're rooted in the past, alive to the opportunities of the present, and focused on the future.

### A degree from a prestigious university partner

We work with the Open University, University of the West of England (UWE), Plymouth University, and Oxford Brookes University to validate our programmes.

We also offer a variety of HNCs and HNDs with Edexcel, as well as professional qualifications with the likes of CIPD, CIM and AAT.

Study with us, and your CV will be enriched by the presence of a big-name institution that is bound to impress.

### Brilliant success rates

It is one thing to start a degree programme, but quite another to see it through to completion. Thanks to our commitment to supporting students, we enjoy completion rates of 96%. Even better, our staff give you the very best opportunity to succeed, by sharing responsibility for your learning while empowering you to find your place in the world.

### Employability

What's the point of studying for a degree if it doesn't enhance your career prospects? At University Centre Somerset, we believe success is measured not only by the results our students achieve. We also want to maximise your chances of securing a job at the end of your course. That is why we provide plentiful opportunities for on-the-job learning, work experience and professional mentoring. Because to us, your future is too important to waste on education that doesn't lead anywhere.

### A vibrant social life

Like any university centre, our three centres are full of life. Whichever one you study at, you'll have ample opportunity to join a variety of clubs and societies, make new friends, and get involved in worthwhile causes. Not only does this make life interesting. It enhances your CV, ensuring you are more attractive than ever to prospective employers.

"The groups are small so the tutors have more time to give you personal attention and get to know you. I feel valued and not just a number amongst thousands of students."

**Katie Jordan**, BA (Hons) Media Make-up

"The course helped me gain confidence and prepared me for interviews. I'd recommend it to anyone wishing to develop themselves and broaden their horizons."

**Kyle Griffiths**, BSc (Hons) Computing & Internet Technologies

"Initially I thought about studying at Plymouth University but realised I could complete this degree in Taunton, save money... be closer to home and have kept my part-time job."

**Emily Corbett**, BA (Hons) Business Administration Top-up

"I work for the council and decided to study in order to improve my technical knowledge of the industry and progress my career."

**Gary Parsons**, HNC Construction & The Build Environment (Civil Engineering)

"The LRC staff are all incredibly helpful and knowledgeable about research and study skills, which are essential when we're writing assignments."

**Sophie Brown**, BA (Hons) Interior Textiles and Surface Design

"I attended an Open Day and was impressed by the course and facilities. Plus I live locally, so it's very convenient."

**Aaron Saturley**, BA (Hons) Early Childhood Studies

"I'm interested in studying the top-up year to complete a BA (Hons) for personal growth and satisfaction, rather than career development."

**Dorothy Radford**, FD Health & Social Care Studies

"The course has not only taught me about child development theory, but also a great deal about myself."

**Sharon Warner**, BA (Hons) Early Childhood Studies

# University Centre Somerset

## STUDYING AT UNIVERSITY CENTRE SOMERSET

Higher Education is a significant investment. So you want to make the very best of it, and pave the way to your future success.

Key to this is the high-quality student support we offer at University Centre Somerset. For us, students are at the very heart of all we do. Our focus is on your flourishing and wellbeing, because that's how you'll be enabled to achieve great things and realise your potential.

### Flexible programmes of study

We know that life is never simple, and that there are always competing demands on your time. That is why we keep our academic programmes flexible, enabling you to study in a way that fits around your other commitments.

University Centre Somerset staff understand that the life of an undergraduate can be pressured, and have extensive experience of dealing with students of all ages. We will support you at every stage of your studies, offering advice and assistance that helps you attain your ambitions.

With a range of part-time options and varied pathways, we can help you navigate a way through your degree programme, while creating space for home life, ongoing employment or other commitments.

### Personal tutors

Every single student at University Centre Somerset is given a personal tutor, who takes a particular interest

in your progress. This is usually a member of teaching staff, who meets students on a regular basis to signpost support services and help set and monitor targets.

### Study skills support

We offer support in a variety of areas including mathematics, English, IT, research skills and time management, as well as specialist support in mental health, the Autistic Spectrum and Specific Learning Difficulties.

You really are never alone when you study at University Centre Somerset. It's that ongoing support that gives you the best possible chance of achieving your goals.

### Financial guidance

Managing your money can be a big challenge if you're doing it for the first time. We have specialist staff who can help you cope financially, as well as advising on student loan applications and tuition fees.

### Advice and Pastoral Care

We're proud of the extensive welfare package on offer at University Centre Somerset. We run regular sexual health clinics and provide pastoral care for all students through our welfare team. So whatever challenges come your way, you'll never face them alone.

### Students' Union

As an undergraduate at a UK educational institution, you will be eligible to join the National Union of Students (NUS). Our own Students' Union is affiliated

to the national body, and exists to represent everyone who studies with us.

Each year the student body elects reps, who serve in a variety of roles to enhance the educational experience we provide. In addition, the Union plays an active part in the University Centre's social life, regularly organising trips and excursions and facilitating events such as barbecues, sports competitions and balls.

If you fancy developing your profile and acquiring important skills in public speaking and democratic representation, you can stand as a Union officer.

### Equality and Diversity

If there's one aspect of our corporate life that University Centre Somerset is especially proud of, it is our commitment to equality and diversity. We are an open and inclusive community, which does not tolerate any form of harassment, discrimination or bullying. We celebrate diversity, and relish the fact that our students come from more than 50 different countries, and range in age from 14 to 100.

A reflection of our culture is our past inclusion by LGB campaigning charity Stonewall in its Top 100 Workplace Equality Index. That is one of our defining marks. It is part of who we are.





## A GLIMPSE OF THE FUTURE: WHAT STUDENTS DO NEXT

Study at University Centre Somerset and a whole world of possibility opens before you. Thanks to our emphasis on employability, our students have gone on to pursue successful careers in a range of fields. And at every turn, they have built upon the rich experience of their degree programme to establish themselves in a competitive jobs market.

University Centre Somerset graduates have secured positions in high-profile organisations including:

- Agent Provocateur
- All Saints
- Arcadia Group
- Amdac Carmichael
- The BBC
- B Studio
- Design Bridge
- Design at Debenhams
- Designers' Guild
- Dreamworks
- Fat Face
- Honda
- Holmes & Marchant
- Howies
- Jigsaw
- Madame Tussauds
- Matsui Babcock
- Ministry of Defence
- The NHS
- The Partners
- Pentagram
- Salt Rock
- Sassi Holford
- Selfridges
- Thales
- Timorous Beasties
- Vivienne Westwood

In addition, many start their own businesses, enter the Civil Service, or pursue further study at top universities throughout the world. For example, graduates have gone on to complete qualifications at Cambridge University, the University of Exeter and the University of Edinburgh.

THALES



JIMMY CHOO

SASSI  
HOLFORD

SAATCHI & SAATCHI

Clarks

BBC

NHS



DANIEL HERSHESON



COBELLA

SAVOY



# University Centre Somerset

## OUR PARTNERS

To ensure the quality of our degree programmes, we work with some of the UK's most prestigious universities. They validate our courses, meaning that students can study in Somerset while receiving qualifications from leading institutions around the country.

Our courses are delivered by talented tutors with extensive professional experience and strong research and teaching skills. They are designed with your future career very much in mind, meaning they have a strong vocational focus in areas such as Business, Art & Design, Computing, Engineering, Health & Social Care, Construction, Management and Land-based industries.



### Using university facilities

The nature of our validation arrangements with partner universities means that our students benefit from access to many of their facilities. In some cases, you can use their Virtual Learning Environments (VLEs) and access a rich variety of online resources, as well as visiting their careers services and utilising student support. Full guidance about the privileges available on your programme will be provided when you enrol.

In addition, University Centre Somerset offers extensive facilities for students at its three centres, with the core of its administrative functions centred on Taunton. We are the university centre for the region, and many students find they have all they need within our provision.

### Quality assured

Like any higher education provider, University Centre Somerset is audited by the Quality Assurance Agency (QAA). This provides an objective measure of our standards, bringing peace of mind about the quality of our teaching and learning.

In its last audits of Bridgwater College and Somerset College, both in 2014, the QAA identified a number of areas of best practice. These include the support we provide students in moving into higher education and then onto the workplace, as well as the close links we have with employers and their engagement in the design of new programmes to meet professional and technical skills needs, and our emphasis on employability.

The findings of both reviews identify the distinguishing feature of University Centre Somerset: our focus on preparing you for the future. Study here, and you'll receive a top-quality education from a leading UK institution, as well as enhancing your career prospects through extensive experience of your chosen professional environment.





## Our university partners

# THE OPEN UNIVERSITY (OU)

If your degree programme is validated by the OU, your primary relationship is with University Centre Somerset. That means you have access to our extensive resources, including the Higher Education library with its collections of printed and electronic resources, including books, e-books, online research databases, journals and referencing tools.

You also have round-the-clock access to our Student Portal, the VLE, containing course information and additional learning resources. When you enrol, you are automatically a member of Bridgwater & Taunton College Students' Union and if you wish, you can join the National Union of Students.

In addition to the facilities provided at University Centre Somerset, the OU offers a range of free online resources to our students, which are listed in the students' guide to studying on a programme validated by The Open University. The guide, along with further information about the OU, can be found at [www.open.ac.uk/ouv](http://www.open.ac.uk/ouv).



### The Open University

Walton Hall  
Milton Keynes, MK7 6AA

0300 303 0075  
[www.open.ac.uk](http://www.open.ac.uk)



## Our university partners

# PLYMOUTH UNIVERSITY

Plymouth University is renowned for high quality, internationally-leading education, research and innovation.

With a mission to Advance Knowledge and Transform Lives, Plymouth is a top 50 research university\* with clusters of world class research across a wide range of disciplines including marine science and engineering, medicine, robotics and psychology. A twice winner of the Queen's Anniversary Prize for Higher Education, the University continues to grow in stature and reputation.

Plymouth has a strong track record for teaching and learning excellence, and has one of the highest numbers of National Teaching Fellows of any UK university.

As a University Centre Somerset student studying on a partnership course with Plymouth University, you are part of a wider community of 15,000 Plymouth students studying off campus at one of 30 partner institutions. As a partner college student, you can access online University services, use its library, electronic resources and learning support materials through its web-based student portal (including information and support from its Careers & Employability Service) and receive vacancies via its job website. As a member of its Students' Union

(UPSU), you can access sports clubs, societies, the advice service, NUS Extra student discount card, volunteering opportunities, student representation and University sports facilities.

### IN PARTNERSHIP WITH PLYMOUTH UNIVERSITY

#### Plymouth University

Drake Circus

Plymouth

Devon, PL4 8AA

+44 (0)1752 585858

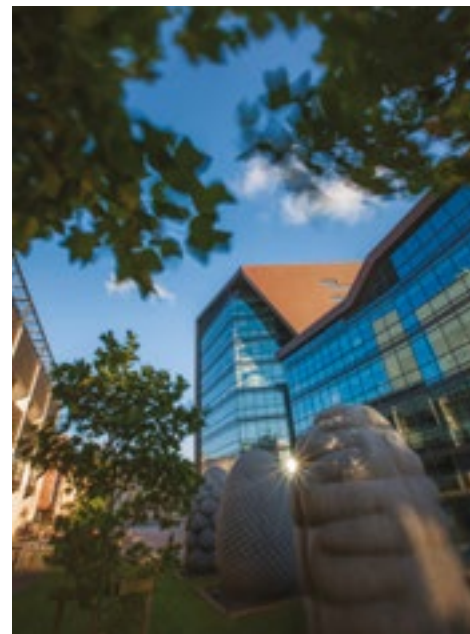
[prospectus@plymouth.ac.uk](mailto:prospectus@plymouth.ac.uk)

[www.plymouth.ac.uk](http://www.plymouth.ac.uk)

[www.facebook.com/plymouthuni](https://www.facebook.com/plymouthuni)

[www.twitter.com/plymuni](https://www.twitter.com/plymuni)

\* Research Fortnight Research Power League Table 2014





## Our university partners

# OXFORD BROOKES UNIVERSITY

Oxford Brookes courses, taught in partnership with University Centre Somerset, suit many people's needs and enable you to study locally for degree-level qualifications.

If you want to study alongside a career, in between family commitments, or simply learn more about a subject you have always been interested in, these courses may be right for you.

You may not need traditional qualifications to get onto a course. Work experience, previous learning and a desire to study all count when your application is considered.

With an Oxford Brookes course you are safe in the knowledge that you are studying for a well-recognised qualification taught to the highest standards expected in higher education.

### HIGH CALIBRE LEARNING AND TEACHING

All Oxford Brookes courses are carefully designed by experienced academics to meet the needs of students. They work in partnership with knowledgeable, industry-informed college teaching staff to ensure delivery of degree-level learning. All are passionate about their subject and making it accessible to others.

Oxford Brookes prides itself on inspiring students to expand the way they think and explore their chosen subject. Many of its academics are internationally recognised trailblazers in their subject area – whether it be in the sciences, humanities, technology or other fields.

### BENEFITS +

When you enrol you become a student of both University Centre Somerset and Oxford Brookes University, and can enjoy the benefits of both. As an Oxford Brookes student you will be able to take advantage of its university resources and services – both online and, if you are able to visit, on campus.

You can enjoy access to the extensive online library and membership of the students union. And, if you visit our campus, facilities such as the sports centre, the social learning spaces, eateries and library in the award-winning John Henry Brookes Building.

**OXFORD  
BROOKES  
UNIVERSITY**

### Oxford Brookes University

Headington Campus  
Oxford, OX3 0BP

01865 741111  
[www.brookes.ac.uk/college](http://www.brookes.ac.uk/college)





## Our university partners

# UNIVERSITY OF THE WEST OF ENGLAND (UWE)

Through our partnership with UWE Bristol, you can choose to do Foundation Degrees in Mechanical Engineering and Mechatronics through the University but be based here at University Centre Somerset.

As a UWE Bristol student studying at the University Centre Somerset, you will benefit from the University's strong links with business and professions, and study a course that's designed to prepare and equip you for going out into the workplace.

Your degree will be quality assured by UWE Bristol, showing employers you have met their high academic standards. On completion of a foundation degree you may also have the opportunity to progress to a full honours degree at UWE Bristol.

UWE Bristol is a large and popular university, with a diverse student population studying a wide range of degrees locally, nationally and even internationally. You will be based at the University Centre Somerset, but you will also be joining the UWE Bristol student body.

You will have access to all of UWE Bristol's facilities, including their large library at the Frenchay Campus, extensive online library resources, social and learning spaces and sports centre. You will also have full access to the Students' Union at UWE Bristol who offer a wide range of support in a new purpose-built building.

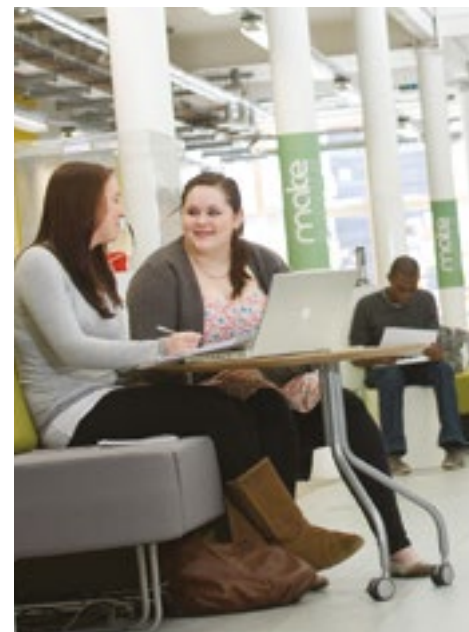


**UWE Bristol** University of the West of England

### University of the West of England

Frenchay Campus  
Coldharbour Lane  
Bristol, BS16 1QY

0117 32 83333  
[www.uwe.ac.uk](http://www.uwe.ac.uk)





## Flagship partner **THE NATIONAL COLLEGE FOR NUCLEAR (NCfN)**

The National College for Nuclear is a partnership between education, industry, national regulators and training providers and is set to revolutionise the way that training for the nuclear sector is delivered.

Set across two hubs (one at the Cannington Campus and one in Cumbria), the College is developing and delivering the UK's nuclear curriculum; designing, developing and delivering industry-trusted, credible qualifications that meet the demand for highly skilled workers in the nuclear sector.

Using cutting-edge technology and virtual reality simulators to replicate the nuclear environment, students are enabled to work on 'live' projects related to nuclear disciplines. The experience they gain from becoming totally immersed in practical assignments like these gives them a far greater understanding of the subject matter than classroom-based learning alone could ever do.

By enabling students to see, do and understand, NCfN produces technical professionals who are already 'up to speed' with industry processes, behaviours and protocols, and therefore highly employable within the sector.

There is a wide range of courses available at the NCfN, from Degrees, Higher Level and Degree Apprenticeships to bespoke training courses.



### **The National College for Nuclear (NCfN)**

Southern Hub  
Bridgwater & Taunton College  
Bath Road, Bridgwater, TA6 4PZ

01278 655111  
[www.ncfn.ac.uk](http://www.ncfn.ac.uk)

# University Centre Somerset

## OUR CAMPUSES

University Centre Somerset is based in state-of-the-art facilities in the county town of Taunton. We also operate specialist learning centres at our sites in Bridgwater and Cannington. Here's a guide to each of our campuses.

### TAUNTON

The home of University Centre Somerset. Our Taunton Campus is a beautiful place to live and study, with plenty of green spaces to inspire your imagination and help you unwind.

Our resources are second to none, with cutting-edge teaching facilities, a well-stocked library and a welcoming common room. Taunton is also the hub for our Students' Union, and provides a central hub for university education in Somerset.

### BRIDGWATER

Our Bridgwater Campus is renowned for its world-class facilities, where industry specialists frequently come to make use of the very latest equipment and technology.

This speaks of one of our distinctive marks: we provide spaces where students get hands-on with the tools of their chosen trade, gaining experience that sets them up perfectly for their future career.

In addition, the Bridgwater Campus offers extensive student facilities, making it an ideal location for work and play.

### CANNINGTON

If you want to work on the land or with animals, it makes sense to train in a real-world environment where you gain practical experience alongside your studies. That is precisely what our Cannington Campus provides, with a working farm and equestrian centre, a cutting-edge animal management facility and its own gardens that are open to the public.

It is also home to our new state-of-the-art National College for Nuclear. Study here and, along with a vibrant social life, you'll gain experience in your chosen field that is hard to rival.





# University Centre Somerset

## FANTASTIC FACILITIES

Whatever you're studying, University Centre Somerset has first-class facilities that enhance your learning and stimulate your development. Many of our training contexts operate commercially, meaning you'll gain hands-on experience in a real-world environment.

### Rodway Farm and Equestrian Centre

Cannington also plays host to our award-winning 180 hectare working farm, which is one of the region's most important dairy units. It has a state-of-the-art computerised milking parlour and an array of agricultural machinery and equipment. Likewise the Equestrian Centre, which includes a BHS riding school along with impressive indoor and outdoor arenas, two large stable blocks and a selection of well-schooled horses. However you see your future, these facilities are the very best in the region, and ensure an educational experience like no other.

### Leisure and tourist attractions

With a 9-hole, 18 tee golf course and its own popular walled gardens and tea room, Cannington provides no end of opportunity for professional development during your degree studies. Not only will you have an opportunity to gain real-life work experience at these facilities as part of your course, but the centres provide a wonderful way to unwind from the pressures of study. It's a similar story with the Activity Centre, where fully-qualified instructors facilitate a range of adventurous activities, and give Outdoor Education students a chance to cut their teeth in a public-facing role.

### Learning Resource Centres (LRCs)

All our centres have large LRCs that are invaluable during your studies. We hold some 30,000 books and more than 3,000 eBooks, as well as stocking journals, newspapers, magazines, DVDs and CDs. Added to the online resources provided by our university partners, you will have everything you need for your studies, with specialist staff on hand to guide your searches.

### IT facilities

Wherever you are at University Centre Somerset, you'll find it easy to stay in touch. We offer free Wi-Fi across our sites, and provide thousands of desktop computers for student use, including Apple Macs and PCs. Classroom learning is complimented by our Virtual Learning Environment, which makes supplementary materials available online, and every student is given their own email account, accessible anywhere, any time.

### Childcare Centres

We provide childcare centres on our Bridgwater and Taunton campuses, meaning you can leave your little ones in safe hands during your time at university. The centres also provide a unique training environment for our students, giving them practical experience of an Early Years setting and enhancing their skills for the future.





University study is a chance to broaden your horizons, collect new experiences, stretch your intellect and develop dispositions that will shape your future. At University Centre Somerset, we believe in the power of education to change lives. So whatever you want to be, we'll help you get there.

At the heart of our fulfilment of this ambition are our fantastic facilities. By giving you the chance to study in the finest surroundings, with access to the very latest specialist equipment for your industry, we enhance your chances of success and give you relevant professional experience from the very start of your studies.

Moreover, by ensuring you have all that you need to make the most of your leisure time and build lifelong friendships, we make your time at university memorable, and profoundly formational.

#### **A social hub**

Whether you study at Taunton, Bridgwater or Cannington, you'll have a local focus for your social life. We provide vibrant common rooms and Students' Union hubs across our centres. These are equipped with Wi-Fi, TVs, computer consoles, and pool tables – giving you ample opportunity to catch up with friends and relax between teaching sessions.

#### **Cafes and shops**

Visit any of our centres and you'll find plenty of places to eat and drink. We operate professional restaurants

along with a variety of coffee bars and cafes. There's even a hair and beauty salon. Which means your every need is catered for, right on the doorstep.

#### **The Energy Skills Centre**

Now more than ever, science and engineering professionals are needed to drive growth in our economy. Thanks to our £8m Centre, we have the perfect environment in which to train. Facilities include engineering and welding workshops with the very latest robotic and Computer-Aided Design software, electronic engineering equipment, and pneumatic/hydraulic laboratory facilities. As our partnerships with EDF Energy, the Nuclear Decommissioning Authority and the National Skills Academy (Nuclear) demonstrate, we deliver education that is thoroughly grounded in the requirements and expectations of 21st century industry.

#### **The Walled Gardens of Cannington**

The Walled Gardens of Cannington are set within the grounds of a medieval priory and many of its fine buildings, including the walls of the garden, remain. They are accredited as a 'quality assured visitor attraction' by VisitEngland, and a Royal Horticultural Society (RHS) recommended garden. The gardens provide a superb facility for students to gain essential hands-on experience of working with a whole range of plant groups.





### Health and Social Care Centre

With a suite of well-equipped labs and modern classrooms utilising the very latest teaching and learning technology, our Health and Social Care Centre is a hub of activity. Students acquire theoretical knowledge and practical skills by working under the supervision of our expert staff. Then they seek to embed their learning through professional placements in a variety of relevant workplace settings.

### Animal Management Centre

Get hands-on with a variety of species at our £2m Animal Management Centre, situated in Cannington. This houses everything from Greater Hairy Armadillos to Gambian Pouched Rats, as well as more every-day creatures including rabbits, sheep and goats. It's a great environment to develop your craft, and offers a learning experience that is without parallel in the South West.

### Sports Facilities

No university environment is complete without its own sports facilities, and University Centre Somerset doesn't disappoint. Across our centres, we provide floodlit sports pitches, including a full-size all-weather pitch, athletics tracks, sports halls, well-equipped

gyms, and tennis courts. In addition, there is ample opportunity to experience more adventurous pastimes in the nearby countryside and on local rivers.

### The McMillan Theatre

Drive onto our Bridgwater Campus and the first thing you'll notice is the eye-catching architecture of our multi-million-pound Performing Arts Centre. If you want to learn how to function as a performer or backstage specialist in a professional theatre, this is the place to do it. With seating for 350 people, the theatre is one of the largest in the local area – making it a hub of activity for all sorts of creative endeavours.

### The Arts House

University Centre Somerset is renowned for the outstanding quality of its education in Art and Design. The Arts House in Taunton is testament to our strength in this field. A state-of-the-art centre in an iconic building, it provides the focus for all arts-based degree programmes. And naturally, it is equipped with the latest hardware and software to help you excel in your chosen medium, as well as an in-house printing unit that is available to all students.





# University Centre Somerset

## A PLACE TO CALL HOME

For many undergraduate students, living away from home is a central part of the university experience. That is why University Centre Somerset offers attractive purpose-built accommodation – providing a welcoming place to live where you can form friendships and stand on your own two feet.

### Taunton

Our Canonsgrove Halls in Taunton are located in beautiful countryside. The commute to our Taunton campus is straightforward, by bus, bicycle or car. Canonsgrove is an intimate community that reflects the diversity of our student body. You'll live in a grouping with six or seven other people, sharing kitchen facilities and benefiting from an en-suite bathroom.

Canonsgrove has a laundrette for residents, as well as a bar, communal lounge, pool table, sports hall, outdoor barbecue area and café. It is overseen by a team of wardens, who ensure a safe and friendly environment where everyone is valued.

### Cannington

Given the nature of their courses, students at Cannington often find it easiest to live on site. We have recently invested £3m in our accommodation here, and have well-equipped single rooms available.

With catered and self-catering rooms available, there is plenty of scope to choose the right option for you. Either way, you'll become part of a vibrant residential community where people share interests, and have an abiding love of the beautiful countryside that is right on the doorstep.

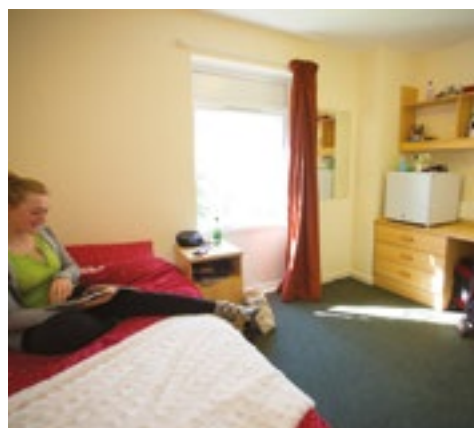
Facilities include free Wi-Fi, communal TV lounges, on-site restaurants and cafés, free on-site parking and a laundrette.

### Living out

For students who live in shared accommodation, or rent a room in a private house, our accommodation office collates a list of suitable estate agents. These are not managed by University Centre Somerset, and students are responsible for agreeing terms with landlords.

### Accommodation costs

Fees vary depending on your choice of accommodation. You should budget up to £125 per week to stay in self-catering halls, based on a 34 week year. Rental fees include all bills and personal possessions insurance. Students living in halls of residence do not pay council tax.





## University Centre Somerset

# HEART OF THE SOUTH WEST

For many, the South West is a place associated with holidays and leisure time. A place of character and charm, of quaint villages and stunning scenery. A place where time passes slowly, and quality of life is enhanced.

All that is true, but the region is also an area of growth, with vibrant local industries including nuclear energy, science and engineering, media and creative industries, and the professional services.

As a result, Somerset is an exciting county to live and study in. It's a place of opportunity and ambition, which hasn't lost its sense of identity in the quest for economic wellbeing.



### Taunton

Our county town, Taunton boasts a fantastic mix of shops, bars and restaurants, and great leisure facilities such as a cinema and bowling alley. It is an attractive town, with a vibrant local culture and great access to wonderful countryside and buzzing cities. Bristol and Exeter are within easy reach, and the famous Glastonbury Festival is just a stone's throw away. Meanwhile, the delights of Exmoor and the Devon, Dorset and Somerset coastlines can be accessed by means of a short hop in the car, or by bus or train.

Sport lovers are also well catered for, with the County Cricket Ground located in the heart of town, and the successful rugby clubs of Exeter, Bath and Bristol all within easy reach.

### Bridgwater

Home to one of the UK's most admired carnivals, Bridgwater is a close-knit community with bags of character. The town hosts a selection of shops and cafés, and provides easy access to cities like Bath,



Wells, Bristol, Exeter and Cardiff. It is just a short hop to the mystical splendour of Glastonbury, while the tranquil Somerset Levels and Quantock Hills are quite literally on the doorstep.

Local sports clubs offer ample opportunity to play rugby, football, netball, hockey, tennis and even skittles. And at every turn, you'll encounter friendly locals with a genuine pride in their University Centre.

### Cannington

Cannington is located in beautiful surroundings in the Quantock Hills, just a short journey from Bridgwater and Taunton. Because of its rural setting, the campus is relatively self-contained, offering plenty of activities to keep students amused.

The biggest appeal is the breath-taking scenery and sense of rural charm. Students at Cannington are usually drawn here by a love of the countryside, its traditions and lifestyle. The centre provides a perfect place in which to deepen that appreciation, and find new ways of enjoying the great outdoors.



# University Centre Somerset

## HIGHER EDUCATION COURSE LEVELS EXPLAINED

Prior to studying a Higher Education course you need to have completed GCSEs (Level 2 courses), and a Level 3 qualification (A Levels, BTEC or an apprenticeship). For adults you could complete an Access Course (Level 3), or in some instances significant and relevant work experience may be an alternative.

### HNC (Higher National Certificate)

An HNC is a Level 4 course that allows you to progress on to an HND course. The HNC is equivalent to the first year of a degree and is usually one year in duration for full-time students.

### Higher Apprenticeship

An apprenticeship is a blend of working and learning. A Higher Apprenticeship is a Level 4 course that allows you to progress on to a Degree Apprenticeship or into full-time employment, and usually takes two years to complete.

### HND (Higher National Diploma)

An HND is a Level 5 course that allows you to progress on to a degree top-up course. It is equivalent to the second year of a degree. This type of course lasts two years, or one year as a top-up to an HNC if you are a full-time student.

### Foundation Degree

A Foundation Degree is a Level 5 course that allows you to progress to a BA (Hons) or BSc (Hons) Top-up Degree or in to employment. A Foundation Degree lasts two years if studied full-time.

### Degree or Undergraduate courses

BA (Hons) and BSc (Hons) are Level 6 courses that allow you to progress on to postgraduate courses such as a Masters (MBA, MSc etc.), or on to employment. These courses take three years to complete for full-time students.

### Degree Apprenticeship

Like Higher Apprenticeships, a Degree Apprenticeship is a blend of working and learning. A Degree Apprentice will graduate with a BA (Hons) or BSc (Hons), depending on the course. It can take anything from four to six years to complete depending on the employer and education partner, but you will be earning while studying.

### Postgraduate qualifications

There are various qualifications you can study after you have graduated from an Honours Degree, including a Masters, an MBA, a PGCE or even a PhD. Some of these can be studied at University Centre Somerset, while for others, you may need to apply elsewhere.

### Professional qualifications

These are usually at higher levels (4/5/6/7) and linked to occupational specialisms, such as teaching, accounting, counselling and management. These courses are often referred to as 'diplomas' but are offered at different levels depending on a student's past experience and qualifications, and could lead to 'chartered' status within specific industries. You will generally study for at least one year, but it could take significantly longer, depending on the course.

### Additional information

With the introduction of the Apprenticeship Levy in April 2017, employers are more inclined to offer apprenticeships at various levels. Higher and degree level apprenticeships are becoming popular and may be an alternative for some students. Please check our website or call for more information on the types of apprenticeships we offer and our employer partners.

MAIN STAGE OF EDUCATION/EMPLOYMENT	LEVEL	QUALIFICATIONS
<ul style="list-style-type: none"> <li>Professional/postgraduate education research</li> <li>Employment</li> </ul>	7	<ul style="list-style-type: none"> <li>Postgraduate and professional qualification</li> </ul>
<ul style="list-style-type: none"> <li>Higher Education advanced level skills</li> </ul>	6	<ul style="list-style-type: none"> <li>Bachelor's Degree</li> <li>Degree Apprenticeship Level 6</li> </ul>
<ul style="list-style-type: none"> <li>Entry to professional graduate employment</li> </ul>	5	<ul style="list-style-type: none"> <li>Foundation Degree</li> <li>Higher Apprenticeship Level 5/HND</li> </ul> <p><i>Equivalent to second year of degree</i></p>
<ul style="list-style-type: none"> <li>Specialised education and training</li> </ul>	4	<ul style="list-style-type: none"> <li>Higher Apprenticeship Level 4/HNC</li> <li>Level 4 Diploma</li> </ul> <p><i>Equivalent to first year of degree</i></p>
<ul style="list-style-type: none"> <li>Qualified/skilled worker</li> <li>Entry to Higher Education</li> <li>Completion of secondary education</li> </ul>	3	<ul style="list-style-type: none"> <li>Level 3 NVQs</li> <li>Level 3 Diplomas/Certificate</li> <li>Advanced Apprenticeship Level 3</li> <li>Access course</li> </ul> <p><i>Equivalent to two/three A levels or four AS Levels</i></p>
<ul style="list-style-type: none"> <li>Progression to skilled employment</li> <li>Continuation of secondary education</li> </ul>	2	<ul style="list-style-type: none"> <li>Level 2 NVQs</li> <li>Level 2 Diploma</li> <li>Apprenticeship Level 2</li> </ul> <p><i>Equivalent to five GCSEs grade A* to C</i></p>



# BUSINESS AND COMPUTING

**Business is a highly competitive environment and we have established an enviable reputation for delivery of our business courses rooted in the real world that assures our students are given the best opportunities.**

All of the teaching team have first-hand experience of business combined with a range of specialist skills. Our business and management curriculum covers an extensive range of subjects relating to various business environments, from health and safety to event management and from accountancy to project management.

The use of the Internet and computer systems has become an integral and critical part of most companies and organisations. Having IT skills will make you an essential part of any work team.

At the Taunton Campus you will have access to the latest IT software and the support of our experienced staff. Our extensive range of programmes covers all aspects of Computing, IT and Gaming, giving you the tools you need to improve your skills and career opportunities.

ALMOST 1,000 GRADUATES IN EMPLOYMENT ARE WORKING AS MARKETING ASSOCIATE PROFESSIONALS.<sup>3</sup>



**346,000** NEW BUSINESS START-UPS IN 2013<sup>2</sup>

UK BUSINESSES HAD A COMBINED TURNOVER OF MORE THAN

**£3,500 BILLION**

AT THE START OF 2014<sup>4</sup>

**£123,530**

POTENTIAL SALARY FOR A SALES DIRECTOR<sup>1</sup>

IN 2014 THERE WERE

**5.2 MILLION** BUSINESSES IN THE UK<sup>2</sup>

<sup>1</sup> EMSI data 2016

<sup>2</sup> ons.gov.uk

<sup>3</sup> www.prospects.ac.uk

<sup>4</sup> www.fsb.org.uk



## BA (Hons) **BUSINESS MANAGEMENT**

### Key Facts

**Duration full-time:** 3 years  
(apply via UCAS)

**Awarding body:**  
The Open University

**Location:** Taunton

### Entry requirements

Applicants require 80 UCAS points at AS/A2 Level (minimum 32 points at A2 Level) or equivalent Edexcel qualification (Extended Diploma – MMP/Diploma – DM), or Pre-degree Access Diploma.

Please see page 195 for our wider entry criteria.

This course is delivered on-site each week across the academic year

### Your course

Enhance your understanding of the world of business with our popular degree. This course provides you with a sound background in all areas of the world of business, providing students with an understanding of organisations, their structure, management and culture within the changing external environment in which they operate. Students will develop an understanding of business functions, their relationship to each other and how these functions contribute to the success of organisations.

### Example modules:

Across the three years you will study a range of topics that may include:

- Introduction to Financial and Management Accounting
- Managing Human Resources
- Mentoring, Training and Development in the Workplace
- Applied Marketing
- Strategic Management and Leadership

We place particular emphasis on research and analysis through project work with external organisations. In addition, a 'learning contract' module enables you to develop an area of research of your choice, and produce a dissertation. You will also have opportunities to develop your skills in information management, prioritising, and interpersonal relationships.

### Teaching & assessment

The course is assessed by means of 80% coursework and 20% tests or exams. Continuous assessment processes mean that individual and group assignments count towards your final grade, as do projects and formal written exams.

### Where does it lead?

On completion of the BA (Hons) programme you may wish to progress at a post-graduate level, for example, a Masters programme at the University Centre Somerset. You may also choose to continue to study for a professional qualification such as those offered by the CIPD, AAT and CIM.

Alternatively you may wish to enter employment – this course opens the door to a variety of jobs in the private or public sectors, specialising in administration, management, personnel, marketing or finance.







## Foundation Degree **BUSINESS MANAGEMENT**

### Key Facts

**Duration full-time:** 2 years  
(apply via UCAS)

**Duration part-time:** 3 years  
(apply to University Centre  
Somerset)

**Awarding body:**  
The Open University

**Location:** Taunton

### Entry requirements

Applicants require 64 UCAS points at AS/A2 Level (minimum 32 points at A2 Level) or equivalent Edexcel qualification (Extended Diploma – MPP/Diploma – MM), or Pre-degree Access Diploma.

Please see page 195 for our wider entry criteria.

This course is delivered on-site each week across the academic year

### Your course

This programme has been designed to equip you with the skills and knowledge base required to work in your chosen specialism, to support entrepreneurial skills or other graduate opportunities. It is also a platform from which you can undertake additional vocational and academic qualifications.

The University Centre Somerset has strong industry links and we have close relationships with employers to ensure our courses prepare our students to be successful in their chosen careers and therefore work-based learning is an integral part of the programme.

### Example modules:

During your course you will cover a range of topics which may include:

- Introduction to Financial and Management Accounting
- Managing Human Resources
- Mentoring, Training and Development in the Workplace
- Applied Marketing
- Current Issues in Management

### Teaching & assessment

The course is assessed by means of 80% coursework and 20% tests or exams. Continuous assessment processes mean that individual and group assignments count towards your final grade, as do projects and formal written exams.

### Where does it lead?

The Foundation Degree is a perfect platform for progression onto the BA (Hons) Top-up Degree Business Management.





## EMILY CORBETT

### BA (Hons) Business Administration : top-up

*Initially I thought about studying at Plymouth University, but realised I could complete this degree in Taunton, save money and be closer to home. I have lectures two days a week so have kept my part-time job in retail, but as the degree has become more demanding, I've had to cut my work hours.*

*I didn't know anyone before starting and I've made a lot of friends. The course is excellent and really interesting, giving me an in-depth insight into the business world. The lecturers are very supportive and make themselves very available. The class sizes are small and there are great facilities. There's a library just for degree students and a lovely restaurant run by catering students.*

*As I currently work for Waitrose, I had planned to work my way up within the company, but now I'm not sure. I'm interested in event management so looking into graduate schemes and thinking about what to do when I finish.*

*I would definitely advise others to study, but they should know that an Honours Degree is far more difficult than a Foundation Degree and expect to have to work hard. Don't let that put you off. It's very rewarding and you get a lot of individual support.*

## BA (Hons) Top-up Degree BUSINESS MANAGEMENT

### Key Facts

**Duration full-time:** 1 year  
(apply via UCAS)

**Awarding body:**  
The Open University

**Location:** Taunton

### Entry requirements

Applicants must have a Foundation Degree, HND or equivalent Level 5 qualification in an appropriate discipline.

Please see page 195 for our wider entry criteria.

This course is delivered on-site each week across the academic year

### Your course

The BA (Hons) top-up offers Foundation Degree graduates the chance to top-up their qualification to Honours Degree. The course follows a modular structure, and takes your learning and skills to a further level.

### Example modules:

During your course you will cover a range of topics which may include:

- Strategic Management and Leadership
- Management of Change
- Strategic Marketing
- Financial Management

### Teaching & assessment

The course is assessed by means of 80% coursework and 20% tests or exams. Continuous assessment processes mean that individual and group assignments count towards your final grade, as do projects and formal written exams.

### Where does it lead?

This course opens the door to a variety of interesting jobs, in a range of industries. You could work in the private or public sectors, specialising in administration, management, personnel, marketing or finance. You may choose to set up your own business, or join a graduate trainee scheme with a national employer. Our graduates have gone on to do all of these things – and more, besides.







### Key Facts

**Duration full-time:** 3 years  
(apply via UCAS)

**Awarding body:**  
The Open University

**Location:** Taunton

### Entry requirements

Applicants require 80 UCAS points at AS/A2 Level (minimum 32 points at A2 Level) or equivalent Edexcel qualification (Extended Diploma – MMP/Diploma – DM), or Pre-degree Access Diploma.

Please see page 195 for our wider entry criteria.

This course is delivered on-site each week across the academic year



## BSc (Hons) COMPUTER GAMES TECHNOLOGY

### Your course

Succeeding in the field of games technology involves a combination of technical aptitude, creative and commercial know-how. That's exactly what our degree programmes are intended to equip you with, meaning that you'll stand every chance of landing your dream job once you graduate from University Centre Somerset.

### Example modules:

During your course you will cover a range of modules and subjects which may include:

- Games Platforms and Technologies
- Games Design and Development
- Games AI
- Advanced Games Programming
- Collaborative Working and Entrepreneurial Skills

In the final year of the Degree you have the chance to work independently on a major games dissertation project that will showcase your theoretical and technical talents as well as creative ingenuity. What's more, the rest of the modules incorporate professional skills training at every stage, helping to enhance your chances of securing employment upon graduation.

### Teaching & assessment

You will be taught and supported by highly experienced and

dedicated lecturers whilst gaining both theoretical and practical experience by utilising our dedicated games technology rooms, software and equipment which continues to grow with industry trends.

A feature of the course is the use of in-course assessment while other modules are assessed by the course teaching team using assignments, case studies and presentations. There is also an assessed compulsory period of work experience as part of the programme, students will take part in an assessed work placement; this exciting opportunity allows students to pursue industry experience in a company or recent professional area of their choice with the support of their supervisors.

### Where does it lead?

You will have a set of skills and competencies, very attractive to employers in the games industry, as a potential Technical Artist or Games Programmer, for example, as well as a wide spectrum of other areas in the creative media sector including mobile device programming, graphics and 3D visualisation.



## JOE HUNTER

### FD Computer Games Technology

*I've worked my way up to study the Foundation Degree, starting at the College on the First Diploma course then progressing to the Level 3 National Diploma in Games Development. I didn't have the grades to start at the level I hoped to, but was offered a place on the Level 2 Diploma and my long road to academic success and a dream career began.*

*I'm really enjoying the Foundation Degree, particularly the final project we're currently working on. We have a few months to design a game and then write our dissertation. I've decided to create an RPG game along the same vein as Diablo.*

*My expectations were exceeded, particularly the IT resources and staff. We have one-to-one tutorials, really interesting lectures to support our own work and access to a dedicated development studio just for degree students.*

*Being at the College for so long, I've met many tutors and lecturers and would definitely recommend studying here. Ultimately I'd like to complete a Masters Degree and become a games developer, maybe for Rockstar Games in London or Blizzard Entertainment abroad.*

### Key Facts

**Duration full-time:** 2 years  
(apply via UCAS)

**Duration part-time:** 3 years  
(apply to University Centre Somerset)

**Awarding body:**  
The Open University

**Location:** Taunton

### Entry requirements

Applicants require 64 UCAS points at AS/A2 Level (minimum 32 points at A2 Level) or equivalent Edexcel qualification (Extended Diploma – MPP/Diploma – MM), or Pre-degree Access Diploma.

Please see page 195 for our wider entry criteria.

This course is delivered on-site each week across the academic year



## Foundation Degree COMPUTER GAMES TECHNOLOGY

### Your course

The Foundation Degree in Computer Games Technology incorporates work based learning as part of the programme in order to offer applicable work experience during your studies. First year students may undertake work experience or a live brief set by industry-specific employers, while the second year includes a live group games technology production project which not only allows students to work in a team, a skill-set crucial in the workplace, but also offers the opportunity to produce innovative deliverables whilst gaining invaluable experience. In the past, students have worked on developing games for partners such as the NHS, Mole Valley Farmers, British Red Cross and Somerset Wildlife.

### Example modules:

During your course you will cover a range of flexible and transferable skills including:

- Games Platforms and Technologies
- Games Design and Development
- Games AI
- Advanced Games Programming

### Teaching & assessment

You will be taught and supported by highly experienced and dedicated lecturers whilst gaining both theoretical and practical

experience by utilising our dedicated games technology rooms, software and equipment which continues to grow with industry trends.

A feature of the course is the use of in-course assessment while other modules are assessed by the course teaching team using assignments, case studies and presentations. There is also an assessed compulsory period of work experience as part of the programme, students will take part in an assessed work placement; this exciting opportunity allows students to pursue industry experience in a company or recent professional area of their choice with the support of their supervisors.

### Where does it lead?

The Foundation Degree is a perfect platform for progression onto the BSc (Hons) Top-up Degree. With a set of highly sought-after skills and competencies, and practical work experience in the games technology industry, your chances of securing employment after graduation are high.





## BSc (Hons) Top-up Degree **COMPUTER GAMES TECHNOLOGY**

### Key Facts

**Duration full-time:** 1 year  
(apply via UCAS)

**Duration part-time:** 2 years  
(apply to University Centre  
Somerset)

**Awarding body:**  
The Open University

**Location:** Taunton

### Entry requirements

Applicants must have a Foundation Degree, HND or equivalent Level 5 qualification in an appropriate discipline including similar or matching modules.

Please see page 195 for our wider entry criteria.

This course is delivered on-site each week across the academic year

### Your course

In the Degree Top-up course students will establish a high degree of expertise in the application, integration and critical evaluation of a range of computer technologies, principles and practices and provide appropriate experience of working on a final major creative project, developing the ability to work independently and with flair in a variety of contexts.

### Example modules:

The BSc (Hons) Top-up follows a modular structure, and takes your learning and skills to a further level. Modules may include:

- Final Major Games Project
- Digital Sound Production
- Computer Games Prototyping
- 3D Graphics Programming
- Collaborative Working and Entrepreneurial skills

### Teaching & assessment

You will be taught and supported by highly experienced and dedicated lecturers whilst gaining both theoretical and practical experience by utilising our dedicated games technology rooms, software and equipment which continues to grow with industry trends.

A feature of the course is the use of in-course assessment while other modules are assessed by the course teaching team using assignments, case studies and presentations.

### Where does it lead?

Graduates have gone on to roles as technical artists or games programmers, as well as a wide spectrum of other jobs in the creative media sector.





## KYLE GRIFFITHS

### BSc (Hons) Computing & Internet Technologies

*I recently graduated and have been working with Iconography in Ilminster, since finishing my studies. I'm really enjoying working at Iconography. It's great to get an understanding of the industry, work as part of a supportive team and be part of the creative process. I found out about the job through the College – my tutor received an email from the company looking for a web developer. Having just finished my course, I needed a junior role to get me started in employment, so I applied and got the job.*

*Iconography is a Somerset-based website design and e-commerce agency, offering design and build solutions along with other supporting services such as e-marketing, hosting, email, support and maintenance.*

*I really enjoyed my time at the College. The course helped me gain confidence and prepared me for interviews. I'd really recommend the University Centre Somerset to anyone wishing to develop themselves and broaden their horizons. I had great support from my tutors and fantastic facilities at my disposal. It was a brilliant experience.*

### Key Facts

**Duration full-time:** 3 years  
(apply via UCAS)

**Awarding body:**  
The Open University

**Location:** Taunton

### Entry requirements

Applicants require 80 UCAS points at AS/A2 Level (minimum 32 points at A2 Level) or equivalent Edexcel qualification (Extended Diploma – MMP/Diploma – DM), or Pre-degree Access Diploma.

Please see page 195 for our wider entry criteria.

This course is delivered on-site each week across the academic year



The Open University

## BSc (Hons) COMPUTING & INTERNET TECHNOLOGIES

### Your course

We are living in one of the most documented, recorded, analysed and inter-connected periods in our history with many aspects of our daily lives now being assisted by increasingly complex computerised technology. From smartphones and smart TVs to corporate servers and big data systems, our economy places great importance on serious computing and programming skills to shape the future of society. Develop skills in computing and Internet technologies and you'll be employable the world over.

Included in our provision is a commitment to developing your professional skills, in order to enhance your employability upon graduation.

### Example modules:

During your course you will cover a range of topics which may include:

- Website Design and Development
- Programming Fundamentals
- E-Business
- Internet Technologies and Security
- Mobile Application Development

### Teaching & assessment

Our specialist teaching staff have hands-on experience of working in computing, and offer expert tuition in labs and classrooms.

Assessment is through a mix of assignments, examinations, reports and presentations. As part of the course, you will be required to undertake projects both in groups and individually.

A prominent feature of the course is the use of in-course assessment, where modules are assessed by the course teaching team as you complete them. The focus of the Degree is the final year dissertation, showcasing your high level computer skills.

### Where does it lead?

As a computing graduate, the world really is your oyster. You will be equipped with a range of computer skills that are all highly desirable to prospective employers. Moreover, you'll have experience of working in real-world environments where adaptability and the ability to handle pressure are essential.

### Additional information

There is an opportunity of gaining a choice of 4 different Oracle industry certifications, including Oracle Database Programming with SQL certification.





### Key Facts

**Duration full-time:** 2 years  
(apply via UCAS)

**Duration part-time:** 3 years  
(apply to University Centre  
Somerset)

**Awarding body:**  
The Open University

**Location:** Taunton

### Entry requirements

Applicants require 64 UCAS points at AS/A2 Level (minimum 32 points at A2 Level) or equivalent Edexcel qualification (Extended Diploma – MPP/Diploma – MM), or Pre-degree Access Diploma.

Please see page 195 for our wider entry criteria.

This course is delivered on-site each week across the academic year



## Foundation Degree COMPUTING & INTERNET TECHNOLOGIES

### Your course

This Foundation Degree will provide a rigorous study of the theory and principles underlying computing and Internet technologies; developing and challenging students by establishing a high degree of expertise in the application, integration and critical evaluation of a range of computer and Internet technologies, principles and practices.

### Example modules:

During your course you will cover a range of topics which may include:

- Website Design and Development
- Programming Fundamentals
- E-Business
- Internet Technologies and Security
- Scripting Technologies and Web Programming

### Teaching & assessment

Our specialist teaching staff have hands-on experience of working in computing, and offer expert tuition in labs and classrooms.

Assessment is through a mix of assignments, examinations, reports and presentations. As part of the course, you will be required to undertake projects both in groups and individually.

A prominent feature of the course is the use of in-course assessment, where modules are assessed by the course teaching team as you complete them.

### Where does it lead?

The Foundation Degree is a perfect platform for progression onto the BSc (Hons) Top-up Degree. You will be equipped with a range of computer skills that are all highly desirable to prospective employers.



## BSc (Hons) Top-up Degree **COMPUTING & INTERNET TECHNOLOGIES**

### Key Facts

**Duration full-time:** 1 year  
(apply via UCAS)

**Duration part-time:** 2 years  
(apply to University Centre  
Somerset)

**Awarding body:**  
The Open University

**Location:** Taunton

### Entry requirements

Applicants must have a Foundation Degree, HND or equivalent Level 5 qualification in an appropriate discipline.

Please see page 195 for our wider entry criteria.

This course is delivered on-site each week across the academic year

### Your course

The BSc (Hons) top-up provides students with the skills and knowledge to enter a range of computing professions, which have seen increased demand for employees at graduate level, and will equip learners with the necessary skills and academic standing to enter postgraduate study.

It also enhances employability of students by providing training with industry-standard software and access to specialised resources such as the Networking Laboratory.

### Example modules:

During your course you will cover a range of topics which may include:

- Relational Databases
- Mobile Application Development
- Advanced Programming
- Mobile Network and Security Management - optional module

### Teaching & assessment

Our specialist teaching staff have hands-on experience of working in computing, and offer expert tuition in labs and classrooms.

Assessment is through a mix of assignments, reports and presentations. As part of the course, you will be required to undertake individual projects.

A prominent feature of the course is the use of in-course assessment, where modules are assessed by the course teaching team as you complete them. The focus of the Degree is the final year dissertation, showcasing your high level computer and academic skills.

### Where does it lead?

As a computing graduate, the world really is your oyster. You will be equipped with a range of computer skills that are all highly desirable to prospective employers. Moreover, you'll have experience of working in real-world environments where adaptability and the ability to handle pressure are essential.





# CREATIVE ARTS

**Our Arts House in Taunton has recently had a £12 million refurbishment and is the envy of the Art Community.**

The majority of our art degrees are based in the Arts House, located at the Taunton Campus and investment has enhanced the facilities to industry standard, offering students a chance to use kit they may not have had access to in the past.

If you're interested in dance or performance The McMillan Theatre, located at the Bridgwater Campus, is our state-of-the-art, multi-million pound Performing Arts Centre and Theatre, which opened in summer 2015.

The new facility, complete with a 350-seat flexible theatre space, will provide Dance students with the opportunity to learn in a stunning theatre environment.



PASSIONATELY CREATIVE AND ORIGINAL, UK DESIGNERS EXCEL AT PROBLEM SOLVING AND ARE VERY BUSINESS AND CLIENT FOCUSED.

**£8.8 million**  
CONTRIBUTED AN HOUR  
TO UK ECONOMY<sup>3</sup>



**15,900** CREATIVE JOBS IN THE WEST OF ENGLAND<sup>5</sup>

**£100 million**



WORTH OF  
ORDERS PLACED  
DURING LONDON  
FASHION WEEK<sup>2</sup>



THE SOUTH WEST IS EMERGING AS  
A HOTSPOT FOR DIGITAL DESIGN<sup>1</sup>

**£37,273**

POTENTIAL SALARY FOR  
A GRAPHIC DESIGNER<sup>4</sup>

<sup>1</sup> The Design Council, 2010

<sup>2</sup> British Fashion Council

<sup>3</sup> Department for Culture, Media & Sport

<sup>4</sup> EMSI data 2016

<sup>5</sup> West of England LEP



## RACHEL DAVIES

### BA (Hons) Fashion Design

*I graduated from the College in 2011 with a First and travelled to Melbourne, Australia, where I worked as a Sales & Marketing Manager for a small, independent footwear label.*

*Working for a small brand means adopting a very broad range of job responsibilities that encompass most aspects of the day-to-day running of the business. My role largely included the final stages of the product distribution and marketing strategies, retail distribution and customer sales.*

*I managed each of their three retail outlets and online web store. I maintained the stores' image through creative visual merchandising and window installations to ensure their physical outlets completely embodied the brand philosophy and successfully drove product sales. I selected and recruited new staff members and implemented all training, issued store rosters and conducted six-monthly training events, delivering sales strategies and results. I closely monitored the sales performance through detailed reporting which gave feedback to the business owner and helped build strategies to move forward and build the brand.*

*Currently I'm taking a short break before starting a new role in allocation and distribution, although my long term plans are to launch my own label once I have permanent residency in Australia.*

### Key Facts

**Duration full-time:** 3 years  
(apply via UCAS)

**Awarding body:**  
The Open University

**Location:** Taunton

### Entry requirements

Applicants require 80 UCAS points at AS/A2 Level (minimum 32 points at A2 Level) or equivalent Edexcel qualification (Extended Diploma – MMP/Diploma – DM), or Pre-degree Access Diploma.

You will be asked to send a digital portfolio prior to interview. For more details please visit the course page on our website.

We run Portfolio Workshops throughout the year to help you prepare for interviews.

Please see page 195 for our wider entry criteria.

This course is delivered on-site each week across the academic year



The Open  
University

## BA (Hons) FASHION DESIGN

### Your course

The catwalk, the models, the shows... the world of fashion is exhilarating, rewarding and hard work. This course can help you be a part of it, by taking you through the design process to produce catwalk-ready collections that showcase your talent and demonstrate your technical ability.

You'll cover everything from designing, garment construction including fashion drawing and illustration, style forecasting and marketing.

### Example modules:

During the course, you will study a range of topics which may include:

- A comprehensive understanding of the technical requirements and aesthetic appeal of materials.
- Explore and manipulate fabric and construction techniques as a means of design expression.
- Develop digital design skills.
- Undertake live industry projects.
- Take up work placements to gain valuable first-hand experience of the fashion industry.
- Enter competitions to raise your profile.
- Consider the wider cultural context to underpin your studio work.
- Focus on your own personal design statement in your final year.

We may offer opportunities for residential trips in the UK and abroad as well as a variety of day trips. Previous cohorts have taken opportunities to embark on study visits to London, New York, Berlin and Paris among others.

### Where does it lead?

We work with a panel of well-respected people from within the fashion and textiles industry to ensure that our course keeps up-to-date with the expectations of the workplace. As a result, students are successful at securing employment upon completion of their studies, and often leave with an enviable profile in their chosen sector.

Recent graduates have gone on to jobs in design, retail management, buying and fashion promotion. They've worked with employers including Courtaulds, Abercrombie and Fitch, Sassi Holford, Fat Face, Debenhams Fashion Design team, Ashley Isham, Miss Selfridge, Next, New Look Design Team, Peacock's buying team and Vivienne Westwood.





## Foundation Degree **FASHION DESIGN**

### Key Facts

**Duration full-time:** 2 years  
(apply via UCAS)

**Duration part-time:** 4 years  
(apply to University Centre Somerset)

**Awarding body:**  
The Open University

**Location:** Taunton

### Entry requirements

Applicants require 64 UCAS points at AS/A2 Level (minimum 32 points at A2 Level) or equivalent Edexcel qualification (Extended Diploma - MPP/Diploma - MM), or Pre-degree Access Diploma.

You will be asked to send a digital portfolio prior to interview. For more details please visit the course page on our website.

We run Portfolio Workshops throughout the year to help you prepare for interviews.

Please see page 195 for our wider entry criteria.

This course is delivered on-site each week across the academic year



### Your course

You'll cover everything from designing, garment construction including fashion drawing and illustration, style forecasting and marketing. What's more, we encourage you to develop your own style right from the outset, meaning you can start carving your niche from the day you arrive in our purpose-built design studio.

### Example modules:

During the course, you will study a range of topics which may include:

- Idea and Materiality.
- Sustainability.
- Critical Reflection.

### Teaching & Assessment:

100% course work, including practical design solutions and written content through an extended essay.

### Where does it lead?

Students are able to top-up their qualification to Honours Degree level at University Centre Somerset. In addition, we work with a panel of well-respected people from within the fashion & textiles industry to ensure that our course keeps up-to-date with the expectations of the workplace; as a result, University Centre Somerset students are highly regarded by employers and often leave having secured employment in their chosen field.



## BA (Hons) Top-up Degree **FASHION DESIGN**

### Key Facts

**Duration full-time:** 1 year  
(apply via UCAS)

**Duration part-time:** 2 years  
(apply to University Centre Somerset)

**Awarding body:**  
The Open University

**Location:** Taunton

### Entry requirements

Applicants must have a Foundation Degree, HND or equivalent Level 5 qualification in an appropriate discipline.

You will be asked to send a digital portfolio prior to interview. For more details please visit the course page on our website.

Please see page 195 for our wider entry criteria.

This course is delivered on-site each week across the academic year



The Open  
University

### Your course

The BA (Hons) top-up follows a modular structure, and takes your learning and skills to a further level. You will consider the wider cultural context to underpin your studio work and focus on your own personal design statement, culminating in your collection being shown at the End of Year Degree Show.

### Example modules:

During the course, you will study a range of topics based around:

- Context.
- Inspiration and Innovation.
- Resolution.

### Teaching & Assessment:

100% course work, including practical design solutions and written content exemplified through a dissertation.

### Where does it lead?

We work with a panel of well-respected people from within the fashion & textiles industry to ensure that our course keeps up-to-date with the expectations of the workplace. As a result, University Centre Somerset students are highly regarded by employers and often leave having secured employment in their chosen field.

Recent graduates have gone on to jobs in design, retail management, buying and fashion promotion. They've worked with employers including Courtaulds, Abercrombie and Fitch, Sassi Holford, Fat Face, Debenhams Fashion Design Team, Ashley Isham, Miss Selfridge, Next, New Look Design Team, Peacock's buying team and Vivienne Westwood. Others have progressed on to a postgraduate level studying an MA or PGCE.





## BA (Hons) **FINE ART**

### Key Facts

**Duration full-time:** 3 years  
(apply via UCAS)

**Awarding body:**  
The Open University

**Location:** Taunton

### Entry requirements

Applicants require 80 UCAS points at AS/A2 Level (minimum 32 points at A2 Level) or equivalent Edexcel qualification (Extended Diploma – MMP/Diploma – DM), or Pre-degree Access Diploma.

You will be asked to send a digital portfolio prior to interview. For more details please visit the course page on our website.

We run Portfolio Workshops throughout the year to help you prepare for interviews.

Please see page 195 for our wider entry criteria.

This course is delivered on-site each week across the academic year



### Your course

The aim of the programme is to provide a challenging and stimulating education through contemporary fine art practice. The practical and theoretical nature of this education enables you to establish an artistic identity and to situate your artistic practice within the wider creative arts industries. We aim to equip you with a range of practical making skills along with the ability to analyse, and critically reflect upon, your visual outcomes.

Projects will include collaboration with peers, outside agencies and galleries and also include self-initiated schemes of work. We recognise the importance of visiting nationally and internationally successful artists to share their practice and experiences with students. Artists such as Alexis Harding, Claire Mitten, Simon Hitchens and Day Bowman have all shared their insights with us.

### Example modules:

During the course you will cover a range of subjects that may include:

- Idea & Materiality
- Sustainability
- Studio practice
- Making Meanings
- Value & Context
- Creativity & Collaboration

### Teaching & assessment

Assessment is by 100% coursework, and we undertake continuous modular assessment. Studio and site-specific projects are a major part of the course, complemented by lectures, seminars and workshops. Students are also assessed by means of a live project or work placement, as well as on curating an exhibition.

### Where does it lead?

Employment opportunities for Fine Art graduates are many and varied, including creative arts practice, arts administration, teaching, curating, and arts therapy. Many of our students establish their own studios as artists or craftspeople, while others progress to a PGCE, MA or MSc in a related discipline.



## Foundation Degree **FINE ART**

### Key Facts

**Duration full-time:** 2 years  
(apply via UCAS)

**Duration part-time:** 4 years  
(apply to University Centre  
Somerset)

**Awarding body:**  
The Open University

**Location:** Taunton

### Entry requirements

Applicants require 64 UCAS points at AS/A2 Level (minimum 32 points at A2 Level) or equivalent Edexcel qualification (Extended Diploma - MPP/Diploma - MM), or Pre-degree Access Diploma.

You will be asked to bring a portfolio to interview. For more details please visit the course page on our website.

Please see page 195 for our wider entry criteria.

This course is delivered on-site each week across the academic year



### Your course

The aim of the Foundation Degree Fine Art programme is to provide a creative and stimulating education through contemporary fine art practice. The practical and theoretical nature of this education enables you to establish an artistic identity and to situate your artistic practice within the wider creative arts industries.

### Example modules:

During the course you will cover a range of subjects that may include:

- Idea & Materiality
- Studio practice
- Making Meanings
- Creativity & Collaboration
- Portfolio/Professional Practice

### Teaching & assessment

Assessment is by 100% coursework, and we undertake continuous modular assessment. Studio and site-specific projects are a major part of the course, complemented by lectures, seminars and workshops. Students are also assessed by means of a live project or work placement, as well as on curating an exhibition.

### Where does it lead?

This course is a good basis from which to continue your studies with the BA (Hons) Fine Art top-up year or progress your own professional creative practice.





## BA (Hons) Top-up Degree **FINE ART**

### Key Facts

**Duration full-time:** 1 year  
(apply via UCAS)

**Duration part-time:** 2 years  
(apply to University Centre  
Somerset)

**Awarding body:**  
The Open University

**Location:** Taunton

### Entry requirements

Applicants must have a Foundation Degree, HND or equivalent Level 5 qualification in an appropriate discipline.

You will be asked to bring a portfolio to interview. For more details please visit the course page on our website.

Please see page 195 for our wider entry criteria.

This course is delivered on-site each week across the academic year

### Your course

Our programme of study is designed to promote and develop inventiveness, improvisational skill and the questioning of established practices. Equipped with professional skills along with many transferable skills, the graduating fine art student takes with them the ability to adapt creatively, think laterally, and to problem solve.

### Example modules:

During the course you will cover a range of subjects based around:

- Context
- Inspiration and Innovation
- Resolution

### Teaching & assessment

Assessment is by 100% coursework, and we undertake continuous modular assessment. Studio and site-specific projects are a major part of the course, complemented by lectures, seminars and workshops. Students are also assessed on the final exhibition at the end of the year.

### Where does it lead?

Employment opportunities for Fine Art graduates are many and varied, including creative arts practice, arts administration, teaching, curating, and art direction. Many of our students establish their own studios as artists, while others progress to a postgraduate qualification in a related discipline.



The Open  
University



## Foundation Diploma **ART & DESIGN**

### Key Facts

**Duration full-time:** 1 year  
(apply to University Centre Somerset)

**Awarding body:**  
University of Arts London

**Location:** Taunton

### Entry requirements

You need a minimum of:

- A pass in one A Level or a twelve unit AVCE, ideally in an arts subject
- Equivalent Level 3 BTEC National Diploma

Prior experiential learning can be demonstrated to be equivalent to formal qualifications otherwise required in certain circumstances.

You will be asked to send a digital portfolio prior to interview. For more details please visit the course page on our website.

We run Portfolio Workshops throughout the year to help you prepare for interviews.

Please see page 195 for our wider entry criteria.

# ual:

### Your course

Our Diploma in Foundation Studies gives you the chance to experience a wide range of art and design disciplines, while helping you build a portfolio for your application to an undergraduate course. The qualification is the perfect preparation for higher study or a more responsible role in the industry, providing you with a nationally recognised qualification.

By encouraging you to adopt an experimental approach to your learning, we help you to develop your individual skills and determine your future direction as an artist or designer. This is a gradual process, over three terms, during which you will have a chance to specialise in areas such as fine art, fashion, lens-based media, illustration, media make-up, graphic design, 3D, interior or architectural design and textile design.

### Teaching & assessment

The curriculum is delivered through a blend of projects and workshops, designed to help you develop the skills that most interest you, in an environment that is professional and focused on achieving success. The course is studio-based and involves continuous assessment and external moderation. Student progress is monitored by tutorials and group critiques. You will have the opportunity to take part in a work placement.

We offer opportunities for residential trips in the UK and abroad as well as a variety of day trips. Previous cohorts have taken opportunities to embark on study visits to London, New York, Berlin and Paris among others.

### Where does it lead?

This course carries UCAS points, meaning you can count it towards entry on a degree-level programme. Added to the high-quality portfolio of work you'll have developed during your time with us, you will be perfectly placed to progress to a degree course, either at University Centre Somerset or further afield, or try to find employment. Either way, we'll give you all the help you need to pursue your ambitions.





## LOUISE GILLARD

### BA (Hons) Graphic Media & Communication : top-up

*When I started the foundation degree I knew I wanted to do something 'artsy' but wasn't sure which direction to go in. The first year allowed me to try a range of disciplines and I found I loved graphic design.*

*I chose the College for several reasons. I'm terrified of cities so studying so close to the countryside really suits me. The course offers more one-to-one tutorials than other uni's and the classes are small so it's a close-knit community. I'm friendly with everyone on the course, which means we bounce ideas off each other and have a lot of fun. I imagine at big universities you attend lectures where you're talked at, but here there is more interaction between the teaching staff and students, which suits my learning style.*

*At College the lecturers and technical advisors are always available to help. We also have lectures on subjects such as 3DSMax to help us with 3D modelling, which is mind-blowing. We have great new workshops in the newly refurbished Arts House with fantastic facilities and huge windows allowing natural light to flood our work areas.*

*I often pop-in to College to use the library to research, read and get my work done. It's great to have everything at your fingertips. When I complete my third year I hope to go straight into work as a junior designer and possibly have my own company in the future.*

### Key Facts

**Duration full-time:** 3 years  
(apply via UCAS)

**Awarding body:**  
The Open University

**Location:** Taunton

### Entry requirements

Applicants require 80 UCAS points at AS/A2 Level (minimum 32 points at A2 Level) or equivalent Edexcel qualification (Extended Diploma – MMP/Diploma – DM), or Pre-degree Access Diploma.

You will be asked to send a digital portfolio prior to interview. For more details please visit the course page on our website.

We run Portfolio Workshops throughout the year to help you prepare for interviews.

Please see page 195 for our wider entry criteria.

This course is delivered on-site each week across the academic year



The Open University

## BA (Hons) GRAPHIC MEDIA & COMMUNICATION

### Your course

This is an ideal course for you if you have an interest in one of the wide ranging disciplines spanned by the graphic arts including illustration, photography, animation, moving image, graphic design, interactive, web design, packaging or advertising.

Graphic Media is an ever changing dynamic subject to study due to our rapidly changing cultural landscape coupled with developments in production techniques and communication technologies. Its different disciplines span from typography to web design, from information graphics to branding and illustration.

Students have the opportunity to engage in study trips to creative studios and exhibitions, regionally and nationally. Previous students have visited cities such as New York and Paris as part of their studies.

Students who are successful in studying this programme develop a range of skills across the broad disciplines of graphic media including:

- A working knowledge of industry-standard equipment and software.
- A professional understanding of the strength and usage of visual communication.
- An understanding of how to evaluate a client's needs and respond successfully to them.

- Experience of working as part of a professional team, gained through live projects and work placements.
- To develop your own visual signature, enabling you to generate and express your personal ideas and beliefs.

### Teaching & assessment

Teaching takes place within the newly refurbished Arts House building utilising a range of purpose-built media and design studios.

Assessment is based on 100% course work and we undertake continuous modular assessment. Studio-based assignments are augmented by lectures, seminars and workshops throughout the year.

### Where does it lead?

Thanks to their grounding in a broad range of disciplines, our graphic media courses are the ideal foundation for progression onto a successful career as a Graphic Designer, Illustrator or Web Designer in advertising, marketing and creative agencies.

**Did you know?**  
Our students have won two Yellow Pencils at D&AD over the last two years.



### Key Facts

**Duration full-time:** 2 years  
(apply via UCAS)

**Duration part-time:** 4 years  
(apply to University Centre  
Somerset)

**Awarding body:**  
The Open University

**Location:** Taunton

### Entry requirements

Applicants require 64 UCAS points at AS/A2 Level (minimum 32 points at A2 Level) or equivalent Edexcel qualification (Extended Diploma - MPP/Diploma - MM), or Pre-degree Access Diploma.

We run Portfolio Workshops throughout the year to help you prepare for interviews.

Please see page 195 for our wider entry criteria.

This course is delivered on-site each week across the academic year



The Open  
University

## Foundation Degree GRAPHIC MEDIA & COMMUNICATION

### Your course

The aim of the Foundation Degree is to help you develop the creative skills needed to achieve success in your future career. With this in mind, the course explores how ideas are communicated through language, images and messages. It equips you with the understanding and skills to operate effectively within the fast-moving and stimulating design sector.

### Where does it lead?

This course is a good basis from which to pursue postgraduate study or a career as a Designer, Illustrator or Web Designer in advertising, marketing and creative agencies.

### Example modules include:

Across the duration of your course you will study modules that may include:

- Idea & Materiality
- Sustainability
- Critical Reflection
- Studio Practice
- Making Meanings
- Value and Context
- Creativity and Collaboration

### Teaching & assessment

Teaching takes place within the newly refurbished Arts House building utilising a range of purpose-built media and design studios. Each student is provided with a dedicated studio space.

Assessment is based on 100% course work and we undertake continuous modular assessment. Studio-based assignments are augmented by lectures, seminars and workshops throughout the year.





## BA (Hons) Top-up Degree **GRAPHIC MEDIA & COMMUNICATION**

### Key Facts

**Duration full-time:** 1 year  
(apply via UCAS)

**Duration part-time:** 2 years  
(apply to University Centre Somerset)

**Awarding body:**  
The Open University

**Location:** Taunton

### Entry requirements

Applicants must have a Foundation Degree, HND or equivalent Level 5 qualification in an appropriate discipline.

We run Portfolio Workshops throughout the year to help you prepare for interviews.

Please see page 195 for our wider entry criteria.

This course is delivered on-site each week across the academic year

### Your course

Within the School of Art and Design we pursue the intelligent development of visual communication. Students learn the invisible language of form, composition, balance, structure, rhythm and hierarchy coupled with the very visible language of communication.

### Example modules include:

Across the duration of your course you will study modules that may include:

- Context
- Inspiration and Innovation
- Resolution

### Teaching & assessment

Teaching takes place within the newly refurbished Arts House building utilising a range of purpose-built media and design studios. Each student is provided with a dedicated studio space.

Assessment is based on 100% course work and we undertake continuous modular assessment. Studio-based assignments are augmented by lectures, seminars and workshops throughout the year







### Key Facts

**Duration full-time:** 2 years  
(apply via UCAS)

**Duration part-time:** 4 years  
(apply to University Centre Somerset)

**Awarding body:**  
The Open University

**Location:** Taunton

### Entry requirements

Applicants require 64 UCAS points at AS/A2 Level (minimum 32 points at A2 Level) or equivalent Edexcel qualification (Extended Diploma – MPP/Diploma – MM), or Pre-degree Access Diploma.

You will be asked to send a digital portfolio prior to interview. For more details please visit the course page on our website.

We run Portfolio Workshops throughout the year to help you prepare for interviews.

Please see page 195 for our wider entry criteria.

This course is delivered on-site each week across the academic year



The Open University

## Foundation Degree MEDIA MAKE-UP

### Your course

Would you like to be a professional make-up artist, working in places like English National Opera and West End theatres, or the BBC and ITV, and on major film productions with directors like Steven Spielberg, Tim Burton and Danny Boyle?

That's exactly what our graduates have gone on to achieve, and with this course under your belt, there's every chance for you to follow suit.

This unique programme will give you:

- An in-depth understanding of the media make-up industry.
- Insight into the role of make-up artists in relation to stage, TV and film, fashion editorial and promotional shoots.
- The skills and creative flair to use make-up to express emotions, transform faces and portray character.
- The technical and artistic skills for complete make-up transformations.

We offer opportunities for residential trips in the UK and abroad as well as a variety of day trips. Previous cohorts have taken opportunities to embark on study visits to London, New York, Berlin and Paris among others.

### Example modules include:

Over the duration of the Foundation Degree you will study modules that may include:

- Make-up Investigation
- Make-up Effects
- Professional Practice & Enterprise
- Hairdressing & Pastiche in Context
- Culture, Media and Make-up
- Prosthetics
- Editorial and Promotional Disciplines

### Teaching & assessment

Our specialist staff have extensive knowledge of the industry, along with the experience and expertise to guide you as you develop your skills set.

The programme is modular in design, and assessment is continuous, by means of coursework. You will complete written assignments, journals and design presentations, as well as undertaking regular practical projects. You will also attend lectures and workshops and develop your research skills throughout the course.

### Where does it lead?

Because this course equips you with high-level practical skills, there is every chance of securing work upon graduation. Our graduates have gone on to work on blockbuster films including Harry Potter, Star Wars and World War Z.





## KATIE JORDAN

### BA (Hons) Media Make-up

*I chose the University Centre Somerset because I liked the facilities and the teaching staff have great industry experience. The groups are small so the tutors have more time to give you personal attention and get to know you. I feel valued here and not just a number amongst thousands of students.*

*I liked the College straight away. The rooms are spacious and we have a dedicated studio for prosthetics. We also have a beauty room with mirrors and fantastic lighting – it's very professional.*

*I'd like to work in film or television, maybe on a soap like Emmerdale or Corrie. It would be fantastic to be part of the make-up team on a reality show like Strictly, but I'm open to anything. I prefer prosthetics, but I'd be happy doing beauty make-up.*

*I looked on the website, got a feel for the place and came for a visit to meet the tutors and look around. Rather than being intimidated, I was totally inspired and wanted to start immediately. Whilst here, I've been lucky enough to work for the BBC on the period drama Wolf Hall. I went with a fellow student and we worked on the crowd rooms. I learnt so much, not just about make-up but also how the TV world works. By coming to uni, I've had an excellent grounding that I've been able to develop through work experience.*

### Key Facts

**Duration full-time:** 1 year  
(apply via UCAS)

**Duration part-time:** 2 years  
(apply to University Centre Somerset)

**Awarding body:**  
The Open University

**Location:** Taunton

### Entry requirements

Applicants must have a Foundation Degree, HND or equivalent Level 5 qualification in an appropriate discipline with an average of 50% across all modules.

You will be asked to send a digital portfolio prior to interview. For more details please visit the course page on our website.

We run Portfolio Workshops throughout the year to help you prepare for interviews.

Please see page 195 for our wider entry criteria.

This course is delivered on-site each week across the academic year



## BA (Hons) Top-up Degree MEDIA MAKE-UP

### Your course

The Top-up degree follows a modular structure and develops your learning and skills. At the heart of this course is a series of projects designed to develop your research skills and help you appreciate media make-up and related areas of visual culture. Students are encouraged to specialise in a particular make-up discipline and develop their skills in that area. As a result, you can expect to graduate from the course with a strong portfolio in your chosen field.

We offer opportunities for residential trips in the UK and abroad as well as a variety of day trips. Previous cohorts have taken opportunities to embark on study visits to London, New York, Berlin and Paris among others.

### Example modules:

During the BA (Hons) Media Make-up Top-up you will study a series of modules that may include:

- Advanced Materials and Techniques
- Project by Design
- Contextual Research and Analysis
- Professional Portfolio
- Final Major Project

### Teaching & assessment

Our specialist staff have extensive knowledge of the industry, along with the experience and expertise to guide you as you develop your skills set.

The programme is modular in design, and assessment is continuous, by means of coursework. You will complete written assignments, journals and design presentations, as well as undertaking regular practical projects. You will also attend lectures and workshops and develop your research skills throughout the course.

Students will establish a foundation base of skills within disciplines across all areas of the industry. Students will then be encouraged to go on to specialise in a particular make-up discipline and develop their skills in that area.

### Where does it lead?

Because this course equips you with high-level practical skills, there is every chance of securing work upon graduation. Our graduates have gone on to work on blockbuster films including Harry Potter, Star Wars and World War Z.



## Alex Hunt

### Completed the Media Production Foundation Degree

*I loved the creative freedom given to me on this course. You are given all the skills in your first year to work independently in your second. I now feel I have the expertise and knowledge to work freelance; I am currently working on a skating DVD, which I filmed, edited and promoted by myself.*

## Foundation Degree MEDIA PRODUCTION

### Key Facts

**Duration full-time:** 2 years  
(apply via UCAS)

**Duration part-time:** 4 years  
(apply to University Centre  
Somerset)

**Awarding body:**  
Plymouth University

**Location:** Taunton

### Entry requirements

You will require a minimum of 48 (previously 120) UCAS tariff points from a full Level 3 qualification in a relevant subject area. You will also be required to submit a show reel of your production work plus an example of your academic writing ability at interview. Mature applicants with relevant experience who do not have the stated entry requirements are encouraged to apply.

Please see page 195 for our wider entry criteria.

### Your course

This course aims to develop your skills as a digital storyteller in a range of media, including film making, video production, photography, sound design and radio. You will understand and be able to apply yourself to the entire production process.

Major media professional links and work-based learning opportunities will be provided at local, regional and national level to enable you to make informed, critical decisions involving your own progression based on 'live' contexts.

### Example modules:

During your Foundation Degree you may study subjects including:

- Narrative Production
- Documentary Production
- Critical Practice Documentary
- Live Project – working with a client
- Promotion and Exhibition

### Teaching & assessment

A range of study methods are used with an emphasis on using modern technology creatively to both research ideas and communicate completed products. You are encouraged to work to your strengths, and will be supported in developing these skills.

Communication between you and your tutor is key to our supportive ethos, with social networking and blogging being used to help you

develop ideas, solve problems and submit work.

Assessment is via practical projects, reports, essays and peer and professional evaluations.

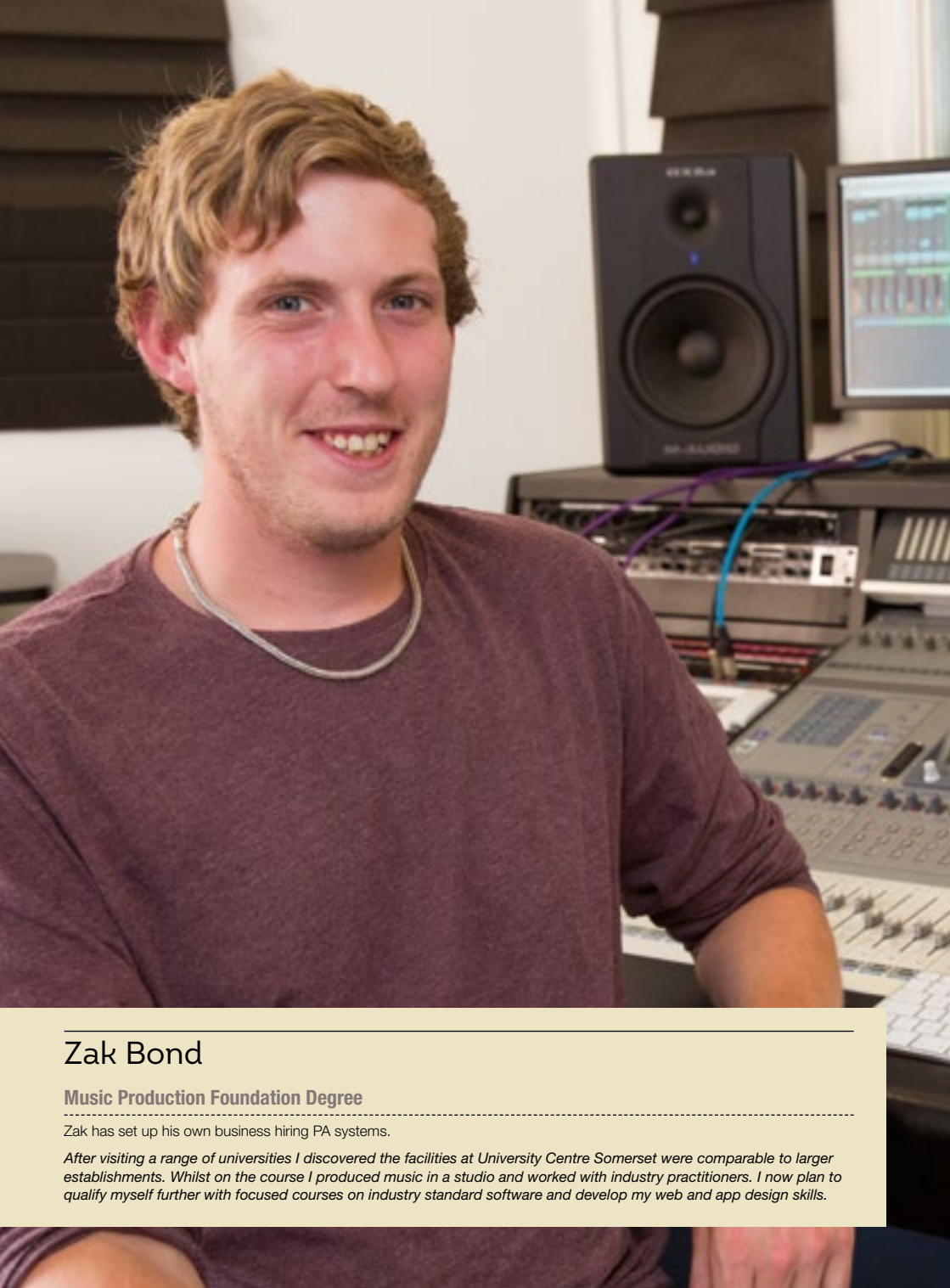
### Where does it lead?

On successful completion, you will have the opportunity to progress onto related Honours Degrees at Plymouth University: BA (Hons) Media Arts or BA (Hons) TV Arts. Alternatively you may wish to embark on a career within the creative and media industries.

You could work for a production company or become a researcher, editor, camera operator, producer, director or location manager. You could also go into advertising, marketing or communications. Recent surveys show that media graduates are among the most employable.

**IN  
PARTNERSHIP  
WITH  
PLYMOUTH  
UNIVERSITY**





## Zak Bond

### Music Production Foundation Degree

Zak has set up his own business hiring PA systems.

*After visiting a range of universities I discovered the facilities at University Centre Somerset were comparable to larger establishments. Whilst on the course I produced music in a studio and worked with industry practitioners. I now plan to qualify myself further with focused courses on industry standard software and develop my web and app design skills.*

# Foundation Degree MUSIC PRODUCTION

### Key Facts

**Duration full-time:** 2 years  
(apply to UCAS)

**Duration part-time:** 4 years  
(apply to University Centre Somerset)

**Awarding body:**  
Oxford Brookes University

**Location:** Taunton

### Entry requirements

A minimum of 48 UCAS tariff points from a full Level 3 qualification in a relevant subject area. Applicants will also need to attend an interview, audition and provide a portfolio. Mature applicants with relevant experience who do not have the stated entry requirements are encouraged to apply.

Please see page 195 for our wider entry criteria.

OXFORD  
BROOKES  
UNIVERSITY

### Your course

This course is designed for students who are looking for a career in the music industry and have a strong interest in music performance, music composition and production, studio recording, live sound and music software design. The course gives students a range of both practical and theoretical skills that can be utilised in the creative industries and offers two alternative pathways: music performance and music technology.

Work-based learning and experience is embedded into the course and local employers (such as Modern World Studios and M5 Audio) are frequently involved in industry based projects, contributing to assessment in the studio and live sound production projects. Students will also have the opportunity to develop their performance events production and live music production skills at the college's brand new McMillan Theatre complex to work on live client briefs or perform for local music events.

Music students have been on residential trips to New York, London and Brighton. Industrial music practitioners regularly come to the music department to work with students on projects and lead workshops and lectures.

### Example modules:

Modules are dependent on the chosen pathway but may include:

- Studio Recording Techniques
- Live Sound
- Music Industry
- Music Sequencing
- Sound & Music for Media
- Events Management & Production

### Teaching & assessment

Coursework is an important element in the assessment of the course and a large variety of assignments are used, depending upon the subject. Assignment methods will include performances & practical assessments, oral presentations & vivas, creative production tasks, practical and written technical reports.

### Where does it lead?

The Foundation Degree Music Production programme offers access to a wide range of professions within the music industry as well as opportunities to specialise further by topping up to the BA (Hons) Creative Music Production Degree at Oxford Brookes University. Past students have gone on to work for companies including M5 Audio, Films@59, Cygnus Music, and Bridgwater & Taunton College.



### Key Facts

**Duration full-time:** 2 years  
(apply to University Centre Somerset)

**Awarding body:**  
Trinity College London

**Location:** Bridgwater

### Entry requirements

You will have completed dance training equivalent to Degree Level which ensures you have appropriate dance knowledge, skills and understanding. Applicants with other relevant qualifications or no formal dance qualifications, but significant dance experience, can apply. Applications from practitioners across a range of dance styles are invited. The minimum age for undertaking the qualification is 18 years but normally you will be over 21 years of age.

Please see page 195 for our wider entry criteria.

**TRINITY**  
COLLEGE LONDON

## Level 6 Diploma DANCE TEACHING AND LEARNING

### Your course

This qualification is for anyone working with children and young people in dance. It is designed for people with a variety of dance teaching backgrounds, from those new to teaching to those with many years of experience. It is applicable for practitioners across different dance styles such as contemporary, ballet, jazz or street dance. Only 15 providers have been authorised to deliver this qualification by Trinity College London; we are one of only two providers who offer this in the South West of England.

### Example modules:

During the first year of DDTAL you will study four units which will comprise a variety of modules, which may include:

- Managing Challenging Behaviour
- Creating, Performing and Appreciating Dance
- Managing and Evaluating Learning
- Reflective Practice and Action Learning Approaches.

### Teaching & assessment

The majority of modules are taught via practical workshops, lectures and seminars by highly experienced lecturers and practitioners.

Course assessment will be via a series of practical and written tasks; you will also be observed delivering a dance class.

### Where does it lead?

On completion of this course you will have the opportunity to teach dance. It is a teaching qualification recognised by the Education and Training Foundation (ETF) as being the equivalent of a DTLLS (Diploma in Dance Teaching & Learning) award. You are then able to apply for QTLS (Qualified Teacher Learning and Skills) enabling you to teach within schools in the formal sector.

The focus of this course is to provide you with the skills and qualifications needed to become a dance teacher. Previous students have successfully found work teaching or supporting their current roles in the performing arts industry.

**Did you know?**  
Foundation Degree in  
Performance Arts  
coming soon!





#### Key Facts

**Duration full-time:** 1 year  
(apply to University Centre Somerset)

**Awarding body:**  
Trinity College London

**Location:** Bridgwater

#### Entry requirements

This course is designed for those people who hold the equivalent of a Level 3 BTEC or A Level in Dance/ Performing Arts. Individuals with relevant industrial experience will also be considered. A place on the course is also subject to a successful audition and interview.

Please see page 195 for our wider entry criteria.

**TRINITY**  
COLLEGE LONDON

## Level 4 ATCL PERFORMANCE CONTEMPORARY DANCE

#### Your course

The course is designed to enable contemporary dance students to display and evidence their contemporary dance performance skills and knowledge through a series of performance-based assessment tasks. The qualification encourages candidates to be multi-skilled, reflective performers showing professional potential; their performance standard will be comparable to other qualifications available at Level 4 in the qualifications and credit framework or the first year of Degree Level study.

#### Example modules:

You will cover advanced technique and choreography throughout semesters one and two including a repertory class in which material may be developed with a range of practitioners in preparation for a tour. The tour may involve performances in a range of settings primarily across the South West. There will also be external assessment, which occurs at the end of the programme.

#### Teaching & assessment

The majority of modules are taught via practical workshops, lectures and seminars by highly experienced lecturers and practitioners.

#### Where does it lead?

On completion of this course you will have the opportunity to apply for other programmes at dance schools and Higher Education including the Level 6 DDTAL (Diploma in Dance Teaching & Learning) course at University Centre Somerset. You will have also developed a network of contacts that could lead directly to work or as a teacher.

The focus of this course is to prepare you for a range of career options in the dance industry.



### Key Facts

**Duration full-time:** 1 year  
(apply to University Centre Somerset)

**Awarding body:**  
Trinity College London

**Location:** Bridgwater

### Entry requirements

This course is designed for those people who hold the equivalent of a Level 3 BTEC or A Level in Dance/Performing Arts. Individuals with relevant industry experience will also be considered. A place on the course is also subject to a successful audition and interview.

Please see page 195 for our wider entry criteria.

**TRINITY**  
COLLEGE LONDON

## Level 4 ATCL PERFORMANCE ARTS

### Your course

The qualification is designed to enable Performance Arts students to display and evidence their performance skills and knowledge through a series of performance-based assessment tasks. The qualification encourages candidates to be multi-skilled, reflective performers showing professional potential; their performance standard will be comparable in the UK to other qualifications available at Level 4 in the Qualifications and Credit framework or the first year of Degree Level study.

### Example modules:

Throughout the qualification you may study advanced Acting (Devising, Voice, Scripted works), Dance Techniques and Advanced Dance Techniques (Technique, Choreography and Repertory). In addition, you may also study Acting Through Song and Performance Skills. You will specialise in a chosen area (acting or dance) and continue to develop your techniques.

### Teaching & assessment

The majority of modules are taught via practical workshops, lectures and seminars by highly experienced lecturers and practitioners.

### Where does it lead?

On completion of this course you will have the opportunity to apply for other programmes at Performing Arts, Musical Theatre or Dance Schools and Higher Education including the Level 6 DDTAL (Diploma in Dance Teaching & Learning) course at Bridgwater & Taunton College. You will have also developed a network of contacts that could lead directly to employment.

The focus of this course is to prepare you for a range of careers within the Performing Arts industry.





#### Did you know?

Previous graduates have exhibited at the global showcase 'New Designers' in London.

#### Key Facts

**Duration full-time:** 3 years  
(apply via UCAS)

**Awarding body:**  
The Open University

**Location:** Taunton

#### Entry requirements

Applicants require 80 UCAS points at AS/A2 Level (minimum 32 points at A2 Level) or equivalent Edexcel qualification (Extended Diploma – MMP/Diploma – DM), or Pre-degree Access Diploma.

You will be asked to send a digital portfolio prior to interview. For more details please visit the course page on our website.

We run Portfolio Workshops throughout the year to help you prepare for interviews.

Please see page 195 for our wider entry criteria.

This course is delivered on-site each week across the academic year



The Open University

## BA (Hons) TEXTILES & SURFACE DESIGN

#### Your course

This innovative, hands-on course will encourage you to push the boundaries of textiles and surface design, to change the spaces around us as well as the way we dress. The course is about improving the quality of our designed environment and challenging preconceptions of style. You can choose to focus on interior textiles, surface design or create innovative fabrics for fashion.

You will be taught to question the ways in which colour, pattern, image, scale and texture create style and atmosphere. You will learn to create and present your work as a professional with an emphasis on business skills and how your designs fit into the workplace.

You will use a wide range of textile and surface design processes with state-of-the-art workshop facilities to develop a portfolio of work that is instantly identifiable as yours.

#### Example modules:

During the course you will:

- Gain a thorough insight into many aspects of textile and surface design development including printing, embroidery and embellishment, dyeing, digital imaging and mixed-media processes.
- Be introduced to a range of textiles and surface design applications for body and space which link the disciplines of

textiles, fashion, graphics and product design.

- Have the opportunity to explore and examine the application and function of your concepts in a contemporary market and understand how this affects design decisions.
- Develop the skills to bring alive both hard and soft surfaces in 2D and 3D using new and smart materials.
- Develop your business and professional practice skills by working on live and site specific briefs set by the industry.

#### Teaching & assessment

Most of your time will be spent in our first-rate studios and workshops, although your practical work will be complemented by a programme in visual culture during your first two years. Assessment is by 100% coursework. Your final Degree Show exhibition forms an essential part of assessment.

#### Where does it lead?

Graduates have established varied and exciting careers in fields such as textile design, interior design, decorative product design, automotive design, style forecasting, retail management, design management, buying, trend forecasting and gallery sales.





### Key Facts

**Duration full-time:** 2 years  
(apply via UCAS)

**Duration part-time:** 4 years  
(apply to University Centre  
Somerset)

**Awarding body:**  
The Open University

**Location:** Taunton

### Entry requirements

Applicants require 64 UCAS points at AS/A2 Level (minimum 32 points at A2 Level); or equivalent Edexcel qualification (Extended Diploma – MMP/Diploma – DM), or Pre-degree Access Diploma.

You will be asked to send a digital portfolio prior to interview. For more details please visit the course page on our website.

We run Portfolio Workshops throughout the year to help you prepare for interviews.

Please see page 195 for our wider entry criteria.

This course is delivered on-site each week across the academic year



The Open  
University

## Foundation Degree **TEXTILES & SURFACE DESIGN**

### Your course

You will have a rich experience exploring interior textiles, fashion textiles and surface design to evaluate your place in the contemporary design industry. The course is aimed at nurturing students ready to progress onto further study or into the workplace. You will be taught to question the ways in which colour, pattern, image, scale and texture create style and atmosphere.

### Example modules:

Year one is an exciting year full of new opportunities and challenges - it is about having a go, making new work, and learning lots of workshop skills in relation to emerging ideas.

Modules include;

- Idea and Materiality
- Sustainability
- Critical Reflection
- Studio Practice
- Orientation

Year two supports a higher level of skill and idea development, leading towards an emergent creative identity.

Modules include:

- Making Meanings
- Value and Context
- Creativity and Collaboration
- Portfolio and Professional Practice
- Navigation Teaching and Assessment

Most of your time will be spent in our first-rate studios and workshops, although your practical work will be complemented by a programme in visual culture during your first two years. Assessment is by 100% coursework without exams.

### Where does it lead?

The FD is a perfect platform for progression onto the BA (Hons) Top-up degree. Our graduates have established careers in fields such as textile/interior design, style/trend forecasting and buying.





## BA (Hons) Top-up Degree **TEXTILES & SURFACE DESIGN**

### Key Facts

**Duration full-time:** 1 year  
(apply via UCAS)

**Duration part-time:** 2 years  
(apply to University Centre  
Somerset)

**Awarding body:**  
The Open University

**Location:** Taunton

### Entry requirements

Applicants must have a Foundation Degree, HND or equivalent Level 5 qualification in an appropriate discipline.

You will be asked to send a digital portfolio prior to interview. For more details please visit the course page on our website.

We run Portfolio Workshops throughout the year to help you prepare for interviews.

Please see page 195 for our wider entry criteria.

This course is delivered on-site each week across the academic year

### Your course

The Top-up year focuses on creating your own personal design statement which will culminate in your work being shown at the End of Year Degree Show.

We offer opportunities for residential trips in the UK and abroad as well as a variety of day trips. Previous cohorts have taken opportunities to embark on study visits to London, New York, Berlin and Paris among others.

### Example modules:

This course is delivered over one year and you will:

- Complete a context module that will underpin your studio work.
- Be encouraged to enter competitions and complete projects set by leading designers.
- Develop an industry ready portfolio and refined business profile.
- Learn exhibition skills which allow you to promote your work or curate shows for others.
- Develop a professional profile including full use of social media and website exposure.

### Teaching & assessment

Most of your time will be spent in our first-rate studios and workshops, although your practical work will be complemented by a programme in visual culture during your first two years. Assessment is by 100% coursework without exams. Your final Degree Show exhibition forms an essential part of assessment.

### Where does it lead?

Our graduates have established careers in fields such as textile/interior design, style/trend forecasting and buying.







# CONSTRUCTION AND THE BUILT ENVIRONMENT

It's easy to take the built environment for granted. After all, for many of us, it's just a backdrop to our lives. But for construction students, it's the only thing they want to look at.

Construction professionals quite literally build the world around us. So if you fancy playing a part in shaping the future, this is the area of study for you.

Our courses involve a mix of practical and theoretical learning, work placements and include plenty of time getting hands-on in our well-equipped workshops. You can be certain that studying at University Centre Somerset will lay the foundations for a fulfilling and successful career.

THE CONSTRUCTION INDUSTRY WILL NEED TO RECRUIT AN AVERAGE OF 44,690 PEOPLE EACH YEAR BETWEEN NOW AND 2019 TO MEET DEMAND.<sup>1</sup>



THE AVERAGE BASIC SALARY FOR MEMBERS OF THE INSTITUTION OF CIVIL ENGINEERS (ICE) IS **£49,793.**<sup>2</sup>

<sup>1</sup> WWW.CONSTRUCTIONNEWS.CO.UK  
<sup>2</sup> WWW.PROSPECTS.AC.UK  
<sup>3</sup> WWW.UK.BUSINESSINSIDER.COM/  
<sup>4</sup> ONS NOMIS DATABASE



EUROPE HAS SOME OF THE BIGGEST INFRASTRUCTURE PROJECTS EVER UNDERTAKEN.<sup>3</sup>

THE CONSTRUCTION INDUSTRY EMPLOYS MORE THAN 2.1M PEOPLE, REPRESENTING 6.2% OF THE UK'S WORKFORCE.<sup>4</sup>





## Route to full membership of CIOB (MCIOB Designation)

# CHARTERED MEMBERSHIP PROGRAMME (CMP)

### Key Facts

#### Duration part-time:

10 months

Distance support and  
8 workshops

(apply to University Centre  
Somerset)

**Awarding body:** Chartered  
Institute of Building

**Location:** Taunton

### Entry requirements

We will assess entry level attainment by looking at your background, experience and occupational competence. The course requires approximately five years of management experience in the construction environment, either site-based or office related.

We also look at your CV and ask you to undertake an interview.



### Your course

This course converts construction management experience into chartered status of a professional institution by providing the MCIOB designation. This is recognised and respected both across the UK and internationally, and engenders confidence in you from colleagues, employers and clients.

### Example modules:

The course is suited to a wide range of senior construction personnel such as Site Managers, Project Managers, Contracts Managers, Commercial Managers, Senior Quantity Surveyors, through to Local Authority Officers, Senior Company Executives and Company Owners. The course recognises prior experience and develops this to convert you to Professional Chartered Status.

You will cover four modules which may include:

- Construction Technology
- Health, Safety and Environment
- Management
- Contract and Commercial Practice

### Teaching & assessment

Learning resources, information and revision packs will be provided by University Centre Somerset.

### Where does it lead?

Those who have achieved MCIOB status will be able to use the new designation of 'Chartered Construction Managers' as opposed to 'Chartered Builders' if they prefer. MCIOB can provide access to Associate Membership of other professional bodies. It also allows access to Chartered Environmentalist (CEnv) status if you are working in an appropriate role.

With appropriate experience and if you are working at the required level, MCIOB can eventually be upgraded to Fellowship FCIOB.



### Key Facts

**Duration part-time:** 2 years,  
1 day per week  
(apply to University Centre  
Somerset)

**Awarding body:** Edexcel

**Location:** Taunton

### Entry requirements

People come to this course from a range of backgrounds, and there is no single specific entry requirement. However, applicants would be expected to have at least one of the following:

- AS/A2 Levels
- Level 3 in Maths
- A National Certificate in Civil Engineering
- A National Diploma in Construction
- Other appropriate qualifications may be taken into consideration
- Relevant work experience

Please see page 195 for our wider entry criteria.

edexcel

## Higher National Certificate (HNC) **CONSTRUCTION & THE BUILT ENVIRONMENT (CIVIL ENGINEERING)**

### Your course

Would you like to work towards a nationally recognised qualification that builds on the skills you have already developed in the workplace, to enhance your employability? If so, our Higher National Certificate in Civil Engineering is the perfect course to choose.

These professional qualifications provide the perfect foundation for a career in Civil Engineering. They are also a great basis from which to study a degree and blend theoretical and practical aspects of the discipline.

### Example modules:

During your course you will cover a range of topics that may include:

- Construction Practice & Management
- Construction Information (Drawing, Detailing and Specification)
- Mathematics for Construction
- Principles of Structural Design
- Surveying, Measurement & Setting out

### Teaching & assessment

Assessment is by a mix of assignments, project work and some exams. Each module is assessed by means of a series

of internally set assignments that involve a combination of scenario-based tasks linked to project work, practical exercises, timed tasks, individual study and presentations.

### Where does it lead?

Completion of the HNC in Construction and the Built Environment (Civil Engineering) enables you to apply for membership of the Institute of Civil Engineers. With this behind you, the world of work presents a variety of possibilities.

Our students have gone on to pursue careers such as:

- Civil Engineer
- Project Manager
- Highway Engineer
- Site Manager
- Utilities Engineer
- Structural Engineer

Alternatively, graduates may apply to study the discipline at degree level.





## Higher National Diploma (HND) **CONSTRUCTION & THE BUILT ENVIRONMENT (CIVIL ENGINEERING)**

### Key Facts

**Duration full-time:** 2 years, 1 day per week  
(apply via UCAS)

**Awarding body:** Edexcel

**Location:** Taunton

### Entry requirements

The HNC in Construction and the Built Environment (Civil Engineering) is a prerequisite to study for the HND in Civil Engineering. However other Level 4 qualifications may be considered as recognised prior learning for entry onto the programme.

Employment in the civil engineering/construction industry is helpful but not a prerequisite.

All applicants will be considered on individual merit and interviewed to ensure they have the potential to achieve this qualification.

Please see page 195 for our wider entry criteria.

### Your course

Would you like to work towards a nationally recognised qualification that builds on the skills you have already developed in the workplace to enhance your employability? If so, our Higher National Diploma in Civil Engineering is the perfect course to choose.

These professional qualifications provide the perfect foundation for a career in the construction industry. They are also a great basis from which to pursue degree level study in Civil Engineering, and blend theoretical and practical aspects of the discipline.

The programme is equally suited to those who may wish to progress on from the HNC in Civil Engineering to study at Level 5 or achieve a professional qualification to allow the application for chartered status in the future. The HND may be used as the Technical Certificate for a Higher Apprenticeship in Construction Site Management (Civil Engineering with Sustainability).

### Example modules:

During your course you will cover a range of topics that may include:

- Applied Mathematics for Complex Engineering Problems
- Management Principles and Applications for Construction

- Transportation for Construction and the Built Environment
- Advanced Civil Engineering
- Hydraulic Principles and Applications

### Teaching & assessment

Assessment is by a mix of assignments, project work and some exams. Each module is assessed by means of a series of internally set assignments that involve a combination of scenario-based tasks linked to project work, practical exercises, timed tasks, individual study and presentations.

### Where does it lead?

Our graduates have gone on to pursue careers such as:

- Civil Engineering
- Project Management
- Highway Engineering
- Site Management
- Utilities Engineering
- Civil Engineering Surveying
- Structural Engineering

edexcel



## GARY PARSONS

### HNC in Construction & The Built Environment (Civil Engineering)

*I work for the council and decided to study in order to improve my technical knowledge of the industry and progress my career. It's surprised me how much I'm enjoying learning, even the theory.*

*I hadn't realised what's involved in the construction industry and how complicated it is.*

*We recently went on a field trip to Watchet for our geology module. It really cemented the theory and made it relevant which will help me when I have to write about it.*

*I'd happily recommend the University Centre Somerset – it has everything I need. The lecturers are really helpful and knowledgeable, the campus is modern and the new science labs are fantastic, and really well resourced.*

# Higher National Certificate (HNC) **CONSTRUCTION & THE BUILT ENVIRONMENT**

## Key Facts

**Duration part-time:** 2 years,  
1 day per week  
(apply to University Centre  
Somerset)

**Awarding body:** Edexcel

**Location:** Taunton

## Entry requirements

People come to this course from a range of backgrounds, and there is no single specific entry requirement. However, applicants would be expected to have at least one of the following:

- A minimum of 48 UCAS tariff points from a full Level 3 qualification in a relevant subject.
- A Level 3 National Diploma in Construction
- Other appropriate qualifications may be taken into consideration
- Relevant work experience

Please see page 195 for our wider entry criteria.

## Your course

These courses equip you with a nationally recognised qualification that enhances your workplace skills and helps prepare you to advance your career in the construction industry.

These are professional qualifications that provide the ideal foundation for further study, or to help you secure a job.

The Higher National Certificate (HNC) consists of eight units, covering key knowledge and practical skills for the sector.

## Example modules:

During your course you will cover a range of topics that may include:

- Construction Practice & Management
- Legal and Statutory Responsibilities in Construction
- Construction Information (Drawing, Detailing and Specification)
- Principles of Refurbishment

## Teaching & assessment

Assessment is by a mix of assignments, project work and some exams. Each module is assessed by means of a series of internally set assignments that involve a combination of scenario-based tasks linked to project work, practical exercises, timed tasks, individual study and presentations.

## Where does it lead?

There are more than 30 career choices within the construction professions, so the HNC really does open doors. In addition, you could go on to study at HND or degree level.

edexcel





### Key Facts

**Duration full-time:** 2 years, 1 day per week  
(apply via UCAS)

**Awarding body:** Edexcel

**Location:** Taunton

### Entry requirements

The HNC is a prerequisite to study for the HND in Construction and Built Environment. However other Level 4 qualifications may be considered as recognised prior learning for entry onto the programme.

Employment in the Construction Industry is helpful but not a prerequisite. Applicants are considered on individual merit, and interviewed to ensure they have the potential to achieve this qualification.

Please see page 195 for our wider entry criteria.

## Higher National Diploma (HND) **CONSTRUCTION & THE BUILT ENVIRONMENT**

### Your course

These courses equip you with a nationally recognised qualification that enhances your workplace skills and helps prepare you to advance your career in the construction industry.

These are professional qualifications that provide the ideal foundation for further study, or to help you secure a job.

This programme is suitable for those wishing to progress from the Higher National Certificate in Construction and the Built Environment to study at Level 5 or achieve a professional qualification which allows them to apply for chartered status.

The course covers some of the key knowledge and practical skills required in the construction sector. It is an eight unit qualification with the Higher National Certificate (HNC) units as a prerequisite. The Higher National Diploma (HND) may be used as the Technical Certificate for a Higher Apprenticeship in Construction Site Management (Civil Engineering with Sustainability).

### Example modules:

During your course you will cover a range of topics that may include:

- Management Principles and Applications for Construction

- Conversion and Adaptation of Buildings
- Contract Procedures and Procurement for Construction
- Economics for Construction

### Teaching & assessment

Assessment is by a mix of assignments, project work and some exams. Each module is assessed by means of a series of internally set assignments that involve a combination of scenario-based tasks linked to project work, practical exercises, timed tasks, individual study and presentations.

The HND is a two year part-time day release course, held one day a week.

### Where does it lead?

There are more than 30 career choices within the construction professions, so the HND really does open doors. In addition, you could go on to study at degree level.

edexcel 



## CHRIS KITTO

### Level 6 NVQ Diploma in Construction Site Management

*I'm a Site Manager at S C Forecourts Ltd and we work across the country, specialising in new builds, renovations and petrol station redevelopments. I wanted to expand my knowledge of the industry and gain a recognised qualification, and colleagues recommended the College. When I contacted the tutors they were really helpful – answering all my questions and explaining how the course is delivered and assessed.*

*Since starting, the tutors conduct site visits and are always available should I need them. Occasionally I attend sessions at the College, but the best part of the course is how flexible it is – it fits around my hectic lifestyle, rather than the other way around.*

#### Key Facts

**Duration full-time:** 2 years  
**flexible start**  
(apply via UCAS)

**Awarding body:** Edexcel

**Location:** Taunton

#### Entry requirements

Students need to have relevant experience and be working at, or towards, the appropriate level that allows the collection of evidence required by the awarding body. This will be assessed when interviewed by University Centre Somerset at the outset.

Please see page 195 for our wider entry criteria.

## Level 6 NVQ Diploma **CONSTRUCTION SITE MANAGEMENT (CONSTRUCTION)**

#### Your course

This course converts prior learning and workplace experience into a professional qualification without the need to sit formal exams. It provides a stepping stone to Chartered Membership of the CIOB and demonstrates a senior level of competence to colleagues, employers and clients.

#### Example modules:

There are several pathways within the qualification such as Building & Civil Engineering and Residential Development & Conservation. Each pathway comprises a suite of units, some of which are mandatory and others offering a choice of options. Examples of these include:

- Developing Working Relationships
- Controlling the Project Programme
- Selecting Work Methods
- Health, Safety & Environmental

#### Teaching & assessment

Progress is made by collecting relevant evidence in order to demonstrate your competence against a pre-set range of assessment criteria, governed by the National Occupational Standards. Evidence can take many forms including documents,

photographs, video, written reports, witness testimonies or recorded interviews. Evidence signposts are provided by us and these help to decipher the requirements set by the awarding body by giving you specific information. In-house assessment is independently internally verified and externally verified by the Standards Verifier representing the awarding body.

#### Where does it lead?

You can move directly to the Professional Review stage of the route to Chartered status of the CIOB, without the need for exams or the CMP course.

It provides the Construction Managers CSCS black card. This qualification increases the possibility of career advancement, enhanced career development opportunities and promotion.

edexcel



# ENGINEERING, NUCLEAR AND MOTORSPORT

Our Bridgwater Campus has a thriving Engineering Department located in its flagship facility, the Energy Skills Centre. We are adding to that the Advanced Engineering Centre in Bridgwater and the National College for Nuclear in Cannington (both scheduled to be opened in September 2017).

With professional engineering staff and advanced modern facilities the Engineering Department offers a comprehensive range of engineering HNCs/HNDs and degree-level programmes.

Our College Motorsport Race Team, currently national champions, consists of Higher Education students studying Motorsport and competing regularly across the country at circuits including Silverstone and Brands Hatch. Graduates go on to work for companies including McLaren and Manor F1 Racing.

ENGINEERING  
ENTERPRISES EMPLOY  
5.4 MILLION PEOPLE  
IN THE UK.<sup>1</sup>

**£55,580**  
POTENTIAL SALARY FOR  
A DESIGN ENGINEER<sup>2</sup>

WORLDWIDE  
INVESTMENT IN NEW  
NUCLEAR IS SET TO HIT  
£930 BILLION OVER  
THE NEXT 20 YEARS.

**13,930**  
STEM  
GRADUATES  
IN 2014<sup>3</sup>

DEMAND FOR  
MANUFACTURING &  
ENGINEERING  
RECRUITS  
UP BY 40%<sup>4</sup>



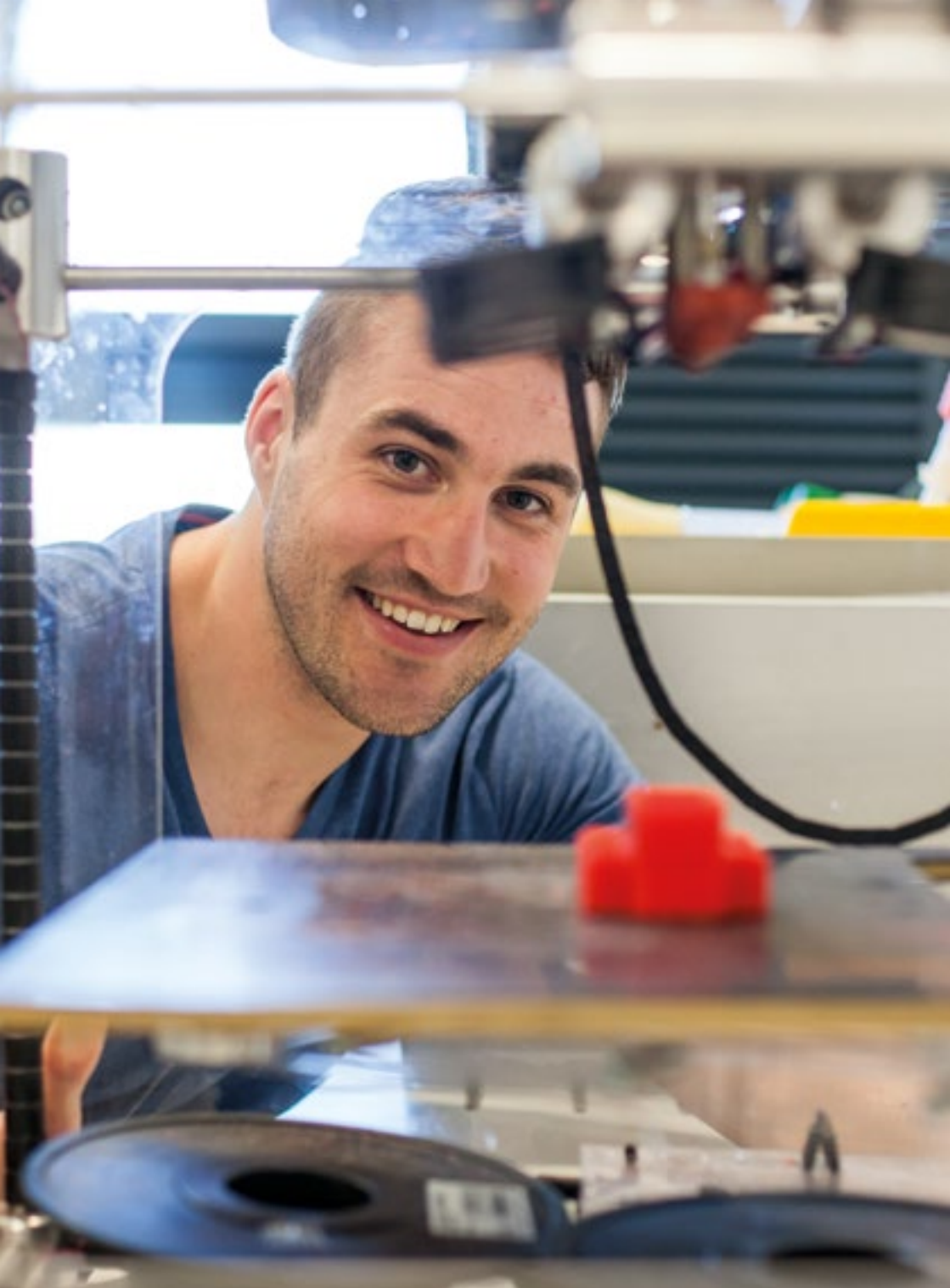
**£20 BILLION**   
AEROSPACE INDUSTRY  
TURNOVER 2012<sup>1</sup>

**£455.6  
BILLION**

<sup>1</sup> WWW.ENGINEERINGUK.COM  
<sup>2</sup> EMSI DATA 2016

CONTRIBUTED TO  
THE UK ECONOMY  
IN 2014<sup>1</sup>

<sup>3</sup> WEST OF ENGLAND LEP  
<sup>4</sup> WWW.PROSPECTS.AC.UK



## Higher National Certificate (HNC) **ELECTRICAL/ELECTRONIC AND CONTROL ENGINEERING**

### Key Facts

**Duration part-time:** 2 years  
(apply to University Centre  
Somerset)

**Awarding body:** Edexcel

**Location:** Bridgwater

### Entry requirements

You will require a full  
Level 3 qualification  
in a relevant subject.  
Mature applicants with  
relevant experience who  
do not have the stated  
entry requirements are  
encouraged to apply.

Please see page 195 for  
our wider entry criteria.

### Your course

This course is designed for those  
looking to develop a career in  
electrical/electronic or control  
systems engineering, with the  
emphasis on applying electrical,  
electronic and control principles to  
practical situations such as PLC  
and robot work cells. The University  
Centre Somerset has recently  
made substantial investment in  
robotic, PLC, CNC, CAD and  
process control technology. This  
course can also form part of a  
Higher Apprenticeship.

### Example modules:

During the course you may study  
areas including:

- Engineering Design
- Engineering Maths
- Electrical and Electronic  
Principles
- Instrumentation and Control.

### Teaching & assessment

You will learn through a  
combination of lectures, directed  
study, assignment work, practical  
exercises and the completion of a  
work-based project relevant to your  
employment or industry.

Continuous assessment of your  
performance will be carried out by  
means of assignments, homework,  
class and laboratory work and  
formal examinations.

### Where does it lead?

Upon completion of this course  
you may wish to seek work in a  
broad range of engineering fields,  
such as engineering systems,  
process control, electrical or  
electronics engineering, or  
engineering maintenance; or work  
as a technician, engineer or project  
leader. Many of our students  
have also gone on to continue  
their studies at degree level at a  
university of their choice.

edexcel 





### Key Facts

**Duration part-time:** 2 years  
(apply to University Centre Somerset)

**Awarding body:** Edexcel

**Location:** Bridgwater

### Entry requirements

You will require a full Level 3 qualification in a relevant subject. Mature applicants with relevant experience who do not have the stated entry requirements are encouraged to apply.

Please see page 195 for our wider entry criteria.

## Higher National Certificate (HNC) **PRODUCTION ENGINEERING**

### Your course

If you are looking to develop a career within the production and manufacturing industries, this course is for you. The University Centre Somerset has recently made substantial investment in robotic, PLC, CNC, CAD and process control technology, and has recently opened a new state-of-the-art engineering facility. This course can also form part of a Higher Apprenticeship.

### Example modules:

The course units provide practical skills and knowledge essential to production engineering and may include:

- Engineering Design
- Engineering Maths
- Computer Aided Design/Manufacture
- Quality and Process Improvement

### Teaching & assessment

You will learn through a combination of lectures, directed study, assignment work, practical exercises and the completion of a work-based project relevant to your employment or industry.

Continuous assessment of your performance will be carried out by means of assignments, homework, class and laboratory work and formal examinations.

### Where does it lead?

You could choose to progress to an HND top-up course or study a degree course at a university of your choice.

Upon completion you may seek work in a broad range of engineering fields, such as engineering systems, production control, design and manufacture, working as a technician, engineer or project leader.

edexcel 



## Higher National Certificate (HNC) **MECHANICAL ENGINEERING**

### Key Facts

**Duration part-time:** 2 years  
(apply to University Centre  
Somerset)

**Awarding body:** Edexcel

**Location:** Bridgwater

### Entry requirements

You will require a full Level 3 qualification in a relevant subject. For mature applicants we will accept a wide range of qualifications and experience and we encourage you to apply.

Please see page 195 for our wider entry criteria.

### Your course

Mechanical Engineers work to research, develop and manage projects, devising innovative solutions in design and manufacture. Graduates find roles within industries such as manufacturing, automotive, aerospace, energy and water. The course is designed to provide the knowledge and understanding of how advanced and innovative engineering underpins the mechanical design, advanced manufacturing and technical service areas of the industry. This course can also form part of a Higher Apprenticeship.

### Example modules:

You will need to study a number of units in order to achieve this qualification and areas of study may include:

- Engineering Design
- Engineering Maths
- Mechanical Principles
- Computer Aided Design/ Manufacture

### Teaching & assessment

You will learn through a combination of lectures, directed study, assignment work, practical exercises and the completion of a work-based project relevant to your employment or industry.

Continuous assessment of your performance will be carried out by means of assignments, homework, class and laboratory work and formal examinations.

### Where does it lead?

You could choose to progress onto an HND top-up course, which focuses on the management of the engineering industry, or study a degree course at a university of your choice. Alternatively, you could progress to employment.

Upon completion you may gain employment or progress your career in the engineering sector within industries such as manufacturing, automotive, aerospace, energy and water.

edexcel





### Key Facts

**Duration full-time:** 2 years  
(apply via UCAS)

**Duration part-time:** 3 years  
(apply to University Centre Somerset)

**Awarding body:** The University of the West of England, Bristol

**Location:** Bridgwater

### Entry requirements

You will require a minimum of 102 UCAS tariff points from a full Level 3 qualification in a relevant subject. BTEC Level 3 Further Mathematics is required for applicants holding a BTEC Level 3 Diploma.

Please see page 195 for our wider entry criteria.

**UWE Bristol** | University of the West of England

## Foundation Degree **MECHANICAL ENGINEERING**

### Your course

The Foundation Degree in Mechanical Engineering is designed to provide the knowledge and understanding of how advanced and innovative engineering underpins the mechanical design, advanced manufacturing and technical service areas of the industry. Mechanical engineers work to research, develop and manage projects, devising innovative solutions in design and manufacture. This course can also form part of a Higher Apprenticeship.

### Example modules:

During your course you may study areas including:

- Stress and Dynamics
- Design, Materials and Manufacturing
- Fluid Dynamics
- Energy and Thermodynamics
- Heat transfer, Power and the Environment

### Teaching & assessment

You will learn through a combination of lectures, directed study, assignment work, practical exercises and the completion of a work-based project relevant to your employment. Your studies will be conducted in our Energy Skills Centre at the Bridgwater Campus of University Centre Somerset.

Assessment will be via a variety of assignments and examinations which will include the analysis and resolution of engineering based scenarios, as well as a portfolio of case work and reflective assignments.

### Where does it lead?

Direct progression onto the BEng (Hons) or MEng (Hons) Mechanical Engineering Degree at the University of the West of England, Bristol is an option. This can be studied on full-time or part-time attendance patterns. Alternatively, you could progress to employment or to a higher apprenticeship programme.

Upon completion you may seek to progress your career in the engineering sector within industries such as manufacturing, automotive, aerospace, pharmaceuticals, energy and water.



## Foundation Degree **MECHATRONICS**

### Key Facts

**Duration part-time:** 3 years  
(apply to University Centre Somerset)

**Awarding body:** The University of the West of England, Bristol

**Location:** Bridgwater

### Entry requirements

102 UCAS points including A Level Mathematics or a suitable Level 3 BTEC course including a strong mathematical element.

Please see page 195 for our wider entry criteria.

### Your course

This course aims to provide students with a higher education foundation in mechatronics with a work-based context. It links modules in electrical/electronic engineering and mechanical engineering to create a broad basis for further career development.

### Example modules:

During the course you may study areas including:

- Design, Materials and Manufacturing
- Stress and Dynamics
- Electrical Technology
- Mathematics for Signals and Control
- Design and Electromechanical Systems

### Teaching & assessment

The course is completed via a combination of lectures and laboratory sessions, where students will complete project work, written reports and examinations. Your studies will be conducted in our Energy Skills Centre at the Bridgwater Campus of University Centre Somerset.

### Where does it lead?

Direct entry on to Year 3 of the University of the West of England's BEng (Hons) Electronic Engineering. The course represents an ideal foundation towards progression into a professional engineering role.

Mechatronics engineers are required in a wide variety of industries from defence, automotive and aerospace to manufacturing and nuclear decommissioning.





### Key Facts

**Duration full-time:** 2 years  
(apply via UCAS)

**Awarding body:**  
Oxford Brookes University

**Location:** Bridgwater

### Entry requirements

Typically entrants will possess:

A minimum of one pass at A Level or 6-unit Vocational A Level (in Maths, Physics or a closely related subject).

OR

A National Certificate or Diploma or other full equivalent Level 3 qualification, in a discipline related to Engineering, including merits in the applied units.

Please see page 195 for our wider entry criteria.

## Foundation Degree MOTORSPORT ENGINEERING

### Your course

This course aims to develop the knowledge and skills that you will need to become a highly qualified engineer. Our excellent facilities include a rolling road, CAD suite, wind tunnel, damper dynamometer, advanced chassis set-up equipment and cylinder head flow analysis equipment amongst a whole host of software packages. This programme is accredited by the IET and IMechE as meeting partially the academic requirements for IEng status. To get full IEng recognition you will need to study an accredited BSc (Hons) Top-up.

During each year we carry out a large range of industry partner visits to the likes of Xtrac, Williams, Force India and other related motorsport engineering companies. We also have a series of guest lectures throughout each year. You will also be given the opportunity to participate in the College race team.

### Example modules:

Over the duration of the course, you will study modules which may include:

- Motorsport Fluid Dynamics
- Computer Aided Engineering
- Vehicle Dynamics and Performance Engineering
- Composites and Materials Technology
- Engine Technology

### Teaching & assessment

You will undertake classroom lectures, coupled with practical sessions in manufacturing, composites, aerodynamics, chassis and engine technology. You will also be required to do a significant amount of self-study and research.

Assessment will include assignments, reports, portfolio, project, presentations, drawing work and practical skills assessments.

### Where does it lead?

On successful completion of this course you have the opportunity to progress to the BSc (Hons) Top-up Degree in Motorsport Technology at University Centre Somerset or at a university of your choice.

Alternatively graduates can apply for a variety of roles in motorsport and other engineering disciplines. Recent graduates work with companies including McLaren GT, Bentley Motors, Jaguar Land Rover, MOD, Hyundai Motorsport (WRC), McLaren F1 and Neil Brown Engines.

### Did you know?

Over 1.5 million vehicles and 2.5 million engines are produced in the UK each year.



## ARRAN GABELL

### BSc (Hons) Motorsport Technology

*My lecturers were very knowledgeable and helped me to search for jobs and potential careers. Getting a 1st on my final dissertation project report for my Degree was great, it was a good accumulation of all my hard work and a nice way to recognise my achievements. The best thing about my job is traveling the world and being paid to work on race cars. I was part of a team that won the privateers LMP1 trophy last year in WEC. I have also worked in the 24 hour series, and club level racing.*

### Key Facts

**Duration full-time:** 1 year  
(apply via UCAS)

**Awarding body:**  
Oxford Brookes University

**Location:** Bridgwater

### Entry requirements

You will require a minimum of a Pass grade in the Foundation Degree in Motorsport Engineering (to include Motorsport Fluid Dynamics & Maths II) coupled with relevant prior qualifications including GCSEs. Entry may also be subject to interview. Applicants with a Higher National Diploma or similar Foundation Degree are also encouraged to apply.

Please see page 195 for our wider entry criteria.

**OXFORD  
BROOKES  
UNIVERSITY**

## BSc (Hons) Top-up Degree MOTORSPORT TECHNOLOGY

### Your course

This course has been developed as preparation for a range of technical and management careers in motorsport engineering. This course aims to build upon the knowledge and skills developed from studying our Foundation Degree. This programme is accredited by the IET (at Bridgwater and Brooklands) and by the IMechE (at Bridgwater) for partial IEng (further study).

### Example modules:

Over the duration of the course, you will study eight modules, compulsory units as well as optional, examples of which are:

- Vehicle Dynamics
- Advanced Automotive Electronics
- Motorsport Engine Technology
- CAD/CAM

### Teaching & assessment

You will undertake a range of classroom lectures, coupled with lab sessions. You will also be required to do a high amount of self-study in order to further research.

Assessment will be via a variety of methods including assignments, reports, dissertation, portfolio, and presentations.

### Where does it lead?

Upon completion you may progress to a range of Master's level courses that should result in a further year top-up, dependent upon study mode and compatibility of modules. You will also be well equipped to seek employment in the automotive and motorsport engineering industries.

Students will be able to apply for a range of graduate and junior roles within the motorsport and engineering industry.

### Did you know?

Every Formula One team has at some point employed a graduate of this Oxford Brookes University course.





## Higher & Degree Level Apprenticeships

# NUCLEAR ENGINEERING

(TO BE CONFIRMED)

### Key Facts

**Duration full-time:** up to 5 years, dependent on level and employer  
(apply to University Centre Somerset)

**Location:** Cannington

### Entry requirements

Typically, learners will require a National Certificate/Diploma in a numerate or engineering discipline with a merit profile, to include Maths, or equivalent qualifications.

For mature applicants we will accept a wide range of non-standard and professional qualifications and experience, but if candidates are unsure as to whether they qualify we encourage them to contact us.

Please see page 195 for our wider entry criteria.



### Your course

Higher and degree apprenticeships offer an exciting new way to enter professional careers and gain valuable work experience while achieving a degree-level qualification. This gives you a clear pathway to reach your career ambition in the workplace and will result in higher earning capacity, recognition and professional status.

Nuclear Engineering remains one of the UK's most important industries, offering a diverse range of challenging apprenticeship opportunities within the Nuclear and Energy sectors including power generation, decommissioning, nuclear new build, defence or renewable energy.

Apprenticeships delivered in the National College for Nuclear (southern hub) have been developed with industry partners, educational partners and government to deliver tomorrow's nuclear workforce.

If you are interested in one of these apprenticeship opportunities, please contact us to discuss in more detail.

### What does this course involve?

Apprentices will be employed for a minimum of 30 hours per week and will receive a salary while studying. Learning fits around that work commitment and requires flexible

learning through block release, distance, or blended learning.

The programme allows the apprentice to gain technical knowledge and real practical experience, along with behavioural and personal skills, required for their job and future career.

The apprenticeships have been designed to provide the manufacturing and engineering sector with high grade technicians and engineers who have practical skills, combined with a higher education qualification.

### Teaching & assessment

You are assessed on your knowledge and skills on an on-going basis and will have to demonstrate that you can meet the required standards throughout your training. There will be a mixture of coursework, projects, vivas, exams and end assessment.

### Where does it lead?

The Higher or Degree Apprenticeship will provide you with excellent career progression opportunity. Fully qualified engineers are always in demand, both at home and abroad. Degree Level students could progress onto suitable Masters Programmes and further industry specific professional training programmes.



# HEALTH, SOCIAL STUDIES AND SPORT

The Health & Social Care and Early Childhood Studies courses will be delivered in our specialist, newly designed University Centre Somerset at the Taunton Campus. These programmes are designed to enable progression to a very broad range of health and social care-related fields, including nursing, midwifery, occupational therapy, physiotherapy, social work, mental health, disability, elderly care and support and more.

Our Sport and Public Services programmes have long-standing relationships with elite clubs and organisations to ensure our students get real-world experience during their study.

All sports students receive discounted membership to a state-of-the-art gym as well as benefiting from other excellent facilities such as a 3G astro-turf pitch, a sports hall and an Outdoor Activity Centre.

SOCIAL CARE IS ONE OF THE FASTEST GROWING SECTORS IN THE UK AS MORE PEOPLE OF ALL AGES USE CARE OR SUPPORT SERVICES.



£49,545

POTENTIAL SALARY  
FOR A CARE MANAGER<sup>2</sup>

THE NHS DEALS WITH OVER  
**1 MILLION**  
PATIENTS EVERY 36 HOURS<sup>3</sup>



58,605

EMPLOYED IN ANCILLARY  
HEALTH CARE SERVICES<sup>1</sup>

<sup>1</sup> IBIS World | [www.ibisworld.co.uk](http://www.ibisworld.co.uk)

<sup>2</sup> EMSI data 2016

<sup>3</sup> NHS Confederation | [www.nhsconfed.org](http://www.nhsconfed.org)





## AARON SATURLEY

### BA (Hons) Early Childhood Studies

*I attended an Open Day and was impressed by the course and facilities, plus I live locally, so it's very convenient. The degree I'm studying for is validated by The Open University, meaning the degree is recognised but affordable.*

*The lecturers are really helpful with assignments and provide a variety of teaching styles, making lectures interesting. They are always available, either face-to-face or via email and get back to you really quickly. I feel that they care about us as individuals.*

*I'd like to become a teacher, so this qualification is really focussing my mind on that. Once I graduate, I plan to stay on and complete a PGCE to be ready to step into a classroom.*

#### Key Facts

**Duration full-time:** 3 years  
(apply via UCAS)

**Duration part-time:**  
Please contact the  
University Centre Somerset  
for further information

**Awarding body:**  
The Open University

**Location:** Taunton

#### Entry requirements

- 80 UCAS points at AS/  
A2 Level (minimum 32  
points at A2 level)

OR

- BTEC Qualifications  
(QCF) MMP (Extended),  
DM (Diploma), D\*D (90  
Credit Diploma)

OR

- Access to HE course in a  
relevant subject area

You will be required to  
undergo a Disclosure and  
Barring Service check  
prior to commencing any  
work placement.

Please see page 195 for  
our wider entry criteria.

This course is delivered on-  
site each week across the  
academic year



The Open  
University

## BA (Hons) EARLY CHILDHOOD STUDIES

#### Your course

Whether experienced in the early  
years sector or not, if you are  
committed to making a difference  
to the lives of children, young  
people and families; this degree  
in Early Childhood Studies is the  
perfect foundation for your career.  
While studying our degree, you  
will develop the skills as a critically  
reflective practitioner and learn to  
be a creative and visionary leader  
needed for effective practice  
in a diverse, multidisciplinary  
environment.

#### Example modules:

##### Practitioner Pathway

This pathway is for Practitioners  
who have already achieved a  
Level 3 vocationally-related  
qualification, and who are working  
within an early years or educational  
setting for at least one day per  
week, either as an employee  
or volunteer.

##### Non-Practitioner Pathway

This pathway is for applicants who  
do not possess a vocationally-  
related qualification. Attendance  
will be for two days per week, over  
a 32 week academic year. During  
Year 1, you will have an opportunity  
to develop your vocational skills  
through two work placements – in  
a school and an early years setting.  
Your vocational skills will be further  
enhanced during Year 2 where  
you will be assessed against the  
National Occupational Standards,  
culminating in the achievement

of a Level 3 Diploma for the Early  
Years Practitioner or Level 3  
Diploma in Specialist Support for  
Teaching and Learning in Schools.  
The modules studied over the three  
years may include:

- The Reflective Practitioner
- The Child in Society
- Introduction to Leadership and  
Management
- Child Health and Wellbeing
- Dissertation: Primary research or  
Secondary research

#### Teaching & assessment

There are no examinations on  
this programme, each module is  
assessed by means of assignments  
– reflective essay, learning and  
development resources, and  
presentations. Teaching sessions  
take the form of short lectures,  
supervised discussions, small  
group work and guest speakers.

#### Where does it lead?

You could secure employment  
in family support and projects  
working in a range of early years  
settings – children's centre worker,  
home/school liaison officer,  
early years practitioner or a role  
within a primary school. The  
Honours Degree could also lead  
to management and leadership  
roles within early years settings,  
children's centres and schools.



### Key Facts

**Duration full-time:** 2 years  
(apply via UCAS)

**Duration part-time:** Please  
contact the University Centre  
Somerset for further information

**Awarding body:**  
The Open University

**Location:** Taunton

### Entry requirements

Please see entry  
requirements on page 31.

- 64 UCAS points at AS/  
A2 Level (minimum 32  
points at A2 level)
- BTEC Qualifications  
(QCF) MPP (Extended),  
MM (Diploma), DM (90  
Credit Diploma)
- Access to HE course in  
a relevant subject area  
or equivalent

You will be required to  
undergo a Disclosure and  
Barring Service check  
prior to commencing any  
work placement.

Please see page 195 for  
our wider entry criteria.

This course is delivered on-  
site each week across the  
academic year



## Foundation Degree EARLY CHILDHOOD STUDIES (SUBJECT TO VALIDATION)

### Your course

Whether experienced in the  
early years sector or not, if you  
are committed to making a  
difference to the lives of children,  
young people and families, this  
Foundation Degree in Early  
Childhood Studies is the perfect  
underpinning for your career.

Extensive research has been  
conducted throughout the  
development of this programme  
through the engagement of early  
years' employers, head teachers,  
parents, children, early years and  
primary school practitioners and  
recent and past graduates.

### Practitioner Pathway

This pathway is for Practitioners  
who have already achieved a Level  
3 vocationally-related qualification,  
and who are working within an  
early years or educational setting  
for at least one day per week,  
either as an employee or volunteer.

### Non-Practitioner Pathway

This pathway is for applicants who  
do not possess a vocationally-  
related qualification. During Year  
1, you will have an opportunity  
to develop your vocational skills  
through two work placements – in  
a school and an early years setting.  
Your vocational skills will be further  
enhanced during Year 2 where  
you will be assessed against the  
National Occupational Standards,  
culminating in the achievement of a  
Level 3 Diploma for the Early Years

Practitioner or Level 3 Diploma in  
Specialist Support for Teaching and  
Learning in Schools.

### Example modules:

The modules studied over the two  
years will include:

- The Reflective Practitioner
- The Child in Society
- Language and Literacy  
Development
- Introduction to Leadership and  
Management
- Child Health and Wellbeing
- Working with Children and  
Families

### Teaching & assessment

There are no examinations on  
this programme, each module  
is assessed by means of  
assignments – reflective essay,  
production of children's learning  
and development resources, and  
presentations.

### Where does it lead?

This Foundation Degree will open  
up a variety of career paths and  
can lead to employment in family  
support and projects working in  
a range of early years settings -  
children's centre worker, home/  
school liaison officer, early years  
practitioner or a role within a  
primary school.





## BA (Hons) Top-up Degree **EARLY CHILDHOOD STUDIES**

### Key Facts

**Duration full-time:** 1 year  
(apply via UCAS)

**Awarding body:**  
Plymouth University

**Location:** Taunton

### Entry requirements

Please see entry requirements on page 31.

Applicants must have a Foundation Degree, HND or equivalent Level 5 qualification in an appropriate discipline. Pathway 1 – Applicants must also be employed or volunteering in a relevant setting i.e. primary school, nursery, children's centre for a minimum of one day each week.

You will be required to undergo a Disclosure and Barring Service check prior to commencing any work placement.

Please see page 195 for our wider entry criteria.

**IN  
PARTNERSHIP  
WITH  
PLYMOUTH  
UNIVERSITY**

### Your course

If you are an experienced early years practitioner, and are committed to making a difference to the lives of children, young people and families, this Top-up Degree in Early Childhood Studies is the perfect programme to enhance your career opportunities. You will develop skills as a critically reflective practitioner and learn to be a visionary leader needed for effective practice in a diverse, multidisciplinary environment.

### Example modules:

The course includes modules in the following areas:

- Adult Concepts
- Current Issues
- Independent Study
- Work-based Learning
- Dissertation

There are two pathways for this programme.

### Practitioner Pathway

You will need to be working within an early years or education setting for at least one day per week, either as an employee or volunteer.

### Non-Practitioner Pathway

This pathway is suitable for applicants who do not work within the early years or education sector.

### Teaching & assessment

There are no examinations on this programme, each module is assessed by means of assignments – reflective essay, production of children's learning and development resources, and presentations.

### Where does it lead?

You could secure employment in family support and projects working in a range of early years settings – children's centre worker, Home/School Liaison Officer, Early Years Practitioner or a role within a primary school. The Honours Degree could also lead to management and leadership roles within early years settings, children's centres and schools.



## DOROTHY RADFORD

### FdA Health & Social Care Studies

*I chose the University Centre Somerset because it has a great reputation and I was also able to skip the first year because my previous NVQs and the QCF Level 5 qualifications were accredited.*

*The course is terrific. There are about 12 in my group and they've made me feel very welcome. The lecturers are phenomenal too. They never belittle us, have infinite patience and invite us to raise different perspectives during discussions.*

*The course allows time for self-directed study and reflection. We're adults, so the responsibility is on us to be motivated and we're treated as such. I haven't been in a classroom setting for years and as a mature student, I'd recommend it to anyone – you're never too old to learn.*

*I'm already employed in a management position, but am interested in studying the top-up year to complete a BA (Hons) for personal growth and satisfaction, rather than career development.*

### Key Facts

**Duration full-time:** 3 years  
(apply via UCAS)

**Duration part-time:**  
Please contact the  
University Centre Somerset  
for further information

**Awarding body:**  
The Open University

**Location:** Taunton

### Entry requirements

Please see entry requirements on page 31.

- 80 UCAS points at AS/A2 Level (minimum 32 points at A2 level)
- BTEC Qualifications (QCF) MMP (Extended), DM (Diploma), D\*D (90 Credit Diploma)
- Access to HE course in a relevant subject area

You will be required to undergo a Disclosure and Barring Service check prior to commencing any work placement.

Please see page 195 for our wider entry criteria.

This course is delivered on-site each week across the academic year



## BA (Hons) HEALTH & SOCIAL CARE

### Your course

Whether experienced in the health and social care sector or not, this popular Degree will develop your skills and knowledge of social care through a blend of work-based learning and classroom teaching.

This Degree provides you with a sound and critical understanding of health and social care policy, theory and practice, as well as the skills you need for effective practice in a diverse, multidisciplinary environment. You will also learn how ethical, legal, social, economic and political factors influence the provision and development of services; and gain the critical and analytical skills that underpin evidence-based practice.

### Example modules:

#### Practitioner Pathway

This pathway is for Practitioners who have already achieved a Level 3 vocationally-related qualification and who are working within a health and social care setting for at least one day per week, either as an employee or volunteer.

#### Non-Practitioner Pathway

This pathway is for applicants who do not possess a vocationally-related qualification. During Year 1, you will have an opportunity to develop your vocational skills through two work placements – in a children's and an adult setting.

Your vocational skills will be further enhanced during Year 2 where you will be assessed against the National Occupational Standards, leading to the achievement of a Level 3 qualification in Health and Social Care.

### Teaching & assessment

Assessment is largely via coursework, tests of knowledge and understanding and written assignments – reflective essays, project reports and presentations. Teaching sessions take the form of short lectures, supervised discussions, small group work and guest speakers.

### Where does it lead?

These courses open up a variety of career paths in the health and social care sectors, and give you the potential to work in a managerial or supervisory capacity. You could become a Registered Manager in a children's or adult setting, a Family Support Worker, Residential Care Worker – Children and Adult Services, Youth Worker, Learning Support Worker or Assistant Social Worker.





## Foundation Degree HEALTH & SOCIAL CARE

### Key Facts

**Duration full-time:** 2 years  
(apply via UCAS)

**Duration part-time:**  
Please contact the  
University Centre Somerset  
for further information

**Awarding body:**  
The Open University

**Location:** Taunton

### Entry requirements

To commence the FD  
candidates must have:

- 64 UCAS points at AS/A2 Level (minimum 32 points at A2 level)
- BTEC Qualifications (QCF) MPP (Extended), MM (Diploma), DM (90 Credit Diploma)
- Access to HE course in a relevant subject area

You will be required to undergo a Disclosure and Barring Service check prior to commencing any work placement.

Please see page 195 for our wider entry criteria.

This course is delivered on-site each week across the academic year



### Your course

Whether experienced in the health and social care sector or not, this popular Foundation Degree will develop your skills and knowledge of social care through a blend of work-based learning and classroom teaching.

This course provides you with a sound and critical understanding of health and social care policy, theory and practice, as well as the skills you need for effective practice in a diverse, multidisciplinary environment. You will also learn how ethical, legal, social, economic and political factors influence the provision and development of services.

### Example modules:

#### Practitioner Pathway

This pathway is for Practitioners who have already achieved A Level 3 vocationally-related qualification, and who are working within a health and social care setting for at least one day per week, either as an employee or volunteer.

#### Non-Practitioner Pathway

This pathway is for applicants who do not possess a vocationally-related qualification. During Year 1, you will have an opportunity to develop your vocational skills through two work placements. Your vocational skills will be further enhanced during Year 2 where you will be assessed against the National Occupational Standards, leading to the achievement of a

Level 3 qualification in Health and Social Care.

Modules include:

- Interpersonal Skills and Communication Strategies
- Applied Human Development
- Values, Morals and Ethics
- Managing Care Settings
- Mental Health and Wellbeing

### Teaching & assessment

Assessment is largely via coursework, tests of knowledge and understanding and written assignments – reflective essays, project reports, and presentations. Teaching sessions take the form of short lectures, supervised discussions, small group work and guest speakers.

### Where does it lead?

On completion of the Foundation Degree you may decide to top-up to the full BSc (Hons) at University Centre Somerset. Alternatively, the qualification will open up a variety of career paths in the health and social care sectors, and give you the potential to work in a managerial or supervisory capacity.



## MATTHEW STACEY

### FdSc Healthcare Practice

#### Assistant Practitioner | Musgrove Park Hospital

*Prior to studying, I worked on a medical ward at Taunton's Musgrove Park Hospital as a Senior Healthcare Assistant. I've been at the trust for 13 years and was seconded by my department in order to complete the two year Foundation Degree. I wanted to progress professionally and improve the service I provide to patients.*

*After graduation, I successfully interviewed for the post of Assistant Practitioner on the Pre-operative Assessment Clinic. This is a new post at Musgrove Park Hospital, mirroring other trusts in England and Wales. The University Centre Somerset and Plymouth University offered us a very practical, high quality programme to support our practice.*

*Plymouth University in partnership with University Centre Somerset selected candidates with good communication skills and caring natures who work in care settings. They taught us to rationalise why we do what we do – theory, policy, practice, principle. We've become more self-aware and encouraged to look at how we can improve our service.*

*Through studying law and ethics, we are encouraged to become advocates for our patients and provide a more evidenced based practice. The course is challenging, but by working alongside doctors, nurses, therapists and other carers while studying, my practical skills are enriched with academic rigour.*

*The course has given me a hunger to learn more, so now my mornings are filled with self-directed study. I love working here and hope to be at this Trust until I retire. If, in the future, I decide to progress to a nursing degree, the strong partnership between the University Centre Somerset and the NHS offers me that chance.*

*If you work in care and want to deepen your knowledge, my advice is to go for it. It's so rewarding when you accomplish it and exciting opportunities present themselves. The course has encouraged me to move into teaching and working with learning and development, which I would never have considered before studying.*

### Key Facts

**Duration full-time:** 1 year  
(apply via UCAS)

**Awarding body:**  
Plymouth University

**Location:** Taunton

### Entry requirements

Applicants must have a Foundation Degree, HND or equivalent Level 5 qualification in an appropriate discipline.

You will be required to undergo a Disclosure and Barring Service check prior to commencing any work placement.

Please see page 195 for our wider entry criteria.

**IN  
PARTNERSHIP  
WITH  
PLYMOUTH  
UNIVERSITY**

## BSc (Hons) Top-up Degree HEALTH & SOCIAL CARE MANAGEMENT

### Your course

This degree provides you with a sound and critical understanding of health and social care policy, theory and practice, as well as the skills you need for effective practice in a diverse, multidisciplinary environment. You will also learn how ethical, legal, social, economic and political factors influence the provision and development of services; and gain the critical and analytical skills that underpin evidence-based practice. In addition, you will have the opportunity to research areas of personal interest in the Health and Social Care sector.

### Example modules may include:

During this course you will cover a range of topics which may include:

- Advanced Interpersonal Skills
- Critical Practice
- Dissertation
- Evidence in Practice

### Teaching & assessment

Assessment is largely via coursework, tests of knowledge and understanding and written assignments – reflective essays, project reports, and presentations. We offer comprehensive study skills support throughout your time at the University Centre Somerset in order to help maximise your chances of success.

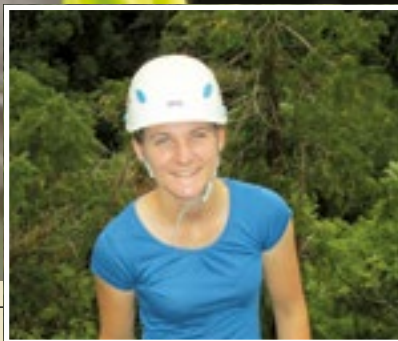
Teaching sessions take the form of short lectures, supervised discussions, small group work and guest speakers.

### Where does it lead?

This course will open up a variety of career paths in the health and social care sectors, and give you the potential to work in a managerial or supervisory capacity. You could become a Registered Manager in a children's or adult setting, a Family Support Worker, Residential Care Worker – Children and Adult Services, Youth Worker, Learning Support Worker or Assistant Social Worker. Many of our graduates progress to do post-graduate qualifications in teacher training and social work.

This degree offers you a relevant and up to date Higher Education experience that reflects ongoing developments in today's fast-changing health and care sector.





## HANNAH FORBES

### Public Services with Outdoor Education Foundation Degree

*My favourite moment whilst studying for my Foundation Degree has to be our residential, where we paddled a stretch of the Ardeche River, mountain biked, climbed and walked in the South of France. This was a great experience to show how important team work is with the public services industry. On completion of my course I went to study the Top-up year at Plymouth University where I left with a 2:1 BSc (Hons) Degree.*

### Key Facts

**Duration full-time:** 2 years  
(apply via UCAS)

**Duration part-time:** 4 years  
part-time  
(apply to University Centre  
Somerset)

**Awarding body:**  
Plymouth University

**Location:** Taunton

### Entry requirements

You will require a minimum of 48 (previously 120) UCAS tariff points from a full Level 3 qualification in a relevant subject area. Mature applicants with relevant experience who do not have the stated entry requirements are encouraged to apply.

Please see page 195 for our wider entry criteria.

**IN  
PARTNERSHIP  
WITH  
PLYMOUTH  
UNIVERSITY**

## Foundation Degree PUBLIC SERVICES AND CRIMINOLOGY

(SUBJECT TO VALIDATION)

### Your course

This programme is designed for students who want to work in the public services sector and for those who have an interest in entering the world of criminology and related public service employment.

It will allow students to understand how society functions and how criminals are conditioned by the environment in which they live. The course will also cover the role of public services in shaping society and how information can be used to effectively manage the fight against crime.

Students will build their practical knowledge of the subject and develop their theoretical skills which will allow them to progress onto further study or a career in public services.

### Example modules:

Over the duration of this course you may study modules including:

- Introduction to the Criminal Justice System
- Crime in Context
- The Mind of a Criminal
- Government & the Public Services
- Victims, Victimology & Restorative Justice

You will also have the opportunity to complete a work-based learning opportunity, join the 999 Academy and meet guest speakers from the public services.

### Teaching & assessment

The course is delivered by various types of learning, including lectures, seminars presentations and practicals.

Assessment will be through assignments or essays, portfolios, practical assessments and presentations.

### Where does it lead?

Upon successful completion of this course you can top-up to a full Honours Degree by studying the BSc (Hons) Public Services (Policing) Top-up at Plymouth University or the BSc (Hons) Public Services (Top-up) at Exeter College. Alternative options are available with other Universities.

Many of our students have taken up employment in the public services sector including the Police, Fire and Ambulance Services, HM Forces, HM Prison Service and outdoor education and activity centres.

**Did you know?**  
The UK sports industry  
is estimated to be worth  
£23.8bn.



## Tom Britton

### Sports Science HND

Tom has progressed to Plymouth University to study Strength and Conditioning.

*My favourite moment while at University Centre Somerset was being part of Team BC Activators as Head of Delivery. This position required me to run the sport sessions, encourage others to take up exercise, while gaining planning, organisational and coaching skills. This has complemented my area of study as I could draw on modules from my course such as health promotion, sport and society and sports coaching.*

### Key Facts

**Duration full-time:** 2 years  
(apply via UCAS)

**Duration part-time:** 4 years  
(apply to University Centre  
Somerset)

**Awarding body:**  
Oxford Brookes University

**Location:** Taunton

### Entry requirements

You will require a minimum of 48 (previously 120) UCAS tariff points from a full Level 3 qualification in a relevant subject area. Mature applicants with relevant experience who do not have the stated entry requirements are encouraged to apply.

Please see page 195 for our wider entry criteria.

OXFORD  
BROOKES  
UNIVERSITY

## Foundation Degree SPORTS SCIENCE WITH SPORTS COACHING EDUCATION

### Your course

The course is designed to provide students with a detailed understanding of the different pathways available in the world of sport. You will have the option of following either the Sports Science or Sports Coaching Education route. This course will provide you with invaluable experience in the world of sport and will also allow you to undertake additional qualifications. You may also complete a number of work placements/experiences which will help you to gain a good understanding of the real life context of your studies and to apply theory to practical situations.

### Example modules:

Throughout the duration of the course you may study subjects including Exercise Physiology & Anatomy, Skill in Sport, Learning and Mechanics, Sociology in Sport, Nutrition in Sport, Applied Sport Physiology, Biomechanics and Health Behaviour. Assessment will be via assignments, essays, reports, projects, presentations and oral assessment.

### Teaching & assessment

Lectures will be both practical and theoretical, including group work and problem solving exercises. You will be expected to spend a large amount of time outside the classroom for background reading to support your coursework assessment. In addition you will be required to undertake work placements as part of the programme.

### Where does it lead?

If you would like to continue your education on completion of this course, you can continue to Oxford Brookes University to study the BSc (Hons) Sport and Exercise Science, or the BSc (Hons) Sport, Coaching and Physical Education, or apply to another university of your choice.

This course will help students progress in a variety of careers throughout the sporting industry, including sports development, sports coaching, PE teaching, sports/laboratory technician, leisure and recreation management, working for national governing bodies and county sports partnerships, to name but a few.



# LAND-BASED STUDIES

**Our Cannington Campus hosts our land-based courses and with the outstanding facilities available it's definitely worth a visit.**

The countryside location of the Cannington Campus makes it an ideal choice for students interested in a land-based education. In recent years over £10 million has been invested in improving the facilities and residential accommodation and the resources for land-based training are now considered to be among the best in the country, providing students with state-of-the-art surroundings for learning and practising their skills. These facilities include a 180 hectare working farm with our new Agriculture Innovation Centre, the Animal Management Centre, Equestrian Centre with indoor and outdoor arenas, the historical Walled Gardens of Cannington, and a nine hole 18 tee golf course.



THE ANIMAL CARE INDUSTRY IS WORTH £1 BILLION TO THE UK ECONOMY. IT HAS 13,000 BUSINESSES, 78,000 EMPLOYEES<sup>1</sup>

FARM MANAGERS CAN EARN MORE THAN

**£50,000<sup>1</sup>**

**£25,578**

IS THE AVERAGE SALARY FOR PEOPLE WHO WORK ON FARMS<sup>2</sup>

THE UK HAS **142,000** FARM BUSINESSES<sup>4</sup>

THE FOOD AND FARMING SECTOR EMPLOYS

**3.5 MILLION** 

PEOPLE IN THE UK WHICH IS NEARLY 1 IN EVERY 7 JOBS<sup>5</sup>

<sup>1</sup> [nationalcareersservice.direct.gov.uk](http://nationalcareersservice.direct.gov.uk)

<sup>2</sup> [www.fwi.co.uk](http://www.fwi.co.uk)

<sup>3</sup> [www.lantra.co.uk/careers/animal-care](http://www.lantra.co.uk/careers/animal-care)

<sup>4</sup> NFU Online

<sup>5</sup> [www.brightcrop.org.uk](http://www.brightcrop.org.uk)





### Key Facts

**Duration full-time:** 2 years  
(apply via UCAS)

**Duration part-time:** 3 years  
(apply to University Centre  
Somerset)

**Awarding body:**  
Plymouth University

**Location:** Cannington

### Entry requirements

You will require a minimum of 48 UCAS tariff points from a Level 3 qualification in a relevant subject area. Mature applicants with relevant experience who do not have the stated entry requirements are encouraged to apply.

Please see page 195 for our wider entry criteria.

**IN  
PARTNERSHIP  
WITH  
PLYMOUTH  
UNIVERSITY**

## Foundation Degree **AGRICULTURAL MANAGEMENT**

### Your course

The importance of agriculture and food to the nation has been clearly demonstrated over the last few years. Where the country gets its food and how it has been produced is becoming ever more complex and with it comes industry demand for qualified recruits. Agriculture and Food are big businesses in the UK and abroad and once studied can be your passport into employment or further enrichment overseas.

The two day full-time study structure will allow students to travel longer distances to travel with just one overnight stay. Part-time (one day) is also available. Both modes of study will enable students to continue in employment alongside study.

### Example modules:

The course covers technical and managerial aspects of modern agriculture and areas of study may include:

- Agricultural Finance and Technology
- Animal Health & Food Safety
- Crop Management & Sustainable Processes
- Livestock Management
- The Environment and the Law

### Teaching & assessment

Teaching methods will mainly involve lectures, seminars and demonstrations. You will learn via a combination of methods which will include farm-based investigations, fieldwork and visits.

### Where does it lead?

Successful completion of the Foundation Degree will provide you with the opportunity to progress and top-up your qualification to a BSc (Hons). University Centre Somerset offers a choice of two Plymouth University qualifications: BSc (Hons) Agricultural Management and BSc (Hons) Food Chain Management.

This course will prepare you well for employment in the industry in positions such as assistant farm manager, unit manager, farm contractor or herdsman.

### Did you know?

Farming and Food currently contributes £108 billion per year to the UK economy. 1 in 8 of the nation's workforce are employed within these industries.





### Key Facts

**Duration full-time:** 1 year  
(apply via UCAS)

**Duration part-time:** 2 years  
(apply to University Centre Somerset)

**Awarding body:**  
Plymouth University

**Location:** Cannington

### Entry requirements

Foundation Degree in Agricultural Management at University Centre Somerset or achieving this level in a relevant qualification elsewhere.

Please see page 195 for our wider entry criteria.

**IN  
PARTNERSHIP  
WITH  
PLYMOUTH  
UNIVERSITY**

## BSc (Hons) Top-up Degree **AGRICULTURAL MANAGEMENT**

### Your course

The BSc (Hons) in Agricultural Management aims to provide students with a learning environment which builds on the platform of the University Centre Somerset Foundation Degree. Whether you are focused on farm management or an associated industry; this course aims to supply graduates with the opportunity to develop systematic understanding and detailed knowledge of the key concepts, contexts and technologies shaping the developments in the agrifood sector.

The two day full-time study structure will allow students to travel longer distances to travel with just one overnight stay. Part-time (one day) is also available. Both modes of study will enable students to continue in employment alongside study.

Students will get hands-on experience working at our 200 hectare working farm (Rodway Farm pictured left), helping to prepare them for the world of work after graduation.

### Example modules:

The course covers technical and managerial aspects of modern agriculture and areas of study may include:

- Agricultural Business Opportunities and Marketing
- Agricultural Business Management

- Strategic & Human Resource Management
- Data Synthesis & Management in the Agrifood Sector

### Teaching & assessment

Teaching methods will mainly involve lectures, seminars and demonstrations, via a combination of different practical and theoretical methods which will include farm-based investigations, fieldwork, guided self-study and visits.

### Where does it lead?

Successful completion of the Degree will provide you with the opportunity to progress to employment or further study in an agriculture/food related subject.

Upon graduation this course allows you to compete for a wide range of post-graduate programmes in the industry. Alternatively it will prepare you for positions in the industry such as: farm manager, agricultural accountant, consultant or senior herdsman.





### Key Facts

**Duration full-time:** 2 years  
(apply via UCAS)

**Duration part-time:** 3 years  
(apply to University Centre  
Somerset)

**Awarding body:**  
Oxford Brookes University

**Location:** Cannington Campus

### Entry requirements

You will require a minimum of 48 UCAS tariff points from a Level 3 qualification in a relevant subject area. Mature applicants with relevant experience who do not have the stated entry requirements are encouraged to apply.

Please see page 195 for our wider entry criteria.

## Foundation Degree ANIMAL CONSERVATION

(SUBJECT TO RE-VALIDATION)

### Your course

You will explore the possible conflict between man and animals through areas such as ecotourism, cultural differences and environmental management strategies. You will be expected to have an interest in specific animal populations and will be encouraged to undertake vocational training alongside focused academic study.

### Example modules:

There is a mixture of compulsory and optional modules which may include:

- Global Biodiversity and Conservation
- Ecological Principles
- Biological Classification and Evolution
- Behavioural Ecology
- Animals in Society

### Teaching & assessment

Students will attend lectures, seminars, tutorials and practicals. Some modules require you to undertake directed self-study with tutor support. Guest speakers provide a workplace perspective where appropriate. In addition there are optional day trips to organisations, study tours and an international study experience.

Modules are assessed via coursework or a combination of

coursework and examination.

Coursework comprises written/practical reports, tests, case studies, essays, presentations and vivas.

### Where does it lead?

On completion of this course you can progress to the BSc (Hons) Animal Conservation Top-up Degree at University Centre Somerset or you can apply to study at a university of your choice.

This qualification could help you gain employment within a variety of countryside and conservation bodies, wildlife organisations and educational roles.





### Key Facts

**Duration full-time:** 1 year  
(apply via UCAS)

**Awarding body:**  
Oxford Brookes University

**Location:** Cannington

### Entry requirements

You will require an HND or Foundation Degree in a related subject.

Please see page 195 for our wider entry criteria.

## BSc (Hons) Top-up Degree **ANIMAL CONSERVATION**

(SUBJECT TO RE-VALIDATION)

### Your course

The BSc (Hons) in Animal Conservation Top-up will build on your previous knowledge by developing your investigative and analytical skills. It aims to provide students with a learning environment which promotes the theoretical and practical aspects of the management of animal populations and ecosystems through the development of ecological surveying, environmental control and education. Current threats to conservation through ecological and man-made pressures are also evaluated.

A key feature of the programme is the emphasis on practical opportunities for work-based learning which take advantage of the University Centre Somerset's close links to the animal conservation industry (both environmental and zoological). In addition practical learning can be facilitated through excellent animal management facilities (Animal Management Centre, Equestrian Centre and Rodway Farm) and the proximity to a wide range of external natural resources and habitats (including the Somerset levels, Jurassic coastline, Exmoor/Dartmoor and Steart Peninsula (EA/WWT)).

### Example modules:

You will study five core modules and have the opportunity to select one of two optional modules which may include:

- Pollution and Conservation
- Wildlife Conservation and Biodiversity
- Advanced Ecological Survey Techniques
- Current Affairs (option)
- Aquatic Management and Conservation (option)

### Teaching & assessment

You will be required to attend a series of lectures, seminars, tutorials and practicals with tutor support. Guest speakers from a variety of conservation-based organisations may deliver information to provide you with an industry perspective.

The modules are either assessed via 100% coursework (e.g. dissertation) or a combination of coursework and formal examination. Coursework comprises written/practical reports, in-class tests, case studies, essays, oral presentations, vivas and posters.

### Where does it lead?

Upon completion of the BSc (Hons), a Master's Degree or PhD would be an option.

This course may help you gain employment within a variety of national and international countryside and conservation bodies, wildlife organisations, education roles and voluntary bodies.



### Key Facts

**Duration full-time:** 2 years  
(apply via UCAS)

**Duration part-time:** 3 years  
(apply to University Centre Somerset)

**Awarding body:**  
Oxford Brookes University

**Location:** Cannington

### Entry requirements

You will require a minimum of 48 UCAS tariff points from a Level 3 qualification in a relevant subject area. Mature applicants with relevant experience who do not have the stated entry requirements are encouraged to apply.

Please see page 195 for our wider entry criteria.

**OXFORD  
BROOKES  
UNIVERSITY**

## Foundation Degree **APPLIED ANIMAL MANAGEMENT**

(SUBJECT TO RE-VALIDATION)

### Your course

The Foundation Degree in Applied Animal Management will increase your appreciation and understanding of current issues and developments in animal management and of the practical techniques involved in the study of the different component disciplines. This course concentrates on a wide variety of topics such as animal physiology, welfare, laboratory analytical skills, enclosure design, research project and management of domestic, production or zoological animal collections

A key feature of the programme is the emphasis on practical opportunities for work based learning which will take advantage of our close links to the animal management Industry. In addition, practical learning will be facilitated, where appropriate, through excellent animal management facilities (Animal Management Centre, Equestrian Centre and Rodway Farm).

### Example modules include:

You will study six core modules and one optional module each year, which may include:

- Animal Anatomy and Physiology
- Applied Animal Management
- Animal Husbandry and Nutrition
- Laboratory and Veterinary Analytical Techniques
- Animals in Society

### Teaching & assessment

You will attend a series of lectures, seminars, tutorials and practical sessions; some modules require self-study. Guest speakers may deliver industry relevant information. In addition there are optional day trips, study tour and an international study experience.

Modules are assessed via 100% coursework or a combination of coursework and formal examination. Coursework comprises of written/ practical essays/reports, in-class tests, case studies, presentations and vivas.

### Where does it lead?

On successful completion of this course you have the opportunity to progress to the BSc (Hons) Applied Animal Management Top-up Degree at University Centre Somerset or you can choose to study at a university of your choice.

This course could help you gain employment within a variety of zoological institutions, wildlife rehabilitation centres, local wildlife sanctuaries and animal production facilities.





## CHARLOTTE WADE

### Applied Animal Management BSc (Hons) Top-up Degree

*I have learnt so much during my time here. I had an unusual route into education, I was home schooled right up to my entry into College. The College environment was poles apart to what I had been used to.*

*My dyslexia wasn't formally diagnosed until I came to the University Centre Somerset, then I was supplied with an LSA who I met with to discuss my written work, as I find it easier to talk it through rather than write straight away.*

*This has been instrumental to my success. I never believed I was capable of doing a degree, the staff have all been incredibly supportive and encouraging and gave me the self-confidence and belief to do it!*

### Key Facts

**Duration full-time:** 1 year  
(apply via UCAS)

**Awarding body:**  
Oxford Brookes University

**Location:** Cannington

### Entry requirements

You will require an HND or Foundation Degree in a related subject.

Please see page 195 for our wider entry criteria.

OXFORD  
BROOKES  
UNIVERSITY

## BSc (Hons) Top-up Degree APPLIED ANIMAL MANAGEMENT

(SUBJECT TO RE-VALIDATION)

### Your course

This is an ideal programme for graduates of an animal-based Foundation Degree or HND programme wishing to further their study to gain a full Honours Degree. This BSc (Hons) Top-up concentrates on aspects of animal management such as the psychology of animals, disease/welfare management and behaviour in a range of domestic, production or zoological species.

The modules you take in the top-up year build on your previous knowledge by developing your investigative and analytical skills.

### Example modules:

There are five core modules and two option modules which may include:

- Animal Behavioural Management
- Veterinary Microbial Pathogenicity
- Animal Psychology
- Wildlife Conservation and Biodiversity (option)
- Aquatic Conservation and Management (option)

### Teaching & assessment

You will be required to attend a series of lectures, tutorials, seminars and practical sessions; some modules require self-study.

Guest speakers from a variety of animal-based organisations may deliver information to provide you with an industry perspective. In addition optional day trips and an international study experience may be offered.

The modules are either assessed via 100% coursework (for example your dissertation), or via a combination of coursework and formal examinations. Coursework comprises written and practical reports, in-class tests, case studies, essays, oral presentations, vivas and the production of posters.

### Where does it lead?

The BSc (Hons) Top-up Degree in Applied Animal Management could help you gain employment within national and international animal welfare establishments, zoological collections, wildlife organisations or animal production facilities. Previous students have gained employment in areas of the animal industries outlined and in addition some have been employed as research technicians or lecturers in animal based subjects.



### Key Facts

**Duration full-time:** 2 years  
(apply via UCAS)

**Awarding body:**  
Oxford Brookes University

**Location:** Cannington

### Entry requirements

A minimum of 48 UCAS points from a full Level 3 qualification in a relevant subject area.

Mature applicants with relevant experience who do not have the stated entry requirements are encouraged to apply.

**OXFORD  
BROOKES  
UNIVERSITY**

## Foundation Degree **COUNTRYSIDE MANAGEMENT** (SUBJECT TO RE-VALIDATION)\*

### Your course

The course is suitable for college leavers, mature students, career changers and individuals wishing to improve their academic qualifications leading to further study.

With a wide range of industry opportunities and careers open to cater for wide interests, there is always something on offer; whether it's practical conservation work onsite; environmental science; ecological surveys or woodland management.

Access to excellent on-site and off-site resources including our own wildlife and wetland area, the nature reserves of the Somerset Levels, Exmoor National Park, The Quantock and Mendip Hills, WWT Steart Marshes Project and many more.

### Example modules:

- Business and the workplace
- Introduction to habitats
- Landscape evolution and interpretation
- Biological classification
- Plant and soil science
- Research project

### Teaching & assessment

The course is delivered through a range of taught lectures, tutorials and seminars, with some modules including elements of blended learning. Field trips and visits form part of the curriculum, and in some cases are linked to assignments. The assessment for modules can be 100% coursework, including presentations, written and practical work, creation of a portfolio, or a combination of coursework and exams.

### Where does it lead?

Further study could lead to an Honours Degree in Countryside Management validated through Oxford Brookes, and employment opportunities exist through a range of countryside and conservation bodies and organisations.

Previous students have gained employment in both public and private sectors and in addition self-employment.

\*This course is currently going through an exciting revalidation process to develop new pathways in line with some of our other HE courses. As a result some module content and/or the title of the programme may change. Contact us for further details.





### Key Facts

**Duration full-time:** 1 year  
(apply via UCAS)

**Awarding body:**  
Oxford Brookes University

**Location:** Cannington

### Entry requirements

A minimum of 48 UCAS points from a full Level 3 qualification in a relevant subject area.

Mature applicants with relevant experience who do not have the stated entry requirements are encouraged to apply.

OXFORD  
BROOKES  
UNIVERSITY

## BSc (Hons) Top-up Degree **COUNTRYSIDE MANAGEMENT** (SUBJECT TO RE-VALIDATION)\*

### Your course

In partnership with Oxford Brookes University, University Centre Somerset offers the BSc (Hons) Top-up in Countryside Management. This provides an ideal progression route for those completing the Foundation Degree. It is designed to provide more specialist expertise for those already working in countryside management or in environmental conservation. For those already working in the industry it is an ideal opportunity to expand your knowledge to enhance career prospects.

### Example modules:

- Sustainable Environmental Management
- Visitor Management and Education
- Ecological Survey techniques
- Current Affairs
- Animal Conservation and Biodiversity

Much of your learning experience will take place off-site gaining actual experience with all our local wildlife and countryside partners. Relevant field trips will also form an essential part of the learning experience.

### Teaching & assessment

Units are assessed using 100% coursework or a combination of 40% examinations and 60% coursework. Coursework elements

include written reports, poster work and oral presentations.

You will be required to attend timetabled lectures, seminars and practical sessions; modules require self-study appropriate to the level. Guest speakers from a variety of conservation organisations will deliver workshops and presentations to provide you with an industry perspective.

### Where does it lead?

On successful completion of the BSc (Hons) top-up degree in Countryside Management, you have the option of entering employment, further academic study for a Masters Degree or PhD, and combination thereof.

This course could help you gain employment within a variety of countryside and conservation bodies, wildlife organisations, education roles and voluntary bodies. Previous students have gained employment in both private and public sectors of the countryside and conservation areas outlined, and in addition some have set up as self-employed individuals.

\*This course is currently going through an exciting revalidation process to develop new pathways in line with some of our other HE courses. As a result some module content and/or the title of the programme may change. Contact us for further details.



### Key Facts

**Duration full-time:** 2 years  
(apply via UCAS)

**Duration part-time:** 4 years  
(apply to University Centre Somerset)

**Awarding body:**  
Plymouth University

**Location:** Cannington

### Entry requirements

You will require a Level 3 qualification in a relevant subject. Mature applicants with relevant experience who do not have the stated entry requirements are encouraged to apply.

Please see page 195 for our wider entry criteria.

**IN  
PARTNERSHIP  
WITH  
PLYMOUTH  
UNIVERSITY**

## Foundation Degree FOOD TECHNOLOGY AND DEVELOPMENT

### Your course

The food and drink sector directly employs up to 400,000 people nationally, and as many as 1.2 million in ancillary services. It has a particularly strong presence in the South West with many household names based here. It's a fast moving, ever changing and innovative industry to be involved in. There is currently a skills shortage and strong demand for qualified students.

The qualification has been designed in collaboration with the industry to ensure that students will develop the necessary skills and knowledge needed for employment and as the foundation for a successful career.

### Example modules:

You will study basic underpinning science and statistics as well as a number of specific vocational modules which may include:

- Food Analysis, Microbiology and Chemistry
- Primary Processing and Unit Operations
- Quality Assurance Concepts
- Food Processing and Preservation
- Food Sustainability

### Teaching & assessment

You will learn via a combination of different practical and theoretical methods including practicals, visits, seminars, case studies and in-class lectures.

Modules are generally assessed via a series of practical assignments, which account for 60% of the final mark; the end of module written examination generates the other 40%. Some modules are 100% assignment based.

### Where does it lead?

Graduates will have the opportunity to progress on to the BSc (Hons) Food Chain Management at University Centre Somerset or other relevant degree top-up courses at other universities. Alternatively, this course will provide you with the knowledge to enter one of the following careers: quality assurance, technical management, food processing and production, engineering, new product or process development, nutrition, marketing, sales, purchasing, production planning, microbiologist, lab technician or specification technologist.





### Key Facts

**Duration full-time:** 1 year  
(apply via UCAS)

**Duration part-time:** 2 years  
(apply to University Centre  
Somerset)

**Awarding body:**  
Plymouth University

**Location:** Cannington

### Entry requirements

Foundation Degree in  
Agricultural Management  
at University Centre  
Somerset or achieving  
this level in a relevant  
qualification elsewhere.

Please see page 195 for  
our wider entry criteria.

**IN  
PARTNERSHIP  
WITH  
PLYMOUTH  
UNIVERSITY**

## BSc (Hons) Top-up Degree **FOOD CHAIN MANAGEMENT**

### Your course

This programme aims to provide students with a learning environment which builds on the platform of the Foundation Degree and allows students to apply detailed knowledge and understanding of contemporary practices, issues and technologies to the management of business in the agrifood sector. Food supply industries are integrally involved in the course, providing case studies, visit opportunities and seminars on food supply management topics.

The two day full-time study structure will allow students to travel longer distances to travel with just one overnight stay. Part-time (one day) is also available. Both modes of study will enable students to continue in employment alongside study.

### Example modules:

The course is made up of modules that cover technical and managerial aspects of food supply and may include:

- Food Safety & Food Quality Management
- Food Supply Chain Management
- Strategic & Human Resource Management
- Data Synthesis & Management in the Agrifood Sector

### Teaching & assessment

It will be delivered utilising the new farm/food technology development within a research-based environment. Guest lectures and industry support will also figure strongly.

You will learn via a combination of different practical and theoretical methods which will include industry-based investigations, guided self-study and visits.

### Where does it lead?

Successful completion of the Degree will provide you with the opportunity to progress to further study in an agriculture/food related subject.

This course will prepare you well for employment in the industry in positions such as a farm manager, rural surveyor, unit manager, farm contractor, senior herdsman or working within the management team of associated food industries.





### Key Facts

**Duration full-time:** 1 year  
(apply via UCAS)

**Awarding body:** Edexcel

**Location:** Cannington

### Entry requirements

You will require a minimum of 48 UCAS points from a Level 3 qualification in a relevant subject area.

Mature applicants with relevant experience who do not have the stated entry requirements are encouraged to apply.

Please see page 195 for our wider entry criteria.

edexcel

## Higher National Certificate (HNC) HORTICULTURE

### Your course

This is a broad-based Level 4 Horticulture programme for anyone interested in developing a range of higher and technical skills to work in the horticulture industry. It is also for people already working in the industry who wish to enhance their career prospects by increasing their skill levels.

This course provides the ideal route for those studying at Level 3 to progress to Higher Education. Although this is a stand-alone qualification many will choose to continue to the full HND for a second year (Level 5), available at University Centre Somerset on completion of the HNC.

### Example modules:

Over the year you may study subjects including:

- Plant and Soil Science
- Plant Selection & Establishment
- Event Management
- Organic Principles and Practice\*  
– in association with the Soil Association
- Hard Landscaping Principles & Practice\*

### Teaching & assessment

You will be encouraged to develop your study skills, use of learning resources, essay planning and writing, and carrying out scientific research. Lectures will be both practical and theoretical, including

group work. You will be expected to devote appropriate time outside the classroom to support your coursework assessment. During the course there will be visits to industry as well as lecturers from many areas of the industry.

Assessment is via assignments, essays, reports, presentations, practical and oral tests.

The course is run over a single day per week, allowing students to continue in employment whilst studying. As with all Higher Education courses you will be expected to undertake self-study in addition to the teaching day. Teaching will take place at Cannington Campus.

### Where does it lead?

On successful completion of this course you have the opportunity to progress onto the Level 5 HND which can be studied at University Centre Somerset, or look for relevant work in the industry.

\* Available as stand-alone qualifications.





## Higher National Diploma (HND) **HORTICULTURE**

### Key Facts

**Duration full-time:** 1 year  
(apply to University Centre Somerset)

**Awarding body:** Edexcel

**Location:** Cannington

### Entry requirements

A minimum of 48 UCAS points from a full Level 3 qualification in a relevant subject area.

Mature applicants with relevant experience who do not have the stated entry requirements are encouraged to apply.

Please see page 195 for our wider entry criteria.

edexcel 

### Your course

This course is for anyone interested in continuing to develop a range of higher and technical skills to work in the horticulture industry. It is also for people already working the industry who wish to enhance their career prospects.

During the year there are modules covering a wide variety of horticultural topics and you will be required to undertake a work placement in a leading horticulture industry.

Scholarships and bursaries are available to assist in undertaking this qualification. Further details are available on request.

### Example modules:

There are seven core modules during the year which may include:

- Organic Principles and Practice – in association with the Soil Association (option)\*
- Hard Landscaping Principles and Practice (option)\*
- Management of Historic Parks & Gardens
- Horticultural Technology
- Nursery Stock Production
- Plant Health and Environmental Relationships

Some modules require individuals to undertake directed self-study with tutor support. Guest speakers from various industry-based organisations are used to give a workplace perspective.

### Teaching & assessment

The course is delivered through a range of taught lectures, tutorials and seminars, with some modules including elements of blended learning. Field trips and visits form part of the curriculum, and in some cases are linked to assignments.

The assessment for modules can be 100% coursework, including presentations, written and practical work, creation of a portfolio, or a combination of coursework and exams.

### Where does it lead?

Further study could lead to an Honours Degree in Horticulture, and employment opportunities exist through a range of horticulture industries.

Previous students have gained employment in both public and private sectors and in addition self-employment.

\* Available as stand-alone qualifications.

# PROFESSIONAL COURSES

Enhance your career options with one of our professional courses. Spanning Accounting, Teaching, Counselling and Management our industry-experienced teaching staff and facilities ensure you have the opportunity to progress.

Outside of the classroom you will have access to the fantastic facilities across the Centre, including cafés, hair and beauty salons, gym membership and so much more.

THERE ARE OVER  
**900,000**  
TEACHERS OR TEACHING  
ASSISTANTS ACROSS THE UK<sup>2</sup>

THE AVERAGE EARNINGS OF  
A CHARTERED OR CERTIFIED  
ACCOUNTANT IS MORE THAN  
**£38,000**<sup>5</sup>

A CHARTERED  
CONSTRUCTION MANAGER  
CAN EARN IN EXCESS OF  
**£70,000**<sup>4</sup>



THE AVERAGE EARNINGS  
OF A PSYCHOLOGIST  
ARE MORE THAN  
**£40,000**<sup>1</sup>

**£45,000**

AVERAGE  
EARNINGS  
OF AN  
HR MANAGER<sup>3</sup>



<sup>1</sup> EMSI data 2016

<sup>2</sup> www.gov.uk

<sup>3</sup> EMSI data 2016

<sup>4</sup> www.nationalcareersservice.direct.gov.uk

<sup>5</sup> EMSI data 2016





## GEMMA GRAY

### AAT Accounting Level 4 Diploma

*I previously completed other Accounting qualifications but on this occasion worked full-time alongside my studies. Although returning to education as an adult learner has been challenging, it has also been a positive experience as I've received exam results I am extremely proud of. On completion of my course I now hope to further progress my career within accountancy.*

#### Did you know?

Rolling Stones lead singer Mick Jagger and singer Janet Jackson both studied Accounting

#### Key Facts

**Duration part-time:** 1 year  
(apply to University Centre Somerset)

**Awarding body:** AAT

**Location:** Bridgwater

#### Entry requirements

You will need to hold the AAT Level 3 Diploma or an equivalent industry qualification to gain entry onto this course.

Please see page 195 for our wider entry criteria.

aat

## AAT Professional Diploma Level 4 ACCOUNTING

#### Your course

This course is recognised by the Association of Accounting Technicians (AAT), the professional body for accounting technicians. It is the final level in the suite of AAT courses, and is valued by leading employers. Upon completion of this level and with the required level of work experience, you can apply for Membership of the Association of Accounting Technicians, giving you the letters MAAT after your name.

#### Example modules:

On this course you will study units such as:

- Financial statements of Limited Companies
- Management Accounting: Budgeting/Decision and Controls
- Personal/Business Taxation
- A synoptic assessment to test understanding and the ability to make connections between the different topics.

#### Teaching & assessment

You will be required to attend one session every week over one academic year (35 weeks) and will be expected to spend between six and ten hours per week on additional work/home study. To obtain further tutorial help and study advice you will also be expected to visit the AAT website.

#### Where does it lead?

The special relationships AAT holds with the main sponsoring bodies will provide you with the opportunity to progress to one of their courses and study to become a Chartered, Certified, Management or Public Finance Accountant.

Completion of the Level 4 Professional Diploma, together with the required relevant experience, will allow you to practise as an Accounting Technician in an accounting practice, industry and commerce or the public sector as well as in your own right. Previous students have followed a professional career path and are now fully qualified Chartered or Certified Accountants.



# CLARE CAVILL

## Certificate in Education

*I started my studies at College then graduated with a degree in Leisure and Recreation Management at Cardiff University. From there, I worked and managed four leisure centres in and around Bristol that gave me a lot of vocational experience. During my degree, I completed work experience at the College, supporting and coaching on their Summer School programme.*

*I started working at the College as Sport Hall Manager and realised I wanted to expand my coaching role to include teaching. The Certificate in Education improved my lesson planning and classroom management, as well as the administrative processes behind the 'chalk-and-talk'. Being in a group with people teaching a variety of disciplines sparked ideas and we shared ideas and discussed different teaching approaches.*

*I completed the Certificate in Education whilst teaching part-time. This worked out perfectly because I was able to transfer my new skills immediately into the classroom and reflect on my practice. After I completed the teaching qualification, I was lucky enough to be offered a full-time teaching post and progressed into management. There's a thrill in channelling and teasing out a student's ability to develop and achieve their goals, watch them grow and bring out the best in them.*

# CERTIFICATE IN EDUCATION

(SUBJECT TO APPROVAL)

## Key Facts

**Duration part-time:** 2 years  
(apply to University Centre Somerset)

**Awarding body:**  
Plymouth University

**Location:** Taunton

## Entry requirements

Appropriate professional practice (a minimum of 100 hours of direct teaching practice plus 30 hours additional professional practice over the duration of the course). Please visit the website for further details on the entry requirements for this course.

Please see page 195 for our wider entry criteria.

## Your course

This nationally-recognised course dramatically enhances your employability as a teacher.

It leads to the award of a 'Certificate in Education' incorporating the Diploma in Education and Training at NQF Level 5.

## Where does it lead?

On successful completion, the course provides the opportunity to achieve QTLS (Qualified Teacher Learning and Skills) in the Further Education and skills sector.

## Example modules include:

The course comprises four core modules:

- Learning, Teaching and Assessment
- Theories of Learning and Managing Behaviour
- Curriculum and Society
- Wider Practice and Professional Development

## Teaching & Assessment

Teaching and learning methods include classroom-based group sessions, small group work, discussions and individual tutorials. Innovative use of technology will be used to engage and motivate learners throughout the programme.

Each module is assessed by an assignment or equivalent as well as evidencing development and observations of your teaching practice (minimum of eight observations over two years).

**IN  
PARTNERSHIP  
WITH  
PLYMOUTH  
UNIVERSITY**



### Did you know?

450 million people worldwide are affected by mental health issues.

## MAX DALDA MULLER

### Counselling Practice Level 5 Diploma

*I have been working in a rehabilitation centre for drug and alcohol problems since 2010. In 2012 I began a teaching role at the College, as part of the Counselling programme and also teach mental health awareness. In 2013 I started my own private counselling practice. I feel really privileged to have the opportunity to support people at a pivotal time in their lives and it fills me with a great sense of pride to know that I have helped people to turn their lives around.*

### Key Facts

**Duration part-time:** 2 years  
(apply to University Centre Somerset)

**Awarding body:** AIM Award

**Location:** Taunton

### Entry requirements

#### Level 4

You will need to have completed a Level 3 programme in Counselling Skills & Theory, and demonstrate experience of using those skills in a 1:1 capacity.

#### Level 5

It is recommended that learners have achieved the Level 4 Diploma or equivalent before embarking on the Level 5 Diploma.

Please see page 195 for our wider entry criteria.



## Level 4/5 Diploma COUNSELLING PRACTICE

### Your course

This course is aimed at those who have already completed Level 3 counselling skills and who wish to take their studies to a professional level. The AIM Awards Level 4/5 Diploma in Counselling (QCF) enables learners to work towards the production of a research proposal. Learners will be expected to demonstrate a critical appreciation of theoretical concepts, legal and ethical issues in all their written work. At Level 5, learners should be practitioners who have sufficient experience to evaluate how useful theoretical concepts are proving to be in their own client work.

The AIM Awards Level 4 and Level 5 Diploma in Counselling Practice (QCF) are accredited by the National Counselling Society and are for those wishing to achieve professional status in counselling.

### Example modules:

In the Diploma you will learn about a range of subjects that may include:

- Defining Ethics and Boundaries
- The Complexities of the Therapeutic Relationship
- Developing Supervision Skills
- Understanding the Effectiveness of Supervision

### Teaching & assessment

A variety of methods are used including experiential exercises, case studies, didactic teaching and discussion to accommodate students' different learning styles. A personal development group is an integral part of the Diploma and is more akin to the reality of the counselling process than any other part of the programme. Supervision groups are used in the second year to develop counselling skills and reflective practice.

You will be assessed through your understanding of aspects of counselling theory, deeper level skills practice and work within a personal development group, plus an examination paper. You will be observed and write assignments, as well as engage in regular supervised counselling practice.

### Where does it lead?

You have the opportunity to continue your studies at a university of your choice. You can choose either a postgraduate Certificate/ Diploma.

Students graduating from this course can seek employment as counsellors in schools, rehabilitation centres, the NHS or charitable organisations. Some enter related fields such as coaching and mentoring.



### Key Facts

**Duration part-time:** 1 year  
(apply to University Centre Somerset)

**Awarding body:** Chartered  
Institute of Personnel and  
Development (CIPD)

**Location:** Taunton

### Entry requirements

You will need a Degree level qualification, or the Level 3 Certificate in Human Resource Practice (or CPP). Mature students without the stated entry requirements but with relevant experience are encouraged to apply.

Please see page 195 for our wider entry criteria.

## Level 5 Intermediate Certificate **HUMAN RESOURCE MANAGEMENT**

### Your course

This qualification will help you develop your ability to evaluate the effectiveness of different HR models and practices, while increasing your understanding of the external factors that impact upon HR activities and organisations.

### Example modules:

You will build on your expertise and develop your planning, analytical and problem-solving skills, studying subjects such as:

- Developing Professional Practice
- Using Information in Human Resources
- Employment Law
- Employee Relations
- Managing and Coordinating the HR Function

### Teaching & assessment

The Intermediate Certificate is assessed through a combination of practical and written assignments.

The majority of modules are taught via lectures; other teaching methods include seminars, tutorials, workshops and guided learning/independent activities.

### Where does it lead?

This qualification gives you a professionally recognised Human Resources qualification and the knowledge element required towards CIPD Associate membership. It also serves as an entry qualification for the CIPD Level 7 Advanced Diploma in Human Resources Management at an institution of your choice, subject to meeting the institution's entry criteria.

On completion of this course we have found a high proportion of our students secure employment in the industry or progress within their current career.







## NATALIE FURSLAND

### Level 5 in Management and Leadership

*Investigating how communication is most effective in an organisation has helped me with training new members of staff and identifying how an individual's strengths and weaknesses are best used within a team. I have found this course extremely rewarding and learnt a great deal about how I would conduct myself when/if I undertake a management role.*

## CMI Level 5 (RQF) Award / Certificate / Diploma **MANAGEMENT AND LEADERSHIP**

### Key Facts

**Duration part-time:** One afternoon and evening for up to 6 weeks (Award), 12 weeks (Certificate) and 32 weeks (Diploma)

**Awarding body:** The Chartered Management Institute (CMI)

**Location:** Taunton

### Entry requirements

To be employed in a junior/middle management position (one year minimum), have a CMI Certificate in First Line Management or an NVQ Level 4 in Management. Mature students without the stated entry requirements but with appropriate experience, are encouraged to apply.

Please see page 195 for our wider entry criteria.

### Your course

This management course is an important qualification if you aspire to hold a position in management, and want to build a portfolio of transferable skills. It is a practical programme designed to develop the management and leadership skills necessary for today's business environment. The qualification recognises current achievements as preparation for future development. The course offers a flexible study programme allowing you to choose to study the formal timetable or elect to study units of your choice, helping you to gradually build a recognised qualification.

### Example modules:

You can study a Level 5 Award in any one of the modules listed below.

For the Level 5 Certificate you will study the following modules:

- Being a leader
- Leadership in practice

For the Level 5 Diploma you will study the following modules:

- Being a leader
- Leadership in practice
- Managing team and individual performance
- Meeting stakeholder and quality needs
- Conducting a management project

### Teaching & assessment

The majority of modules are taught via lectures; other teaching methods include seminars, tutorials, workshops and guided learning/independent activities.

You will be assessed by written coursework, submitted electronically.

### Where does it lead?

The natural academic progression route on completion of this course is to study the Level 7 in Strategic Management and Leadership (RQF) at an institution of your choice, subject to meeting the institution's entry criteria. A Diploma in Management and Leadership is the benchmark qualification for full CMI membership, taking you another step towards Chartered Manager status.

This is an internationally recognised qualification that will help you to develop your career in middle to senior management. Many of our students have been recognised for promotion with their current employers, while others have sought a more responsible role with other employers.





### Key Facts

**Duration part-time:** 2.5 years

**Awarding body:** The Chartered Management Institute (CMI)

**Location:** Taunton

### Entry requirements

The entry requirement for this apprenticeship will be decided by each employer, but may typically be five GCSEs at Grade C or higher.

Please see page 195 for our wider entry criteria.



## Apprenticeship with CMI Level 5 Diploma **MANAGEMENT AND LEADERSHIP**

### Your course

As an operations/departmental manager you will be someone who manages teams and/or projects, and achieves operational or departmental goals and objectives, as part of the delivery of your organisation's strategy. You are accountable to a more senior manager or business owner. Your specific responsibilities and job title may vary, but the knowledge, skills and behaviours needed will be the same. Your key responsibilities may include creating and delivering operational plans, managing projects, leading and managing teams, managing change, financial and resource management, talent management, coaching and mentoring.

### Example modules:

As part of this apprenticeship standard you will study a CMI Level 5 Diploma in Management and Leadership which will cover the majority of the knowledge and skills elements required. This may include the following units:

- Personal development as a manager and leader
- Information-based decision making
- Managing team and individual performance
- Organisational financial management

- Project development and control
- Managing recruitment, selection and induction.

### Teaching & assessment

On-programme assessment will include:

- Regular assessment (involving your employer and University Centre Somerset)
- Development of a portfolio demonstrating learning and development activities within the workplace
- Evidence of 360-degree feedback within the ongoing development portfolio

At the point of 'gateway readiness' you will be prepared for End Point Assessment which will include:

- Test of knowledge using scenarios
- Competency-based interview
- Assessment of portfolio evidence
- Presentation of work based project approach and findings with Q&A

### Where does it lead?

On completion, apprentices can register as full members with the Chartered Management Institute and/or the Institute of Leadership & Management, and those with three years' management experience can apply for Chartered Manager status through the CMI.



### Did you know?

In 2014, there were 1.3 million teaching and educational professionals in England – earning an average annual salary of £42,251



## LUCY WITHECOMBE

### PGCE

*I studied Art & Design at a college in Plymouth then completed a degree in Fashion & Textiles. After graduating, I became a Technical Demonstrator at the Bridgwater & Taunton College and that role has developed to include ten hours teaching a week. I really enjoy that aspect of my role and as a result, wanted to improve my knowledge and skills, so I enrolled on the PGCE.*

*The course has helped me make my lessons more exciting and interactive by learning practical skills, as well as providing me with the theory of teaching and how best to cater to every learning style. I have a fantastic mentor whom I meet each week and we observe each other in the classroom or studio. I believe my students are reaping the benefits of me improving my practice – I'm more confident and have the skills I need to fully engage them during lessons.*

*I feel very well supported by my PGCE tutors and others within my group. They're also flexible and understanding regarding the demands on my timetable and meeting my teaching hour obligations.*

## PGCE

(SUBJECT TO APPROVAL)

### Key Facts

**Duration part-time:** 2 years  
(apply to University Centre Somerset)

**Awarding body:**  
Plymouth University

**Location:** Taunton

### Entry requirements

Appropriate professional practice (a minimum of 100 hours of direct teaching practice plus 30 hours additional professional practice over the duration of the course). Please visit the website for further details on the entry requirements for this course.

Please see page 195 for our wider entry criteria.

### Your course

Incorporating the Diploma in Education and Training, this nationally-recognised course dramatically enhances your employability as a teacher. It leads to the award of a Postgraduate Certificate in Education, at NQF Level 7 or Professional Graduate Certificate in Education at NQF Level 6.

On successful completion, the course provides the opportunity to achieve QTLS (Qualified Teacher Learning and Skills) in the Further Education and skills sector.

### Example modules:

The course comprises four core modules:

- Learning, Teaching and Assessment
- Theories of Learning and Managing Behaviour
- Curriculum and Society
- Wider Practice and Professional Development

### Teaching & assessment

Teaching and learning methods used include classroom-based group sessions, small group work, discussions and individual tutorials. Innovative use of technology will be used to engage and motivate learners throughout the programme.

You will be assessed via teaching and learning observations; written reports; reflective journal entries; peer assessed seminars and presentations; development of specialist subject resources and a professional teaching portfolio.

### Where does it lead?

This Certificate can lead to positions involving teaching within the Further Education and skills sector.

**IN  
PARTNERSHIP  
WITH  
PLYMOUTH  
UNIVERSITY**



### Did you know?

37% of teachers were inspired into teaching by former teachers.

## Level 4 Certificate EDUCATION AND TRAINING

### Key Facts

**Duration part-time:** One morning or evening a week for the academic year (approx. 30 weeks)  
(apply to University Centre Somerset)

**Awarding body:** Edexcel

**Location:** Bridgwater & Cannington

### Entry requirements

- Access to appropriate professional practice in the education or training sector for a minimum of 30hrs over the academic year (e.g. 1 hour a week of teaching or training for 30 weeks)
- Access to regular mentor support in your specialist area is desirable
- A minimum of a level 3 qualification in your specialist area – relevant professional, industrial or commercial experience will be considered if formal qualifications are not available or relevant

Please see page 195 for our wider entry criteria.

edexcel

### Your course

On successful completion of the BSc (Hons) top-up degree in Countryside Management at University Centre Somerset, you have the option of entering employment, further academic study for a Masters Degree or PhD, and combination thereof.

This course could help you gain employment within a variety of countryside and conservation bodies, wildlife organisations, education roles and voluntary bodies. Previous students have gained employment in both private and public sectors of the countryside and conservation areas outlined, and in addition some have set up as self-employed individuals.

### Example modules:

- Understanding Roles, Responsibilities and Relationships
- Planning to meet the needs of learners
- Delivering education and training
- Assessing learners
- Using resources
- Teaching in a specialist area

### Teaching & assessment

The course will be delivered via classroom based sessions that will combine a variety of student and tutor led activities - for example small and large group discussions, student led seminars, 1:1 tutorials, peer assessed micro-teaches,

individual and small group research tasks and student led presentations. The innovative use of technology will be promoted and used to provide an engaging, interactive and inclusive learning environment. Supportive course materials will be made available via our Online Learning Platform (Blackboard) and fully equipped Learning Resource Centre.

You will be assessed via teaching and learning observations; written reports; reflective journal entries; peer assessed seminars and presentations; development of specialist subject resources and a professional teaching portfolio.

### Where does it lead?

Students who complete the Level 4 Certificate may be eligible to progress onto the L5 Diploma in Education and Training (DET).

Career progression in a teaching or training role within your current organisation or business and access to full-time or part-time teaching, lecturing or training positions in the Further Education and Skills sector.





# JAKE ELSON

## Education and Training Level 5 Diploma

As a Learning Support Co-ordinator, I possess a good level of technical skills and support lecturers when they are teaching. I have decided that I would like to teach and therefore need to develop and understand teaching methods. The staff provide continual constructive feedback, helping me achieve higher grades. In particular I have found one-on-one sessions and mentoring very useful. The advice I have received is invaluable in preparation for my next steps.

# Level 5 Diploma EDUCATION AND TRAINING

## Key Facts

**Duration part-time:** One morning or evening a week (3hrs + 1hr tutorial) for the academic year (approx. 30 weeks)

**Awarding body:** Edexcel

**Location:** Bridgwater

## Entry requirements

- Access to appropriate professional practice in the education or training sector for a minimum of 100hrs over the academic year (e.g. 3.5 hours a week of teaching or training for 30 weeks)
- Access to regular mentor support in your specialist area is desirable
- A minimum of a level 3 qualification in your specialist area – relevant professional, industrial or commercial experience will be considered if formal qualifications are not available or relevant

Please see page 195 for our wider entry criteria.

## Your course

During this course you will study a number of units that explore the theoretical framework that underpins your role and responsibilities in becoming an outstanding practitioner. We will help you recognise the key challenges of the sector, lead the planning of your own improvement as a reflective practitioner, and develop a professional approach to your role in ways that will engage and inspire your learners or trainees.

## Example modules:

- Developing Teaching, Learning and Assessment
- Teaching, Learning and Assessment
- Theories, Principles and Models in Education and Training
- Wider Professional Practice and Development in Education and Training
- Action Research
- Developing, Using and Organising Resources
- Teaching in a specialist area

## Teaching & assessment

The course will be delivered via classroom based sessions that will combine a variety of student and tutor led activities - for example small and large group discussions, student led seminars, 1:1 tutorials,

peer assessed micro-teaches, individual and small group research tasks and student led presentations. The innovative use of technology will be promoted and used to provide an engaging, interactive and inclusive learning environment. Supportive course materials will be made available via our Online Learning Platform (Blackboard) and fully equipped Learning Resource Centre.

You will be assessed via teaching and learning observations; written reports; reflective journal entries; peer assessed seminars and presentations; action research project; development of specialist subject resources and a professional teaching portfolio.

## Where does it lead?

Career progression in a teaching or training role within your current organisation or business and access to full time or Part-time teaching, lecturing or training positions in the Further Education and Skills sector.



# University Centre Somerset

## ACCESS TO HIGHER EDUCATION DIPLOMA

### Key Facts

**Duration:** 4 days a week for 30 weeks

**Awarding body:** Ascentis

**Location:** Bridgwater / Taunton

### Entry requirements

Self-motivation and a willingness to learn! There are no formal qualifications required for entry but you will undergo an initial assessment to ensure you are on the right course for your skill level. You are required to be aged 19 or over and will be eligible for a loan to cover your course fees.



### Your course

An Access to Higher Education qualification can be the route to a wide range of career and Higher Education opportunities. You may progress directly to university or college, specialising in your chosen subject.

We offer eight different routes for the Access to Higher Education qualification enabling you to progress onto a number of Higher Education courses. Your chosen career route will dictate which course you undertake; all courses have particular progression routes linked to them.

#### Courses include:

- Education
- Forensic Science
- Health and Social Care
- Humanities
- Science
- Science and Engineering
- Social Science
- Art & Design – only available in Taunton)

### Example modules:

In addition, Access students may study core subjects of:

- Study Skills
- Information Technology
- English
- Maths
- Tutorial

These subjects will also support your learning. There is an end of year examination in some subjects, and you will also produce a portfolio of work over the year, from which you will accumulate credits towards the Diploma.

### Teaching & Assessment

The majority of modules are taught via lectures; other teaching methods include seminars, tutorials, workshops and guided learning/independent activities.

### Where does it lead?

Successful completion of this course will provide you with a qualification that will allow you to apply to study a university level course here at University Centre Somerset or at a university of your choice. In recent years students have gone on to study a wide range of subjects including Environmental Biology at the University of the West of England, Nursing at Plymouth University and Animal Behaviour at Liverpool University.





## University Centre Somerset

# HOW TO APPLY

We very much hope that you will apply to study for your vocational degree at University Centre Somerset. We provide the education you need to succeed in life, and secure the career of your dreams. Here's how to proceed with your application.

### Full-time study

If you intend to study full time for your degree, you must apply for your place at University Centre Somerset through UCAS, using the website [www.ucas.com](http://www.ucas.com).

If you are at school or college, your tutors will be able to support you through this process. If you are not at school or college, you can register online, and we will be pleased to advise you at any stage of your application.

For entry in September 2018, you need to apply by January 2018. We advise that you get your application in early, so as to avoid last-minute panics. You can submit your application any time from May 2017.

If you are applying to more than one institution, you will be charged a fee by UCAS. If University Centre Somerset is your only choice, the fee is reduced.

To find relevant course and institution codes for our programmes, please refer to [www.somerset.ac.uk](http://www.somerset.ac.uk) or [www.ucas.com](http://www.ucas.com).

### Part-time study

If you would like to study on a part-time basis, please apply directly to University Centre Somerset, via our website, [www.somerset.ac.uk](http://www.somerset.ac.uk).

For help with this process, please contact us on 01823 366366 or email [info@somerset.ac.uk](mailto:info@somerset.ac.uk).

### Portfolios, evidence and DBS clearance

Please note that entry to some of our programmes is subject to a satisfactory Disclosure and Barring Service (DBS) check.

For Art and Design courses, we assess students by means of a portfolio, which should be submitted at interview. Other programmes conduct interviews to confirm a candidate's suitability, and some require

evidence of relevant prior learning.

Whether or not you need to come to interview, we strongly encourage you to visit University Centre Somerset. This will give you a flavour of life at our centres, and help you picture yourself here as an undergraduate.

### Entry Requirements:

Most of our courses will generally have the following entry requirements; however please check the course information page for any additional or different criteria.

Applicants require a qualification in a relevant subject with a minimum of 80 UCAS points at AS/A2 Level (minimum 32 points at A2 level).

**OR** relevant BTEC Qualifications (QCF) MMP (Extended), DM (Diploma), D\*D (90 Credit Diploma)

**OR** an Access to HE course in a relevant subject area

**OR** an equivalent qualification – this will be determined by college staff at time of application

Our students are also required to have five GCSEs, which include English Language and Mathematics to a minimum of Grade C (except some art courses – please contact us for more information). Applicants with English as their second language must have a minimum IELTS Level 6 or equivalent.

Applicants will be invited to interview, where they will need to display the relevant skills for the course they are applying for. For art-based subjects, they are expected to bring a portfolio displaying at least ten pieces of original work along with evidence of drawing ability and creativity. Please check individual course pages for information about additional interview requirements.

Mature students who do not meet these formal entry requirements are welcome to apply if they can evidence their interest, relevant experience and knowledge in the field of study. A formal interview will be required.

## University Centre Somerset

# FEES AND FINANCE

University Centre Somerset prides itself of offering top-quality Higher Education at a lower cost than other universities, without diminishing quality.

Because your qualification is awarded from one of our top-rated validation partners – The Open University, Plymouth University, Oxford Brookes University or UWE Bristol – we offer the chance to earn a prestigious degree while enjoying the many benefits of studying at our campuses. These include our industry-standard facilities, lower living costs than larger towns and cities, and the opportunity to learn in smaller groups, with employability built into every phase of your programme.

### Funding your future

While it can seem a big step to take on a student loan, the system is set up to the advantage of students. That explains why the number of undergraduates enrolling at UK universities has risen since the introduction of the current fee structure: it is now easier than ever to study for a degree, without taking on any up-front costs.

Student loans are available to every student to cover tuition fees and living costs.

### Repayment

The most important thing to say is that you won't have to repay your student loan until you earn at least £21,000 per year. If your earnings subsequently drop below that level, your loan repayments stop. If you have not cleared the balance after 30 years, it is written off. And even when you do start repaying it, it is only at a rate of 9% of your income over and above £21,000. For example, if you earn £25,000 per year, you'll pay 9% of £4,000 each year, equating to just £30 per month. All repayments are deducted at source from your pay.

If you have any queries about student finances and fees, please contact our help desk on 01823 366366 or by emailing [info@somerset.ac.uk](mailto:info@somerset.ac.uk).



# University Centre Somerset

## WHERE TO FIND US

One of the benefits of University Centre Somerset is our accessibility. So however you're travelling, you will find us easy to locate.

### Rail

Our Bridgwater and Taunton Campuses are easily accessible by bus or rail. Both towns are on the main line from Bristol to Exeter, and our campuses are within an easy walk or taxi ride of the station.

### Bus

We have bus stops on each of our campuses, with a regular connection running between Bridgwater and Cannington. Detailed timetables are available on [www.bridgwater.ac.uk](http://www.bridgwater.ac.uk).

### Car

All three campuses offer limited parking, including designated areas for disabled parking, mopeds and bicycles. You will be charged £1 per day to park at our Taunton Campus, while parking is free at Bridgwater and Cannington. Taunton also operates two efficient park and ride services, both of which drop off outside our main entrance. Fares are approximately 90p return.



### Taunton Campus

Wellington Road  
Taunton  
Somerset TA1 5AX  
01823 366366

### Bridgwater Campus

Bath Road  
Bridgwater  
Somerset TA6 4PZ  
01278 441234

### Cannington Campus

Rodway  
Cannington  
Somerset TA5 2LS  
01278 655105





## Sport Academy

# BRITISH UNIVERSITY & COLLEGES SPORTS (BUCS)

In the 2018/19 academic year, University Centre Somerset will be represented in both rugby and football in the British University & Colleges Sports (BUCS) League. Visit the website for more details on how to participate.



# University Centre Somerset

## INDEX

### A

Access to Higher Education Diploma	193
Accommodation	29
Cannington	29
Costs	29
Taunton	29
Accounting	
AAT Professional Diploma Level 4	176
Advice and pastoral care	5
Agricultural Management	
BSc (Hons) Top-up Degree	152
Foundation Degree	150
Animal Conservation	
BSc (Hons) Top-up Degree	156
Foundation Degree	154
Animal Management Centre	27
Applied Animal Management	
BSc (Hons) Top-up Degree	160
Foundation Degree	158
Applying	195
Art & Design	70
Foundation Diploma	70
Arts House	27

### B

Bridgwater	32
Bridgwater Campus	21
Business	36
Business Management	
BA (Hons)	38
BA (Hons) Top-up Degree	42
Foundation Degree	40

### C

Cafes	25
Cannington	32
Cannington Campus	21
Certificate in Education	178
Childcare centres	23
Computing	36
Computer Games Technology	
BSc (Hons)	44
BSc (Hons) Top-up Degree	48
Foundation Degree	46
Computing & Internet Technologies	
BSc (Hons)	50
BSc (Hons) Top-up Degree	54
Foundation Degree	52
Construction	98
Chartered Membership Programme (CMP)	100
Construction Site Management (Construction)	110

Construction & The Built Environment	
Higher National Certificate (HNC)	106
Higher National Diploma (HND)	108
Construction & The Built Environment (Civil Engineering)	
Higher National Certificate (HNC)	102
Higher National Diploma (HND)	104
Contents	2
Counselling Practice	
Level 4/5 Diploma	180
Countryside Management	
BSc (Hons) Top-up Degree	164
Foundation Degree	162
Creative Arts	56

### D

Dance	
Dance Teaching and Learning Level 6 Diploma	86
Performance Arts Level 4	90
Performance Contemporary Dance Level 4	88

### E

Early Childhood Studies	
BA (Hons)	132
BA (Hons) Top-up Degree	136
Foundation Degree	134
Education and Training	
Level 4 Certificate	190
Level 5 Diploma	192
Energy Skills Centre	25
Engineering and Motorsport	112
Electrical/Electronic and Control Engineering	
Higher National Certificate (HNC)	114
Mechanical Engineering	
Foundation Degree	120
Higher National Certificate (HNC)	118
Mechatronics	
Foundation Degree	122
Production Engineering	
Higher National Certificate (HNC)	116
Equality and diversity	6
Equestrian Centre	23

### F

Facilities	23
Animal Management Centre	27
Cafes	25
Childcare centres	23
Equestrian Centre	23
Health and Social Care Centre	25
Learning Resource Centres (LRCs)	23
Rodway Farm	23
Sports facilities	27

The Arts House	27
The Energy Skills Centre	25
The McMillan Theatre	27
Fashion Design	
BA (Hons)	58
BA (Hons) Top-up Degree	62
Foundation Degree	60
Fees	196
Finance	196
Fine Art	
BA (Hons)	64
BA (Hons) Top-up Degree	68
Foundation Degree	66
Food Chain Management	
BSc (Hons) Top-up Degree	168
Food Technology and Development	
Foundation Degree	166

### G

Graphic Media & Communication	
BA (Hons)	72
BA (Hons) Top-up Degree	76
Foundation Degree	74

### H

Health and Social Care Centre	27
Health & Social Care	
BA (Hons)	138
Foundation Degree	140
Health & Social Care Management	
BSc (Hons) Top-up Degree	142
Health, Social Studies and Sport	130
Higher Education Course Levels	33
Horticulture	
Higher National Certificate (HNC)	170
Higher National Diploma (HND)	172
Human Resource Management	
Level 5 Intermediate Certificate	182

### I

IT facilities	23
---------------	----

### L

Land-based studies	148
Learning Resource Centres (LRCs)	23

### M

Management and Leadership	
Apprenticeship with CMI Level 5 Diploma	186
CMI Level 5 Award / Certificate / Diploma	184
McMillan Theatre	27
Media Make-up	
BA (Hons) Top-up Degree	80
Foundation Degree	78
Media Production	
Foundation Degree	82

Motorsport	
Motorsport Engineering	
Foundation Degree	124
Motorsport Technology	
BSc (Hons) Top-up Degree	126
Music Production	
Foundation Degree	84

### N

Nuclear	112
Nuclear Engineering	128

### O

Open University	11
Oxford Brookes University	15

### P

Personal tutors	5
PGCE	188
Plymouth University	13
Professional Courses	174
Public Services and Criminology	
Foundation Degree	144

### R

Rodway Farm	23
-------------	----

### S

Sport	130
British University & Colleges Sports (BUCS)	199
Sports facilities	27
Sports Science with Sports Coaching Education	
Foundation Degree	146
Students' Union	5

### T

Taunton	32
Taunton Campus	21
Textiles & Surface Design	
BA (Hons)	92
BA (Hons) Top-up Degree	96
Foundation Degree	94

### U

University Centre Somerset	3
University of the West of England (UWE)	17
University partners	
National College for Nuclear	19
Oxford Brookes University	15
Plymouth University	13
The Open University	11
University of the West of England	17

### W

Walled Gardens of Cannington	25
Welcome	1
What students do next	7
Where to find us	197



---

# BE AT THE CENTRE OF THINGS

---

## HE OPEN DAY

**30 September 2017, 10am – 2pm**

We have other open events throughout the academic year.

Come and visit to see what makes University Centre Somerset the perfect place to start your journey.

Make your Open Day reservation at **[someset.ac.uk/openday](http://someset.ac.uk/openday)**

**University Centre Somerset**

**Part of Bridgwater & Taunton College**

**Wellington Road, Taunton, Somerset TA1 5AX**

**01823 366366 | [info@someset.ac.uk](mailto:info@someset.ac.uk) | [www.someset.ac.uk](http://www.someset.ac.uk)**

