

ArcWorld® C-50 Series

with DX200 Controller

ARCWORLD C-50 | ARCWORLD C-52 | ARCWORLD C-50S | ARCWORLD C-52S

KEY BENEFITS

Compact workcell suited to high production

Mounted on a common base for quick installation and relocation

High productivity without increased footprint or integration complexity

SPECIFICATIONS

Max Part Size (mm)

AWC-50: 1,650 x 685

AWC-52: 775 x 685 each

Max Tooling Diameter (mm)

AWC-50S: 1,300 x 700

AWC-52S: 550 x 700 each

ROBOTS



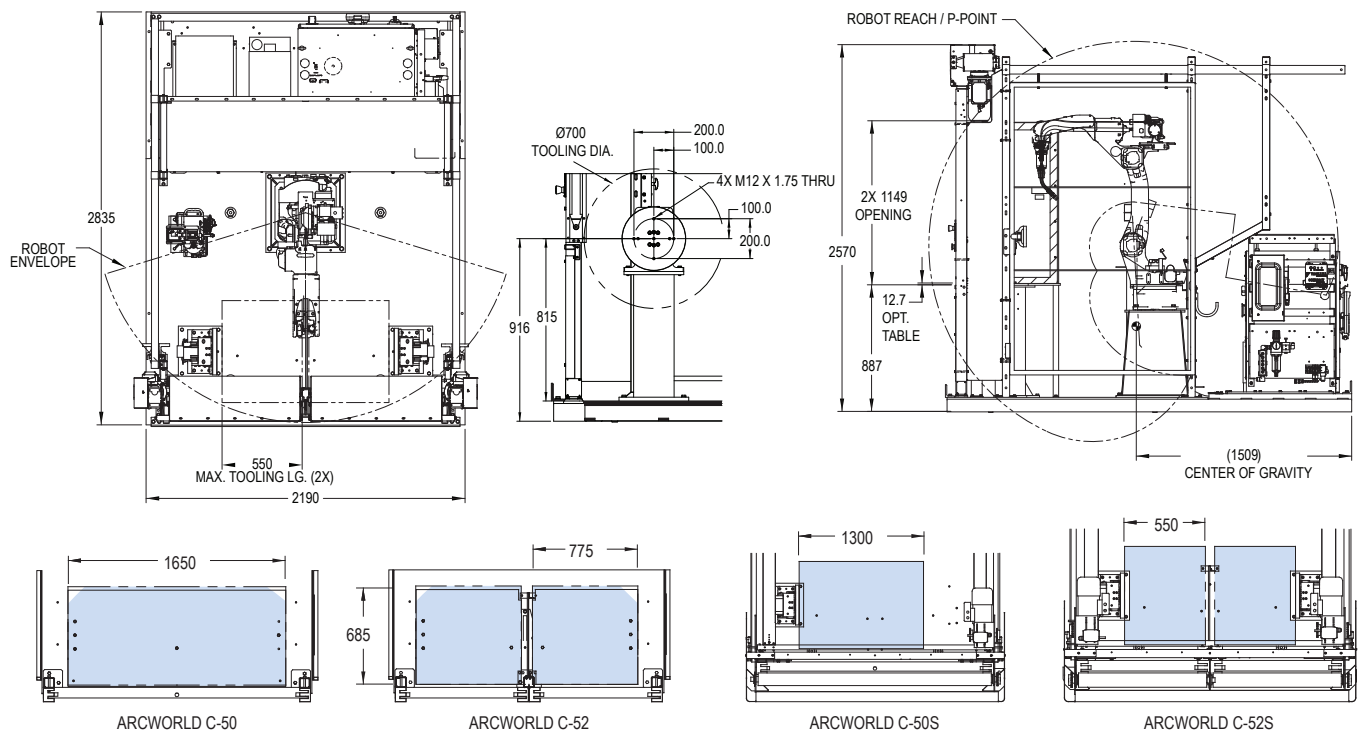
MA1440



VA1400 II

- Designed specifically for high-mix production of small- to medium-sized parts
- Workcell is shipped pre-assembled on a common base.
- Power supplies and controller are on a sub-base which can be pulled out for servicing access.
- Twist-lock connectors are included on all interconnection cables.
- World's fastest MA1440 arc welding robots can reduce cycle time by 15 percent, greatly enhancing productivity.
- MA-series robots are backed by the industry's only two-year torch cable warranty.
- Unique 7-axis VA1400 II robot provides additional application flexibility in the dual station workcells. The added "elbow" axis allows it to easily bend around the center partition.
- The AWC-50 models include a single welding station with fixed tooling (AWC-50) or a servo-driven MH185 headstock (AWC-50S)
- Dual-station models are available with fixed tooling (AWC-52) or with two MH185 headstocks (AWC-52S).
- Due to high payload capacity of headstock, a tailstock is not needed.
- Tooling risers are provided for the fixed-station workcells. Dowel pins can be used for changeover between multiple parts/fixtures.
- Single large tabletop (AWC-50) or two smaller tabletops (AWC-52) are available as options.
- Dual station eliminates sweep time of part positioner.
- Powered roll-up door(s) improve operator ergonomics.
- Robot operation is interlocked with roll-up doors to safeguard the operator during part load/unload.

ARCWORLD C-50 SERIES



All dimensions are metric (mm) and for reference only.
Request detailed drawings for all design/engineering requirements.

SPECIFICATIONS

Robot

MA1440: 6 kg payload; 1,440 mm reach
VA1400 II (optional): 3 kg payload; 1,434 mm reach

DX200 Controller

Programming pendant with single point of control
Large color touch screen
USB and CF card memory storage
Standard workcell software functions
Multi-tasking (up to 7 jobs at once)
Coordinated motion
Twin synchronous
Mirror copy
Ladder logic editing/display
Collision detection
Software weaving
Ethernet port
Fieldbus I/O options

ArcWorld Welding Package

HyperStart™
Weld-in-Teach mode function
Graphic arc files
Digital weld interface
Integrated torch package
Arm-mounted 4-roll wire feeder
Welding power source
Two-year torch cable warranty

Workcell Features

Common cell base and programming platform
Pneumatic F/R with manifold

Operator Control

E-Stop
Single push button cycle index
(latching relay interlocked for safety)
Door up/down interlocked with cycle start

Fixture Mounts (AWC-50 and AWC-52)

Risers provide both locating pins and threaded holes
Center post supports single fixture completely (AWC-50)
or one side of the two smaller fixtures (AWC-52) per side

MH185 Headstock (AWC-50S and AWC-52S)

185 kg payload @ 152 mm off-center, 250 mm (7.9") overhang
Rated speed: 12.4 rpm
Rated weld current: 400A
Coordinated motion software

Total Safety Environment

(in compliance with ANSI/RIA R15.06-2012 and Canadian safety standards)
Safety-rated, tamper-resistant interlocks
Single point of operator control
Barrier guarding with protective arc curtains
Cycle start button interlocked w/safeguards
L-shaped, dual-channel light curtains
Dual sliding interlocked doors on each side of cell
Functional Safety Unit (FSU) to monitor station axis on operator side
Safety PLC

OPTIONS

Binzel or Tregaskiss torches and reamers
Variety of weld packages; Miller, Fronius, Lincoln
Wide variety of fieldbus cards and HMIs
Vision systems
Seam tracking and seam finding packages
Tip changing service window
ToolSight® TCP gauge
Kinetic Teaching™

Yaskawa America, Inc.
Motoman Robotics Division

100 Automation Way
Miamisburg, OH 45342
Tel: 937.847.6200
Fax: 937.847.6277

motoman.com

YASKAWA