

MOTOSIGHT™ 2D

Global Edition | Powered by Cognex

EASILY ADDS 2D VISION FUNCTIONALITY TO YOUR APPLICATION

IP67 WASHDOWN
READY

SCREEN ON
PENDANT

NO PC
REQUIRED

HIGH SPEED

CAMERA ON
ROBOT

OR

STATIONARY
MOUNTED CAMERA

KEY BENEFITS

Easy-to-integrate vision solution

Adds flexibility to robot applications

Reduces cost of expensive tooling for locating parts

CONTROLLERS



DX200



DX100



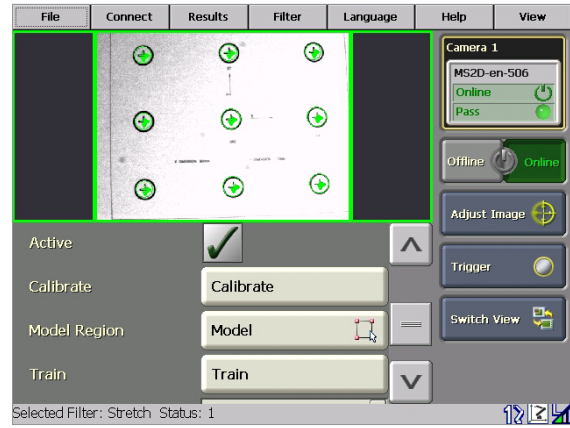
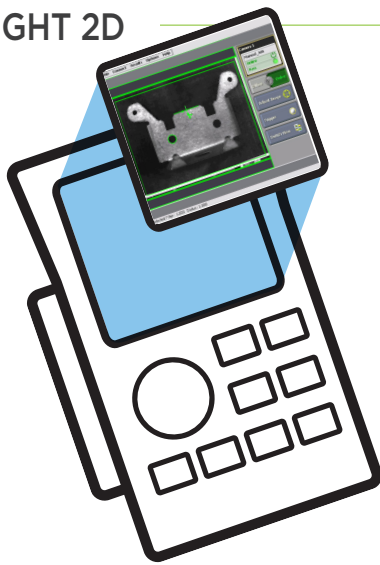
FS100

- Easy-to-integrate, comprehensive vision solution features IP67-rated Yaskawa MS-series camera and robot controller software.
- EasyBuilder® vision tools and powerful robot macros allow quick and easy programming of complex vision applications.
- Reduces cost of expensive tooling for locating parts.
- Easy-to-use pendant:
 - Displays live camera image
 - Train vision models (“region of interest” and “find region”)
 - Camera calibration
 - Display/Edit EasyView® tagged vision data allows customization of vision tools and results displayed on pendant
 - Assign vision data results to robot variables quickly and easily
- Camera is controlled through built-in Ethernet communications port.
- Variety of camera options including:
 - Yaskawa MS100, MS200, MS300
 - Available with 12.5-, 16- or 25-mm lens
- Compatible with In-Sight Explorer 4.8.5, 4.9.3
- Supports eight languages:
 - English
 - Chinese
 - French
 - German
 - Italian
 - Japanese
 - Korean
 - Spanish

CAMERA MODEL	RESOLUTION	PROCESSOR SPEED	FRAMES PER SECOND	PATMAX® *
MS100	800 x 600	1x	102	n/a
MS200	800 x 600	3x	102	✓
MS300	1280 x 1024	6x	60	✓

* Advanced pattern finding algorithm

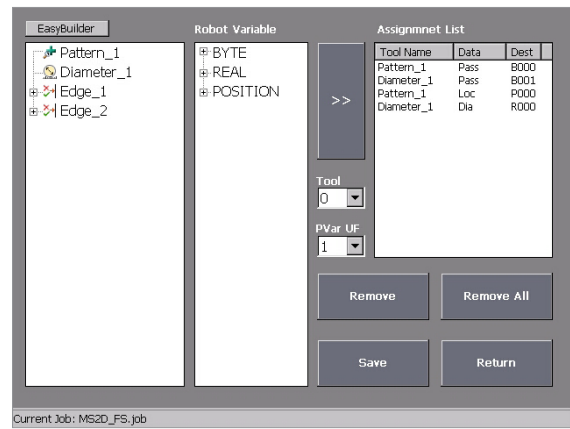
MOTOSIGHT 2D



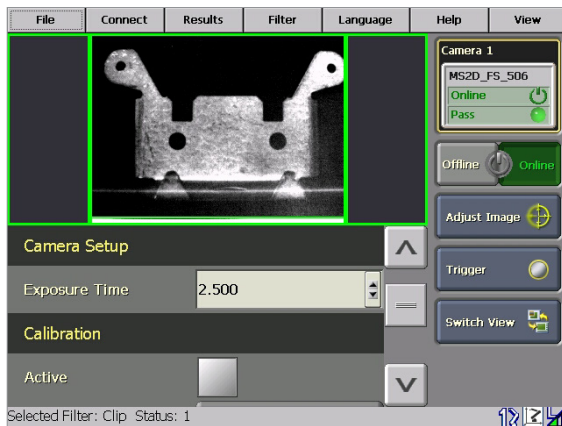
CALIBRATION



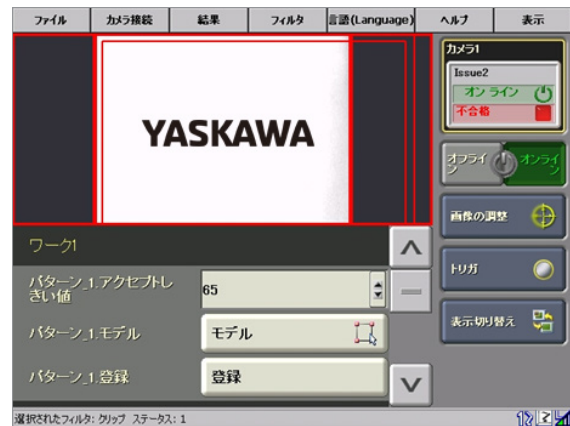
FEATURE SELECT



ASSIGNMENT



EASYVIEW TAG DISPLAY



MULTILINGUAL



motoman.com

Yaskawa America, Inc. | Motoman Robotics Division
 100 Automation Way | Miamisburg, OH 45342
 Tel: 937.847.6200 | Fax: 937.847.6277