



MA1440

ARC WELDING

KEY BENEFITS

NEW! Large 50 mm thru-hole for process utilities

NEW! 6 kg payload for welding applications; 12 kg payload for handling applications

NEW! Contoured arm design improves torch access

Proven torch cable reliability; backed by industry's first two-year torch cable warranty

SPECIFICATIONS

6 kg payload

1,440 mm horizontal reach

2,511 mm vertical reach

±0.08 mm repeatability

CONTROLLERS



DX200



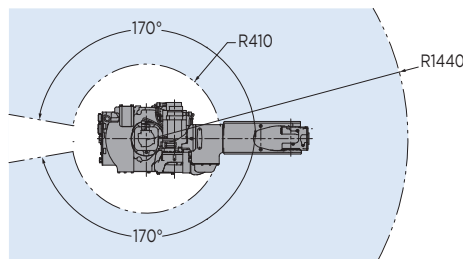
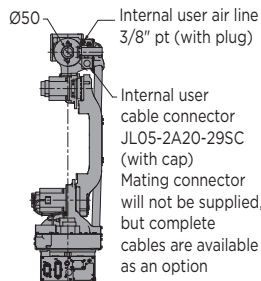
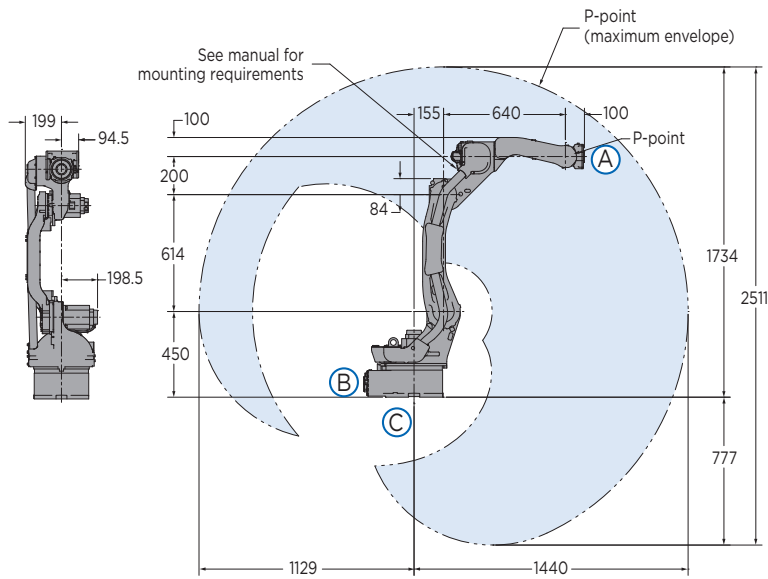
FS100



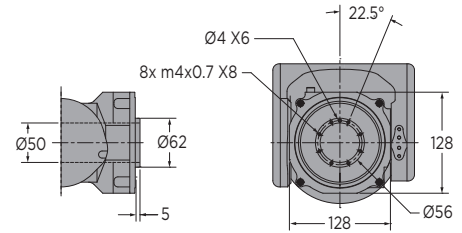
MLX100

- Slim, fast six-axis MA1440 welding robot increases productivity and achieves highest welding performance.
- Large, 50 mm thru-hole for torch cabling, sensor wires and water cooling. Eliminates cable interference, simplifies programming and reduces cable wear.
- 6 kg payload supports motorized torches and sensors.
- Hollow upper arm maintains optimum bend radius of welding torch cable, maximizing weld performance. T-axis can rotate torch ± 210 degrees without cable interference.
- New, contoured arm design reduces interference with jigs and large parts.
- Optimized mounting area for feeder reduces interference.
- Minimal U-axis cable protrusion eliminates peripheral equipment interference.
- Symmetric wrist profile provides equal torch access to both sides of part.
- Ideally suited for use in high-density workcells with multiple robots working in close proximity.
- Slim arm allows easy access to parts in tight spots and avoids potential interference with fixtures.
- Floor-mounted model is standard. Wall- or ceiling-mounted versions are available.
- Also available with increased 12 kg payload capacity (MH12) for material handling applications.

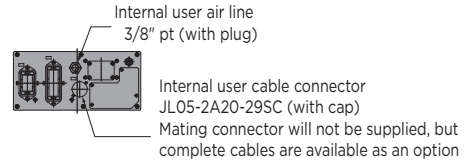
MA1440 ROBOT



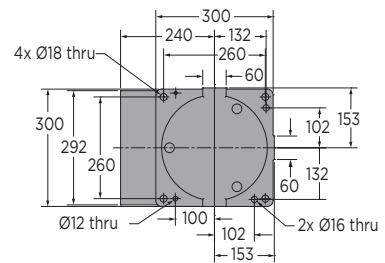
VIEW A



VIEW B



VIEW C



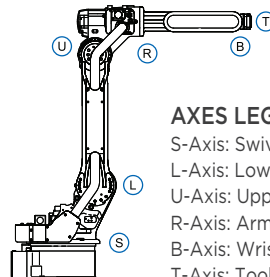
All dimensions are metric (mm) and for reference only.
Request detailed drawings for all design/engineering requirements.

SPECIFICATIONS

Axes	Maximum motion range [°]	Maximum speed [°/sec.]	Allowable moment [N•m]	Allowable moment of inertia [kg•m ²]	Controlled axes	6
S	±170	230	-	-	Maximum payload [kg]	6
L	+155/-90	200	-	-	Repeatability [mm]	±0.08
U	+240/-175	230	-	-	Horizontal reach [mm]	1,440
R	±150	430	10.5	0.28	Vertical reach [mm]	2,511
B	+90/-135	430	10.5	0.28	Temperature [°C]	0 to +45
T	±210	630	3.2	0.06	Humidity [%]	20 - 80
					Weight [kg]	130
					Power rating [kVA]	1.5
					Internal I/O cable (feeder control)	18 conductors
					Internal gas line	(1) 3/8" connection

OPTIONS

- Extended length manipulator cables
- Robot risers and base plates
- Wide variety of fieldbus cards
- Vision systems
- Seam tracking and seam finding packages
- Variety of weld packages



AXES LEGEND

- S-Axis: Swivel Base
- L-Axis: Lower Arm
- U-Axis: Upper Arm
- R-Axis: Arm Roll
- B-Axis: Wrist Bend
- T-Axis: Tool Flange

Yaskawa America, Inc.
Motoman Robotics Division

100 Automation Way
Miamisburg, OH 45342
Tel: 937.847.6200
Fax: 937.847.6277

motoman.com

YASKAWA