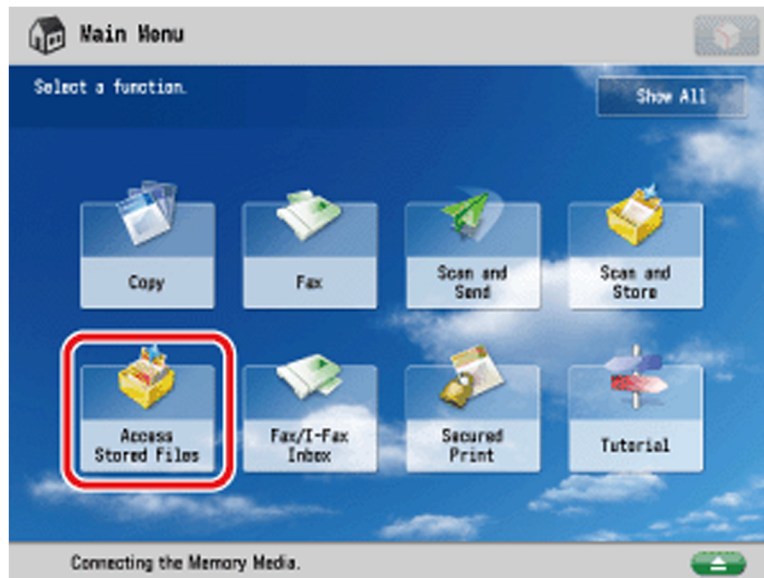


PRINTING FILES STORED IN A MEMORY MEDIA

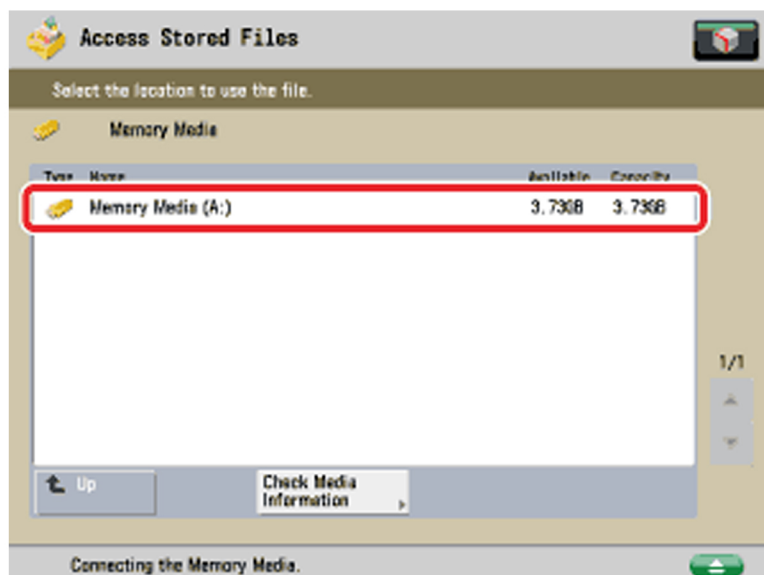
Step 1 - 'Press Access Stored Files' on the Main Menu screen



Step 2 - Press 'Memory Media'



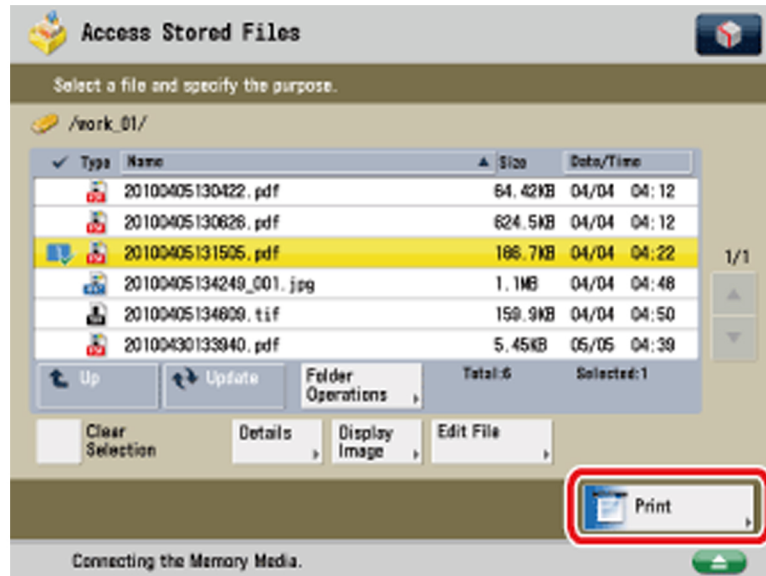
Step 3 - Select the desired memory media



PRINTING FILES STORED IN A MEMORY MEDIA

Step 4 - Browse to the level (folder) where the file you want to print is stored

Step 5 - Select the file you want to print and press 'Print'.



If there are seven or more stored files, press ▲ or ▼ to scroll through the stored files.

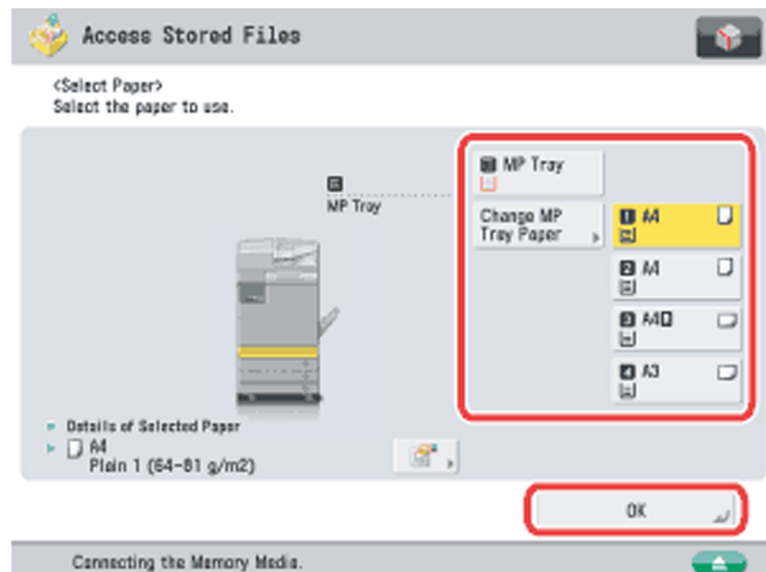
You can select and print multiple files with the same settings if they are in the same file format.

However, you can only print up to six files at a time.

You cannot select and print multiple files if their file formats, such as PDF and JPEG, are different from each other.

- The selected files are numbered in the order specified, and are printed in that order.
- You can cancel a selection by selecting the file again.
- To cancel all files, press [Clear Selection].
- When there are two or more files stored in the memory media, you can press [Name] or [Date/Time] to sort the list of files.
- When you close the memory media after sorting the files, the files will be unsorted the next time you open the memory media.
- If you press [Name], or [Date/Time] with a file selected, that file is unselected, and the top of the file list is displayed.

Step 5 - If the 'Select Paper' screen is displayed, select the paper source then press 'ok'.



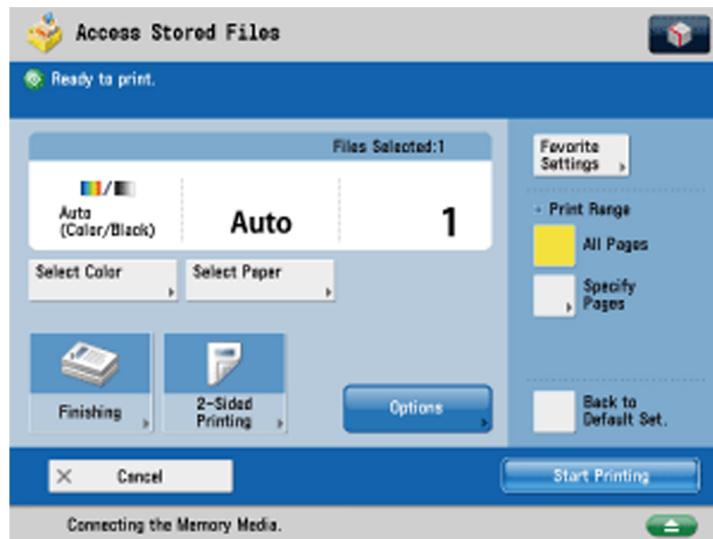
The Select Paper screen is displayed only if you are printing a JPEG or TIFF file.

If you are printing a PDF file, Auto Select Paper is selected.

To change the paper source, see step 3 of "Paper Selection."

PRINTING FILES STORED IN A MEMORY MEDIA

Step 7 - Select the print settings on the Print Settings Screen.



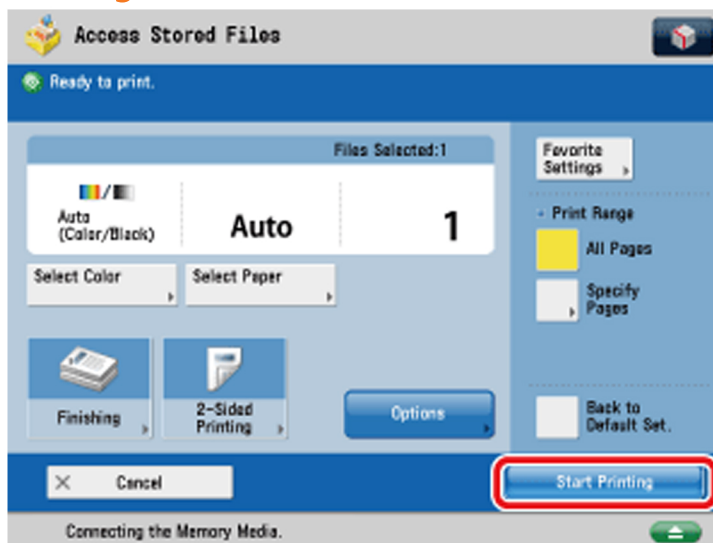
To change the number of prints, enter the desired number using 0-9 (numeric keys).

To print all pages, press 'All Pages'.

To specify which pages to print, press [Specify Pages] and specify the first and last pages of your desired print range.

You can set paper selection, 2-Sided printing, finishing, and special features on the Print Settings screen.

Step 8 - Press 'Start Printing'



If there is a current or reserved print job, the machine will start printing your file after that job is complete. When printing starts, the following screen appears.

