

# K-12 Connectivity Solutions



# Table of Contents

## **THE KAJEET STORY**

Dads on a Mission  
A Focus on Education  
Create a Connected School District with Kajeet  
Kajeet Network Guarantee  
Join Schools & Districts Across the Country

## **KAJEET SENTINEL®**

Sentinel Features  
Educational Filters & Secure Access  
Data Management  
Reporting & Analytics  
Time-of-Day Controls

## **KAJEET STUDENT ACCESS™**

Student Access Features  
SmartSpot™  
Chromebook Bundle  
Embedded Device

## **KAJEET SMARTBUS™**

SmartBus Features  
The Connected Bus

## **KAJEET CONNECT™**

Connect Features  
Kajeet Connect BackUp™  
Kajeet Connect Prime™

## **MOBILE DEVICE MANAGEMENT**

Mobile Device Management Features  
Classroom Management  
Parent Portal

## **HOW TO KAJEET**

## **KAJEET DATA PLANS**



# The Kajeet Story

## DADS ON A MISSION



*Co-founders Ben Weintraub and Daniel Neal launching the Kajeet cell phone business in 2006.*

The Kajeet story began more than 15 years ago with three dads figuring out how mobile technology, kids, and parents work best together. The solution was a cell phone built for kids.

We wanted kids to be agile with technology, to be empowered and safe, and we wanted to help them respond with confidence to what's happening in their world. Not incidentally, we want parents, educators, and guardians to be involved too.

As technology, and how kids access it changed, so did Kajeet. We transitioned from cell phones to student connectivity. But the core of all Kajeet solutions stayed the same – providing kids and their families the tools they need to safely navigate the digital world.

## A FOCUS ON EDUCATION

Kajeet connectivity solutions are built for K-12. We design our solutions and resources with students, educators, and parents in mind. As school technology evolves, so does Kajeet. We continually expand our offerings to meet the ever-changing needs of schools and districts. With Kajeet, you have a true K-12 connectivity partner.



### Student Success

Kajeet is committed to connecting every student to the online resources they need to succeed.



### Program Support

A dedicated Kajeet Account Manager will be there every step of the way to ensure your program is a success.



### CIPA-Compliant Filters

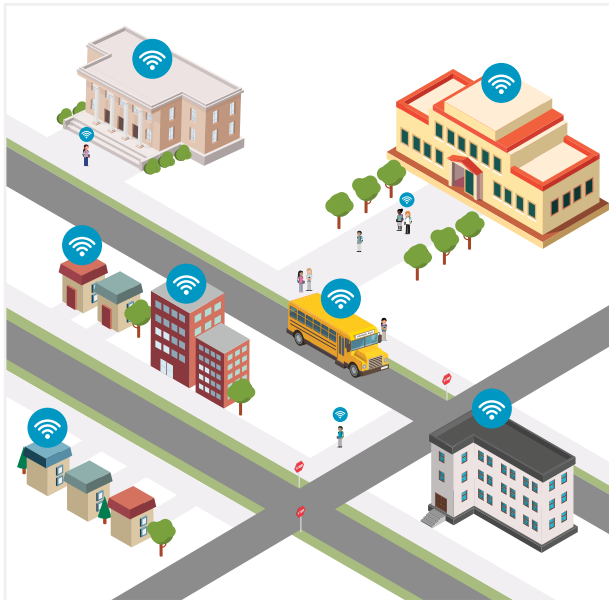
CIPA-compliant filters provide students with a safe, focused online learning experience.



### Educator Resources

Kajeet offers an array of reports, guides, and templates to help you get the most out of your ed tech programs.

## CREATE A CONNECTED SCHOOL DISTRICT WITH KAJEET



When students have access to reliable Internet, they are more likely to succeed academically.

Our goal is to help schools, districts, and communities create a safe, connected environment for students and their families.

### Kajeet connects K-12:

- Student Devices
- School Buses
- Athletic & Activity Buses
- Classrooms
- School Buildings
- District Offices
- Testing Centers
- Community Centers
- Public Libraries

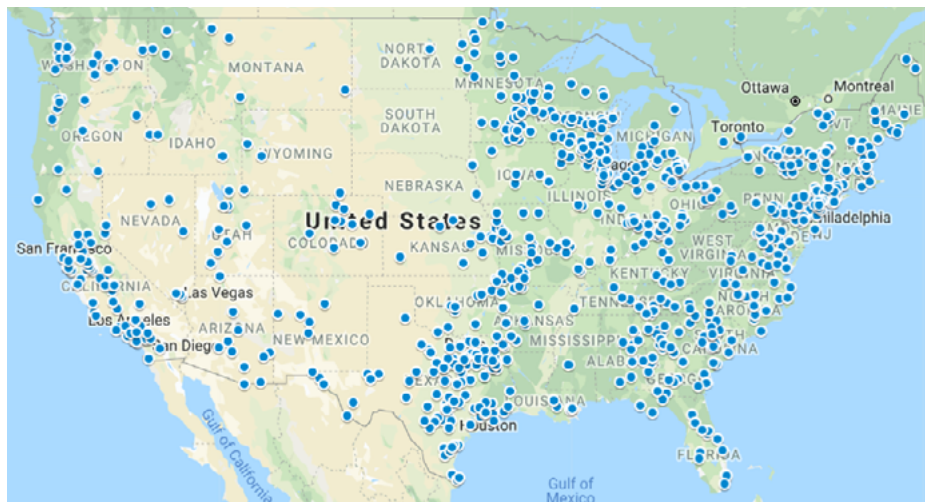
## KAJEET NETWORK GUARANTEE



Kajeet guarantees that your students will have access to educational content on the fastest, most reliable cellular network available in your area.

Kajeet operates on all six major North American wireless networks; so, we can ensure that your connectivity program receives the best coverage.

## JOIN SCHOOLS & DISTRICTS ACROSS THE COUNTRY



# Kajeet Sentinel®



## PROTECTING THE K-12 MOBILE WORLD

Kajeet Sentinel gives school and districts the ability to provide their students with access to online educational content, filtering out unsafe and non-educational material.

The portal allows administrators to manage data allocations across multiple North American carriers, and track how students use devices and online resources.

## SENTINEL POWERS KAJEET CONNECTIVITY SOLUTIONS



Student Access™



SmartBus™



Connect BackUp™



Connect Prime™



## SENTINEL FEATURES

- User-friendly dashboard.
- Detailed visibility into student device usage.
- Analyzes and categorizes millions of URLs daily.
- Device check-in/check-out functionality.



Educational Filters



Reporting & Analytics



Data Management



Time-of-Day Controls

## EDUCATIONAL FILTERS & SECURE ACCESS

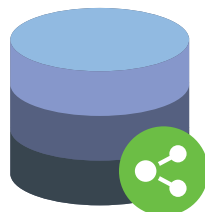
Keep students on-task with filters that automatically block inappropriate, non-educational, and harmful (i.e. phishing, cyber threats) content. The Kajeet team will work with you to ensure students remain safe and focused on schoolwork when using Kajeet devices for Internet access.



- CIPA-compliant (Children’s Internet Protection Act).
- Preset (K-8 or 9-12) or customizable filters available.
- Supports Google SafeSearch.
- Supports YouTube Restricted Mode.

## DATA MANAGEMENT

Choose how to use data across time (i.e. daily, monthly), Kajeet devices, and networks.



- Manage data allocations on any six 4G LTE North American networks.
- Customize data usage per device\*.
- Pool and share data among Kajeet devices\*.

*\*Available on the Kajeet Custom™ plan only (see page 15 for more information).*

## REPORTING & ANALYTICS

Use the Kajeet Sentinel Dashboard to see real-time reports and analytics of how students use Kajeet devices to access the Internet, and for how long. Reports available to run include:



- Top allowed domains and top blocked domains.
- Top allowed and denied categories of websites visited.
- Number of hours spent online accessing schoolwork.
- Drill down to one user or view entire school district’s usage.

## TIME-OF-DAY CONTROLS

Students also need time to recharge, and that means taking the time to get a full night’s sleep. Set time-of-day controls to ensure students have appropriate time for sleep, and a break from screens, by turning off access to Kajeet-powered devices at night.



- Preset controls to turn off access at 11 p.m. until 6 a.m.
- Customizable time-of-day controls available.

# Kajeet Student Access™



## ANYTIME, ANYWHERE ACCESS

Portable, filtered Wi-Fi hotspots and embedded devices connect students outside the classroom. You choose the device and Kajeet Education Broadband™ data plan that is right for you.

Each plan comes with Kajeet industry-leading K-12 specific filters, data, controls, reporting, and personable customer service.

## CHOOSE HOW STUDENTS CONNECT



Kajeet SmartSpot®



Chromebook Bundle



Embedded Device



## STUDENT ACCESS FEATURES

- Access to Kajeet Sentinel cloud portal.
- Available on six North American wireless networks.
- Device check-in/check-out functionality.
- Usage and data reporting.



Educational  
Filters



Reporting  
& Analytics



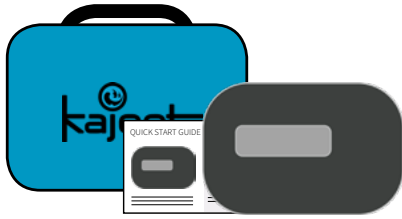
Data  
Management



Summer  
Suspend

## SMARTSPOT

The Kajeet SmartSpot is a filtered Wi-Fi hotspot connecting students anywhere, anytime. This portable hotspot connects any mobile device to safe and educational Internet.



- Close the Homework Gap in your school or district.
- Work directly with Kajeet to choose the network(s) with the best coverage for your students.
- Includes carrying case for easy student transportation.

## CHROMEBOOK BUNDLE

The Kajeet Chromebook Bundle ensures students can connect to anywhere, anytime learning on durable, easy-to-use Chromebooks. Provide students with an enhanced classroom experience with a **Chromebook built for education**, and ensure they continue learning at home by connecting to 4G LTE Internet via the **Kajeet SmartSpot**.

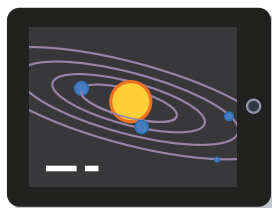


### The Kajeet Chromebook Bundle includes:

- Built-for-students, durable Chromebook.
- On-the-go connectivity with the SmartSpot.
- Drop-proof, all-in-one case to hold both devices.
- Data for the entire school year.
- Mobile Device Management (MDM) already embedded, including Classroom Management and Parent Portal features.

## EMBEDDED DEVICE

Schools and districts can also work with Kajeet to connect 4G LTE embedded devices to the Internet.



- Choose to embed a SIM card from any of six North American wireless networks.
- Provide filtered Internet access directly from the student's mobile device.

Register for Weekly Student Access Webinar ⇨

[www.kajeet.com](http://www.kajeet.com)



# Kajeet SmartBus™



## RIDING THE CONNECTED BUS

Turn travel time into instructional time. Kajeet extends the classroom and helps improve student behavior, and overall safety, by providing more than just Internet on the school bus.

School bus Wi-Fi also allows schools to easily connect bus technologies, including cameras, telematics, driver tablets, and more.

## ADD LEARNING TIME WHILE TRAVELING ON THE BUS



Long Routes



Athletic Buses



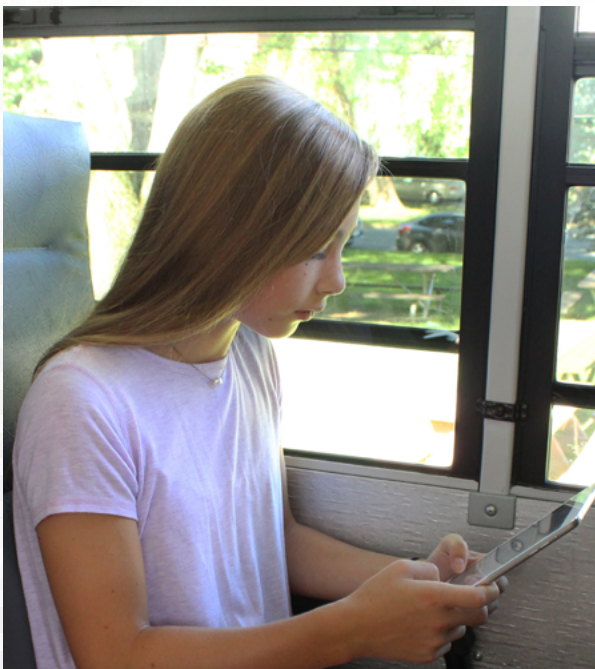
Activity Buses



Book Mobiles



Maker Buses



## SMARTBUS FEATURES

- Access to Kajeet Sentinel cloud portal.
- Available on six North American wireless networks.
- Pool and share data among buses.
- Ruggedized cellular router and antenna.



Educational Filters



Reporting & Analytics



Data Management

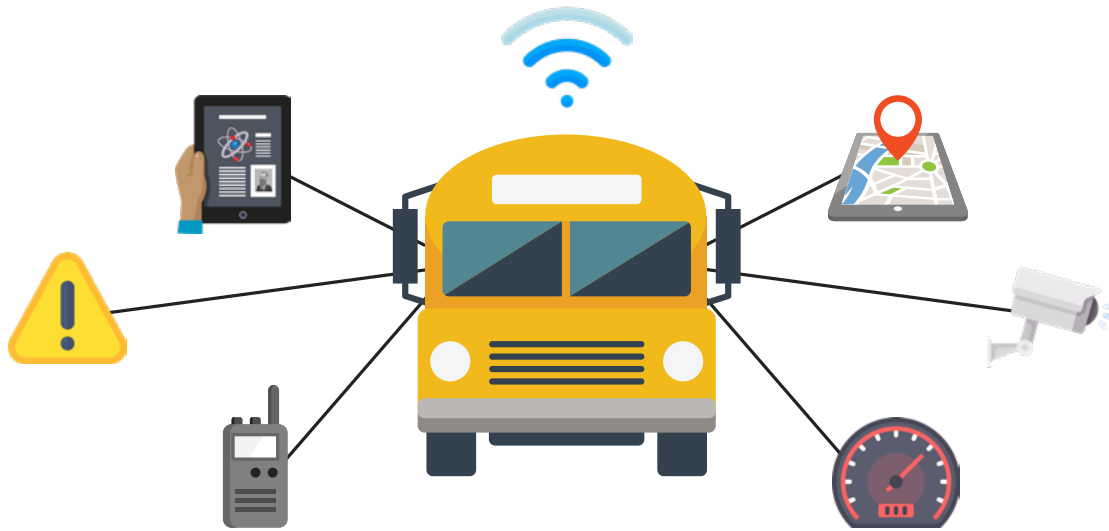


Connect Bus Technologies

## THE CONNECTED SMARTBUS

Stay alert of anything and everything happening on the school bus, keeping students safe as they travel. The Kajeet SmartBus powers the Connected Bus with Wi-Fi, propelling school buses into the future by connecting technology on the school bus to ensure a safe ride.

Here is how Kajeet creates the Connected School Bus.



### Student Wi-Fi

Connect students on the school bus to provide additional learning time.

### GPS

Locate school buses in real-time and track historical information.

### Intelligent Sensors

Receive instant, automated alerts of critical situations taking place on the school bus.

### Camera Offload

Automatically download video camera data from the school bus to the school's server.

### Push-to-Talk (PTT)

Instantly communicate from dispatch to bus drivers with the push of a button.

### Telematics

Receive wireless engine updates to service and maintain an entire school bus fleet.

[Register for Weekly SmartBus Webinar](#) ⇨

[www.kajeet.com](http://www.kajeet.com)

# Kajeet Connect™



## CONNECTIVITY FOR EVERY SCHOOL

The Kajeet Connect Suite brings Internet access to schools. Avoid losing critical IT functions and instructional time when building networks go down with Kajeet Connect BackUp™. Or if a district or community building lacks reliable access, Kajeet Connect Prime™ serves as the main Internet.

## RELIABLE INTERNET WHEN & WHERE YOU NEED IT MOST



Network Failover



Testing Centers



Remote Buildings



Community Centers



## CONNECT FEATURES

- Access to Kajeet Sentinel cloud portal.
- Available on six North American wireless networks.
- Enterprise-grade 4G LTE Advanced router(s).
- Pool and share data among routers.



Customized Filters for Optimized Use



Reporting & Analytics



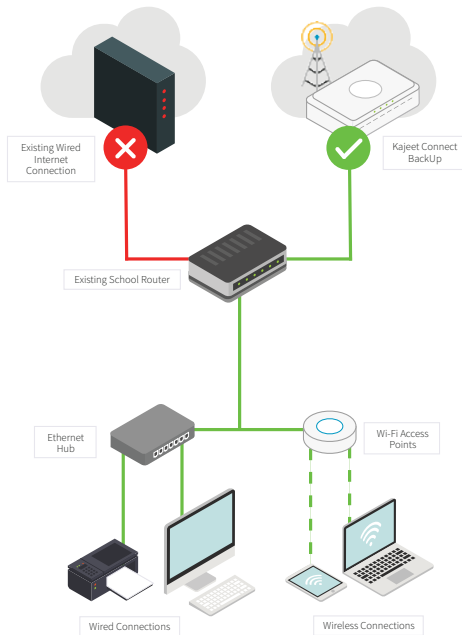
Data Management



Network Security

## KAJEET CONNECT BACKUP™

**Avoid losing critical IT functions and instructional time when the network fails.** Kajeet Connect BackUp is an automated failover solution if building routers lose Internet connectivity.



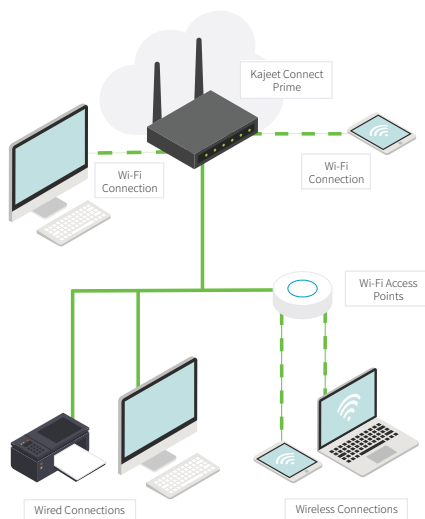
- Keep the district office and classrooms running.
- No monthly fees, no surprise overage charges.
- Drop into existing network for a turnkey failover solution.
- Always on, automatically available.
- Ensure VoIP phone systems stay connected.
- **Optional:** View router location with GPS capability.
- **Optional:** Installation and configuration support.

**Looking for a more powerful failover solution? Ask us about Kajeet Connect BackUp Advanced. Experience the same features as Connect BackUp, plus:**

- A more robust router.
- **Add-On:** External cellular antennas.
- Wi-Fi connectivity (up to 256 connections).
- **Add-On:** Kajeet Dual Connect™ (two active cellular networks).

## KAJEET CONNECT PRIME™

**Ensure your school buildings can connect to the Internet consistently, without being tethered to a typical landline.** The wireless Kajeet Connect Prime solution serves as the main Internet connection for everyday building and classroom connectivity.

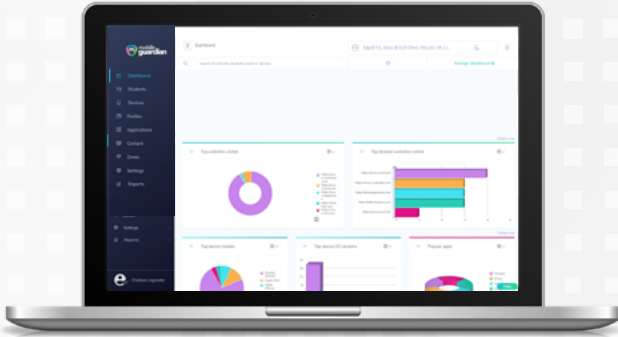


- Filtered Internet access for optimal, educational data use.
- Connects school locations that cannot reach a wired connection.
- 10 WAN/LAN switchable Ethernet ports.
- Optimized for WAN diversity with integrated wired and wireless 4G WAN.
- Gigabit dual-band, dual-concurrent Wi-Fi 802.11 a/b/g/n/ac.
- GPS capability to view router location in Kajeet Sentinel.
- **Add-On:** Kajeet Dual Connect (two active cellular networks).
- **Add-On:** External cellular antennas.

**Register for Weekly Connect Webinar ⇨**

**[www.kajeet.com](http://www.kajeet.com)**

# Mobile Device Management



## SIMPLY MANAGE ALL STUDENT DEVICES & CONTENT

Kajeet helps schools and districts manage countless student mobile devices with a powerful, made-for-education mobile device management (MDM) solution. The easy-to-use platform supports safe, collaborative classroom and home learning while giving school districts total insight into devices, content, and student use.

## OPERATING SYSTEM (OS) AGNOSTIC



Android



Chromebook



iOS



MacOS



## MOBILE DEVICE MANAGEMENT FEATURES

- Manage devices regardless of OS in one dashboard.
- School district dashboard and individual school dashboard.
- Teacher Classroom Management portal.
- Parent Portal improves engagement between student, teachers, and parents or guardians.



Website & Keyword Filtering



Geolocation Services



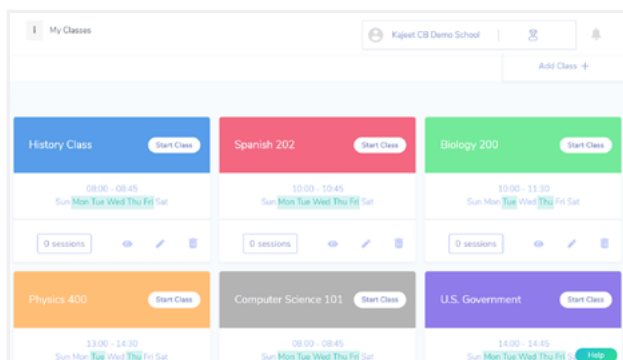
Remote Application Management



Remote Content Delivery

## CLASSROOM MANAGEMENT

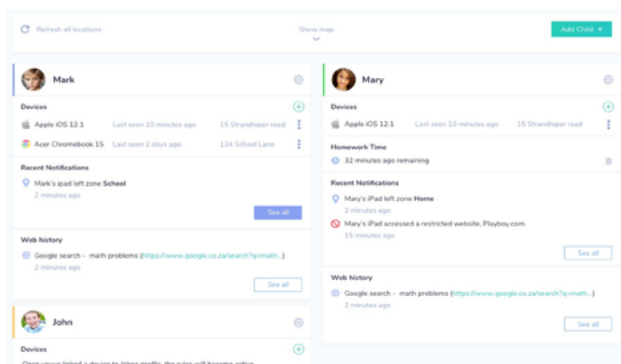
Teachers can eliminate online distractions and manage students by class with the Kajeet Classroom Management tool. Create engaging lessons, personalize content, and ensure students are on task in class.



- Easily add students to an online classroom to manage students by class.
- Message students, view their screens, or lock screens to signal heads-up time.
- Add tailored content to student devices prior to class time.
- Download applications students need to access.

## PARENT PORTAL

The Kajeet MDM Parent Portal is an additional dashboard component of the Kajeet MDM solution. Kajeet provides a set of tools, allowing schools to delegate visibility and control to parents when their student has a mobile device outside of school, without impacting school or district filtering policies during classroom time.



### With the portal, parents can:

- Easily add their child (or children) to their dashboard.
- Guide their child's online activity by blocking inappropriate websites, apps, and YouTube content.
- Know their child's location based on the device's geolocation.
- Set timing rules for when their children can use their device.

Register for Weekly MDM Webinar ⇨

# How to Kajeet

Here is how you can move forward with complete connectivity in your district, school, or library.

## 1. CHOOSE HOW AND WHERE STUDENTS CONNECT

Do you have students without Internet at home? Or maybe you want to extend the classroom to the school bus. For any and all of your connectivity needs, Kajeet is the solution.

Plus, you can combine Kajeet solutions for the ultimate connected school district!



Student Access



SmartBus



Connect BackUp



Connect Prime

## 2. CHOOSE YOUR DATA PLAN

All Kajeet solution data plans include CIPA-compliant, filtered Internet access to ensure students safely and securely connect to Wi-Fi while completing schoolwork.

### Kajeet Complete™

The turnkey Education Broadband plan that is less work for educators.

### Kajeet Custom™

The customizable Education Broadband plan allowing maximum flexibility.

## 3. CHOOSE NUMBER OF DEVICES & NUMBER OF MONTHS





How many students or school buildings do you need to connect? Do you need access over the summer months? Kajeet can help you answer these questions, and others, ensuring every student has the access they need to succeed.

## 4. CHOOSE YOUR NETWORK

Kajeet operates on all six major North American 4G LTE wireless networks. Kajeet education consultants will work with you to determine the best coverage in your area. You can even choose multiple carriers for your program to ensure every student has access, wherever they are.

# Kajeet Data Plans

Ensure students succeed by providing more than just Internet through safe, affordable access.

	KAJEET COMPLETE	KAJEET CUSTOM
Kajeet Program	<p><b>Student Access</b></p> 	<p><b>Student Access</b>      <b>SmartBus</b>      <b>Connect Suite</b></p> 
Plan Description	<p>The Kajeet Complete Education Broadband plan is a turnkey program designed to fully support your technology initiatives.</p> <p>Kajeet manages the data and device controls, default K-12 and CIPA-compliant filters, reports, and provides technical support.</p> <p><b>Kajeet Manages</b></p>  <p>CIPA-Compliant Filters      Data Consumption Controls      Time-of-Day Access Controls</p>	<p>The Kajeet Custom Education Broadband plan is the perfect plan for IT staff that want maximum flexibility and customization.</p> <p>With Kajeet Custom, IT can personalize data and device controls to fit their program needs, along with managing filters and reports.</p> <p><b>Custom Controls</b></p>  <p>Educational Filters      Data Consumption Controls      Time-of-Day Access Controls</p>
Data Plan	<p><b>Choose Data Amount Needed</b></p> <p><b>Kajeet Complete 200:</b> 200MB per day, per student.</p> <p><b>Kajeet Complete 500:</b> 500MB per day, per student.</p> <p><b>Kajeet Complete Unlimited:</b> Unlimited* data per month, per student.</p> <p><small>*Restrictions may apply. Contact Kajeet for more information.</small></p>	<p><b>Choose Data Amount Needed</b></p> <p>Plans begin at 1GB per line, per month.</p> <p>Ideal for all programs, including virtual schools, libraries, school buses, and campus connectivity.</p>

[Learn More About Our Plans & Pricing](#) ⇨





[www.kajeet.com](http://www.kajeet.com)

+1 240-482-3500

[sales@kajeet.net](mailto:sales@kajeet.net)