



External Threat Protection



# Carbon Black.

Next-Gen Endpoint Security

## IntSights for Carbon Black

### Cyber Intelligence for Proactive Threat Blocking

IntSights and Carbon Black have joined forces to combine tailored threat intelligence from the open, deep, and dark web with next-gen endpoint security solutions. This powerful integration of cybersecurity technologies gives enterprises the protection they need to proactively detect and block emerging threats before they become attacks that disrupt business operations, compromise networks, and damage brand reputation.

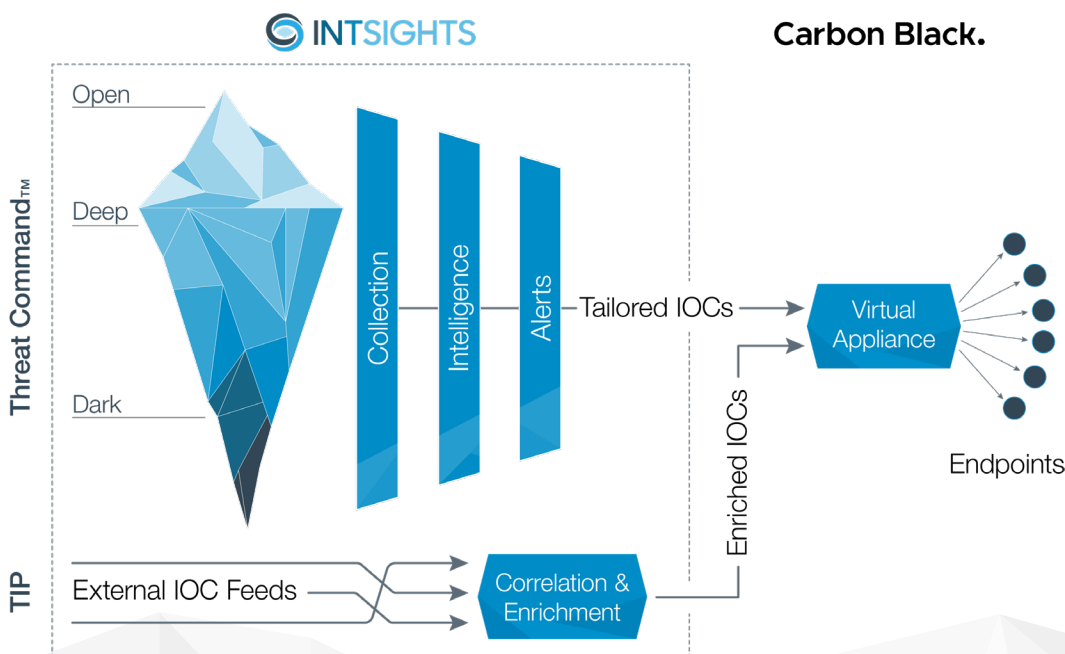
### Integration Overview: How It Works

IntSights automatically updates CB Response, Carbon Black's threat hunting and incident response solution, with the latest tailored intelligence from the open, deep, and dark web. This improves an organization's ability to detect early-stage attacks designed to exploit its perimeter defenses, operations, and people. IntSights visualizes how suspicious domains, for example, connect to other IOCs, such as malicious IPs, file hashes, phishing sites, and known malware, and prevents these threats from reaching endpoints.

CB Response initiates calls to the IntSights Threat Intelligence Platform every 60 seconds to retrieve prioritized alerts, which are synced in order to automatically update the blocklist of specified IOCs associated with verified threats.

### Integration Benefits

- Broad visibility into cybercrime ecosystem
- Endpoint security powered by tailored threat intelligence
- Automated external threat blocking
- Early detection and mitigation of targeted attacks
- Actionable alerts and prioritized remediation strategies
- Real-time threat investigation and management
- Focused digital risk protection
- Reduced enterprise cyber risk



Click [here](#) to watch a brief demo of the IntSights Carbon Black integration.

[Contact us](#) today to schedule a personalized 30-minute demonstration of the IntSights Threat Intelligence Platform.

## IntSights Cyber Intelligence

IntSights fuels proactive cyber defense strategy by transforming external threat reconnaissance into automated security action. IntSights continuously scours the open, deep, and dark web to identify emerging risks, correlates millions of threat data points, and delivers contextual insights about specific threats to your organization.

## IntSights Threat Intelligence Platform Features and Capabilities

- Aggregates and analyzes millions of external interactions and suspicious threat indicators potentially targeting your brand, digital assets, employees, and customers
- Continuously monitors and updates enterprise digital footprint and external risk profile
- Automates threat blocking by enriching and pushing IOCs and suspicious IPs, domains, hashes, and apps to endpoint security devices
- Correlates tailored threat intelligence with endpoint data for customized high-priority alerts and real-time focused protection

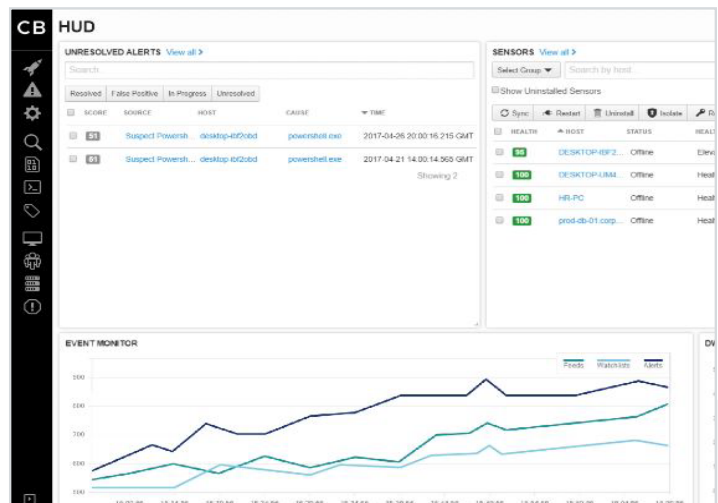


## Carbon Black Endpoint Security

The CB Response solution delivers unfiltered visibility into endpoint events, highly scalable threat hunting capabilities, the ability to conduct investigations faster, and the power to rapidly respond and remediate active attacks.

## CB Response Features and Capabilities

- Captures activity record of every endpoint
- Shows attack chain visualizations for visibility into every attack stage
- Rapidly pinpoints threats
- Automatically detects suspicious behavior
- Correlates network, endpoint, and SIEM data
- Minimizes attacker dwell time
- Isolates infected systems and removes malicious files
- Collects and stores forensic data for post-incident investigation



### About IntSights

IntSights is revolutionizing cybersecurity operations with the industry's only all-in-one external threat protection platform designed to neutralize cyberattacks outside the wire. Our unique cyber reconnaissance capabilities enable continuous monitoring of an enterprise's external digital profile across the open, deep, and dark web to identify emerging threats and orchestrate proactive response. Tailored threat intelligence that seamlessly integrates with security infrastructure for dynamic defense has made IntSights one of the fastest-growing cybersecurity companies in the world. IntSights has offices in Amsterdam, Boston, Singapore, Tokyo, New York, Dallas, and Tel Aviv. To learn more, visit: <https://www.intsights.com>.

### About Carbon Black

Carbon Black (NASDAQ: CBLK) is a leader in endpoint security dedicated to keeping the world safe from cyberattacks. The company's big data and analytics platform, the CB Predictive Security Cloud (PSC), consolidates endpoint security and IT operations into an extensible cloud platform that prevents advanced threats, provides actionable insight, and enables businesses of all sizes to simplify operations. By analyzing billions of security events per day across the globe, Carbon Black has key insights into attackers' behavior patterns, enabling customers to detect, respond to, and stop emerging attacks.

More than 5,000 global customers, including 34 of the Fortune 100, trust Carbon Black to protect their organizations from cyberattacks. The company's partner ecosystem features more than 500 MSSPs, VARs, distributors, and technology integrations, as well as many of the world's leading IR firms, who use Carbon Black's technology in more than 500 breach investigations per year.

Carbon Black and CB Predictive Security Cloud are registered trademarks or trademarks of Carbon Black, Inc. in the United States and/or other jurisdictions.