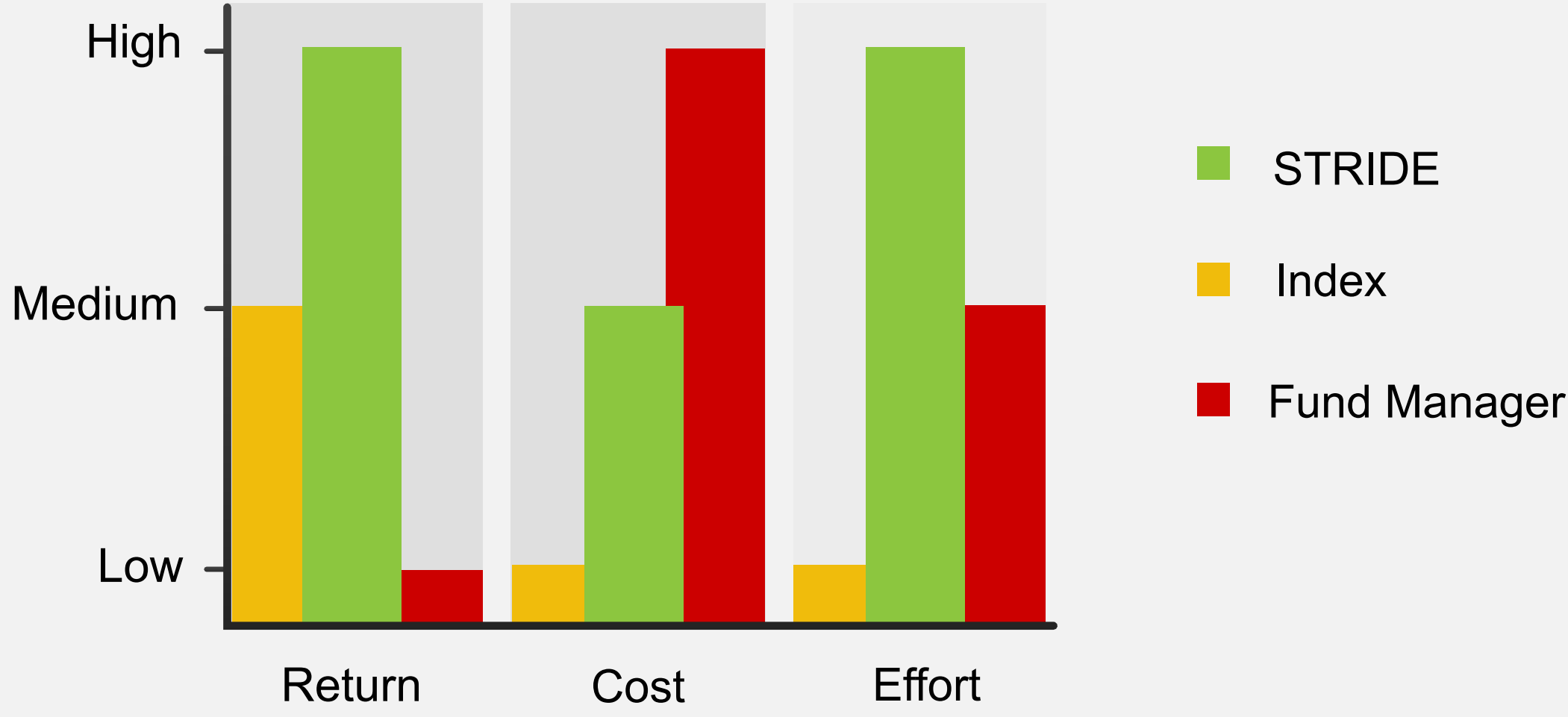




STRIDE

The Best Investment Strategy For You

A Comparison of STRIDE, Fund Managers and Index Funds



Investment Strategies

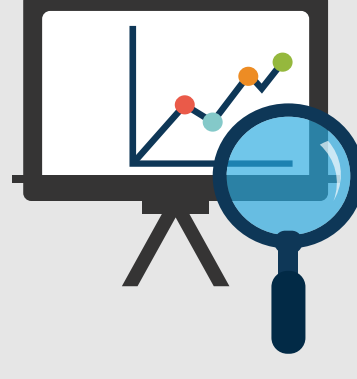
OPTION
01

STRIDE



OPTION
02

Index



OPTION
03

Fund Manager



STRIDE is a stock picking and portfolio management tool. It does not invest in stocks for you, but provides you with clear insights and guidance as to which stocks to buy, hold or sell, and when to do so. The engine does the work, and you reap the rewards.

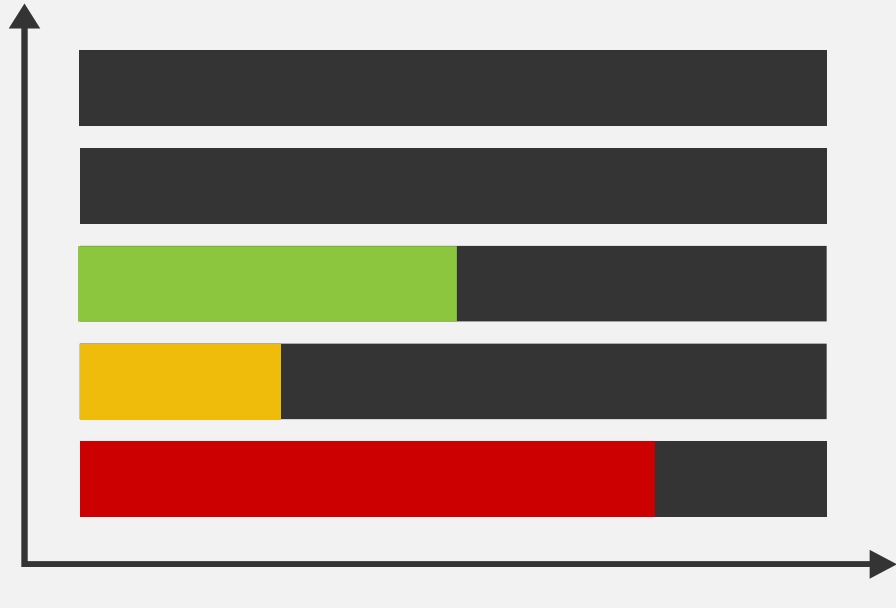
An index fund is a type of mutual fund, but where its portfolio has been constructed to track the workings of a market index. An index mutual fund offers low costs, and low, consistent, returns. For this section, we analysed the average performances of the S&P 500, FTSE 100 and the Stoxx Euro 600.

A fund manager is the person responsible for creating and carrying out a fund's investment strategy, and then managing its portfolio of trading. For this section we analysed the data from BlackRock, Vanguard Asset Management (UK and USA/EU), State Street Global Advisors and Carl Icahn's actively managed mutual fund.

INVESTMENT: US\$100,000 - AVERAGE YIELD TIME: 3 years

A

Annual Expense Ratio



0.499% Medium = US\$499

0.314% Lowest = US\$314

1.173% Greatest = US\$1,173

B

Annual 3-Year Yield



17.73% = \$63,180

6.84% = \$21,960

3.29% = \$10,200

C

Method

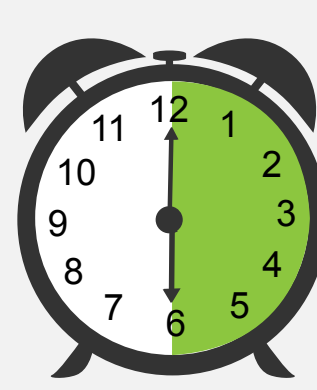
You subscribe to STRIDE and the engine does all the hard research. You are then advised which stocks to buy, hold or sell.

You will first do some research into which index you prefer, based on selected metrics. You then simply invest your money and allow it to track the chosen index.

You hand over your money to a fund manager and, after deciding on a risk level, they manage your investment for you by choosing which securities your money is put into.

D

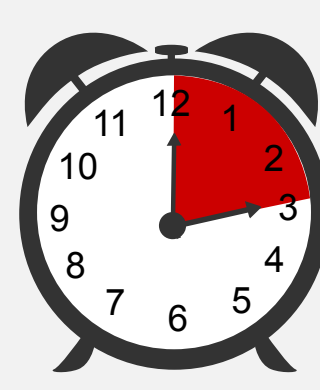
Effort



Requires a continuous time commitment with weekly check-ins, but little effort to analyse and you're in full control.



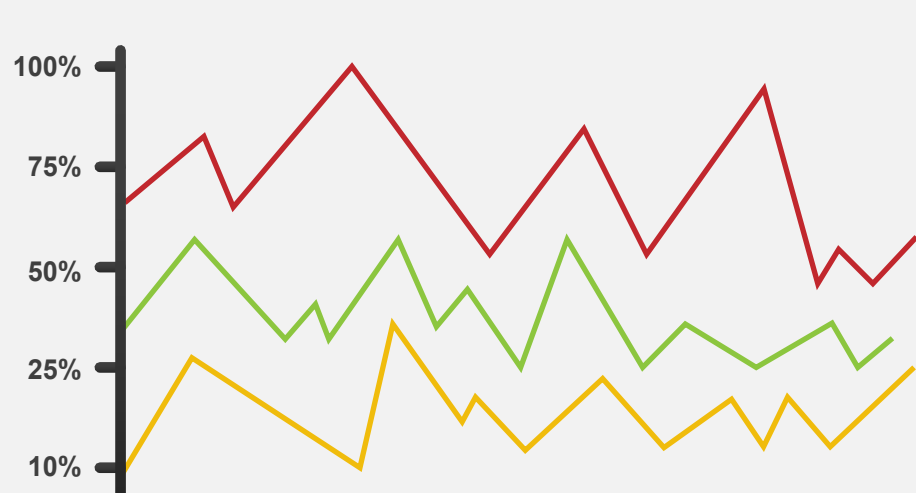
Requires very little time and effort, as once you have made your investment decision, it is a long-term investment game.



Requires consistent monthly meetings with your fund manager to give decisions the green or red light. However, you are not in complete control of your investment.

E

Risk



LOW-MEDIUM RISK

LOW

MEDIUM-HIGH RISK

Diversification and the long-term nature of our investment strategy helps eliminate risk when using the STRIDE platform.

The market will almost always go up over time. Hence, this is the safest investment option, but you will very rarely make higher than average returns.

You're not in control of your investment, which means you're relying on another individual's informed opinion. Most fund managers lose money.

F

Diversification



STRIDE
HIGH



Index
LOW



Fund Manager
MEDIUM

For a High-Return, Low Risk and Low Cost Investment Strategy, try STRIDE

Get My Free Trial



STRIDE