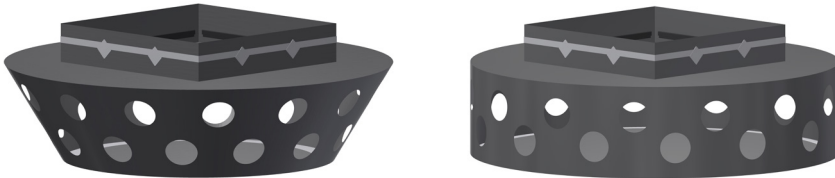


Product Data

Face Options

- 30° Angle Diffusion Flat Diffusion



Size Options

- 30 ton 20 ton 10 ton
 25 ton 15 ton 5 ton

Size (ton)	Nominal CFM at 0.5" SP	Sq. Inlet Size (in)	Top Dia. (in)	Depth (in)	30° Bottom Dia. (in)
30	12,000	42	78	15	60
25	10,000	38	72	15	54
20	8,000	34	66	15	48
15	6,000	30	60	15	42
10	4,000	24	52	15	34
5	2,000	18	44	15	26

Inlet Options

- Square (Standard)
 Round

Fabric Type Options

- Standard Porous
 Custom _____
(Additional charges may apply)

Fabric Type Options

- Black
 White
 Silver
 Tan
 Green
 Blue
 Red
 Custom _____
(Additional charges may apply)

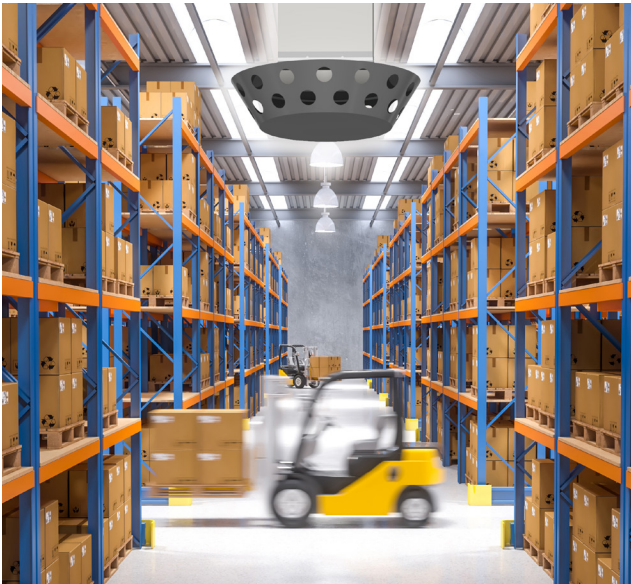
Throw Options

- Regular Throw

Size (ton)	0.5" SP 150 fpm	100 fpm	50 fpm	NC Level
30	38	57	91	56
25	38	57	91	51
20	38	57	91	46
15	38	57	91	43
10	34	51	82	40
5	19	28	45	37

- Extended Throw

Size (ton)	0.5" SP 150 fpm	100 fpm	50 fpm	NC Level
30	61	91	146	56
25	61	91	146	51
20	61	91	146	46
15	61	91	146	43
10	53	80	128	40
5	28	43	69	37



FEATURES

- **360° Airflow coverage**
Not limited the traditional 4 or 6 sides
- **Available with two throw lengths**
Throws length equal to typical drum diffusers for extended distances
- **Available with flat or 30° angle diffusion**
- **Available with round or square top inlet**
Square top inlets have edge seal to prevent leakage

FABRIC SPECIFICATIONS

WEAVE: Fire Retardant Polyester
Filament/Filament Twill

WEIGHT: 6.8oz/yd² (231g/m²)

POROSITY: 2 CFM/ft² at 0.5" w.g. (10.2L/s/m² @125Pa)

CODES: • Classified by Underwriters
Laboratories in accordance with
the requirements of:

- NFPA 90A
- UL 2518



- UL-C (Canada)
- BS 5867 Part 2, 1980
- GB8624-2006
- DIN 4102-1

DSCSS0418