

ESSENTIAL TOOLS

ADVANCED TOOLS

INDUSTRY/MODULE SPECIFIC TOOLS

Everyone with Agile PLM should have these!

Consider these if you are serious about results from Agile PLM

Tools for Specialized Situations

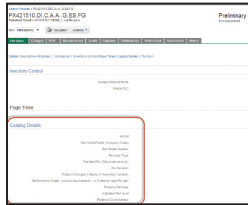
Assist+

Presents mouse-over hover (help) text for Agile objects, which include parts, documents and all types of changes for content messages for important objects and edits.



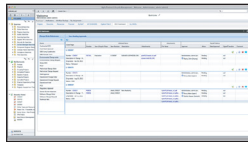
Auto Value Generator

Enables the system to automatically create things such as preformatted Descriptions, intelligent Item numbers and the next Revision on a change order.



ECO Dashboard

Provides a slick user experience for viewing engineering change data and executing approvals by decision makers.



Excel Integration

Integrate and update search, BOMs, AMLs and change creation with Microsoft Excel.



Automation Engine

Practically removes the need for Groovy scripting by supplying an Admin tool with point and click functions to create custom scripts.



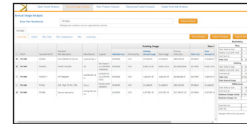
BOM Configurator

A remarkably sleek Web UI which defines rules for Variant Management as well as creates Variants using these rules.



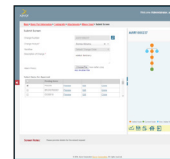
Cost Modeling Tool (CMT)

Offers a robust analysis of product costs across the product value chain. Integrates with your organization's PLM, PCM, ERP and MRP solution(s) to consolidate data across all BOMs where the part under review is used.



UI Wizard

Allows companies to guide users through a set of relevant, context specific questions while validating and automating the creation and maintenance of product records.



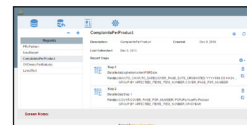
xEngine - Agile PLM to Any System Integration

Provides out-of-the-box adapters to connect Agile with ERP's such as EBS, SAP, QAD or any other system.



xReport - Reporting on Agile PLM Data

A slick tool which generates considerably complex reports without writing any code.



Corrective Action Management

This Corrective Action and Preventative Action (CAPA) tool has the ability to take enterprise Quality functions (Audit, Corrective Action, SCAR, etc.) and turn them into projects and task execution assignments so you can perform more efficiently and collaboratively.



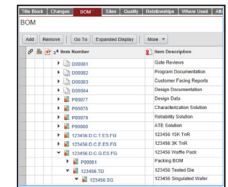
Employee Training Records (ETR)

A set of automations and reports which allows for the tracking of training records and plans for all employees in the organization. Human Resources or Managers can define a role hierarchy that includes the Documents, Standard Operating Procedures (SOP) and Work Instructions (WI) that anyone assigned to that role must be trained to.



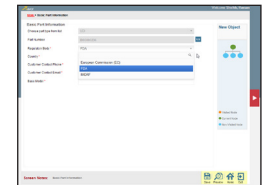
New Product Development (NPD) Manager

Enhances Program Manager and Product/Design Engineer experience by automating the steps involved with building an NPD project plan, BOM structure from various templates and creating the relationships between tasks and document and part deliverables.



UDI Solution

Enables Medical Device companies to accelerate their product cycles by reducing the time needed to manage certain information sent to the FDA's Global Unique Device Identification Database (GUDID).



Contact Xavor today for pricing options.

