

## SOLIDWORKS World 2018 “Shop Floor” Implementing Model Based Engineering with SOLIDWORKS

At SOLIDWORKS World 2018, SOLIDWORKS is turning the spotlight on manufacturing. They will be featuring a 40 x 70 ft. “Shop Floor” at booth 133, recreating a typical manufacturing environment for the production and inspection of an automotive gear shift arm.

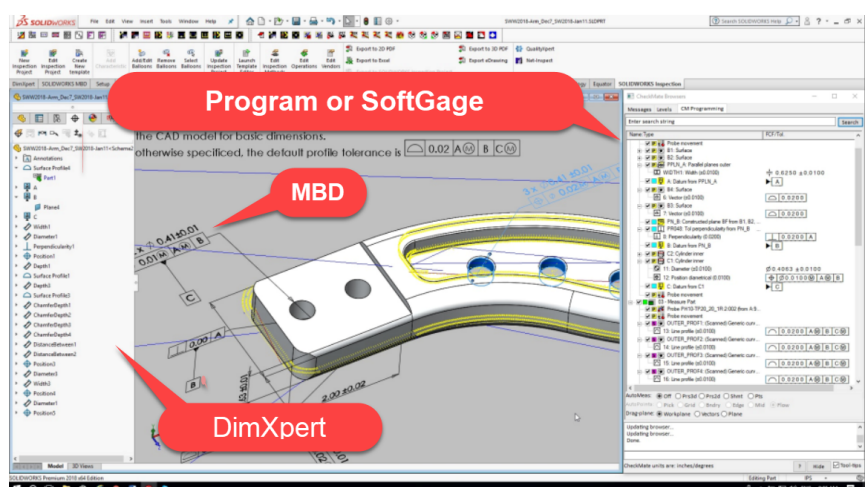
Parts will be manufactured and inspected from part designs produced in SOLIDWORKS 2018 complete with embedded Model Based Definition (MBD). This will illustrate the benefit of the Digital Thread concept of re-use, re-purpose and trace-ability of the design intent using SOLIDWORKS 2018.

Origin International Inc. is pleased to be participating in the Inspection portion of the Shop Floor activity featuring its flagship product [CheckMate for SOLIDWORKS](#). The Model Based Enterprise concept of SOLIDWORKS further enhanced in the 2018 version will be in full display, bringing the virtual world of design to reality, taking the design intent and inspecting parts manufactured on the floor with technologies and methods used by leading manufacturers today.

Partnering with Origin will be Wenzel America who will be inspecting parts on one of their Coordinate Measuring Machines and 3D Infotech who will be inspecting parts using laser scanner mounted on a robotic arm.

With the Model Based Definition embedded in the model as a starting point, inspection programs for execution on a coordinate measuring machine and a soft gauge used to evaluate point cloud information generated with a laser scanner are generated.

Solutions for “what-if” problem solving of dimensional problems with tools in SOLIDWORKS enables design and manufacturing engineers to reduce the iterations required for part acceptance, producing better parts faster



CheckMate programs used to drive coordinate measuring machines and as soft gauges for use with point cloud data from laser scanners are generated using MBD pulled from the DimXpert tree

## Implementing Model Based Engineering with SOLIDWORKS, cont'd

### Wenzel America Ltd.

Representatives from Wenzel America will be on hand inspecting parts produced on the “Shop Floor”, with a coordinate measuring machine and answering any questions you may have regarding their products and the inspection process on the “Shop Floor”.

Wenzel is an innovative and flexible solver of customer problems built on a solid foundation of family, German precision engineering, flexibility and strong partnerships.



### 3D Infotech

Representatives from 3D Infotech will demonstrate the use of a robot and laser scanning to inspect parts manufactured on the floor, and answer any questions you may have regarding their products and the inspection process on the “Shop Floor”.

3D Infotech specializes in providing solutions for the 3D metrology industry, helping manufacturing companies by providing best-in-class technology, training and support.



### Inspection Technologies Inc.

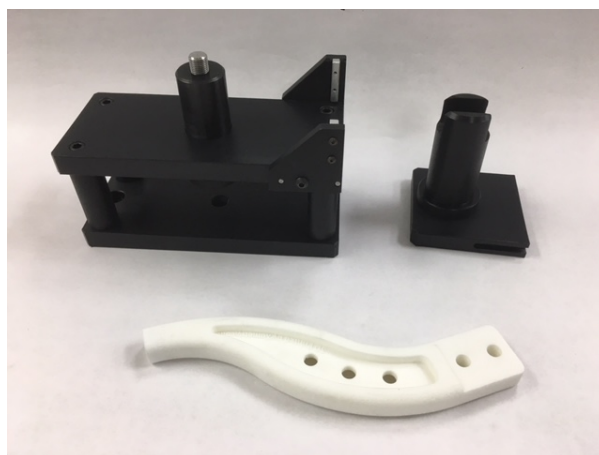
The holding Fixtures for both the coordinate measuring machine and the laser scanning equipment were provided by Inspection Technologies Inc.

Serving the world with their Advanced Metrology Services.

### Xometry

Prototype parts were printed by Xometry.

One-Stop Shop for manufacturing on Demand.



We look forward to seeing you on the “**Shop Floor**” (booth 133) at SWW2018 and discussing how you could benefit by implementing CheckMate and to see first hand how SOLIDWORKS and their partners are changing the face of manufacturing.