

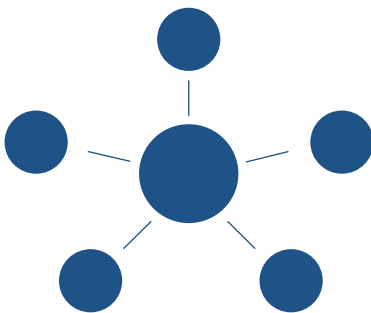


GWN.Cloud

Cloud Controller for Grandstream's GWN series

GWN.Cloud is an enterprise-grade, management platform for Grandstream access points. Thanks to streamlined monitoring and maintenance, managing your network across multiple locations has never been easier. Secure networks can be deployed in seconds, then later managed from the same interface. Keep an eye on the network's performance with real-time monitoring, alerts, statistics and reports that can be viewed using a web browser or the mobile application.

Centralized WiFi Management



GWN.Cloud offers a centralized WiFi network management platform for an entire enterprise, not just a single site.

- Complete scalability
- No limits on number of sites or APs
- Access from anywhere via web or mobile app
- Full network monitoring and reporting

Enterprise-Ready



GWN.Cloud is built to handle the requirements of major enterprises, making it a robust option for SMBs as well.

- Hosted by Amazon Web Services (AWS)
- Bank-grade TLS encryption from end-to-end
- X.509 certificate based authentication
- Resiliency from cloud disruptions

Value-Added Features

Captive Portals



Build custom landing pages to collect customer info

Real-time Monitoring



Real-time reports and status information on your APs

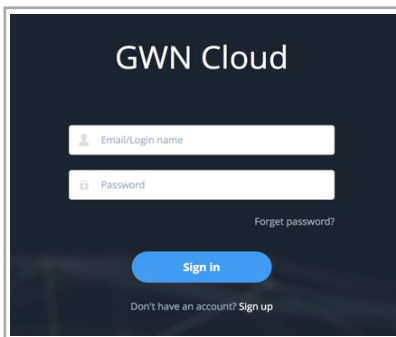
RADIUS Server



Turn-key WPA2 Enterprise support, client authentication, paid WiFi access and more
(coming soon)

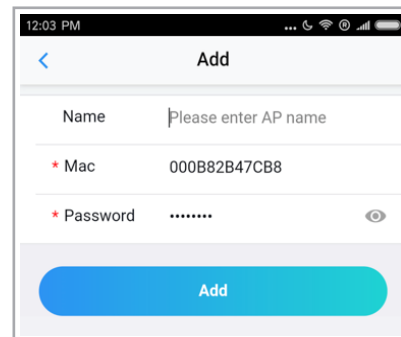
How does it work?

Step 1



Create an account on <https://gwn.cloud>

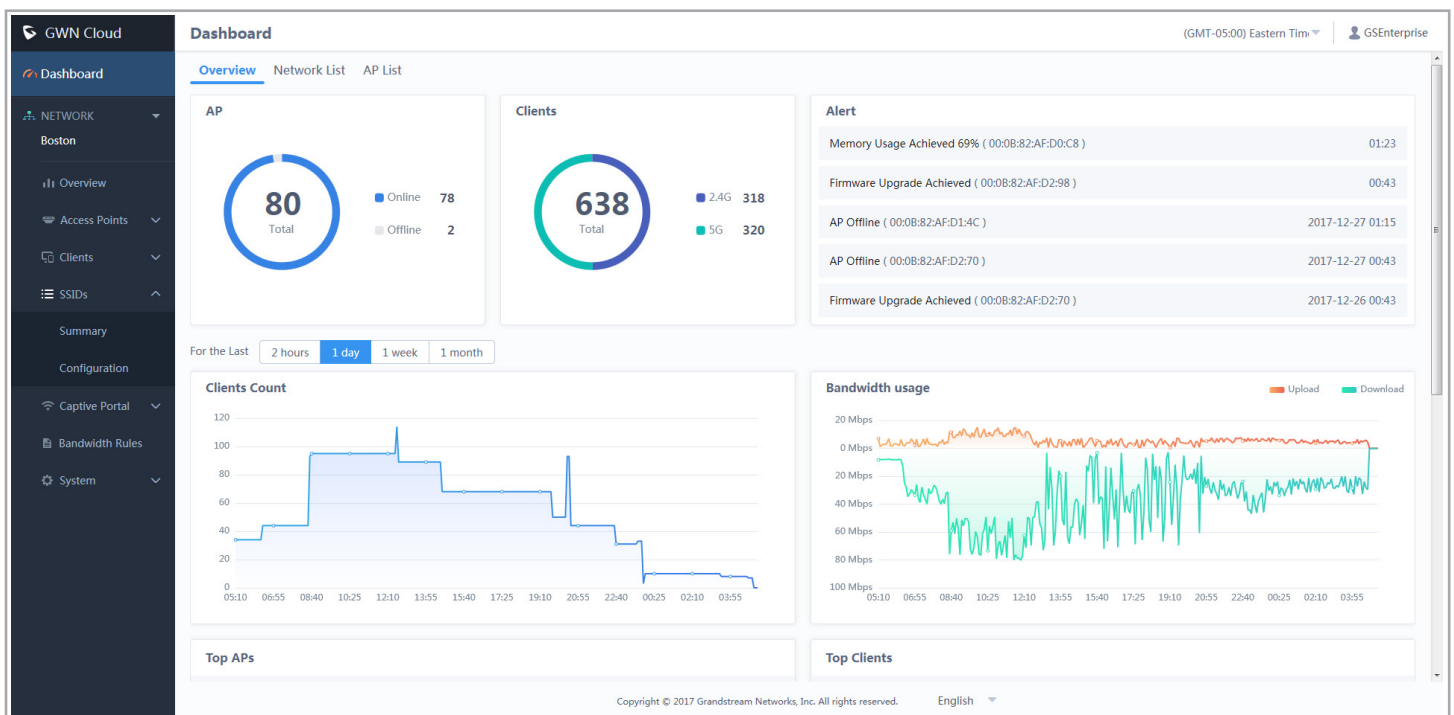
Step 2



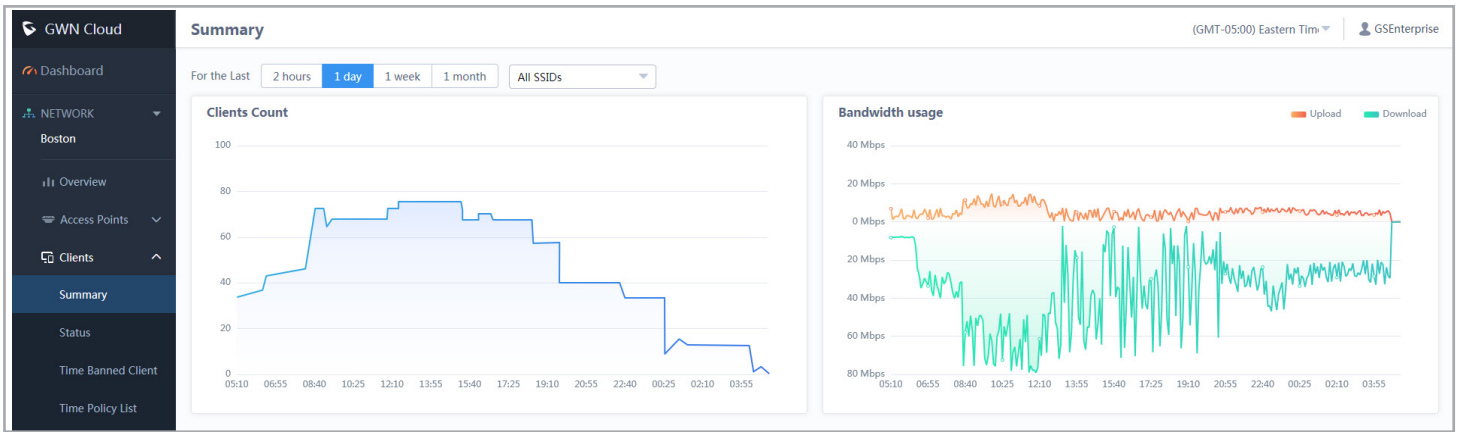
Add WiFi APs using mobile app or web UI

Seamless Access

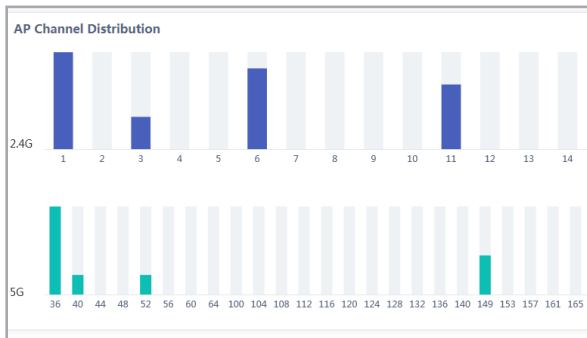
See an overview of all networks through the web user interface or mobile app



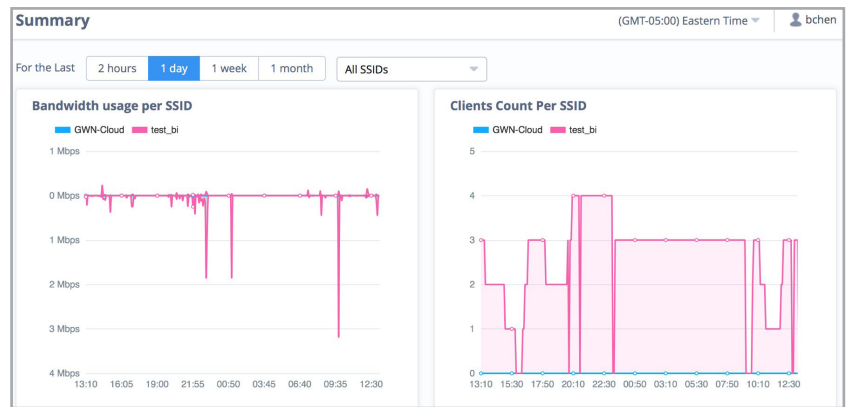
Real-Time Monitoring and Reporting



View detailed reports on each network



View detailed reports about each AP



View detailed reports about each WiFi client

Specifications

Function

- Network-based AP management
- Network/AP/client monitoring

Security and Authentication

- Supports access policy configuration (blacklist, whitelist, time policy)
- Multiple security modes including WPA, WPA2, WEP, open, etc.
- Bandwidth rules for client access
- User and privilege management
- QR code authentication

Enterprise Features

- No limits on number of sites or APs
- Hosted by AWS with 99.99% uptime
- Bank-grade TLS encryption from end-to-end
- X.509 certificate based authentication
- Supports up to 16 SSIDs per access point
- Supports Wi-Fi Alliance Voice-Enterprise
- Mobile app for iOS and Android

Supported WiFi Access Points

- GWN7610, GWN7600, GWN7600LR (FP5 Beta)

Captive Portals

- Splash page with built-in WYSIWYG editor
- Facebook, Twitter, WeChat integration
- Multiple captive portal authentications including simple password, social login authentication, RADIUS Server, etc.
- Customizable online splash pages

Reporting and Monitoring

- Real-time WiFi AP and client monitoring
- Detailed real-time reports by network, AP, client etc.
- Maintains 30 days of historical data
- No user traffic sent to the cloud
- Real-time alerts

Troubleshooting

- Ping
- Traceroute

Languages

- English, Spanish and Chinese