



businessolver®

FOUNDATION



**Creating a mentally healthy, well-educated world
where diversity, equity and inclusion matter.**

How We Help

Since 2016, we have donated more than \$1 million to charitable organizations across the United States and have logged over 6,000 volunteer hours. Whether it's promoting physical activity through a local fun run, alleviating school lunch debt, providing wildfire disaster relief or helping our clients respond to a pandemic, our Solvers always rise to the challenge to raise funds, a hammer or a sandbag.

The Businessolver Foundation's Three Pillars of Giving



**Mental
Health**



**STEM* & Career
Education**



**Diversity, Equity
& Inclusion**

**(science, technology, engineering and math)*



Mission

Positively impact the lives of our employees, clients and communities through philanthropic efforts focused on our three pillars of giving.



Vision

Create a mentally healthy, well-educated world where diversity, equity and inclusion matters.

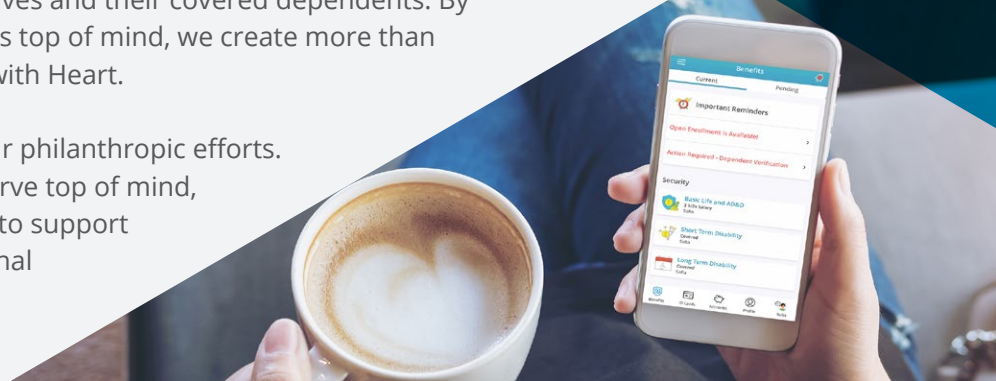
Our Why



At Businessolver, we don't just develop technology. We create Technology with Heart.

Our clients and their members rely on us to deliver the right benefits in the right place at the right time. Behind every record on our platform is a person—someone with unique needs and goals for themselves and their covered dependents. By always keeping our clients' members top of mind, we create more than technology. We create Technology with Heart.

This approach is also reflected in our philanthropic efforts. By always keeping the people we serve top of mind, the Businessolver Foundation aims to support individuals' mental health, educational aspirations and equity within their respective communities.



Three Pillars of Giving



Mental Health

Breaking down the stigmas around mental health. We practice empathy and acceptance of mental health issues in our workplace, and advocate for everyone to have access to quality mental health care, education and support.

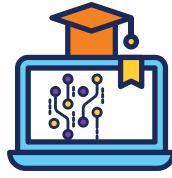
Businesssolver knows that mental health is just as important as physical health. In 2020, Businesssolver demonstrated their commitment to eliminating stigma by providing a matched donation for Make It OK. We are grateful for their support as we start conversations and increase understanding about mental illness within our communities.

– Jami Haberl, Executive Director, Healthiest State Initiative

Examples of our partners include:



NAMI, Make it OK and Make-A-Wish.



STEM & Career Education

Preparing students for a career and furthering their interest in STEM. Today's increasingly competitive world means that many young people need help preparing for a career. Businesssolver has a special interest in supporting STEM programming through innovative curricula that excite and inspire young minds.

When 80% of the nation's fastest-growing careers require skills from one or more STEM fields, it becomes even more vital that we empower students at an early age with the knowledge they need to form and fuel their future career endeavors, especially if they once seemed out-of-reach. We are delighted to work with a recognized leader like the Businesssolver Foundation to bring this engaging, interactive program to life for so many students across the country.
– Jon Chapman, Founder and President, EVERFI

Examples of our partners include:



EVERFI (a STEM career exploration program), the American Heart Association's STEM programming and Junior Achievement.



Diversity, Equity & Inclusion

Both at Businesssolver and in the world, the importance of diversity, equity and inclusion cannot be understated. We embrace the idea that a successful community is one where all people are unique and have a voice. We are inclusive in our workplace and support programs that promote activities and behaviors that make all people feel equal.

I am proud to work for a company that supports my volunteer work for Minds Matter Colorado whose mission is to help advance the educational dreams of students from low-income households. Businesssolver's commitment to diversity, equity and inclusion is in our culture and is demonstrated through the work we do in our communities to make sure everyone can succeed. **– Michael Burnell, Sr. Strategic Talent Acquisition Lead, Businessolver**

Examples of our partners include:



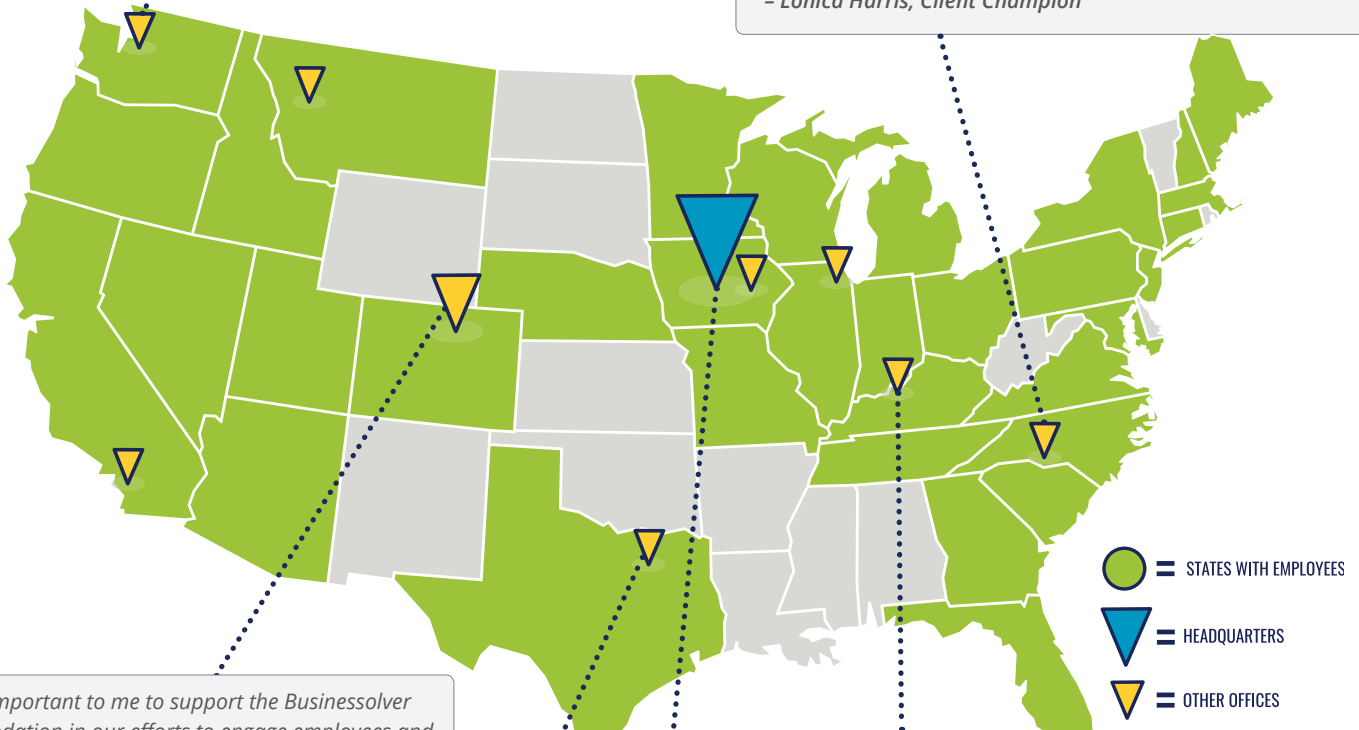
Boys & Girls Club of America, Habitat for Humanity and Big Brothers Big Sisters.



Since 2016, Solvers have logged over 6,000 volunteer hours.

The work done through the Businessolver Foundation is important because it allows us to be active members in our communities, and it gives us the opportunity to realize that service to others means creating community.
– Sony SungChu, VP Data Science and Innovation

It is incredibly important for me to support the Businessolver Foundation in as many ways as I can. We are in a place where we are fortunate enough to support others and that is truly what life is all about—giving back whenever we can.
– Lonica Harris, Client Champion



It's important to me to support the Businessolver Foundation in our efforts to engage employees and to support families and people I know personally because I can see the immediate effects of the charities we support.
– Vance Carrier, Technical Team Lead

The Businessolver Foundation is, in many ways, the heart of Businessolver. The Foundation allows us to make a difference in our communities, both through financial support and a strong commitment to volunteerism, and often in partnership with our clients. – Bruce Gillis, Compliance Lead

I love participating in activities that support the Businessolver Foundation because I know it's a true partnership between myself, my company and my community. It's always time well spent.
– Amanda James, Instructional Designer

Providing STEM programming to young people doesn't mean they'll necessarily go on to become chemists or programmers. But it does go a long way toward ensuring the next generation will have a curiosity about and a deeper respect for science and innovation. – Don McCormick, Content Marketing Lead



Learn more.

Visit Businessolver.com/Foundation to learn how we can work together to create a healthy, well-educated world where community matters.

