

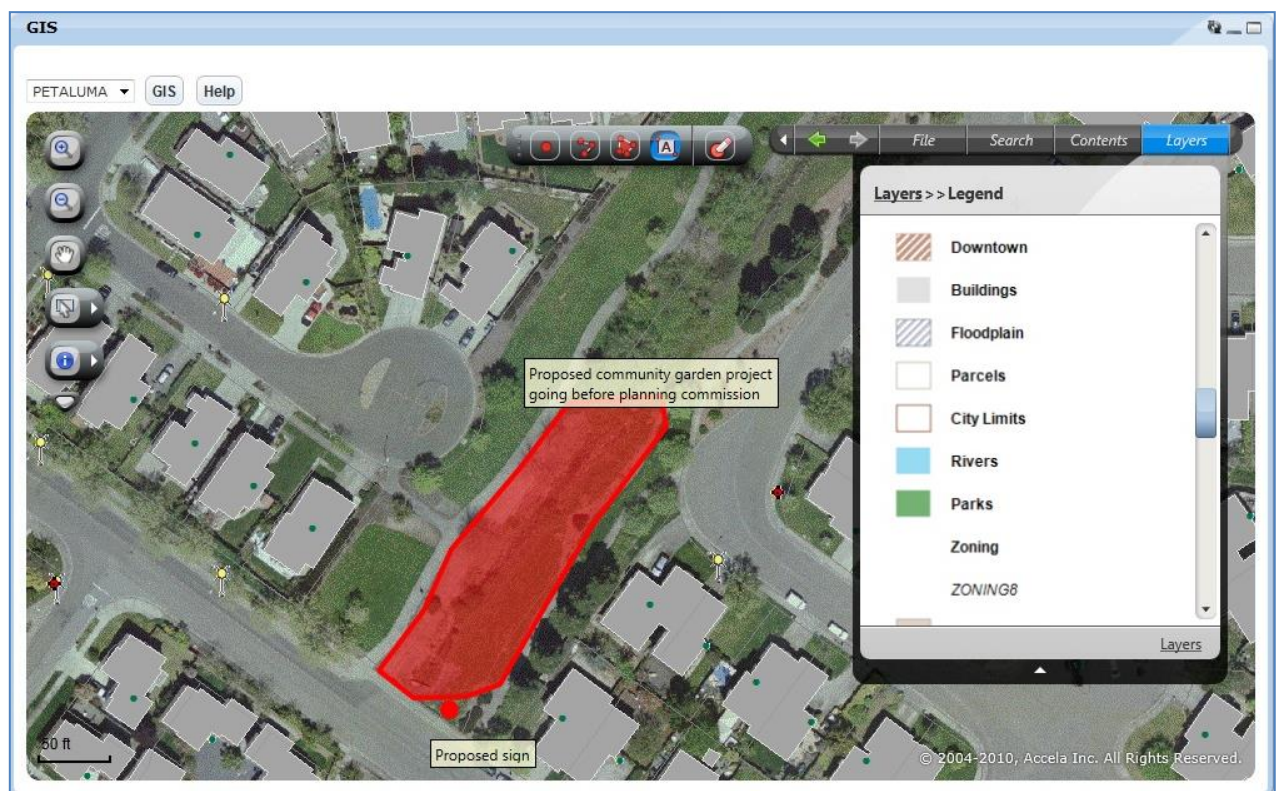
Accela GIS

Leverage Geospatial Data to Improve Decision-making

Accela GIS provides a robust solution for leveraging your agency's geospatial data to improve decision-making and streamline processes. Accela GIS provides a geographic view of all land-use, zoning, and infrastructure information associated with parcels, permits, inspections, code cases, assets, work orders, or service requests.

Benefits:

- Quickly start tasks directly from the map capturing attributes from GIS features.
- Deploy spatial data anywhere in the Accela application—behind the desk, out in the field, or over the Web for public use.
- Accela GIS supports both ArcGIS® Server and Microsoft Bing maps, providing agency staff with a rich user experience when working with the map.

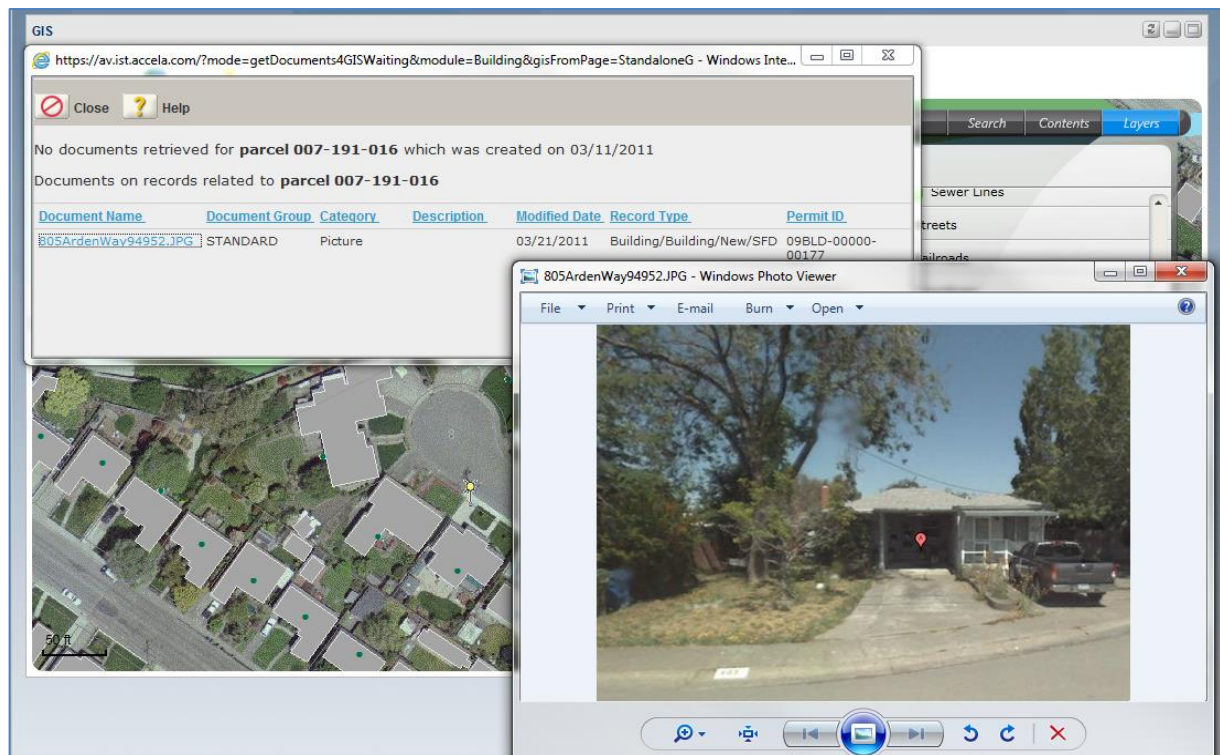


Use redline feature in the Accela GIS to represent complex geometry.



Key Features:

- Integrate seamlessly with the Civic Platform
- Automate complex and repetitive tasks
- Access multiple map services and layers
- Create custom query layers and visualize the results on the map
- Add and use new GIS features quickly
- Establish proximity alerts
- Optimize travel routes for field staff
- Perform buffer selection
- Save map views as JPG or PDF files or print to file
- Measure single and cumulative distances



Quickly start tasks directly from the map capturing attributes from GIS features

Learn more about Accela Geographic Information System and Accela Civic Solutions; visit us at www.accela.com or call 888.722.2352 ext. 5.

About Accela

Accela, Inc. provides the leading civic engagement platform, powering thousands of services and millions of transactions daily for large and small public agencies worldwide. We connect governments to people and accelerate and streamline core civic land management, licensing, asset management and public health and safety processes. Accela's Civic Cloud includes a complete platform, both packaged and custom-tailored civic business solutions and cloud-based, office, mobile and social applications to support government agency, business and citizen needs. Accela is headquartered in San Ramon, Calif., with international offices in Australia and the United Arab Emirates. For more information, visit www.accela.com.