

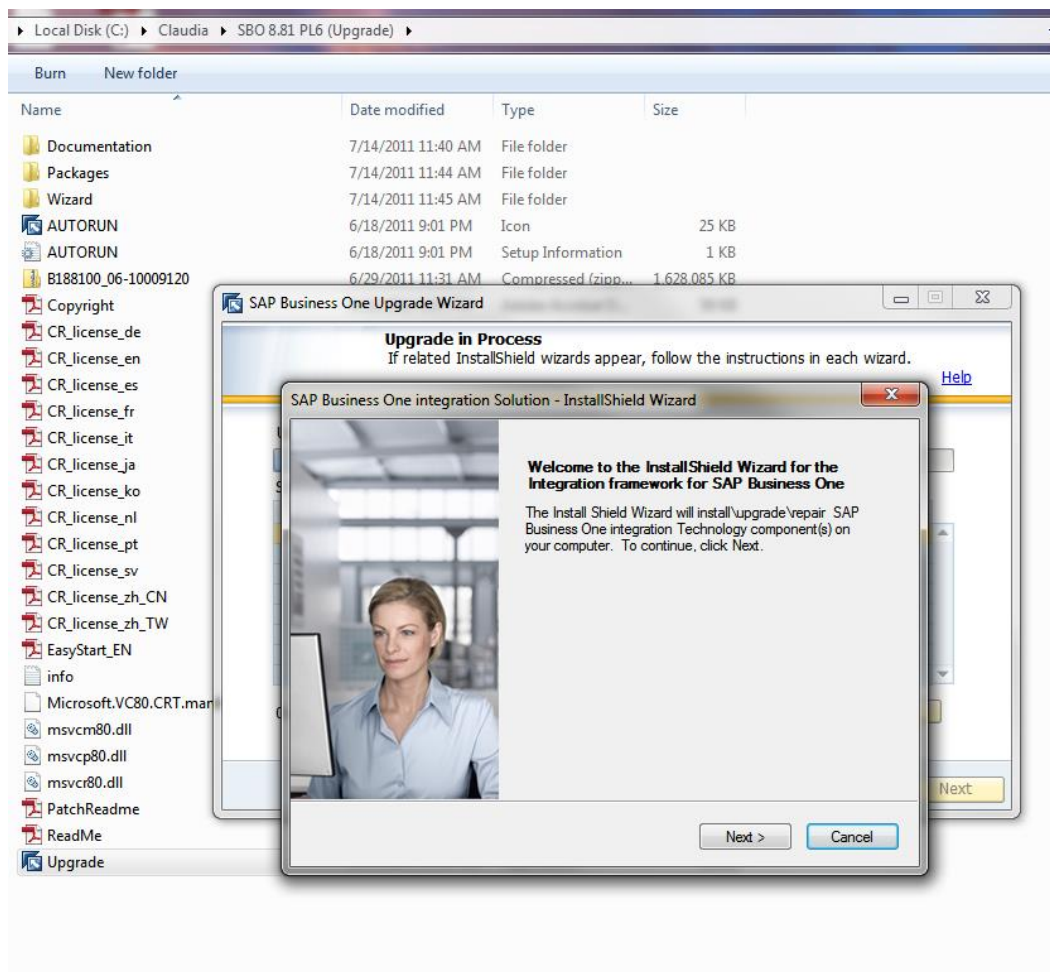
Integration Framework Installation/Setup

Best Practice: install B1if before creating DBs. Also, install Base PL and then Upgrade Integration Framework to desired PL.

Note: ports that are required by B1if:

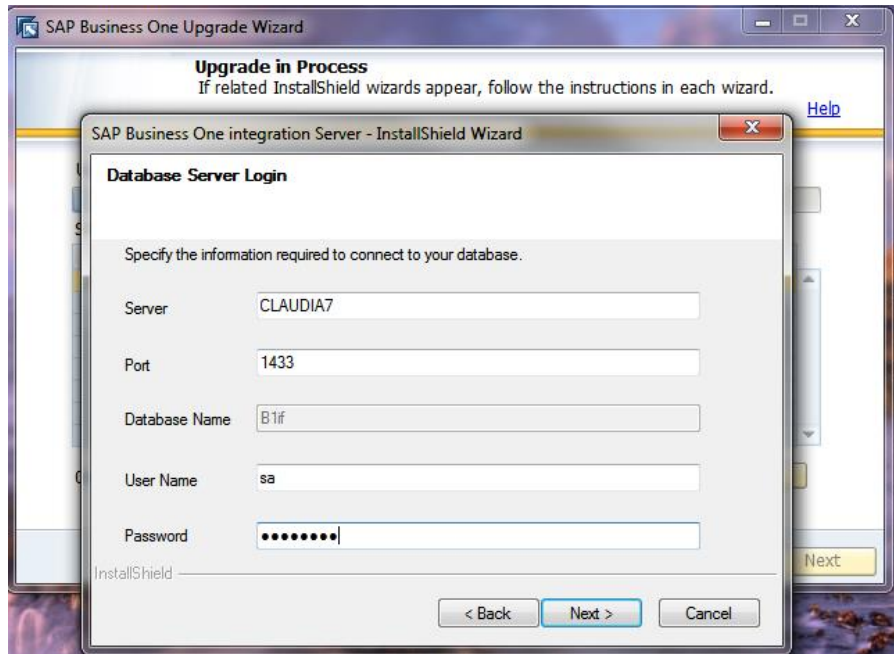
2099 (DIProxy service)
8005
8009
8080
8443

1. Go to your “Upgrade” folder for SAP Business One and run “Upgrade.”



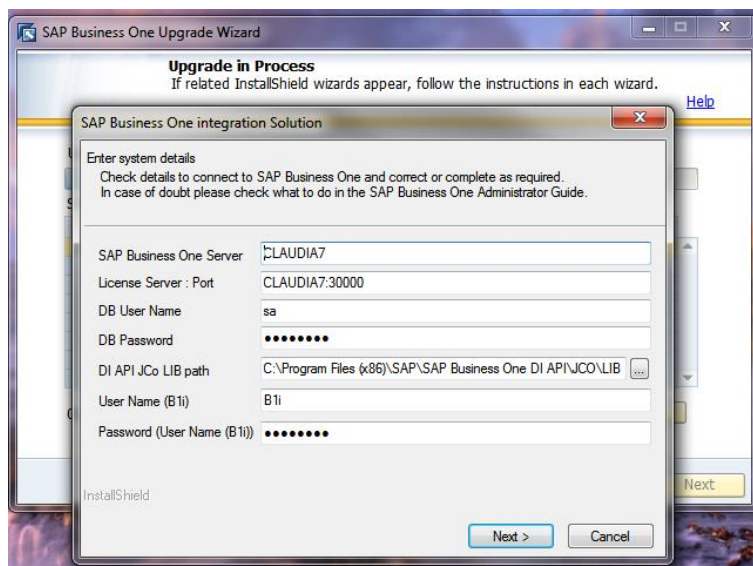
2. Select "Integration Framework" in the list of components for installation or upgrade.
3. Click "Next" in the three next dialogue boxes.
4. Dialog Box: enter username and password for B1iAdmin

Database authentication to create B1if database: PW = vision33

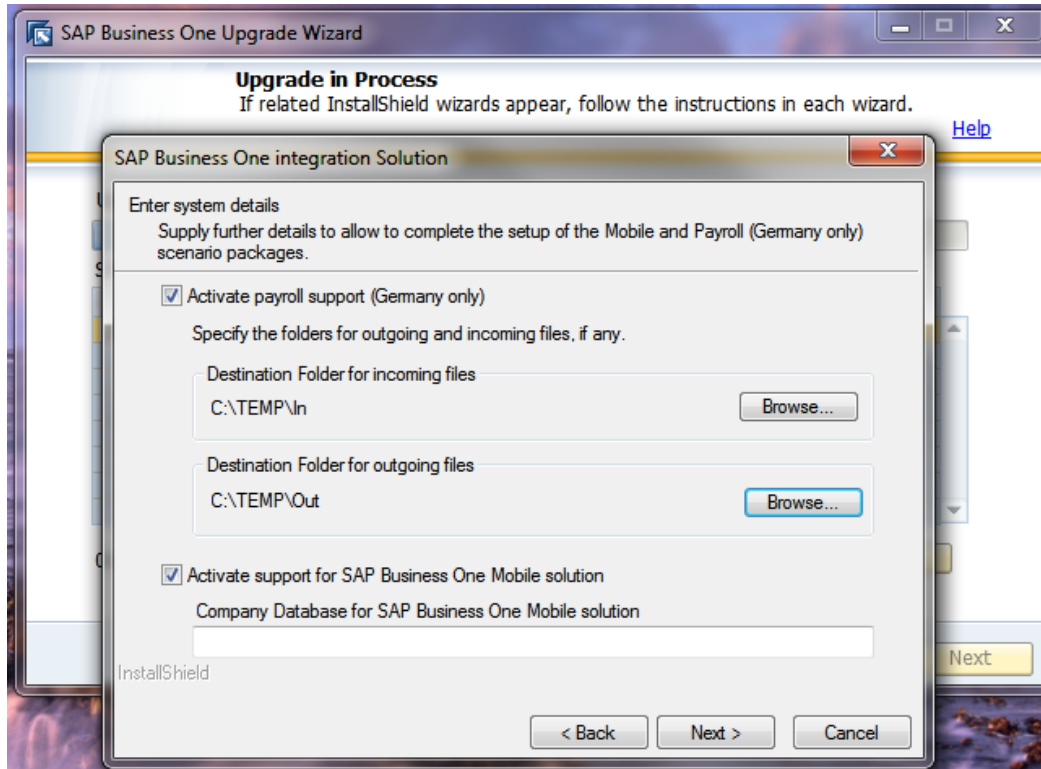


Continue with "Next"s

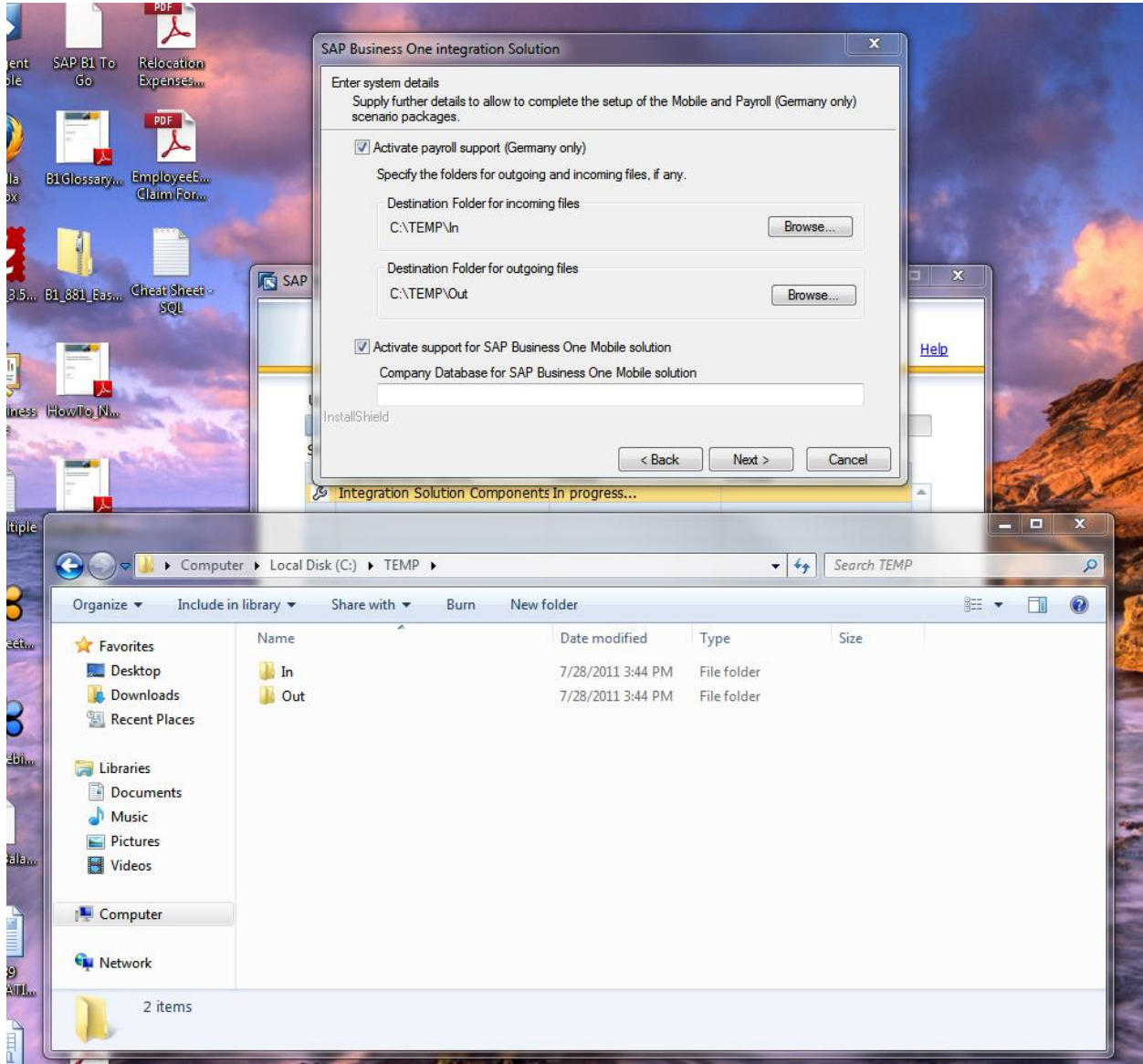
5. Information is given, just put in a password. PW: vision33.



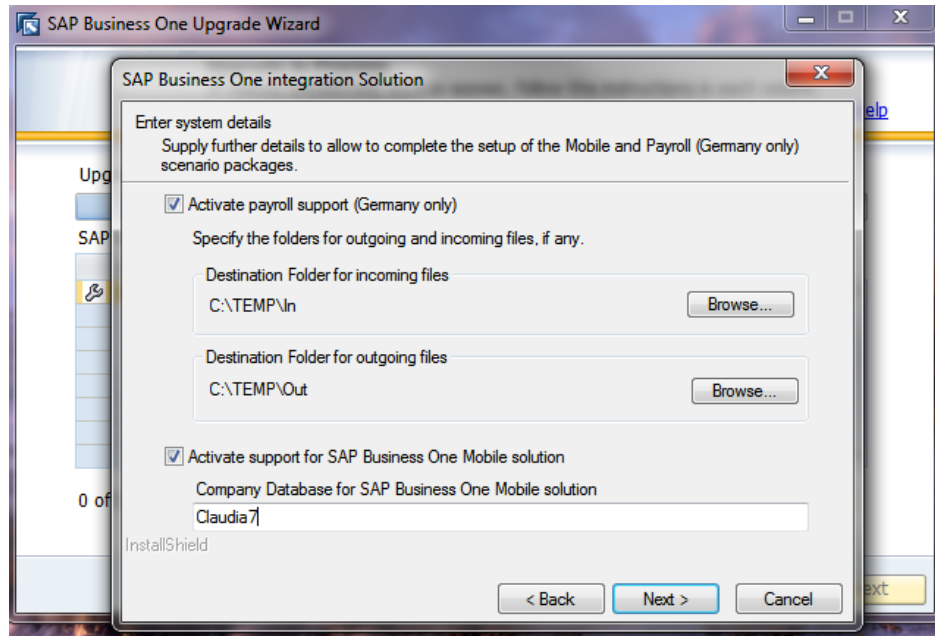
- Even though the following option applies to Germany only be sure to have a folder that follows the path given below: (create the folders under C:\; be sure to match the upper and lower case words here and along the installation process).



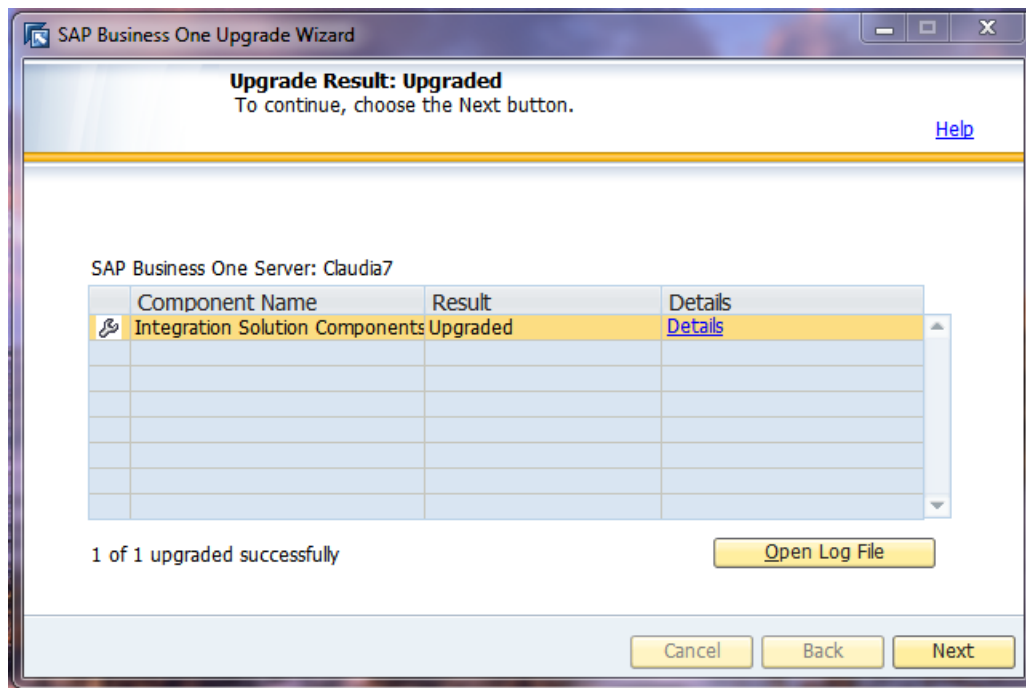
7. Create folder for paths under the C:/ drive making sure that name of folders match lower or upper case letters of folder names in path:



- When the following dialog box appears, go to management studio and look at the server name to assign to the mobile solution for iphone, ipad, etc. "Claudia7" (in this case I knew the name of my server). Click "Next."



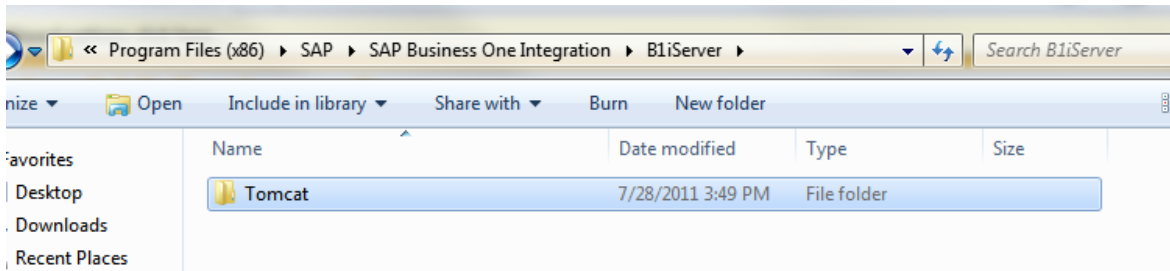
- Click Finish.



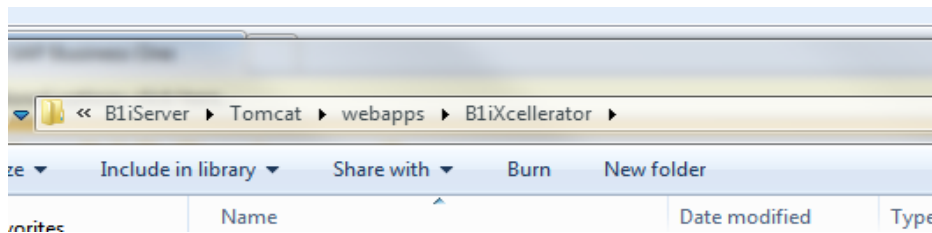
If installation was successful, you will be shown a "Congratulations" message.

To do after installation

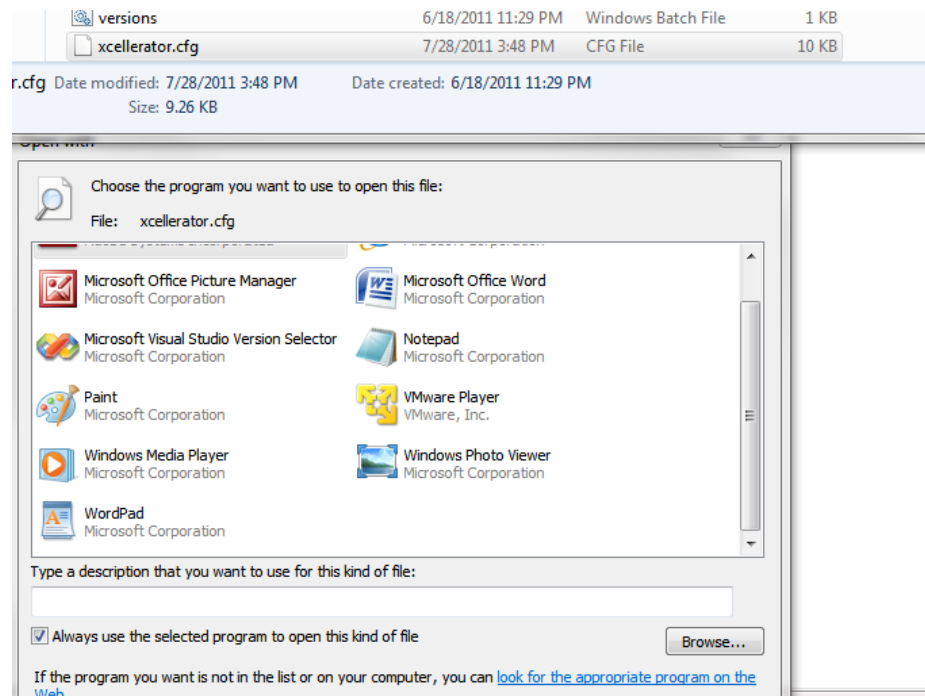
- Go to “SAP Business One Integration which should be located under your “SAP” folder.



- Select Tomcat > webapps > B1iXcellerator



- Right click on the “xcellerator.cfg” file. Open with NotePad.



Click CTRL + F to find “local”

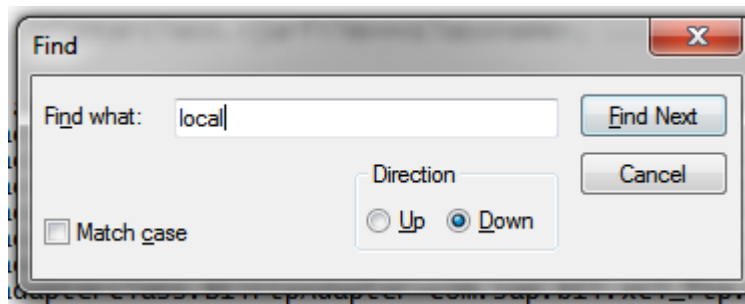
```
xcellerator - Notepad
File Edit Format View Help
[[blisetup]
#== xcellerator-Parameters: ==

# Registers one external, loadable Adapter, where the single components mean
#
# <jarfile> := the name of the Adapter's entry-jar-file w/o extension
#           (must be in the same directory as this config-file)
# <classname> := The class that implements the the part. Adapter (there might
#
# xcl.adapterclass.<jarfile>=<classname>, ...
#

#xcl.adapterclass.TestAdapter=com.inc.acme.testadapter.EntryClass
xcl.adapterclass.BliDiaAdapter=com.sap.bli.adapter.dia.DiaAdapter
xcl.adapterclass.BliRFCAdapter=com.sap.bli.adapter.rfcp.RFCAdapter
xcl.adapterclass.BliRFCAdapter=com.sap.bli.adapter.rfca.RFCAAdapter
xcl.adapterclass.BliFileAdapter=com.sap.bli.xcl_file.FileIAdapter,com.sap.bli
xcl.adapterclass.BliMailAdapter=com.sap.bli.adapter.mail.MailAdapter
xcl.adapterclass.BliJdbcAdapter=com.sap.bli.adapter.jdbc.JdbcAdapter
xcl.adapterclass.BliFtpAdapter=com.sap.bli.xcl_ftp.FTPIAdapter,com.sap.bli.xc
xcl.adapterclass.BliMairAdapter=com.sap.bli.xcl_mair.MairAdapter
xcl.adapterclass.BliSmtAdapter=com.sap.bli.adapter.smtp.SmtAdapter

# The max. count of internal worker-threads afforded for the internal schedul
# The value of 0 means that there is no limit (what in general should not be
# A negative value means the count of threads per available processor
xcl.threads=-1

# The max. count of retries to connect to the RDBMS on startup. After a faile
```



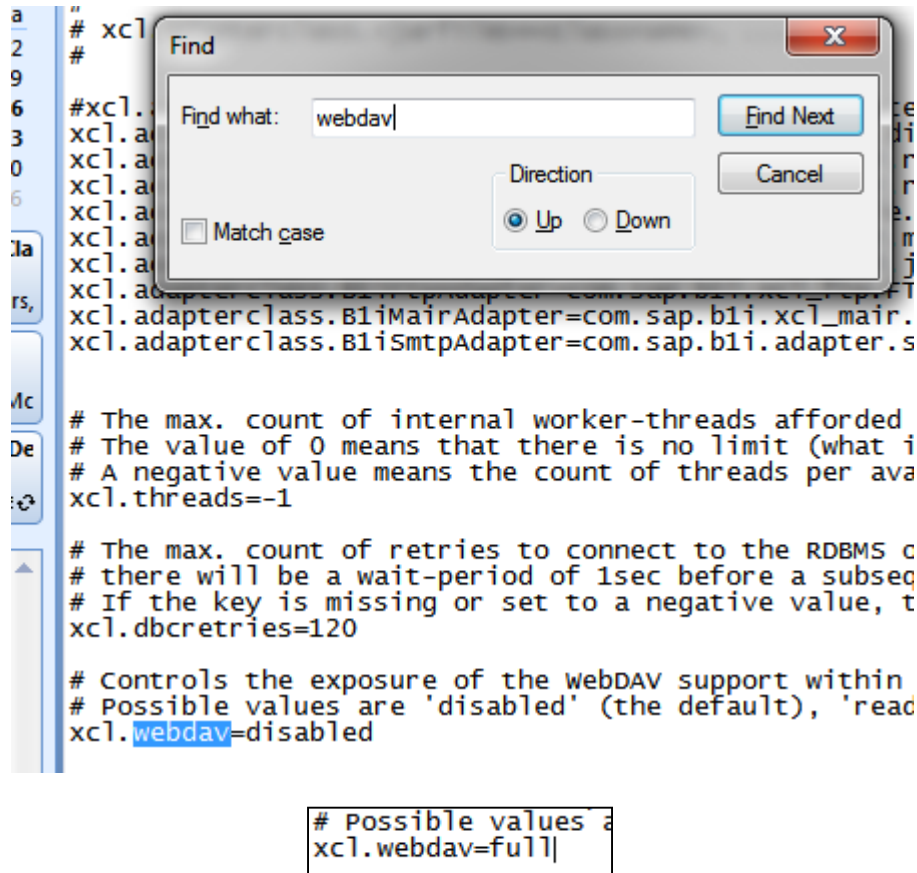
- Find: xcl.http.localonly=true. Change "true" to "false."

```
# If not specified or set
# If specified and set to
# The name-spaces 'ipo' ar
xcl.http.localonly=true
```

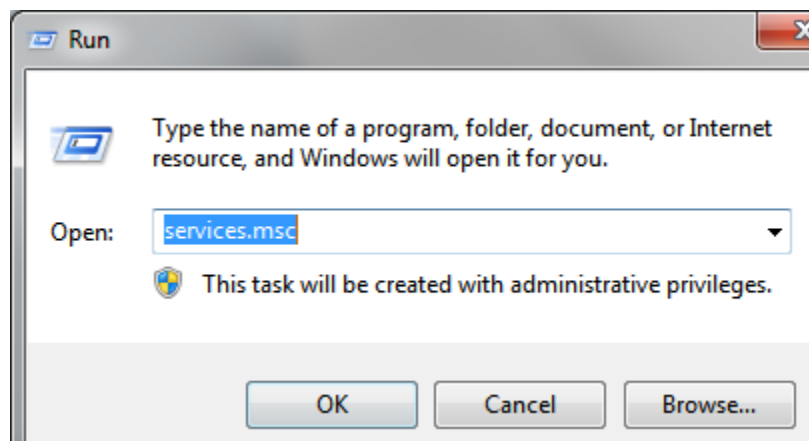
- As shown below:

```
# The name-spaces 'ipo' and
xcl.http.localonly=false
```

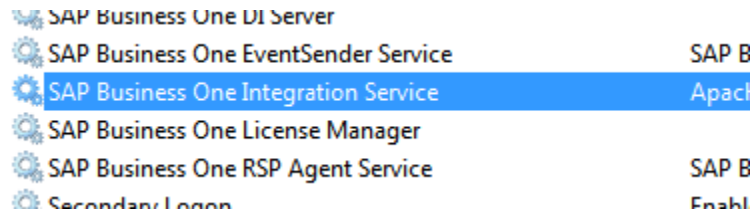
- Find “webdav.” Change from “disabled” to “full.” As shown below:



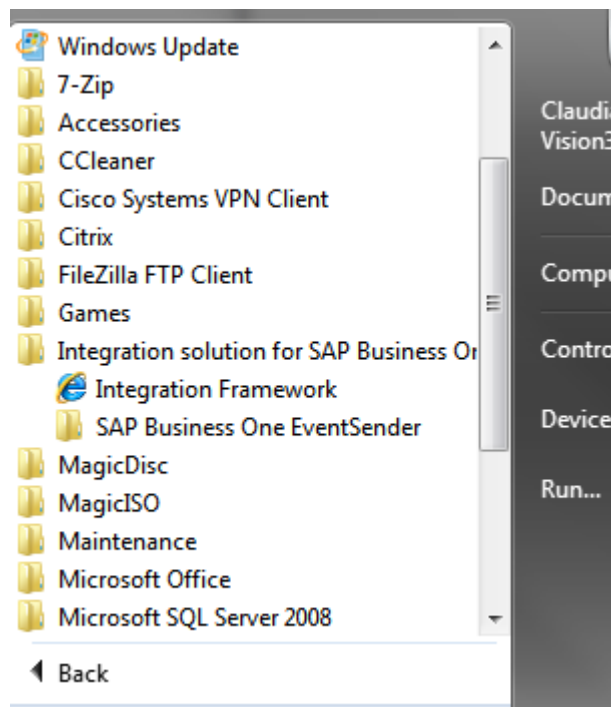
- Save document.
- Go to “Start” and type “services.msc”

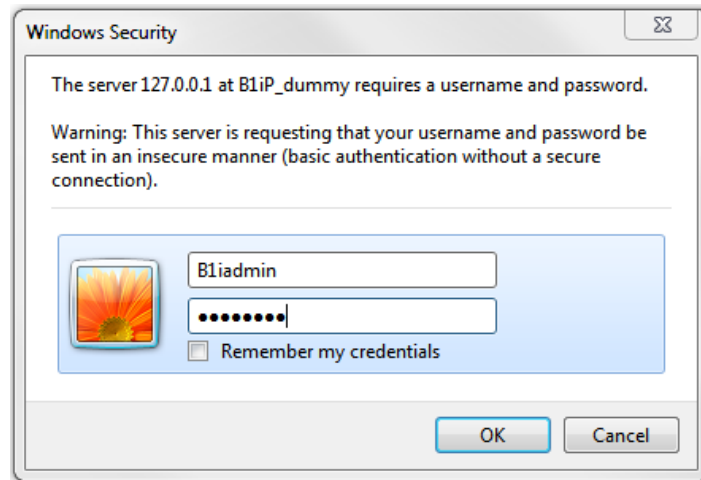


- In the window that opens select “SAP Business One Integration Service.” Right click it and select “Restart.”

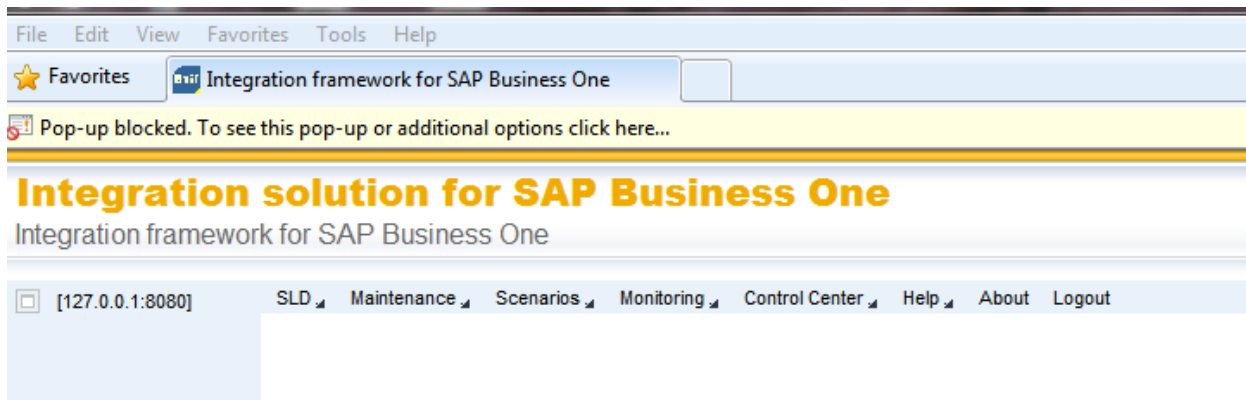


- Go to “START,” “ALL PROGRAMS”. Click on “Integration Solution for SAP business One”. Click on “Integration Framework.” Following dialog box appears. Insert credentials for B1i.

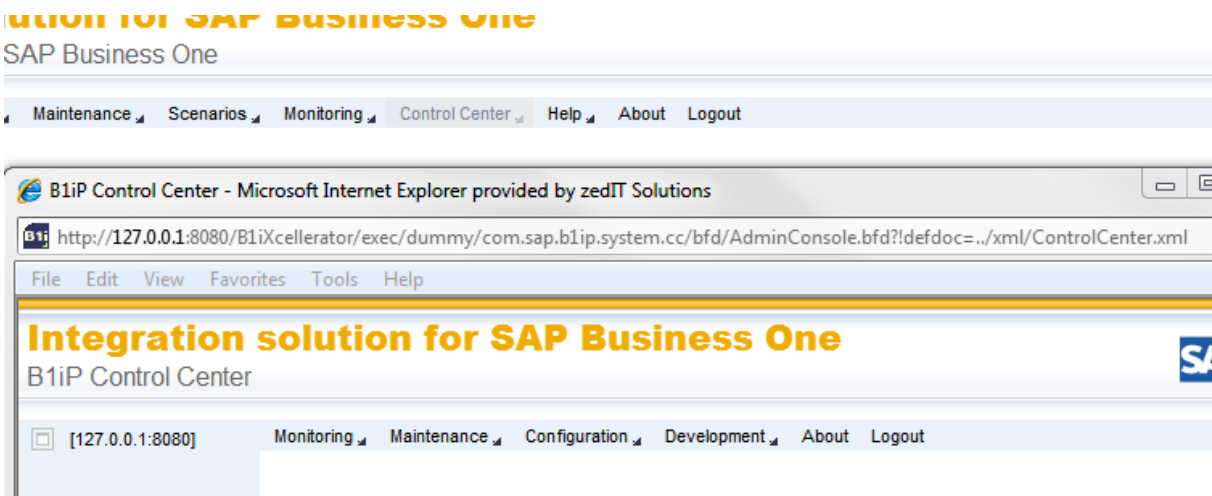




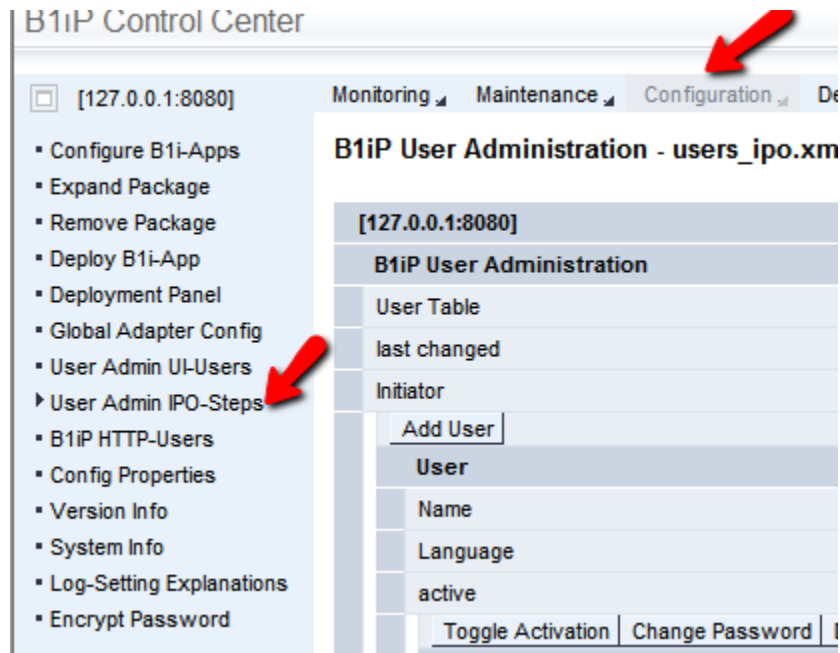
- Click "OK" and following window opens.



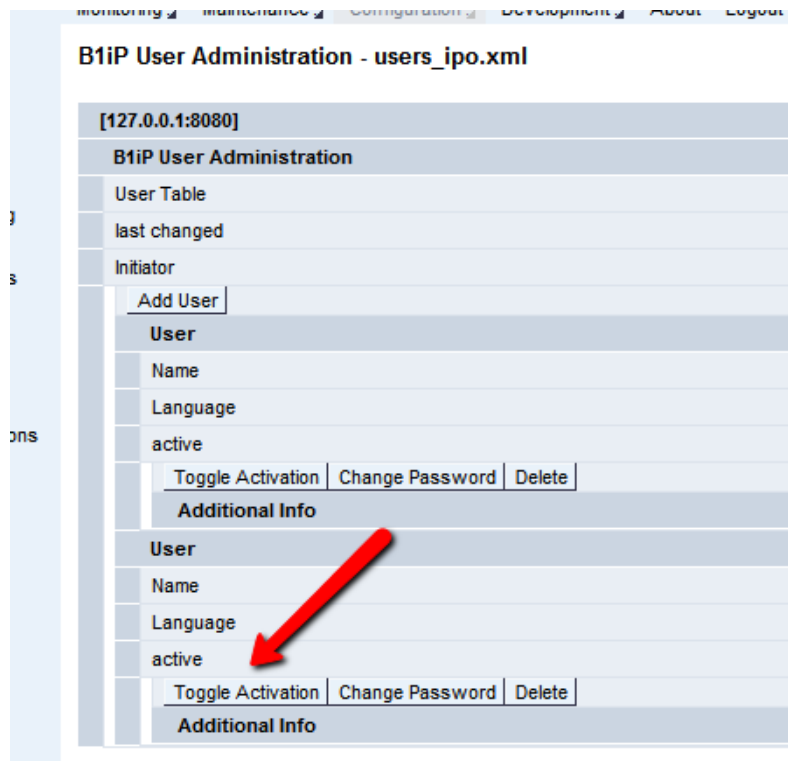
- Click on Control Center:



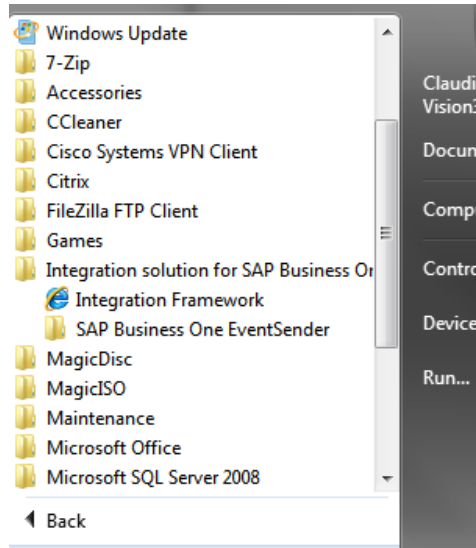
- Click on "Configuration"> User Admin IPO-Steps



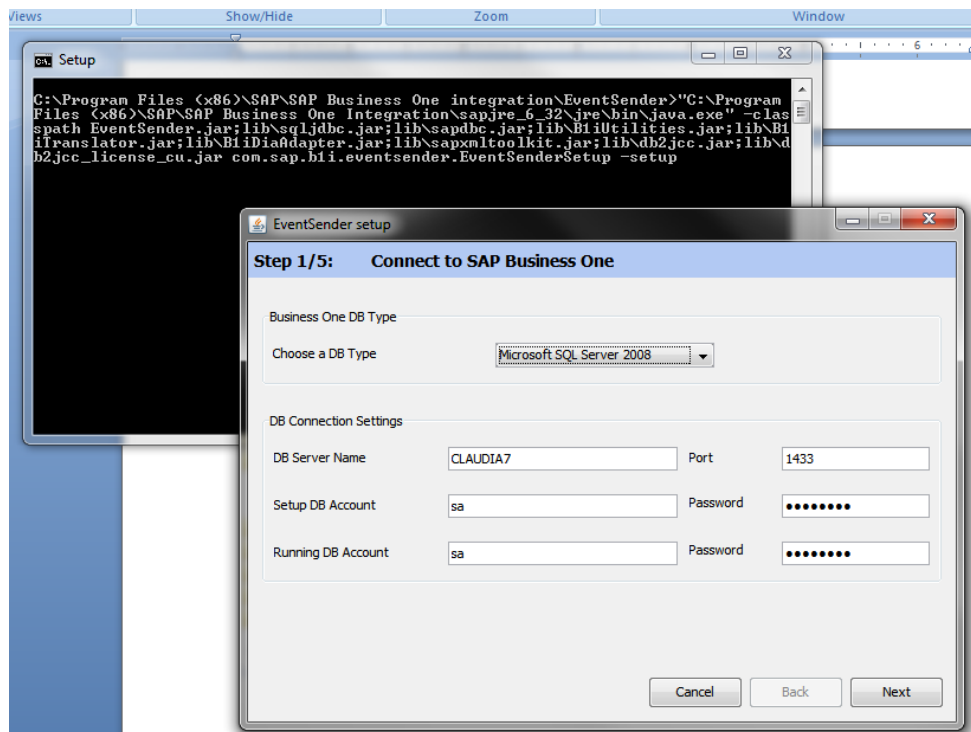
- Click on "Toggle Activation" button shown below so that **B1Admin** and **B1iPeer** are both set to active = True



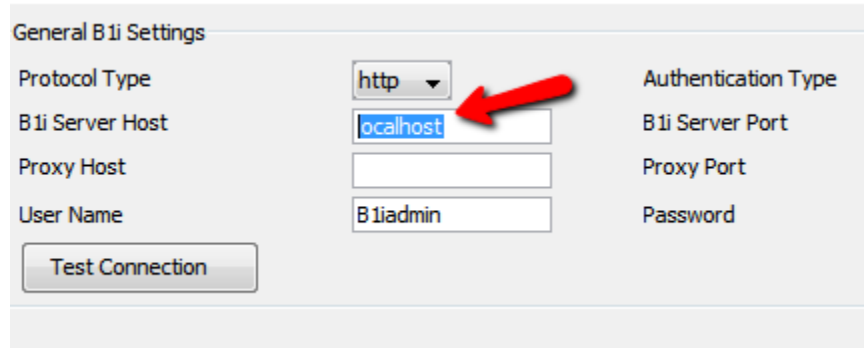
- Click "OK"
- Go to "START," "ALL PROGRAMS". Click on "Integration Solution for SAP business One". Click on "SAP Business One EventSender"



- Click on "Setup." Insert credentials.



- Click “Next” and “Next”

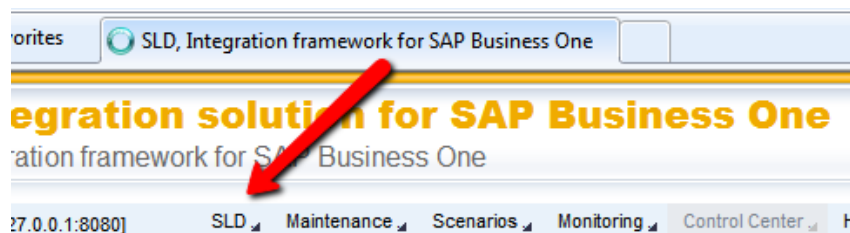


General B1i Settings

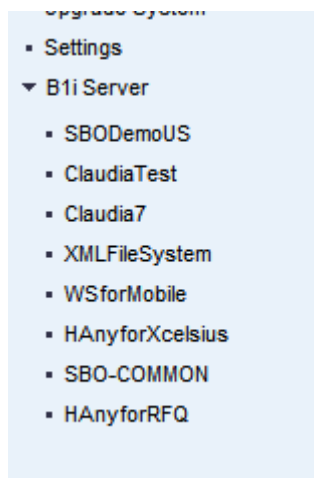
Protocol Type	http	Authentication Type
B1i Server Host	localhost	B1i Server Port
Proxy Host		Proxy Port
User Name	B1iadmin	Password

Test Connection

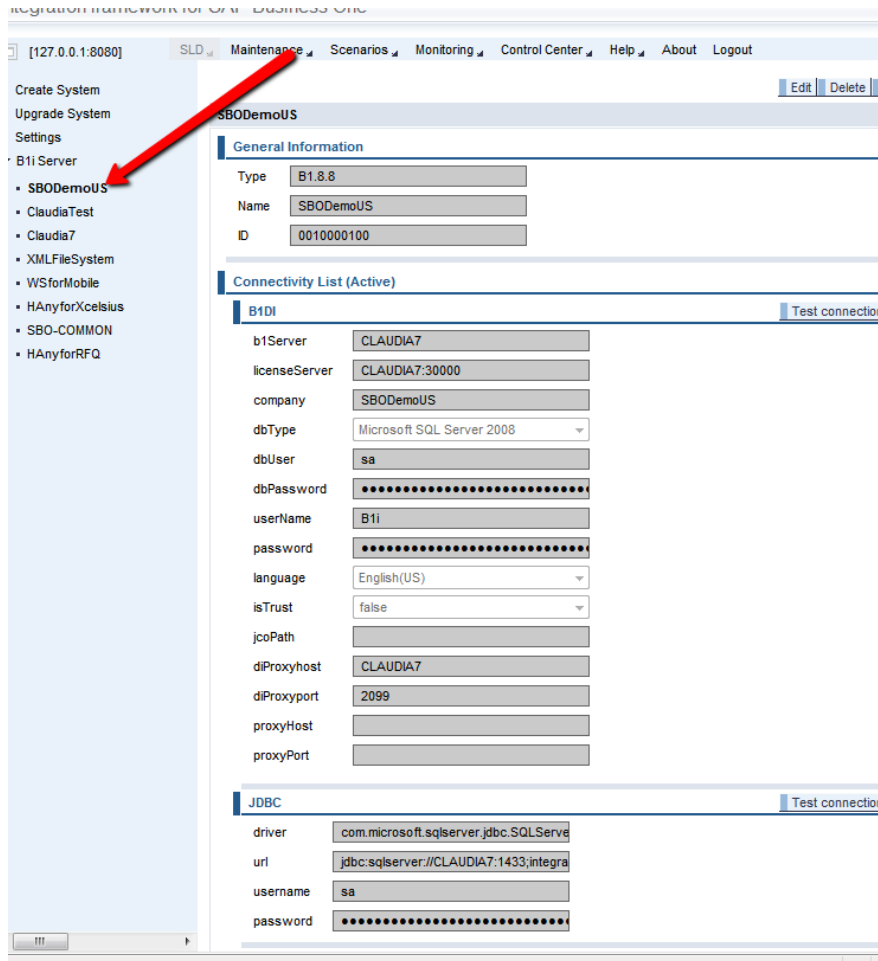
- Change **local host** to **B1serverhost (in my case Claudia7)**
- Click “Next” and make sure all checkboxes are checked. Click Next and Finish. Test the databases connection.
- Go back to Internet window for Integration Solution and click on “SLD”



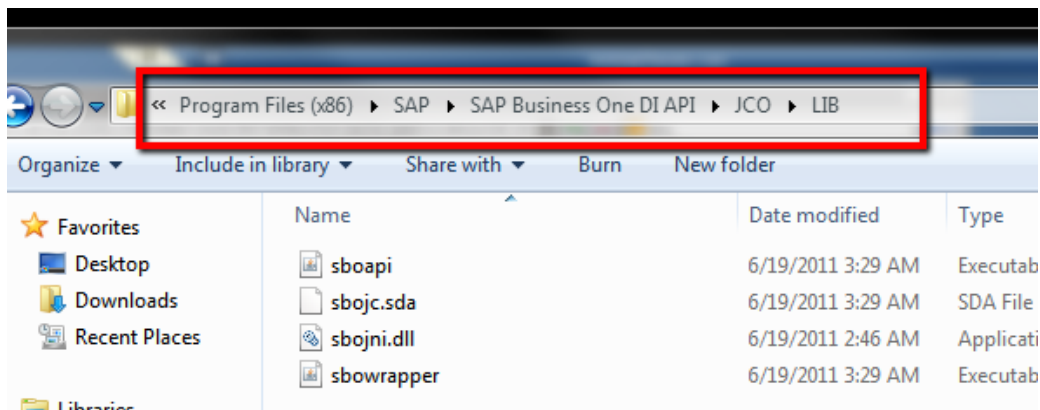
- You should have all companies at your left:



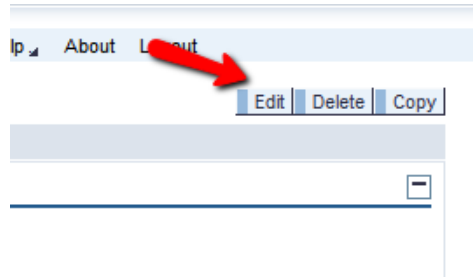
- In case you do not see DBs above, please refer to the troubleshooting guide located at the end of this document.
- Click on one of the companies and do the same for all companies:



- Go to START > COMPUTER > PROGRAM FILES (X86) > SAP > SAP BUSINESS ONE DI API > JCO > LIB. Copy the path.



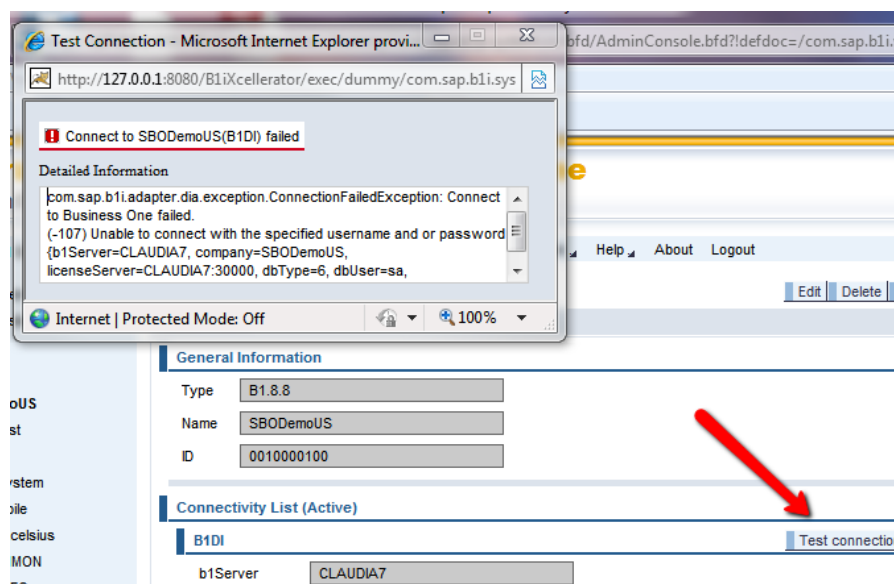
- Select Edit in the “Integration solution for SAP Business One” window.



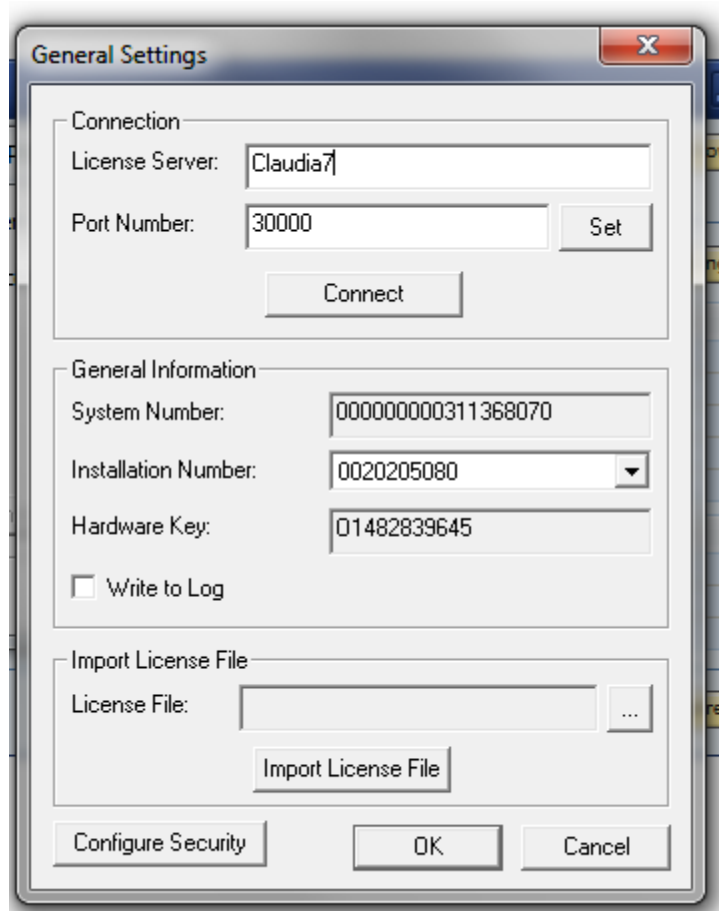
- Paste path on the “jcoPath” box in the Integration solution for SAP Business One window and click “SAVE” (upper right corner of the company details area).

dbPassword
userName	B1i
password
language	English(US)
isTrust	false
jcoPath	\\SAP\SAP Business One DI API\CO\LIB
diProxyhost	CLAUDIA7
diProxyport	2099

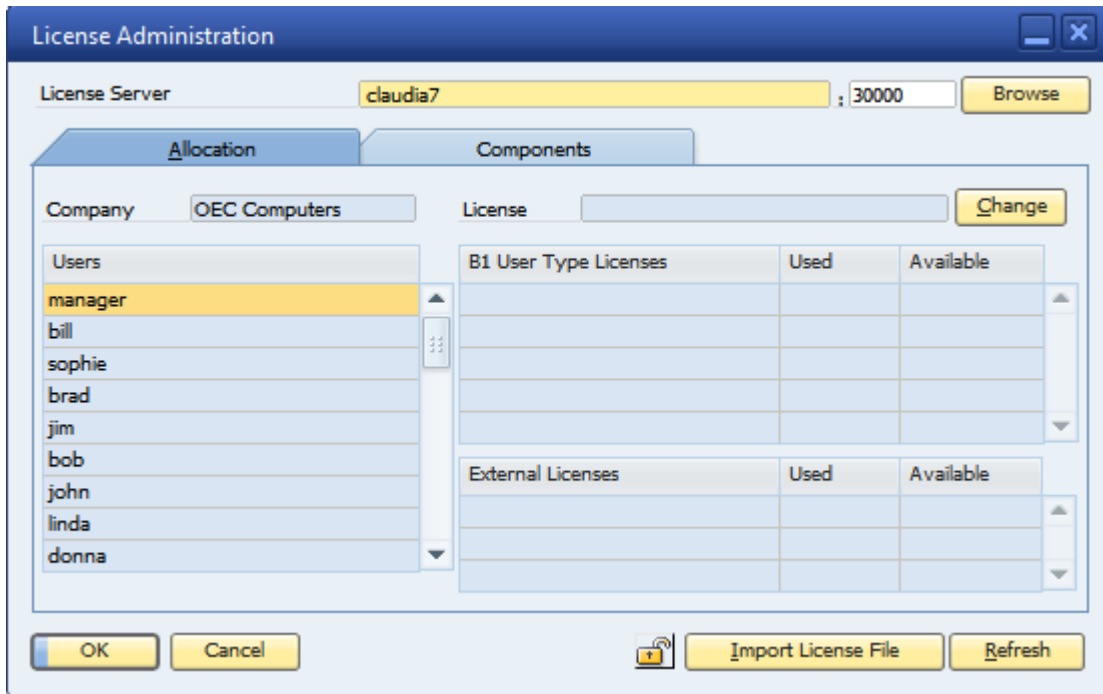
- Click on Test Connection for that area and you are more likely to get the following dialogue box.



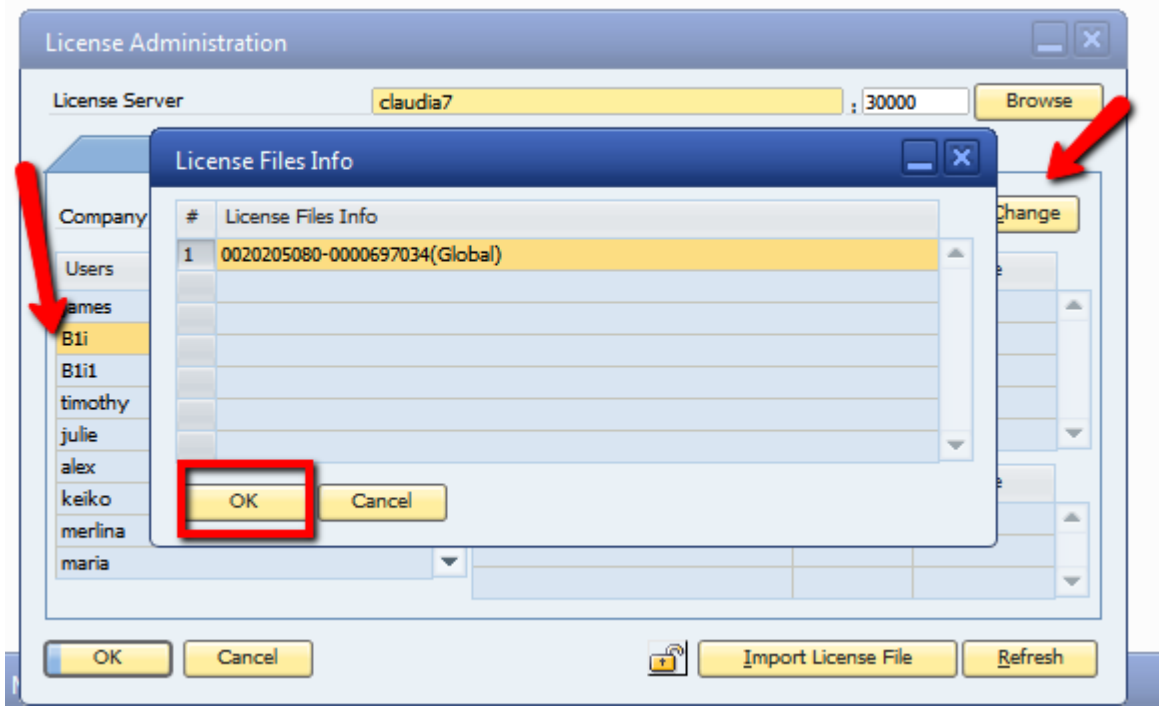
- In my case, Change from License Server “localhost” to “Claudia7” (name of the server).
- My license server was done so I had to import license file again and restart License Manager.



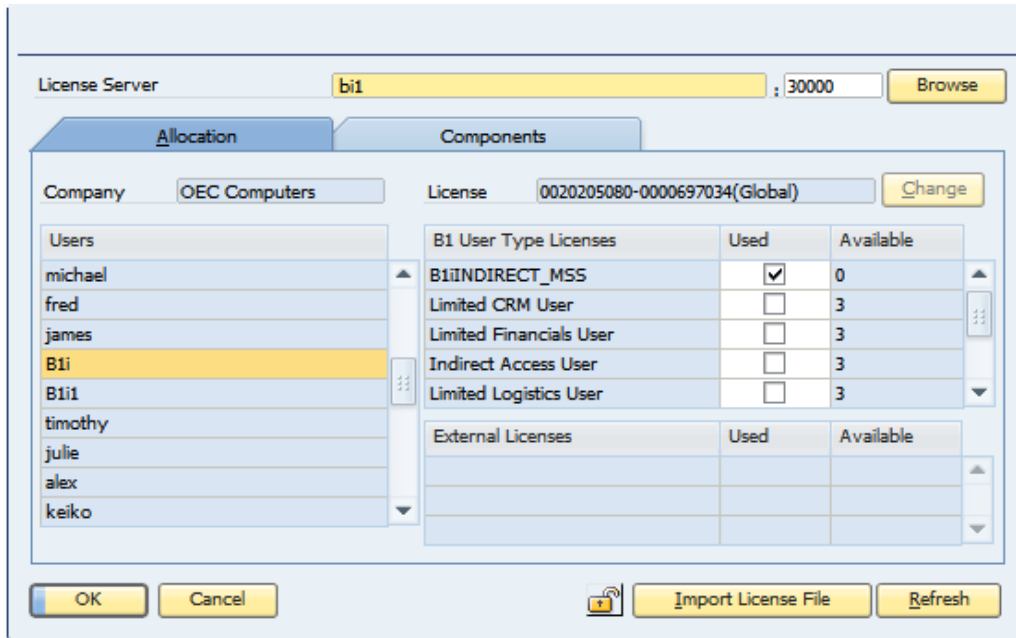
- Open SAP. Go to “Administration” > License > License Administration. Look for “B1i” user and click “Change”



- Select the License and click “OK.”

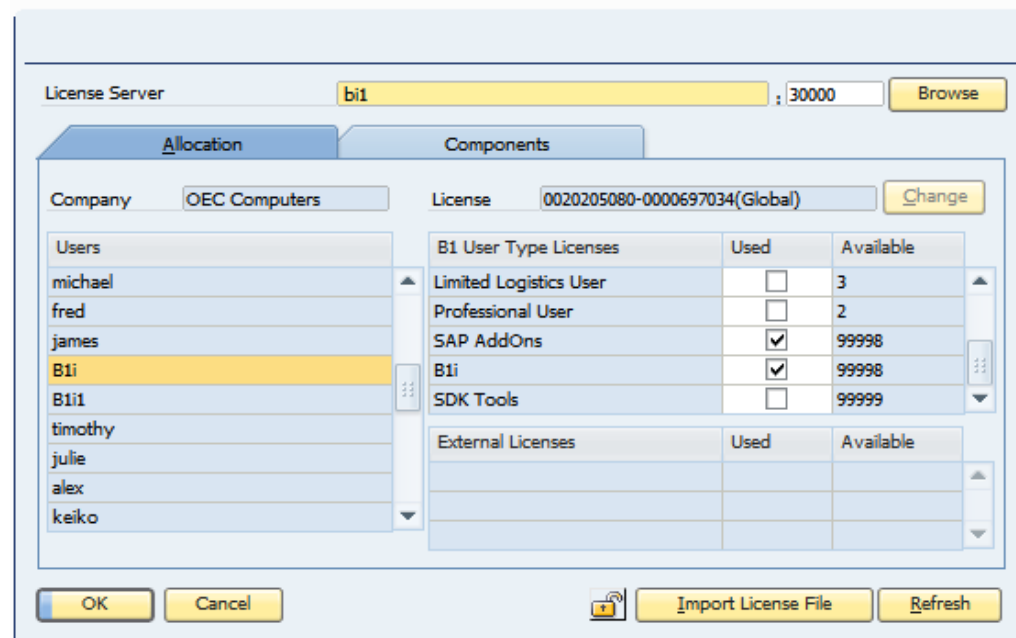


- Check the following boxes:



B1 User Type Licenses	Used	Available
B1iINDIRECT_MSS	<input checked="" type="checkbox"/>	0
Limited CRM User	<input type="checkbox"/>	3
Limited Financials User	<input type="checkbox"/>	3
Indirect Access User	<input type="checkbox"/>	3
Limited Logistics User	<input type="checkbox"/>	3

External Licenses table is empty.

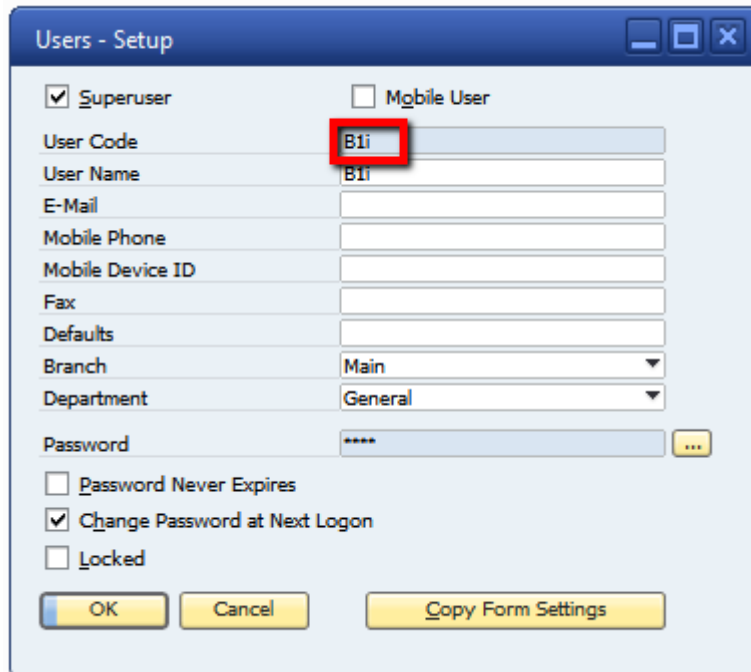


B1 User Type Licenses	Used	Available
Limited Logistics User	<input type="checkbox"/>	3
Professional User	<input type="checkbox"/>	2
SAP AddOns	<input checked="" type="checkbox"/>	99998
B1i	<input checked="" type="checkbox"/>	99998
SDK Tools	<input type="checkbox"/>	99999

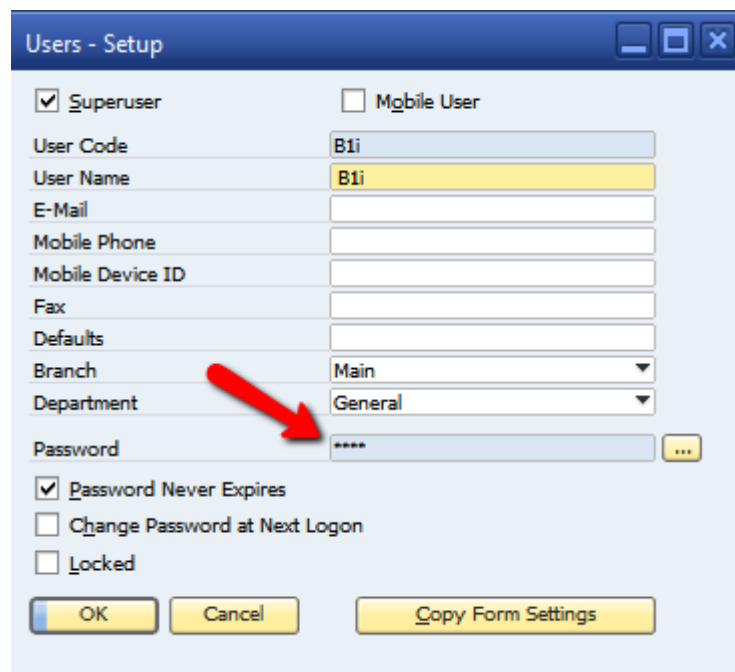
External Licenses table is empty.

- Click "OK."

- Close and reopen SAP, log on to the company that you are making changes to in the “integration solution for SAP Business One” window. Go to Administration > Setup > General > Users and Find the user “B1i.”



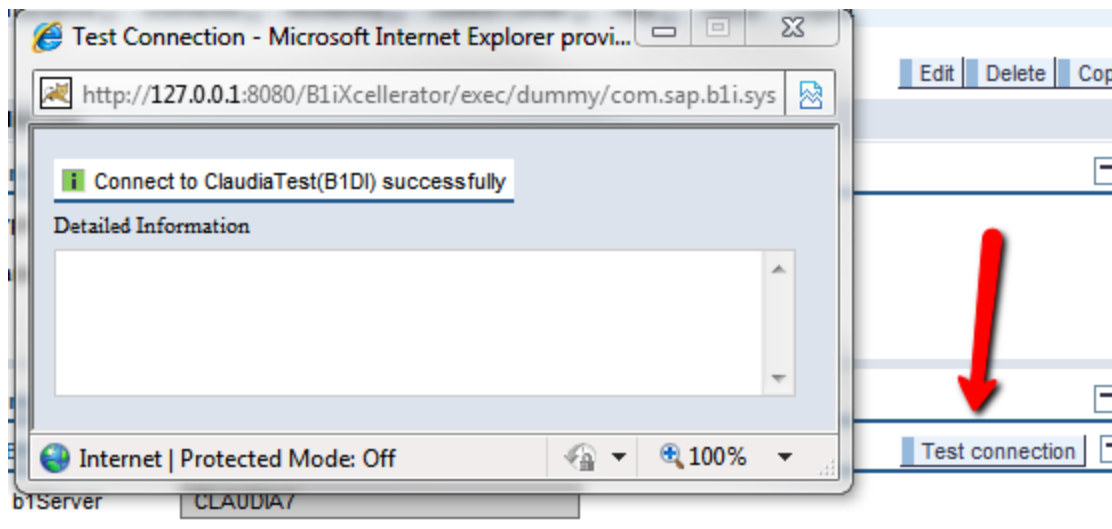
- Change Password. Unselect “Change Password at Next Logon” and check “Password Never Expires.” Click “Update” and “OK.”



- Log off and log on the company with your B1i username and password.
- Do the “User” steps for all companies. You do not need to do the “license” steps for all companies; it is enough by making the changes to one.
- Go back to “Integration Solution for SAP Business One.” Change password for the B1i user to the password that you set in SBO previously.

userName	<input type="text" value="B1i"/>
password	<input type="password" value="....."/>
language	<input type="text" value="English(US)"/>

- Click on “Choose Connection”

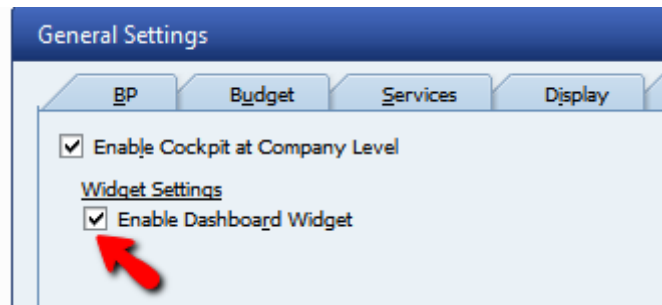


If the following error shows up: “RejectedException: XCE041 Whole Adapter-Pool currently is deactivated” just wait a few minutes and test the connection once again. The success box should show up now.

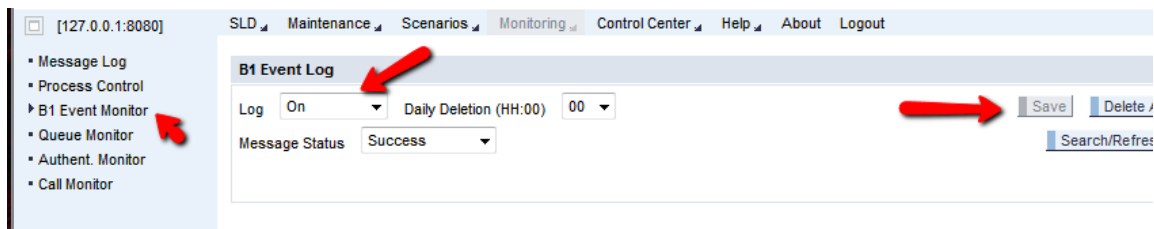
- Go to “HAnyforXcelsius” and input the name of your server in the destHost “box.” Click Save.

<ul style="list-style-type: none"> ▪ Claudia7 ▪ XMLFileSystem ▪ WSforMobile ▪ HAnyforXcelsius ▪ SBO-COMMON ▪ HAnyforRFQ 	<div> ID <input type="text" value="001sap0004"/> </div> <div> Connectivity List (Active) </div> <div> HTTA </div> <div> destProtocol <input type="text" value="http"/> </div> <div> destHost <input type="text" value="Claudia7"/> </div> <div> destPort <input type="text"/> </div> <div> destPath <input type="text"/> </div> <div> query <input type="text"/> </div>
--	---

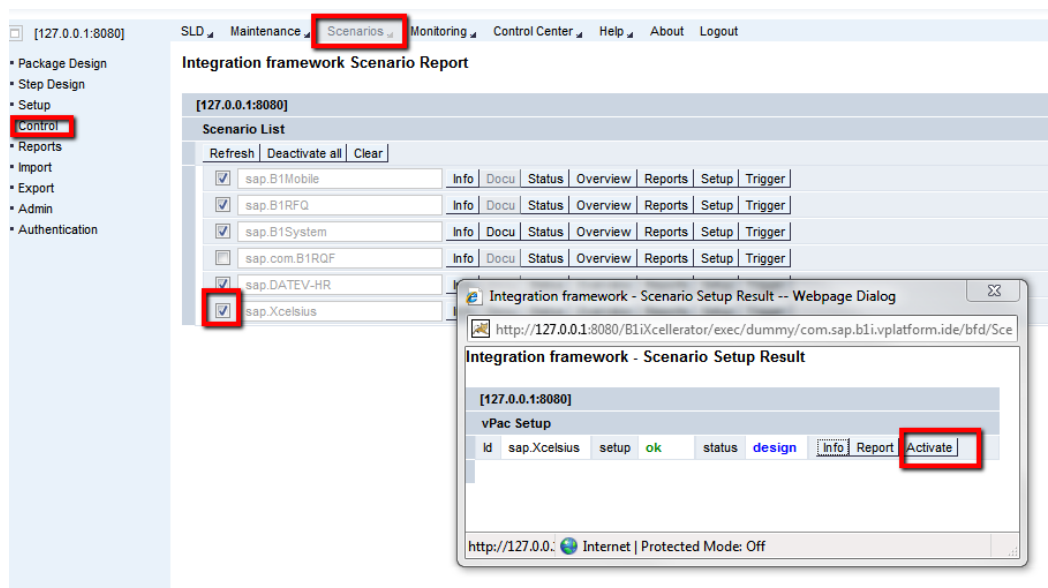
- Log off SAP B1 and log on with your “manager” user. Go to Administration > System Initialization > General Settings > Cockpit > Check Enable Dashboard Widget.



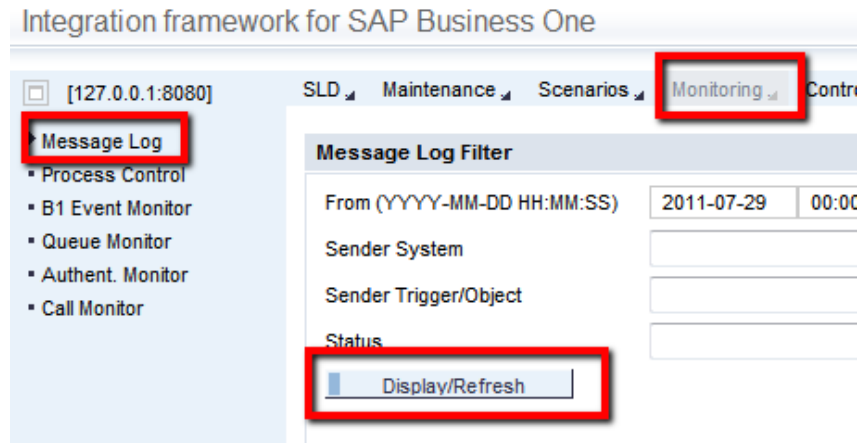
- Exit SAP Business One.
- Go back to “Integration Solution for SAP Business One” and click on “Monitoring.” Click on “B1 Event monitor” and switch from “Log off” to “Log On.” Click on “Save.”



- Click on Scenarios > Control > uncheck box for sapxcelsius > check box again > dialog box will appear > click on Activate. Click OK and OK to the pop-ups.



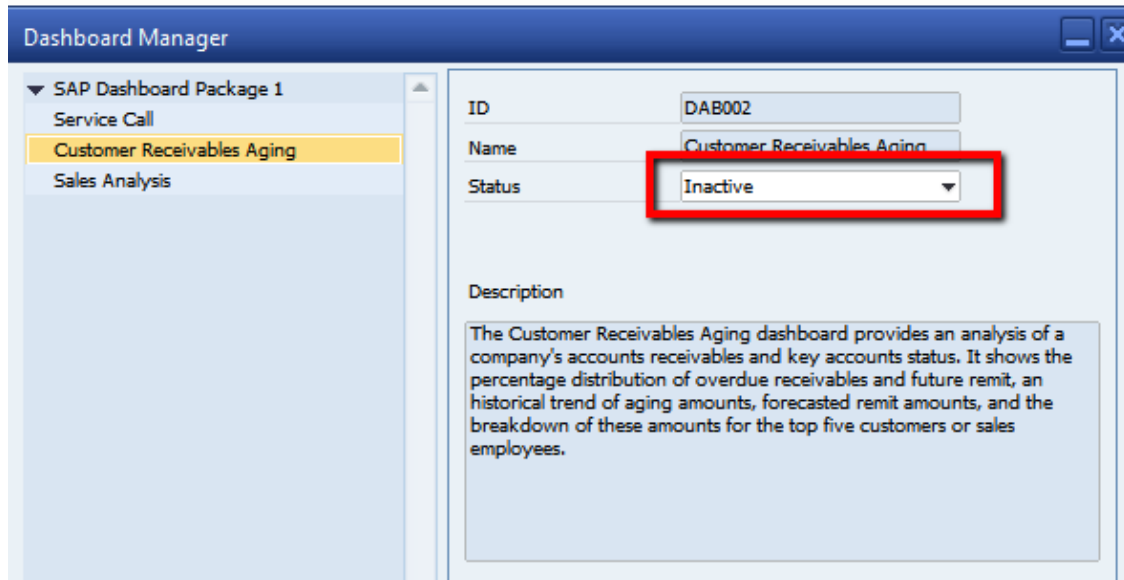
- Go to “Monitoring” > Message Log > Display/Refresh



- You should see the following row: (if not, you may have missed a step and need to go over it again making sure you follow every single step).

Message Log							
Success(10)							
Dbg	Msg	Del	Ret	Sender System	Sender Trigger/Object	Receiver System	Start Date Time
				B1i Server	sap.B1SysSLDSync	B1i Server	2011/07/29 08:3
				B1i Server	sap.B1SysSLDSync	B1i Server	2011/07/29 08:3
				B1i Server	sap.B1SysSLDSync	B1i Server	2011/07/29 08:3
				B1i Server	sap.XcelCacheRefresh	B1i Server	2011/07/29 09:0
				B1i Server	sap.XcelCacheRefresh	B1i Server	2011/07/29 10:0
				B1i Server	sap.B1SysSLDSync	B1i Server	2011/07/29 10:2
				B1i Server	sap.B1SysSLDSync	B1i Server	2011/07/29 10:2
				B1i Server	sap.B1SysSLDSync	B1i Server	2011/07/29 10:2
				B1i Server	sap.B1SysSLDSync	B1i Server	2011/07/29 10:2
				SBODemoUS	1210000008	B1i Server	2011/07/29 10:3

- Open SAP and go to “Administration” > Set Up > General > Dashboard manager > Customer Receivables Aging > Active. Do the same for “Sales Analysis.”



- Changes will be updated by the next Log On. If widgets do not show right away. Go to Service under “My Cockpit” and click Yes/OK to the dialog box.

Troubleshooting

What to do in case DBs do not appear under the SLD > B1i Server Dropdown:

- Check that ports are open – contact IT administrator
- Read the following note in case there was a failure in the Install/Upgrade of the B1i (related to the Framework.zip file)
https://websmp230.sap-ag.de/sap%28bD1lbiZjPTAwMQ==%29/bc/bsp/sno/ui_entry/entry.htm?param=69765F6D6F64653D3030312669765F7361706E6F7465735F6E756D6265723D30303031363533353132261653512 - B1i_ Issues with new DBs after upgrade or installation (8.82 PL5)

<p>Symptom</p> <p>Dashboards are not working in new / upgraded DB - e.g. cannot activate dashboards for a particular company or dashboards do not get displayed.</p> <p>Mobile solution does not work with new / upgraded DB.</p> <p>Cause</p> <p>While there are issues reported more frequently - in rare cases a problem was reported that was connected to the import of ZIP files to the B1i database during the installation / upgrade phase.</p> <p>If e.g. the import of the "Framework.zip" file fails the B1i Framework runtime and design time may not get updated (what has so far only been seen on systems which were not set up properly - or were sized to small). As a consequence core processes of the "integration Component" may fail subsequently - such as adding new databases to B1i and enabling support for dashboards in SAP Business One.</p> <p>If (scenario) packages cannot get imported - the available functionality may not be up-to-date.</p> <p>As a result of such an import issue files named "ex_20....txt" may have been created in folder "...\\SAP Business One Integration\\B1iServer\\Tomcat\\webapps\\B1iXcellerator\\setup"; those files will contain the exact ZIP file name.</p> <p>Solution</p> <p>Workaround:</p> <p>The general recommendation is to run the setup once more; find the setup.exe file in the SAP Business One installation or upgrade package; it is located at: "...\\Packages\\B1 Integration Component\\Technology".</p> <p>Setup will turn into "Repair" mode and should repair issues connected to the described cause.</p> <p>Alternatively you might want to try to import the particular file that failed to get imported during setup:</p> <p>If the "Framework.zip" package failed to get imported - import it via "Integration Framework" UI:</p> <p>Go to "Maintenance" -> "ZIP Import" and browse for the file in the SAP Business One installation or upgrade package; it is located at: "...\\Packages\\B1 Integration Component\\Technology\\Program ExternalContent"</p> <p>Then press "Submit".</p> <p>If scenario package failed to get imported, go to "Scenarios" -> "Import" - and locate the corresponding file at the same place.</p>
--

- If the above does not work: detach databases.
 Go to SQL and detach the databases that do not show
 Stop and Start the Integration Framework
 Go to B1, refresh the display companies window (they should not appear)

Stop and Start the Integration Framework

Retach the DBs under SQL (go and find the MDF files to retach)

Go to B1, refresh the display companies' window, they should show.

It will take a while for the companies to appear under the SLD > B1iServer dropdown. To monitor this update go to Monitoring > Message Log under the Integration Framework (internet explorer link)