

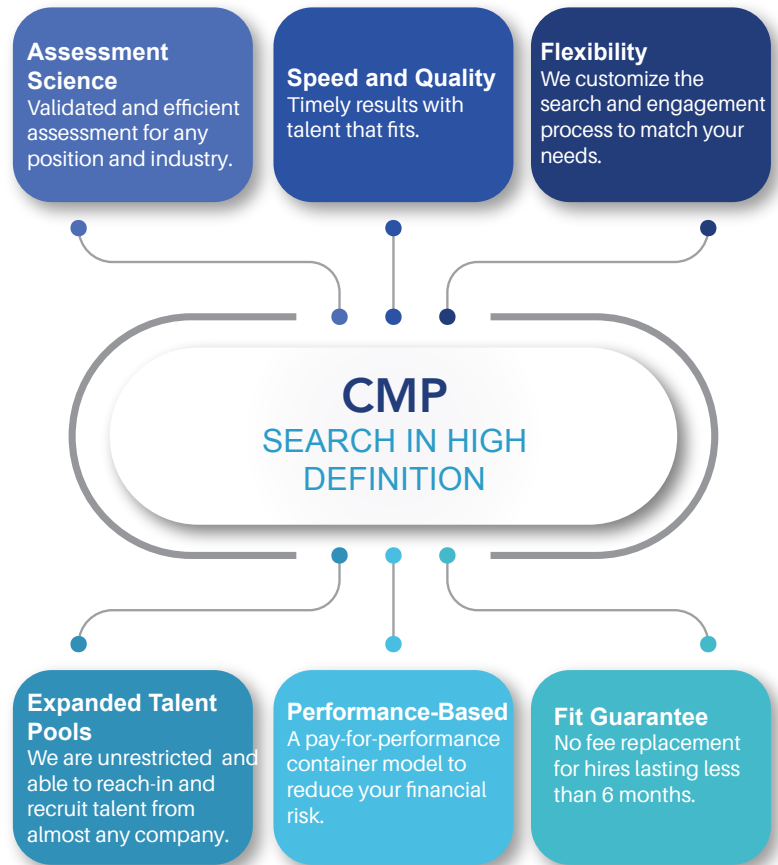


## CMP SEARCH IN HIGH DEFINITION

### Search in High Definition

#### Taking Recruitment to the Next Level

CMP takes much of the guesswork out of hiring through a high-definition, efficient and assessment-based talent acquisition approach. We utilize an empirical assessment process to evaluate candidates' abilities, professional expertise, leadership temperament, cultural compatibility, and potential.



#### Did You know?

- ◆ Human Resource teams that use data-driven recruiting are 2X more likely to find talent faster (LinkedIn).
- ◆ 86% of employers say they have hired the wrong person for a position (Career Builder).
- ◆ 98% of candidates who had a positive recruiting experience would refer others to apply (Kelly Services).

#### CMP High Definition Search provides the best value and results

- ◆ Realizing that your business and every role within your organization is unique, we customize search solutions using multi-channel source tactics to locate top talent.
- ◆ We don't waste your valuable time with unqualified candidates. We embed validated assessment to realize deeper candidate insights, prediction and fit.
- ◆ With High Definition Search your organization will benefit from a performance-based model that delivers expanded talent pools, speed and quality, flexibility, and leverages assessment science to deliver guaranteed results.

I've worked with CMP on two executive searches over the past 12 months. Both of them were very successful and the candidates we hired have done an outstanding job. They have strong search capabilities and they worked with us well during the search process. I will continue to utilize their services for future executive searches.

**Larry Sherrell**  
Vice President, Human Resources, Lexipol

CMP is a talent and transition firm in the business of developing people and organizations across the full talent life cycle – from talent acquisition and leadership development, to organization development and career transition support. To learn more, give us a call today at 800.680.7768 or request more info.