

CMP

Career Management Partners Acquisition – Development – Outplacement

July 2015

Key Changes at CMP

Greetings From Joe Frodsham President, CMP

We hope your summer is proving to be as exciting as ours! At CMP we have had a lot of change, fortunately all of it for the good.

This month's newsletter is dedicated to sharing the relevant changes at CMP. In this issue, we:

- Welcome Amanda Connelly as our new Talent Development Solutions (TDS) leader.
- Show you our new digs! Yep, we've moved.
- Announce an open house for Keith Nave and a chance to visit our new offices.



Joe Frodsham

All of these changes will help us continue to execute our mission, which is to provide our clients with the absolute best solutions across the full talent life cycle.

Best Regards,

In This Issue

[Greetings from Joe Frodsham](#)

[CMP's New Leader for Talent Development Solutions](#)

[Moving on Up...CMP has MOVED!](#)

[Open House](#)

[Join Our Mailing List!](#)

New Product: *Career Launch*

We've heard you - in response to client requests for an affordable, virtual career transition solution, we have created *Career Launch*. *Career Launch* offers an affordable and portable career transition option with online tools and

Joe

CMP's New Leader for Talent Development Solutions

CMP welcomes Amanda Connelly as the new leader of the Talent Development Solutions (TDS) Practice. Amanda will continue the TDS focus on partnering with client organizations to build and align talent. This includes providing coaching, team and organization development solutions to enhance performance and potential at all levels.



Amanda comes to CMP with broad experience as an HR executive. Most recently, Amanda has implemented award winning human capital strategies at CVS Caremark, a Fortune 12 Healthcare/Pharmacy company. She has also partnered with senior leadership to drive strategic and operational effectiveness in both the restaurant and financial services industries. Amanda attained her Master's Degree in Human Resources with a specialization in Change Management as well as a B.A. in Public Administration at the University of Central Florida.

Favorite Quote:

*"You don't build a business. You build people and then **people** build the business."*

Please join us in welcoming Amanda to CMP!

Moving on UP...CMP has MOVED!

After 16 terrific years in our Palisades I office, we have now moved up to II - Palisades II that is. We are stretching into our new offices, and fully enjoying it!

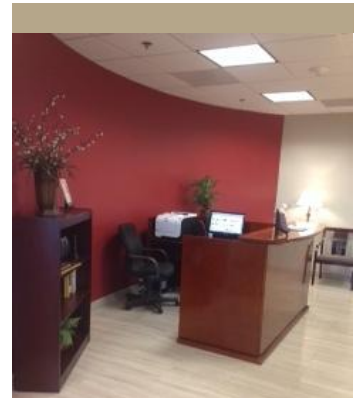
Please come visit us at Palisades Central II, 2435 N Central Expressway Ste 830 Richardson, TX 75080.

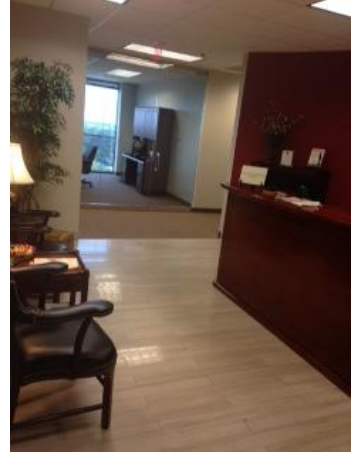
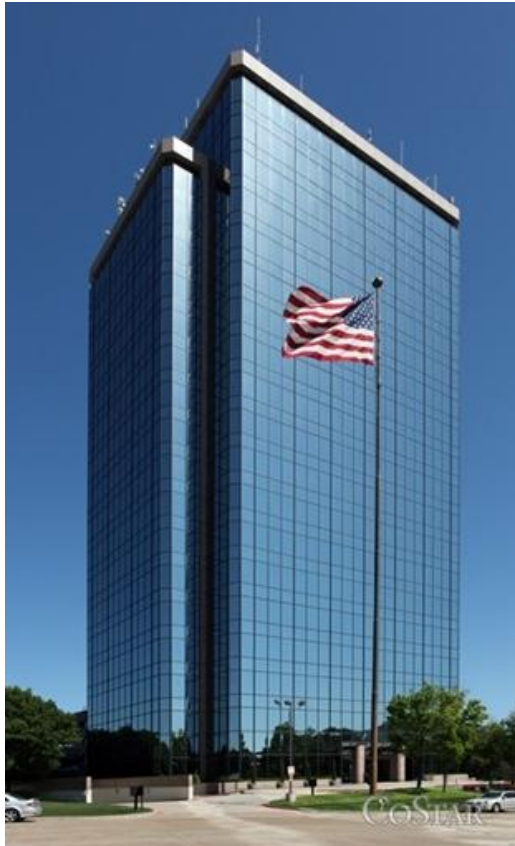
We're here every week day from 8:00 to 5:00 pm.

consultant support.

Career Launch includes one-on-one telephone support, including an 800 number to use for immediate help at unscheduled times.

To learn more, please email or contact either Susan Glen, susang@careermp.com or Kathy Johnson, kathyj@careermp.com.





Open House Event for Keith Nave

As you probably know, Keith Nave transitioned into an active retirement at the beginning of this year. He is thoroughly enjoying himself.



In the midst of Keith's active schedule, we have found a date to host an event in his honor. Please mark your calendar for Wednesday, September 9th. This will be a drop-in event from 4:00 pm-7:00 pm in the CMP offices.

We look forward to seeing you there!

Joe Frodsham
President
Career Management Partners

972.680.9200
www.careemp.com