

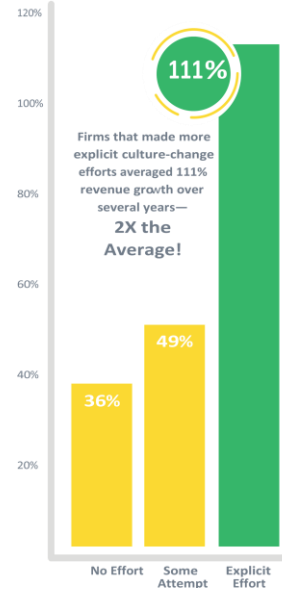


EMPLOYEE CULTURE ANALYSIS

Strengthen Predictive Solutions for Culture and Employee Engagement

OVERVIEW

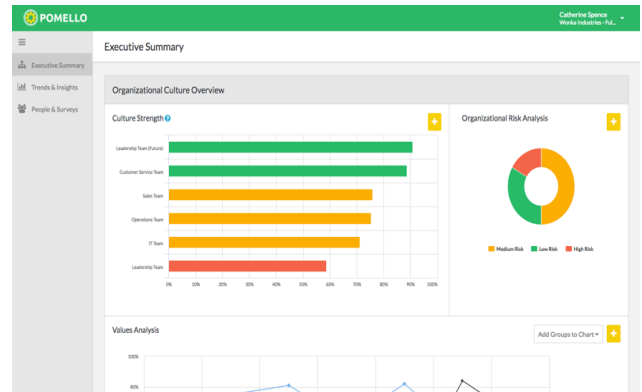
An analytics solution that helps companies understand and hire based on their unique culture as well as **improve employee engagement**. The technology benchmarks an organization's culture by gathering critical input on how employees view the company's core values, as well as their own motivators, and then **measures** candidates against that data to gauge culture fit. By continually engaging the process, companies can better understand their culture and consistently improve it to **enhance performance**.



QUANTITATIVE

Culture is the **pattern of behavior** that is reinforced by people and systems over time.

- ◆ Culture is a social control system that already operates within your organizations.
- ◆ If you don't manage it, this control system can undermine your ability to effectively execute your strengths.
- ◆ You can diagnose and manage the culture in your company.
- ◆ Quantify cultural strength on both boards.
- ◆ Compare desired values vs. existing values.
- ◆ Set cultural strength goals & track progress.
- ◆ Empower a cohesive board with deep cultural insights.
- ◆ Surface underlying cultural issues.
- ◆ Improve board engagement.
- ◆ Measure the ROI of culture initiatives.
- ◆ Transform culture to meet the desired state.
- ◆ Align new board around cultural gaps & needs.



Statistics indicate that actively managed company can lead to **twice** the average revenue growth when compared to companies that are not actively managing their culture.

CMP is a talent and transition firm in the business of developing people and organizations across the full talent life cycle – from talent acquisition and leadership development, to organization development and career transition support. To learn more, give us a call today at 800.680.7768 or request more info.