

*Panelize Your Dreams*

***With Enercept,***

*The Better Way To Build.*



**ENERCEPT®**

Structural Insulated Panels  
The Builders' Choice  
[www.enercept.com](http://www.enercept.com)



## **STRONGER**

ENERCEPT SIPS ARE 2 1/2 TIMES STRONGER THAN CONVENTIONAL STICK FRAMING.



**PROUDLY  
MADE IN  
THE USA**



## **STRUCTURAL INSULATED PANELS (SIPs)**

A high performance building system for all types of construction. SIPs are manufactured indoors in a controlled environment and can be fabricated to fit nearly any building design, including retrofit projects.

### **THE RESULT**

A building system that is extremely strong, energy efficient and cost effective.



## **ULTIMATE INSULATION**

Enercept wall and roof panels, as well as below grade panels, are manufactured with a foam insulating core, usually 5 1/2" to 12" thick, providing ultimate protection against heat and cold.





*"Working with Enercept was a breeze. The SIPs panel construction is proving to be a very wise choice. The cost to heat it has been less than we thought it would be. Friends and neighbors are very impressed."*

Tom and Judith Garnett

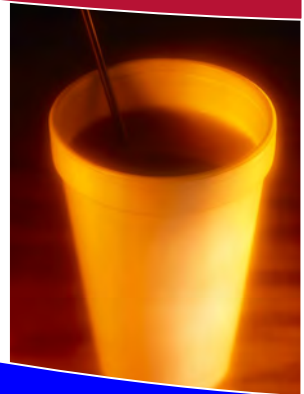
## EXPERIENCED

ENERCEPT HAS OVER 35 YEARS OF EXPERIENCE IN THE SIPs BUILDING INDUSTRY.



## FOAM FACT

FOAM IS AN EXCELLENT INSULATOR. A 1/8" THICK FOAM CUP PROTECTS YOUR BARE HANDS FROM 175° LIQUID INSIDE THE CUP.



## WHY BUILD WITH ENERCEPT STRUCTURAL INSULATED PANELS?

- SUPER ENERGY EFFICIENCY - Save 40% or more on annual heating and cooling costs
- ECO-FRIENDLY - Made with oriented strand board (OSB), very little lumber; protect our natural resources
- QUICKER CONSTRUCTION CYCLE - Move in earlier with one step framing, sheathing and insulating
- HEALTHIER INDOOR AIR QUALITY - Less air infiltration keeps clean air in, allergens and dust out
- QUIET - Wind and other outside noises are greatly reduced with Enercept SIPs
- LESS ON-SITE WASTE - Window and door openings are cut at the factory and framed with headers in place; cleaner job site, less cost to remove waste
- 2 1/2 TIMES STRONGER THAN STICK-BUILT - Sturdy and safe
- CODE CERTIFIED - ICC #ESR-1780 & NTA #ENR0120-21
- BUILDER FRIENDLY - Factory-installed connectors aid with quick building erection
- EXCELLENT CUSTOMER SERVICE - From estimate to completion and beyond, Enercept will be here to help





## ENERGY EFFICIENT

SAVE 40% OR MORE ON HEATING AND COOLING COSTS COMPARED TO CONVENTIONAL STICK BUILT CONSTRUCTION.



## IDEAL FOR PASSIVE ENERGY DESIGNS

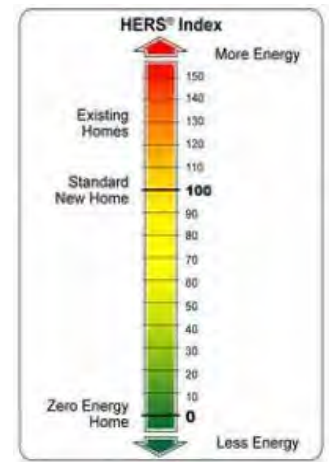


## HOME ENERGY RATING SYSTEM

A HERS® Rating is an official analysis of a home's energy performance. The lower the number is the more efficient your home is.

A home with a HERS® Index of 36 is 64% more energy efficient than a standard new home.

Each one-point decrease in the HERS® Index is equal to a 1% reduction in energy consumption.



This five bedroom, 5,330 sq. ft. Enercept Home boasts a HERS® Index of 36 and qualifies for the Energy Star® Label.

The home is located in Sioux Falls, SD. Total estimated annual heating and cooling costs are \$887.



## BENEFITS OF GREEN CONSTRUCTION

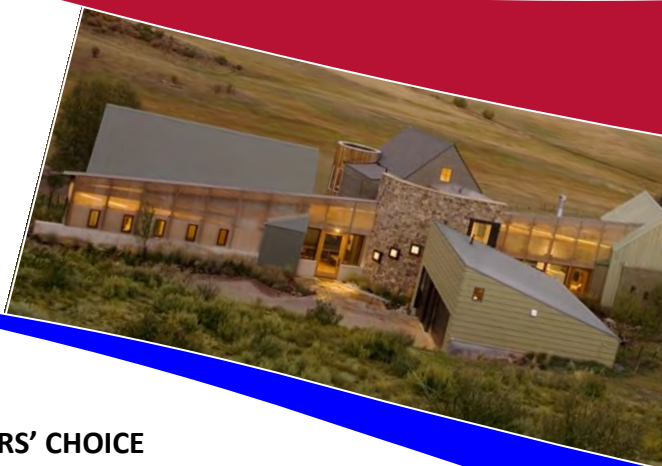
- \* Clean
- \* Healthy
- \* Durable
- \* Marketable
- \* Comfortable
- \* Lower Environmental Impact

*"Our Enercept home is so air tight that even after two months away, there is no dust on the furniture."*

J. Cillessen, Colorado

## CUSTOMIZED

ENERCEPT SIPS ARE THE MOST FULLY CUSTOMIZED SIPS ON THE MARKET.



## TAKE POSSESSION SOONER

ONE-STEP FRAMING, SHEATHING & INSULATING REDUCES CONSTRUCTION TIME LINE.



## THE BUILDERS' CHOICE

Builders prefer Enercept's easy-to-install connecting post system and factory-installed door and window openings.

These features make construction easier and faster, plus the pre-framed openings leave less waste on the job-site and put less stress on our landfills.



## ENERCEPT STRUCTURAL INSULATED PANELS, THE ENVIRONMENTALLY FRIENDLY BUILDING SYSTEM

Made with OSB produced from fast growing, underutilized and less expensive trees grown on tree farms. Built with less lumber than stud wall construction. Scrap foam and wood from our production cycle is ground and recycled.

SIPs contain no CFC's or Urea-Formaldehyde.

Finished product is airtight and extremely energy efficient.





## **CUSTOM MADE**

TO REFLECT YOUR VISION FOR THE  
ENERGY EFFICIENT HOME OF  
YOUR DREAMS.



## **LIFETIME OF ENERGY SAVINGS**



### **COST:**

Choosing superior products and technologies may increase initial costs. However, when you factor in the material cost, labor expense, job site waste and the lifetime benefit of energy savings, the Enercept system is your low cost building solution.

### **R-VALUE:**

There are three methods of heat transfer: convection, conduction and radiation. R-value is the measure of resistance to heat loss by conduction only. The most important factor in thermal efficiency is the continuity of the insulation. The Enercept system provides a solid envelope of continuous insulation. The Enercept system has the ability to resist heat transfer by both conduction and convection (air movement). By comparison, according to an Oak Ridge National Laboratory study, a conventional stick-built home would require a R-40 wall to compete with a 6-inch Enercept wall (R-24).

### **WIRING:**

Enercept was the first SIP company to patent factory-installed electrical chases. Chases are usually marked on the interior sheathing of the panels for easy identification. Enercept roof panels are typically pre-wired in the factory per customer specifications. Your installer simply drills holes through the sill and top plates for access to the electrical chases. A comprehensive electrical guide is available.

### **ROOF VENTING:**

A ventilated roof is not necessary in most climates. Model codes allow both vented (cold roof) and unvented (hot roof) roof assemblies. Because Enercept roof systems are insulated, conductive heat loss is avoided, negating the problems usually associated with an unvented roof. If the roof must be ventilated, 2x strips can be attached to the roof and covered with sheathing to form a vented layer over the panels.

### **MOISTURE:**

Enercept structures are extremely airtight compared to other building methods. Generally a moisture barrier, like house wrap, is applied to the exterior of the structure. Seam tape is provided for interior panel connections. The use of an air exchanger is highly recommended.



*"Thank you for your participation in making  
my refuge possible."*

Lynn Harmon

## WARRANTY

ENERCEPT OFFERS A LIMITED  
LIFETIME WARRANTY (COPIES  
AVAILABLE BY REQUEST).



## THIRD PARTY TESTED

TESTED AND APPROVED BY  
RADCO AND NTA, INC.  
ICC/ICBO APPROVED.  
ACCEPTED FOR USE BY  
HUD.



Enercept Structural Insulated Panels do not  
contain CFC's and do not produce off-gassing  
of dangerous chemicals.

Insulation Thickness	5 1/2"	7 1/4"	9 1/2"	11 7/8"
R-Value	23	30	38	46
Weight	3.75	4.2	4.6	4.9

R-Values and weight for Enercept SIPs







## ROOF PANELS

AVAILABLE IN SIZES UP TO 8-FEET WIDE AND 24-FEET LONG. ROOF PANEL THICKNESS WILL VARY, DEPENDING ON THE DESIGN LOAD AND R-VALUE NEEDS.

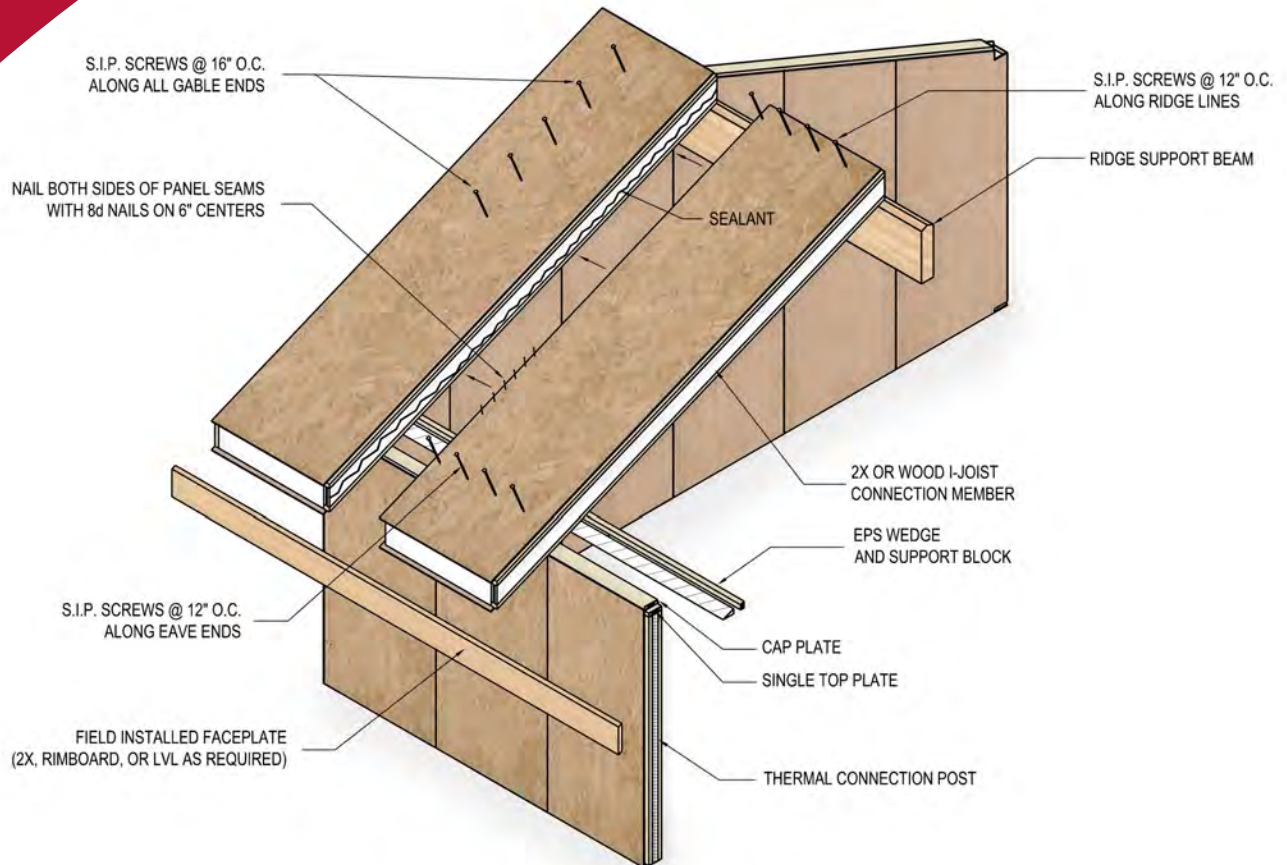


## STRUCTURAL I-JOIST CONNECTION



The Enercept structural roof system offers the choice of an insulated attic space or vaulted ceilings with optional loft space.

A SIP roof provides optimal protection from summer heat and winter cold.



## ENERCEPT ROOF PANEL SYSTEM

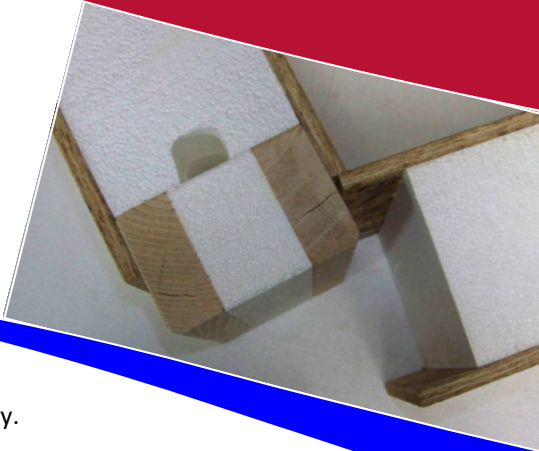


*"This is our third Enercept building; I would not build with anything else."*

Shade' Vineyards, Volga, SD

## INSULATED CONNECTING POST

FACTORY INSTALLED, EASY TO  
ASSEMBLE

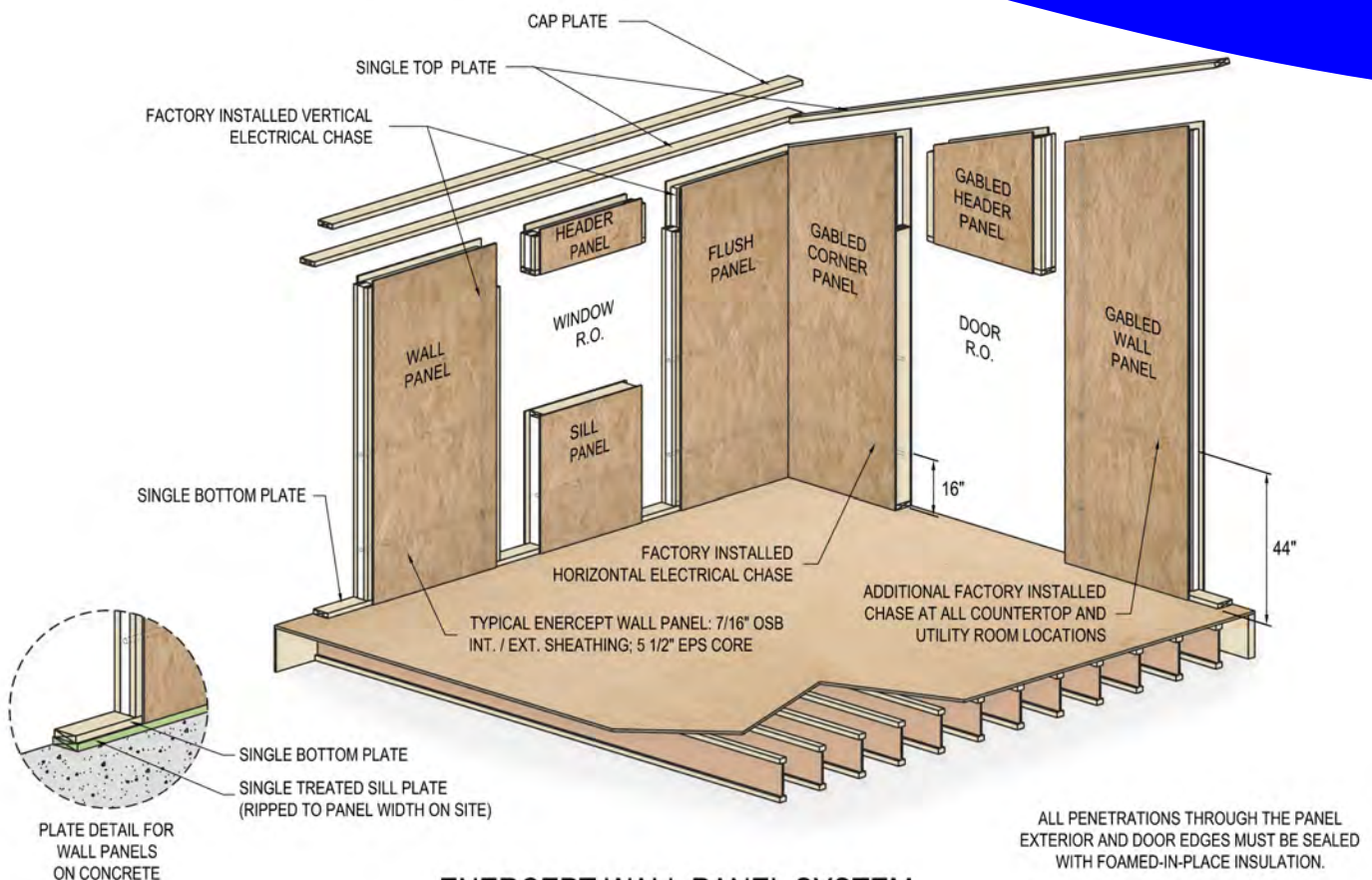


Rough openings are custom  
built and framed in at the factory.

Bottom sill plates, top plates and panel sealant are all  
included with your Enercept building package.

## CORNER ADJUSTMENT PANEL

ON SITE ADJUSTMENTS ARE  
EASILY DONE WITH THE  
CORNER ADJUST PANELS.



## ENERCEPT WALL PANEL SYSTEM



## GABLE END PANELS

BONUS SPACE, USABLE  
SQUARE FOOTAGE, LOFTS,  
AND OPEN SPACE.



## PRECISE PITCH

EXPOSED BEAM



All Beams, wall-to-wall panel ties  
and roof screws are included in the  
Enercept package.





*"We are writing this letter to let you know how pleased we are with our Enercept home. It is tight, warm, extremely comfortable and very easy to heat. Our first full year's heating costs were only \$217.27. We want to thank you and your company for a good product at a fair price, we wholeheartedly endorse your system."*

Leon and Edith

## ENERCEPT WALL PANELS

BECAUSE THE MOST IMPORTANT  
THING ABOUT YOUR HOME IS ON  
THE INSIDE.



**VAULTED  
CEILING MAKES  
LIVING SPACES  
FEEL LARGER**



Enercept includes a laminated diagram of  
the panel assembly, a construction guide  
and an electrical guide with every order.



Custom window lay-outs and  
door openings are routine  
business for Enercept's  
experienced drafting team.

If you can dream it,  
we can build it.

Enercept Structural  
Insulated Panels.





## BASEMENT & FOUNDATION PANELS

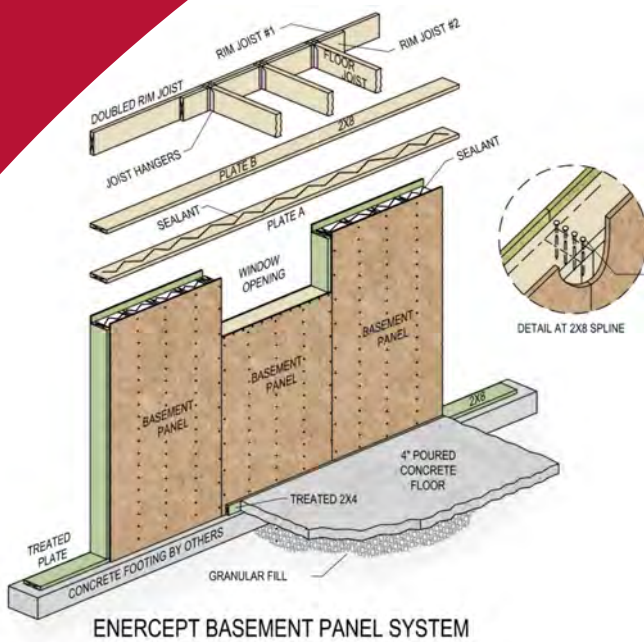
BELOW GRADE SIPS, TO KEEP  
YOU COMFORTABLE FROM  
HEAD TO TOE



## ENERCEPT FLOOR PANELS



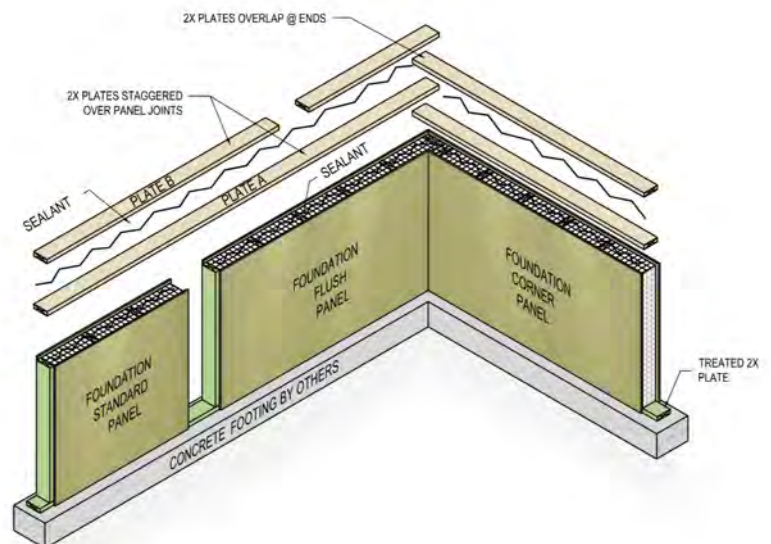
Perfect for walk-out  
basements



The prebuilt nature of the Enercept basement system allows for fast construction and eliminates the need to fur-out walls.

Green treated 2x lumber is placed at 12" o. c. in basement panels and 16" o. c. in foundation panels for added strength.

Enercept basement & foundation panels use treated plywood for the exterior skin.



## ENERCEPT FOUNDATION PANEL SYSTEM



"Product delivered in two loads on two days, as requested. Four of us assembled a 30x78 foot home in seven days. We [as do-it-yourselfers] were amazed we could assemble a house in such a short time frame. Good product, good support; looking for proven results. Overall this was a very good experience!"

D. Lewis - Clark, SD

## PRECISION

ROUGH OPENINGS AND  
CUSTOM SHAPES ARE  
CUT WITH OUR  
FULLY-AUTOMATED  
*HUNDEGGER SAW.*



## JUMBO WALL AND ROOF PANELS



Welcome Home!

Enercept 8-foot wide jumbo wall and roof panels are custom made with the same great features of the Enercept 4-foot wide panel:

- ⇒ Roof panels that are pre-wired (subject to local building codes).
- ⇒ Wall panels are available with window and door openings that are pre-framed.

When installed horizontally, as an 8-foot high wall the framing, insulating and sheathing for a 24-foot span wall is possible with just one panel.

Enercept Jumbo Panels have been third party tested by NTA, Inc. Enercept 8-foot wide panels can be engineered to meet your specific requirements.





**SIPS FOR  
COMMERCIAL,  
INDUSTRIAL...**

SMALL BUILDINGS OR  
LARGE, ENERCEPT CAN  
FILL YOUR SIP NEEDS.



**...AND  
AGRICULTURAL  
BUILDINGS**





"I've been using Enercept panels for the roof and gables of the log homes I build for many years. The people at Enercept are friendly, knowledgeable and always helpful. The panels are amazingly easy and fast to assemble because they come completely fabricated. The window openings and complex roof angle cuts are done at the factory - we don't have to cut any panels on site, they just slip together."

Mike Sines, Bear's Den Log Homes  
Pierre, SD

## TIMBER FRAME ENCLOSURE SYSTEMS

PROTECT THE BEAUTY OF  
YOUR TIMBER FRAME.



TOP OFF YOUR  
LOG OR ICF  
HOME WITH AN  
ENERCEPT ROOF  
SYSTEM



Custom Timber Frame Homes



# *Proven Leader in the SIPs Industry for Over 30 Years. Enercept, The Better Way To Build!*

Enercept specializes in SIPs for residential, commercial, industrial and agricultural use.

Enercept manufactures fully customized SIPs, solid blank SIPs that can be fabricated on site, and non-structural insulated panels in sizes up to 8'x24'.

**Call for a free estimate!**



**Blue Wave On The Bay, Ashland, WI**

Winner 2016 SIPA Building Excellence Award  
Commercial Buildings Category Under 10,000 sq. ft.

Enercept, Inc.  
Structural Insulated Panels  
3100 9th Ave SE  
Watertown, SD 57201  
605-882-2222  
[www.enercept.com](http://www.enercept.com)  
email: [info@enercept.com](mailto:info@enercept.com)



**Structural Insulated  
Panel Association**