

NO MATTER THE JOB...

**NEW
SIZES**

2140 ALLOY SHACKLES

DEMAND CROSBY

CROSBY JUST EXPANDED IT'S LINE OF 2140 SHACKLES TO INCLUDE 10 NEW SIZES

- Alloy bolts and forged alloy bows.
- Meets performance requirements of Grade 8 shackles.
- Approved for use at -40 degree C (-40 degree F) to 204 degree C (400 degree F).
- Quenched & Tempered and can meet DNV impact requirements of 42 joules (31 ft-lbs.) at -20 degrees C (-4 degree F).
- Type approval and certification in accordance with ABS 2006 Steel Vessel Rules 1-1-17.7, and ABS guide for certification for cranes.



Crosby[®]

www.thecrosbygroup.com

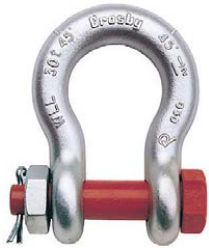
Crosby® Alloy Bolt Type Shackles

Load Rated



APPLICATION INSTRUCTIONS REFERENCE GENERAL CATALOG

G-2140 / S-2140 ALLOY BOLT TYPE ANCHOR SHACKLES

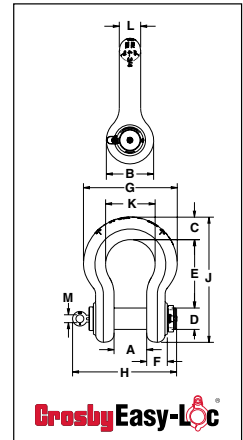
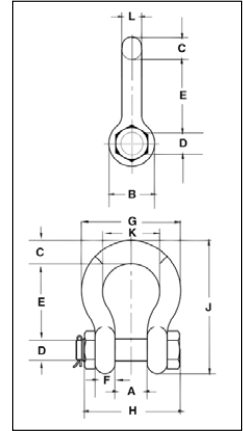


G-2140 meets the performance requirements of Federal Specification RR-C-271F, Type IVA, Grade B, Class 3, except for those provisions required of the contractor. For additional information, see General Catalog.



G-2140E
Crosby Easy-Loc

- Quenched and Tempered.
- Alloy bows, Alloy bolts.
- Forged Alloy Steel 30 thru 200 metric tons. Cast Alloy Steel 250 thru 400 metric tons. Meets performance requirements of Grade 8 shackles.
- Working Load Limit is permanently shown on every shackle.
- 30, 40, 55, and 85 metric ton shackle bows are available galvanized or self colored with pins that are galvanized and painted red.
- 120, 150, 175 metric ton shackle bows are hot-dip galvanized; pins are Dimetcoted® and painted red.
- 200, 250, 300 and 400 metric ton shackle bows are Dimetcoted®; pins are Dimetcoted® and painted red.
- Shackles 30T and larger are **RFID EQUIPPED**.
- Approved for use at -40 degree C (-40 degree F) to 204 degree C (400 degree F).
- Shackles are Quenched and Tempered and can meet DNV impact. Requirements of 42 joules (31 ft-lbs.) at -20 degree C (-4 degree F).
- All sizes are individually proof tested to 2.0 times the Working Load Limit.
- Refer to page 85 for Crosby COLD TUFF® shackles that meet the additional requirements of DNV rules for certification of lifting applications - Loose Gear.
- Shackles 200 metric tons and larger are provided as follows.
 - Serialized Pin and Bow
 - Material Certification (Chemical)
 - Magnetic Particle Inspected.
 - Certification must be requested at time of order.
- Meets or exceeds all requirements of ASME B30.26 including identification, ductility, design factor, proof load and temperature requirements. Importantly, these shackles meet other critical performance requirements including impact properties and material traceability, not addressed by ASME B30.26.
- Type Approval and certification in accordance with ABS 2006 Steel Vessel Rules 1-1-17.7, and ABS Guide for Certification of Cranes.
- Look for the Red Pin® . . . the mark of genuine Crosby quality.



G-2140E / S-2140E Crosby® Alloy **Crosby Easy-Loc** Shackles

| Nominal Shackle Size (in.) | Working Load Limit (t)* | Stock No. | | Weight Each (lbs.) | Dimensions (in.) | | | | | | | | | | | | | Tolerance + / - | |
|----------------------------|-------------------------|-----------|---------|--------------------|------------------|-------|------|-----------|-------|------|-------|-------|-------|-------|------|------|------|-----------------|--|
| | | G-2140E | S-2140E | | A | B | C | D +/- .02 | E | F | G | H | J | K | L | M | A | E | |
| 4-3/4 | † 200 | 1021422 | - | 452 | 7.25 | 10.50 | 5.00 | 4.75 | 15.19 | 4.58 | 20.84 | 23.11 | 27.81 | 11.00 | 4.75 | 1.75 | 0.25 | 0.25 | |
| 5** | † 250 | 1021442 | - | 594 | 8.50 | 12.00 | 5.63 | 5.00 | 18.50 | 4.48 | 23.63 | 24.28 | 32.63 | 13.00 | 5.00 | 1.75 | 0.25 | 0.25 | |
| 6** | † 300 | 1021460 | - | 791 | 8.38 | 13.00 | 6.06 | 6.00 | 18.72 | 4.89 | 24.76 | 25.45 | 34.28 | 13.00 | 5.88 | 1.75 | 0.25 | 0.25 | |

G-2140 / S-2140 Crosby® Alloy Bolt Type Shackles

| Nominal Shackle Size (in.) | Working Load Limit (t)* | Stock No. | | Weight Each (lbs.) | Dimensions (in.) | | | | | | | | | | | | | Tolerance + / - | |
|----------------------------|-------------------------|-----------|---------|--------------------|------------------|-------|------|-----------|-------|------|-------|-------|-------|-------|------|------|------|-----------------|--|
| | | G-2140 | S-2140 | | A | B | C | D +/- .02 | E | F | G | H | J | K | L | A | E | | |
| 3/8 | 2 | 1021015 | - | 0.33 | 0.66 | 0.91 | 0.38 | 0.44 | 1.44 | 0.38 | 1.78 | 2.17 | 2.49 | 1.03 | 0.38 | 0.06 | 0.13 | | |
| 7/16 | 2 2/3 | 1021020 | - | 0.49 | 0.75 | 1.06 | 0.44 | 0.50 | 1.69 | 0.41 | 2.03 | 2.51 | 2.91 | 1.16 | 0.44 | 0.06 | 0.13 | | |
| 1/2 | 3 1/3 | 1021029 | - | 0.79 | 0.81 | 1.19 | 0.50 | 0.64 | 1.88 | 0.46 | 2.31 | 2.80 | 3.28 | 1.31 | 0.50 | 0.06 | 0.13 | | |
| 5/8 | 5 | 1021038 | - | 1.68 | 1.06 | 1.50 | 0.69 | 0.77 | 2.38 | 0.58 | 2.94 | 3.56 | 4.19 | 1.69 | 0.63 | 0.06 | 0.13 | | |
| 3/4 | 7 | 1021047 | - | 2.72 | 1.25 | 1.81 | 0.81 | 0.89 | 2.81 | 0.69 | 3.50 | 4.15 | 4.97 | 2.00 | 0.75 | 0.06 | 0.25 | | |
| 7/8 | 9 1/2 | 1021056 | - | 3.95 | 1.44 | 2.09 | 0.97 | 1.02 | 3.31 | 0.81 | 4.03 | 4.82 | 5.83 | 2.28 | 0.88 | 0.06 | 0.25 | | |
| 1 | 12 1/2 | 1021065 | - | 5.66 | 1.69 | 2.38 | 1.06 | 1.15 | 3.75 | 0.92 | 4.69 | 5.39 | 6.56 | 2.69 | 1.00 | 0.06 | 0.25 | | |
| 1 1/8 | 15 | 1021074 | - | 8.27 | 1.81 | 2.69 | 1.25 | 1.25 | 4.25 | 1.04 | 5.16 | 5.90 | 7.47 | 2.91 | 1.13 | 0.06 | 0.25 | | |
| 1 1/4 | 18 | 1021083 | - | 11.7 | 2.03 | 3.00 | 1.38 | 1.40 | 4.69 | 1.16 | 5.75 | 6.69 | 8.25 | 3.25 | 1.29 | 0.06 | 0.25 | | |
| 1 3/8 | 21 | 1021092 | - | 15.8 | 2.25 | 3.31 | 1.50 | 1.53 | 5.25 | 1.28 | 6.38 | 7.21 | 9.16 | 3.63 | 1.42 | 0.13 | 0.25 | | |
| 1-1/2 | 30 | 1021110 | 1021129 | 18.8 | 2.38 | 3.62 | 1.62 | 1.63 | 5.75 | 1.39 | 6.88 | 7.73 | 10.00 | 3.88 | 1.53 | 0.13 | 0.25 | | |
| 1-3/4 | 40 | 1021138 | 1021147 | 33.8 | 2.88 | 4.19 | 2.25 | 2.00 | 7.00 | 1.75 | 8.81 | 9.33 | 12.34 | 5.00 | 1.84 | 0.13 | 0.25 | | |
| 2 | 55 | 1021156 | 1021165 | 49.9 | 3.25 | 4.81 | 2.40 | 2.25 | 7.75 | 2.00 | 10.16 | 10.41 | 13.68 | 5.75 | 2.08 | 0.13 | 0.25 | | |
| 2-1/2 | 85 | 1021174 | 1021183 | 103 | 4.12 | 5.81 | 3.12 | 2.75 | 10.50 | 2.62 | 12.75 | 13.58 | 17.90 | 7.25 | 2.71 | 0.25 | 0.25 | | |
| 3 | 120 | 1021192 | - | 162 | 5.00 | 6.50 | 3.63 | 3.25 | 13.00 | 3.00 | 14.62 | 15.13 | 21.50 | 7.88 | 3.12 | 0.25 | 0.25 | | |
| 3-1/2 | † 150 | 1021218 | - | 268 | 5.25 | 8.00 | 4.38 | 3.75 | 14.63 | 3.75 | 17.02 | 17.62 | 24.88 | 9.00 | 3.62 | 0.25 | 0.25 | | |
| 4 | † 175 | 1021236 | - | 332 | 5.50 | 9.00 | 4.56 | 4.25 | 14.50 | 4.00 | 18.00 | 20.37 | 25.68 | 10.00 | 4.00 | 0.25 | 0.25 | | |
| 7** | † 400 | 1021478 | - | 1200 | 8.25 | 14.00 | 7.25 | 7.00 | 22.50 | 6.50 | 26.00 | 28.68 | 40.25 | 13.00 | 6.00 | 0.25 | 0.25 | | |

* Note: Maximum Proof Load is 2.0 times the Working Load Limit. Minimum Ultimate Load is 5 times the Working Load Limit on 2 thru 21 metric tons. For sizes 30 thru 175 metric tons, Minimum Ultimate Load is 5.4 times the Working Load Limit. For 200 thru 400 metric tons, Minimum Ultimate Load is 5.4 times the Working Load Limit. ** Cast Alloy Steel.
† Furnished with Round Head Bolts with an eyebolt for handling. For Working Load Limit reduction due to side loading applications, see the General Catalog.

□ New Smaller 2140 Product Line Sizes. □ Larger 2140 Product Line Sizes.