



Improve the efficiency of your work stations with our embossed ergonomic mats!

- Relieves stress on knee, foot and ankle joint pressure points resulting from long standing
- Provides better slip resistance and improved insulation than that of ceramic and cement floors
- As a logo mat, this anti-fatigue mat will reinforce your corporate position and inspire confidence

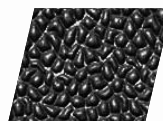
EMBOSSSED ANTI-FATIGUE MAT APPLICATIONS

Provides a light duty solution for dry areas e.g.: Service Counter, Mailroom, Cashier Station, Warehousing/Packaging Station

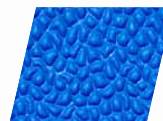
FEATURES

- Quality PVC foam is resistant to most chemical products
- High-quality embossed image technology for maximum durability
- Available in **Tuff-Spun®** 3/8" and in highly energized **Comfort-King™** 3/8" or 1/2"
- More than 25 PMS colors available (special color on request):

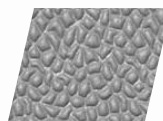
Comfort-King™



BLACK



ROYAL BLUE*



STEEL GRAY

Tuff-Spun®



GRAY



BLACK



AVAILABILITY		TECHNICAL DATA	FINISH	
STANDARD SIZES 2' X 3' 3' X 4' 3' X 5' 3' X 10'	ROLLS Unavailable	See individual Tuff-Spun™ or Comfort-King™ product sheets		
CUSTOM CUTS Available Call customer service		 TOTAL CONFIDENCE WARRANTY	Click or scan code for short video 	
USE AND CARE Spot clean with mild detergent				

AUTHORIZED DISTRIBUTOR



T: 1 800 628 5463
 F: 419 332 4180
www.crown-mats.com

