



Commercial Matting Systems

3-Mat Systems

Outdoor Mats

Indoor Mats

Logo & Specialty Mats

Ergonomic Mats

Food Service Mats

PRODUCT
CATALOG

www.crownmats.com



Outdoor
Mats

Indoor
Mats

Ergonomic
Mats

Promotional
Mats

Slip
Resistance
Mats

CROWN
MATTING TECHNOLOGIES

EXIT

WELCOME CENTER

CONNECTING

3-Mat
System

CROWN
MATTING TECHNOLOGIES

CELEBRATING
OVER
80
YEARS
OF
QUALITY
SERVICE

1943 2023

Crown Matting Technologies,

located in Fremont, Ohio, has been setting the pace in commercial matting, using proprietary innovative technologies to further our products and provide incomparable value to the industry for over 80 years.

From front door to back, and every step in between, Crown brings forward comprehensive matting solutions by offering the most diverse selection of matting in the industry, while continuing to lead in the area of custom cut matting solutions.

Crown Matting Technologies has been fortunate to serve a generation of business owners and public institutions, helping maintain and improve both the appearance and safety of buildings worldwide. We're honored to have done so. We look forward to continuing to bring forward innovative and comprehensive matting solutions for generations to come ... one mat at a time.

CROWN

MATTING TECHNOLOGIES

WORKING HARD FOR THE HARD WORKING

Total Confidence Warranty means we stand behind this product for the life of the product. See our website for complete details.



Exclusive ThermoFlex Technology offers increased durability and allows for custom width of up to 11'9".



Look for LOGO icon throughout this catalog to know which matting products are a part of our custom logo program.



Our patented Zedlan Foam outwears and outperforms standard foam by nearly 3 to 1.



Exclusive technology that permanently bonds two surfaces without use of glues or adhesives.



Our Slip-Resistant icon indicates foam products coated with our unique slip-resistant formulation to provide additional safety benefits.



The D.I.N.P. Free icon indicates products that comply with the State of California's Proposition 65 regulations.



The ThermoGrip icon indicates products with our exclusive red backing which ends mat curling and also provides an anti-microbial solution.



Products tested and certified



Products with recycled content

CONTENTS

PRODUCT NAME	ITEM#	PAGE
3 MAT SYSTEM		2
Jasper	#175	4
Oxford Elite	#265	4
Dust Star	#350	4
Fore-Runner	#155	5
Cross-Over	#255	5
Allure	#376	5
Outdoor Mats		6
Sani-Tred	#667	7
Spaghetti Mat	#130-#131	7
Mat-A-Dor	#100	8
Crown-Tred	#145	8
Indoor Mats		9
Marathon	#228	10
Dura-Dot	#202	10
Chevron	#230	11
Needle-Rib	#235	11
Rely-On	#315	12
Wonder-Pro	#310	12
Super Soaker	#250	13
Enviro-Tred	#272	13
Logo/Specialty Mats		14
Super Berber Inlay	#065	15
Spaghetti Image Mat	#075-#075	15
Pro-Tekt Printed	#070	16
Super Soaker Inlay	#025	16
Crown Tred Printed	#040	17
Flocked Mats	#010	18
Embossed Anti-Fatigue	#050	18
HD Jet Print	#035	19
Jet Print	#030	19
Specialty Mats		20
Stat-Zap Carpet Top	#900	20
Walk-N-Clean	#995	20
Disinfectant Boot Bath	#102	20
Nirvana	#537	20
Command Shield	#982	20
Accessories		21
Rug-Hugger Backing		21
Mat-Lock Backing		21
Velcro Backing Strips		21
Nosing		21
Tack-Tape		21
Ergonomic Mats		22
Workers Delight Slate	#546-#556	23
Workers Delight Spiffy	#531-#541	23
Cushion Step Spiffy Vinyl	#511	24
Workers Delight Deck Plate	#530-540-550	24
Wear-Bond Comfort-King	#560-#562	25
Alleviator Comfort-King	#465	25
Comfort-King	#440-#445	26
Industrial Deck Plate	#500-#505	26
Safety-Step Solid-Top	#685	27
Yoga-Flex	#695	27
Wear-Bond Tuff-Spun	#520-#522	28
Tuff-Spun Foot-Lover	#406/#407	28
	400/#410/#411/#414/#430/#431/#432	
Food Service Mats		29
Safe Flow Plus	#648	30
Imperial Mat	#786	30
Safety-Step Perforated	#680-#681	31
Safewalk-Light	#645-#646	31
Safewalk	#630-#635-#636	
Runners		33
Pro-Tekt	#820	32
Deck-Plate	#850	32
Sta-Kleen	#800	32
Corrugated Rubber	#840	32
Gym-Dandy	#871	32
Care and Maintenance/Warranty		33

3 MAT SYSTEM

1 SCRAPER

- Scrapes heavy debris
- Your first defense against mud, dirt, and snow
- Choose matting with a non-absorbent scraping surface, or open weave backing, to allow moisture to drain naturally

2 SCRAPER/WIPER

- Cleans & absorbs moisture
- The workhorse of the system
- Designed to remove and contain soil, waste particles and moisture at the entrance

3 WIPER

- Absorbs moisture & dries
- Removes remaining moisture, fine fragments and dust from footwear upon entrance to the interior of building



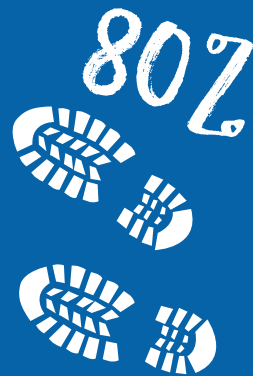
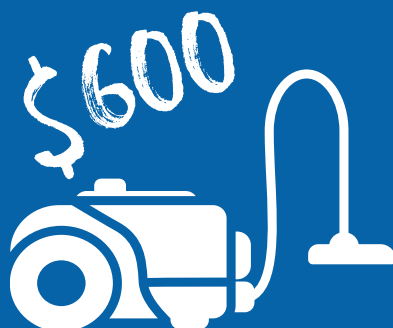
Jasper
Oxford Elite
Dust Star



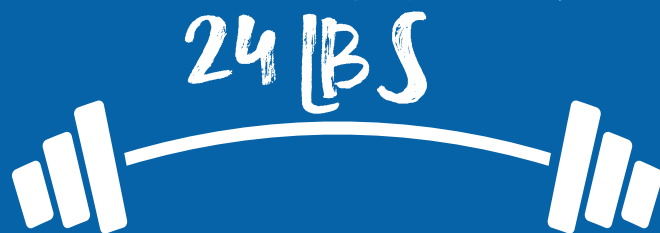
The Real Dirt

Amount of dirt in a building that is tracked in on feet

Estimated cost of removing a single pound of dirt from a modern building



The amount of dirt 1,000 people can track into a building in just 20 days



\$1 spent keeping soil out of a building will save **\$10** in removing the soil once it's inside

Entrance matting should cover **15 to 18** feet of an entrance, preventing **80-90 %** of dirt from coming into the facility



#175 Jasper

SCRAPER | MEDIUM TRAFFIC

**FEATURES**

- Cut pile mat made of strong nylon scraping fibers
- Slim profile facilitates the opening of doors
- For outdoor/indoor entrance and lobby with medium traffic
- ThermoFlex vinyl backing provides floor protection against the elements

SPECIFICATIONS

Standard Sizes: 2' x 3' 3' x 4' 3' x 5' 3' x 6' 3' x 10'
 4' x 6' 4' x 10' 6' x 10'
 Roll Sizes: 3' x 30' 4' x 30' 6' x 30'

Total Customization: 3' 4' 6' widths
 Finish: ThermoFlex vinyl backing
 Thickness: 5/16"

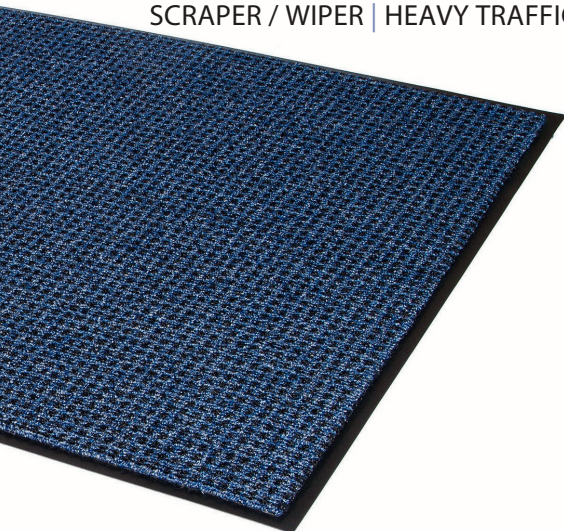
WARRANTY
 Total Confidence



Black

#265 Oxford Elite

SCRAPER / WIPER | HEAVY TRAFFIC

**FEATURES**

- Mix of abrasive and sturdy olefin fibers for well balanced scraping and wiping performance
- Heavyweight attractive surface hides dirt and keeps entrance clean
- ThermoGrip backing offers extreme durability and superior floor protection

SPECIFICATIONS

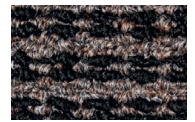
Standard Sizes: 2' x 3' 3' x 4' 3' x 5' 3' x 6' 3' x 8'
 3' x 10' 4' x 6' 4' x 8' 4' x 10' 6' x 10'
 Roll Sizes: 3' x 60' 4' x 60' 6' x 60'

Total Customization: Up to 11'9" x 60'
 Finish: ThermoGrip backing
 Thickness: 7/16"

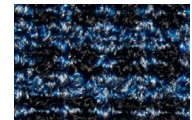
WARRANTY
 Total Confidence



Black/Gray



Black/Brown



Black/Blue

#350 Dust Star

WIPER | HEAVY TRAFFIC

**FEATURES**

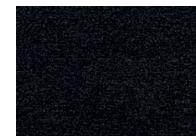
- Unique microfiber with incredible dust and moisture retention properties
- Positively charged microfibers will attract hair, lint, dust and keep them from polluting the air
- Holds close to three times more liquid than standard wiper mats
- ThermoGrip backing offers extreme durability and superior floor protection

SPECIFICATIONS

Standard Sizes: 2' x 3' 3' x 4' 3' x 5' 3' x 6'
 3' x 8' 3' x 10' 4' x 6' 4' x 8' 4' x 10' 6' x 10'
 Roll Sizes: 3' x 60' 4' x 60' 6' x 60'

Total Customization: Up to 11'9" x 60'
 Finish: Thermo-Grip backing
 Thickness: 1/2"

WARRANTY
 Total Confidence



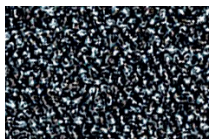
Charcoal



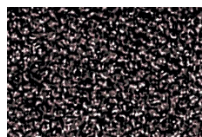
Two-tone color mat for a better camouflage of particles.

#155 Fore-Runner

SCRAPER | HEAVY TRAFFIC



Gray



Brown

FEATURES

- Attractive two tone colors and resilient construction resist fading
- Non absorbent, abrasive surface scrapes soil and debris from footwear
- ThermoFlex vinyl backing provides floor protection against the elements

SPECIFICATIONS

Standard Sizes: 2' x 3' 3' x 4' 3' x 5' 3' x 10'
4' x 6' 4' x 10' 6' x 10'
Roll Sizes: 3' x 60' 4' x 60' 6' x 60'

Total Customization: 3', 4', 6' widths
Finish: ThermoFlex vinyl backing/borders
Thickness: 5/16"

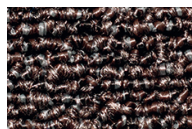
WARRANTY

Total Confidence



#255 Cross-Over

SCRAPER / WIPER | MEDIUM TRAFFIC



Brown



Gray

FEATURES

- Attractive two tone colors and resilient construction resist fading and crushing
- Abrasive loop pile surface scrapes debris and moisture from footwear while sturdy olefin fibers start the drying process
- ThermoFlex vinyl backing provides floor protection against the elements

SPECIFICATIONS

Standard Sizes: 2' x 3' 3' x 4' 3' x 5' 3' x 6' 3' x 8'
3' x 10' 4' x 6' 4' x 8' 4' x 10' 6' x 10'
Roll Sizes: 3' x 60' 4' x 60' 6' x 60'

Total Customization: 3', 4', 6' widths
Finish: ThermoFlex vinyl backing/borders
Thickness: 5/16"

WARRANTY

Total Confidence



#376 Allure

WIPER | HEAVY TRAFFIC



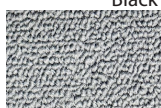
Brown



Black



Burgundy



Gray



Blue

FEATURES

- Attractive colors and resilient construction resist fading and crushing
- Dense, fast drying loop pile fibers absorb heavy moisture and trap fine dirt particles
- ThermoGrip black backing provides floor protection against the elements

SPECIFICATIONS

Standard Sizes: 2' x 3' 2' x 6' 2' x 8' 3' x 4' 3' x 5' 3' x 6' 3' x 8'
3' x 10' 3' x 12' 3' x 16' 4' x 6' 4' x 8' 4' x 12' 6' x 8'
Roll Sizes: 3' x 60' 4' x 60' 6' x 60'

Total Customization: 3', 4', 6' widths
Finish: ThermoGrip backing/borders
Thickness: 5/16"

WARRANTY

Total Confidence



Outdoor Matting

Preserve Your Interior Flooring: With the Right Entry Matting

Dirt and other debris can cause costly damage to interior flooring, both hard surfaces and carpets. Additionally, inadequate entry matting can have a negative impact on indoor air quality. An outdoor mat is the first line of defense against dirt and debris, and an effective way to manage it.

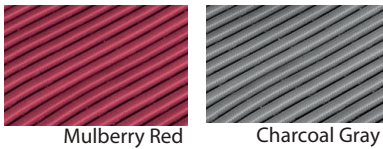
When selecting an outdoor mat, consider the following:

- Opt for a mat with an aggressive surface that is designed for vigorous scraping.
- High-quality outdoor mats can trap and hold up to three pounds of dirt per square foot, ultimately reducing overall building cleaning costs.
- Deep-pile products can keep dirt from entering the building.
- Choose colors that effectively conceal dirt, sand, salt, and other debris.



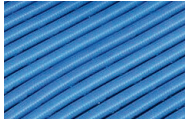
#667 Sani-Tred

WET AREA | HEAVY TRAFFIC



Mulberry Red

Charcoal Gray



Ocean Blue



Top view

Slip-resistant, embossed surface



3/8" Thick

FEATURES

- Open grid construction made from non-porous extruded PVC
- Sanitized anti-bacterial and anti-fungal additives
- Use for health clubs, showers, spas, swimming pools, saunas and Jacuzzis or where barefoot traffic is extensive

SPECIFICATIONS

Roll Sizes: 2' x 40' 3' x 40' 4' x 40'

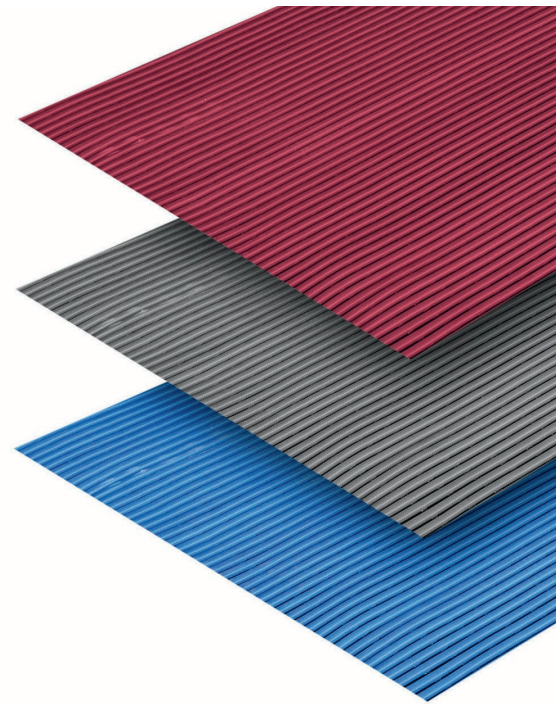
Total Customization: Unavailable

Thickness: 3/8"

Colors: Charcoal, Mulberry Red, Ocean Blue

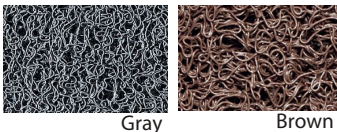
WARRANTY

Total Confidence



#130/131 Spaghetti Mat

SCRAPER | MEDIUM TRAFFIC



Gray

Brown



Backed only

Black



3/8" Thick profile



#130: with backing

#131: unbacked

FEATURES

- PVC loop structure with vinyl backing
- Dries quickly, resists mildew and fading
- Also available without backing to facilitate the flow of water

SPECIFICATIONS

Standard Sizes: 3' x 5' 4' x 6'

Roll Sizes: 3' x 20' 4' x 20'

Total Customization: Up to 4' wide

Can be seamed.

Finish:

#130: with backing - Gray, Brown, Black

#131: unbacked - Gray, Brown

Thickness: 3/8"

(offered with or without crimped or applied vinyl nosing)

(No borders)

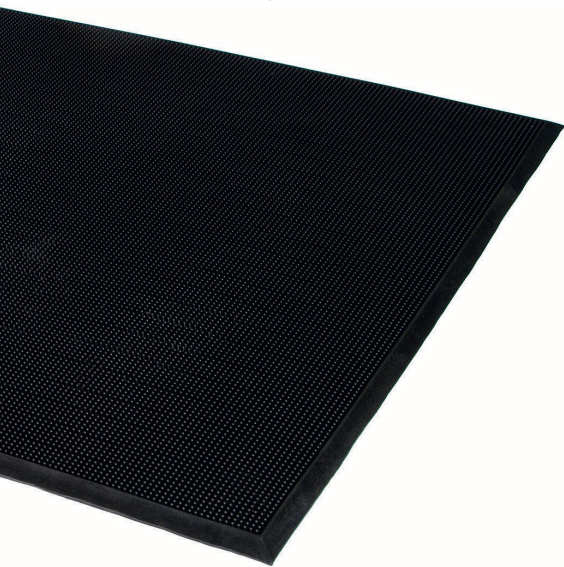
WARRANTY

Total Confidence



#100 Mat-A-Dor

SCRAPER | HEAVY TRAFFIC



FEATURES

- Remains flexible and maintains performance in the coldest temperatures
- Contains 60% more "fingers" than standard fingertip mats, for outstanding scraping action
- Beveled edge reservoir retains liquid
- 30% recycle content

SPECIFICATIONS

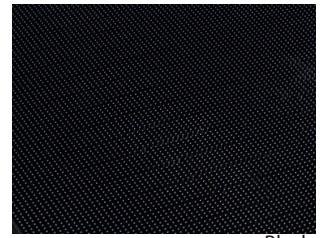
Standard Sizes: 24" x 32" 32" x 39" 36" x 60" 36" x 72"

Total Customization: Unavailable

Finish: Rubber corrugated back and molded edging

Thickness: 5/8"

WARRANTY
Total Confidence



Black

Rubber mat with corrugated back and molded edging



5/8" Thick

#145 Crown-Tred

SCRAPER | HEAVY TRAFFIC



FEATURES

- Rubber made to withstand any outside weather usage
- Affordable solution for small commercial location
- Raised pattern scrapes debris off of shoes
- 50% recycled content

SPECIFICATIONS

Standard Sizes: 3' x 5' 3' x 10' 4' x 6'

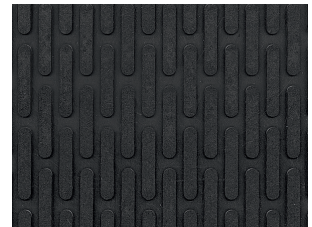
Roll Sizes: Unavailable

Total Customization: Unavailable

Finish: Beveled rubber borders

Thickness: 1/4"

WARRANTY
Total Confidence



Black



3 Mat Sizes

Indoor Matting

Scraper/Wiper mats are often viewed as the best overall matting available. Ideally used to transition between rugged external matting and internal finishing mats, they scrape off light soils and absorb and retain water and moisture. Scraper/Wipers are often used for internal entryways – between external and internal doors, or as the first of two internal entry mats.

Wiper mats or “finishing” mats are best thought of as the final step in managing dirt and debris at the point of entry. The surface fibers pull off lingering dirt and dust, while absorbing and retaining water and wetness. Preventing the moisture from getting onto floors keeps them dry and safe.

Wiper mats are also often used to support cleanliness throughout the building, such as outside of restrooms or kitchen and cafeteria entrances.



#228 Marathon

SCRAPER / WIPER | HEAVY TRAFFIC



FEATURES

- Heavy duty needle punch surface for outstanding scraping and water retention
- Reinforced latex coated pattern allows for increased dirt and moisture removal
- ThermoGrip backing offers extreme durability and superior floor protection

SPECIFICATIONS

Standard Sizes: 2' x 3' 3' x 4' 3' x 5' 3' x 6' 3' x 8' 3' x 10' 4' x 6' 4' x 8' 4' x 10' 6' x 10'

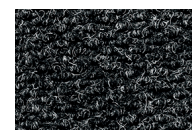
Roll Sizes: 3' x 60' 4' x 60' 6' x 60'

Total Customization: Available up to 11'9" x 60'

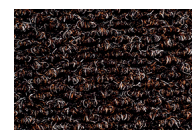
Finish: ThermoGrip backing

Thickness: 1/2"

WARRANTY
Total Confidence



Anthracite



Dark Brown



Blue/Gray

#202 Dura-Dot

SCRAPER / WIPER | HEAVY TRAFFIC



FEATURES

- Stain UV and abrasion resistant berber surface for high performance applications
- Anti-skid and moisture resistant gel foam backing
- Can also be used outdoors, under cover (not recommended for applications where storage, rolling and unrolling is required)

SPECIFICATIONS

Standard Sizes: 3 x 5' 3' x 10' 4' x 6'

Roll Sizes: 3' x 82' 4' x 82' 6' x 82'

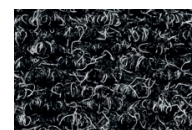
(rolls do not have beveled borders)

Total Customization: Up to 13'1" x 82'

Thickness: 3/8"

(Mats have sewn and glued picture frame nosing)

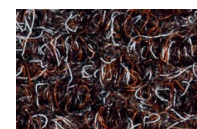
WARRANTY
Total Confidence



Anthracite



Blue/Gray



Dark Brown

#230 Chevron

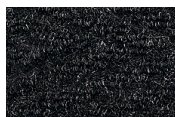
SCRAPER / WIPER | MEDIUM TRAFFIC



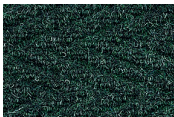
Brown



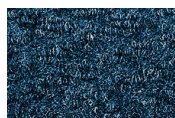
Burgundy



Charcoal



Forest Green



Steel Blue

FEATURES

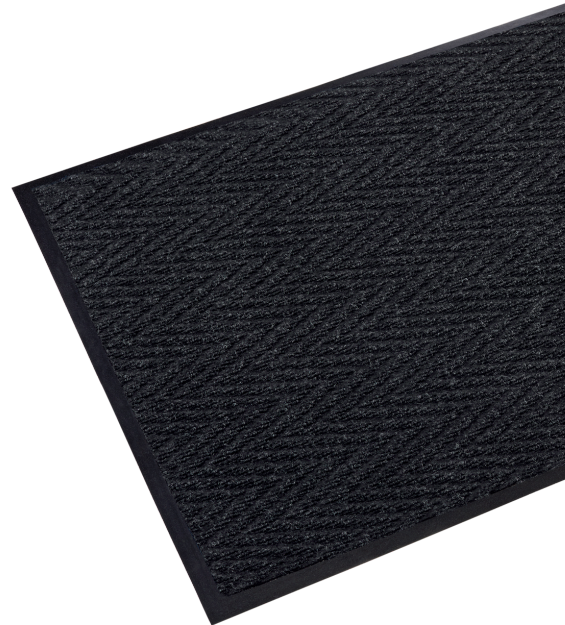
- Vivid, nonfading colors that resist fading
- ThermoFlex vinyl backing offers superior floor protection
- Surface made from 50% P.E.T. recycled fibers
- ThermoFlex vinyl backing provides floor protection against the elements

SPECIFICATIONS

Standard Sizes: 2' x 3' 3' x 4' 3' x 5' 3' x 6'
3' x 8' 3' x 10' 4' x 6' 4' x 8' 4' x 10' 6' x 10'
Roll Sizes: 3' x 60' 4' x 60' 6' x 60'

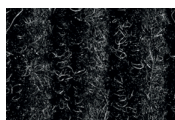
Total Customization: 3', 4', 6' widths
Finish: ThermoFlex vinyl backing/borders
Thickness: 5/16"

WARRANTY
Total Confidence

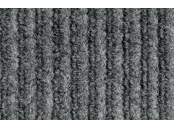


#235 Needle-Rib

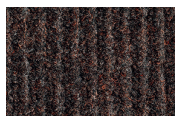
SCRAPER / WIPER | LIGHT TRAFFIC



Charcoal



Gray



Brown



Blue

FEATURES

- Unilateral ribbed pattern on vinyl backing that traps moisture and protects floors
- Quick drying and fade resistant
- Surface made from 50% P.E.T. recycled fiber
- ThermoFlex vinyl backing provides floor protection against the elements

SPECIFICATIONS

Standard Sizes: 2' x 3' 3' x 4' 3' x 5' 3' x 6' 3' x 8'
3' x 10' 4' x 6' 4' x 8' 4' x 10' 6' x 10'
Roll Sizes: 3' x 60' 4' x 60' 6' x 60'

Total Customization: 3', 4', 6' widths
Finish: Vinyl backing and borders
Thickness: 5/16"

WARRANTY
Total Confidence



#315 Rely-On Olefin

WIPER | LIGHT TRAFFIC

**FEATURES**

- Economical olefin wiper mat available in a wide array of colors to match most décors
- Small profile fits under most doors
- ThermoFlex vinyl backing provides floor protection against the elements

SPECIFICATIONS

Standard Sizes: 2' x 3' 3' x 4' 3' x 5' 3' x 6' 3' x 8'

3' x 10' 4' x 6' 4' x 8' 4' x 10' 6' x 10'

Roll Sizes: 3' x 60' 4' x 60' 6' x 60'

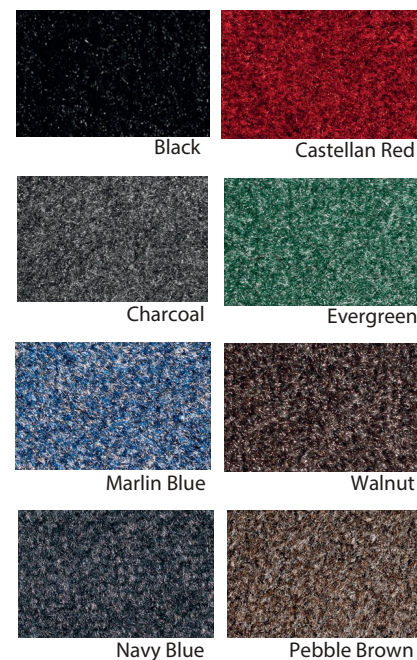
Total Customization: 3', 4', 6' widths

Finish: Vinyl backing and borders

Thickness: 3/8"

WARRANTY

Total Confidence

**#310 Wonder-Pro**

WIPER | MEDIUM TRAFFIC

**FEATURES**

- Retains 60% more liquid and fine dirt than standard Olefin mats
- Wide selection of colors are resistant to fading
- ThermoFlex vinyl backing provides floor protection against the elements

SPECIFICATIONS

Standard Sizes: 2' x 3' 3' x 4' 3' x 5' 3' x 6' 3' x 8'

3' x 10'

4' x 6' 4' x 8' 4' x 10' 6' x 10'

Roll Sizes: 3' x 60' 4' x 60' 6' x 60'

Total Customization: Up to 11'9" x 60'

Can be seamed.

Finish: ThermoFlex vinyl backing/borders

Thickness: 7/16"

WARRANTY

Total Confidence

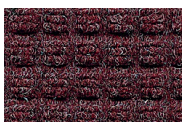


#250 Super-Soaker

SCRAPER / WIPER | MEDIUM TRAFFIC



Blue



Burgundy



Forest Green



Charcoal



Dark Brown

FEATURES

- Non-skid nib backing will effectively grip mat to the floor made with 20% recycled content
- Crush-proof waffle pattern will scrape shoes and hold dirt beneath shoe level, while wiping moisture
- 100% solution dyed polypropylene surface won't fade or rot

SPECIFICATIONS

Standard Sizes: 2' x 3' 3' x 4' 3' x 5' 3' x 10' 4' x 6' 4' x 8' 4' x 10' 6' x 10'

Total Customization: Contact customer service

Finish: #250 Rubber borders

Thickness: 3/8"

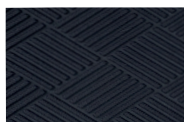
WARRANTY

Total Confidence



#272 Enviro-Tred

SCRAPER / WIPER | HEAVY TRAFFIC



Black



Charcoal



Rubber Borders and Backing

FEATURES

- Made with recycled PET
- Durable needle punch surface
- Attractive diamond pattern
- Great for heavy traffic areas
- Rubber backing and borders
- NFSI Certified

SPECIFICATIONS

Standard Sizes: 3' x 5' 4' x 6'

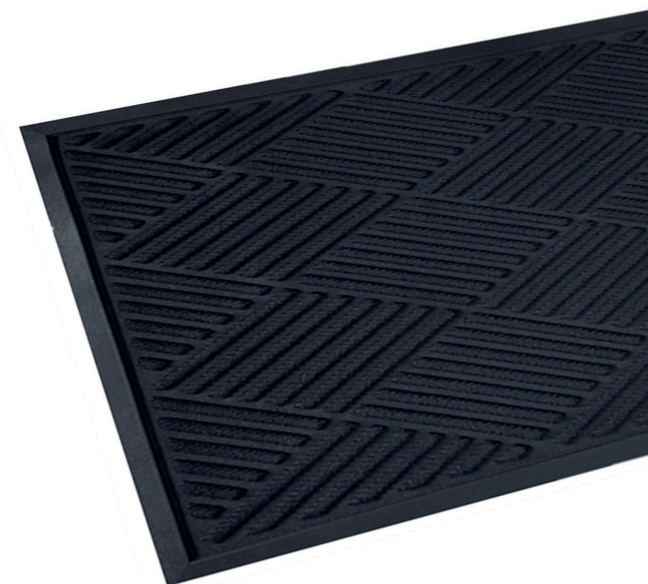
Total Customization: Unavailable

Finish: Rubber borders

Thickness: 5/16"

WARRANTY

Total Confidence



Logo/Specialty Mats & Accessories

Adding a logo to commercial matting can be an effective tool for enhancing the appearance and professionalism of any business or institutional environment. Logo mats can be used as highly visible entrance mats, a centerpiece for a lobby or reception areas, or a way to build an organization's image wherever internal matting is utilized.

Crown Matting Technologies provides a number of options for customers looking to add a logo to their overall matting programs. From flocked mats and Graphic Inlays to HD Jet-Print and Crown-Tred Printed Mats, Crown can best match your need with the most appropriate matting application. In addition to logo mats, Crown offers an extensive line of specialty mats and accessories to meet even the most complex or unique matting challenges.



Logo Mats

Welcome your audience with a touch of elegance and uniqueness by utilizing custom image matting. Crown's promotional logo mats not only serve as a personalized greeting but also reinforce brand recognition.

To learn more about how our customer service department can assist you, please contact us.

#065 Super Berber Inlay

SCRAPER / WIPER | HEAVY TRAFFIC

FEATURES

- 100% Solution Dyed Polypropylene Berber, UV, and abrasion resistant
- Maximum Durability All weather rubber backing

SPECIFICATIONS

Standard Sizes: 2'x3' 3'x4' 3'x5' 3'x6' 3'x8' 3'x10' 3'x12' 4'x6'

4' x 8' 4' x 10' 4' x 12' 4'x14'

Roll Sizes: 4'x16' 4'x18' 4'x20' 6' x5' 6'x6' 6'x8' 6'x10' 6'x12' 6' x 20'

Total Customization: from 2' x1' up to 13' 2" x100

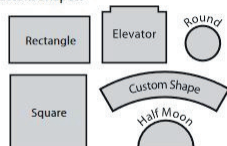
Colors: Up to 40 Available Colors. No PMS Color Match available.

Lead Time: 2-3 weeks after signed proof

Contact Customer Service



Custom Shapes:



WARRANTY
Total Confidence



#075#076 Spaghetti Image Mat

SCRAPER | LIGHT TRAFFIC

FEATURES

- PVC loop structure with vinyl backing
- Dries quickly and resists mildew and fading
- Available without backing to facilitate the flow of water Easy to clean

SPECIFICATIONS

Standard Sizes: 2' x 3' , 3' x 4' , 3' x 5' , 3' x 10' , 4' x 6'

4' x 8' , 4' x 10' , 4' x 12' , 4' x 16' , 4' x 20

Roll Sizes: Unavailable

Total Customization: 4'widths; up to 8'widths w/ one seam

Lead times: 2-3 weeks after signed proof

Colors: Choose from 20 vibrant colors for your mat and logo.

Contact Customer Service

WARRANTY
Total Confidence



TURF GREEN 1008	GREEN GRASS 1012	LIME GREEN 1021	BLACK 1003
CHAR COAL 1010	GRAY 1009	LIGHT GRAY 1011	NAVY 1004
ROYAL BLUE 1013	MARINE BLUE 1017	PURPLE 1019	PINK 1020
BROWN 1016	CRIMSON 1015	RED 1005	ORANGE 1007
SAND 1014	YELLOW 1002	BEIGE 1006	WHITE 1001



Spaghetti Image Mat

Super Soaker Inlay Mats

Crown's Premium Quality Super-Soaker Inlay mats are durable, absorbent, and non-slip, keeping floors clean and safe. They enhance entryways, protect flooring, and provide a secure surface for customers and employees. For medium traffic areas these mats blend functionality and style for a lasting impression.

#070 Pro-Tekt Printed LIGHT TRAFFIC

FEATURES

- Digitally printed on our pebbled surface Pro-Tekt Mat
- Slip Resistant
- Easy to clean
- Lightweight and flexible with a low profile

SPECIFICATIONS

Standard Sizes: 2' x 3'

Roll Sizes: Unavailable

50 piece minimum quantity, no set up charge

Finish: Vinyl foam with pebble surface

Design Colors: Unlimited

Mat Color: Black

Color matching available

Lead Time: 2-3 weeks after signed proof

Contact Customer Service

WARRANTY
Total Confidence



#025 Super-Soaker Inlay SCRAPER / WIPER | MEDIUM TRAFFIC

FEATURES

- Super-Soaker Inlay is a precision cut of your logo molded to a rubber cleated backing
- Molded nitrile rubber backing helps to reduce mat movement
- Great for indoor and covered outdoor placement
- No minimum quantity, no set up charge

SPECIFICATIONS

Standard Sizes: 2' x 3' 3' x 4' 3' x 5' 3' x 10' 3' x 12' 3' x 15' 3' x 20' 4' x 6' 4' x 8' 4' x 10' 4' x 12' 4' x 14' 4' x 16' 4' x 20' 6' x 5' 6' x 6' x 8' 6' x 10' 6' x 12' 6' x 14' 6' x 16' 6' x 18' 6' x 20'

Roll Sizes: Unavailable

Lead Time: 2-3 weeks after signed proof

Custom Sizes: Unavailable

Finish: Rubber edging Fabric Edging Rubber cleated backing

Colors: Base colors: Med. Brown, Dark Brown, Med Gray, Charcoal, Evergreen, Navy, Med Blue, Bluestone, Red/Black

Logo Colors: White, Yellow, Gold, Purple, Orange, Solid Red, Light Green, Aquamarine

WARRANTY
Total Confidence



Super Soaker Inlay Mat

Crown-Tred Printed Mats

Utilized in high-traffic locations for both indoor and outdoor purposes, the Crown Tred Printed nitrile rubber scraper mat is designed to endure all weather conditions and is UV protected. The image is printed digitally on a thermoplastic material and then molded onto the mat, creating vibrant color tones and variations. The permanent bonding process ensures a lasting impression.

This innovative Crown Tred Printed nitrile rubber scraper mat not only provides exceptional durability but also adds a touch of style to any space it graces. Its ability to withstand various weather conditions makes it a reliable choice for any entrance, ensuring cleanliness and safety for all who pass over it. The vivid colors and intricate designs that are achieved through the digital printing process make it a unique and eye-catching addition to any environment. With its long-lasting quality and aesthetic appeal, Crown Tred Printed mat is the perfect blend of functionality and creativity.

#040 Crown-Tred Printed

SCRAPER | MEDIUM TRAFFIC

FEATURES

- First line of defense: designed for outdoors (UV resistant) and between entrance door applications
- Excellent color tones and shades with unparalleled detail and clarity
- Durable ¼" nitrile rubber construction.
- Oil, grease and chemical resistant
- No minimum quantity, no set up charge

SPECIFICATIONS

Standard Sizes: 2' 6" x 3' 3' x 5' 3' x 10' 4' x 6' 4' x 8' 6' x 6' x 8'

Roll Sizes: Unavailable

Total Customization: Unavailable

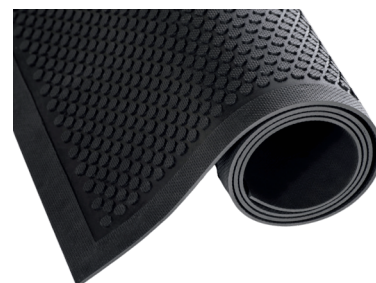
Finish: Nitrile Rubber blend

Lead Time: 2-3 weeks after signed proof

Mat Color Black Only



Extended logo colors available



MAT SURFACE

WARRANTY
Total Confidence



Crown Tred Printed Mat

Image matting allows you to personalize your space and enhance safety.

With that in mind, we developed custom image matting solutions unique to fit your environment.

Flocked Mats

Used for moderate to low traffic areas for indoor use only. A logo is produced on our Olefin Mat using electrical statically charged nylons fibers creating a strong visual of your image and message. The imprint will be slightly raised and able to apply up to 4 colors.

#010 Flocked Mat

WIPER | LIGHT TRAFFIC

FEATURES

- 100% olefin mat with vinyl backing absorbs moisture, traps fine dust and protects floors
- Flocked process; nylon fibers electrostatically charged and applied to the carpet surface with adhesive
- Available on different carpet quality (Rely-On light usage, Eco-Step 100% recycled surface - medium usage)
- More than 20 PMS contrasting flocking colors available - should state

"SPECIAL COLORS ON REQUEST - SURCHARGE APPLIES, CONTACT CUSTOMER SERVICE"

SPECIFICATIONS

Standard Sizes: 2' x 3' 3' x 4' 3' x 5'
3' x 6' 4' x 6'

Roll Sizes: Unavailable

Total Customization: Available; contact customer service

Finish: Contrasting flocking colors

Lead Time: 2-3 weeks after signed proof

Colors: Mat Colors:

Black, Burgundy, Castellan Red, Charcoal, Evergreen, Marlin Blue, Mid-Gray, Navy Blue, Pebble Brown, Walnut, Solid Red, Solid Blue, Walnut*, Charcoal*, Granite*, Midnight Blue*

WARRANTY

Total Confidence



#050 Embossed Anti-Fatigue Mat

ERGONOMIC | DRY AREAS

FEATURES

- Stimulates blood circulation and reduces muscular pain caused by standing for long periods of time
- High quality embossed image technology for maximum durability
- Set up fee required/Choose up to 3 logo colors. Min. order 50 mats
- Also available with anti-microbial additive, Min. order 50 Mats. Contact customer service

SPECIFICATIONS

Standard Sizes: 2' x 3' 3' x 4' 3' x 5' 3' x 10'

Roll sizes: Unavailable

Total Customization: Available; call customer service

Finish:

Style 1 - Embossed no color

Style 2 - Embossed with vinyl

Style 4 - Digital file print contact customer service

Colors:

3/8" Tuff Spun - Black, Gray

3/8" Comfort King - Black, Royal Blue, Steel Gray

Lead Time: 2-3 weeks after signed proof

WARRANTY

Total Confidence



Flocked Mat

HD Jet Print

Utilized in high-traffic indoor areas, this rubber mat features High Definition Digital Ink Printing, providing vibrant color tones and shading for a photo-quality appearance. The premium rubber backing ensures durability, with a selection of over 600 available colors.

#035 HD Jet-Print

WIPER | HEAVY TRAFFIC

FEATURES

- Unlimited color combinations available to create your personalized message or logo
- High-Definition logo printed nylon mat offers up to 10 times the definition of a regular printed mat.
- Retains 50% more liquid and fine dirt than most standard Jet-Print
- No minimum quantity, no set-up charge

SPECIFICATIONS

Standard Sizes: 2' x 3' 3' x 4' 3' x 5' 3' x 10' 4' x 6'
4' x 8' 5' x 8' 5' x 10' 6' x 10' 6' x 12'

Roll Sizes: Unavailable

Total Customization: Length/Width cuts up to 6'x40'

Finish: Rubber backing and borders, Excellent digital reproduction Lead Time: 2-3 weeks after signed proof

Colors: Up to 150 available colors

WARRANTY
Total Confidence



#030 Jet-Print

WIPER | HEAVY TRAFFIC

FEATURES

- Unlimited color combinations available to create your personalized message or logo.
- Printed nylon surface
- No minimum quantity, no set-up charge

SPECIFICATIONS

Standard Sizes: 2' x 3' 3' x 4' 3' x 5' 3' x 10' 4' x 6'
4' x 8' 5' x 8' 5' x 10' 6' x 10' 6' x 12'

Roll Sizes: Unavailable

Total Customization: Length/Width cuts up to 6'x40'

Finish: Rubber cleated backing, Digital reproduction

Colors: Black, Burgundy, Moss Green, Forest Green, Emerald Green, Dark Gold, Chocolate, Light Blue, Gold, Dark Gray, White Silver, Suede, Navy, Orange, Pearl White, Red, Royal Blue, Silver, Sandalwood, Yellow, Hot Pink - Up to 300 available colors

WARRANTY
Total Confidence



Jet Print Mat

#900 Stat-Zap Carpet Top



FEATURES

- Attractive conductive loop carpet with a resistivity of 10^{10} ohms per square
- Stock mats include ground cord, which can be connected to an electrical outlet

SPECIFICATIONS

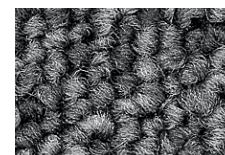
Standard Sizes: 2' x 3' 3' x 4' 3' x 5' 3' x 10' 4' x 6' 4' x 8' 4' x 10'

Roll Sizes: 3' x 60' 4' x 60'

Total Customization: Custom cuts need one grounding cord per (sold separately)

10' Finish: Vinyl backing and borders with anti-slip Rug-Hugger

WARRANTY Total Confidence 

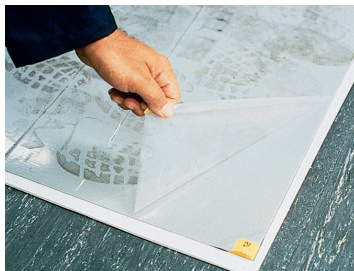


Pewter



Ground cord

#995 Walk-N-Clean



FEATURES

- 60 shoe cleaning tacky sheets treated with an anti-microbial agent protects against growth of bacteria, mold and mildew
- Non-toxic, refillable frame with a slip resistant backing
- When top layer is dirty, simply peel and discard

SPECIFICATIONS

Standard Sizes: Single Tray: 31 1/2" x 25 1/2" Double Tray: 31 1/2" x 51"

Refill 30" x 24" (case of 4 replacement pads)

Finish: Nonskid polyethylene backing - 50% recycled content

WARRANTY Total Confidence 



White



Gray

#102 Disinfectant Boot Bath



FEATURES

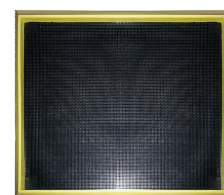
- 2" raised wall to hold any USDA accepted disinfectant sanitizer or liquid for hygienic cleaning
- Aggressive rubber fingertips scrape bottom of boots reducing the risk of cross contamination
- Yellow raised borders for high visibility and increased safety

SPECIFICATIONS

Standard Sizes: 32" x 39"

Total Customization: Unavailable

WARRANTY Total Confidence 



Black with Yellow Borders

#537 Nirvana



FEATURES

- Raised, crush resistant berber-style surface that scrapes dirt and removes moisture efficiently.
- Highly energized Zedlan sponge with anti-microbial additives that combined softness and resilience for exceptional ergonomic value. Durable Anti-Fatigue mat

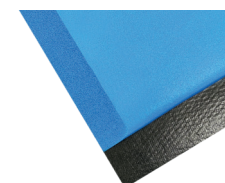
SPECIFICATIONS

Standard Sizes: 3' x 2' 3' x 5'

Thickness: 1/2"

Total Customization: Unavailable

WARRANTY Total Confidence 



Zedlan foam backing
Color: Charcoal

#982 Command Shield



FEATURES

- Stays in place for an average of 4 months depending on foot traffic
- Peels up easily with no residue
- Anti-Microbial
- Absorbs water, oil, and grease
- Easy to clean
- Sticks to most flooring
- Reduces slips, trips, and falls
- Allows for customer customization
- ADA Compliant

Standard Roll Sizes: 3'x100'

WARRANTY Total Confidence 



Adhesive Backing
Color: Charcoal

Rug-Hugger Backing

ACCESSORY

FEATURES / SPECIFICATIONS

- Anti-slip backing to reduce mat movement on carpets
- Can be factory applied to most vinyl backed products



Mat-Lock Backing

ACCESSORY

FEATURES / SPECIFICATIONS

- Slip-resistant backing to secure mat to hard surfaces such as wood, ceramic tile, marble, linoleum, etc.
- Can be factory applied to most vinyl backed products

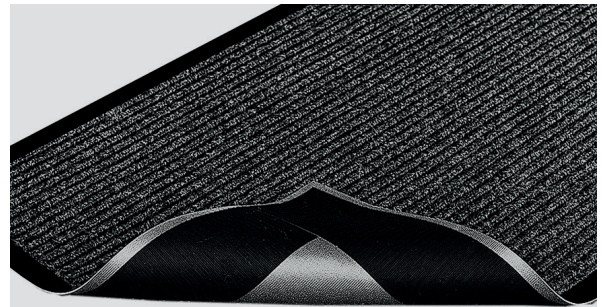


Velcro Backing Strips

ACCESSORY

FEATURES / SPECIFICATIONS

- Self-applied adhesive Velcro strips to secure mat to loop-pile carpeting
- Can be easily applied to most vinyl backed products
- Available in 4" wide strips cut to length or by the 75' roll

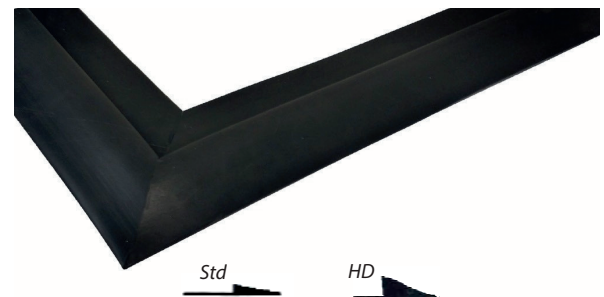


Nosing

ACCESSORY

FEATURES / SPECIFICATIONS

- Loose edging to be applied to ends of your mat
- Available in standard rolls of ¾" x 100' or heavy-duty rolls of 1 ½" x 50'
- Custom lengths available



Tack-Tape

ACCESSORY

FEATURES / SPECIFICATIONS

- Specially designed double-sided tape for securing foam products and vinyl backed carpet mats to floors
- Roll dimensions, 4" x 250'



Ergonomic Mats

Crown's ergonomic mats are designed to alleviate leg, foot, and lower back fatigue and discomfort, while also enhancing slip resistance, wet-area drainage, and overall worker safety.

Strong. Resilient. Safe.

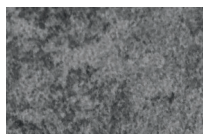
Three critical matting features that can dramatically influence the success of your workforce and your business. Zedlan Foam was developed with these workplace imperatives in mind.

- Strong - Zedlan Foam outwears similar products by nearly 3-to-1.
- Resilient - Zedlan Foam has three times the resilience of traditional ergonomic products.
- Safe - combined with our exclusive slip resistant technology, Zedlan Foam offers superior traction compared to standard foam products
- Zedlan Foam.
Just one more way we support our customers by developing industry leading products that support their workforce

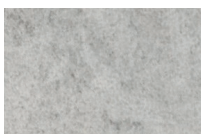


#536/546 Workers-Delight Slate

DRY AREA



Dark Gray



Light Gray



Zedlan foam

FEATURES

- Our new modern design combined with our patented Zedlan Foam creates the ultimate combination of form and function
- UV-Cured PVC top surface facilitates ease of maintenance
- New slip resistant coating on underside of mat ensures steadiness and control on smooth surfaces
- Use for cashier stations, pharmacies, medical/dental offices, laboratories, pick modules, ware housing

SPECIFICATIONS

Standard Sizes: 2' x 3' 3' x 5' 3' x 12'

Roll Sizes: 2' x 60' 3' x 60' 4' x 60'

Total Customization: 2', 3', 4' widths

Thickness: #536 – Standard #546 - Supreme

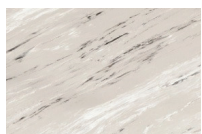
WARRANTY

Total Confidence

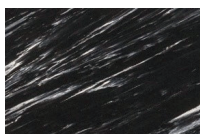


#531/#541 Workers-Delight Spiffy Vinyl

DRY AREA



French Gray



Black



Zedlan foam

FEATURES

- Puncture resistant PVC top surface allows for better durability and stability
- Patented Zedlan foam combined with our fusion technology creates an unmatched level of durability and comfort
- New slip-resistant coating on underside of mat ensures steadiness and control on smooth surfaces
- Use for cashier stations, pharmacies, medical/dental offices, laboratories, pick modules, warehousing
- 25% recycled content

SPECIFICATIONS

Standard Sizes: 2' x 3' 3' x 5' 3' x 12'

Roll Sizes: 2' x 60' 3' x 60' 4' x 60'

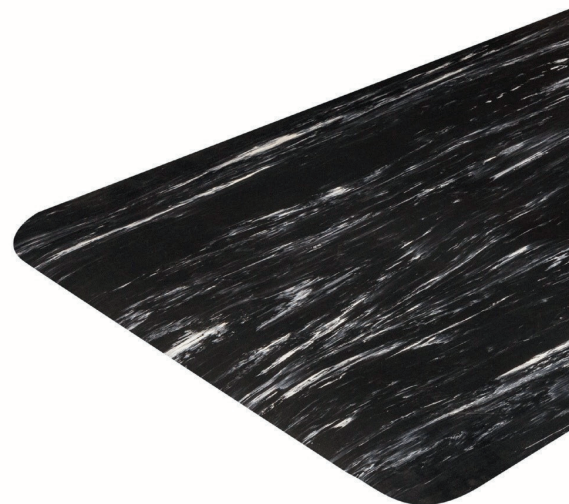
Total Customization: 2', 3', 4' widths

Thickness: #531 – Standard – 9/16"

#541 – Supreme – 5/8"

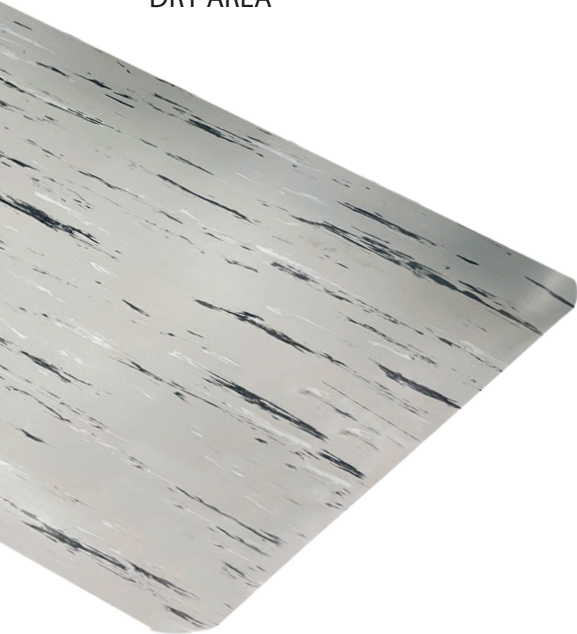
WARRANTY

Total Confidence



#511 Cushion Step Spiffy Vinyl

DRY AREA



FEATURES

- Puncture resistance vinyl surface for better traction, stability and durability
- Foam PVC sponge fused to smooth marble pattern vinyl surface
- Easy to clean, sweep clean or damp mop
- Available in two colors, Black and French Gray
- 25% recycled content

SPECIFICATIONS

Standard Sizes: 2' x 3' 3' x 5' 3' x 12'

Roll Sizes: 2' x 60' 3' x 60' 4' x 60'

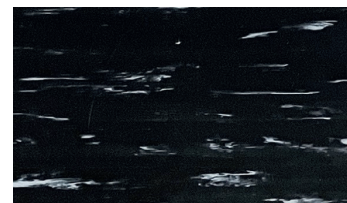
Total Customization: 2', 3', 4', widths

Thickness: #511 - Standard - 9/16"

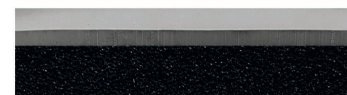
Colors: Black, French Gray

WARRANTY

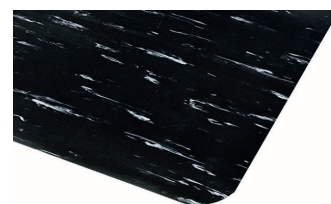
Total Confidence



Smooth marble pattern vinyl surface



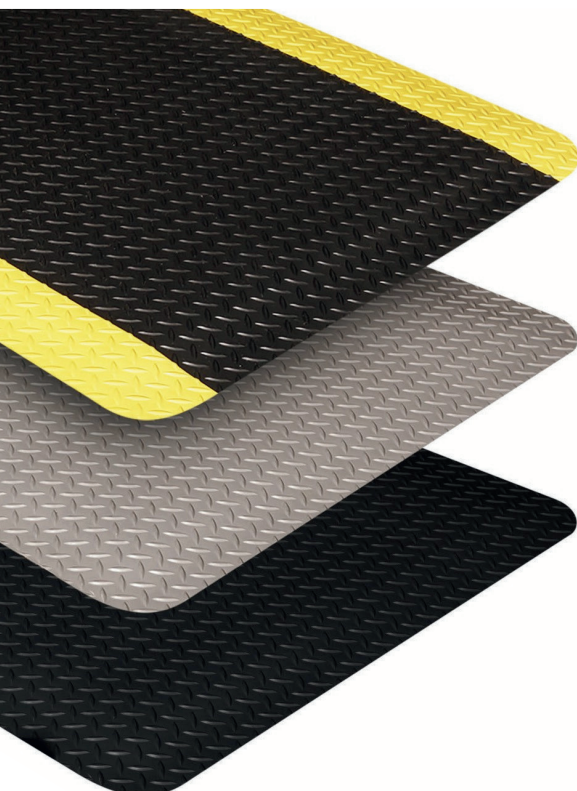
PVC sponge fused to smooth vinyl surface



Rounded corners and beveled edges

#530/#540/#550 Workers-Delight Deck Plate

DRY AREA



FEATURES

- Deck plate PVC surface offers comfort and durability
- Patented Zedlan foam combined with our Fusion Technology creates an unmatched level of durability and comfort
- Slip-resistant coating on underside of mat ensures steadiness and control on smooth surfaces
- Use for assembly lines, work stations, cart traffic areas, finishing stations or assembly stations

SPECIFICATIONS

Standard Sizes: 2' x 3' 3' x 5' 3' x 12' 4' x 6' 4' x 12'

Roll Sizes: 2' x 75' 3' x 75' 4' x 75'

Total Customization: 2', 3', 4' widths

Thickness:

530 - Standard - 9/16"

#540 - Supreme - 5/8" (25% recycled content)

#550 - Ultra - 7/8" provides 25 % more comfort (20% recycled content)

Colors: Black & Yellow, Gray, Black

WARRANTY

Total Confidence



Deck plate PVC surface



Zedlan Foam
with slip-resistant coating



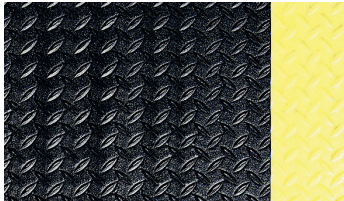
Rounded corners and beveled edges

#560/#562 Wear-Bond Comfort-King

DRY AREA



#562 Foam-injected PVC pebble embossed surface



#560 Foam-injected PVC deck-top surface



Zedlan Foam

FEATURES

- Wear-Bond process molecularly bonds foam-injected PVC top surface with Zedlan foam, creating greater overall comfort than rigid PVC/rubber-type surfaces
- Patented Zedlan foam combined with our Fusion Technology creates an unmatched level of durability and comfort
- Use for work stations, pick modules, pharmacies, packaging areas or cashier stations

SPECIFICATIONS

Standard Sizes: 2' x 3' 3' x 5' 3' x 12' 4' x 6' 4' x 12'

Roll Sizes: 2' x 75' 3' x 75' 4' x 75'

Total Customization: 2', 3', 4' widths

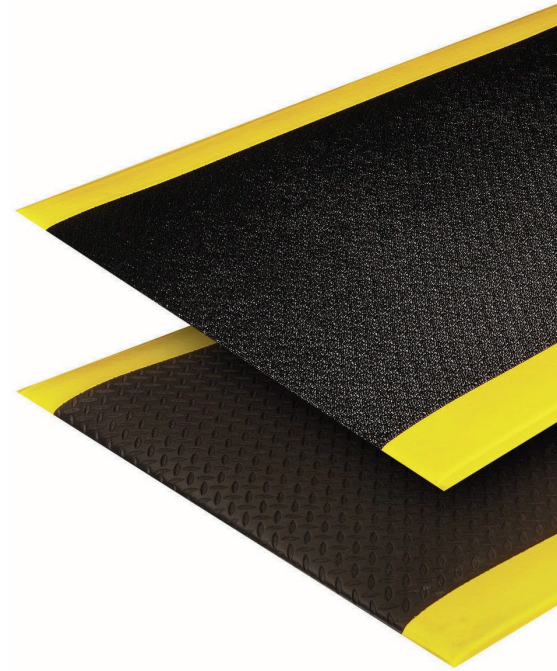
Thickness: 9/16"

Colors:

#560 Deck-Top Surface: Black & Yellow, Black

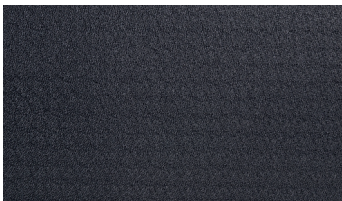
#562 Pebble Surface: Black & Yellow, Black, Gray

WARRANTY
Total Confidence



#465 Alleviator Comfort-King

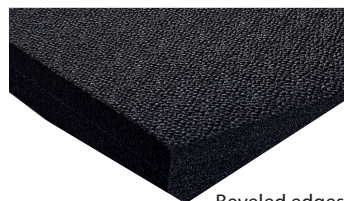
DRY AREA



Textured surface



Zedlan foam



Beveled edges

FEATURES

- Double thick patented Zedlan foam adds unmatched comfort and resilience
- Specifically designed for employee work stations
- Use for cashier stations, hotel front desks, pharmacies or retail work counters

SPECIFICATIONS

Standard Sizes: 2' x 3' 3' x 5' 3' x 12'

Roll Sizes: 2' x 30' 3' x 30' 4' x 30'

Total Customization: Up to 30'

Thickness: 7/8"

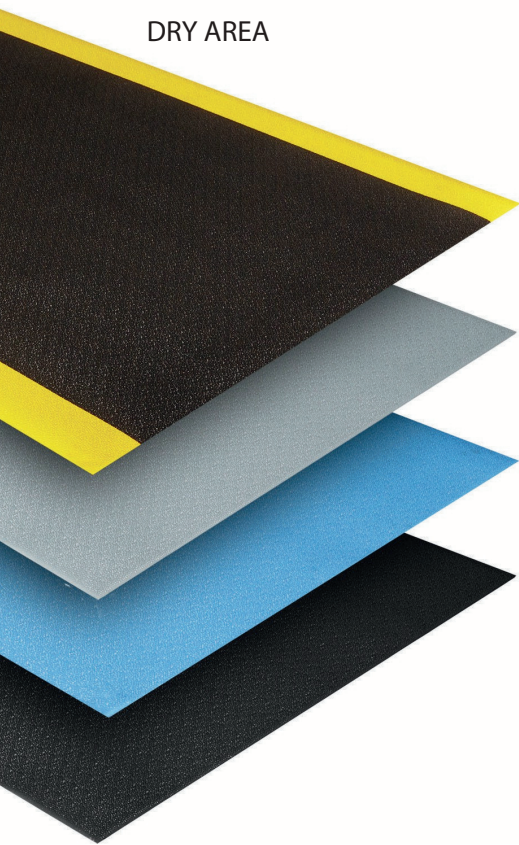
Colors: Black

WARRANTY
Total Confidence



#440/#445 Comfort-King

DRY AREA



FEATURES

- Patented Zedlan foam outwears other foam products by nearly 3-to-1
- Anti-microbial additives to help prevent mold, mildew, and bacterial growth.
- Use for work stations, finishing/assembly stations, cashier stations or pharmacies

SPECIFICATIONS

Standard Sizes: 2' x 3' 3' x 5' 3' x 12' 4' x 6' 4' x 12'

Roll Sizes: 2' x 60' 3' x 60' 4' x 60' 6' x 60'

**Not available with yellow borders*

Total Customization: Up to 60'

Thickness:

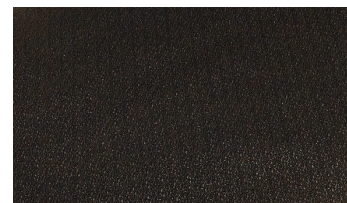
#440 - Standard – 3/8"

#445 - Supreme – 1/2" provides 33% more comfort

Colors:

Black & Yellow, Steel Gray, Royal Blue, Black

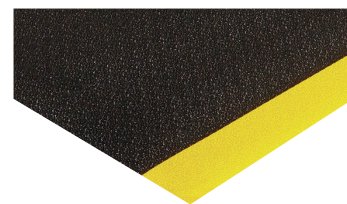
WARRANTY
Total Confidence



Textured surface



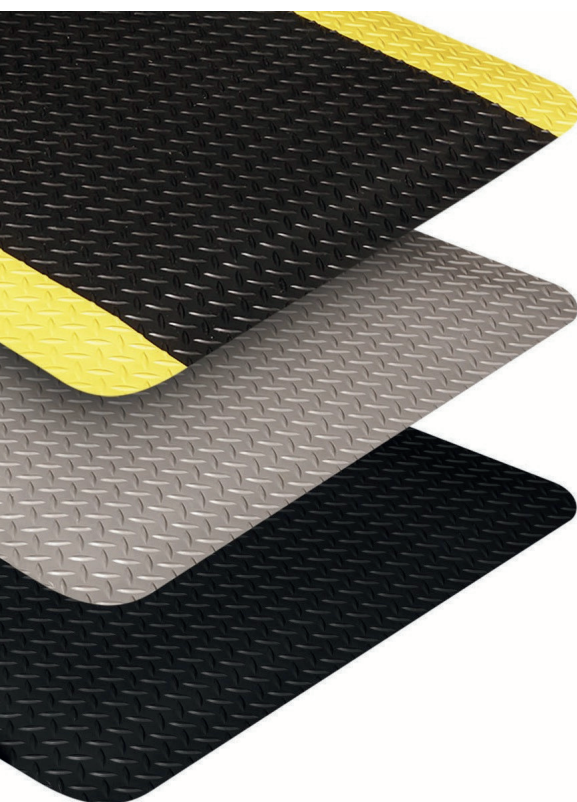
Zedlan Foam



Tapered edges

#500/#505 Industrial Deck Plate

DRY AREA



FEATURES

- Deck plate surface fused to an industrial grade PVC foam backing offers durability and comfort
- Durable slip resistant surface tolerates cart traffic
- Use for finishing stations, assembly stations or work stations
- Up to 25% recycled content

SPECIFICATIONS

Standard Sizes: 2' x 3' 3' x 5' 3' x 12' 4' x 6' 4' x 12'

Roll Sizes: 2' x 75' 3' x 75' 4' x 75'

Total Customization: 2', 3', 4' widths

Thickness:

#500 - Standard – 9/16"

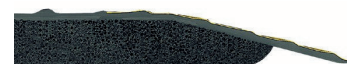
#505 - Ultra – 7/8"

Colors: Black & Yellow, Gray, Black

WARRANTY
Total Confidence



Deck plate surface



Industrial grade foam



#685 Safety-Step Solid-Top

DRY AREA



Solid rubber



Rubber nibs on underside



Modular built-in connectors

FEATURES

- Solid rubber interlocking system allows for unlimited length and width onsite configurations (1' increments)
- Optional snap on ramps available in black or yellow
- Use for factory work stations, large work cells or assembly lines

SPECIFICATIONS

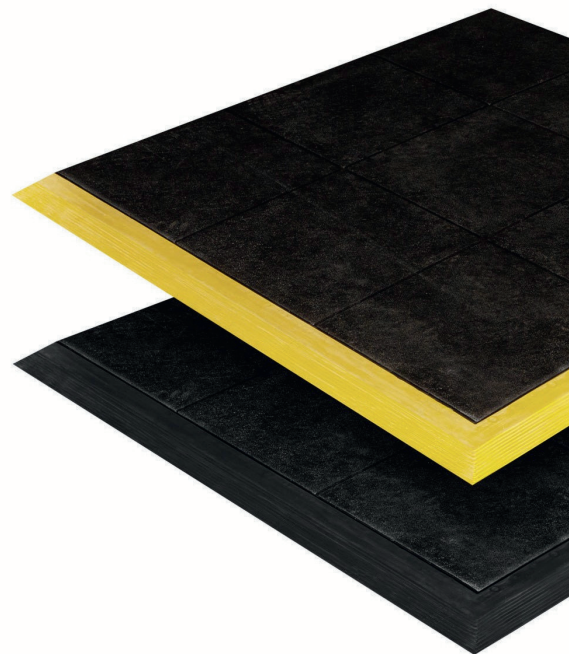
Standard Sizes: 3' x 3'

Total Customization: Up to 12' wide

Thickness: 5/8"

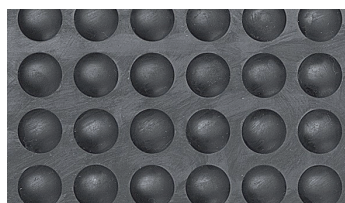
Colors: Black with built in connectors, Yellow ramp or Beveled Black available *Adds 3" to size*

WARRANTY
Total Confidence



#695 Yoga-Flex

DRY AREA



Bubble-top surface



Industrial grade rubber



Interlocking design with beveled edges

FEATURES

- High/Low bubble surface encourages micro-movements that reduce fatigue and muscle pain
- Interlocking system allows for unlimited length of matting (47" increments)
- Use for factories, work stations, finishing /assembly stations or shipping and packaging areas

SPECIFICATIONS

Standard Sizes:

Mat: 2' x 3'

Modular Center: 35" x 47"

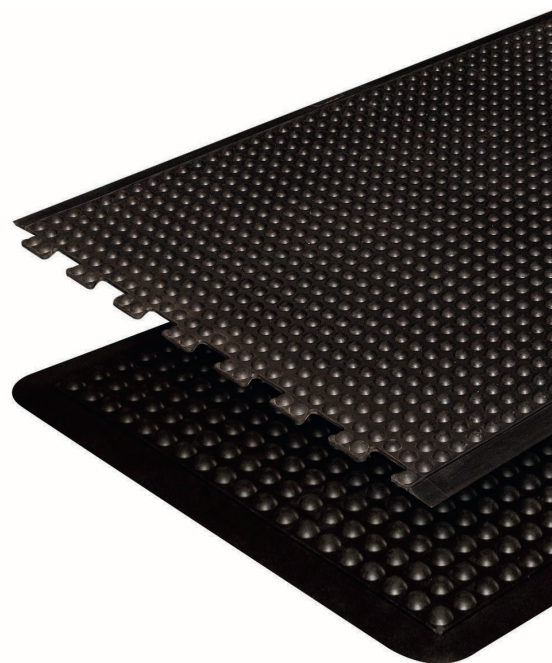
Modular End: 35" x 47"

Total Customization: Available to form custom mats of any desired length.

Thickness: 1/2"

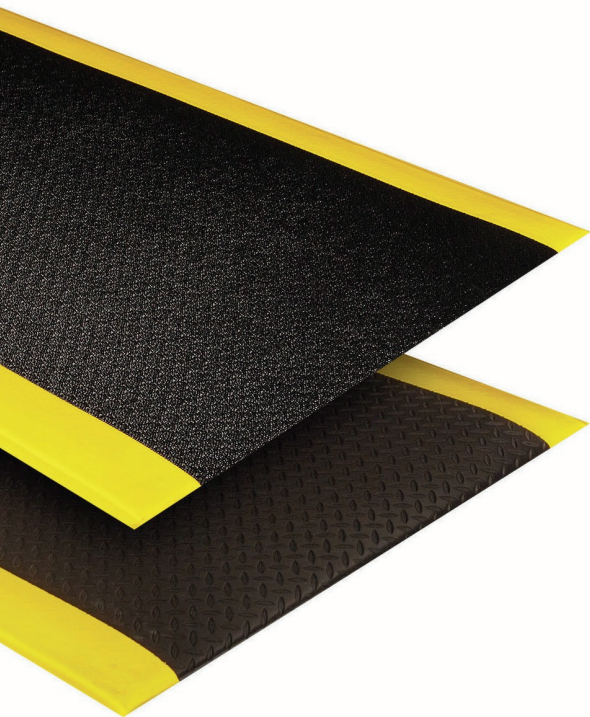
Colors: Black

WARRANTY
Total Confidence



#520/#522 Wear-Bond Tuff-Spun

DRY AREA



FEATURES

- Wear-Bond process molecularly bonds foam injected PVC top surface with industrial grade foam, creating greater overall comfort than rigid PVC/rubber-type surfaces
- Use for assembly stations, packaging areas, service counters or cashier stations

SPECIFICATIONS

Standard Sizes: 2' x 3' 3' x 5' 3' x 12' 4' x 6' 4' x 12'
Roll Sizes: 2' x 75' 3' x 75' 4' x 75'

Total Customization: 2', 3', 4' widths

Thickness: 9/16"

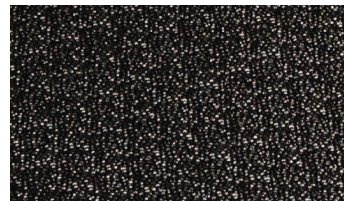
Colors:

#520 Deck-Top Surface: Black & Yellow, Black

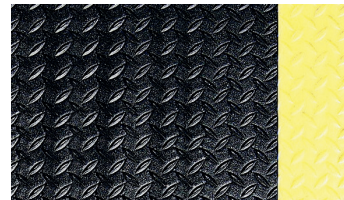
#522 Pebble Surface: Black & Yellow, Black, Gray

WARRANTY

Total Confidence



#520 Foam-injected PVC pebble embossed surface



#522 Foam-injected PVC deck-top surface

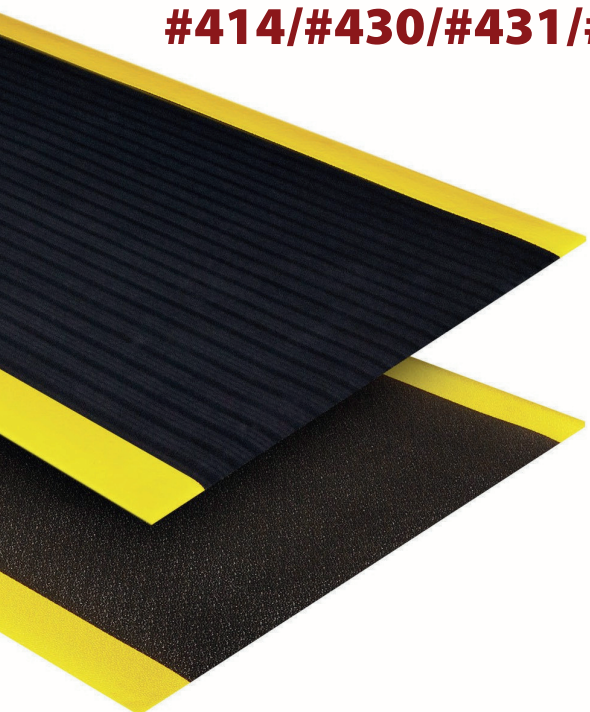


Industrial grade foam

Tuff-Spun Foot-Lover

#406/#407/#400/#410

#414/#430/#431/#432



FEATURES

- Closed cell PVC foam optimizes economical comfort and fatigue relief
- Beveled edges help reduce tripping hazards
- Use for service counters, mailrooms, cashier stations or warehousing/packaging stations

SPECIFICATIONS

Standard Sizes: 2' x 3' 3' x 5' 3' x 12'

27" x 3' 4' x 6' 4' x 12'

Roll Sizes: 2' x 60' 3' x 60' 4' x 60' 6' x 60'

2'x30', 3'x30', 4'x30', 6'x30' (available in 5/8" thickness only)

Total Customization: Up to 60'

Thickness: 1/4" - 3/8" - 5/8"

Colors:

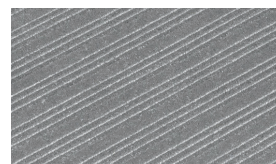
#406, #410, #430 Ribbed Surface: Black & Yellow, Black, Gray

#407, #411, #431 Pebble Surface: Black & Yellow, Black, Gray

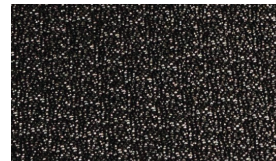
#400, #414, #432 Diamond Surface: Black & Yellow, Black, Gray

WARRANTY

Total Confidence



#406/#410/#430 Ribbed embossed surface



#407/#411/#431 Pebble embossed surface



#400/#414/#432 Diamond embossed surface



#410/#411/#414 Tuff-Spun Safe N Easy

Food Service Matting



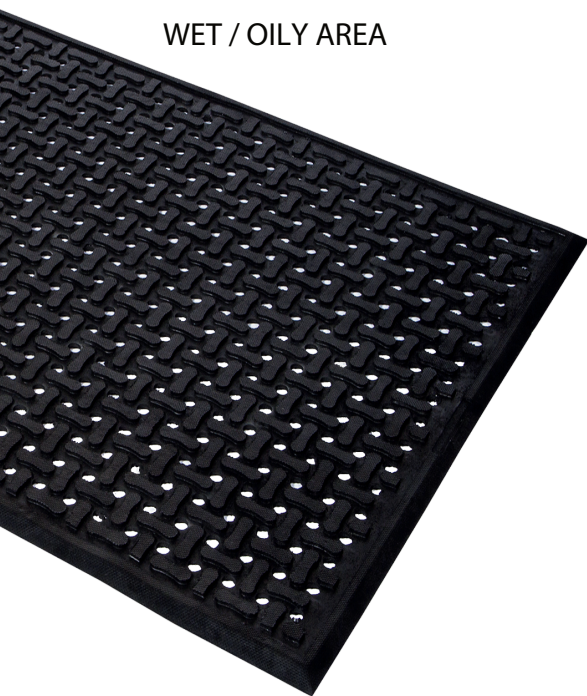
Crown's innovative food service matting is designed not only to enhance the aesthetics of your kitchen but also to prioritize the well-being of your staff. Crown Kitchen Matting takes pride in offering a range of high-quality floor matting solutions that are customizable to suit the specific needs of your unique environments.

From anti-fatigue mats that provide cushioning and support for those long hours on your feet to grease-resistant mats that ensure safety and cleanliness in busy kitchen areas, we have you covered. Our goal is to help you create a comfortable and efficient workspace that promotes productivity and reduces the risk of injuries associated with prolonged standing.

With Crown Kitchen Matting, you can take every step with confidence, knowing that you have the support you need to succeed in the culinary world. Let our matting solutions be the foundation of your success in delivering exceptional food and service to your customers.

#648 Safe Flow Plus

WET / OILY AREA

**FEATURES**

- 100% nitrile rubber offers maximum resistance to water, oil, grease, chemicals and animal fats
- Contains anti-microbial agent that inhibits the growth of odor-causing bacteria and fungi
- Use for food processing and packaging, kitchens, industrial work stations or freezers / cold storage
- 15% of recycled content

SPECIFICATIONS

Standard Sizes: 2' x 3' 3' x 5' 3' x 9'

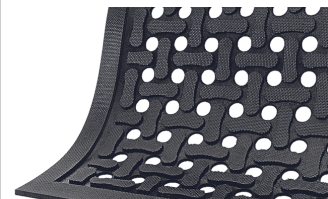
Total Customization: unavailable

Thickness: 3/8"

Colors: Black

WARRANTY
Total Confidence

100% Nitrile rubber with drainage holes



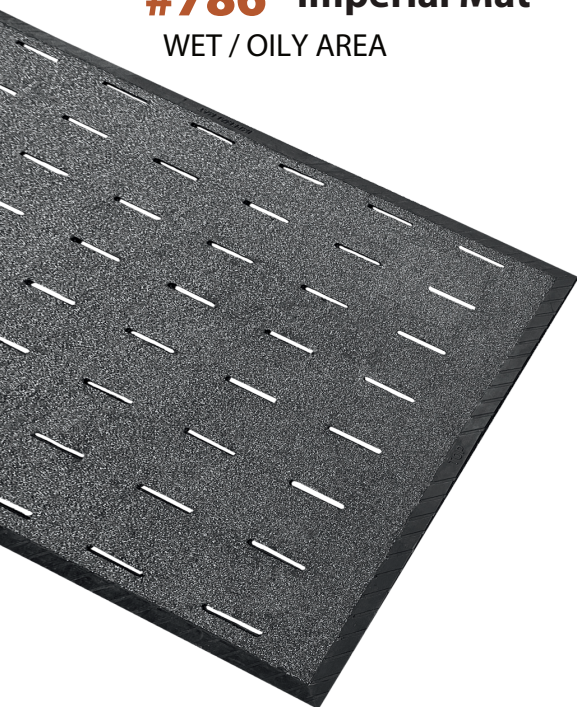
3/8" Thick



Framed design to contain liquids

#786 Imperial Mat

WET / OILY AREA

**FEATURES**

- Durable SBR Rubber
- Grit top surface ensures maximum foot traction in slippery environments
- Drain slots allow fluids to escape the surface
- Non-slip textured backing prevents mat movement

SPECIFICATIONS

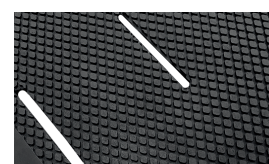
Standard Sizes: 3' x 5'

Total Customization: unavailable

Thickness: 11/32"

Weight: 32 lbs.

Colors: Black

WARRANTY
Total Confidence

non-slip textured back



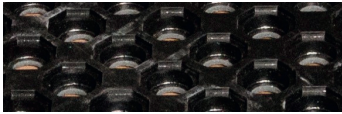
grit top surface with drain slots

#680/#681 Safety-Step Perforated

WET / OILY AREA



#681 Nitrile Rubber Blend Terra Cotta
(grease resistant, 15% recycled)



#680 Rubber Black (general purpose, 47% recycled)



5/8" thick nibbed backing

FEATURES

- Terra Cotta nitrile rubber blend offers resistance to a wide range of greases
- Heavy-duty modular rubber allows easy drainage of liquid and customization of sizes
- Use for factories, irregularly-sized work stations, standing stations, grinding stations or food service

SPECIFICATIONS

Standard Sizes: 3' x 3'

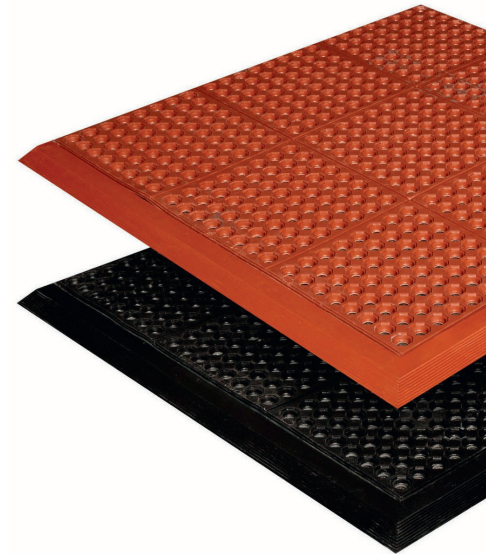
Total Customization: Up to 12' wide

Thickness: 5/8"

Finish: Beveled male/female ramps available Adds 3" to size

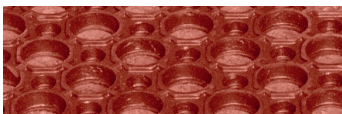
WARRANTY

Total Confidence

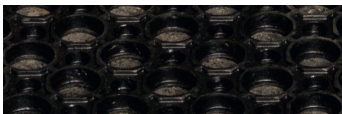


#645/#646 Safewalk-Light

WET / OILY AREA



#646 Nitrile Rubber Blend
Terra Cotta (grease resistant)



#645 Rubber Black (general purpose)



1/2" Thick

FEATURES

- Low profile mat with molded beveled borders for increased safety
- Raised surface rings provide excellent traction
- Use for bar dishwashing areas, food processing packaging, or laundry rooms
- Up to 60% recycled content

SPECIFICATIONS

Standard Sizes: 3' x 5' 3' x 10' 3' x 15' 3' x 20'

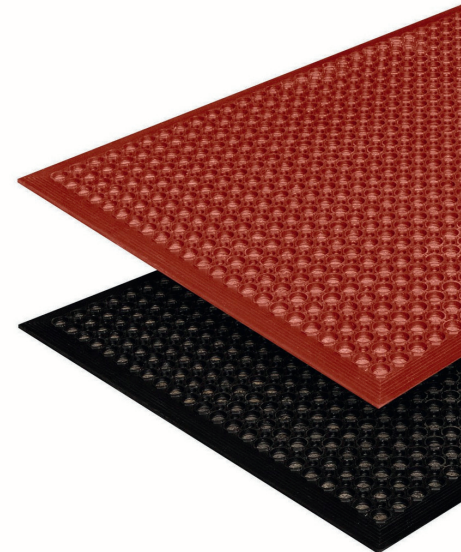
10' length mats and longer have a seam every 5'

Total Customization: Unavailable

Thickness: 1/2"

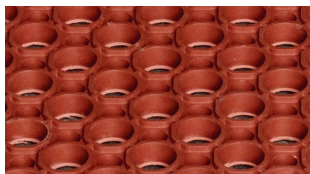
WARRANTY

Total Confidence

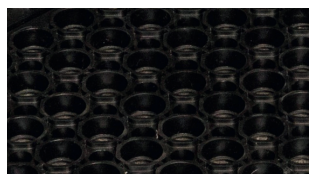


#630/#635/#636 Safewalk

WET / OILY AREA



#636 Nitrile rubber blend terra cotta



#635 General purpose rubber



#630 Pre-assembled yellow ramps available

FEATURES

- Terra Cotta nitrile rubber blend offers resistance to a wide range of greases
- Heavy-duty rubber allows easy drainage of liquid and debris
- Use for industrial work stations, food processing, kitchens, bars or cafeterias

SPECIFICATIONS

Standard Sizes: 3' x 5'

3 Sides Pre-assembled*:

26"x 40" 38"x 40" 38"x 64 38"x 124"

4 Sides Pre-assembled*:

28"x 40" 40"x 40" 40"x 64" 40"x 124"

* general purpose (black) only

Total Customization: Unavailable

Thickness: 7/8"

Finish: #630 Pre-assembled yellow ramps available

Colors:

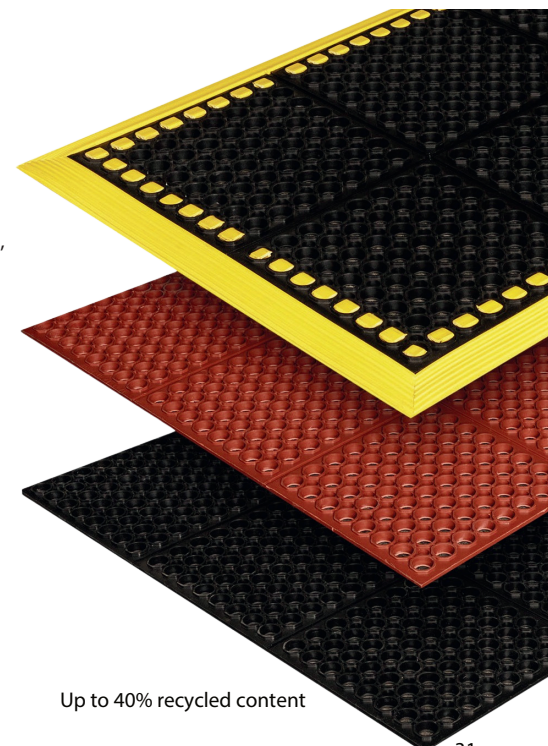
#630 Black with pre-assembled Yellow ramps

#635 Black

#636 Blend Terra Cotta

WARRANTY

Total Confidence



Up to 40% recycled content

#820 Pro-Tekt

RUNNERS

FEATURES

- Economical, pebble surfaced vinyl foam runner allows for a variety of uses
- Cost effective, slip resistant and chemical resistant floor protection

SPECIFICATIONS

Roll Sizes: 3' x 60' 4' x 60' 6' x 60'

Total Customization: Length cuts up to 60'

WARRANTY Total Confidence

Colors: Black



1/8" Thick



#850 Deck Plate

RUNNERS

FEATURES

- Distinctive raised diamond pattern increases traction and durability
- Easy to clean vinyl surface is resistant to most common chemicals
- 50% recycled content

SPECIFICATIONS

Roll Sizes: 2' x 75' 3' x 75' 4' x 75'

Total Customization: Length cuts up to 75'

WARRANTY Total Confidence

Colors: Black



5/32" Thick



#800 Sta-Kleen

RUNNERS

FEATURES

- Industrial grade round rib vinyl runner
- Surface resists normal acids, alkalis, oil, grease and most organic solvents, if removed quickly
- 50% recycled content

SPECIFICATIONS

Roll Sizes: 2' x 105' 3' x 105' 4' x 105'

Total Customization: Length cuts up to 105'

WARRANTY Total Confidence

Colors: Black



1/8" Thick



#840 Corrugated Rubber

RUNNERS

FEATURES

- Durable V-groove rubber surface is slip-resistant
- Resists abrasion

SPECIFICATIONS

Roll Sizes: 2' x 75' 3' x 75'

Total Customization: Length cuts up to 75'

WARRANTY Total Confidence

Colors: Black



1/8" Thick



#871 Gym-Dandy

RUNNERS

FEATURES

- Cost-effective PVC foam solution to protect floors during special events

SPECIFICATIONS

Roll Sizes: 3' x 105' 4' x 105'

Total Customization: Length cuts up to 4' x 105'

WARRANTY Total Confidence

Colors: Black



1/8" Thick



Care and Maintenance

Use & Care Instructions Entrance Matting

Regular maintenance of your mats is critical to extend mat life and appearance. It is recommended to develop a regular maintenance schedule. Frequency will depend on traffic and soil conditions.

INITIAL MAT USE

1. Within a few days of receipt, rolled mats should be unrolled and laid flat.
2. Normal shedding or “fuzzing” may occur with new carpet top mats. This will disappear after a few vacuuming.
3. Some rubber mats may have an oily or sticky film on them. This is a releasing agent that is inherent to molded mats, not a defect. Simply wash down with a mild detergent or degreaser to remove this film.
4. To store mats lay them in a dry area with moderate temperatures. Do not stand on end or crush.

PERIODIC INSPECTION

Periodic inspections are recommended on a regular basis to check for border tears. To repair a damaged border or area, glue the section together with cyanoacrylate ester type (super glue) adhesive.

CARPET MATS AND HDNP PRODUCTS

Entrance mats are used to capture dirt and debris before it can be tracked into a facility. However, mats must be cleaned regularly to extend their usefulness and appearance.

1. Vacuum daily
2. Hand wash or extract stains with a carpet spotter using a water-based carpet detergent or shampoo.
3. Periodically clean the mat with a carpet extractor using a water-based detergent or shampoo. Do not use solvent-based cleaners.
4. Excess water is removed by extracting or hanging the mat. Let the mat dry completely before allowing foot traffic to resume.

IMPORTANT ! Do not use rotary scrubbers or other mechanical cleaners or scrubbers to clean.

Do not use solvents, pH detergents, or alkalis directly on the mat or use the mat in areas where these are used.

How to Order

With a global distribution network, it's easy to put the strength of our matting solutions to work for you.

Visit www.crownmats.com to find the Crown Matting Technologies distributor/rep nearest you. Or, simply call our customer service team at **800-MAT-LINE (628-5463)**. We welcome the opportunity to discuss our products, take your request for a sample, or answer any questions you may have.

Warranty

STANDARD LIMITED LIFE TIME WARRANTY POLICY

New products are warranted against defects in material and workmanship when maintained as instructed in the Use and Care Instructions included with each product. The obligation under this warranty is limited to the original user and to the replacement, repair, or pro-rated refund of said product. This warranty excludes the costs incurred for the installation of the carpet and/or mat. It remains the responsibility of the owner to carry out an inspection of the product prior to the installation.

This Warranty Is Not Applicable Under The Following Circumstances:

1. Improper use, application, installation or cleaning of the product
 2. Normal wear
 3. Use of this product for other than its intended purpose
 4. Lack of proper maintenance as described in the Use and Care Instructions included with each product
 5. Products that have been altered in any way
- If a problem with a product develops during the warranty period, contact your authorized dealer.

Please go to www.crownmats.com for additional warranty information.





T 800.628.5463 F 800.544.2806

T 419.332.5531 F 419.332.4180

2100 Commerce Drive

Fremont, Ohio 43420

U.S.A.

www.crownmats.com

PRODUCTS AND THEIR RELATED DETAILS ARE SUBJECT
TO CHANGE. PLEASE CONTACT OUR CUSTOMER SERVICE
DEPARTMENT TO OBTAIN CURRENT INFORMATION.