

Triathlon

#280



SCRAPER/WIPER | HEAVY TRAFFIC ★★★★★



Heavy duty Berber top surface with a unique non-directional pattern for outstanding scraping and water retention.

APPLICATIONS

For interior areas with heavy traffic - shopping malls, airports, schools, and universities

FEATURES

- Elegant 2 tone, bi-level pattern
- Low-melt treatment that keeps surface strong and coarse for many years to come
- ThermoGrip backing for superior floor protection and slip-resistant properties
- NFSI Certified for "High-Traction".

MAT SIZES:

2' x 3', 3' x 4', 3' x 5', 3' x 8', 3' x 10',
4' x 6', 4' x 8', 4' x 10', 6' x 10',

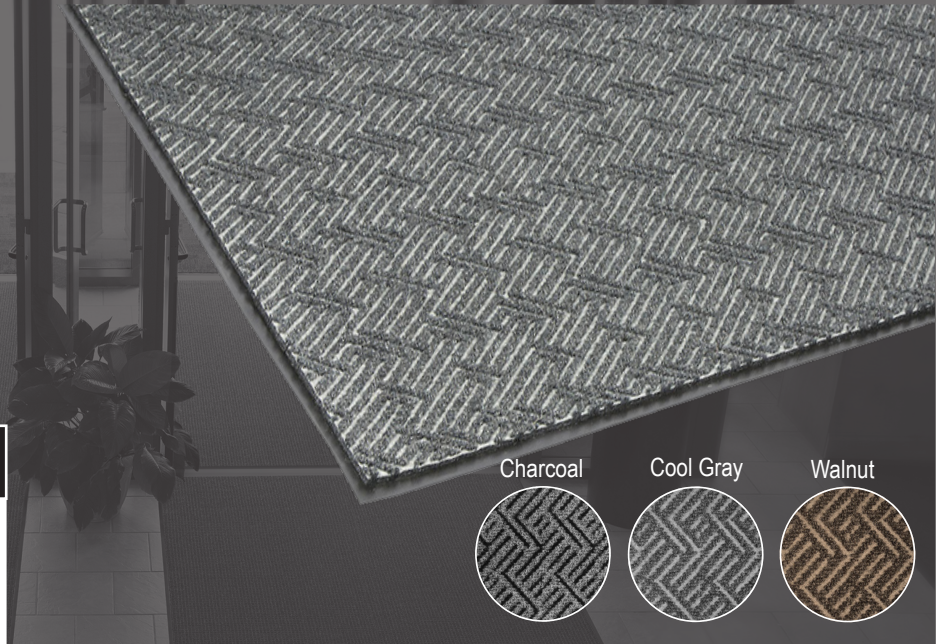
ROLL SIZES:

3' x 60' 4' x 60' 6' x 60'

CUSTOMIZATION: Available

WARRANTY: TOTAL CONFIDENCE

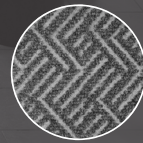
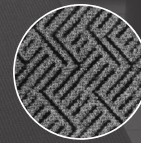
For applied nosing see
Prop 65 WARNING: 65002.



Charcoal

Cool Gray

Walnut



FIBER

Needle punched polypropylene

PILE WEIGHT

44 oz. per sq. yd.

BACKING

ThermoGrip

VINYL STRENGTH

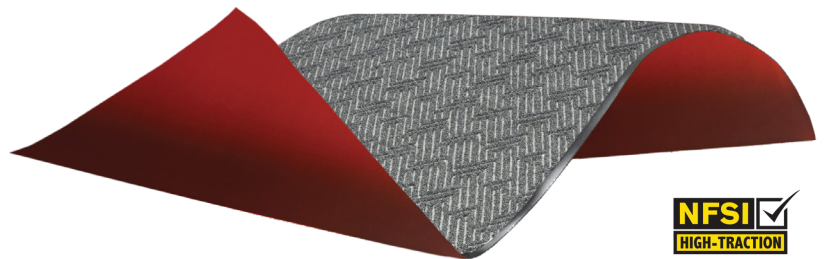
5.5 lbs. per ASTM D624 die-T

FLAMMABILITY

D.O.C. -FF-1-70

MAT THICKNESS:

7/16"



Working Hard for the Hard Working®

WE OFFER A 48 HOUR SHIPPING GUARANTEE FOR IN-STOCK ORDERS.

CrownMats.com • 1-800-MAT-LINE • 2100 Commerce Drive, Fremont, Ohio 43420