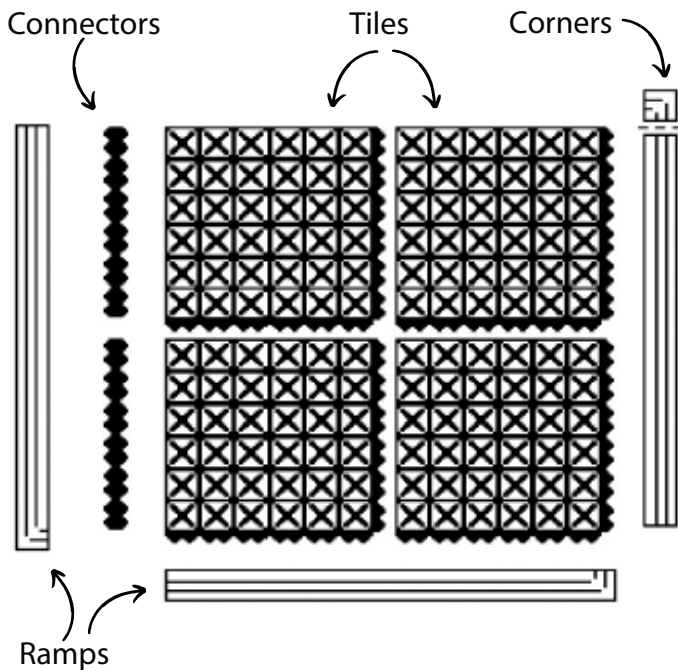


Ergo X-Treme Accessories

SPECIALTY / ACCESSORY

Crown's Safety ramps are available to customize Ergo X-treme 18" x 18" tiles. Maximum durability in wet / oily environments. Ramps are available with or without grit. Exclusive Sure-Snap system holds mats together.



MATERIAL

Nitrile

SIZE

3" x 39"

Color

Yellow and Yellow with grit

WARRANTY: Total Confidence



- All ramps have female connections and are 39" in length.
- To connect ramps to a female side of a workstation use 2 -18" connectors.

Provides a heavy-duty solution for oily and wet areas such as - factories, machine shops, auto manufacturer and transmission facilities.



Working Hard for the Hard Working

WE OFFER A 48 HOUR SHIPPING GUARANTEE FOR IN-STOCK ORDERS.

CrownMats.com 1-800-MAT-LINE 2100 Commerce Drive, Fremont, Ohio 43420

installation instructions

Ergo X-Treme

Installation On-Site Instructions

Tools Needed:

- Mallet
- Glue (Optional)
- Measuring tape-area square foot prior to ordering

Suggested Installation Steps:

1. Unpack and layout all parts on a flat surface and inventory all pieces to make sure your order is complete.

2. Tiles are 18" x 18" and come with 2 adjacent male sides, 2 adjacent female sides and with the choice of ramps and connectors.

3. All ramps are 39" in length which equals 2 mat tile lengths plus a corner. Corners can be removed on site to accommodate the area. Cut at the score mark for stations larger than 36" on the underside of the ramp. Ramps are female receptical only. For any application connectors will most likely be needed.

4. While assembling your mat match the female ramps to male tile edge. On the female tile edge, you will need a black connector to attach the female ramp to the female edge. Keep this pattern until your desired shape is complete.

FEATURES

- 100% oil and grease proof molded nitrile matting
- Aggressively patterned top surface ensures maximum foot traction in slippery environments
- Modular tiles can be assembled to fit any area
- Safety ramps available with or without grit
- Stock sizes and custom available



WE HAVE 4 TILE OPTIONS TO CHOOSE FROM:



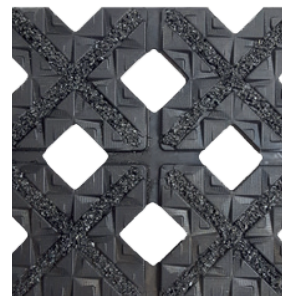
775
Solid Top



776
Drain Through



777
Grit Safe
Drain Through



779
Grit Safe Large
Drain Through



Connector