

Ergo X-treme

#775 #776 #777 #779



OILY/WET AREA



When it comes to durability, Crown's Ergo X-Treme is the ideal choice for harsh environments. Designed to withstand wet or oily conditions, this mat provides maximum safety and toughness. Its modular tiles offer flexibility, allowing you to reconfigure the mat to suit varying work environments. With an efficient drainage system, Crown's Ergo X-Treme ensures excellent adherence on wet/oily surfaces.

APPLICATIONS

- oily areas
- factories
- machine shops
- auto manufacturers
- power transmission facilities

FEATURES

- 100% High-Grade Nitrile Rubber that is grease and oil resistant
- Aggressively patterned top surface ensures maximum foot traction in slippery environments
- Modular tiles can be assembled to fit any area

STANDARD TILE SIZE 18" x 18"

MAT SIZES 3' x 4' 3' x 6' 3' x 9'

More Information

- Sold in full cases of eight tiles only.
- Pre-assembled work stations have borders on both of the shorter dimension sides and one of the longer sides.
- Work stations can be produced in 18" increments, not including any optional yellow custom edging.
- The addition of edging to a custom mat to any side increases the size of the mat by 3".
- Custom mats can be ordered in sizes up to 9' x 21'.



CROWN

MATTING TECHNOLOGIES

CELEBRATING
OVER
80
YEARS
OF
QUALITY
SERVICE

1943

2023

MATERIAL

100% Nitrile rubber

SURFACE

Pattern top surfaces

WEIGHT

41 lbs/case

FLAMMABILITY

D.O.C.- F.F.-1-70 (Pill Test)

THICKNESS

3/4"

Prop 65 WARNING: 65002

WARRANTY: Total Confidence

#775 Solid Top



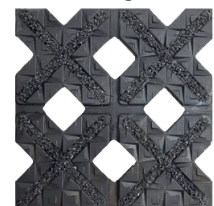
#776 Drain Through



#777 Grit-Safe Drain Through



#779 Grit-Safe Large Drain Through



Working Hard for the Hard Working

WE OFFER A 48 HOUR SHIPPING GUARANTEE FOR IN-STOCK ORDERS.

CrownMats.com 1-800-MAT-LINE 2100 Commerce Drive, Fremont, Ohio 43420