

# Imperial Mat

#786

Wet/Oily Area

Drain Through

Performance Rating ★★★★★



## FEATURES

- Durable SBR Rubber
- Grit top surface ensures maximum foot traction in slippery environments
- Drain slots allow fluids to escape the surface
- Non-slip textured backing prevents mat movement

## SPECIFICATIONS

Standard Mat Sizes: 3' x 5'  
Customization not available  
Thickness: 11/32"

Color Available - Black with grit

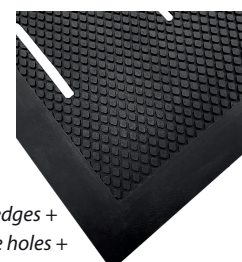
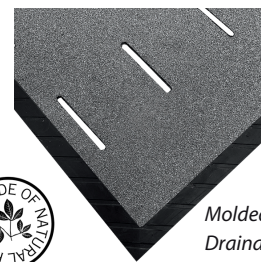
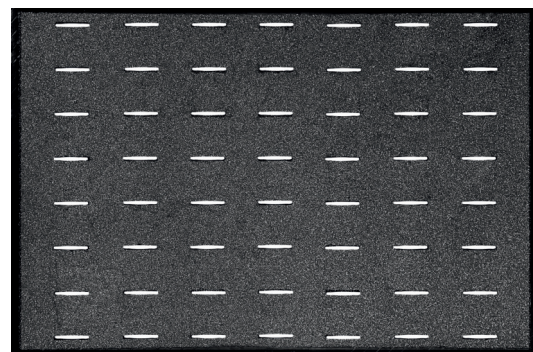
## Technical Data

- Material: SBR Rubber
- Image Pattern: Perforated grit top
- Overall Thickness: 11/32"
- Weight: 32lbs.



Visit us @ [crownmats.com](http://crownmats.com) or call 1-800-MAT-LINE  
2100 Commerce Drive, Fremont, Ohio 43420

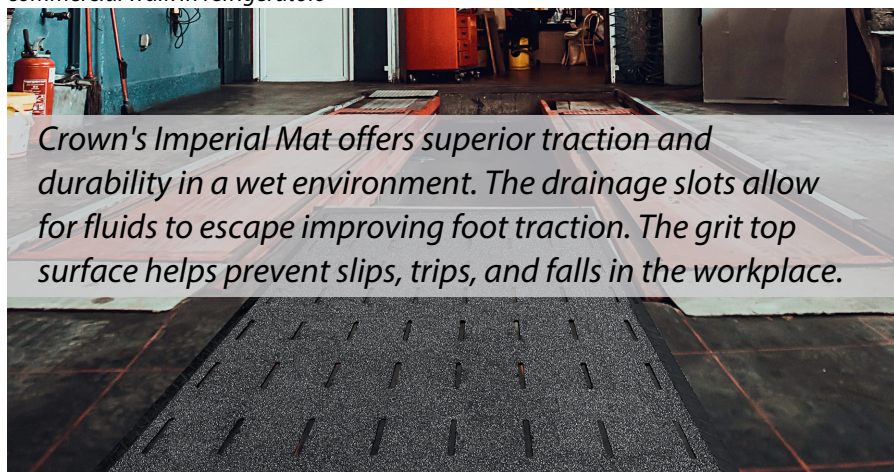
  
**Recommended for  
Food Service**



Molded edges +  
Drainage holes +  
non-slip backing



Applications: food processing, factories, machine shops, auto manufacturing, commercial walk in refrigerators



*Crown's Imperial Mat offers superior traction and durability in a wet environment. The drainage slots allow for fluids to escape improving foot traction. The grit top surface helps prevent slips, trips, and falls in the workplace.*

**WARRANTY**  
Total Confidence



Anti-Fatigue

80%

Durability

100%

Traction

100%