

## What is Sustainability?

Sustainability is based on a simple principle: Everything that we need for our survival and well-being depends, either directly or indirectly, on our natural environment. Sustainability creates and maintains the conditions under which humans and nature can exist in productive harmony, that permit fulfilling the social, economic and other requirements of present and future generations, according to the EPA (US Environmental Protection Agency).

Sustainability for PSL means being better stewards of our environment and our resources allowing us to enrich our mission to serve seniors. Our goal is to maintain the balance between the economic way of thinking and the person-centered focus to improve the lives of those we serve.



### *Our Mission*

*is to offer Christian understanding,  
compassion and a sense of belonging to  
promote wholeness of body, mind and spirit.*

Presbyterian Senior Living has over 29 communities across Pennsylvania, Delaware, and Ohio with over 5,500 residents, who can make an impact on the generations to come. Each of our communities are microcosms of the larger community. Thus by managing our consumption we can improve the quality of life for residents, reduce the impact on the environment and ecosystem with energy and water conservation, effectively use recyclable materials and recycling and have an impact on the larger community.



PRESBYTERIAN  
SENIOR LIVING

One Trinity Drive East, Suite 201 • Dillsburg, PA 17019

[www.pslstewardship.org](http://www.pslstewardship.org)



## *Environmental Stewardship & Sustainability Masterplan Initiative*



PRESBYTERIAN  
SENIOR LIVING

One Trinity Drive East, Suite 201 • Dillsburg, PA 17019

[www.pslstewardship.org](http://www.pslstewardship.org)

# STEWARDSHIP MATTERS FOR RESIDENTS, STAFF, COMMUNITIES AND OUR ENVIRONMENT

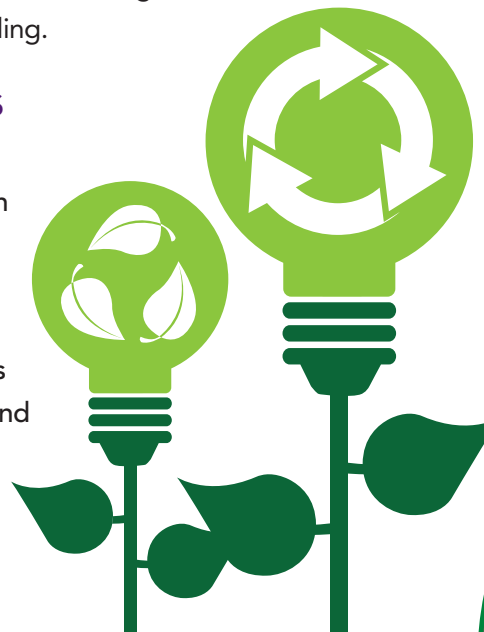
*"The Bible teaches us that the resources of the earth and everything we possess in this life are gifts from God, the creator of all things. As stewards of these gifts we hold them in trust for future generations. But more importantly, we are accountable to God for how these gifts are used. In this context the sustainability initiatives outlined in this plan go far beyond the desire to be fiscally responsible. They are a heartfelt expression of our most deeply held beliefs about our relationship with God and our role as caretakers of His creation."*  
**Steve Proctor, CEO**

In 2015 Presbyterian Senior Living (PSL) is launching an Environmental Stewardship and Sustainability Masterplan Initiative. This masterplan will be a holistic approach to development, management and operation of our communities in harmony with nature to enhance our mission to serve seniors. The goal of the Sustainability Masterplan Initiative is to enhance our mission to serve seniors by being better stewards of our environment and our resources. As a faith-based mission we would like to share the message that it is important to care for the earth and all that is provided for us.

The masterplan is meant to provide guidelines for how we should function as an organization and offer a higher degree of accountability for our actions and decisions through the creation of goals and strategies and the use of metrics for tracking and reporting of successes. Our approach will be driven by our vision, mission and values and will encompass all our current communities and future development and acquisitions. This will help us to grow and leverage lessons learned and best practices from the aging services industry and sustainable building strategies. It represents PSL's commitment to our residents, sustainability, our community and the environment. We aim to incorporate sustainable design principles and strategies into all future capital and expansion projects. The overall objective is to provide healthy environments for our residents and staff while reducing the operational costs for energy and water consumption, utilizing alternative energy sources where possible, reducing waste and increasing recycling.

## Focus Areas

- Development of ES&S Masterplan
- Planning and Awareness
- Education and Self-Assessments
- Empowerment and Implementation
- Further Development of Initiatives



## Our Five Pillars for Success



### Campus Leadership Practices

- Culture Change
- Community Management
- Awareness and Education
- Sustainability Staff Champions
- Green Meetings
- Marketing and Communications



### Constituent Engagement

- Awareness and Education
- Sustainability Resident Champions
- Healthy Living Practices
- Educational Signage



### Conservation Behaviors and Practices

- Optimization of Energy Use
- Water Conservation
- Waste Management



### Capital and Facilities Improvements

- Operating Sustainable Facilities
- Sustainable Improvements Loan
- Procurement of Goods and Services



### Construction, Renovation and Green Building Design

- Campus Master Planning
- Building Retrofits/Energy Audits
- Green Building Best Practices



For more information visit: [www.pslstewardship.org](http://www.pslstewardship.org)