



PRESBYTERIAN
SENIOR LIVING

Mission Driven Values

Annual Community Benefit Report

2 0 1 6

INCLUSIVE • TRANSPARENCY / INTEGRITY • QUALITY • STEWARDSHIP • PEOPLE • COMMUNITY BENEFIT

ORGANIZATIONAL VALUES



MISSION DRIVEN VALUES

Welcome to the fifth edition of Presbyterian Senior Living’s (PSL) Mission Driven Values, a report of our Community Benefit Program. This program reflects the wide variety of activities that are undertaken at each PSL location. We chose the name Mission Driven Values because while the mission of an organization guides its purpose, it should also remain fluid to meet changing needs. This publication demonstrates who we are as an organization, the constituents we serve and our commitment to our neighbors and employees. For more information about PSL or any of our communities, please visit our website, www.presbyterianseniorliving.org.

Presbyterian Senior Living Mission Statement

Guided by the life and teachings of Jesus, the mission of Presbyterian Senior Living is to provide compassionate, vibrant, and supportive communities and services to promote wholeness of body, mind and spirit.

Table of Contents

4	PRESBYTERIAN SENIOR LIVING ADMINISTRATIVE OFFICE	9	Green Ridge Village	17	Ware Presbyterian Village
5	FINANCIAL IMPACT AND TOTAL COMMUNITY BENEFIT SUMMARY	10	Kirkland Village	18	Westminster Village at Allentown
6-21	COMMUNITY IMPACT SUMMARY	11	Long Community at Highland	19	Westminster Village at Dover
6	Cathedral Village	12	Mark H. Kennedy Park	20	Westminster Woods
7	The Easton Home	13	Presbyterian Home at Williamsport	21	Windy Hill Village
8	Glen Meadows Retirement Community	14	Presbyterian Village at Hollidaysburg	22	AFFORDABLE HOUSING OVERVIEW
		15	Quincy Village	23	LOCATIONS
		16	St. Andrew’s Village		



PRESIDENT'S LETTER

2017 marks the year that Presbyterian Senior Living celebrates its 90th year of service to seniors. What began as a working farm in Newville, PA, caring for nine older women has grown to serve more than 5,000 people on a daily basis in a variety of health care, housing, and community service settings. This remarkable history is chronicled in John Killian's book, *A History of Service, A Legacy of Love*. Initially written for PSL's 75th anniversary, it has been revised and updated in its second printing. Over the past 90 years PSL has provided millions of dollars of charitable care to individuals who could not pay for the services they needed. In addition to this direct subsidy, there are a variety of activities that we describe as "community benefit" that includes the following:

- Education and Training – On-site educational offerings extended to the wider community, often in conjunction with other community groups.
- Community Outreach – Programs, both on-site and in conjunction with local schools, churches, senior centers, and other community venues.
- Resident and Staff Volunteer Efforts – The entire PSL family is engaged in volunteer service to help their neighbors and improve their communities.
- Civic Engagement – Participate in civic activities that foster awareness of issues that affect the community and provide direct assistance in solving problems as they are identified.
- Paying Taxes – Even though PSL is legally exempt from many forms of taxation as a charitable, tax exempt organization, PSL pays over \$4.7 million in taxes annually to support the health of the communities in which we reside.

Like the previous edition, *Mission in Motion*, this is a summary of community benefits provided by PSL at its 30 locations in Pennsylvania, Maryland, Delaware, and Southeastern Ohio. It is our privilege to continue the great work of this historic ministry to seniors.

Stephen Proctor, CEO



PRESBYTERIAN SENIOR LIVING ADMINISTRATIVE OFFICE

One Trinity Drive East, Suite 201

Dillsburg, PA 17019

717-502-8840

Steve Proctor, President and CEO

www.presbyterianseniorliving.org

Presbyterian Senior Living (PSL) Administrative Office is located in Dillsburg, Pennsylvania. It is the nexus for communications and administrative oversight of all PSL communities located in Delaware, Maryland, Pennsylvania, and Southeastern Ohio. PSL is governed by a volunteer board of trustees. An important task for the board is to ensure that all programs and services for all communities fulfill the PSL mission statement. The PSL workforce is encouraged to be responsible citizens and work toward creating a better community and world.

Staff volunteer hours are dedicated to churches, schools, soup kitchens, homeless shelters, various society groups and coalitions.

The PSL Learning Center, a state-of-the-art suite, is used by other not-for-profit organizations for meetings and educational and training programs. The learning center is also used on a regular basis for staff training and a host of special events.

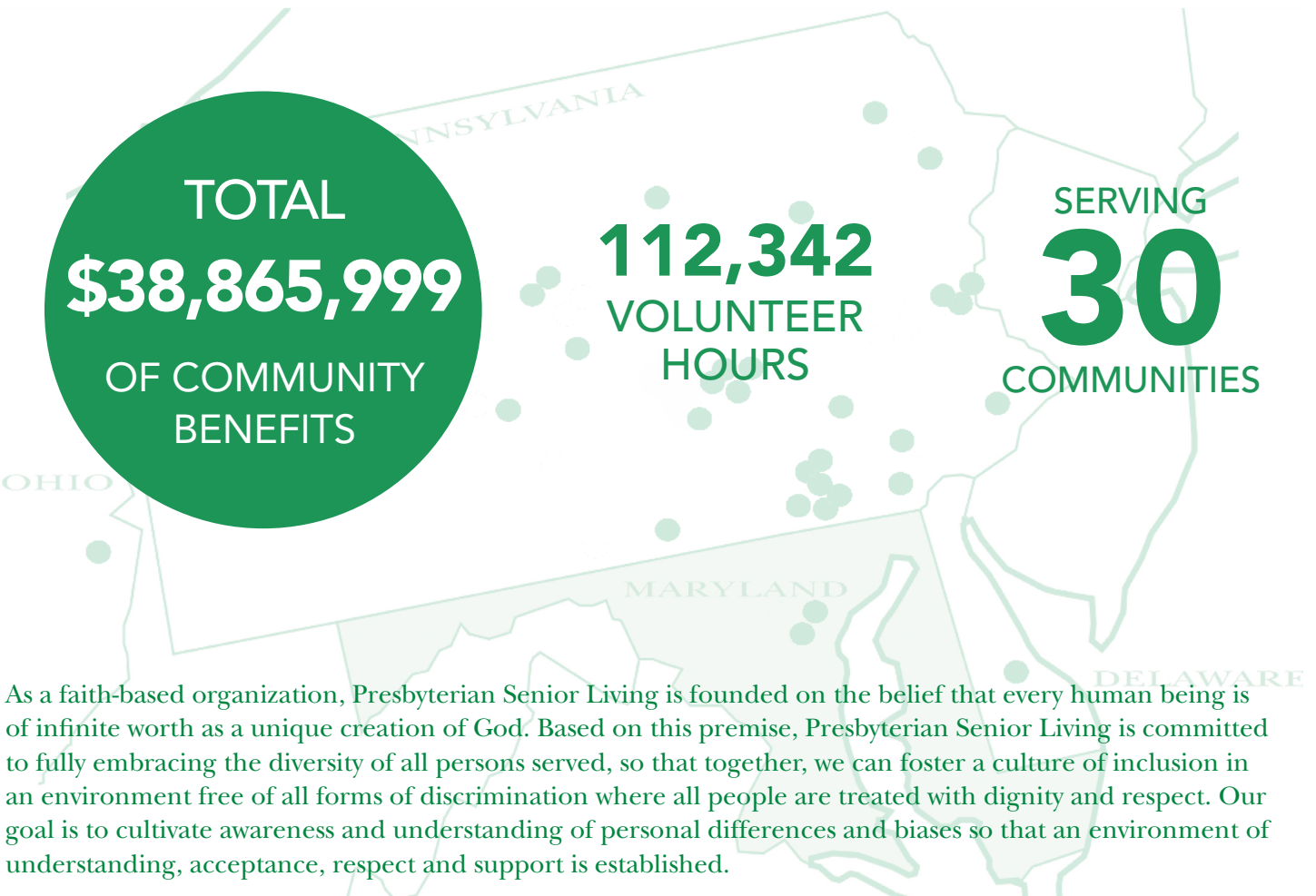
Two special groups that receive support from the administrative office are Forgotten Voices International (www.forgottenvoices.org), a group that provides support to children orphaned by AIDS in Zimbabwe and Zambia. FVI occupies office space in the historic farm house on the Carroll Village campus. In addition, PSL provides support to Govans Ecumenical Development Corporation (GEDCO). In their work with seniors they support a variety of programs that serve the needs of the severely disadvantaged in the Baltimore area. PSL has been working with GEDCO for over 20 years. The range of their activities is listed on the GEDCO website at www.gedco.org.

FINANCIAL IMPACT AND TOTAL COMMUNITY BENEFIT SUMMARY

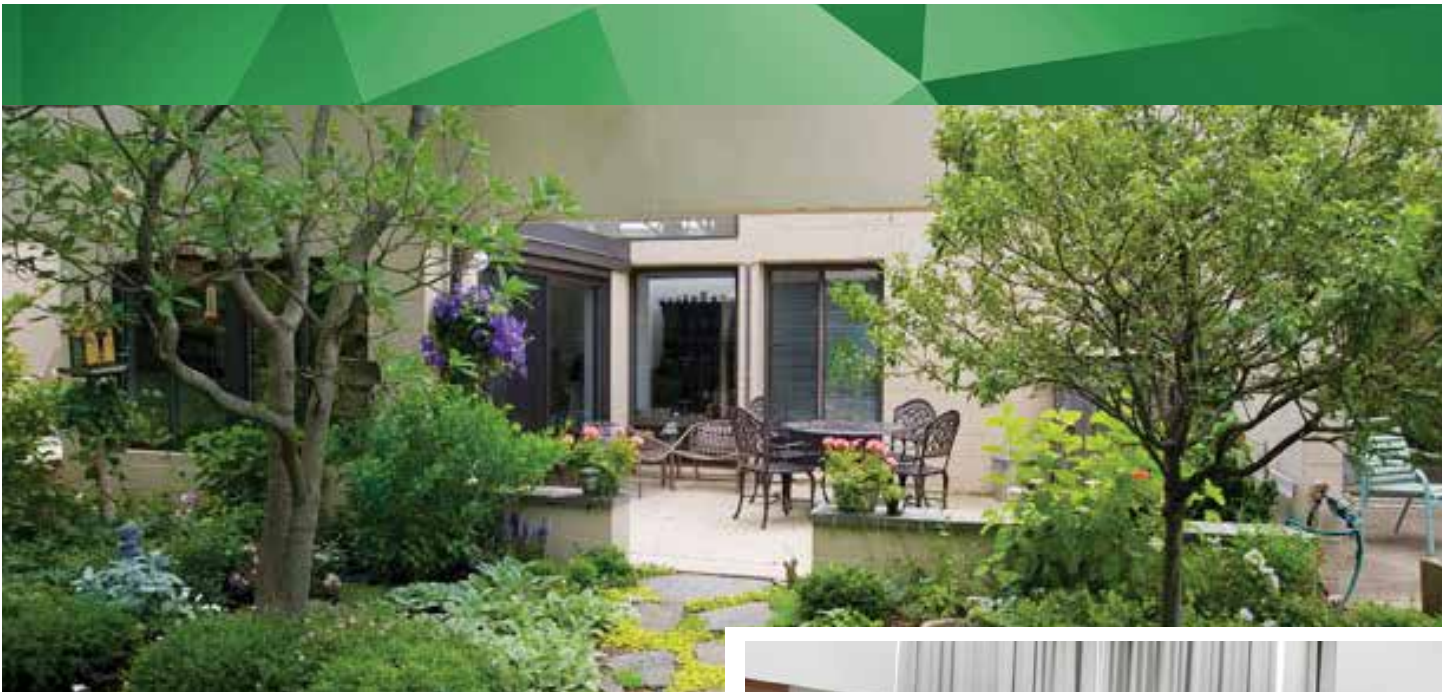
Persons Served

Independent Living	3,116
Skilled Nursing	3,736
Personal Care/Assisted Living	680
Community Based Housing.....	1,765
Total Persons Served	9,297

Benevolent Support to Residents	\$5,560,364
Payments and Contributions to Municipalities	\$4,721,463
Community Outreach.....	\$762,046
Civic Engagement	\$1,501,482
Education and Training.....	\$348,215
Benevolent Care (provided at less than pre-established charges).....	\$28,584,172



As a faith-based organization, Presbyterian Senior Living is founded on the belief that every human being is of infinite worth as a unique creation of God. Based on this premise, Presbyterian Senior Living is committed to fully embracing the diversity of all persons served, so that together, we can foster a culture of inclusion in an environment free of all forms of discrimination where all people are treated with dignity and respect. Our goal is to cultivate awareness and understanding of personal differences and biases so that an environment of understanding, acceptance, respect and support is established.



CATHEDRAL VILLAGE

600 East Cathedral Road
Philadelphia, PA 19128
215-487-1300
Cathy Ng, Executive Director
www.cathedralvillage.com

Cathedral Village of Presbyterian Senior Living is a Continuing Care Retirement Community, providing services to individuals in independent living; personal care; short-term rehabilitation and long-term nursing services. The community is very active and engaged in the town of Roxborough and the City of Philadelphia. Cathedral Village provides outreach and support services for individuals throughout the Philadelphia area through staff and resident involvement. They offer their campus to community groups and organizations for their meetings and events. Staff and residents participate in community events with Meals on Wheels, American Red Cross Blood Drive, Town Hall meetings and is a training site for nursing students and interns from Roxborough Hospital School of Nursing and Jefferson School of Nursing.





THE EASTON HOME

1022 Northampton Street
Easton, PA 18042
610-250-5000
Paul Cercone, Executive Director
www.eastonhome.org

The staff and residents of The Easton Home are actively engaged in the community. They continually strive to form partnerships by hosting on-site programs and also reaching out to local organizations by participating in community events.

They continue our work with the Cops and Kids Reading Room Program. They host local community groups including West Ward Business Roundtable and Catholic Daughters of America who utilize meeting space. Throughout the year they organize intergenerational programming and activities with Little Rovers Daycare, Local Mom's Clubs, Girl Scout Troop and Lafayette College students who do weekly visits to engage one-on-one and as a group with the residents.

In support of the Alzheimer's Association they participate and sponsor Walk to End Alzheimer's along with hosting fundraiser activities including Antique Car Show, Community Garden Flower Sale and Bake Sales raising over \$1,500.



Dan Zmoda, Director of Environmental Services heads "For the Birds" a resident bird club that meets monthly. Twelve residents built and donated eight bluebird houses in the spring to Jacobsburg State Park.



GREEN RIDGE VILLAGE

210 Big Spring Road

Newville, PA 17241

717-776-8200

Hope Lambert, Executive Director

www.greenridgevillage.org

Green Ridge Village strives to help you remain independent, and in your apartment or cottage, for as long as possible. They also provide additional levels of living if they should ever be needed. Their complete range, or continuum of care is offered within their community, amidst familiar surroundings, and provides long-term security and peace of mind. They assist with delivering meals for Meals on Wheels, assisting at Project Share, the Salvation Army. Residents help at the John Graham Library, local schools with reading programs. Several residents assist with programs at local churches including music programs and Bible studies. Residents assist at local hospitals including Chambersburg Hospital and local colleges. They have residents that collect the data of their local bluebird population and nesting patterns with the Bluebird Society of PA, assist with the Big Spring Watershed Association to preserve the spring that runs along their campus. Green Ridge also hosts the Big Spring Watershed meetings once a month and their fly tying classes. The Village Aires, comprised of



residents, has a musical performance twice a year for the community.

Residents play the piano for their Memory Care and Personal Care residents. The Green Ridge Village Railroad hosts a full scale working model railroad station. This is for their model railroad collectors and it is also open to the public for all to enjoy. The Woodworkers Group is available for those who enjoy the hobby of crafting wood projects that are useful to their community. The Gardening Club hosted a garden tour where residents enjoyed showing off their “Green Thumbs” and their gardens. The Welcoming Committee enjoys welcoming new folks who made the Green Ridge community their new home.



GLEN MEADOWS RETIREMENT COMMUNITY

11630 Glen Arm Road
Glen Arm, MD 21057
410-319-5000
Peter Dabbenigno, Executive Director
www.glenmeadows.org

Glen Meadows Retirement Community is a continuing care retirement community, providing services to individuals throughout independent living, assisted living, and long-term nursing services. Glen Meadows strives toward interconnectedness with the greater community. Residents and team members work diligently toward monthly outreach campaigns for a variety of organizations including: The American Heart Association, The Alzheimer’s Association, Easter Seals of Central and Western Pennsylvania, Victory Villa (a local school), local hospitals, Meals on Wheels and the Maryland SPCA. Residents also give back a great number of hours to the Glen Meadows community by leading weekly programs in assisted living as well as being part of numerous committees throughout the campus. The largest amount of volunteer hours come from the Bi-Annual Estate Sale, which is managed by residents.





KIRKLAND VILLAGE

One Kirkland Village Circle
Bethlehem, PA 18017
610-691-4500
Samantha Roos-Meiser, Executive Director
www.kirklandvillage.org

The residents and staff of Kirkland Village in Bethlehem have continued their focus on community engagement by supporting local organizations through the donation of meeting space and ancillary support for events and programs. In 2016, a significant impact was made by staff who volunteer in their neighborhoods, churches, schools, and civic organizations. Both staff and volunteer hours were also in support of Historical Lectures, Church Choir and Committee Leadership, piano playing for the Bach Choir of Bethlehem/First Presbyterian Church, teaching at the Wesley United Methodist Church, Meals on Wheels, First Presbyterian Easton-Pastoral Care, Fellowship Facilitation, Prison Counseling, Presbytery Engagement Team, Volunteering at St. Luke's Hospital, ESL teacher for foreign student's wives, International Friendship Program Coordinator, Lehigh University Community Program, Pianist at Blough Home, Pianist Emmanuel E.C. Church, Serving on Mission Commission and Ministry Council at Emmanuel E.C. Church, Thrift Shop Volunteering at God's Goods at



Church of the Cross, Volunteer at One by One Cat Rescue Adoption Center and Volunteer Grant Writing, Church Prayer Shawl Ministry, St. Luke's Stroke Club, and many more.



THE LONG COMMUNITY AT HIGHLAND

600 East Roseville Road
Lancaster, PA 17601
717-381-4901
Susan Saxinger, Campus Administrator
www.longcommunityhighland.org

The Long Community at Highland is a retirement community, providing services to individuals in independent living and personal care. The community is very active and engaged in the Manheim Township and greater Lancaster area. The Long Community at Highland (LC) provides outreach and support services for individuals and organizations throughout the area through team member and community members involvement. They offer their campus to community groups and organizations for their meetings and events. Team members and community members participate in community events, local churches and other retirement communities. LC also provides a safe trick or treat and Easter egg hunt annually.





MARK H. KENNEDY PARK

108 Pine Avenue
St. Clairsville, OH 43950
740-695-7275
Charlene Moffo, Director of
Independent Living Resident Services
www.markkennedypark.org

Mark H. Kennedy Park is a bustling community located in Southeastern St. Clairsville, Ohio. The independent living apartments and cottages are set in a park-like community surrounded by trees and nature walks – a real treasure for nature enthusiasts.

The location is minutes away from downtown St. Clairsville providing unique downtown shops, nature walks, a beautiful historic district, farmers market, outdoor swimming pool, and tennis courts. Residents enjoy community involvement at their church, local hospitals and senior centers. Girl Scout troops meet regularly at the lodge and friendship time is a pleasant social activity with friends from the neighborhood. The MKP campus is used free of charge throughout the year for business meetings, Rotary Club and Chamber of Commerce meetings.

Holiday time is special as residents and staff enjoy supporting those agencies who request donations of holiday gifts for needy children, baskets of food for underserved seniors and other missions.



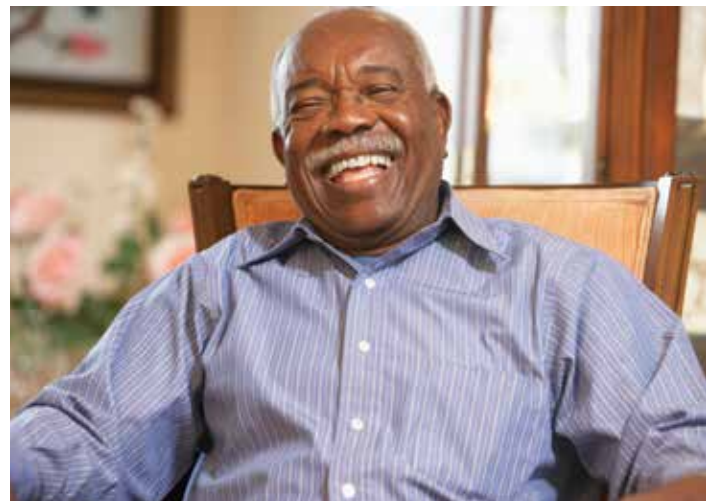


PRESBYTERIAN HOME AT WILLIAMSPORT

810 Louisa Street
Williamsport, PA 17701
570-610-8350
Renná Engle, Administrator
www.williamsportpresby.org

Presbyterian Home at Williamsport, a personal care community in Williamsport PA, may be small but its impact on the surrounding community is great. The residents and staff organize and contribute to many activities in the area. From a community wide Easter Egg Hunt to participating in a safe Halloween Trick or Treat night, they want to be a positive factor in their neighborhood.

The residents made care packages and prepared cards for soldiers including one specific soldier from the local area. They collected donations for local food banks and scarves, gloves and mittens for the Williamsport City Salvation Army. The residents enjoy making dog treats for the Lycoming County SPCA and cards for the children at the Susquehanna Health Hospital. Continuing in 2016, the residents participated in a mentoring program with West Branch Elementary School.



Each year, the Presbyterian Home staff holds a Community Week where they partner with local providers to offer hearing screenings, spinal analysis, and vision testing.



PRESBYTERIAN VILLAGE AT HOLLIDAYSBURG

220 Newry Street
Hollidaysburg, PA 16648
814-693-4000

Debra Larkin, Executive Director
www.hollidaysburgretirement.org

The Presbyterian Village at Hollidaysburg provides outreach and support services for individuals throughout the Hollidaysburg/Altoona area through staff and resident involvement. Meeting space is offered to community groups and organizations for their meetings and events. Staff and residents support the community through events such as, St. Vincent DePaul Society, SPCA, Meals on Wheels, local churches, the American Red Cross blood drive, and by offering a safe trick or treat event and Easter egg hunt each year.

The Presbyterian Village is a training site for nursing students and interns from various disciplines from Penn State (main campus), Penn State Altoona campus, the greater Altoona Career and Technology Center, and Indiana University of Pennsylvania.

A fun, yet meaningful, Red Nose event was held where individuals purchased red noses to wear and donated non-perishable food to the St. Vincent



DePaul food bank. Another collaborative effort was the Treasures for Children held at the Salvation Army. Also collected items for Family Services for Domestic Abuse. The project collected personal care items, toys, games, blankets, pillows, clothing and household items. A pop-top tab collection (100 lbs. worth) to the Center of Independent Living – a service dog agency that aides people in living independently.



QUINCY VILLAGE

6596 Orphanage Road
Waynesboro, PA 17268
717-749-2300

Jodi Murphy, Executive Director
www.quincylvillage.org



Quincy Village is a Continuing Care Retirement Community, providing services to individuals in independent living, personal care, health center and affordable housing at Wesley House. The community is very active and engaged in Quincy Township as well as Waynesboro. Quincy Village (QV) provides outreach and support services for individuals throughout the Franklin County Area through staff and resident involvement. They offer their campus to community groups and organizations for their meetings and events (examples Lions Club and the Blue Ridge Theater Guild). Staff and residents host community events on campus and many of the residents and staff volunteer at local churches and shelters. The community is a training site for nursing students and engineer students from the Penn State Mont Alto Campus. QV had over 214 individual volunteer their time. 140 of them reside at Quincy Village.

Construction has completed on Parker House Assisted Living and Memory Support at Quincy Village. Parker House is the future of assisted living and is an



innovative “small house” concept and the first licensed assisted living in the area.

Each of the three residential-style homes serves 16 residents and promotes independence and meaningful living enabling seniors to “age in place”. That means if additional care is needed, assisted living regulations permit most of those services to be provided on-site.



ST. ANDREW'S VILLAGE

1155 Indian Springs Road
Indiana, PA 15701
724-464-1600
Brian Parks, Executive Director
www.standrewsvillage.org

Throughout the year, there were many activities organized with the residents and employees of St. Andrew's Village engaged in the community. There are activities on campus that involve residents, families, guests and community outreach people. Residents from St. Andrew's Village sing in the Gracedale Presbyterian Church choir and distribute bulletins before the service starts. Residents collected dog and cat food and snack items for the local Humane Society. Many of the staff participate with community groups such as the Blairsville Historical Society, the Humane Society, Cherry Hill Township Fire Department, Evergreen Boys and Girls Clubs, Chevy Chase Community Center, Indiana Blackhawks Soccer Team, Indiana Area Lacrosse Club and various mission trips for local churches and relief efforts.

Many community groups use space at St. Andrew's Village for meetings or activities such as Rotary, Kiwanis and the Chamber of Commerce. Students from IUP and the Indiana County Technological School use St. Andrew's as a training site.



Every day a small army of volunteers performs countless acts of kindness in the community, adding a new dimension of care and compassion to the work of staff. The Friends of St. Andrew's Village Auxiliary fulfill a special role as well and offer support through their volunteering and fundraising efforts.



WARE PRESBYTERIAN VILLAGE

7 East Locust Street

Oxford, PA 19363

610-998-2400

Kevin Jones, Executive Director

www.warepresbyterian.org

Ware Presbyterian Village is a Continuing Care Retirement Community, providing services to individuals in independent living; personal care; short term rehabilitation and long term nursing services; as well as in their home setting through At Home Services. Ware provides outreach and support services for individuals throughout Chester County PA through staff and resident involvement. They offer their campus to community groups and organizations for their meetings and events. Staff and residents participate in community events with local churches, schools, Cancer Society, Canine Partners for Life, Red Cross, Salvation Army, food banks, Habitat for Humanity and a variety of other community service organizations. Employee and resident outreach consists of a variety of volunteer projects from fostering puppies, providing care packages to the homeless, delivering meals for Meals on Wheels, to volunteering for the local fire department as an EMT, tutoring local school children and teaching deep breathing and guided imagery to veterans with PTSD. Ware is also



involved in recycling and currently recycles cooking oil, fluorescent lights, batteries, plastic bags, cardboard, paper, ballast and scrap metal.



WESTMINSTER VILLAGE AT ALLENTOWN

803 North Wahneta Street
Allentown, PA 18109
610-782-8300
Nancy Bullivant, Executive Director
www.wmvallentown.org

One of the most popular and well received activities at Westminster Village is the Kazoo Band. This group of residents not only provides entertainment on the Westminster campus but off campus as well. They have participated and won in the Bethlehem Halloween parade for the past several years. In addition, they have played at local day care centers, Kirkland Village, The Easton Home and churches. The residents and staff have collected clothing for the Clothing for Kids project in Allentown and food for Second Harvest. A blood drive for the American Red Cross was held at Westminster Village in August and December. Westminster Village residents and volunteers hold the Annual Lemon Tree Bazaar. The residents volunteered at the Bethlehem Celtic Classic. Also, Westminster Village was host to nursing and nurse aide students from Lincoln Leadership Academy, DeSales and Cedar Crest Colleges.





WESTMINSTER VILLAGE AT DOVER

191 Westminster Drive
Dover, DE 19904
302-744-3600
Mary Ann Poling, Executive Director
www.wmvdover.org

Among its many progressive initiatives Westminster Village has partnered with Masterpiece Living, a nationally recognized research based organization providing expertise in successful aging. Masterpiece Living assists retirement communities in providing a balance of Spiritual, Intellectual, Physical and Social opportunities through incorporating the involvement of its diverse Human Capital, its staff and residents.

Volunteerism is alive as a large percentage of residents volunteer their time and talents on and off campus. Whether it's the Village Thrift Shop, which is open to the community at large or the campus. Gift Shop resident volunteers work hand and hand with proceeds to support benevolent care needs. In 2016 many volunteer hours were accrued in such areas as visitation, school based mentoring, performing arts and veteran organizations. With a commitment to being engaged, Westminster Village extends the use of its resources to the wider community to groups such as New Castle



Presbytery, Toastmasters and the Alzheimer's Association to name a few.

Intergenerational Programming, Fall Prevention Classes and Alzheimer's Disease Lectures were among the many education based events to take place on campus.



WESTMINSTER WOODS AT HUNTINGDON

360 Westminster Drive
Huntingdon, PA 16652
814-644-2000
Chad Evans, Executive Director
www.westminsterretirement.org

Westminster Woods is a Continuing Care Retirement Community, providing independent living; personal care; short term rehabilitation and long-term nursing services; as well as At Home Services. They provide outreach and support services for individuals throughout Huntingdon County through staff and resident involvement such as monthly meetings of Juniata College Retirees and Emiriti. They offer their campus to community groups and organizations for their meetings and events such as: Huntingdon County Artists' League; Alzheimer's and Dementia Caregiver Support Groups; Clinical Practice Site for CNA and LPN students; 100 Women Who Care; quarterly Food Bank drives; project site for various Boy and Girl Scout Troups. Staff and residents participate in community events with local churches, schools, fire companies, the Humane Society and a variety of other community service organizations. Employee and resident outreach consists of a variety of volunteer projects.



The Friends of the Woods, the volunteer Auxiliary at Westminster Woods, help to raise funds by conducting special projects to help the residents. One of those projects is the always popular Annual Yard Sale.



WINDY HILL VILLAGE

100 Dogwood Drive
Philipsburg, PA 16866
814-342-8400

Bob Etchells, Executive Director
www.windyhillvillage.org

Windy Hill Village strives to be an active part of the Philipsburg community and the Moshannon Valley by providing supportive services to the residents and the community. Through independent living, personal care, short-term rehabilitation, long-term nursing services as well as in home care through At Home Services, Windy Hill provides personalized, caring services at the conveniently located campus setting. In their communities, residents and staff contribute through diverse groups and organizations such as Relay for Life, the YMCA, Alzheimer's Association, SPCA, Goodwill Industries, Relay for Life, youth and children's organizations and service organizations, such as Kiwanis. The volunteer Windy Hill Village Auxiliary makes a big impact on the community as well. As volunteers, they fulfill a special role in the daily lives of residents and offer financial support through their fund raising efforts. The Auxiliary holds successful annual events, such as an Easter Egg Sales and the Annual Holiday Bazaar. The funds raised by these events are used to enhance the resident experience and strengthen the Windy Hill community.





AFFORDABLE HOUSING

Housing Management Corporation
One Trinity Drive East, Suite 201
Dillsburg, PA 17019
www.presbyterianseniorliving.org

Presbyterian Senior Living offers 18 spacious and affordable senior living rental communities throughout 10 counties in Pennsylvania. These are managed by the Housing Management Corporation, an entity within the Presbyterian Senior Living organizational structure. The residents and staff at these communities are engaged in supporting their neighborhoods and activities, participating with community hospitals, churches, local town and county agencies as a way of giving back to their broader communities. In addition to having a Community Manager and maintenance staff, Presbyterian Senior Living Housing Management Corporation places a Supportive Services Coordinator in each of its affordable apartment communities. The goal of the Housing Services Department and of each Supportive Services Coordinator is to advocate for and support residents in the communities, providing education and assistance in finding and coordinating specific services that residents may need to continue living independently in their apartments.



Examples of those services available to help residents are applications for food assistance, prescription assistance, and other entitlement applications. The Housing Services Department is constantly striving to create a program that provides optimal support and services to the residents they serve.

The following are select examples of volunteer work: serving on the York County Suicide Prevention Coalition; Jacobus Lioness Club health fair; Alzheimer's Association; Toys for Tots; A.B.A.T.E of PA; Relay for Life; Meals on Wheels; Columbia County Jail ministry.

The on-site community rooms in their buildings are used free of charge for lectures, group meetings, community outreach and neighborhood community events.

Presbyterian Senior Living Locations



ALLENTOWN, PA
Westminster Village at Allentown



BALTIMORE, MD
Heritage Run at Stadium Place



BETHLEHEM, PA
Kirkland Village



BLOOMSBURG, PA
Westminster Place at Bloomsburg



CRESCO, PA
The Shepherds (Hawk's Nest, Wisteria Commons and The Oaks Apartments)



DILLSBURG, PA
CARROLL VILLAGE
Westminster Place at Carroll Village
Moyer House
Schartner House



DOVER, DE
Westminster Village at Dover



EASTON, PA
The Easton Home



GLEN ARM, MD
Glen Meadows
Retirement Community



HARRISBURG, PA
Presbyterian Apartments



HOLLIDAYSBURG, PA
Presbyterian Village at Hollidaysburg



HUNTINGDON, PA
Westminster Woods at Huntingdon



INDIANA, PA
Grace Manor
St. Andrew's Village



LANCASTER, PA
The Long Community at Highland
Westminster Place at Long Community



MECHANICSBURG, PA
Silver Spring Courtyards
Silver Spring Gardens



NEWVILLE, PA
Green Ridge Village



OXFORD, PA
Ware Presbyterian Village



PARKESBURG, PA
Westminster Place at Parkesburg



PHILADELPHIA, PA
Cathedral Village



PHILIPSBURG, PA
Windy Hill Village
Westminster Place at Windy Hill Village



SCRANTON, PA
Geneva House



SHREWSBURY, PA
Shrewsbury Courtyards
Shrewsbury Courtyards II



ST. CLAIRSVILLE, OH
Mark H. Kennedy Park



STEWARTSTOWN, PA
Westminster Place at Stewartstown



WAYNESBORO, PA
Quincy Village
Parker House Assisted Living at Quincy Village
Wesley House at Quincy Village



WILLIAMSPORT, PA
Presbyterian Home at Williamsport



YORK, PA
Stony Brook Gardens
Springwood Overlook
Westminster Place at Queen Street



**PRESBYTERIAN
SENIOR LIVING**

One Trinity Drive East, Suite 201 Dillsburg, PA 17019
717.502.8840 | 800.382.1385
www.presbyterianseniorliving.org