

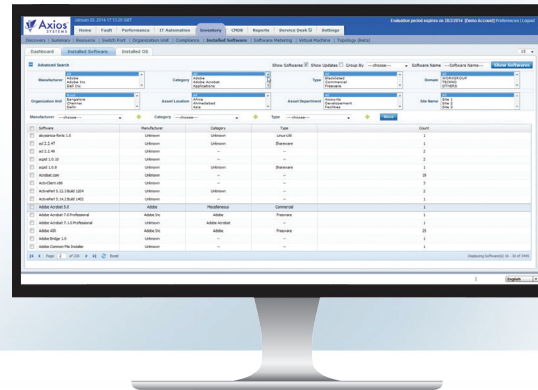
assyst ITAM suite



ITAM: Asset Discovery

Get a complete and accurate view of your IT infrastructure.

Powerful agent-based and agentless discovery technology takes the heavy lifting out of building and maintaining a complete inventory of your IT systems. With assyst ITAM you can automatically discover devices on your network to support the Asset Management, Service Management and Security Management functions.



Discovery Wizard

An intuitive discovery wizard helps you quickly configure the system to collect the infrastructure data you need. Flexible discovery rules and profiles let you discover and refresh data from different parts of your infrastructure at different intervals, depending on your need. You decide what data is collected and when, so you can optimize discovery traffic on your network to fit around business demands.

Agent-based and Agentless Discovery

Discovery of heterogeneous systems such as Windows, Linux, Network Devices, V Centre, Hyper-V and more. Lightweight agents installed on devices send data to assyst ITAM and perform local systems management tasks such as patch management and software installs. Agentless discovery, based on standard network data collection protocols (WMI, SNMP, SSH, WBEM), identifies devices where an agent is not installed to complete the picture of your IT infrastructure.

Topology Mapping

Using a simple 3 step wizard build a comprehensive topology map of all your network devices using SNMP V1-3. The graphical network map shows the nodes directly connected to a seed device IP (i.e., a switch) and its neighbors. Schedule it to automatically run on a recurring basis to capture new devices and changes to your network topology. Use the map to easily navigate to the inventory and performance nodes for efficiency.

Organization Units

Classify your hardware devices into logical groups, based on business unit, OS, IP range or device type to easily target specific asset groups for automation tasks and reporting.

Custom Inventory

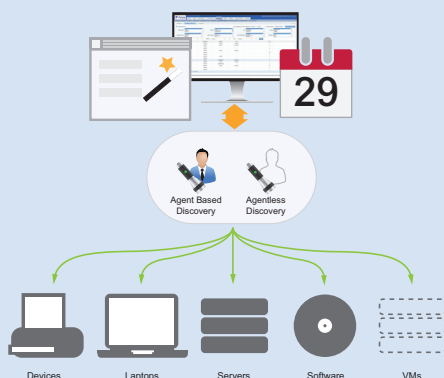
Create custom inventory scans which allow you to query the registry tree or value from target systems. File Trawl feature which supports both Windows and UNIX operating systems.

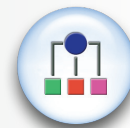
Master Agents

Create master agents to reduce load and bandwidth for remote sites, download software packages and patches to a local master agent and then deploy to all devices within that site.

Asset Discovery Highlights

- Application Discovery and Dependency Mapping
- Agent-based and agentless asset discovery
- Discovery wizard makes configuration easy
- Schedule multiple discovery tasks with different intervals
- Discover desktops, laptops, servers, software, Virtual Machines (VMs) and network components
- Includes a file trawl feature which supports both Windows and UNIX Operating Systems
- Master agents allow you to easily manage remote sites for faster local deployment
- Classify your hardware devices into logical groups, based on business unit, OS, IP range or device type so you can easily target specific asset groups for automation and reporting.
- Discovery dashboard – get an at-a-glance view of discovered assets





Benefits of Asset Discovery with assyst ITAM

■ Reduce costs by automating

In large global organizations manual discovery audits are prohibitively expensive and ineffective, with data becoming quickly out-of-date. Automated discovery takes the time and expense out of an infrastructure audit.

■ Get a complete and accurate view of infrastructure

With automated discovery, you always have an up-to-date view of the full IT infrastructure to support Asset Management, Service Management and strategic IT decision-making.

■ Eliminate redundant assets

Reduce costs by identifying redundant hardware and software assets to be reclaimed or repurposed.

■ Improved Asset Control

Easily identify any missing or stolen devices which have not checked in on the network in a given amount of time.

Schedule the discovery scans to targeted devices, IP ranges or domains. Gain a consolidated view of all the hardware in your environment by device type or Operating System.

■ Security

Having a complete picture of your infrastructure helps you identify weak points and threats. Discovery of unauthorized devices and discrepancies helps you respond quickly to threats and reduce risk.

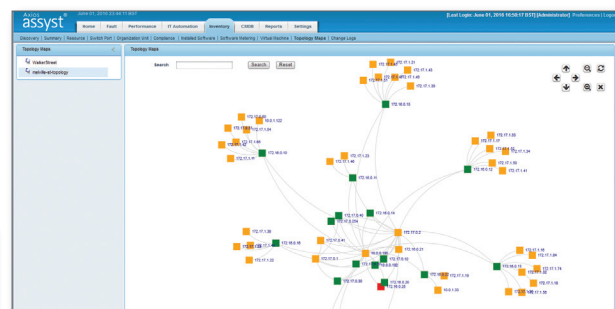
■ Integrated ITAM and ITSM

Tight integration between Asset Management and Service Management means these functions share data and benefit from better data integrity.

Asset Name	Installation Type	OS	Version	Status
10.10.10.10	Windows Server	Windows Server 2008 R2	6.0.6002.18000	Active
10.10.10.11	Windows Server	Windows Server 2008 R2	6.0.6002.18000	Active
10.10.10.12	Windows Server	Windows Server 2008 R2	6.0.6002.18000	Active
10.10.10.13	Windows Server	Windows Server 2008 R2	6.0.6002.18000	Active
10.10.10.14	Windows Server	Windows Server 2008 R2	6.0.6002.18000	Active
10.10.10.15	Windows Server	Windows Server 2008 R2	6.0.6002.18000	Active
10.10.10.16	Windows Server	Windows Server 2008 R2	6.0.6002.18000	Active
10.10.10.17	Windows Server	Windows Server 2008 R2	6.0.6002.18000	Active
10.10.10.18	Windows Server	Windows Server 2008 R2	6.0.6002.18000	Active
10.10.10.19	Windows Server	Windows Server 2008 R2	6.0.6002.18000	Active
10.10.10.20	Windows Server	Windows Server 2008 R2	6.0.6002.18000	Active
10.10.10.21	Windows Server	Windows Server 2008 R2	6.0.6002.18000	Active
10.10.10.22	Windows Server	Windows Server 2008 R2	6.0.6002.18000	Active
10.10.10.23	Windows Server	Windows Server 2008 R2	6.0.6002.18000	Active
10.10.10.24	Windows Server	Windows Server 2008 R2	6.0.6002.18000	Active
10.10.10.25	Windows Server	Windows Server 2008 R2	6.0.6002.18000	Active
10.10.10.26	Windows Server	Windows Server 2008 R2	6.0.6002.18000	Active
10.10.10.27	Windows Server	Windows Server 2008 R2	6.0.6002.18000	Active
10.10.10.28	Windows Server	Windows Server 2008 R2	6.0.6002.18000	Active
10.10.10.29	Windows Server	Windows Server 2008 R2	6.0.6002.18000	Active
10.10.10.30	Windows Server	Windows Server 2008 R2	6.0.6002.18000	Active

Dashboards provide a visual overview of discovered systems

Asset Name	Installation Type	OS	Version	Status
10.10.10.10	Windows Server	Windows Server 2008 R2	6.0.6002.18000	Active
10.10.10.11	Windows Server	Windows Server 2008 R2	6.0.6002.18000	Active
10.10.10.12	Windows Server	Windows Server 2008 R2	6.0.6002.18000	Active
10.10.10.13	Windows Server	Windows Server 2008 R2	6.0.6002.18000	Active
10.10.10.14	Windows Server	Windows Server 2008 R2	6.0.6002.18000	Active
10.10.10.15	Windows Server	Windows Server 2008 R2	6.0.6002.18000	Active
10.10.10.16	Windows Server	Windows Server 2008 R2	6.0.6002.18000	Active
10.10.10.17	Windows Server	Windows Server 2008 R2	6.0.6002.18000	Active
10.10.10.18	Windows Server	Windows Server 2008 R2	6.0.6002.18000	Active
10.10.10.19	Windows Server	Windows Server 2008 R2	6.0.6002.18000	Active
10.10.10.20	Windows Server	Windows Server 2008 R2	6.0.6002.18000	Active
10.10.10.21	Windows Server	Windows Server 2008 R2	6.0.6002.18000	Active
10.10.10.22	Windows Server	Windows Server 2008 R2	6.0.6002.18000	Active
10.10.10.23	Windows Server	Windows Server 2008 R2	6.0.6002.18000	Active
10.10.10.24	Windows Server	Windows Server 2008 R2	6.0.6002.18000	Active
10.10.10.25	Windows Server	Windows Server 2008 R2	6.0.6002.18000	Active
10.10.10.26	Windows Server	Windows Server 2008 R2	6.0.6002.18000	Active
10.10.10.27	Windows Server	Windows Server 2008 R2	6.0.6002.18000	Active
10.10.10.28	Windows Server	Windows Server 2008 R2	6.0.6002.18000	Active
10.10.10.29	Windows Server	Windows Server 2008 R2	6.0.6002.18000	Active
10.10.10.30	Windows Server	Windows Server 2008 R2	6.0.6002.18000	Active



Powerful search functionality lets you quickly find the information you need

IT SERVICE MANAGEMENT & IT ASSET MANAGEMENT SOLUTIONS

"Gartner clients who successfully execute ITAM as a discipline typically achieve 30% cost savings in the first year of their initiatives, and at least 5% cost savings in each of the subsequent five years. Given that software and hardware spending often accounts for 20% of IT budgets, this is a crucial discipline to master."

Gartner
"IT Asset Management Key Initiative Overview"

Axios Systems provides rapid deployment of SaaS and on-premise IT Service Management (ITSM) and IT Asset Management (ITAM) software. Our Service Management software, assyst, is an out-of-the-box solution that transforms IT departments from technology-focused cost centers into profitable business-focused customer service teams.

assyst is accredited for all 16 PinkVERIFY™ ITIL® processes. We were the first technology vendor to achieve this.



linkedin.com/company/axios-systems



@Axios_Systems



blog.axiossystems.com