



Buckeye Power Sales

Quality Equipment Solutions Since 1947

CONSTRUCTION EQUIPMENT GUIDE



YANMAR



snorkel

ERSKINE
ATTACHMENTS LLC

KOHLER
IN POWER. SINCE 1920.

WE'RE TRUSTED BY THE PROFESSIONALS

Family owned and operated since 1947, Buckeye Power Sales is the solutions provider for businesses, contractors, engineers, municipalities, and homeowners. From power generators to light construction to grounds care - we have the equipment, parts & service to help you get the job done.

buckeyepowersales.com

COMPACT TRACK LOADERS



ASV RT-25

Quick specs:

- 24.7HP Perkins 3-cylinder diesel engine
- Operating capacity 665 lbs.
- Operating weight 3755 lbs.
- Tipping load 1900 lbs.
- Height to bucket pin 101"

Features include:

- Hydraulic joystick control
- Aux. pump flow 11.3 gpm
- Manual quick attach
- Radial lift loader arms
- Single speed - maximum travel speed 5.1 mph
- 2-independent torsion axle suspension
- Ground clearance 10"
- Open ROPS standard
- Track width 11"
- Block heater

Optional:

- Cold weather cab
- Turf tracks

ASV RT-40

Quick specs:

- 37.5HP Kubota 3-cylinder, turbo-charged diesel engine
- Operating capacity 931 lbs.
- Operating weight 4175 lbs.
- Tipping load 2660 lbs.
- Height to bucket pin 101"

Features include:

- Hydraulic joystick control
- Aux. pump flow 13.3 gpm
- Manual quick attach
- Radial lift loader arms
- Single speed - maximum travel speed 7.1 mph
- 2-independent torsion axle suspension
- Ground clearance 10.8"
- Open ROPS standard
- Track width 11"
- Block heater

Optional:

- All weather cab
- Cold weather cab
- Turf tracks

ASV RT-65

Quick specs:

- 67HP Deutz 3-cylinder turbo-charged diesel engine
- Operating capacity 1925 lbs.
- Operating weight 7630 lbs.
- Tipping load 5500 lbs.
- Height to bucket pin 116.5"

Features include:

- Hydraulic joystick control
- Aux. pump flow 22.2 gpm
- Manual quick attach
- Radial lift loader arms
- Single speed - maximum travel speed 10.6 mph
- 2-independent torsion axle suspension
- Ground clearance 13"
- Open ROPS standard
- Track width 15"
- Block heater

Optional:

- Hydraulic quick attach
- All weather cab
- Cold weather cab
- Turf tracks
- High flow 27.4 gpm
- Premium hydraulics pkg.

ASV VT-70

Quick specs:

- 65HP Kubota 4-cylinder turbo-charged, liquid-cooled diesel engine
- Operating capacity 2328 lbs.
- Operating weight 8060 lbs.
- Tipping load 6650 lbs.
- Height to bucket pin 126.5"

Features include:

- Hydraulic joystick control
- Aux. pump flow 23 gpm
- Manual quick attach
- Vertical lift loader arms
- 2-speed - maximum travel speed 11 mph
- 2-independent torsion axle suspension
- Ground clearance 13"
- Open ROPS standard
- Track width 15"
- Block heater

Optional:

- Hydraulic quick attach
- All weather cab
- Cold weather cab
- Turf tracks
- High flow 28.4 gpm
- Premium hydraulics pkg.

ASV RT-75

Quick specs:

- 74HP Cummins 4-cylinder intercooled turbo-charged diesel engine
- Operating capacity 2650 lbs.
- Operating weight 9180 lbs.
- Tipping load 7571 lbs.
- Height to bucket pin 125.5"

Features include:

- Hydraulic joystick control
- Aux. pump flow low 22.6 gpm
- Aux. pump flow high 35.7 gpm
- Hydraulic quick attach
- Radial lift loader arms
- 2-speed - maximum travel speed 9.3 mph
- 2-independent torsion axle suspension
- Ground clearance 14.4"
- Open ROPS standard
- Track width 18"
- Block heater

Optional:

- All weather cab
- Suspension air ride seat
- 20" tracks
- Back-up camera
- Premium hydraulics pkg.

ASV RT-120

Quick specs:

- 120HP Cummins 4-cylinder intercooled, turbo-charged diesel engine
- Operating capacity 3535 lbs.
- Operating weight 11,265 lbs.
- Tipping load 10,100 lbs.
- Height to bucket pin 125"

Features include:

- Hydraulic joystick control
- Aux. pump flow low 20 gpm
- Aux. pump flow high 45 gpm
- Hydraulic quick attach
- Radial lift loader arms
- 2-speed - maximum travel speed 10 mph
- 2-independent torsion axle suspension
- Ground clearance 15"
- Open ROPS standard
- Track width 18"
- Block heater
- Back-up camera

Optional:

- All weather cab
- Suspension air ride seat
- 20" tracks



ASV RT-75 HD

Quick specs:

- 74HP Cummins 4-cylinder intercooled turbo-charged diesel engine
- Operating capacity 2650 lbs.
- Operating weight 9180 lbs.
- Tipping load 7571 lbs.
- Height to bucket pin 125.5"

Features include:

- Includes standard features of the RT-75 plus:
- All weather cab & lexan door
- Premium hydraulics package
- Special guarding package
- Back-up camera
- Reversing fan

ASV RT-120 FORESTRY

Quick specs:

- 120HP Cummins 4-cylinder intercooled, turbo-charged diesel engine
- Operating capacity 3535 lbs.
- Operating weight 11,265 lbs.
- Tipping load 10,100 lbs.
- Height to bucket pin 125"

Features include:

- Includes standard features of the RT-120 plus:
- All weather cab w/lexan door
- Forestry guarding package
- Reversing fan
- AM/FM radio w/MP3, speakers



ASV RS-75

Quick specs:

- 74HP Deutz 4-cylinder turbo-charged diesel engine
- Rated operating capacity 2600 lbs.
- Operating weight 7425 lbs.
- Tipping load 5200 lbs.
- Height to bucket pin 125"
- Radial lift loader arms
- Aux. pump flow 21.5 gpm

ASV VS-75

Quick specs:

- 74HP Deutz 4-cylinder turbo-charged diesel engine
- Rated operating capacity 3500 lbs.
- Operating weight 8740 lbs.
- Tipping load 7000 lbs.
- Height to bucket pin 130"
- Vertical lift loader arms
- Aux. pump flow 26 gpm

Features include:

- Pilot hydraulic joystick control
- Auxiliary pump flow 21.5 gpm
- Manual quick attach
- Vertical lift loader arms
- 2-speed - maximum travel speed 11 mph
- Ground clearance 10.5"
- Open ROPS standard
- Block heater

Optional:

- Cold weather cab
- All weather cab
- All weather cab w/premium hydraulics
- Hydraulic quick attach
- High flow hydraulics

SEE PAGE 3 FOR OPTIONAL ATTACHMENTS FOR SKID STEERS & TRACK LOADERS

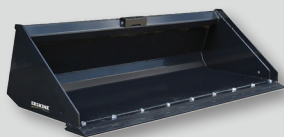
Graphics may show optional accessories not included. Not all products represented in this equipment guide may be available at all locations.



buckeyepowersales.com

TRACK & SKID STEER LOADER ATTACHMENTS

ERSKINE
ATTACHMENTS, LLC



LOW PROFILE BUCKET

- Grade 50 steel side plates
- Excellent cutting edge visibility
- 60" to 84" available
- Opt. cutting edge or tooth bar



6-IN-1 BUCKET

- 66" to 80" available
- Dozing, grappling, leveling, digging, loading & dumping
- 29" grapple opening



GRAPPLE BUCKET

- Independent grapples
- 3000 lbs. cylinders
- Moves sand, dirt, rocks, mud, brush & logs



POWER BROOM

- Torsion Float Suspension
- Fast wafer change time
- Hydraulic drive motor
- 25 degree right & left angle



PICK UP BROOM

- Adjustable arbor mounts allow control over bristle pressure
- Reversible bristle direction
- Covered to control dust
- Curb sweeper optional



EARTH AUGER

- Available in 2", 2.5" hex, 2-9/16" round drive shafts
- Drills vertical & angled holes
- Self cleaning



TRENCHER

- Manual side-shift standard
- Hydraulic motor
- Built-in crumber
- Low & high flow models available



SOIL CONDITIONER

- Tungsten-carbide teeth
- Large solid rubber tires
- Direct-drive motor turns 10" rotor
- Universal mounting plate



LANDSCAPE RAKE

- Picks up material as small as 3/4"
- Adjustable side skids
- Top cover opens hydraulically



PLANER

- Multidirectional tool
- Use for cutting or grading, sod peeling, dirt clod pulverizing
- 78" width x 48.75" length



BREAKER

- Hydraulic
- Hybrid technology (gas/oil)
- Noise & vibration damping
- Internal valve control



CONCRETE BUCKET

- Hauls up to 1/2 yard of concrete
- Safety step
- Removable spout
- Works great in tight areas



PAVEMENT SAW

- Hydraulic depth control
- 9" cutting depth
- Heavy-duty cast rollers
- Guide arm for accurate cuts



ROCK SAW

- Universal mounting plate
- Patented electro-hydraulic side-shift & depth control
- Tungsten carbide teeth



COLD PLANER

- Two tools in one; cut asphalt & concrete w/ the same machine
- Easy to maneuver
- Side-shift moves planer left/right



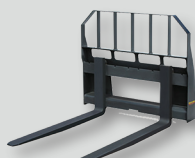
PLATE COMPACTOR

- High vibrating force
- Oil bath around shaft
- Standard or quick-change adapter
- Solid rubber insulators



DUMPING BOX

- Large 2.125 yd³ capacity
- Pneumatic tires
- Pre-drilled holes for drainage
- Mounting plate pivots



PALLET FORKS

- Adjustable width 8" to 45"
- Brick guard
- Quick movement of forks
- 3700# and 5500# available



BRUSH MOWER

- 60" to 84" available
- Cutter capacity up to 3"
- Dual edge cutting blades
- Universal mounting plate



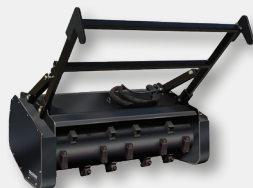
POST DRIVER

- Pile driving technology
- Adjustable variable speed
- Up to 40 blows per minute
- 18 degree tilt each way



GRAPPLE RAKE

- 60" to 84" available
- 2- 3000 lbs. hydraulic cylinders
- Opens to 48"
- Clear brush, pick rocks



FORESTRY MULCHER

- High-strength timing belt
- Adjustable push bar
- Reversible carbide teeth



SNOW BLOWER

- Direct drive hydraulic auger
- Easily adjustable skid shoes
- No shear pins



V-PLOW

- 2-way hydraulic control
- Floating moldboard
- Easily adjustable skid shoes
- Central cutting edge bracket



SNOW PUSHER

- 37" high side panels
- High-carbon steel cutting edge
- Easily adjustable skid shoes
- Tubular steel frame

ADDITIONAL ATTACHMENTS ALSO AVAILABLE. ASK US FOR DETAILS.

Graphics may show optional accessories not included. **Not all products represented in this equipment guide may be available at all locations.**

EXCAVATORS

YANMAR



YANMAR SV08

Quick specs:

- 10.3HP Yanmar 2-cylinder diesel engine
- Operating weight 2348 lbs.
- Digging depth 5'4"

Features include:

- Adjustable width rubber tracks 2'3" up to 2'9"
- Easy accessibility for maintenance
- Foldable ROPS
- 2-way control pattern change
- Variable undercarriage
- Operator-friendly lever controls
- Boom swing function
- Double acting PTO
- Comfortable operator seat with proportional control
- Standard auxiliary hydraulics

Standard equipment:

- Blade
- 14" bucket
- Standard seat
- Seat belt
- Engine warming indicator
- Rubber tracks
- Auxiliary valve & piping (boom end)
- Cylinder cover (boom & blade)



YANMAR ViO17

Quick specs:

- 14.5HP Yanmar 3-cylinder diesel engine
- Operating weight 3836 lbs.
- Digging depth 7'7"

Features include:

- True zero tail swing
- Adjustable width rubber tracks 3'1" up to 4'1"
- 4-pillar ROPS/FOPS canopy
- 2-way control pattern change
- Integrated boom light
- Boom swing function
- Easy accessibility for maintenance
- Comfortable, easy access, walk-through operating station
- Unobstructed view enhances safety
- Powerful, efficient Yanmar engine
- 18" bucket standard

Standard equipment:

- Blade
- 18" bucket
- High back seat
- Adjustable arm rests
- Seat belt
- Pilot joystick controls
- Rubber tracks
- Auxiliary valve & piping (arm end)
- Cylinder cover (boom, arm, bucket, blade)
- Spring steel cylinder rod guards
- Travel levers & pedals
- Traveling alarm

Optional:

- 10" to 24" buckets
- Thumb kit



YANMAR ViO25

Quick specs:

- 20.4HP Yanmar 3-cylinder diesel engine
- Operating weight 5919 lbs.
- Digging depth 10'4"

Features include:

- True zero tail swing
- Hydraulic quick coupler
- Digital Smart Assist Control
- 2-way control pattern change
- Proportional auxiliary hydraulics control
- Boom swing function
- 2-speed drive control standard
- ROPS on standard model
- Auxiliary valve & plumbing

Standard equipment:

- Backfill dozer blade
- Back mirror
- Windshield washer
- Pilot joystick controls
- Rubber tracks
- Adjustable arm rests
- Suspension & reclining seat
- Seat belt
- Dual speed switch
- Auto deceleration switch
- Eco mode switch
- Engine stop switch
- Traveling alarm
- Floor mats

Optional:

- 12" to 36" buckets
- Enclosed cab with heat
- Steel tracks
- Thumb kit



YANMAR ViO35

Quick specs:

- 24.4HP Yanmar 3-cylinder diesel engine
- Operating weight 7905 lbs.
- Digging depth 11'3"

Features include:

- True zero tail swing
- Hydraulic quick coupler
- Digital Smart Assist Control
- 2-way control pattern change
- Proportional auxiliary hydraulics control
- Boom swing function
- 2-speed drive control
- ROPS on standard model
- Auxiliary valve & plumbing

Standard equipment:

- Backfill dozer blade
- Rubber tracks
- Back mirror
- Pilot joystick controls
- Windshield washer
- Arm rests
- Suspension & reclining seat
- Dual speed switch
- Auto deceleration switch
- Eco mode switch
- Engine stop switch
- Traveling alarm
- Floor mats

Optional:

- 12" to 36" buckets
- Enclosed cab with A/C
- Steel tracks
- Thumb kit
- Angle blade
- Counter weights
- Bolt-on track pads



Track & undercarriage flexibility



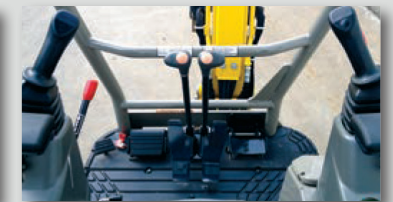
True zero tail swing



Quick coupler system



Pilot joystick controls



Graphics may show optional accessories not included. **Not all products represented in this equipment guide may be available at all locations.**

EXCAVATORS



YANMAR ViO50

Quick specs:

- 39HP Yanmar 4-cylinder diesel engine
- Operating weight 10,417 lbs.
- Digging depth 12'3"

Features include:

- True zero tail swing
- Hydraulic quick coupler
- Digital Smart Assist Control
- 4-pillar ROPS/FOPS canopy
- 2-speed drive control
- Boom swing function
- 2-way control pattern change
- **VIPPS (Progressive 3-pump hydraulics)**

Standard equipment:

- Blade
- Rubber tracks
- Pilot joystick controls
- Cylinder cover (boom, arm, bucket, blade)
- Auxiliary valve & piping (arm end)
- Adjustable arm rests
- Seat belt
- Traveling levers & pedals
- Traveling alarm
- Boom light
- Spring steel cylinder rod guards
- Auto deceleration switch

Optional:

- 12" to 48" buckets
- Cab enclosure w/ AC
- Steel tracks
- Thumb kit
- Angle blade
- Counter weights
- Bolt-on track pads

YANMAR ViO55

Quick specs:

- 47.6HP Yanmar 4-cylinder diesel engine
- Operating weight 11,850 lbs.
- Digging depth 13'6"

Features include:

- True zero tail swing
- Hydraulic quick coupler
- Digital Smart Assist Control
- ROPS/FOPS cabin or canopy
- 2-way control pattern change
- Boom swing function
- 2-speed drive control
- **VIPPS (Progressive 3-pump hydraulics)**

Standard equipment:

- Blade
- Rubber tracks
- Pilot joystick controls
- Auxiliary valve & piping (arm end)
- Adjustable arm rests
- Seat belt
- Traveling levers & pedals
- Traveling alarm
- Boom light
- Suspension & reclining seat
- Spring steel cylinder rod guards
- Auto deceleration switch

Optional:

- 12" to 48" buckets
- Cab enclosure w/ AC
- Steel tracks
- Thumb kit
- Angle blade
- Counter weights
- Bolt-on track pads

YANMAR ViO80

Quick specs:

- 56.9HP Yanmar 4-cylinder diesel engine
- Operating weight 18,136 lbs.
- Digging depth 15'4"

Features include:

- True zero tail swing
- Hydraulic quick coupler
- Digital Smart Assist Control
- ROPS/OPG cabin
- 2-speed drive control
- Boom swing function
- 2-way control pattern change
- Cab enclosure w/AC
- **VIPPS (Progressive 3-pump hydraulics)**

Standard equipment:

- Blade
- Rubber tracks
- Joystick pilot controls
- Adjustable arm rests
- Auxiliary valve & plumbing
- Windshield washer
- Air conditioner
- Defroster
- Suspension & reclining seat
- Auto deceleration switch
- PTO switch
- Eco mode switch
- Engine stop switch
- Traveling alarm
- Floor mats
- Evacuation hammer

Optional:

- 18" to 54" buckets
- Steel tracks
- Thumb kit
- Counter weights
- Bolt-on track pads

YANMAR SV100

Quick specs:

- 72HP Yanmar 4-cylinder diesel engine
- Operating weight 21,550 lbs.
- Digging depth 15'9"

Features include:

- Hydraulic quick coupler
- Digital Smart Assist Control
- Ultra tight turning
- 2-speed drive control
- ROPS/OPG cabin
- Cab enclosure w/AC
- Boom swing function
- 2-way control pattern change
- **VIPPS (Progressive 3-pump hydraulics)**

Standard equipment:

- Blade
- Rubber tracks
- Pilot joystick controls
- Auto deceleration switch
- Auxiliary valve & plumbing
- Windshield washer
- Air conditioner
- Defroster
- Adjustable arm rests
- Suspension & reclining seat
- Seat belt
- PTO switch
- Traveling alarm
- Eco mode switch
- Floor mats
- Evacuation hammer

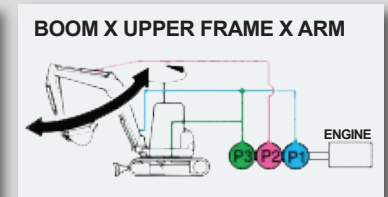
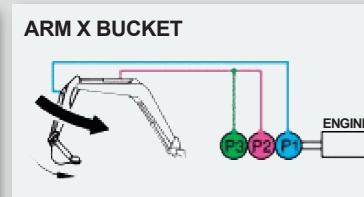
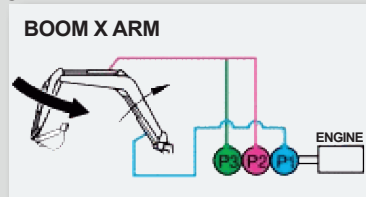
Optional:

- 18" to 54" buckets
- Steel tracks
- Thumb kit
- Counter weights
- Bolt-on track pads

VIPPS Progressive 3-pump hydraulics

Hydraulic circuit fitted with a variable-flow dual piston pump, a gear pump and a multiple combination directional control valve:

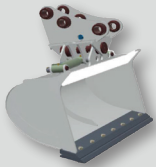
- Increased working speed due to the cumulative pump capacities
- Smooth, simultaneous operation of all functions, even when traveling



SEE PAGE 6 FOR OPTIONAL ATTACHMENTS AVAILABLE FOR EXCAVATORS.

Graphics may show optional accessories not included. **Not all products represented in this equipment guide may be available at all locations.**

EXCAVATOR ATTACHMENTS



YANMAR TILT BUCKETS

A-TLT30-V35DBKP

- 30" ditch tilt bucket
- For ViO25/ViO35

A-TLT36-V35DBKP

- 36" ditch tilt bucket
- For ViO25/ViO35

A-TLT42-V55DBKP

- 42" ditch tilt bucket
- For ViO50/ViO55

A-TLT48-V55DBKP

- 48" ditch tilt bucket
- For ViO50/ViO55

A-TLT42-V80BKP

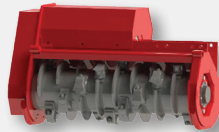
- 42" ditch tilt bucket
- For ViO80/SV100

A-TLT48-V80BKP

- 48" ditch tilt bucket
- For ViO80/SV100

A-TLT54-V80BKP

- 54" ditch tilt bucket
- For ViO80/SV100



YANMAR MULCHING HEADS

55FMX36

- 36" mulching head
- For ViO55

80FMX36

- 36" mulching head
- For ViO80/SV100

80FMX50

- 50" mulching head
- For ViO80/SV100



YANMAR THUMB KIT

- Designed to provide the best gripping and bucket meshing
- Available for ViO17/ ViO25/ ViO35/ ViO55/ ViO80/ SV100



YANMAR TAMPERS

SPV310

- Weight class 2.5-6 ton
- A/B 23.3" / 11.8"
- Oil flow 7.9/13.2 gpm
- Operating pressure 2610 psi
- For ViO35/ViO50/ViO55

SPV410

- Weight class 6-11 ton
- A/B 31.5" / 15.75"
- Oil flow 18.5/23.7 gpm
- Operating pressure 2610 psi
- For ViO80/SV100



YANMAR TREE SHEARS

SHEAR 12

- Rotating shear
- 12" cut diameter
- For ViO80/SV100

SHEAR14

- Non-rotating shear
- 14" cut diameter
- For ViO80/SV100



YANMAR AUGER MOTORS

CS-1

- 5-15 GPM
- 26-78 RPM
- For SV-08/ViO17/ViO25

CS-2

- 10-25 GPM
- 41-102 RPM
- For ViO35/ViO50/ViO55

CS-4

- 20-35 GPM
- 59-103 RPM
- For ViO80/SV100



YANMAR AUGER BIT

All standard bits 48" length

- 135546 6" diameter
- 135547 9" diameter
- 135548 12" diameter
- 135549 15" diameter
- 135550 18" diameter
- 135551 24" diameter
- 135552 30" diameter
- 135553 36" diameter



YANMAR BREAKERS

SB165

- Max. frequency 1200 bpm
- Breaker weight 363 lbs.
- For use with ViO25

SB210

- Max. frequency 1100 bpm
- Breaker weight 463 lbs.
- For use with ViO35/ViO50

SB300

- Max. frequency 1000 bpm
- Breaker weight 661 lbs.
- For use with ViO55

SB400

- Max. frequency 900 bpm
- Breaker weight 904 lbs.
- For use with ViO80

SB530

- Max. frequency 900 bpm
- Breaker weight 1169 lbs.
- For use with SV100

SB910

- Max. frequency 900 bpm
- Breaker weight 2095 lbs.
- For use with SV100

WHEEL LOADERS



YANMAR V4

Quick specs:

- 40.9HP Yanmar 4-cylinder diesel engine
- Operating weight 8014 lbs.
- Tipping load 6070 lbs. (straight)
- Tipping load 5058 lbs. (articulated)

Features include:

- Hydrostatic drive
- 4-wheel drive
- Rear axle oscillation
- Standard bucket capacity 0.65 yd³
- Auto leveler
- Canopy on standard model
- Maximum travel speed 11.8 mph

Optional:

- Enclosed cab w/AC
- Hydraulic quick coupler
- High volume bucket 0.91 yd³



YANMAR V8

Quick specs:

- 61HP Deutz 4-cylinder diesel engine
- Operating weight 10,802 lbs.
- Tipping load 8311 lbs. (straight)
- Tipping load 7341 lbs. (articulated)

Features include:

- Hydrostatic drive
- 4-wheel drive from reduction gear
- Rear axle oscillation
- Standard bucket capacity 1.05 yd³
- Multi-function joystick
- Cab enclosure w/AC
- Maximum travel speed 22 mph

Optional:

- Hydraulic quick coupler
- Light material bucket 1.57 yd³



YANMAR V10

Quick specs:

- 74HP Deutz 4-cylinder diesel
- Operating weight 12,786 lbs.
- Tipping load 9634 lbs. (straight)
- Tipping load 8510 lbs. (articulated)

Features include:

- Hydrostatic drive
- 4-wheel drive from reduction gear
- Rear axle oscillation
- Standard bucket capacity 1.31 yd³
- Multi-function joystick
- Cab enclosure w/AC
- Maximum travel speed 22 mph

Optional:

- Hydraulic quick coupler
- Light material bucket 2.03 yd³



YANMAR V12

Quick specs:

- 100 HP Deutz 4-cylinder turbo diesel
- Operating weight 15,432 lbs.
- Tipping load 11,023 lbs. (straight)
- Tipping load 9700 lbs. (articulated)

Features include:

- Hydrostatic drive
- 4-wheel drive from reduction gear
- Rear axle oscillation
- Standard bucket capacity 1.57 yd³
- Multi-function joystick
- Cab enclosure w/AC
- Maximum travel speed 22 mph

Optional:

- Hydraulic quick coupler
- Light material bucket 2.35 yd³

Graphics may show optional accessories not included. **Not all products represented in this equipment guide may be available at all locations.**



buckeyepowersales.com

TRACKED CARRIERS



YANMAR C30R-3

Quick specs:

- 46HP Yanmar 4-cylinder diesel
- Operating weight 5843 lbs.
- Maximum payload 5513 lbs.

Features include:

- One-way dump
- 58° dumping angle
- 4-pillar ROPS/FOPS canopy
- Steel reinforced rubber tracks
- Travel speed 6.2 mph
- Ground clearance 1'6"



YANMAR C30R-3R

Quick specs:

- 46HP Yanmar 4-cylinder diesel
- Operating weight 5843 lbs.
- Maximum payload 5513 lbs.

Features include:

- Swivel dump
- 58° dumping angle
- 4-pillar ROPS/FOPS canopy
- Steel reinforced rubber tracks
- Travel speed 6.2 mph
- Ground clearance 1'6"

COMPACT UTILITY LOADERS



TORO 323

Quick specs:

- 23HP Kohler engine
- Operating capacity 515 lbs.
- Operating weight 1567 lbs.
- Tip capacity 1030 lbs.

Features include:

- 4-Paw Independent
- 4-wheel drive
- Ride-on operator platform
- 2-ground speeds
- 2-pump hydraulic system
- Quick attach system



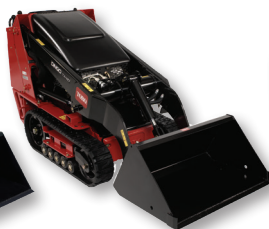
TORO 320D

Quick specs:

- 20HP Kubota diesel engine
- Operating capacity 524 lbs.
- Operating weight 1722 lbs.
- Tip capacity 1048 lbs.

Features include:

- 4-Paw Independent
- 4-wheel drive
- 2-ground speeds
- 2-pump hydraulic system
- Quick attach system



TORO TX427

Quick specs:

- 25HP Kohler engine
- Operating capacity 535 lbs.
- Operating weight 1882 lbs.
- Tip capacity 1530 lbs.

Features include:

- Narrow track standard (5.9" wide)
- Walk behind
- Exclusive TX controls
- Kevlar reinforced tracks
- 4-pump hydraulic system
- Quick attach system

Optional:

- Wide tracks (9.5" wide)
- Operator platform



TORO TX525

Quick specs:

- 23.3HP Kubota liquid cooled diesel engine
- Operating capacity 553 lbs.
- Operating weight 1904 lbs.
- Tip capacity 1580 lbs.

Features include:

- Narrow track standard (5.9" wide)
- Walk behind
- Exclusive TX controls
- Kevlar reinforced tracks
- 4-pump hydraulic system
- Quick attach system

Optional:

- Wide tracks (9.5" wide)
- Operator platform



TORO TX1000

Quick specs:

- 24.9HP Kubota liquid cooled diesel engine
- Operating capacity 1000 lbs.
- Operating weight 2610 lbs.
- Tip capacity 2857 lbs.

Features include:

- Narrow track standard (5.9" wide)
- Ride-on operator platform
- Vertical lift
- Hinge pin height 81"
- Effortless control system
- Ground speed 4.7 mph
- Quick attach system

Optional:

- Wide tracks (9.5" wide)



TORO TXL2000

Non-Telescoping

Quick specs:

- 49.6HP Kubota diesel
- Operating capacity 2000 lbs.
- Operating weight 6235 lbs.
- Tip capacity 5715 lbs.

Features include:

- 360° visibility
- 54" wide frame
- Hinge pin height 98.6"
- Selectable traction speed
- Easy to use control interface



TORO TXL2000

Telescoping

Includes standard features on non-telescoping plus:

- Telescoping arms up to 123" high
- Rated operating capacity 920 lbs. (extended)
- Operating weight 6655 lbs.
- Tip capacity 2620 lbs. (extended)
- Hinge pin height 123.4"

OPTIONAL ATTACHMENTS FOR COMPACT UTILITY LOADERS

EARTH MOVING

- 22426 power box rake
- 22445 tiller
- 23102 soil cultivator
- 23163 backhoe w/13" bucket
- 23165 leveler
- 22414 utility blade
- 22911 vibratory plow
- 22474 high speed trencher head
- 22533 TXL2000 trencher head
- 22536 TXL2000 power rake

AUGERS & TREE CARE

- 22429 stump grinder
- 22438 tree fork
- 22521 grapple rake
- 22805 high torque power head
- 22806 universal swivel auger power head
- 6" to 30" auger bits available
- 22532 TXL2000 auger drive
- 22534 TXL2000 brushcutter

MATERIAL HANDLING

- 22423 multi-purpose tool
- 22442 cement bowl
- 22341 adjustable forks
- 23135 concrete breaker
- 22535 TXL2000 grapple
- 22541 TXL2000 skeleton grapple
- 22549 TXL2000 adj. forks
- 22538 TXL2000 angle broom

BUCKETS

- 22409 standard
- 22340 TX1000 standard
- 22342 TX1000 high volume narrow bucket
- 22520 TXL2000 standard
- 22547 TXL2000 high volume
- 22548 TXL2000 grading
- 22573 TXL2000 stump

Graphics may show optional accessories not included. **Not all products represented in this equipment guide may be available at all locations.**

TRENCHERS



TORO TRX-16

Quick specs:

- 16HP Kawasaki V-Twin engine
- Recoil start



TORO TRX-20

Quick specs:

- 20HP Kawasaki V-Twin engine
- Electric start



TORO TRX-26

Quick specs:

- 26HP Kawasaki V-Twin engine
- Electric start

TRX Trencher Features include

- Toro exclusive TRX control system
- High hydraulic flow
- Pivoting trencher head
- Boom depth options 24", 36" & 48"
- Boom width options 4", 6" & 8" (TRX-26)
- 3-pump hydraulic system
- Track width 5.9"

Available chain types

- Soil cup tooth
- Combo chain (rock & soil)
- Shark welded rock tooth
- Bullet style rock tooth

VIBRATORY PLOW



TORO PRO SNEAK™

Quick specs

- 36.8HP Yanmar liquid-cooled diesel engine
- Operating weight 2930 lbs.

Features include:

- Hydrostatic drive & steering
- Plowing up to 24" depth
- 10 degree frame oscillation
- Articulation to 28°

Optional:

- Front mounted trencher drive
- 24" or 36" trencher boom
- Chains (cup, combo or shark teeth)
- Hydra-borer system

LOG SPLITTERS



Features include:

- Horizontal/vertical operation
- 12 second cycle time
- Spring-loaded lock pin
- 9" solid steel splitting wedge
- Strong I-beam
- Light brackets
- Heavy-duty catch assembly

22618 / LS-922

8HP Honda engine, operating weight 909 lbs., 22 ton splitting force

STUMP GRINDERS



TORO SGR

Features include:

- Well balanced & compact
- Lift handles
- Heavy-duty centrifugal clutch

22600 / SGR-6

6.5HP Honda engine, 6" below grade cutting depth, 10" above grade cutting height

22615 / SGR-13

13HP Honda engine, 11" below grade cutting depth, 14" above grade cutting height



TORO STX

Features include:

- Intelli-Sweep™ automatically adjusts sweep speed based on load on the wheel
- Toro exclusive Traction Control System

23208 / STX-26

23.5HP Kawasaki engine, 12.5" below grade cutting depth, 35" above grade cutting height

23214 / STX-38

38HP Kohler Command Pro EFI engine, 18" below grade cutting depth, 35" above grade cutting height

CUT-OFF MACHINES



STIHL TS410

Features include:

- 66.7cc engine
- 12" max. wheel
- IntelliCarb™ carburetor
- X2 air filtration system
- Anti-vibration system
- Weighs 21 lbs.



STIHL TS420

Features include:

- 66.7cc engine
- 14" max. wheel
- IntelliCarb™ carburetor
- X2 air filtration system
- Anti-vibration system
- Weighs 21 lbs.



STIHL TS440

Features include:

- 66.7cc engine
- 14" max. wheel
- Electronic Water Control
- X2 air filtration system
- Anti-vibration system
- STIHL ElastoStart
- Weighs 25 lbs.



STIHL TS500i

Features include:

- 72.2cc EFI engine
- 14" max. wheel
- Electronic Water Control
- X2 air filtration system
- Anti-vibration system
- STIHL ElastoStart
- Weighs 23 lbs.



STIHL TS700

Features include:

- 98.5cc engine
- 14" max. wheel
- IntelliCarb™ carburetor
- X2 air filtration system
- Anti-vibration system
- STIHL ElastoStart
- Weighs 26 lbs.



STIHL TS800

Features include:

- 98.5cc engine
- 16" max. wheel
- IntelliCarb™ carburetor
- X2 air filtration system
- Anti-vibration system
- STIHL ElastoStart
- Weighs 28 lbs.

OPTIONAL DIAMOND WHEELS FOR CUT-OFF MACHINES

- **A5 ECONOMY GRADE** - asphalt, green concrete, sandstone, limestone, slate applications. 12"/14"/16" diameters
- **B10 ECONOMY GRADE** - cinder block, pavers, concrete, reinforced concrete, brick applications. 12"/14"/16" diameters
- **A20 QUALITY GRADE** - asphalt, green concrete, sandstone, limestone, slate applications. 12"/14"/16" diameters
- **A80 PREMIUM GRADE** - asphalt, green concrete, sandstone, limestone, slate applications. 12"/14"/16" diameters
- **B20 QUALITY GRADE** - cinder block, pavers, reinforced concrete, brick, heavily reinforced concrete. 12"/14"/16" diameters.
- **B80 PREMIUM GRADE** - cinder block, pavers, concrete, reinforced concrete, brick, heavily reinforced concrete, granite & natural stone. 12"/14"/16" diameters.

Graphics may show optional accessories not included. **Not all products represented in this equipment guide may be available at all locations.**



buckeyepowersales.com

CONCRETE & MORTAR MIXERS



TORO CONCRETE

- Features include:**
- Replaceable steel mixing blades
 - Polyethylene drum

68001 / CM-250E-PC
3/4 HP electric, 2 cu. ft. capacity, wheel barrow & pedestal combo

68003 / CM-250E-PWB
3/4HP electric, 2 cu. ft. capacity, wheel barrow



TORO CONCRETE

- Features include:**
- Oversized steel paddles
 - Reinforced cowl
 - 1-piece cast iron ring gear

68004 / CM-658H-S
Honda engine, 6 cu. ft. capacity, steel drum

68006 / CM-958H-S
Honda engine, 9 cu. ft. capacity, steel drum

68007 / CM-958H-SED
Honda engine, 9 cu. ft. capacity, steel drum w/ end dump



TORO CONCRETE

- Features include:**
- Oversized steel paddles
 - Reinforced cowl
 - 1-piece cast iron ring gear

68008 / CM-958H-PED
Honda engine, 9 cu. ft. capacity, plastic drum w/ end dump

68009 / 958H-P
Honda engine, 9 cu. ft. capacity, plastic drum

68011 / CM-1258Y-SD
Yanmar diesel engine, 12 cu. ft. capacity, steel drum



TORO MORTAR

- Features include:**
- Patented drum latch & front post latch
 - Multi-point bag splitter
 - Lift away heavy-duty safety guards
 - Patented guard lifter

68017 / MM-658H-P
Honda engine, 6 cu. ft. capacity, plastic drum

68021 / MM-858H-P
Honda engine, 8 cu. ft. capacity, plastic drum

68024 / MM-12511H-S
Honda engine, 12 cu. ft. capacity, steel drum



TORO ULTRA MIX MORTAR

- Features include:**
- Patented paddle
 - Symmetrical drum
 - Steel drum

60212 / MMX-650E-S
1.5HP electric, 6 cu. ft. capacity

60213 / MMX-655-S
Honda engine, 6 cu. ft. capacity

60216 / MMX-658H-S
Honda engine, 6 cu. ft. capacity

60219 / MMX-850E-S
2HP electric, 8 cu. ft. capacity

60220 / MMX-858H-S
Honda engine, 8 cu. ft. capacity



TORO POLYETHYLENE ULTRA MIX MORTAR

- Features include:**
- Patented paddle design
 - Symmetrical drum
 - Open engine cowl
 - Solid steel dump handle
 - Polyethylene drum
 - Telescoping axle

60217 / MMX658K-P
9.5HP Kohler engine, 6 cu. ft. capacity

60221 / MMX-858K-P
9.5HP Kohler engine, 8 cu. ft. capacity

COMPACTORS



TORO FORWARD PLATE

- Features include:**
- Patented water system
 - Self cleaning open base plate
 - Heavy-duty dual stage shock mounts
 - Removeable water tank
 - Travel up to 130 ft./min.

68025 / FP-2200
Honda engine, 2200 lbs. force, 13" x 21" plate

68026 / FP-3000
Honda engine, 3000 lbs. force, 20" x 24" plate

68027 / FP-4000
Honda engine, 4000 lbs. force, 20" x 24" plate



TORO REVERSIBLE PLATE

- Features include:**
- Smooth travel speed
 - For soils, sand & gravel
 - Easy to operate controls

68071 / RP-500
Honda engine, 4946 lbs. force, 15.75" x 25" plate

68072 / RP-700
Honda engine, 7194 lbs. force, 20" x 30" plate

68073 / RP-1200
Honda engine, 11,691 lbs. force, 24" x 34" plate

68074 / RP-1200D
Hatz diesel engine, 11,691 lbs. force, 24" x 34" plate

68075 / RP-1400D
Hatz diesel engine, 14,164 lbs. force, 30" x 35" plate

RAMMERS



- Features include:**
- High impact poly shoe w/ steel reinforced base plate
 - Rubber shock mounts
 - Wrap around handle

68034 / VR-2650
Honda engine, 2650 lbs. force

68035 / VR-3100
Honda engine, 3100 lbs. force

68036 / VR-3500
Honda engine, 3500 lbs. force



- Features include:**
- Patented Dyna-Clutch
 - Adjustable handle
 - Combo blades

68048 / PT-36
Honda engine, 36" diameter

68049 / PT-36PP
Honda engine, 36" diameter, Pro-Pitch™ blade adjustment

68050 / PT-46
Honda engine, 46" diameter

68051 / PT-46PP
Honda engine, 46" diameter, Pro-Pitch™ blade adjustment

POWER TROWELS

MUD BUGGY



TORO MB-1600

- Quick specs:**
- 11.7HP Honda engine
 - Capacity 16 cu. ft.
 - Max. load capacity 1875#(single wheel); 2500#(double wheel)
 - Operating weight 1370#

- Features include:**
- Hydraulic dump system
 - Dual action dump pedal
 - Oversize brake pedal
 - Quick-disconnect tires
 - Polyethylene tub
 - Max. ground speed 7 mph



TORO MB-TX-2500

- Quick specs:**
- 25HP Kohler engine
 - Capacity 16 cu. ft.
 - Max. load capacity 2500 #
 - Operating weight 1640#

- Features include:**
- Kevlar reinforced tracks
 - Effortless traction controls
 - Auto-return dump
 - Suspended, ride-on platform
 - Max. ground speed 6 mph

TOW POLE AVAILABLE FOR ALL CONCRETE & MORTAR MIXERS

Graphics may show optional accessories not included. **Not all products represented in this equipment guide may be available at all locations.**

AERIAL WORK PLATFORMS



MATERIAL



MATERIAL

- Features include:**
- 2-speed winch
 - Quick fold stabilizers
 - Passes thru std. doorway

ML12M

Lift height 12'6.5" (forks up)
10'10" (forks down)
Operating length 5'8"
Max. load capacity 700 lbs.

ML20M

Lift height 19'8" (forks up)
Lift height 17'11" (forks down)
Operating length 5'8"
Max. load capacity 600 lbs.

SCISSOR LIFTS



LOW LEVEL

- Features include:**
- Passes thru std. doorway
 - Non-marking casters
 - Push around

S3006P

Max. platform height 6'6"
Overall length 3'11"
Overall width 2'4"
Platform capacity 529 lbs.

S3008P

Max. platform height 8'2"
Overall length 3'11"
Overall width 2'3"
Platform capacity 500 lbs.

S3010P

Max. platform height 9'10"
Overall length 3'11"
Overall width 2'3"
Platform capacity 430 lbs.



ELECTRIC

- Features include:**
- Roll-out deck extension
 - Integrated battery charger
 - Self-propelled

S3010E

Max. platform height 9'11"
Overall length 49.6"
Overall width 30.3"
Platform capacity 500 lbs.
(No roll-out deck ext.)

S3215E

Max. platform height 15'
Overall length 70.2"
Overall width 32"
Platform capacity 600 lbs.

S3215L

Max. platform height 15'
Overall length 81"
Overall width 32"
Platform capacity 670 lbs.



ELECTRIC

- Features include:**
- Roll-out deck extension
 - Integrated battery charger
 - Self-propelled

S3219E

Max. platform height 19'
Overall length 70.2"
Overall width 32"
Platform capacity 550 lbs.

S3220E

Max. platform height 20'
Overall length 90.6"
Overall width 32"
Platform capacity 900 lbs.

S3226E

Max. platform height 26'
Overall length 90.6"
Overall width 32"
Platform capacity 500 lbs.

S4726E

Max. platform height 26'
Overall length 90.6"
Overall width 47"
Platform capacity 1000 lbs.

S4732E

Max. platform height 32'
Overall length 90.6"
Overall width 47"
Platform capacity 700 lbs.



ROUGH TERRAIN

- Features include:**
- 4-wheel drive
 - 4-hydraulic stabilizers
 - Oscillating axle
 - 22.5HP Kubota diesel
 - Opt. dual fuel models

S2255RT

Max. platform height 27'3"
Overall length 10'9"
Overall width 4'9"
Platform capacity 926 lbs.

S2755RT

Max. platform height 27'6"
Overall length 10'9"
Overall width 4'9"
Platform capacity 661 lbs.

S2770RT / S2770BE¹

Max. platform height 27'
Overall length 11'
Overall width 5'10"
Platform capacity 1250 lbs.

S3370RT / S3370BE¹

Max. platform height 33'
Overall length 11'
Overall width 5'10"
Platform capacity 1000 lbs.

S3970RT / S3970BE¹

Max. platform height 39'
Overall length 11'
Overall width 5'10"
Platform capacity 771 lbs.

¹BI-ENERGY POWER SYSTEM



SPEED LEVEL

- Features include:**
- Auto platform leveling
 - Powerful 4 wheel drive
 - Rough terrain
 - Fold-down guardrails
 - High grip, all-terrain tires
 - Proportional controls
 - Power line to platform
 - Oscillating front axle
 - Dual multi-disc brakes
 - All motion alarm
 - Descent alarm
 - Roll-out deck extension (SL26SL only)
 - High grip, open deck tread (SL30SL only)

SL26SL

Max. platform height 25'6"
Overall length 12'5"
Overall width 7'
Platform capacity 1500 lbs.

SL30SL

Max. platform height 29'4"
Overall length 14'1"
Overall width 7'
Platform capacity 1300 lbs.



MAST LIFTS



PUSH AROUND

- Features include:**
- Girder lock telescopic mast
 - Ground level entry
 - Passes thru std. doorway

UL25

Max. platform height 24'11"
Overall length 4'2"
Overall width 2'5"
Platform capacity 350 lbs.

UL32

Max. platform height 31'9"
Overall length 4'4"
Overall width 2'5"
Platform capacity 300 lbs.

UL40

Max. platform height 40'
Overall length 4'4"
Overall width 2'5"
Platform capacity 300 lbs.

MAST LIFTS



SELF-PROPELLED

- Features include:**
- Saloon-door entry gates
 - Roll-out deck extension
 - Joystick controls
 - Crane lift points
 - Integrated battery charger

TM12E

Max. platform height 12'
Overall length 4'6"
Overall width 2'6"
Platform capacity 500 lbs.



SELF-PROPELLED

- Features include:**
- Saloon-door entry gates
 - Roll-out deck extension
 - Joystick controls
 - Crane lift points
 - Integrated battery charger

TM16E

Max. platform height 16'
Overall length 4'6"
Overall width 2'6"
Platform capacity 500 lbs.

OPTIONAL ATTACHMENTS FOR AERIAL LIFTS

- Aircraft package
- Deluxe aircraft package
- Cold weather package
- Extreme cold weather package
- Lights package
- Glazier package
- Tow kit
- Extreme environmental package
- 10kW generator package
- 12kW generator/welder package
- Tunnel package

Graphics may show optional accessories not included. **Not all products represented in this equipment guide may be available at all locations.**



buckeyepowersales.com

AERIAL WORK PLATFORMS



BOOM LIFTS



ELECTRIC

Features include:

- Tight inside turning radius
- Non-marking tires
- Joystick controls
- Tilt alarm
- 2 persons capacity indoor
- 1 person capacity outdoor
- Automatic battery charger
- Automatic battery fill
- Power line to platform
- Hour meter
- On-board diagnostics

Optional

- Special paint colors
- Flashing amber light
- Environmental green oil

MB20J

Max. platform height 20'
Max. horizontal reach 8'6"
Overall length 7'11"
Overall width 31"
Platform capacity 425 lbs.

MB26J

Max. platform height 25'6"
Max. horizontal reach 9'10"
Overall length 9'2"
Overall width 39"
Platform capacity 475 lbs.

SNORKEL GUARD



ELECTRIC

Features include:

- **Snorkel Guard**
- Proportional controls
- Hydraulic platform rotation
- Zero tailswing
- Tilt alarm
- Indoor or outdoor use
- Power line to platform
- Drive motion alarm
- Flashing amber light
- Hour meter
- On-board diagnostics display

Optional

- Special paint colors
- 5' aluminum platform swing gate
- Dual fuel
- Tool tray

A38E

Max. platform height 37'7"
Max. horizontal reach 18'4"
Overall length 13'4.8"
Overall width 4'11"
Operating weight 9140 lbs.
Platform capacity 475 lbs.

A46JE

Max. platform height 46'3"
Max. horizontal reach 24'11"
Overall length 18'4"
Overall width 5'8"
Operating weight 15,100 lbs.
Platform capacity 500 lbs.

Zero tailswing



ARTICULATED

Features include:

- **Snorkel Guard**
- 4-wheel drive
- Hydraulic platform rotation
- Proportional controls
- Tri-entry platform
- Power line to platform

A46JRT

24.9HP Kubota diesel
Max. platform height 46'11"
Max. horizontal reach 24'11"
Overall length 18'4"
Overall width 6'10"
Operating weight 16,620 lbs.
Platform capacity 500 lbs.

AB60J

59HP Kubota turbo diesel
Max. platform height 60'
Max. horizontal reach 43'1"
Overall length 29'2"
Overall width 7'11.5"
Operating weight 24,800 lbs.
Platform capacity 500 lbs.

AB62JRT

48.9HP Kubota turbo diesel
Max. platform height 61'8"
Max. horizontal reach 36'6"
Overall length 28'2.5"
Overall width 8'
Operating weight 23,500 lbs.
Platform capacity 500 lbs.

AB80J

59HP Kubota turbo diesel
Max. platform height 79'11"
Max. horizontal reach 59'5"
Overall length 32'2"
Overall width 8'6"
Operating weight 36,800 lbs.
Platform capacity 500 lbs.

AB85J

59HP Kubota turbo diesel
Max. platform height 90'6"
Max. horizontal reach 61'11"
Overall length 41'2"
Overall width 8'6"
Operating weight 36,800 lbs.
Platform capacity 500 lbs.

TELESCOPIC

Features include:

- **Snorkel Guard**
- 4-wheel drive
- Hydraulic platform rotation
- Oscillating axle
- Proportional controls
- Tri-entry platform
- Power line to platform
- With or without jib boom

400S

24.9HP Kubota diesel
Max. platform height 40'
Max. horizontal reach 33'
Stowed length 24'10"
Overall width 7'10"
Operating weight 14,550 lbs.
Platform capacity 600 lbs.

460SJ

24.9HP Kubota diesel
Max. platform height 46'
Max. horizontal reach 40'
Stowed length 28'5"
Overall width 7'10"
Operating weight 17,500 lbs.
Platform capacity 600 lbs.

600S

Cummins diesel engine
Max. platform height 60'
Max. horizontal reach 52'2"
Stowed length 30'2"
Overall width 7'10"
Operating weight 21,730 lbs.
Platform capacity 600 lbs.

660SJ

Cummins diesel engine
Max. platform height 66'
Max. horizontal reach 59'
Stowed length 34'5"
Overall width 7'10"
Operating weight 28,850 lbs.
Platform capacity 600 lbs.

TELESCOPIC

Features include:

- **Snorkel Guard**
- 4-wheel drive
- Hydraulic platform rotation
- Oscillating axle
- Proportional controls
- Tri-entry platform
- Power line to platform
- With or without jib boom

TB80

59HP Kubota turbo diesel
Max. platform height 80'
Max. horizontal reach 71'2"
Overall length 38'8"
Overall width 8'6"
Operating weight 36,332 lbs.
Platform capacity 500 lbs.

TB86J

59HP Kubota turbo diesel
Max. platform height 86'
Max. horizontal reach 78'3"
Overall length 42'3"
Overall width 8'6"
Operating weight 36,690 lbs.
Platform capacity 500 lbs.

TB120

59HP Kubota turbo diesel
Max. platform height 120'
Max. horizontal reach 62'
Overall length 42'3"
Overall width 8'6"
Operating weight 39,500 lbs.
Platform capacity 500 lbs.

TB126J

59HP Kubota turbo diesel
Max. platform height 126'
Max. horizontal reach 62'11"
Overall length 44'9"
Overall width 8'6"
Operating weight 42,150 lbs.
Platform capacity 500 lbs.

TOWABLE

Features include:

- Articulating/telescopic
- Hydraulic stabilizers
- Integral road lighting board
- Controls at platform
- Power line to platform
- In-line boom design

Optional

- Special paint colors
- Work lights in platform
- Flashing amber light
- Airline to platform
- Nylon spreader pads (set of 4)
- Gasoline power
- 110V/220V AC power

TL37J

Max. platform height 35'9"
Max. horizontal reach 18'5"
Towing length 20'11"
Towing width 5'3"
Platform capacity 475 lbs.

TL39

Max. platform height 37'9"
Max. horizontal reach 21'
Towing length 15'5"
Towing width 5'3"
Platform capacity 475 lbs.

TL49J

Max. platform height 48'1"
Max. horizontal reach 27'10"
Towing length 23'3"
Towing width 5'8"
Platform capacity 425 lbs.



Designed by Snorkel's in-house engineering team, the system features a spring-loaded rail mounted above the platform controls, which cuts-out machine operations when pressure is applied.

Graphics may show optional accessories not included. **Not all products represented in this equipment guide may be available at all locations.**

AERIAL WORK PLATFORMS

TELEHANDLERS



SNORKEL ROUGH TERRAIN

Features include:

- Full time 4-wheel drive
- 4-wheel steer
- Variable speed hydrostatic
- Proportional joystick controls

SR5719

Max. lift height 19'
Max. lift capacity 5732 lbs.
Max. forward reach 10'4"
Ground clearance 9"

SNORKEL ROUGH TERRAIN

Features include:

- Full time 4-wheel drive
- 4-wheel steer
- Variable speed hydrostatic
- Proportional joystick controls

SR630

Max. lift height 30'7"
Max. lift capacity 6000 lbs.
Max. forward reach 18'5"
Ground clearance 1'2"

SNORKEL ROUGH TERRAIN

Features include:

- Full time 4-wheel drive
- 4-wheel steer
- Variable speed hydrostatic
- Proportional joystick controls

SR9244

Max. lift height 44'4"
Max. lift capacity 9260 lbs.
Max. forward reach 31'2"
Ground clearance 1'2"

SNORKEL ROUGH TERRAIN

Features include:

- Full time 4-wheel drive
- 4-wheel steer
- Variable speed hydrostatic
- Proportional joystick controls

SR1054

Max. lift height 53'9"
Max. lift capacity 10,000 lbs.
Max. forward reach 41'4"
Ground clearance 1'2"

MOBILE AIR COMPRESSORS



ATLAS COPCO

XAS110

Features include:

- Kubota D902TF diesel engine
- 110 CFM free air delivery
- Lightweight & efficient
- HardHat® canopy
- Anti-air lock system
- Battery cut off switch



ATLAS COPCO

XAS185

Features include:

- 49HP Kubota diesel engine
- 185 CFM free air delivery
- User friendly controller
- Easy access to filters
- Road lights standard
- Extremely durable body



ATLAS COPCO

XA(T)S400

Features include:

- 115HP John Deere diesel
- 400-440 CFM free air delivery
- PACE™ Pressure Adjusted thru Cognitive Electronics
- Pressure can be set with XC2003 controller in 3 steps



ATLAS COPCO HiLight V4 / V5+

Features include:

- 4-heavy duty stabilizers
- HardHat® lightweight canopy
- 28 gallon fuel tank
- Independent circuit breakers
- Hour meter & key switch
- 120V GFCI duplex outlet
- Kubota Z482 liquid-cooled diesel engine

V4

4 x 1000W metal halide lamps, 50 hours runtime before refueling @ 4kW load

V5+

4 x 350W LED lamps, 150 hours runtime before refueling @ 4kW load



HYDRAULIC & AIR HAND TOOLS



BREAKERS

Hydraulic, pneumatic, gas



CORE DRILL

Drill into concrete or asphalt up to 8" diameter



CONCRETE SAW

Concrete, asphalt & steel up to 6" depth



HAMMERS

Hydraulic, pneumatic



HYDRAULIC POWER PACKS

Portable, compact, lightweight



POST & GROUND ROD

DRIVERS high speed driving for a variety of post sizes



POST HOLE BORER

Drill holes in hard soil & sand up to 4.25'



POST PULLER

Remove any pole, steel beam, or tube up to 8" in diameter



ROCK DRILLS

Hydraulic, pneumatic, gas



SUBMERSIBLE PUMPS

Hydraulic, pneumatic

Graphics may show optional accessories not included. **Not all products represented in this equipment guide may be available at all locations.**



buckeyepowersales.com

TOWABLE GENERATORS

KOHLER
IN POWER. SINCE 1920.



TOWABLE GENERATOR FEATURES INCLUDE:

- Steel, sound-attenuating housing
- Environmental containment tank
- EPA emissions certified, Diesel Tier 4 Final engine
- Electronic isochronous governor +/- 0.5%
- Single point lifting eye
- Multi-voltage selector switch
 - 120/240 volt, 1 phase
 - 120/208 volt, 3 phase
 - 277/480 volt, 3 phase
- Decision Maker 3500 controller
- Secondary containment tank for fuel (diesel)
- Meets Tier 4 Final without a diesel particulate filter (DPF) or diesel exhaust fluid (DEF) (Model 35/45/55REOZT4 only)
- Subbase fuel tank for 24-hour run time w/full load at prime rating (min.-diesel models)
- Trailer mounted LP fuel tanks 24 hour run time (min. LP models)
- Battery disconnect
- Two-way fuel valve easily switches from on-board to external fuel source
- Heavy-duty air cleaner w/ restriction

DIESEL FUELED

35REOZT4

Kohler KDI 1.9L turbo-charged diesel engine, standby rating 30kW, sound level 66 dB(A)

45REOZT4

Kohler KDI 2.5L turbo-charged diesel engine, standby rating 40kW, sound level 67 dB(A)

55REOZT4

Kohler KDI 3.4L turbo-charged diesel engine, standby rating 48kW, sound level 69 dB(A)

90REOZT4

John Deere 4.5L turbo-charged diesel engine, standby rating 85kW, sound level 71 dB(A)

120REOZT4

John Deere 4.5L turbo-charged diesel engine, standby rating 105kW, sound level 71 dB(A)

145REOZT4

John Deere 6.8L turbo-charged diesel engine, standby rating 130kW, sound level 70 dB(A)

175REOZT4

John Deere 6.8L turbo-charged diesel engine, standby rating 154 kW, sound level 71 dB(A)

KOHLER CONVENIENCE PACKAGE INCLUDES:

- Battery charger
- Camlock style load connectors, color coded
- Cold weather package (block heater, battery heater pad & wrap)

NATURAL GAS & LP FUELED

30REZGT

General Motors 3.0L engine, standby rating 28kW (propane or natural gas), sound level 66 dB(A)

50REZGT

General Motors 3.0L engine, standby rating 42kW (propane); 38kW (natural gas), sound level 69 dB(A)

70REZGT

General Motors Vortec 5.7L V-8 engine, standby rating 62kW (propane); 57kW (natural gas), sound level 67 dB(A)

125REZGT

PSI Industrial 8.8L V-8 engine, standby rating 105kW (propane); 95kW (natural gas), sound level 69 dB(A)

- Duplex receptacles, two 120V, 15 amp
- Twistlock receptacles, three 240V, 50 amp
- Two-way fuel valve (for connection of a user-supplied external fuel tank)

Atlas Copco



FEATURES INCLUDE:

- Heavy duty, weatherproof, sound attenuated enclosure
- Available in skid mount or trailer mounted configuration
- Latest technology controller

QAS251D

31.5HP Isuzu 4LE2T turbo-charged diesel engine, standby rating 20kW, Sound level 67 dB(A)

MOBILE PARALLELING



Mobile paralleling box lets you parallel differently sized KOHLER mobile generators to meet job needs. Each box can parallel two generators with Decision Maker 3500 controller.

APPLICATIONS

- Use smaller generators to replace a larger generator
- Provide redundancy to primary generator in support of critical loads

POWER RENTAL FLEET

DIESEL GENERATORS W/SOUND ATTENUATED ENCLOSURES

- Tow-behind generators 20kW - 400kW
- Trailer mounted generators 300kW - 2000kW
- Up to multi-megawatt parallel capabilities

POWER DISTRIBUTION & ACCESSORIES

- Distribution boxes in multiple receptacle configurations
- Auxiliary fuel tanks
- Resistive load banks 15kW - 2.5MW
- I-Line panels
- Transformers & disconnects



FOR ALL OF YOUR RENTAL NEEDS

855-550-RENT

Graphics may show optional accessories not included. **Not all products represented in this equipment guide may be available at all locations.**

UTILITY VEHICLES



YANMAR BULL

Features include

- Electric power steering (EPS)
- Electric start
- YANMAR Fuel Injection (YFI)
- Tru-Torq® CVT drive system
- Downhill engine braking
- Dial-Lok® means easy drive selection
- Fully-independent long travel suspension
- Anti-sway bar reduces body roll
- 4-wheel, twin piston, large diameter hydraulic disc brakes
- Dual-range (hi/lo) drive and reverse
- 11.8" ground clearance
- 9.7 gal. fuel capacity
- 600 lbs. bed capacity
- 1500 lbs. towing capacity

YU700G

686cc liquid-cooled SOHC 4-stroke, 4 valve engine, 3 seats



YANMAR LONGHORN

Features include

- Electric power steering (EPS)
- Electric start
- YANMAR Fuel Injection (YFI)
- Tru-Torq® CVT drive system
- Downhill engine braking
- Dial-Lok® means easy drive selection
- Fully-independent long travel suspension
- Anti-sway bar reduces body roll
- 4-wheel, twin piston, large diameter hydraulic disc brakes
- Dual-range (hi/lo) drive and reverse
- 11.8" ground clearance
- 9.7 gal. fuel capacity
- 600 lbs. bed capacity
- 1500 lbs. towing capacity

YU700GMP

686cc liquid-cooled SOHC 4-stroke, 4 valve engine, 6 seats



YANMAR BRAHMA

Features include

- Electric power steering (EPS)
- 2WD, 4WD, rear locking/unlocking differential drive train
- Adjustable HPG shock absorbers/ double wishbone (a-arm) design suspension
- Continuously variable transmission (CVT) with L/H/N/R
- Roof standard on all models
- Turn signal standard on all models
- Hazard light standard on all models
- Horn standard on all models
- 12.2" ground clearance
- 10.6 gal. fuel capacity
- 1000 lbs. bed capacity
- 2000 lbs. towing capacity

YU1000D

993cc 3 cylinder, 4-cycle, liquid-cooled inline diesel engine, 2 fully adjustable seats



COLORS AVAILABLE FOR UTILITY VEHICLES



Matte dark gray w/ black hood



Green w/ silver graphics



Realtree AP® camo



Red w/silver graphics

ABOVE IMAGES MAY SHOW OPTIONAL ACCESSORIES

OPTIONAL ACCESSORIES FOR UTILITY VEHICLES



40" LED light bar



Folding windshield



Clearview cab



Soft side cover



Rear window



Storage cover



Snow plow kit



Mud flaps



Fox® 2.0 Podium® shocks



Headlight & taillight guards



Multi-mount winch mount



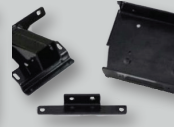
Front speaker pods



Provantage 3500 Winch by Warn®



Heavy-duty brush guard



Front receiver hitch



Cargo bed box

GAS POST DRIVERS

RHINO RANCH PRO GPD-30

Features include

- Honda 4-cycle engine
- 1-3/4" Master Chuck
- Weighs 33 lbs.
- Application: T-post, ground rod, form pin, 1" to 1-5/8" posts



RHINO FENCE PRO GPD-40

Features include

- Honda 4-cycle engine
- 2-1/2" Master Chuck
- Weighs 38 lbs.
- Application: T-post, ground rod, form pin, 1" to 1-5/8" posts, 1-3/4" to 2-3/8" posts, tent stakes



RHINO MULTI-PRO GPD-45

Features include

- Honda 4-cycle engine
- 2-1/2" Master Chuck
- Weighs 44 lbs.
- Application: T-post, ground rod, form pin, 1" to 1-5/8" posts, 1-3/4" to 2-3/8" posts, tent stakes, 1-1/2" to 2-1/2" square posts, 1.2 lbs. to 4 lbs. channel



RHINO MULTI-PRO XA GPD-45XA

Features include

- Same as GPD-45 w/ extended anvil
- Easily changeable chuck
- Application: T-post, ground rod, form pin, 1" to 1-5/8" posts, 1-3/4" to 2-3/8" posts, tent stakes, 1-1/2" to 2-1/2" square posts, 1.2 lbs. - 4 lbs. channel



Graphics may show optional accessories not included. **Not all products represented in this equipment guide may be available at all locations.**



buckeyepowersales.com

WATER & TRASH PUMPS



HONDA **LIGHTWEIGHT** **WX10**

25cc Honda engine,
32 gal/min capacity,
1" suction & discharge

WX15
49cc Honda engine,
74 gal/min capacity,
1.5" suction & discharge



HONDA **CENTRIFUGAL** **WB20**

118cc Honda OHV engine,
164 gal/min capacity,
2" suction & discharge

WB30
163cc Honda OHV engine,
290 gal/min capacity,
3" suction & discharge



HONDA **HIGH PRESSURE** **WH15**

118cc Honda OHV engine,
98 gal/min capacity,
1.5" centrifugal pump

WH20
163cc Honda OHV engine,
119 gal/min capacity,
2" centrifugal pump



HONDA **MULTI-PURPOSE** **WMP20**

163cc Honda OHV engine,
220 gal/min capacity,
2" suction & discharge



HONDA TRASH **WT20**

163cc Honda OHV engine,
187 gal/min capacity,
2" suction & discharge

WT30
242cc Honda OHV engine,
319 gal/min capacity,
3" suction & discharge

WT40
337cc Honda OHV engine,
433 gal/min capacity,
4" suction & discharge



HONDA **SUBMERSIBLE** **WSP33**

1/3HP 115V motor, 40 gal/
min capacity, lightweight,
stainless steel casing

WSP50
1/2HP 115V motor, 110 gal/
min capacity, handles solids
up to 2", side discharge

WSP53
1/2HP 115V motor, 70 gal/
min capacity, top discharge

WSP73
3/4HP 115V motor, 74 gal/
min capacity, top discharge

WSP100
1HP 115V motor, 150 gal/
min capacity, handles solids



ATLAS COPCO DE-WATERING

WEDA 10
2HP motor, 119 gal/min
capacity (single phase),
117 gal/min capacity,
handles solids up to 0.16"

WEDA 30
4HP motor, 220 gal/min
capacity (normal head),
handles solids up to 0.27"

WEDA 40
5HP motor, 370 gal/min
capacity (normal head),
handles solids up to 0.27"

WEDA 50+
8.5HP motor, 638 gal/min
capacity (normal head),
handles solids up to 0.32"

WEDA 60+
11.5HP motor, 746 gal/min
capacity (normal head),
handles solids up to 0.32"

WEDA 70
15HP motor, 1200 gal/min
capacity (low head),
handles solids up to 0.27"

WEDA 90
36HP motor, 1790 gal/min
capacity (low head),
handles solids up to 0.27"

WEDA 100
84HP motor, 6100 gal/min
capacity (normal head),
handles solids up to 0.47"



ATLAS COPCO **CENTRIFUGAL**

PAS 4 DDM-W260
45.6HP Kohler KDI
turbo-charged diesel
engine, 1430 gal/min
capacity, 4" suction &
discharge, handles solids
up to 3"

PAS 6 DDM-W250
45.6HP Kohler KDI
turbo-charged diesel
engine, 3655 gal/min
capacity, 6" suction &
discharge, handles solids



HONDA **DIAPHRAGM** **WDP30**

118cc Honda OHV engine,
80 gal/min capacity,
3" diaphragm pump

OPTIONAL HOSE KITS



20' green suction, 50' blue
discharge, 3/8" steel strainer
• 1.5" dia. 124015-1145-CLKT
• 2" dia. 124020-1145-CLKT
• 3" dia. 124030-1145-CLKT
• 4" dia. 124040-1145-CLKT

20' green suction, 50' blue
discharge, 3/8" steel strainer
• 1.5" dia. 124015-1145-PINKT
• 2" dia. 124020-1145-PINKT
• 3" dia. 124030-1145-PINKT
• 4" dia. 124040-1145-PINKT

PORTABLE GENERATORS



HONDA QUIET **EU1000**

50cc Honda GXH50
engine, 1000W max. output

EU2200
121cc Honda GXR120
engine, 2200W max. output

EU2200 Companion
121cc Honda GXR120
engine, 2200W max. output,
30A 125V locking plug &
20A 125V single outlet



HONDA QUIET **EU3000**

196cc Honda GX200
engine, 3000W max. output

EU3000 Handi
163cc Honda GX160
engine, 3000W max. output

EU7000
389cc Honda GX390 EFI
engine, 7000W max. output



HONDA ECONOMY **EG2800**

186cc Honda GC190LA
engine, 2800W max. output,

EG4000
270cc commercial OHV
engine, 4000W max. output

EG5000
389cc commercial OHV
engine, 5000W max. output

EG6500
389cc commercial OHV
engine 6500W max. output



HONDA DELUXE **EM4000**

270cc Honda iGX270
engine 4000W max. output

EM5000
389cc Honda iGX390
engine 5000W max. output

EM6500
389cc Honda iGX390
engine 6500W max. output



HONDA **INDUSTRIAL** **EB2200**

121cc Honda GXR120
engine, 2200W max. output

EB2800
186cc Honda GC190LA
engine, 2800W max. output,
Advanced Inverter Technology

EB3000
196cc Honda GX200 engine,
3000W max. AC output



HONDA **INDUSTRIAL**

EB4000
270cc Honda iGX390 en-
gine, 4000W max. AC output

EB5000
389cc Honda iGX390
engine, 5000W max. output

EB6500
389cc Honda iGX390
engine, 6500W max. output

EB10000
630cc Honda GX630
engine, 10000W max. output

Graphics may show optional accessories not included. **Not all products represented in this equipment guide may be available at all locations.**

BUCKEYE POWER SALES

We know you have choices when it comes to where you purchase your equipment, here's why we're the best value on the market.

NO CUSTOMER IS TOO BIG OR TOO SMALL.

Whether it's one piece or multiple pieces you receive the same premium customer service before, during and after the sale.

EXPERIENCE.

We've been in the equipment business since 1947. Our sales staff has the knowledge, skills, and training to help you choose the right equipment. We are focused on developing long term relationships with our customers.

SERVICE.

We are a full service dealer with qualified factory-trained service technicians.

WE PROVIDE SOLUTIONS.

Our long list of repeat customers are a testimony to our success & reputation for unmatched experience, service, resources & reliability.

SHOP ONLINE
buckeyepowersales.com



- REQUEST A QUOTE
- REQUEST SERVICE
- REQUEST RENTAL EQUIPMENT

**POWER
GENERATORS**

**CONSTRUCTION
EQUIPMENT**

**LAWN & OUTDOOR
EQUIPMENT**

COLUMBUS, OH

6850 Commerce Court Drive Blacklick, OH 43004
614-861-6000 | 800-523-3587

COLUMBUS, OH

8155 Howe Industrial Parkway | Canal Winchester, OH 43110
614-751-4515 | 866-889-2628

DAYTON, OH

5238 Cobblegate Drive | Moraine, OH 45439
937-203-0231 | 855-637-9849

CINCINNATI, OH

4992 Rialto Road | West Chester, OH 45069
513-755-2323 | 800-368-7422

CLEVELAND, OH

8465 Tower Drive | Twinsburg, OH 44087
330-425-9165 | 800-966-2825



CALL US FOR ALL OF YOUR RENTAL NEEDS

855-550-RENT



All graphics are for illustration purposes only and are representations of the products. All makes & models may differ. BPS is not responsible for inadvertent typographical errors or omissions. Not all products represented may be available at all locations.

SALES | SERVICE | PARTS | RENTAL

buckeyepowersales.com