

# VersaPad® PS/2 Data Sheet

## PS/2 Touchpad for Mousing Applications

### Features and Benefits

- Requires no additional driver
- Tap for left-click
- Double tap
- Tap and drag
- Drag edge lock
- Border scroll
- Actuator can be a stylus, a finger, or a gloved hand
- Horizontal scroll (with driver)

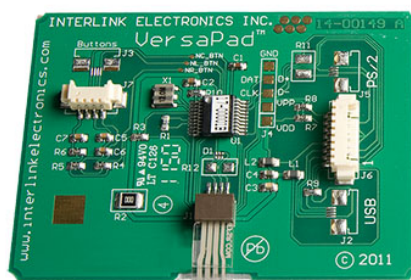
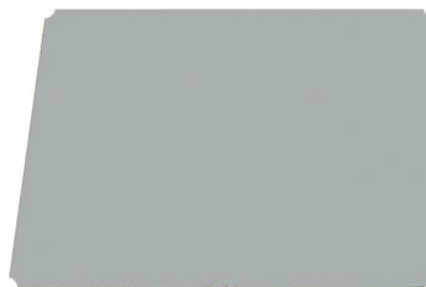
### Description

The Interlink Versapad® touchpad is Interlink's mousing solution for OEM and rugged applications. The module's tough moisture resistant surface can be used with a finger, stylus, or glove; even in harsh environments.

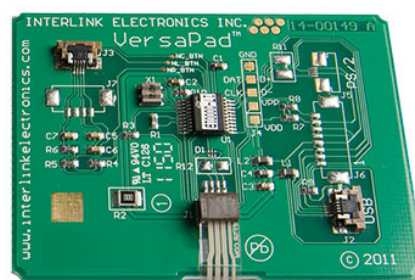
The VersaPad PS/2 will attach as a 2 button mouse, or a 3 button scroll mouse using the native Operating System's mouse driver. A Hardware Development Kit is available. Call us to order at 805-484-8855

### Some Applications

- Industrial Computers
- Rugged/Military Notebook Computers
- Desktop Keyboards
- Handheld PCs
- Digital Media Players



Header Version  
(board to wire)



FFC Version

# VersaPad® PS/2 Data Sheet

## PS/2 Touchpad for Mousing Applications

### Device Characteristics

Overlay Color	Dark Gray, Pantone 425C
Actuation Force	.05N-.3N (5g – 30g)
Weight	15 grams or less
Operating Temperature Performance	Functional before, during, and after exposure to the below conditions:
Cold Dry	-20°C <=5%RH for 96 hours
Cold Humid	10°C 95%RH for 96 hours
Hot Dry	50°C <5%RH for 96 hours
Hot Humid	60°C 95% for 96 hours
Storage Temperature Performance	Functional after 96 hours of exposure to the below conditions:
Cold Dry	-40°C <=5%RH
Hot Dry	70°C <=5%RH
Hot Humid	70°C 95%RH
Thermal Shock	Functional after 20 cycles of -40°C to 70°C with a 30 minute dwell time and 5 minute transitions
Lifetime Durability	>5 million stylus strokes at -150g+/-10g At +23°C and +°70
Standing Load Durability	Vertical static load 1kgf max for 1 hour
Tap Durability	>1,000,000 cycles at 1kgf/silicone finger/4Hz At +23°C and +°70
Drop	Dropped from 122cm (48 in.) onto concrete
Mechanical Shock	Comparable to MIL-STD-202, 80G accelerated in 11 msec
Mechanical Vibration	Comparable to MIL-STD-202, Method 204, Condition A
Altitude – Operating 10,000 ft	Functional before, during, and after exposure to altitude pressure simulation in vacuum (1 hour)
Altitude – Storage 30,000 ft	Functional before, and after exposure to altitude pressure simulation in vacuum (1 hour)
UL	All materials UL grade 94 V-1 or better
RoHS	Compliant
Stylus recommendations:	
Material	Acetal or Teflon
Minimum radius of tip	1.5mm
EMI	See notes from PS
ESD	See notes from PS

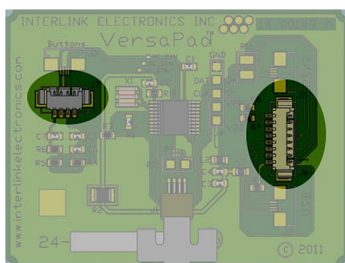
# VersaPad® PS/2 Data Sheet

PS/2 Touchpad for Mousing Applications

## Connector Options

### Header

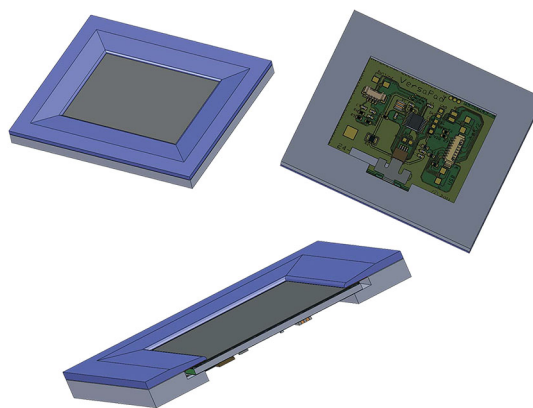
One connector option for the VersaPad is to use wire to board header connectors. The J7 header (Molex #53261-0471) is used for connecting external mouse buttons, the J6 (Molex #53261-0871) is the PS/2 communication header.



## Application Information

### VersaPad Module Bezel Mounting Concept

A general bezel mounting method is one possible way to mount the VersaPad Module



### Header Wire and Cable Options

- 12" Wire Cable Harness, PN 14-16576
- PS/2 Cable Assembly, PN 14-00053
- PS/2 Cable Assembly with Strain Relief, PN 14-00225

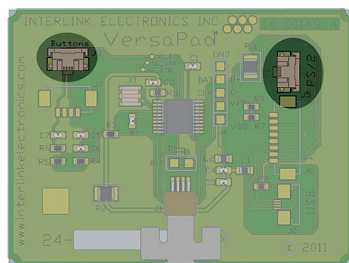
### FFC

The VersaPad is also available in a Flat Flex Cable (FFC) connector option. The FFC is used in two places: the J3 for buttons, and the J5 for the PS/2 communication.

Manufacturer: FCI

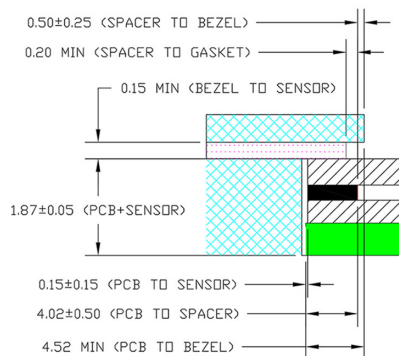
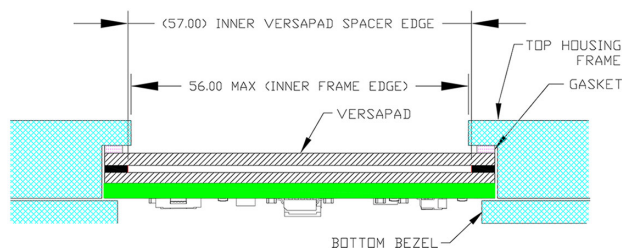
Part Number: SFV4R-1STE1LF

Refer to the manufacturer's datasheet for more information.



## Bezel Concept Critical Dimensions

Indicated are the critical dimensions associated with the VersaPad Module



# VersaPad® PS/2 Data Sheet

PS/2 Touchpad for Mousing Applications

## Orderable Part Numbers

### Hardware Development Kit, 54-00047

This Hardware Development Kit includes:

- PS/2 VersaPad, FFC Connectors (Qty. 1)
- PS/2 VersaPad, Molex Connectors (Qty. 1)
- PS/2 VersaPad, Demo Model (Qty. 1)
- Demo Model Graphic Overlay (Qty. 1)
- 12" Wire Cable Harness (Qty. 1)
- FFC Cables (Qty. 2)
- FFC Connectors (Qty. 3)
- USB Flash drive with product literature (Qty. 1)

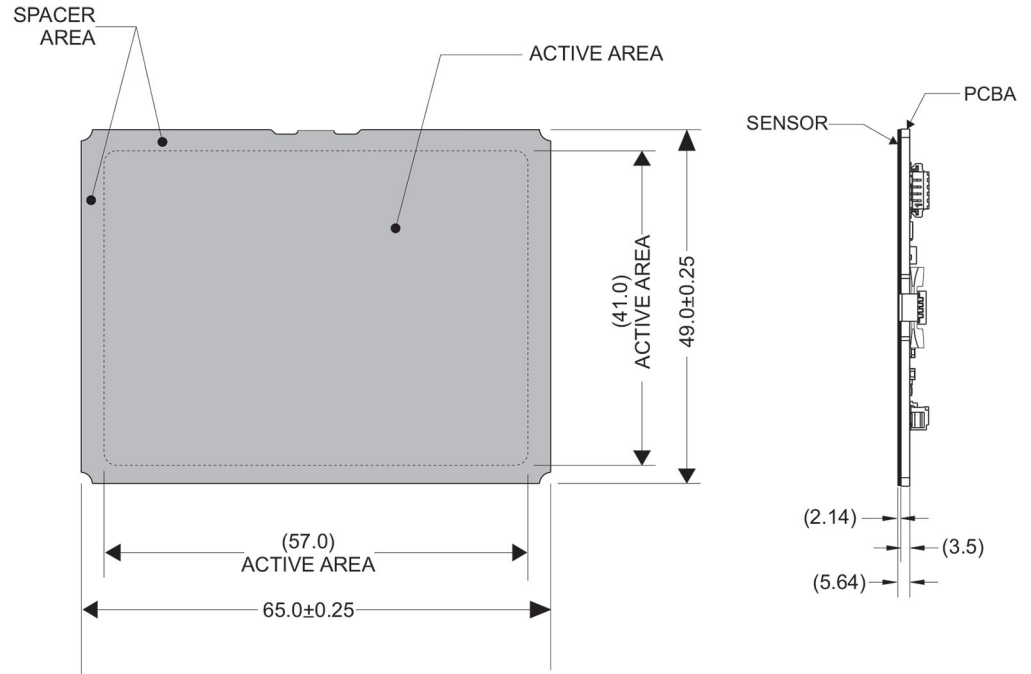
**PS/2 VersaPad FFC**, PN 54-00090

**PS/2 VersaPad Molex**, PN 54-00087

**PS/2 Cable Assembly**, PN 14-00053

**PS/2 Cable Assembly with Strain Relief**, PN 14-00225

**12" Wire Cable Harness**, PN 14-16576



## Contact Us

### United States Corporate Office

Interlink Electronics, Inc.  
1267 Flynn Rd.  
Camarillo, CA 93012, USA  
Phone: +1.805.484.8855  
Fax: +1.805.484.9457  
InterlinkElectronics.com  
Sales & Support: sales@iefsr.com