



Surveying & mapping

Offices



160+ global employees
23 nationalities
26 business languages spoken



SAN FRANCISCO
U.S.A.



LAUSANNE
SWITZERLAND



BERLIN
GERMANY



SHANGHAI
CHINA

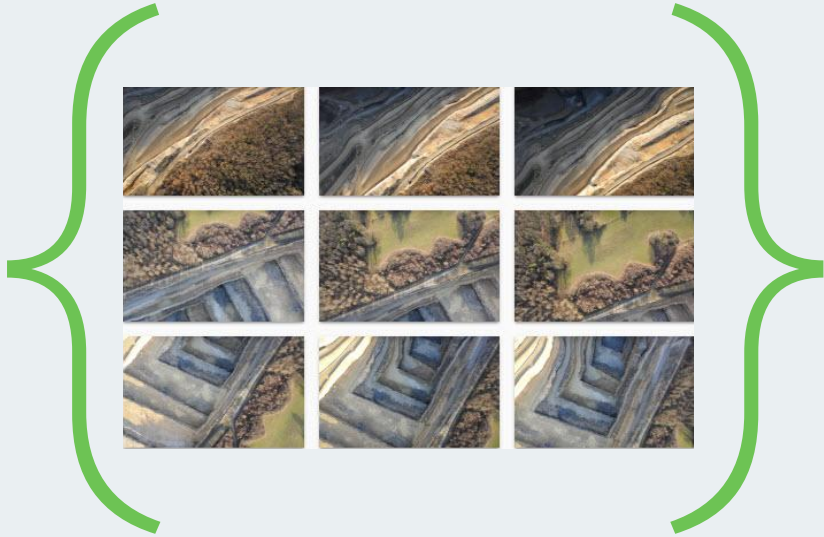


MADRID
SPAIN

An aerial view of a city, likely New York City, rendered in a monochromatic green color. The image features a dense urban landscape with numerous skyscrapers and buildings. A semi-transparent 3D point cloud or mesh overlay is visible, particularly on the taller buildings, suggesting a focus on computer vision or 3D reconstruction. The text "What do we do at Pix4D?" is centered over the image in a white, bold, sans-serif font.

What do we do at Pix4D ?

What do we do at Pix4D ?



Information from images
for better and faster decisions

What is photogrammetry ?



Photogrammetry generates 2D maps and 3D models, purely from images

Our software



Pix4D software for surveying & mapping



Pix4D**capture**

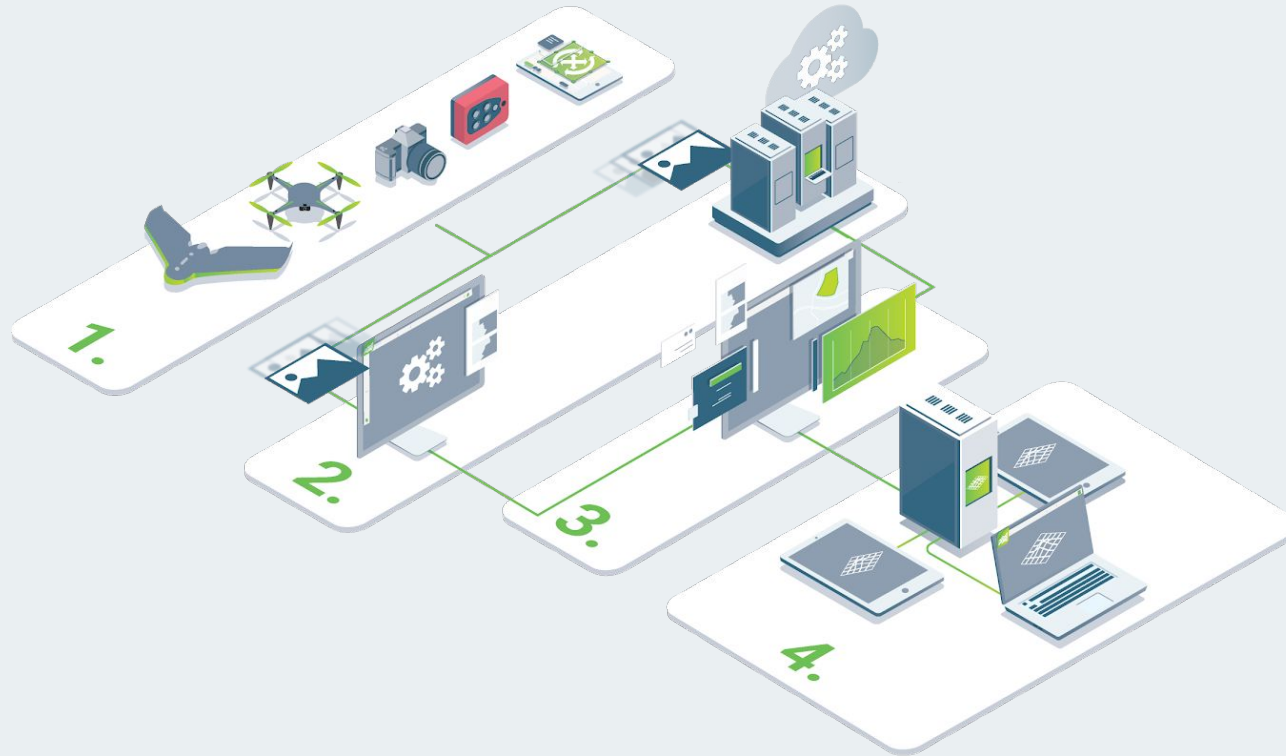
Free mobile flight planning app



Pix4D**mapper**

Desktop & Cloud software

Pix4D workflow



1. Capture
2. Digitize
3. Check, Measure & Inspect
4. Share

Inputs



RGB images



Drone images



Multispectral images



Thermal images



Fisheye images



360° camera images



Camera rig images

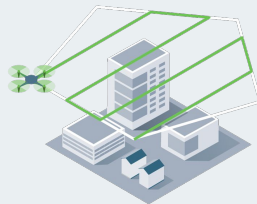


Videos

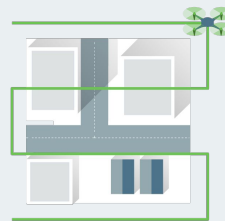
Pix4Dcapture

- Plan and control drone flights for professional mapping and data capture
- iOS & Android
- DJI, Parrot, and Yuneec drones

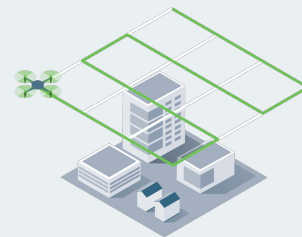
Flight missions



Polygon



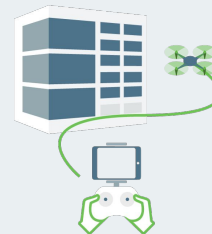
Grid



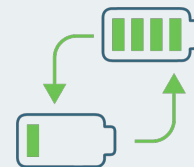
Double grid



Circular



Free flight



Multi-battery

Digitize



Transform your images into accurate digital outputs.

Process your projects locally on Pix4Dmapper Desktop or online on Pix4Dmapper Cloud.

Outputs



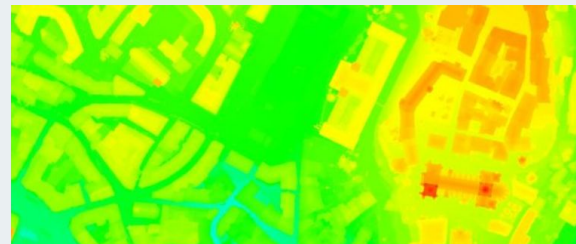
Full-color point cloud

.las, .laz, .ply, .xyz



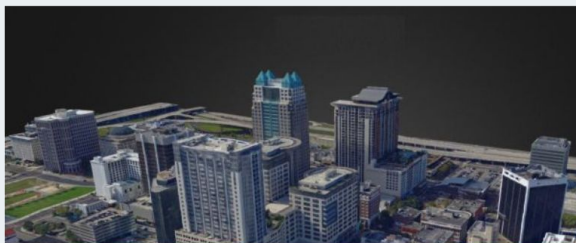
Orthomosaic

GeoTiff (.tif), .kml



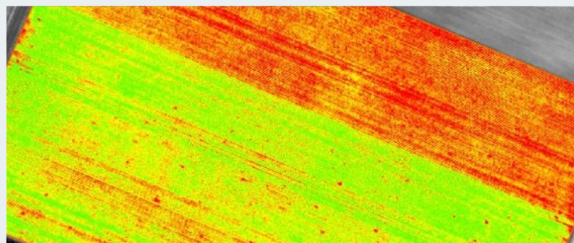
Digital surface model (DSM)

GeoTiff (.tif), .xyz, .las, .laz



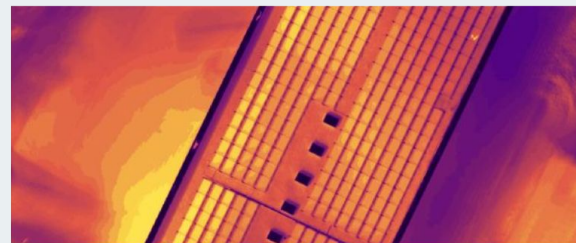
3D textured mesh

.ply, .fbx, .dxf, .obj, .pdf



Index map

GeoTiff (.tif), .shp



Thermal maps

GeoTiff (.tif)

And more...

Check



Assess and improve the accuracy of your project with the quality report and the rayCloud™.

Measure & Inspect



- Measure distances, areas, and volumes
- Extract elevation profile data
- Perform virtual inspections

Collaborate & share



- Export individual files
- Work with third-party software
- On the Cloud, selectively and securely share data only with an URL

Why mapping with Pix4D?



Increased productivity

Reduce field time and overall surveying time

Reduce surveying and operational risks



Accurate results

Assess and improve your data accuracy

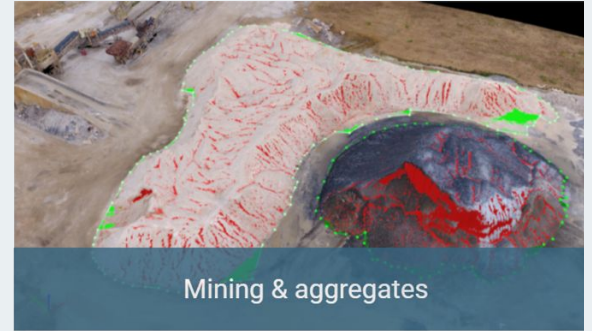
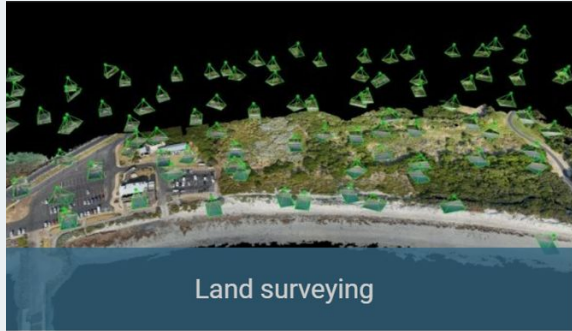


Always updated maps and terrain models

simple workflow

easily repeatable data capture

Applications



Case study



Surveyor [noun]

A person whose job is to measure and record the details of areas of land.*

*<https://dictionary.cambridge.org/dictionary/english/surveyor>

The traditional surveyor



Digital Surveyor [noun]

A person whose job is to measure and record the details of areas of land **with cutting-edge digital technology**.*

*[Pix4D](#)

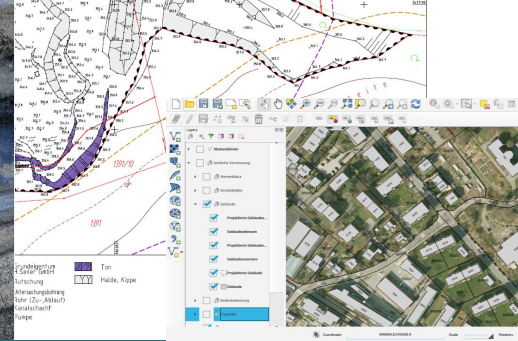
The digital surveyor



Capture (inputs)



Process (outputs)



CAD/GIS



Now I have the terrain in my office.



I am working in CAD/GIS software.



A wide-angle photograph of a quarry or stone processing site. The scene is dominated by large, light-colored rock blocks and a deep, narrow channel. In the background, a drone is visible in the sky, and a small structure or piece of equipment is on the right. The entire image has a green color overlay.

Q&A

An aerial photograph of a large-scale construction or mining site, overlaid with a semi-transparent green filter. The image shows extensive earthworks, including deep excavations and large mounds of earth. Several pieces of heavy machinery, such as excavators and trucks, are visible across the site. The overall scene is one of active industrial or construction work.

Thank you
www.pix4d.com