



## **Installation Guide**


### **Version 9.4**

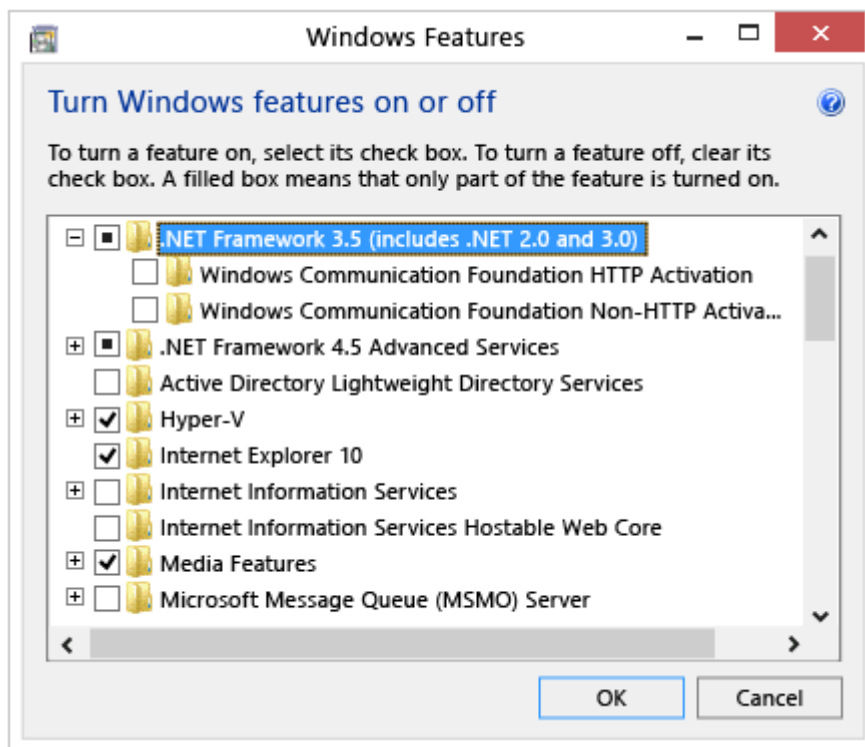
2018

**Note:** By Default, the “.Net FrameWork 3.5” will be disabled in the Windows 10 OS. To install SQL Server 2014, the User has to enable the “.Net. Framework 3.5.

## Enable the .NET Framework 3.5 in Control Panel

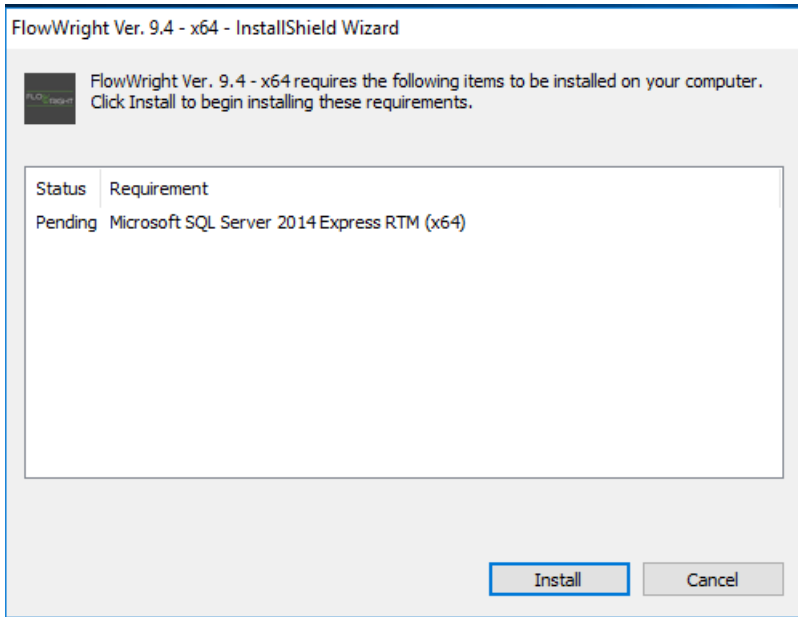
You can enable the .NET Framework 3.5 through the Windows Control Panel. This option requires an Internet connection.

1. Press the Windows key  on your keyboard, type "Windows Features", and press Enter. The Turn Windows features on or off dialog box appears.
2. Select the .NET Framework 3.5 (includes .NET 2.0 and 3.0) check box, select OK, and reboot your computer if prompted.

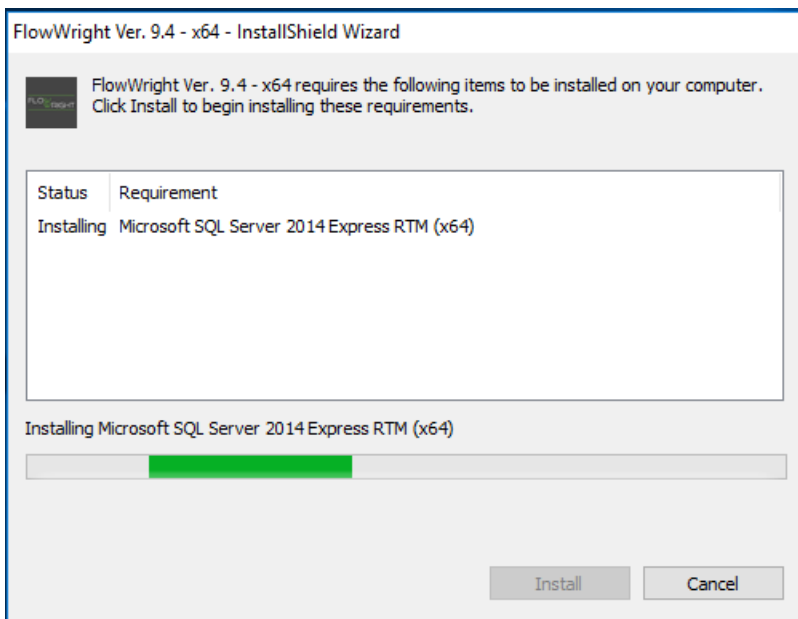


1. Download the FlowWright Package and double click on the “FlowWright9.4-x64” icon. An installation Wizard window is displayed as shown below:

## Installation Guide Version 9.4

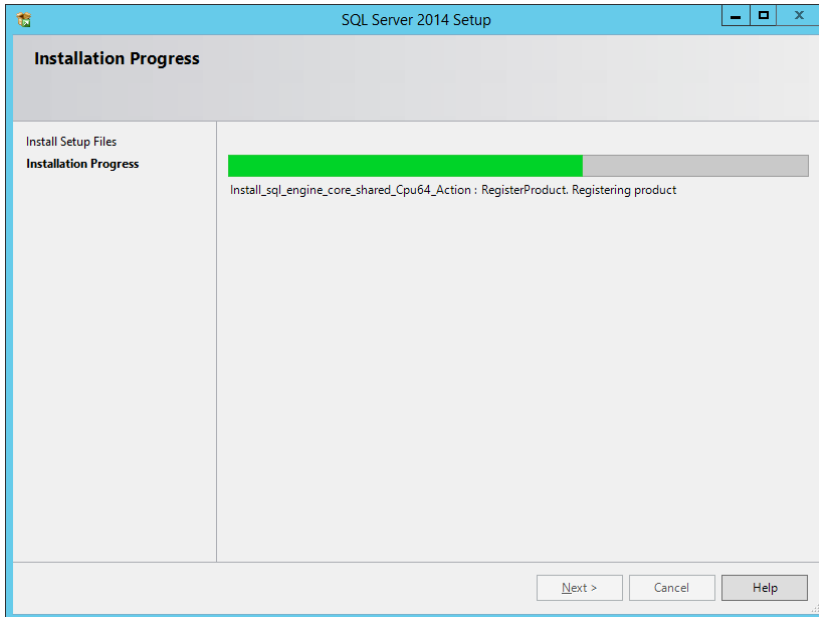


2. Click the “Install” button to start the installing the pre-requisites. Installer will first install an instance of Microsoft SQL Server express, as shown below:

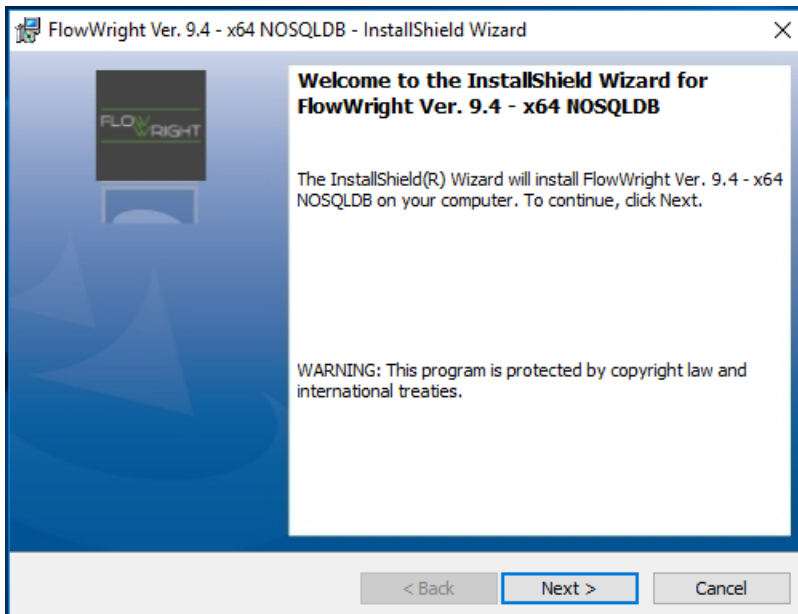


The SQL Server 2014 Setup process will begin as shown below:

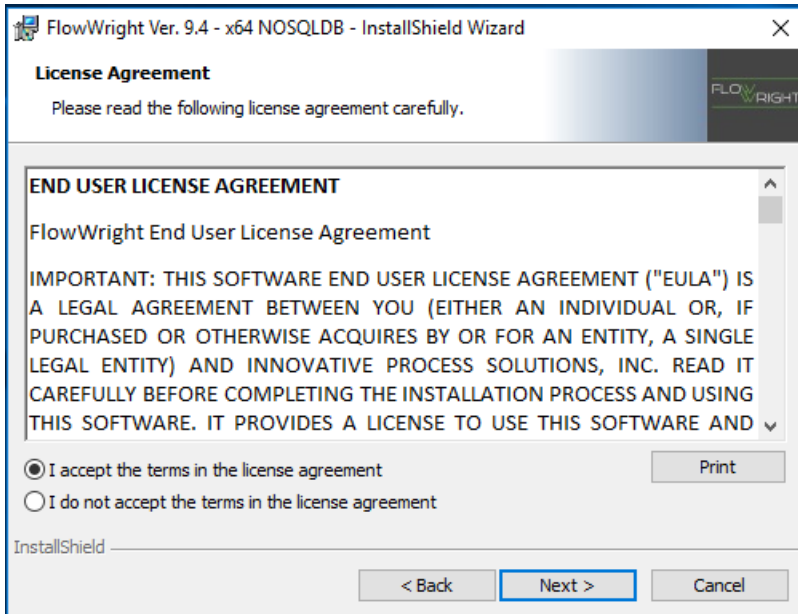
## Installation Guide Version 9.4



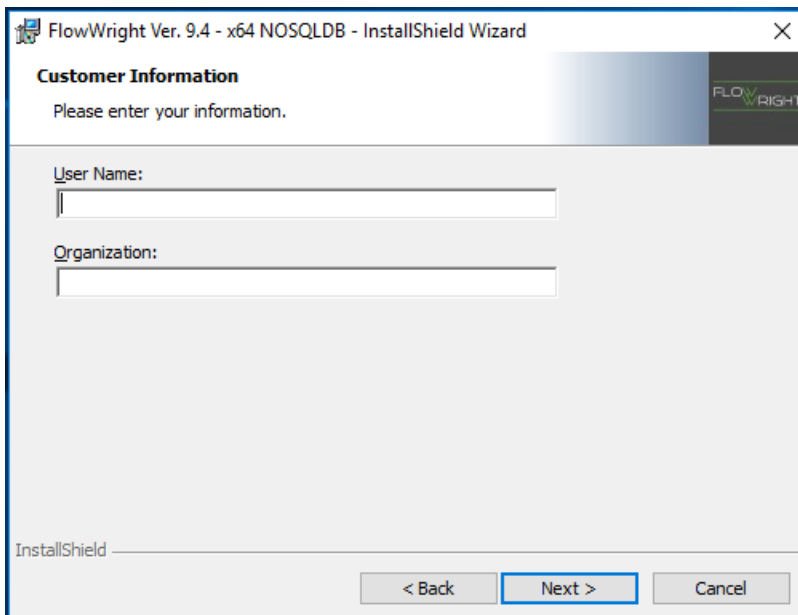
3. On successful completion of the SQL server 2014 Setup, a “FlowWright9.4-x64” Installation user interface will be displayed. Click on the “Next” button to continue the installation.



4. Next, the License Agreement window is displayed, select the “I accept the terms in License agreement” radio button and click on the “Next” button.

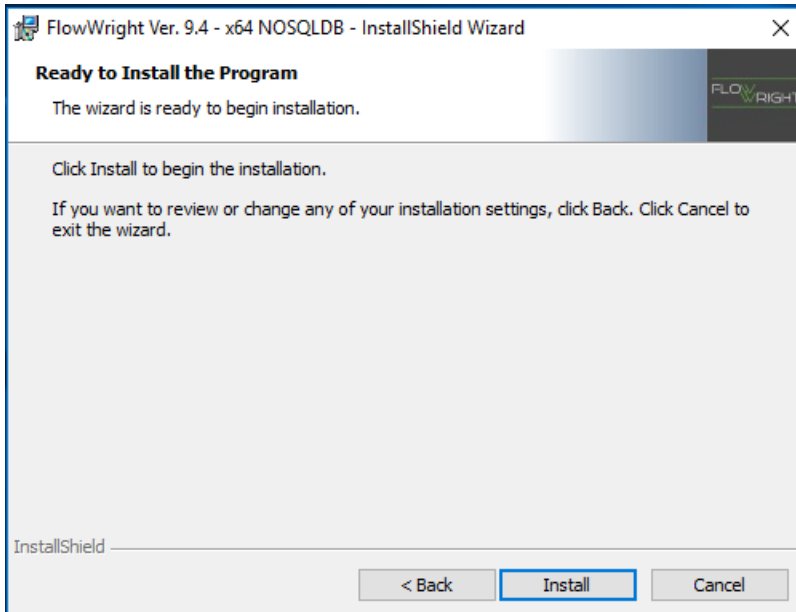


5. Enter the “User Name “and “Organization” name in the “Customer Information” window and click on “Next” button.

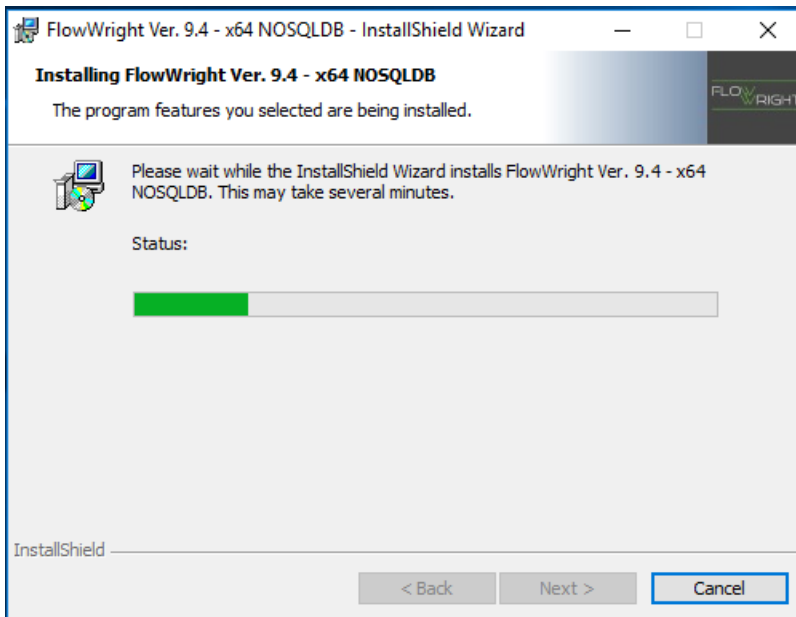


## Installation Guide Version 9.4

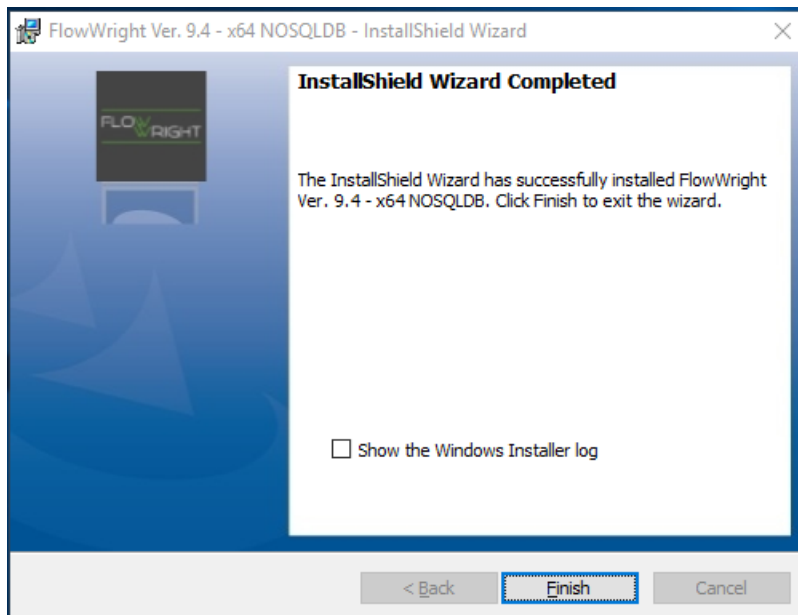
6. The “FlowWright 9.3-x64” Installation wizard shield is displayed, click on the “Install” button to begin the cDewWorkflow installation.



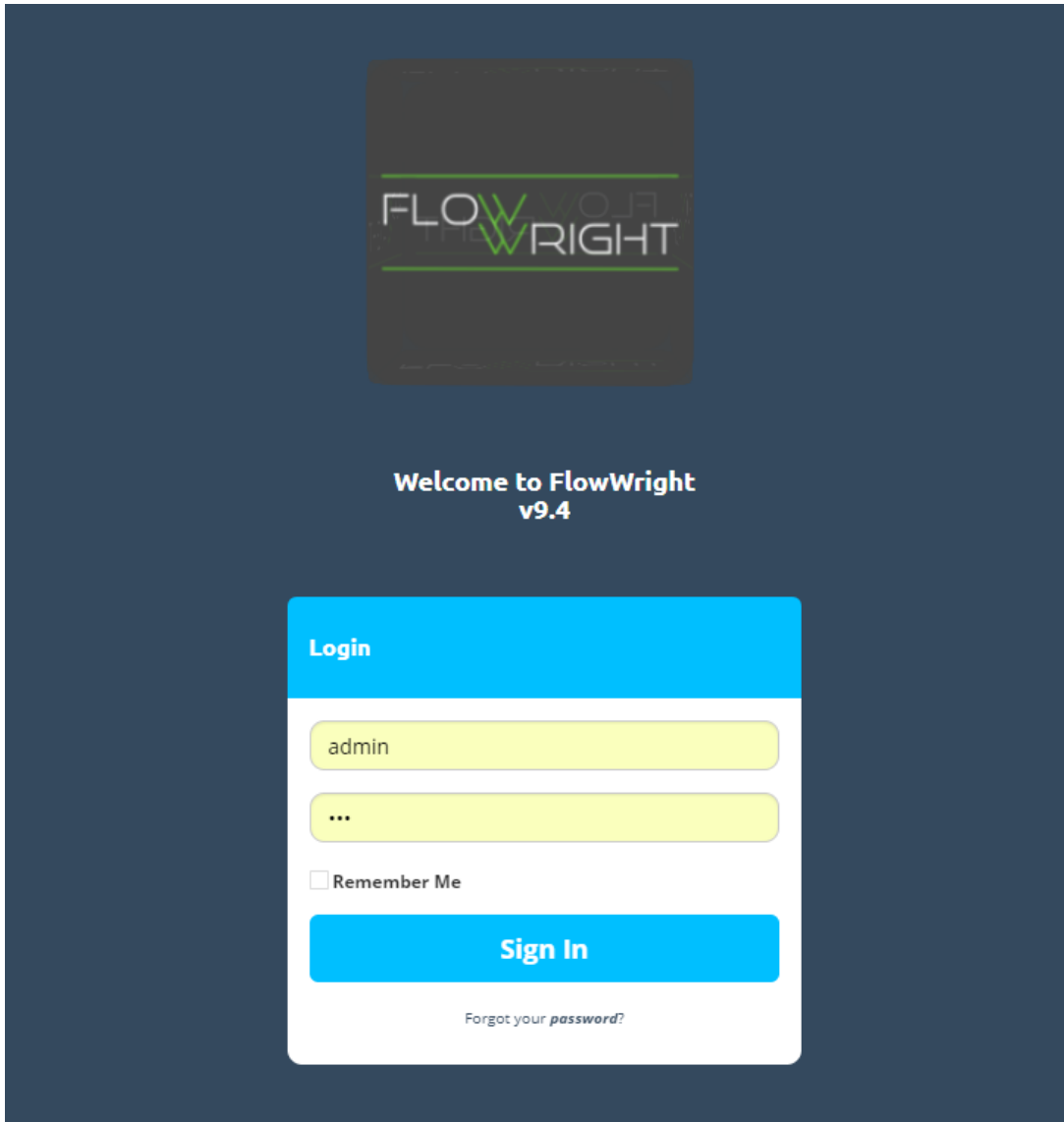
The installation process begins as shown below:



7. The installation is completed successfully and the FlowWright 9.3 application is launched as shown below:



8. Click the "Finish" button to launch the FlowWright Application.



An Icon is also placed on the Start menu and on the Desktop as shown below:

