

# Støysonekart, Steinskogen Pukkverk

Støy fra knusere, boring  
og intern transport









Grenseverdi etter  
forurensningsforskriften: 50 dB


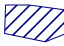




Lden

Beregningshøyde: 2 m

1:6000 (A3)



-  Under 40 dB
-  40 - 45 dB
-  45 - 50 dB
-  50 - 55 dB
-  55 - 60 dB
-  60 - 65 dB
-  65 - 70 dB
-  over 75 dB

-  Høydekote
-  Støykilder
-  Støykilder
-  Bolig
-  Annen bygning
-  Grense, planområde

Produsert av:  
**SWECO** 



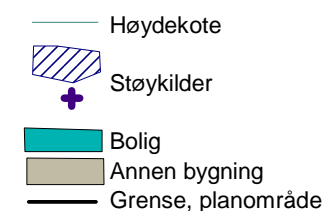
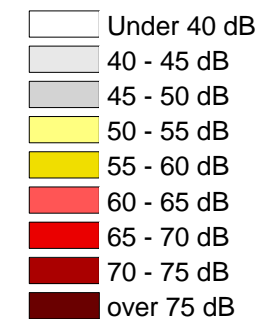
# Støysonekart, Steinskogen Pukkverk

Grenseverdi etter  
utslippstillatelse: 50 dB

Lekv kl. 06-18

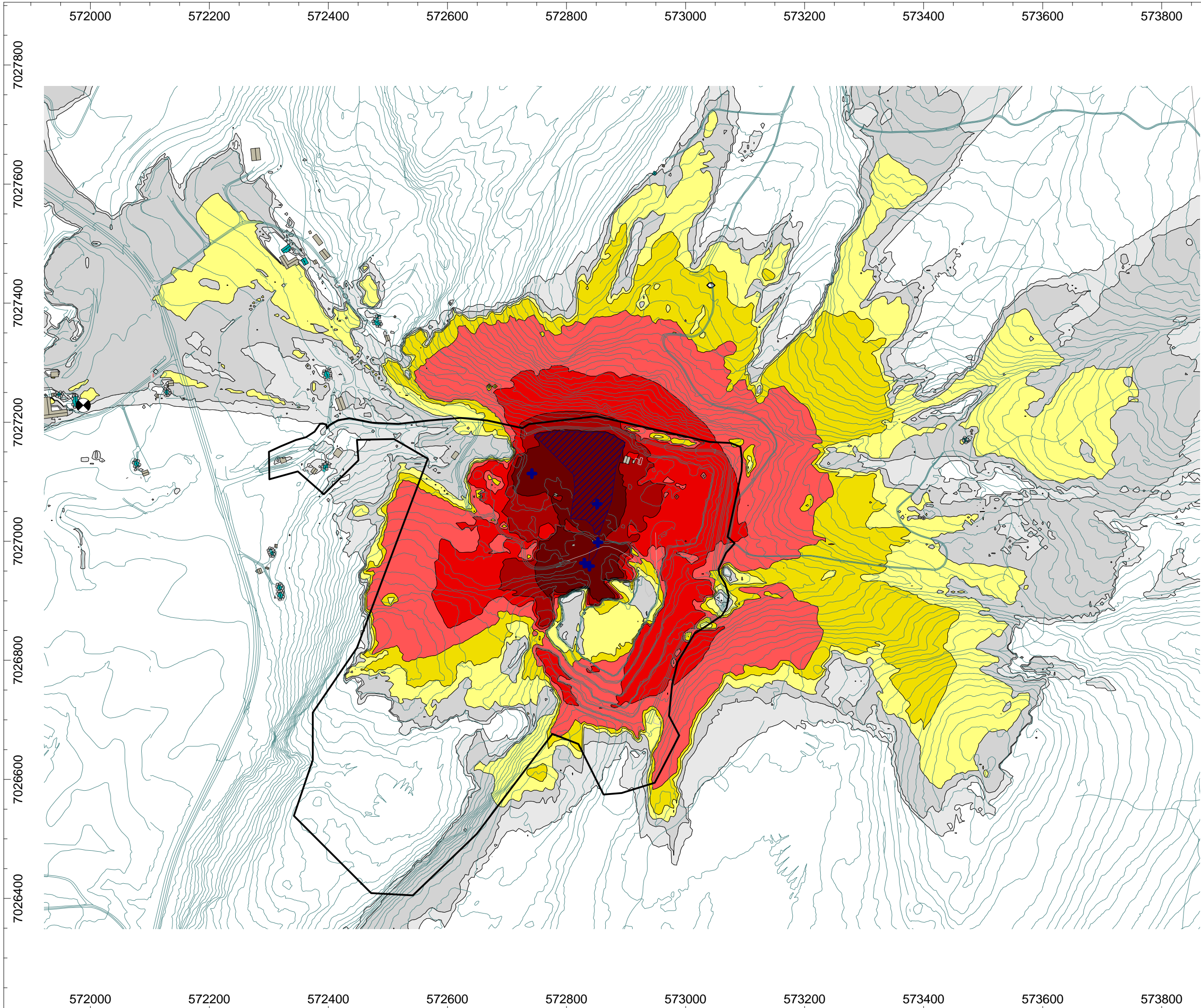
Beregningshøyde: 2 m

1:6000 (A3)



Produsert av:





### Støysonekart, Steinskogen Pukkverk

Støy fra knusere, boring  
og intern transport

Grenseverdi etter  
utslippstillatelse: 45 dB

Lekv kl. 18-20

Beregningshøyde: 2 m

1:6000 (A3)

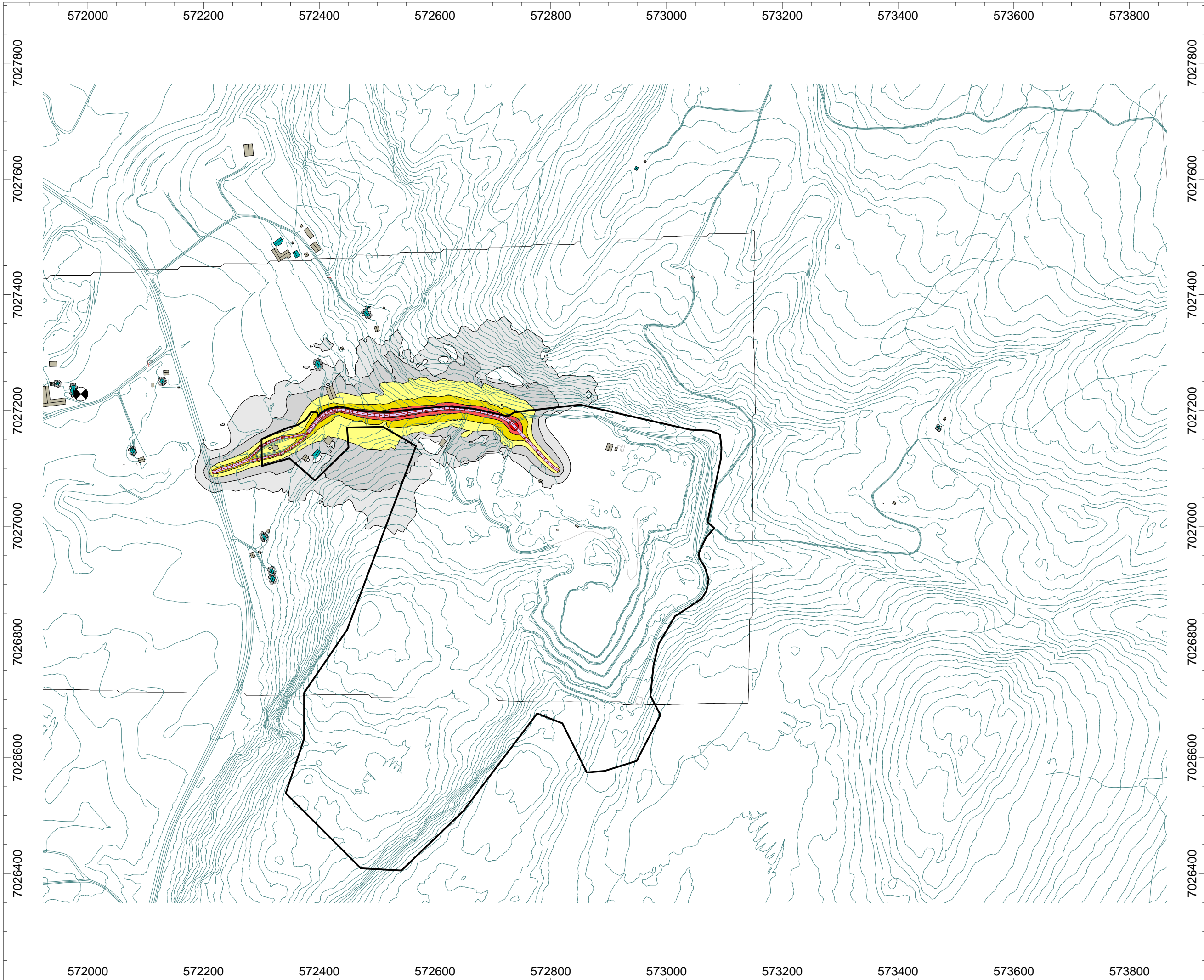


- Under 35 dB
- 35 - 40 dB
- 40 - 45 dB
- 45 - 50 dB
- 50 - 55 dB
- 55 - 60 dB
- 60 - 65 dB
- 65 - 70 dB
- over 70 dB

- Høydekote
- Støykilder
- Støykilder
- Bolig
- Annen bygning
- Grense, planområde

Produsert av:  
**SWECO**





# Støysonekart, Steinskogen Pukkverk

Støy fra adkomstveg

Grenseverdi etter  
forurensningsforskriften: 55 dB

Lden

Beregningshøyde: 2 m

1:6000 (A3)



- Under 45 dB
- 45 - 50 dB
- 50 - 55 dB
- 55 - 60 dB
- 60 - 65 dB
- 65 - 70 dB
- 70 - 75 dB
- 75 - 80 dB
- Over 80 dB

- Høydekote
- Støykilder
- Støykilder
- Bolig
- Annen bygning
- Grense, planområde

Produsert av:  
**SWECO**

