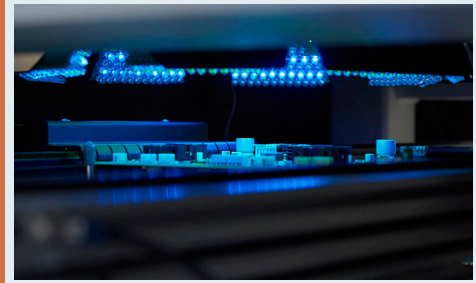


CAPABILITIES STATEMENT



CORE COMPETENCIES

ENGINEERING SERVICES & ELECTRONIC DESIGN

Electronic Design
PCB Layout
Software & Firmware Development
Embedded Control Design
Test Fixture Design
Bluetooth Design
Mechanical Design

PRODUCTION

Printed Circuit Board Assembly
Surface-Mount Technology
High Speed Automation
Plated Through-hole
Lead & Lead Free
Prototype to Production
Three-Day Prototype Turnaround

SUPPLY CHAIN MANAGEMENT

ERP System- To manage resources and facilitate ITAR compliance requirements.

Counterfeit Avoidance- Complaint in SAE AS5553B standard.

Risk Mitigation- Robust software used to identify components at risk & gain an indepth look into electronic component lifecycle statuses, multi-sourcing, available inventory, and environmental compliance data.

FINISHING SERVICES

Functional Testing
Potting, Conformal Coating
Box Build
Packaging Design

DUNS# 040697646
CAGE CODE# 7R4Q2

NAICS	DESCRIPTION
334418	Printed Circuit Assembly
334419	Other Electronic Component Mfg
334513	Instruments and Related Products Mfg for Measuring, Displaying, and Controlling Industrial Process Variables
335122	Commercial, Industrial and Institutional Electric Lighting Fixture Mfg
335129	Other Lighting Equipment Mfg
335999	All Other Miscellaneous Electrical Equipment and Component Mfg
541330	Engineering Services
541512	Computer System Design Service
336320	Motor Vehicle Electrical and Electronic Equipment Mfg
339112	Surgical and Medical Instrument Mfg
811219	Other Equipment and Precision Equipment Repair and Maintenance
811213	Communication Equipment Repair and Maintenance
334510	Electromedical and Electrotherapeutic Apparatus Mfg

COMPANY

SBE (Small Business Enterprise)

Founded in 1996
65 Employees
17,000 Sq. ft. facility

CONTACT INFO

Deanna Dennison

Senior Account Representative
Office 608-837-7838 x224
Mobile 317-412-0623
Deanna.Dennison@proactivepcb.com
www.proactivepcb.com

QUALITY

ISO 9001:2008 Certified
IPC-610F, Class 2 & 3
IPC-J-STD-001
IPC Certified Trainer on staff

CERTIFICATION

ITAR Registered
SAM Registered

INFORMATION

JCP Certified (Form DD2345)
ANSI/ESD S20.20 Prevention Program
DFM Consulting & Review
IPC-7711/IPC-7721 Rework Repair