

Neumann University

Sacred Art and Sacred Spaces – Part II



*A guide to the beautiful art work and peaceful spaces around
Neumann University and Our Lady of Angels Convent*

The Labyrinth

South Drive of Our Lady of Angels Convent

The Labyrinth has been used since ancient times as an aid in prayer and meditation. A Labyrinth is symbolic of our journey through life. There are many twists and turns; sometimes we meet others along the way and sometimes we walk alone. Ultimately, we are all walking to the same end which is God.

Sometimes we may be far away from Him and sometimes we may be very close.

While walking the Labyrinth, one may ask God a question at the beginning and listen for an answer. It is also common to meditate on scripture and listen to what God is saying. Ultimately, the Labyrinth is designed to help clear our minds and quiet our thoughts so we may listen to the voice of God.



[Background on the labyrinth](#)



St. Francis of Assisi

South Drive of Our Lady of Angels Convent

Francis stands here in the simple and humble clothes of his order.

Francis' arms are extended in a prayer of blessing over the grounds of Our Lady of Angels and all who visit here.

Interestingly, this statue of Francis depicts him before he received the stigmata. He is usually pictured with the holy wounds.

St. Anthony of Padua

South Drive of Our Lady of Angels Convent



St. Anthony was born in Portugal in 1195. At a young age, he joined the Augustinian order. He transferred to the Franciscan Order after learning of the martyrdom of five Franciscans in Morocco.

St. Anthony is often depicted holding the Child Jesus who appeared to St. Anthony in a great light while he was praying. St. Anthony was very gifted in preaching and is popularly known as the patron of lost items.

In a letter to Anthony, St. Francis wrote: "I am pleased that you teach sacred theology to the brothers providing that, as is contained in the Rule, you 'do not extinguish the Spirit of prayer and devotion' during study of this kind."

St. Anthony died near Padua, Italy in 1231 at age 35 and was canonized in 1232. He was later named a Doctor of the Church for his gifts in preaching.

More information on St. Anthony:

[Saint Anthony Shrine](#)

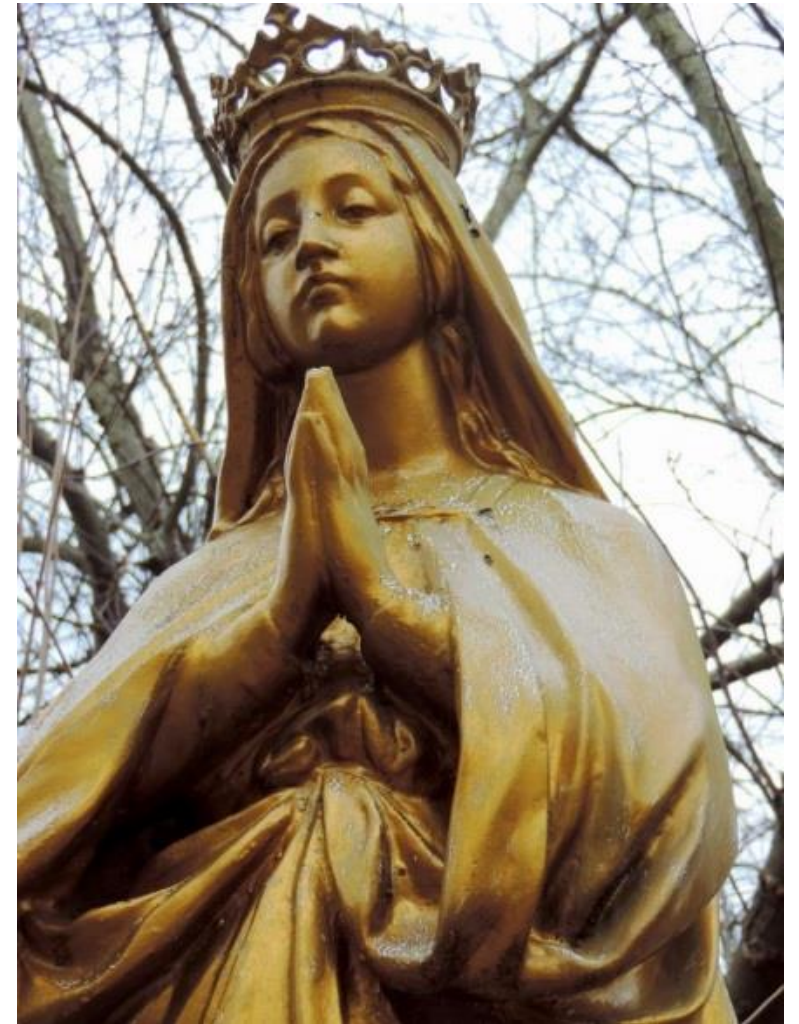
[St. Anthony of Padua](#)

Mary Queen of Heaven

South Drive of Our Lady of Angels Convent

This statue depicts the Blessed Virgin Mary crowned as Queen of Heaven. She is clothed in rich garments and her foot is crushing the head of the serpent while standing on the crescent moon. The depiction of Mary crushing the head of the serpent is a reference to Genesis 3:15, “I will put enmity between you and the woman and between your offspring and hers; they will strike at your head while you strike at their heel.” This verse is applied to Mary as the new Eve.

[More information on Our Lady of the Immaculate Conception](#)



In May 1917 in Fatima, Portugal, three shepherd children, Francisco, Jacinta, and Lucy were tending their flock when a bright flash of light struck the earth and frightened them. As they started to run, a lady dressed in bright white clothing appeared. She revealed herself as the Lady of the Rosary. The Lady requested that they return on the 13th of the month for six months. Each time the Lady appeared to the children, she came with words of wisdom, requests, and prophecies. The Lady asked that the rosary be prayed daily. The Lady repeatedly stressed the importance of conversion. The Lady also stressed the importance of devotion to her Immaculate Heart. Lucy asked for a sign so the people would believe the messages were true; after the six visions, in front of 70,000 people, the sign was performed. Witnesses said on October 13, 1917, an extremely rainy day, the rain stopped immediately and the sun shone when the Lady appeared. As everyone looked at the sun, it began to spin and rays of different colors were projecting from the sun as it lowered to the earth and then rose back to the sky. The people were terrified and fell to their knees in prayer. Our Lady of Fatima's feast day is May 13th.

Our Lady of Fatima

Lower Lawn of Our Lady of Angels Convent

[The story of the apparitions at Fatima](#)

[Rosary prayers](#)

[Guided Rosary on Caring for Creation](#)

[Rosary-Meditations-Care4Creation-Month](#)



Reflective Water Garden

Be praised , my Lord, through Brother Water



This little waterfall behind the Franciscan Spiritual Center beckons:
Come to the water, find a bench, be still, and join all of creation in its song of praise.

St. Therese of Lisieux

The Little Flower

Behind the Franciscan Spiritual Center



Therese Martin was born in France on October 1, 1873, the youngest of nine children. When she was four, her mother passed away and her older sister became her second mother. Therese was a very sensitive child and was coddled by her father and sisters. At the age of 15 she experienced a conversion and joined the Carmelite convent. Therese had the spirit of a missionary and wanted to do great deeds to show her love for God. In the convent she found little ways to express this love through sacrifice and good deeds.

Therese died at age 24, and 2,000 copies of her writings were distributed to other convents. In her writings, we find her close and intimate relationship with God as well as her great wisdom. St. Therese is usually associated with flowers because she saw her sacrifices as scattering flowers of God's love. Many believe that if you complete a Novena to St. Therese, you will receive a rose as a sign that your intention will be granted.

In 1997 Pope John Paul II named St. Therese a Doctor of the Church, only the third time such an honor has been bestowed on a woman.

More information on St. Therese of Lisieux:

[The Little Flower](#)

[St. Therese of Lisieux](#)

Stations of the Cross

An outdoor Stations of the Cross, sometimes called the *Way of the Cross*, can be found winding through the grounds behind OLA Convent beginning near the labyrinth and ending at the cemetery. The Stations remind us of the Passion of Jesus Christ and the great sacrifice that was made for us.

The purpose of praying the Stations is to make a spiritual pilgrimage to the chief scenes of Christ's sufferings and death. One prays the Stations or Way of the Cross by stopping at each Station and meditating on the scene depicted.

Resources for praying the Stations of the Cross:

[How to pray the Stations of the Cross](#)

[Traditional Stations of the Cross](#)

[Stations of the Cross for Today](#)

[Stations of the Cross with reflection on Catholic Social Teaching](#)

[Short version of the Stations of the Cross](#)



ST. FRANCIS EMBRACING THE CRUCIFIED CHRIST

Cemetery behind Our Lady of Angels Convent

This statue is based on the painting by Bartolome Murillo called “St. Francis of Assisi Embracing the crucified Christ.” Below St. Francis’ foot is the globe which represents St. Francis’ conversion and his love for Christ.

This statue also reminds the onlooker of Francis’ reception of the stigmata. Christ appeared to Francis as a crucified seraph or angel. Francis was disturbed by this image, but he understood that he must be crucified with Christ in spirit. Once the vision left him, Francis was left with the stigmata, the impression of the wounds of Christ in his own flesh.



Mother Francis Monument

This memorial marks the place where Mother Bachmann's remains are currently buried. Mother Bachmann's remains have been moved several times. She was first buried in Philadelphia, then her remains were brought to the cemetery at Our Lady of Angels. Finally, on the 150th Anniversary of the Sisters of St. Francis of Philadelphia, her remains were moved to a garden space between the new cemetery and the old cemetery and marked by this monument.



The Holy Family

In Our Lady of Angels Cemetery

This statue is a depiction of the Holy Family. St. Joseph stands with the Blessed Virgin Mary who is holding the Child Jesus. The Holy Family serves as a model for all of us. Although Joseph and Mary endured many hardships, the Holy Family remained together, grounded by their faith in God.



The Chapel of the Sorrowful Mother houses a very special altar to both Neumann University and the Sisters of St. Francis of Philadelphia. The altar inside the chapel is the very altar where Mother Bachmann and her sisters professed the vows of poverty, chastity, and obedience for the first time and initiated the Sisters of St. Francis of Philadelphia. This altar is where St. John Neumann said Mass as well.

The chapel is named in honor of Mary the Sorrowful Mother. Inside the chapel above the altar is a statue of the Sorrowful Mother. This title recalls the seven great sorrows of Mary's life:

- The Presentation of Jesus in the temple
- The flight into Egypt
- The three day loss of the Child Jesus in the temple
- The Way of the Cross
- The Crucifixion
- The Descent from the Cross
- The burial of Jesus

Many have devotion to Mary under the title of the Sorrowful Mother and pray to her in their times of sorrow.

Sorrowful Mother Chapel

Behind Our Lady of Angels Chapel





The Crucified Christ

Driveway beside St. Joseph House

This Crucifix on the grounds reminds us of the great love God has for us and the truth that “no one has greater love than this, to lay down one’s life for one’s friend” (John 15:13).

Most associate devotion to Jesus' Sacred Heart with the visions of St. Margaret Mary Alacoque, but the devotion can be traced to the second century in the writings of St. Justin Martyr. This devotion became more popular in the Middle Ages when Pope Innocent VI instituted a Mass honoring the Sacred Heart. In 1673 St. Margaret Mary Alacoque experienced a vision of Christ and his Sacred Heart. In these visions Jesus asked the saint to establish the devotion. The devotions include the Nine First Fridays and a Holy Hour. In the apparition Jesus also revealed the Twelve Promises of the Sacred Heart. This statue depicts the vision St. Margaret Mary received. Christ's three extended fingers represent the mystery of the Trinity and the two bent fingers represent the human and divine natures of Christ. Christ's heart, surrounded by light, is exposed with the crown of thorns around it which represents the pain Christ bears for humanity. His Heart burns with the fire of love which was shown on the Cross. The wound on the left of the heart is where Jesus was pierced. Many people all around the world still honor the Sacred Heart of Jesus today, and the Church honors His Sacred Heart 19 days after Pentecost. The chapel in Bachmann Main building is dedicated to the Sacred Heart.

More information:

[History of Devotion to the Sacred Heart of Jesus](#)
[St. Margaret Mary Alacoque](#)

Sacred Heart of Jesus

Behind Our Lady of Angels Chapel



On February 11, 1858, in Lourdes, France, a poor 14 year old girl named Bernadette Soubirous was collecting wood when suddenly there was a flash of light and a beautiful woman appeared in a great golden cloud. Bernadette fell to her knees and prayed the rosary in front of the beautiful lady. After this encounter, Bernadette returned to that place everyday. After several apparitions, the beautiful lady revealed herself as the Blessed Mother; she appeared to Bernadette eighteen times and the apparition was witnessed by tens of thousands of people. During one of the apparitions, the Blessed Mother instructed Bernadette to dig in the dirt where she stood; when Bernadette dug, a spring came forth. To this day, the spring flows in the grotto where the apparitions took place. Every year, six million people visit the site and bathe in the waters from the spring. From bathing in the waters, there have been 7,000 documented cures. This grotto is a representation of the apparitions that St. Bernadette experienced and the fountain is a reminder of the spring that flows in Lourdes today.

All are welcome to visit the Grotto.

Our Lady of Lourdes Grotto

Behind Our Lady of Angels Chapel



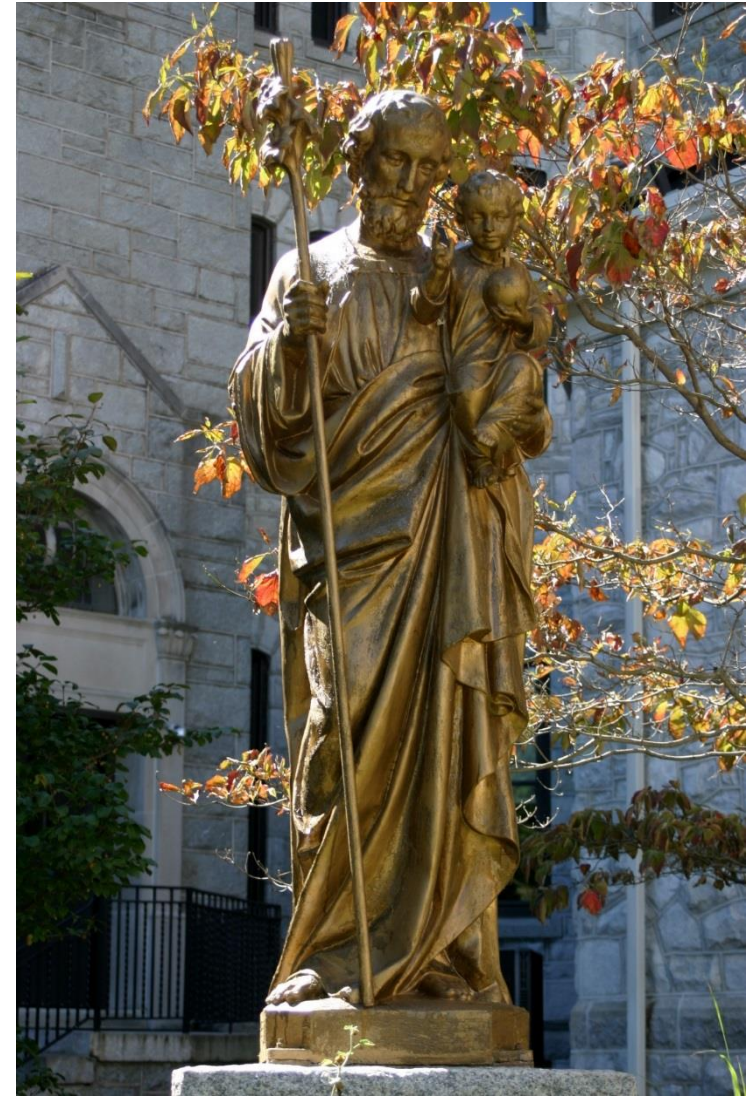
[More background on Our lady of Lourdes](#)

St. Joseph

Behind Our Lady of Angels Convent in the herb garden

Joseph is the foster father of Jesus and the earthly spouse of Mary; he was devoted to protecting his family and providing for them through his craft of carpentry. In this statue, we see St. Joseph holding the Child Jesus whom he loved and cared for. The Child Jesus has his first three fingers extended to symbolize the Trinity, and his two end fingers are bent to symbolize the human and divine natures of Christ. Jesus is holding the *Globus Cruciger* which represents the sacrifice Christ made for the world. St. Joseph is dressed in humble clothing and holds a staff with lilies sprouting out of the top. The lily represents chastity when depicted with saints and reminds us of Joseph's chaste relationship with Mary.

[Background on St. Joseph](#)



St. Francis of Assisi

OLA Convent Main Foyer

This statue of Francis is unique; both Francis and the bench he sits on hold a special significance.

The bench that Francis sits on was made specifically for the statue. Behind the convent there used to be a beautiful copper beech tree that, unfortunately, started to decay and had to be removed. A bench was made from the wood of the tree. This bench was built to accommodate this welcoming statue of St. Francis. St. Francis sits on this copper beech tree bench, holding the open Bible inviting all to join him.

The bronze statue was a gift to the Sisters of St. Francis from Catholic Health Initiatives on the 150th anniversary of the congregation.

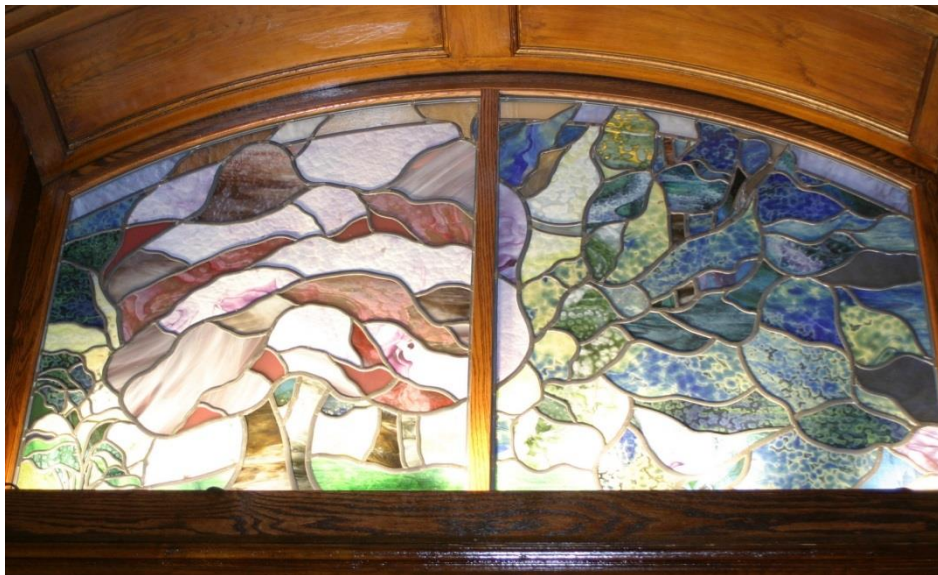


Canticle

Stained Glass windows
in the Main Hallway of OLA Convent

Each window highlights a different part of the beautiful poem, The Canticle of Creation, written by St. Francis.

They were designed by Sr. Stephana Toomey, OP, and produced by a stained glass artist that she hired.

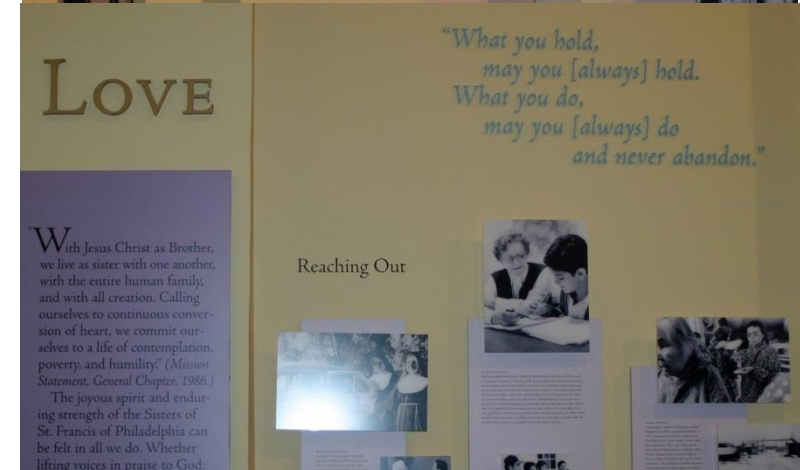
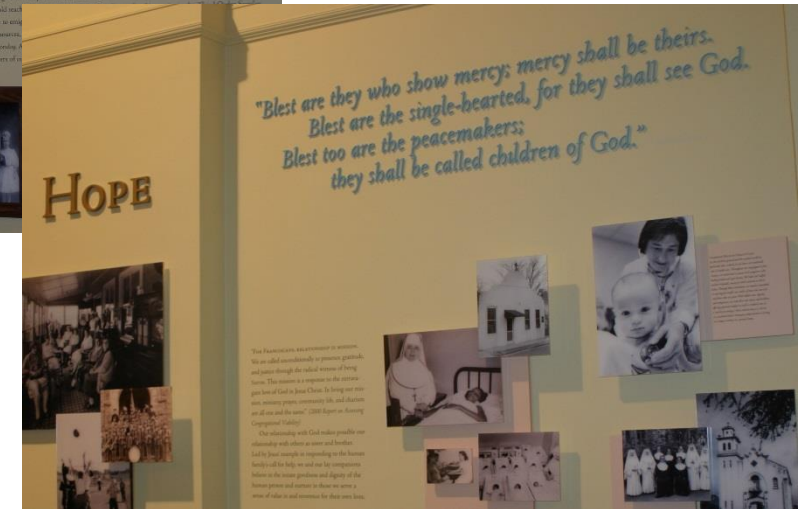
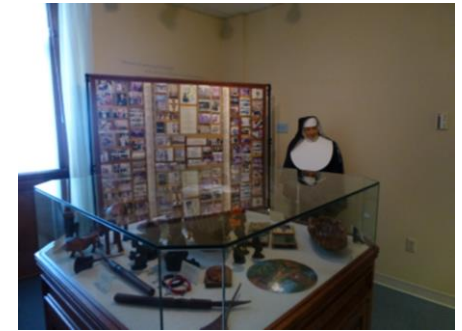
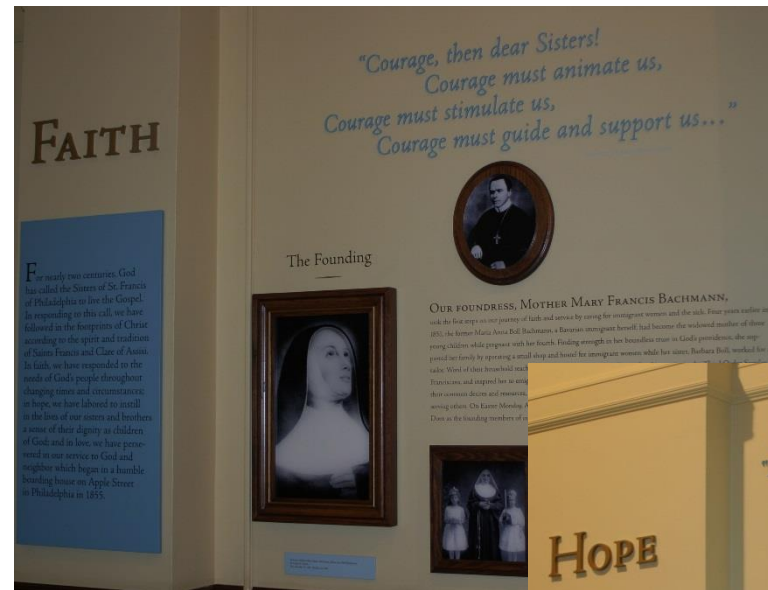
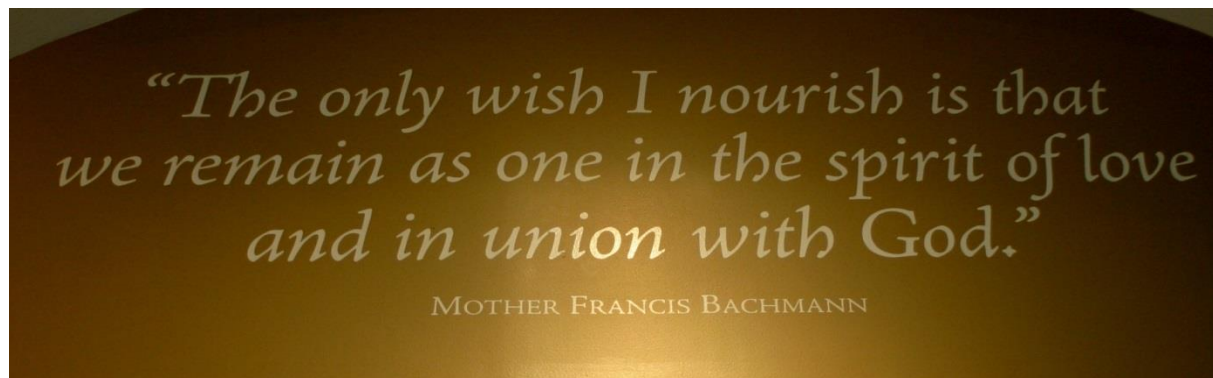


Trusting in Providence

Heritage Hallway Display

Our Lady of Angels Convent

In the main hallway of the OLA convent, a display hangs recounting the story of the Sisters of St. Francis of Philadelphia and how the order became what it is today. The hallway is filled with quotes, explanations, and photos of the Sisters and those who were instrumental in their founding and growth.



Our Lady of Angels Chapel

When you visit the chapel, you will find a booklet that explains all of the artistic features in the chapel. Click on this link to access the electronic version of the booklet: [Our Lady of Angels Chapel Guide](#)



Credits

Created by:

Dominic Gentile

Franciscan University of Steubenville, Class of 2016

Neumann Institute for Franciscan Studies Intern

Summer 2014

Cover photo by Scott Beadenkopf

Photos by Sister Mary Ann McCarthy OSF

Labyrinth pamphlet from Franciscan Spiritual Center

Our Lady of Angels Chapel Booklet from Sisters of St. Francis Foundation

First publication September 2015

***** Resource links are provided for the user's convenience. By providing these links, Neumann University does not necessarily endorse these web sites, their content, or their sponsoring organizations.***