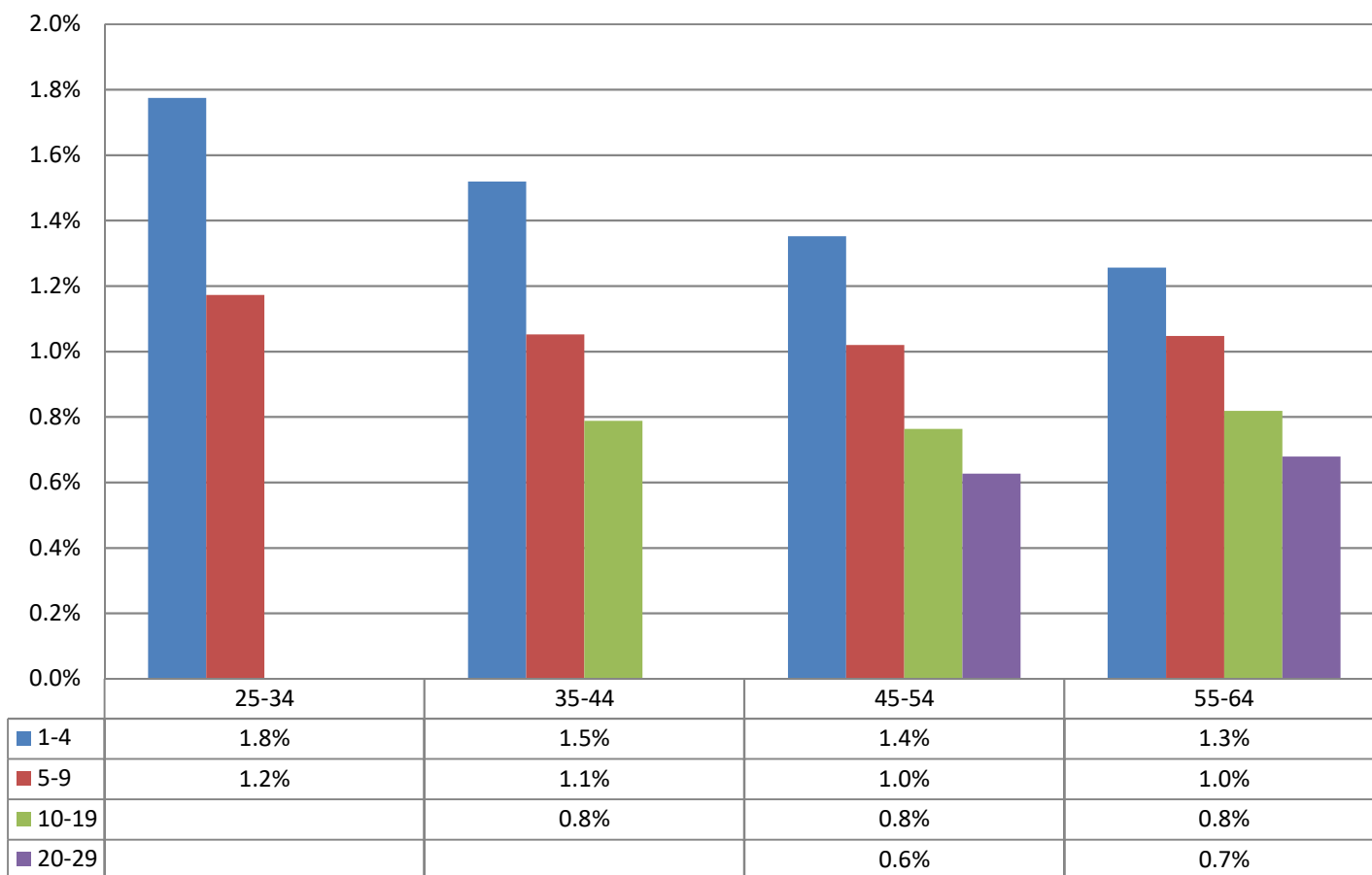


## Monthly Change In Average Account Balances (by Age and Tenure) for August 2017 Among Consistent 401(k) Participants with Account Balances as of December 31, 2014



**Years of Tenure with Current Employer**

**Age**

Sources: 2014 Account Balances: Tabulations from EBRI/ICI Participant-Directed Retirement Plan Data Collection Project; 2017 Account Balances: EBRI estimates. The projection is based on all participants with account balances at the end of 2014 and contribution information for that year.