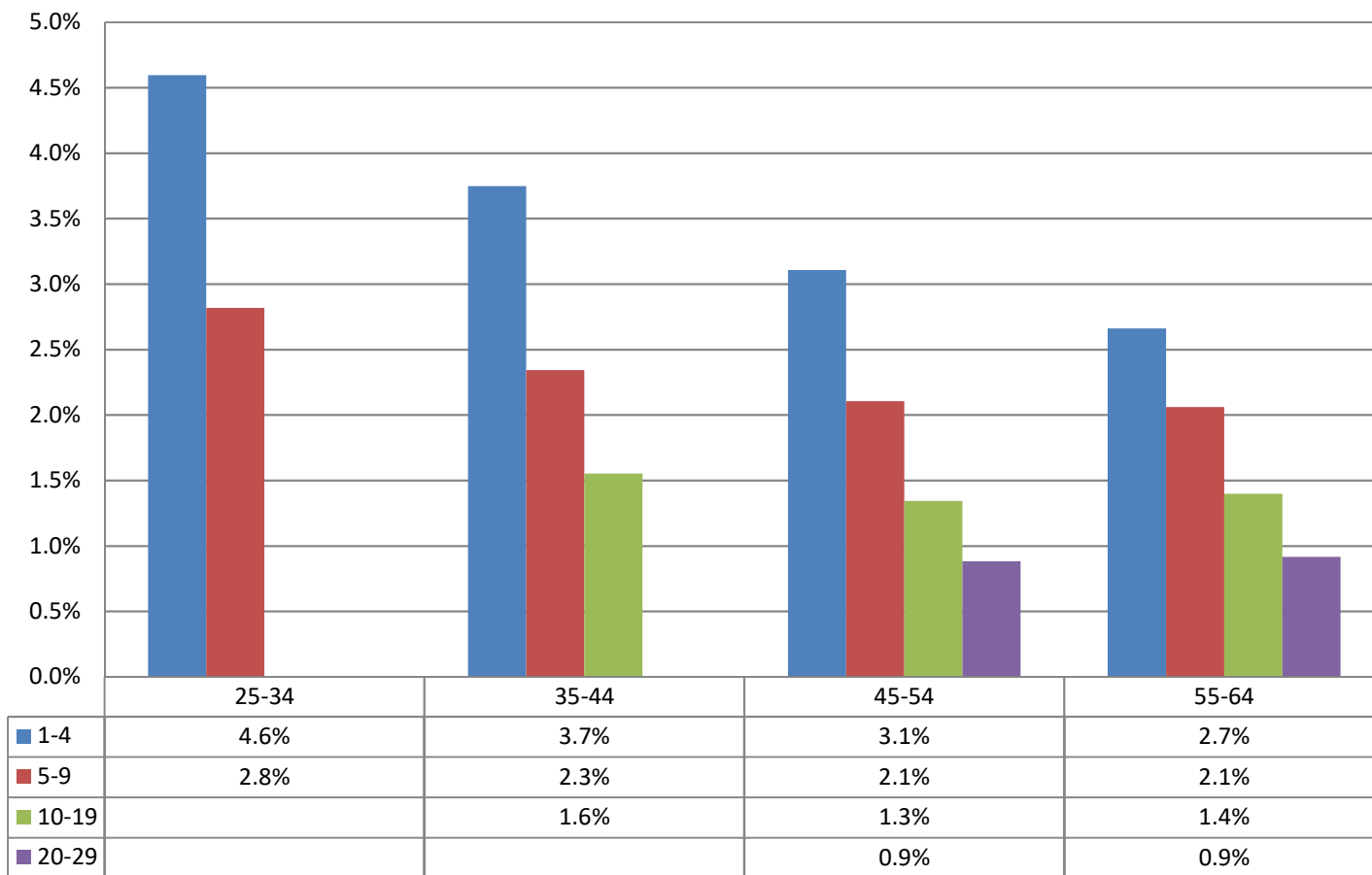


Monthly Change In Average Account Balances (by Age and Tenure) for May 2018 Among Consistent 401(k) Participants with Account Balances as of December 31, 2015



Years of Tenure with Current Employer

Age

Sources: 2015 Account Balances: Tabulations from EBRI/ICI Participant-Directed Retirement Plan Data Collection Project; 2018 Account Balances: EBRI estimates. The analysis is based on all participants with account balances at the end of 2015 and contribution information for that year.

NB: these numbers should not be compared to the previous time series using 401(k) participants from 2014 due to changes in the composition of the data base.